
INFECTIOUS DISEASES WEEKLY REPORT

TOKYO IDWR

Tokyo Metropolitan Infectious Disease Surveillance Center

13 August 2009 / Number 32

Surveillance System in Tokyo, Japan

The infectious diseases which all physicians must report

All physicians must report to health centers the incidence of the diseases which are shown at page one. Health centers electronically report the individual cases to Tokyo Metropolitan Infectious Disease Surveillance Center.

The infectious diseases required to be reported by the sentinels

The numbers of patients who visit the sentinel clinics or hospitals during a week are reported to health centers in Tokyo. And they electronically report the numbers to Tokyo Metropolitan Infectious Disease Surveillance Center. We have about 400 sentinel clinics and hospitals in Tokyo.

1st Week is early January and 52nd Week is end of December.

Tokyo Metropolitan Institute of Public Health
Epidemiological Information Office

TEL:81-3-3363-3213 FAX:81-3-5332-7365

e-mail:idsc@tokyo-eiken.go.jp

URL:idsc.tokyo-eiken.go.jp/

Number of patients with the diseases which all physicians must report

Category	Diseases	Tokyo				Japan		
		29th	30th	31st	32nd	Cum 2009	32nd	Cum 2009
I	Ebola hemorrhagic fever							
	Crimean-Congo hemorrhagic fever							
	Smallpox							
	South American hemorrhagic fever							
	Plague							
	Marburg disease							
	Lassa fever							
II	Acute poliomyelitis							
	Tuberculosis	79	45	65	55	2469	299	15909
	Diphtheria							
	Severe Acute Respiratory Syndrome(SARS)							
	Avian influenza H5N1							
III	Cholera					1		5
	Shigellosis		2	1	1	23		100
	Enterohemorrhagic Escherichia coli infection	14	18	22	15	139	131	1,767
	Typhoid fever			1		10		19
	Paratyphoid fever		1	1		6	1	14
IV	Hepatitis E					6		29
	West Nile fever							
	Hepatitis A	1				10		82
	Echinococcosis					1		15
	Yellow fever							
	Psittacosis					1		14
	Omsk hemorrhagic fever							
	Relapsing fever							
	Kyasanur forest disease							
	Q fever					1		2
	Rabies							
	Coccidioidomycosis					1		2
	Monkeypox							
	Hemorrhagic fever with renal syndrome							
	Western equine encephalitis							
	Tick-borne encephalitis							
	Anthrax							
	Scrub typhus(Tsutsugamushi disease)					2	1	106
	Dengue fever					12	2	39
	Eastern equine encephalitis							
	Avian influenza (excluding H5N1)							
	Nipah virus infection							
	Japanese spotted fever						2	46
	Japanese encephalitis							
	Epidemic typhus							
	Hantavirus pulmonary syndrome							
	Herpes B virus infection							
	Glanders							
	Brucellosis							1
	Venezuelan equine encephalitis							
Hendra virus infection								
Botulism								
Malaria					2	16	1	38
Tularemia								
Lyme disease			1			1		3
Lyssavirus infection(excluding rabies)								
Rift valley fever								
Melioidosis								
Legionellosis	2	1	1	2	32	15	418	
Leptospirosis							6	
Rocky mountain spotted fever								

Category	Diseases	Tokyo					Japan	
		29th	30th	31st	32nd	Cum 2009	32nd	Cum 2009
V	Amebiasis	3	1	4	7	87	12	495
	Viral hepatitis(excluding hepatitis A and E)		1			25	4	136
	Acute encephalitis(excluding JE and WNE)		2			14		138
	Cryptosporidiosis					1		12
	Creutzfeldt-Jakob disease					11	4	79
	Severe invasive streptococcal infections(TSLS)		1			9	1	78
	Acquired immunodeficiency syndrome (AIDS)	11	18	10	9	311	9	903
	Giardiasis		1			17		50
	Meningococcal meningitis					1		9
	Congenital rubella syndrome							
	Syphilis		5	2	5	129	7	441
	Tetanus				1	4		62
	Vancomycin-resistant S. aureus infection							
	Vancomycin-resistant Enterococcus infection	1				8		55
	Rubella				2	10	6	123
Measles	2	3		3	80	12	545	
Novel Flu	Novel influenza (swine-origin influenza A/H1N1) *	18	47	185	212	668	—	4986 **

* laboratory confirmed cases

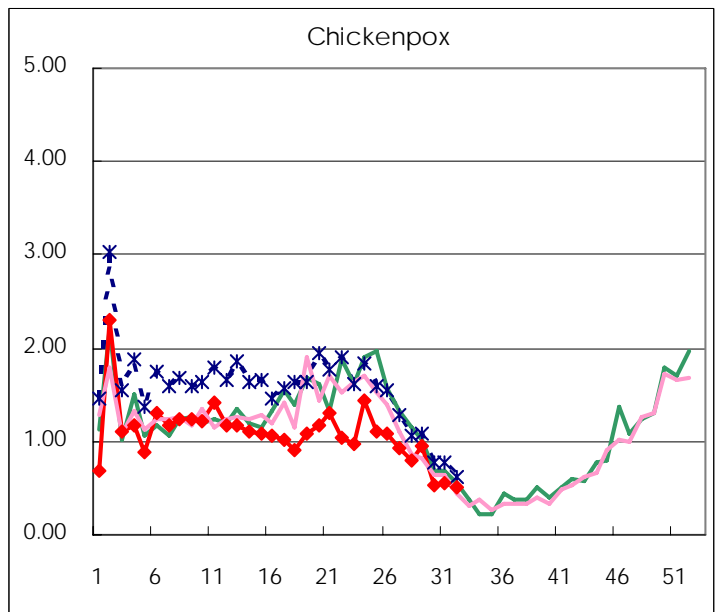
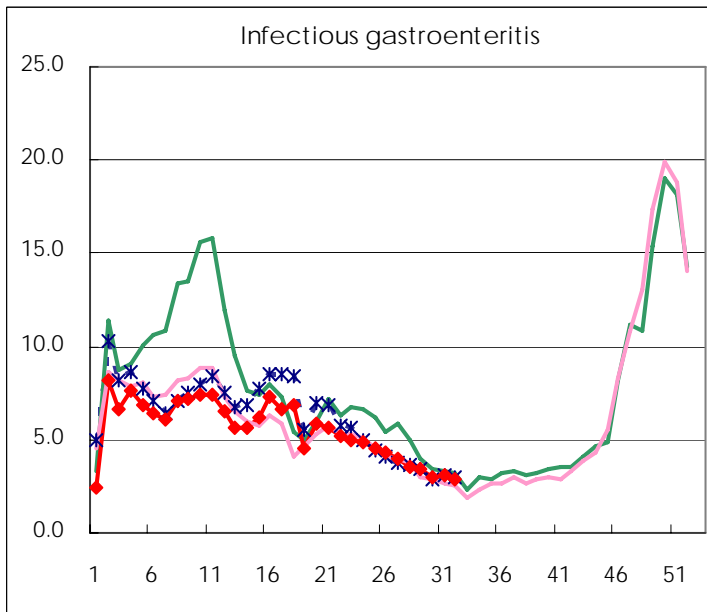
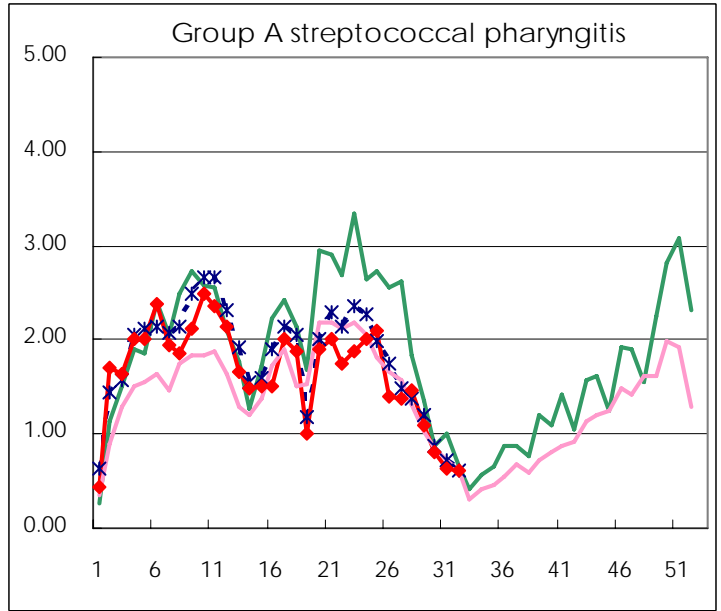
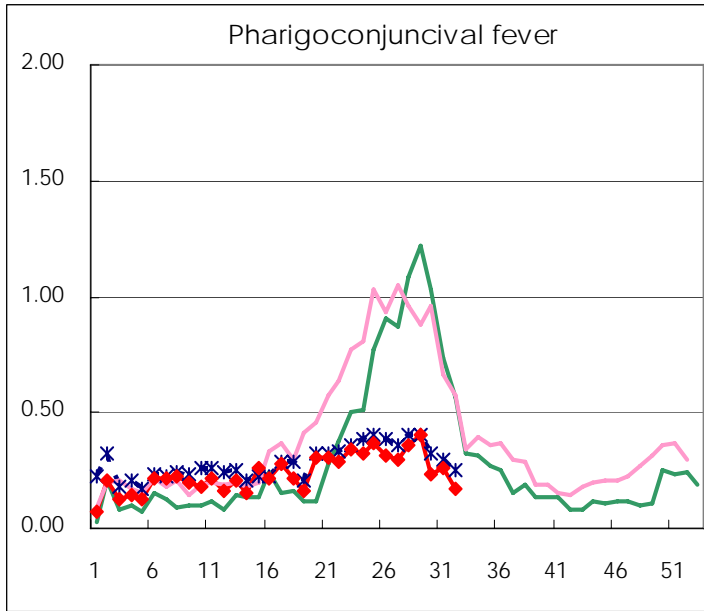
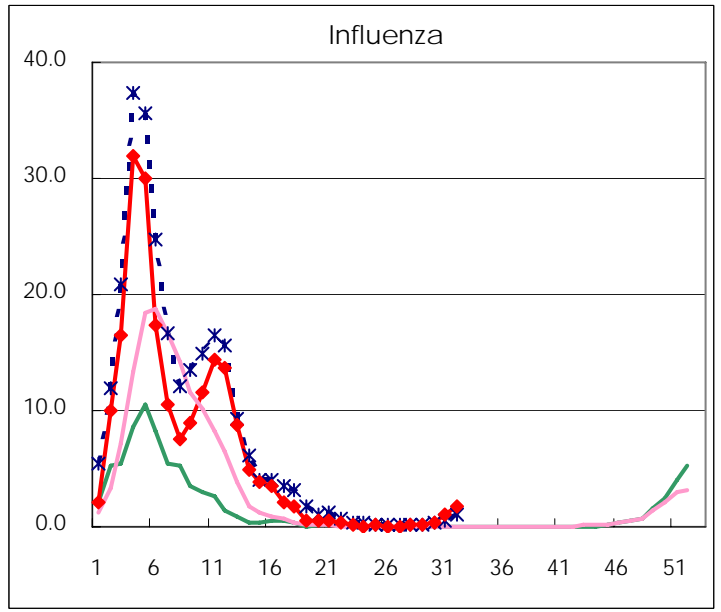
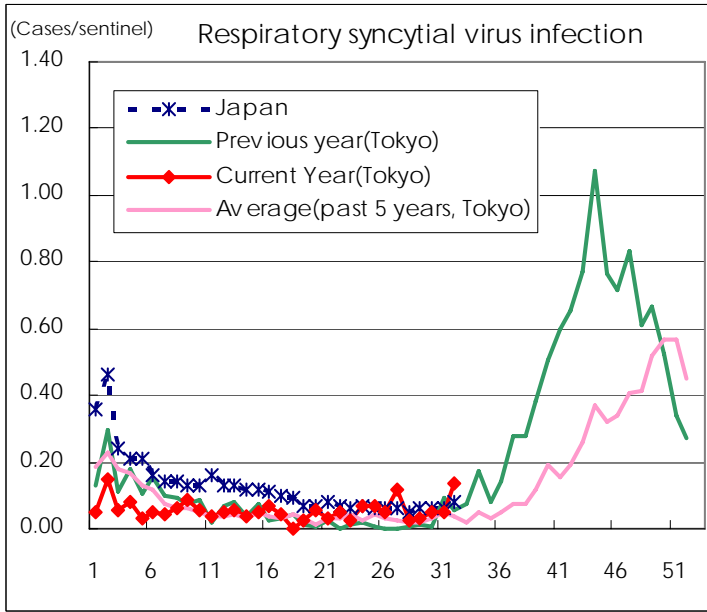
** As of July 24

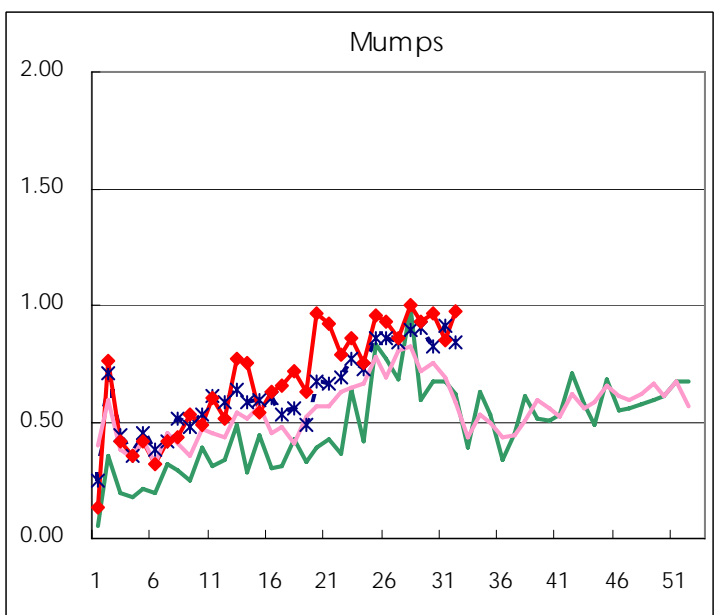
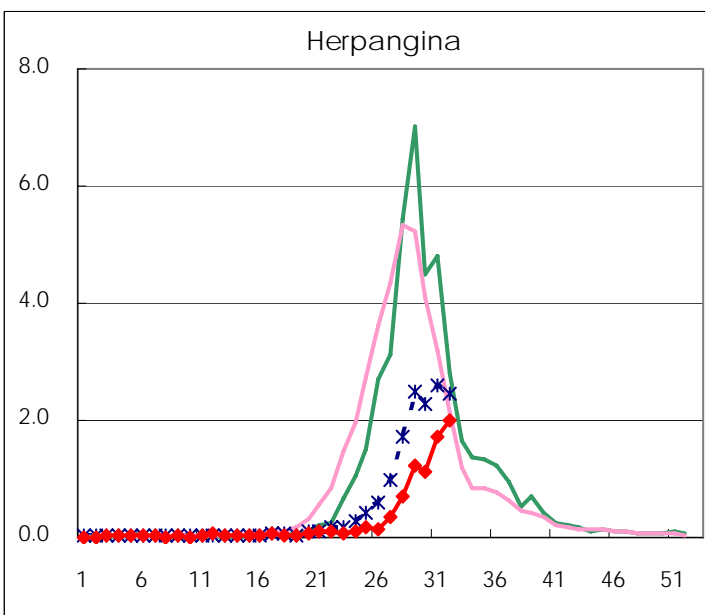
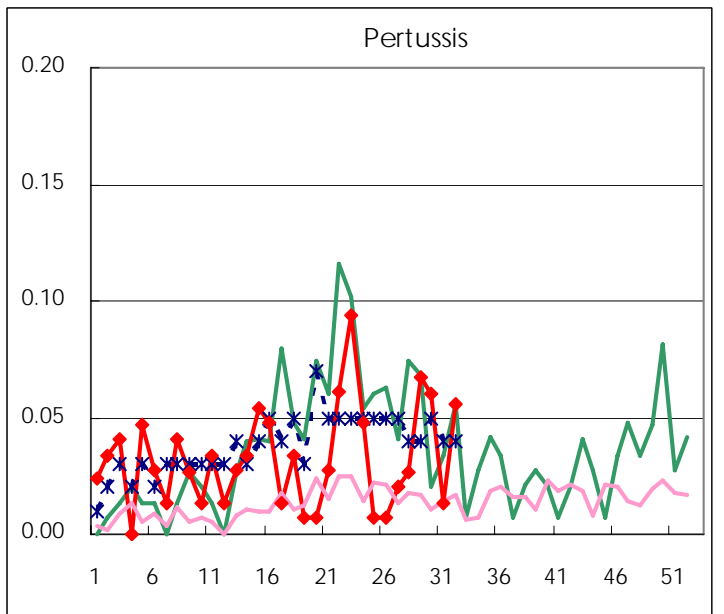
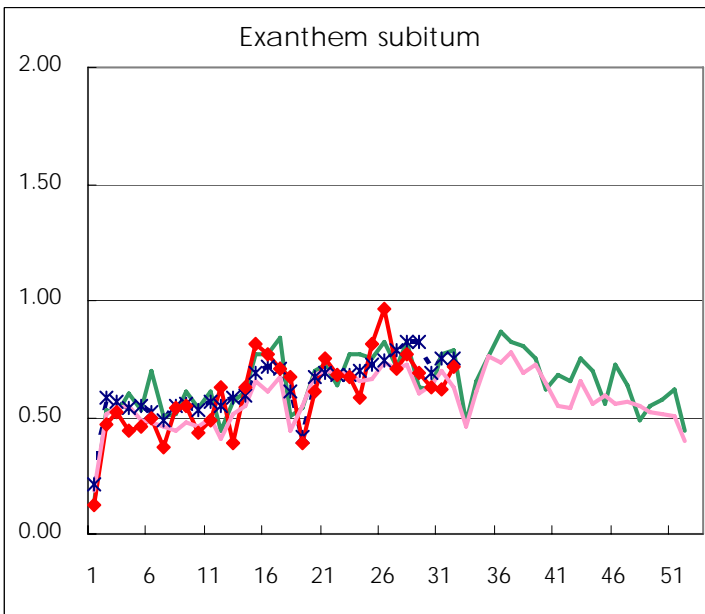
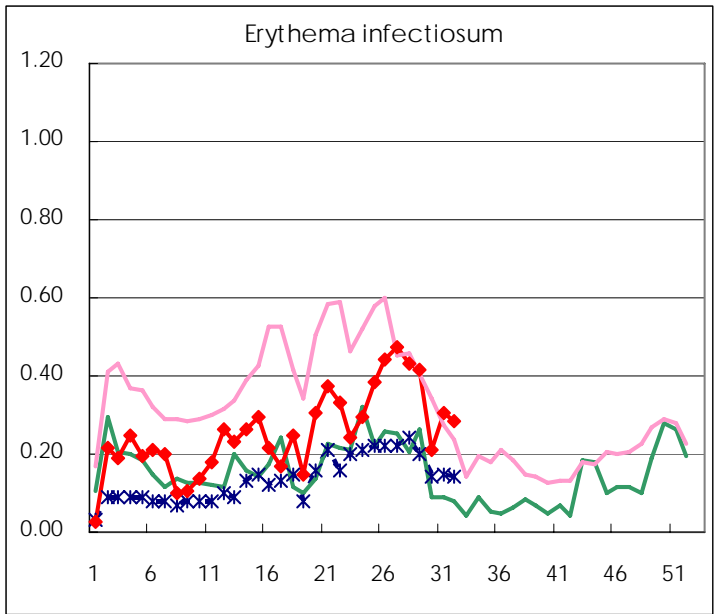
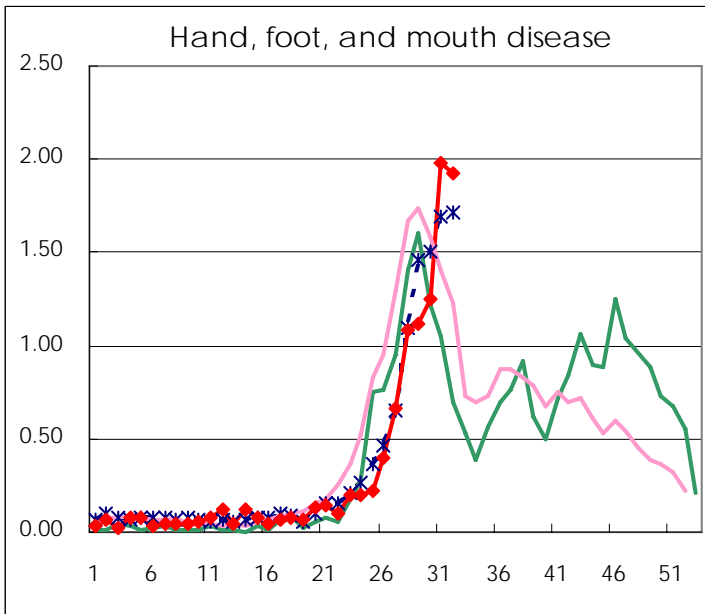
Number of patients with the diseases to be reported
by the designated clinics and hospitals

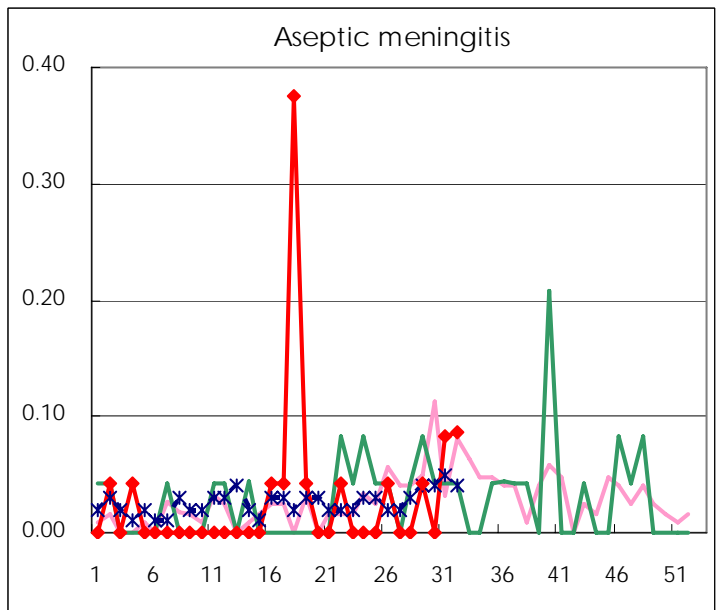
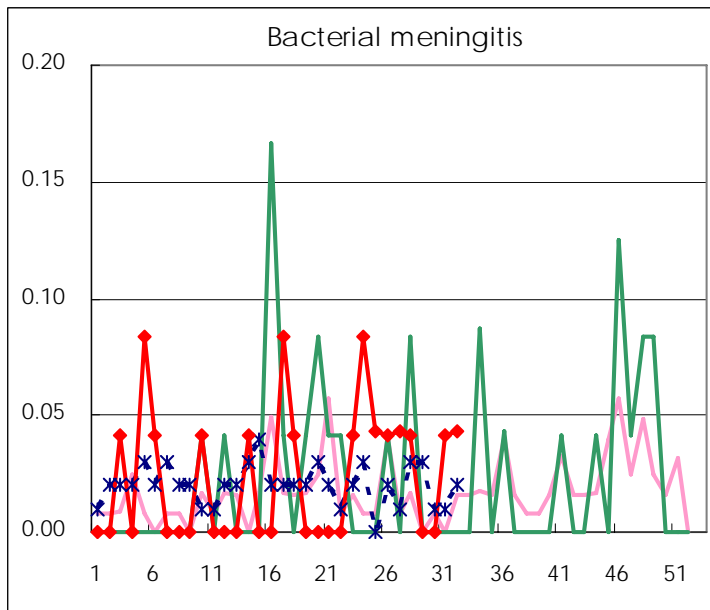
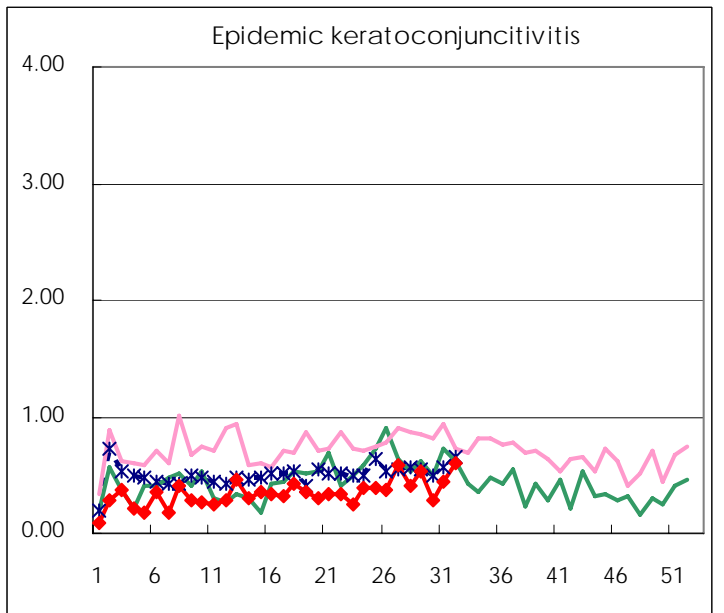
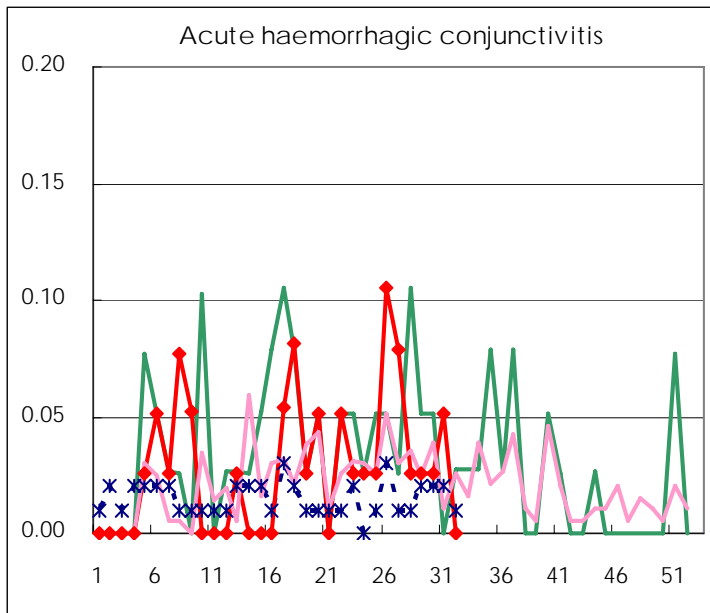
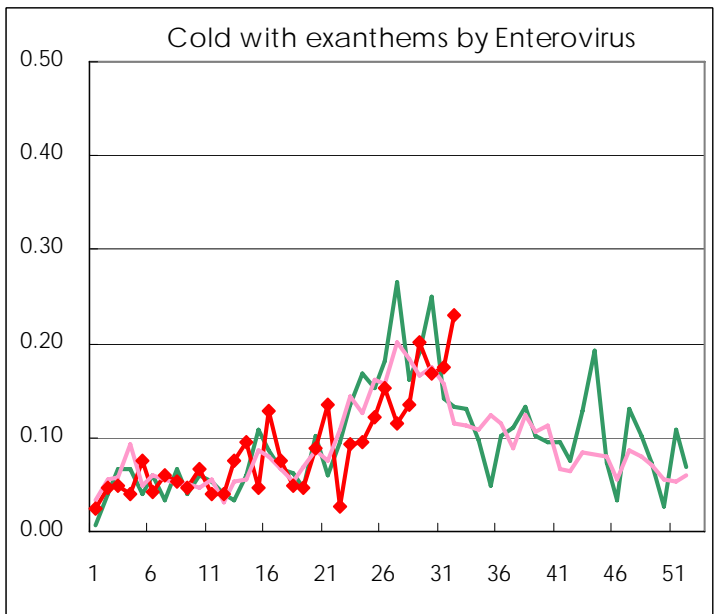
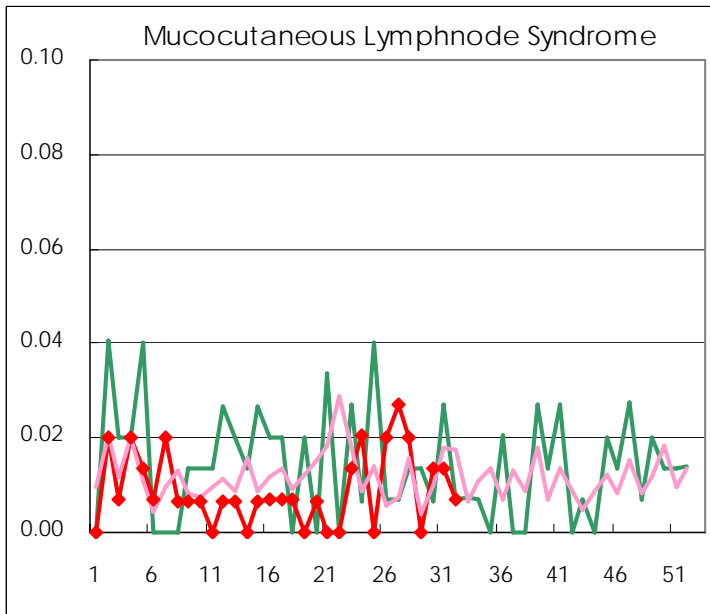
Diseases	2009				
	29th	30th	31st	32nd	/sentinel
Respiratory syncytial virus infection	5	7	7	19	0.13
Pharyngoconjunctival fever	60	35	39	24	0.17
Group A streptococcal pharyngitis	163	119	95	86	0.60
Infectious gastroenteritis	508	437	459	404	2.83
Chickenpox	141	79	81	74	0.52
Hand, foot, and mouth disease	167	187	293	276	1.93
Erythema infectiosum	62	31	45	41	0.29
Exanthem subitum	103	94	92	103	0.72
Pertussis	10	9	2	8	0.06
Herpangina	182	167	257	286	2.00
Mumps	139	144	126	139	0.97
Cold with exanthems by Enterovirus	30	25	26	33	0.23
Mucocutaneous Lymphnode Syndrome		2	2	1	0.01
Influenza	72	82	277	466	1.68
Acute hemorrhagic conjunctivitis	1	1	2		
Epidemic keratoconjunctivitis	21	11	17	21	0.60
Bacterial meningitis			1	1	0.04
Aseptic meningitis	1		2	2	0.09
Mycoplasma pneumonia	8	5	10	8	0.35
Chlamydial pneumonia (excluding psittacosis)	1				

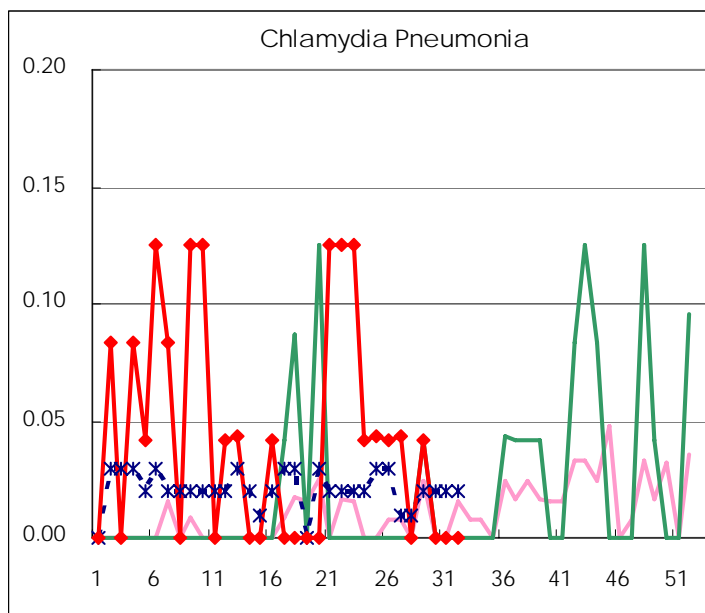
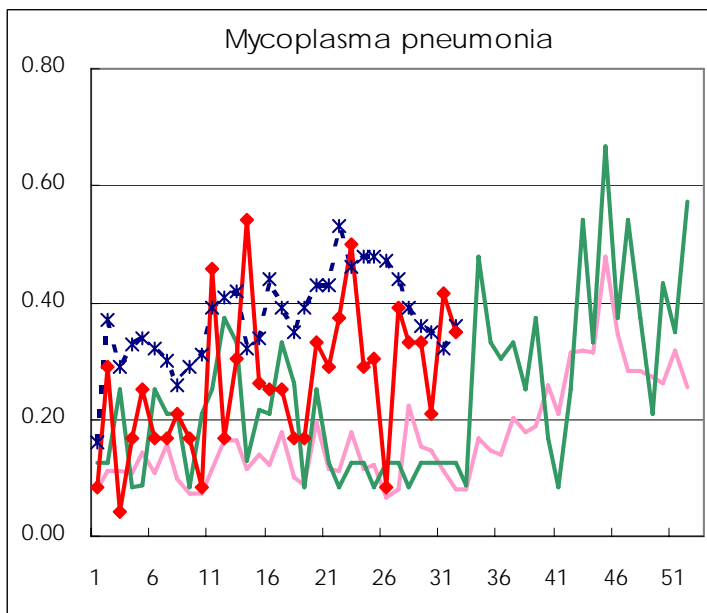
(Blank means 0.)

Disease Trend Graph (weekly reported cases per sentinel in comparison)









Number of sentinel facilities
for weekly reporting

Types of sentinels	Number of sentinels	Sentinels having reported
Pediatric	150	143
Influenza	290	278
Ophthalmic	39	35
Specially-designated	24	23

Tokyo Metropolitan Government
Infectious Disease Surveillance Center