
INFECTIOUS DISEASES WEEKLY REPORT

TOKYO IDWR

Tokyo Metropolitan Infectious Disease Surveillance Center

20 August 2009 / Number 33

Surveillance System in Tokyo, Japan

The infectious diseases which all physicians must report

All physicians must report to health centers the incidence of the diseases which are shown at page one. Health centers electronically report the individual cases to Tokyo Metropolitan Infectious Disease Surveillance Center.

The infectious diseases required to be reported by the sentinels

The numbers of patients who visit the sentinel clinics or hospitals during a week are reported to health centers in Tokyo. And they electronically report the numbers to Tokyo Metropolitan Infectious Disease Surveillance Center. We have about 400 sentinel clinics and hospitals in Tokyo.

1st Week is early January and 52nd Week is end of December.

Tokyo Metropolitan Institute of Public Health
Epidemiological Information Office

TEL:81-3-3363-3213 FAX:81-3-5332-7365

e-mail: idsc@tokyo-eiken.go.jp

URL: idsc.tokyo-eiken.go.jp/

Number of patients with the diseases which all physicians must report

Category	Diseases	Tokyo				Japan		
		30th	31st	32nd	33rd	Cum 2009	33rd	Cum 2009
I	Ebola hemorrhagic fever							
	Crimean-Congo hemorrhagic fever							
	Smallpox							
	South American hemorrhagic fever							
	Plague							
	Marburg disease							
	Lassa fever							
II	Acute poliomyelitis							
	Tuberculosis	51	67	61	41	2548	265	16510
	Diphtheria							
	Severe Acute Respiratory Syndrome(SARS)							
	Avian influenza H5N1							
III	Cholera					1		5
	Shigellosis	2	1	1	3	26	7	108
	Enterohemorrhagic Escherichia coli infection	18	22	15	10	149	103	1,902
	Typhoid fever		1			10		19
	Paratyphoid fever	1	1			6		14
IV	Hepatitis E					6	1	30
	West Nile fever							
	Hepatitis A					10		83
	Echinococcosis					1		15
	Yellow fever							
	Psittacosis					1		15
	Omsk hemorrhagic fever							
	Relapsing fever							
	Kyasanur forest disease							
	Q fever					1		2
	Rabies							
	Coccidioidomycosis					1		2
	Monkeypox							
	Hemorrhagic fever with renal syndrome							
	Western equine encephalitis							
	Tick-borne encephalitis							
	Anthrax							
	Scrub typhus(Tsutsugamushi disease)					2		106
	Dengue fever					12	1	40
	Eastern equine encephalitis							
	Avian influenza (excluding H5N1)							
	Nipah virus infection							
	Japanese spotted fever						1	48
	Japanese encephalitis							
	Epidemic typhus							
	Hantavirus pulmonary syndrome							
	Herpes B virus infection							
	Glanders							
	Brucellosis							1
	Venezuelan equine encephalitis							
Hendra virus infection								
Botulism								
Malaria			2	1	17	2	41	
Tularemia								
Lyme disease		1			1		4	
Lyssavirus infection(excluding rabies)								
Rift valley fever								
Melioidosis								
Legionellosis	1	1	2	1	33	12	440	
Leptospirosis							6	
Rocky mountain spotted fever								

Category	Diseases	Tokyo					Japan	
		30th	31st	32nd	33rd	Cum 2009	33rd	Cum 2009
V	Amebiasis	1	4	7	3	90	7	510
	Viral hepatitis(excluding hepatitis A and E)	1				25	1	141
	Acute encephalitis(excluding JE and WNE)	2				14	4	144
	Cryptosporidiosis					1		12
	Creutzfeldt-Jakob disease					11		81
	Severe invasive streptococcal infections(TSLS)	1				9		78
	Acquired immunodeficiency syndrome (AIDS)	18	10	9	11	322	13	931
	Giardiasis	1			1	18	1	51
	Meningococcal meningitis					1		9
	Congenital rubella syndrome							
	Syphilis	5	2	5	1	130	1	447
	Tetanus			1		4	1	64
	Vancomycin-resistant S. aureus infection							
	Vancomycin-resistant Enterococcus infection				1	9	2	60
	Rubella			2		10		123
Measles	3		3	1	81	10	560	
Novel Flu	Novel influenza (swine-origin influenza A/H1N1) *	47	200	248	216	935	—	**4986

* laboratory confirmed cases

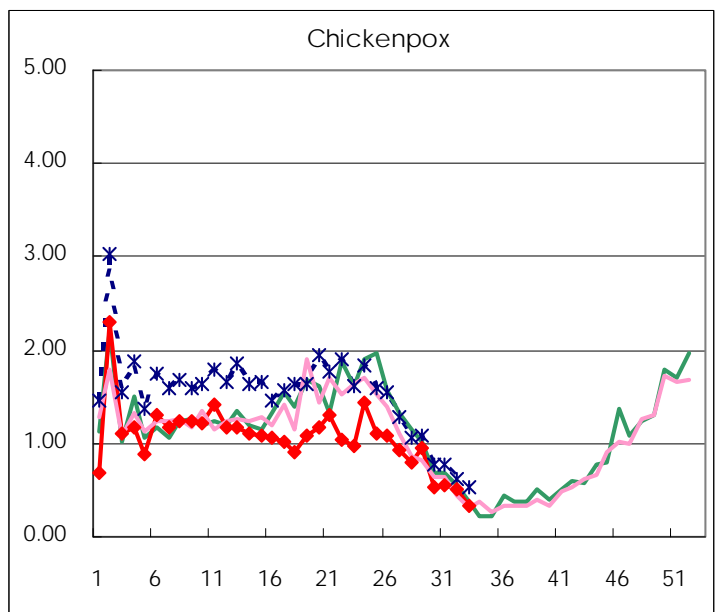
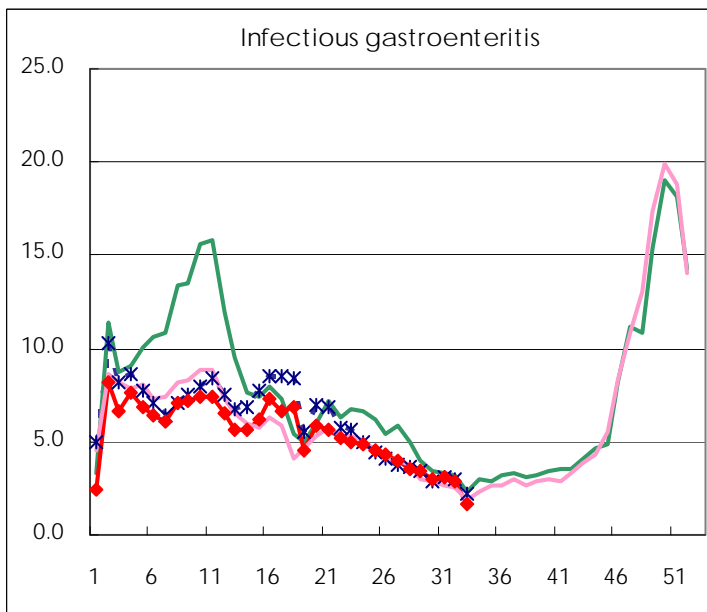
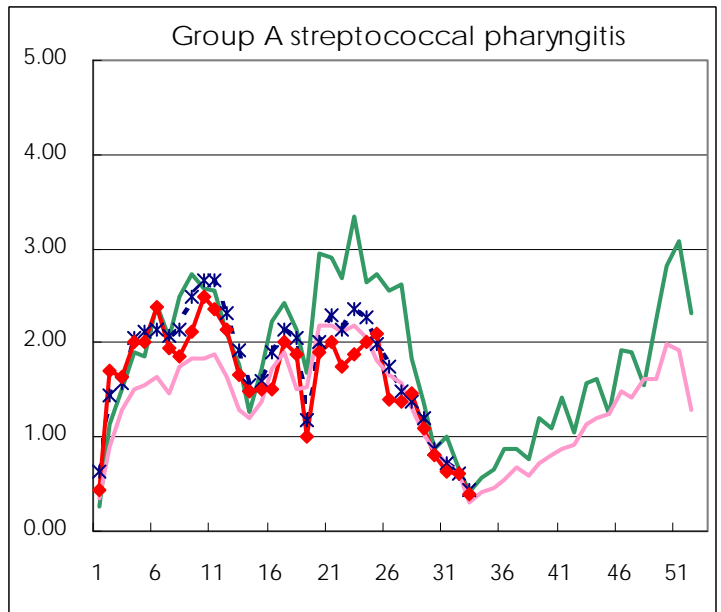
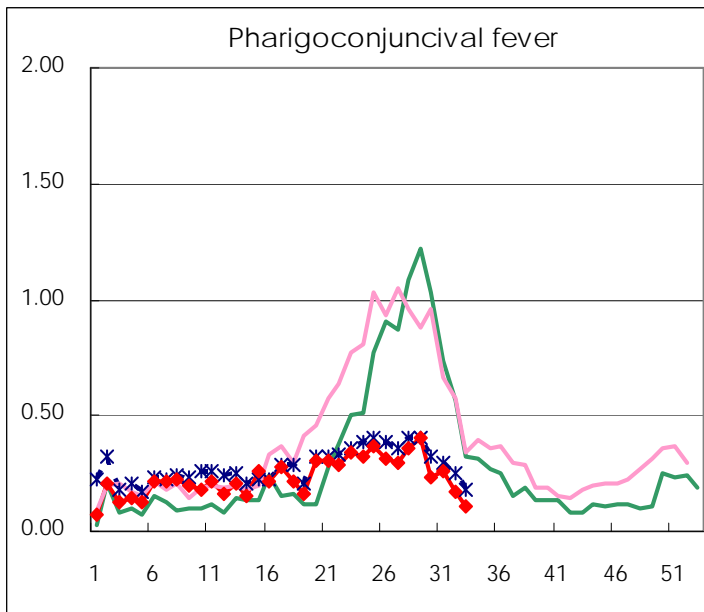
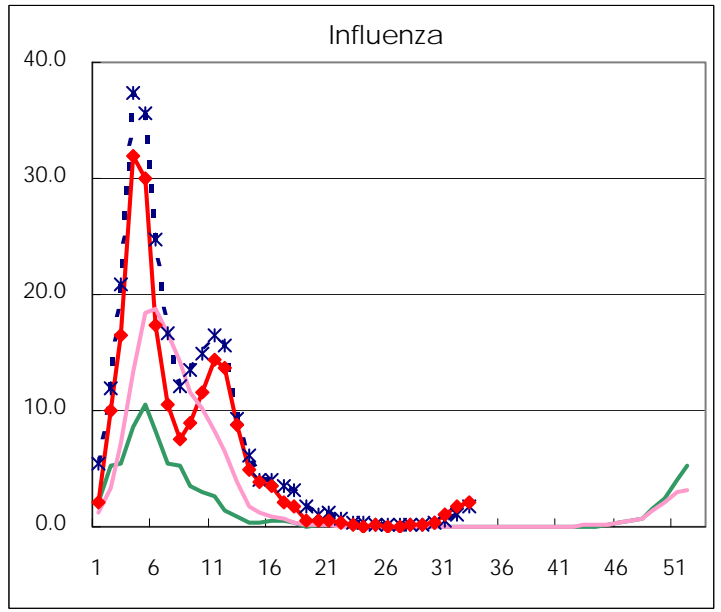
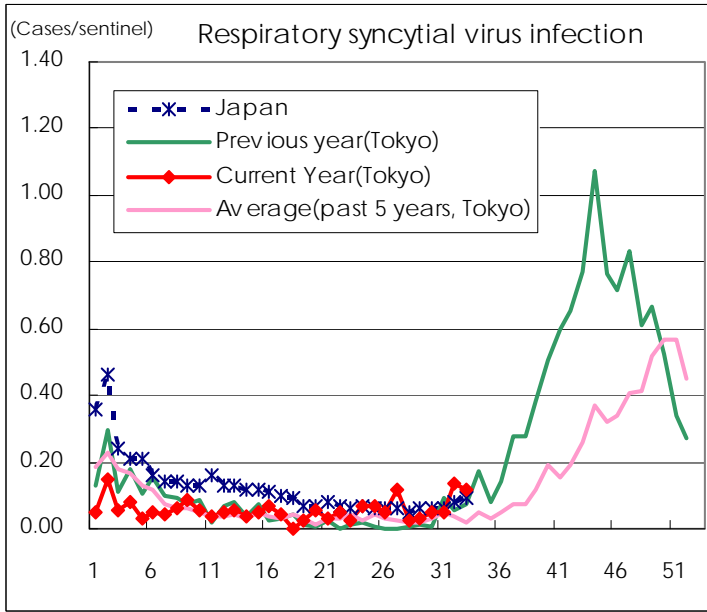
** As of July 24

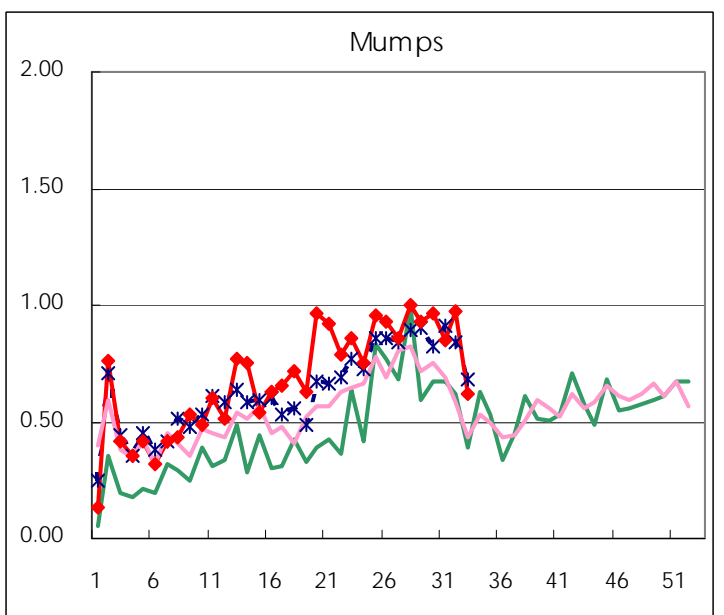
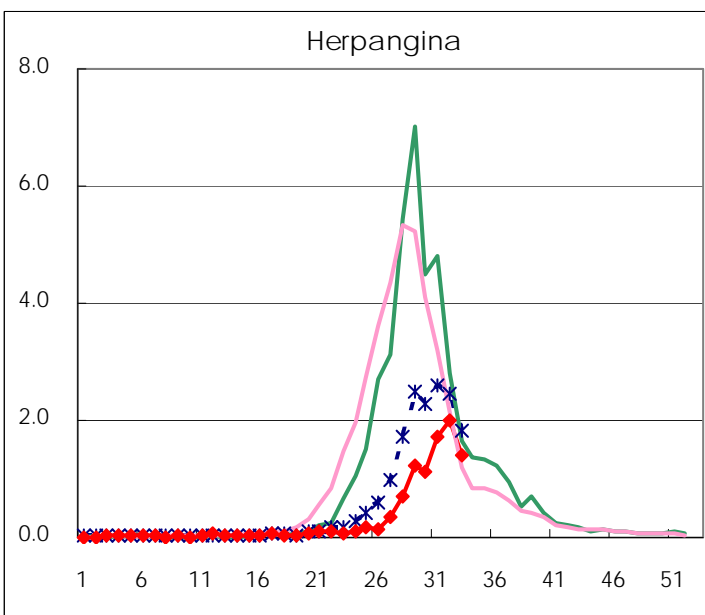
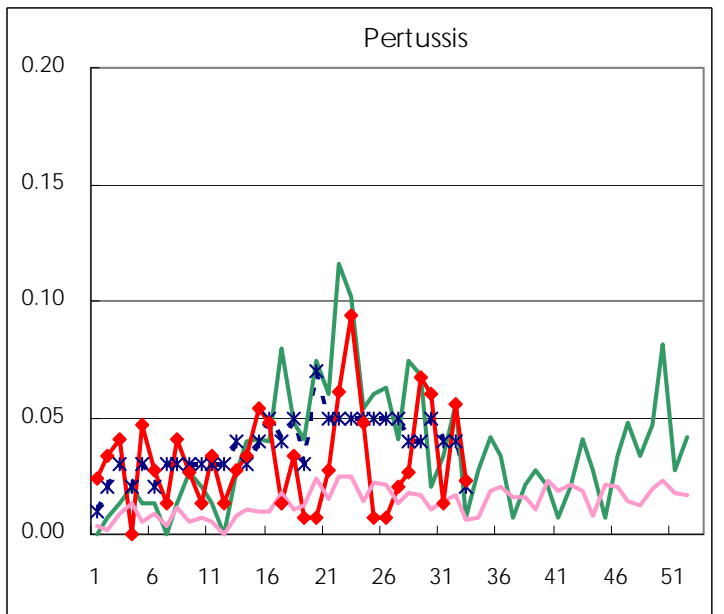
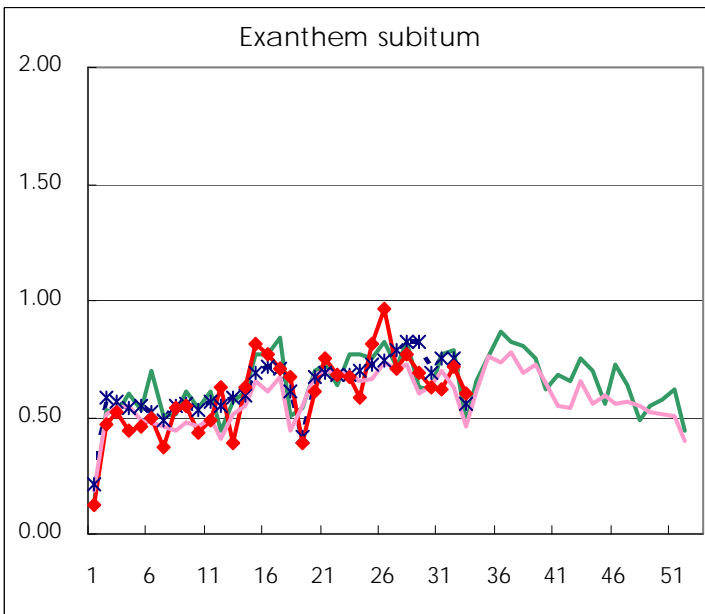
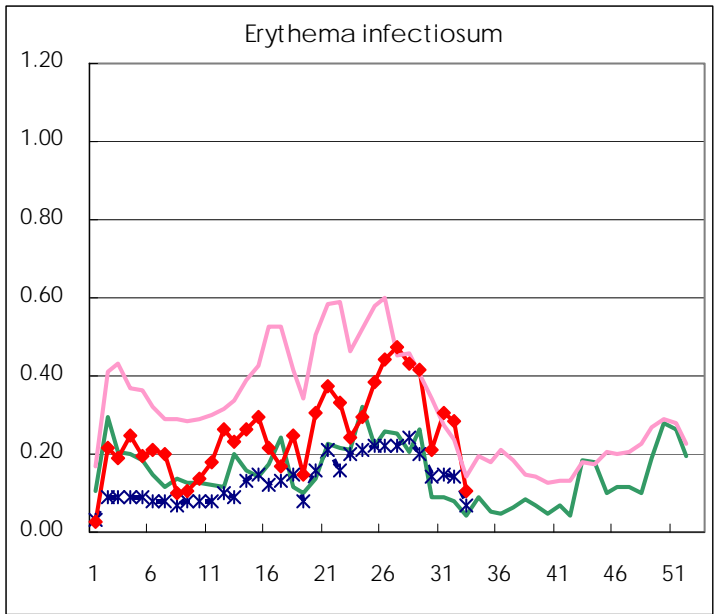
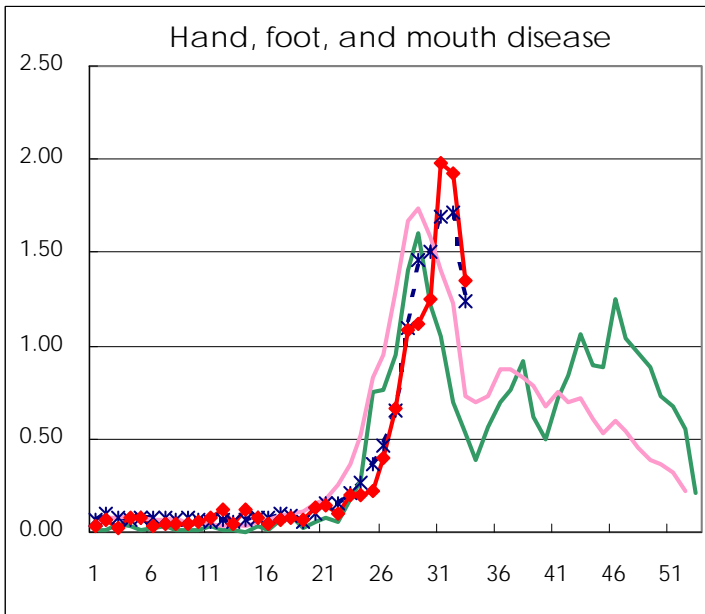
Number of patients with the diseases to be reported
by the designated clinics and hospitals

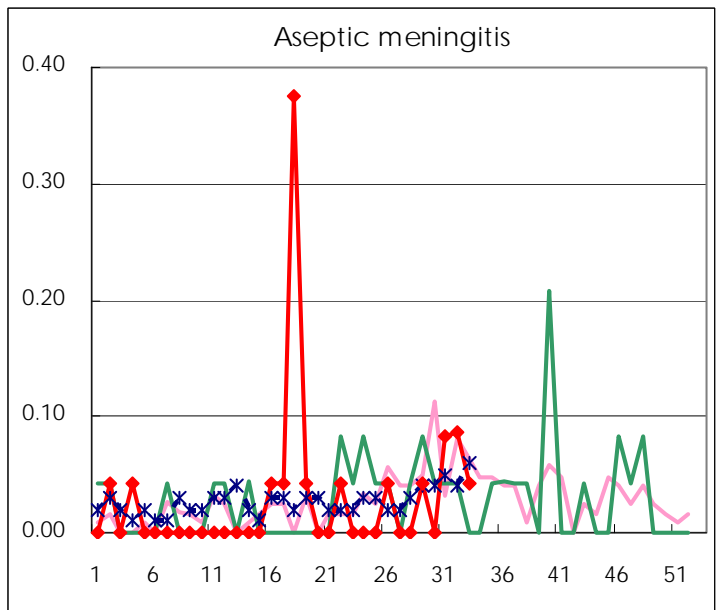
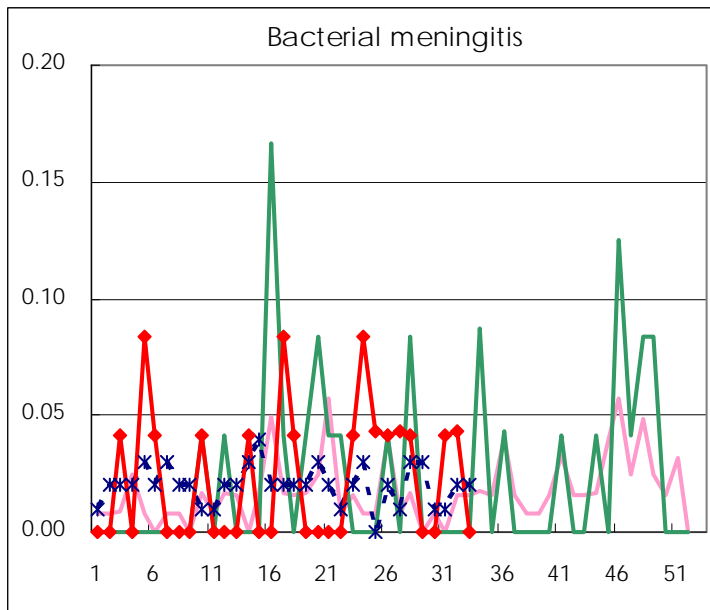
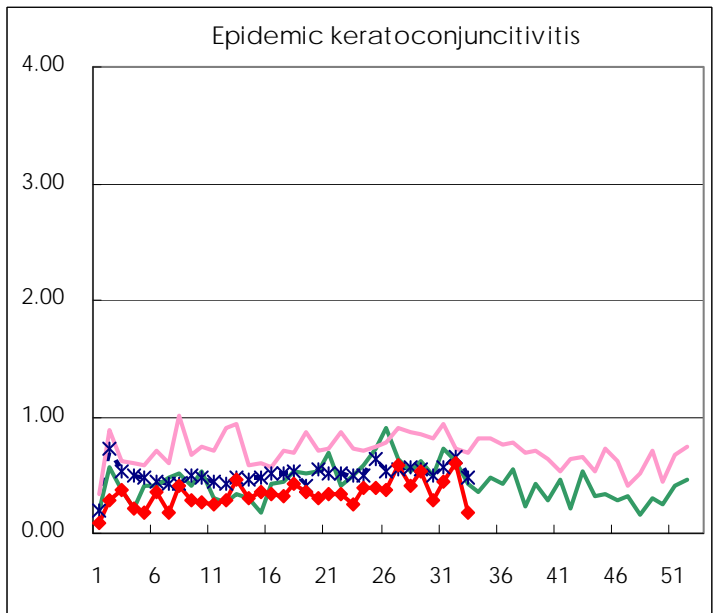
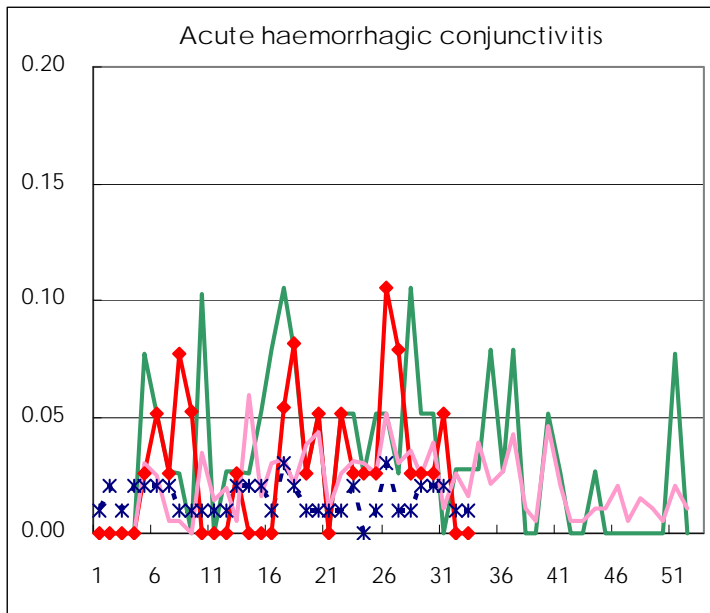
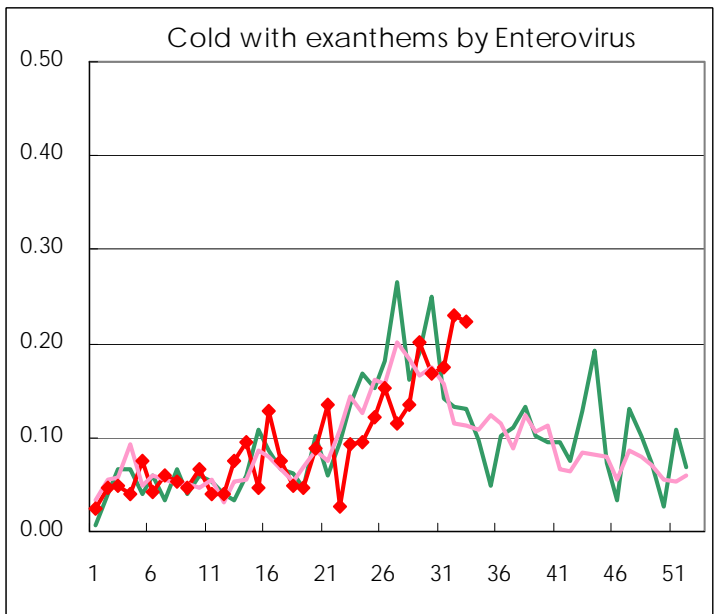
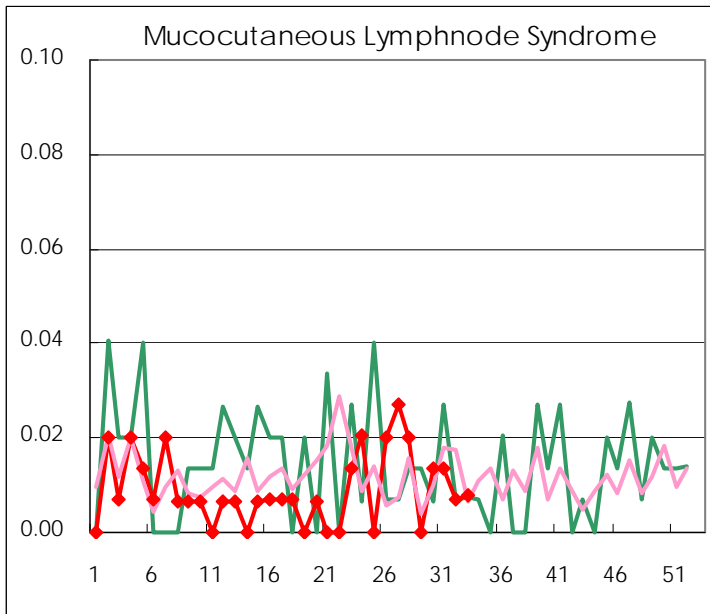
Diseases	2009				
	30th	31st	32nd	33rd	/sentinel
Respiratory syncytial virus infection	7	7	19	15	0.12
Pharyngoconjunctival fever	35	39	24	14	0.11
Group A streptococcal pharyngitis	119	95	86	50	0.38
Infectious gastroenteritis	437	459	404	218	1.68
Chickenpox	79	81	74	44	0.34
Hand, foot, and mouth disease	187	293	276	176	1.35
Erythema infectiosum	31	45	41	14	0.11
Exanthem subitum	94	92	103	78	0.60
Pertussis	9	2	8	3	0.02
Herpangina	167	257	286	183	1.41
Mumps	144	126	139	80	0.62
Cold with exanthems by Enterovirus	25	26	33	29	0.22
Mucocutaneous Lymphnode Syndrome	2	2	1	1	0.01
Influenza	82	277	466	545	2.14
Acute hemorrhagic conjunctivitis	1	2			
Epidemic keratoconjunctivitis	11	17	21	6	0.18
Bacterial meningitis		1	1		
Aseptic meningitis		2	2	1	0.04
Mycoplasma pneumonia	5	10	8	5	0.21
Chlamydial pneumonia (excluding psittacosis)				1	0.04

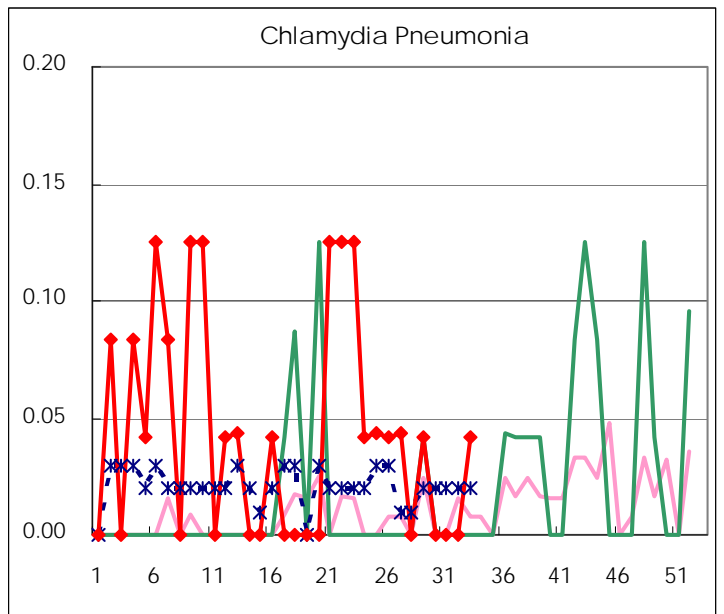
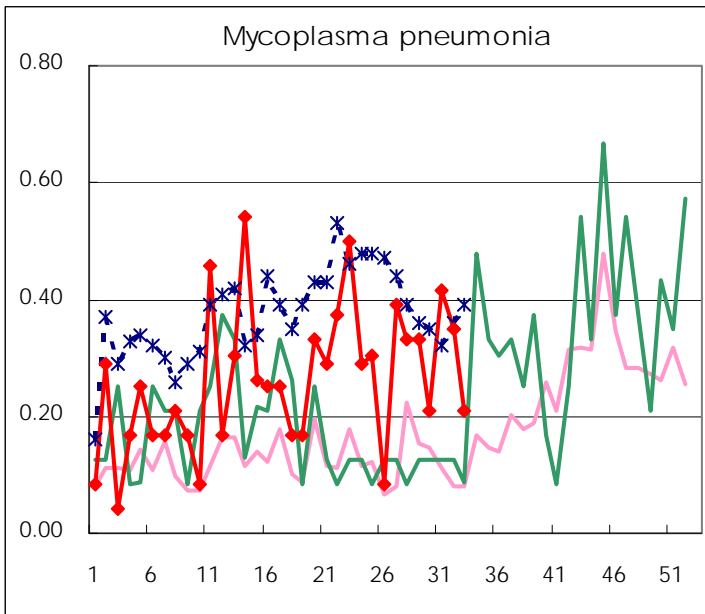
(Blank means 0.)

Disease Trend Graph (weekly reported cases per sentinel in comparison)









Number of sentinel facilities
for weekly reporting

Types of sentinels	Number of sentinels	Sentinels having reported
Pediatric	150	130
Influenza	290	255
Ophthalmic	39	34
Specially-designated	24	24

Tokyo Metropolitan Government
Infectious Disease Surveillance Center