
INFECTIOUS DISEASES WEEKLY REPORT

TOKYO IDWR

Tokyo Metropolitan Infectious Disease Surveillance Center

3 September 2009 / Number 35

Surveillance System in Tokyo, Japan

The infectious diseases which all physicians must report

All physicians must report to health centers the incidence of the diseases which are shown at page one. Health centers electronically report the individual cases to Tokyo Metropolitan Infectious Disease Surveillance Center.

The infectious diseases required to be reported by the sentinels

The numbers of patients who visit the sentinel clinics or hospitals during a week are reported to health centers in Tokyo. And they electronically report the numbers to Tokyo Metropolitan Infectious Disease Surveillance Center. We have about 400 sentinel clinics and hospitals in Tokyo.

1st Week is early January and 52nd Week is end of December.

Tokyo Metropolitan Institute of Public Health
Epidemiological Information Office

TEL:81-3-3363-3213 FAX:81-3-5332-7365
e-mail:idsc@tokyo-eiken.go.jp
URL:idsc.tokyo-eiken.go.jp/

Number of patients with the diseases which all physicians must report

Category	Diseases	Tokyo				Japan		
		32nd	33rd	34th	35th	Cum 2009	35th	Cum 2009
I	Ebola hemorrhagic fever							
	Crimean-Congo hemorrhagic fever							
	Smallpox							
	South American hemorrhagic fever							
	Plague							
	Marburg disease							
	Lassa fever							
II	Acute poliomyelitis							
	Tuberculosis	87	55	50	31	2717	243	17583
	Diphtheria							
	Severe Acute Respiratory Syndrome(SARS)							
	Avian influenza H5N1							
III	Cholera			1		2		7
	Shigellosis	1	3	4		30	1	115
	Enterohemorrhagic Escherichia coli infection	15	10	18	27	194	168	2,269
	Typhoid fever					10		20
	Paratyphoid fever				1	7		15
IV	Hepatitis E					6		33
	West Nile fever							
	Hepatitis A				1	11	2	87
	Echinococcosis					1		15
	Yellow fever							
	Psittacosis					1		15
	Omsk hemorrhagic fever							
	Relapsing fever							
	Kyasanur forest disease							
	Q fever					1		2
	Rabies							
	Coccidioidomycosis					1		2
	Monkeypox							
	Hemorrhagic fever with renal syndrome							
	Western equine encephalitis							
	Tick-borne encephalitis							
	Anthrax							
	Scrub typhus(Tsutsugamushi disease)					2		107
	Dengue fever			1	2	15	4	47
	Eastern equine encephalitis							
	Avian influenza (excluding H5N1)							
	Nipah virus infection							
	Japanese spotted fever							49
	Japanese encephalitis							
	Epidemic typhus							
	Hantavirus pulmonary syndrome							
	Herpes B virus infection							
	Glanders							
	Brucellosis							1
	Venezuelan equine encephalitis							
	Hendra virus infection							
Botulism								
Malaria	2	1		1	18	1	43	
Tularemia								
Lyme disease					1		5	
Lyssavirus infection(excluding rabies)								
Rift valley fever								
Melioidosis								
Legionellosis	2	1	2	3	38	7	462	
Leptospirosis							6	
Rocky mountain spotted fever								

Category	Diseases	Tokyo					Japan	
		32nd	33rd	34th	35th	Cum 2009	35th	Cum 2009
V	Amebiasis	7	3	2	1	93	3	533
	Viral hepatitis(excluding hepatitis A and E)			1		26	1	151
	Acute encephalitis(excluding JE and WNE)			1	2	17	5	156
	Cryptosporidiosis					1		12
	Creutzfeldt-Jakob disease				1	12	2	86
	Severe invasive streptococcal infections(TSLS)					9	1	80
	Acquired immunodeficiency syndrome (AIDS)	9	11	9	8	339	14	989
	Giardiasis		1			18		53
	Meningococcal meningitis					1		9
	Congenital rubella syndrome							
	Syphilis	6	1	1	9	141	9	479
	Tetanus	1				4	2	69
	Vancomycin-resistant S. aureus infection							
	Vancomycin-resistant Enterococcus infection		1	1		10	2	67
	Rubella	2			1	11	1	126
Measles	3	1	6		87	11	594	
Novel Flu	Novel influenza (swine-origin influenza A/H1N1) *	257	241	158	55	1183	—	**4986

* laboratory confirmed cases

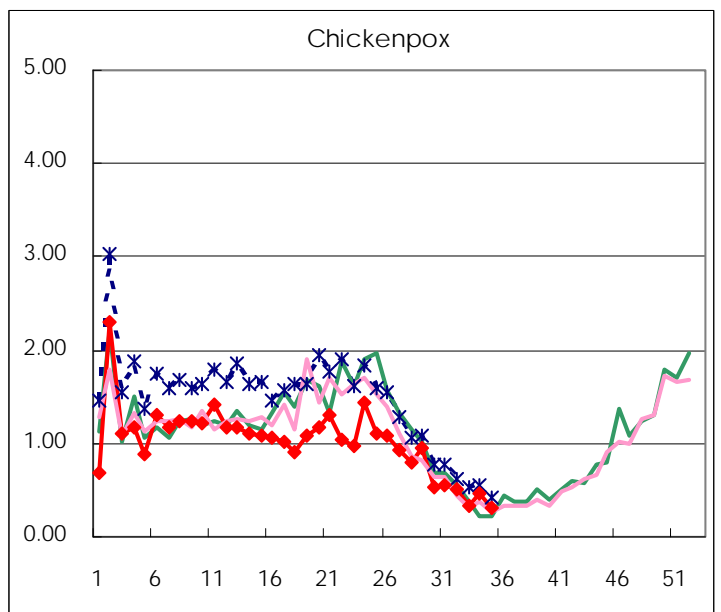
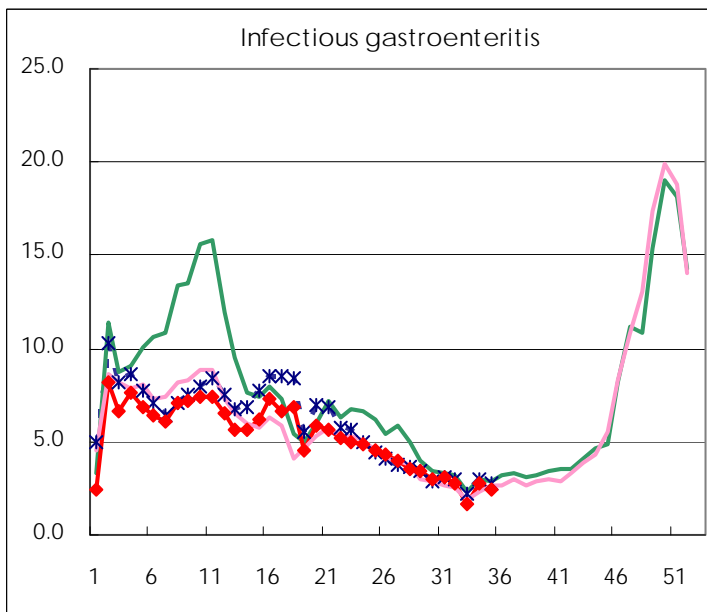
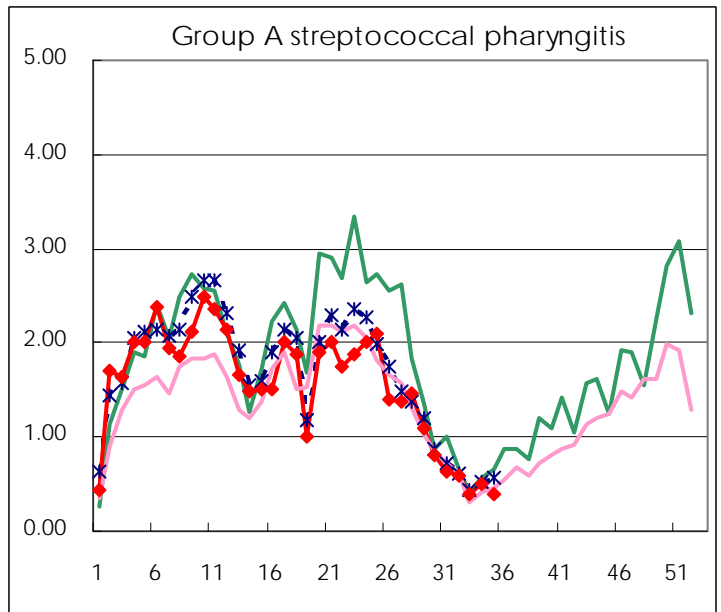
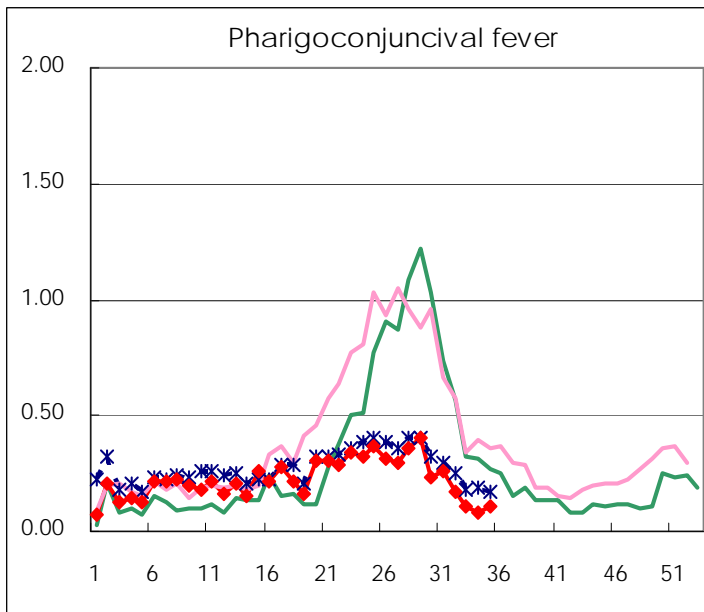
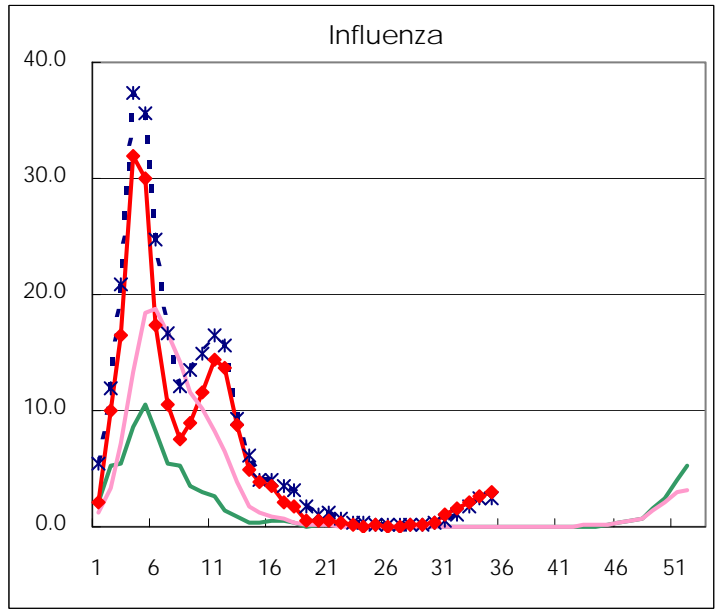
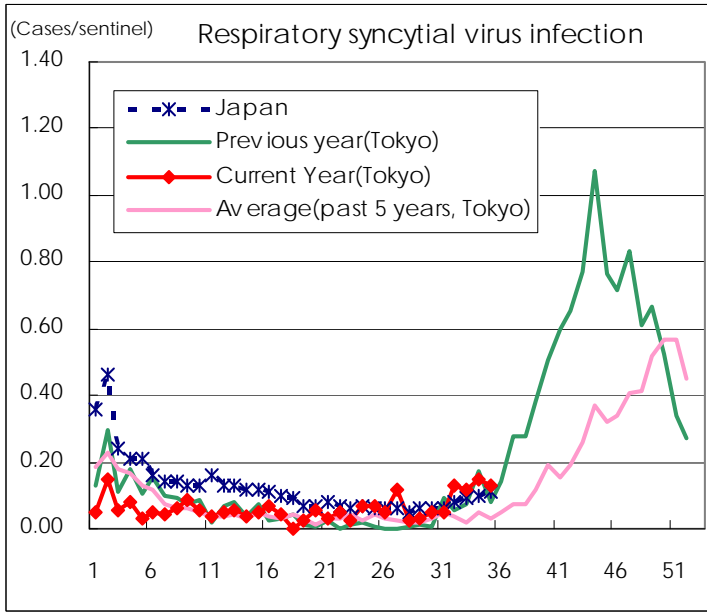
** As of July 24

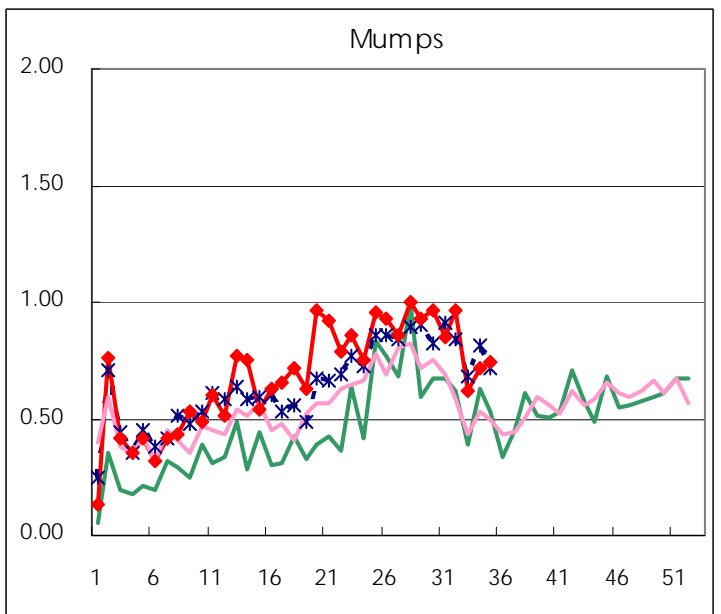
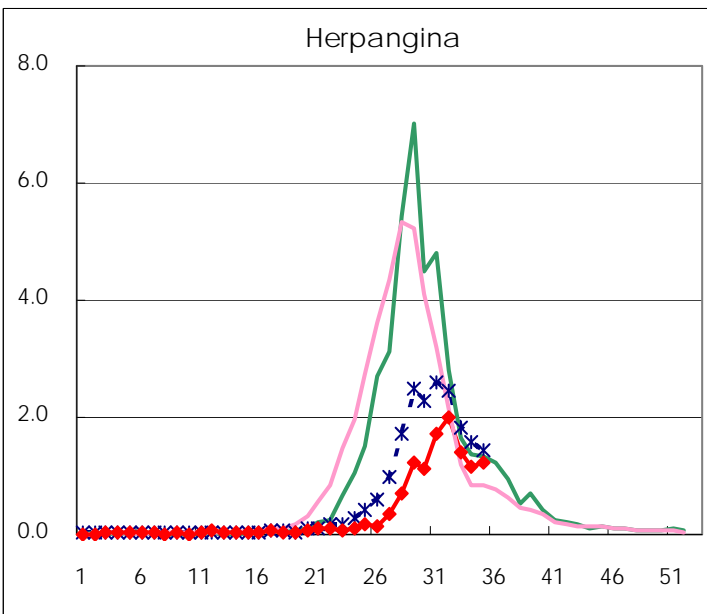
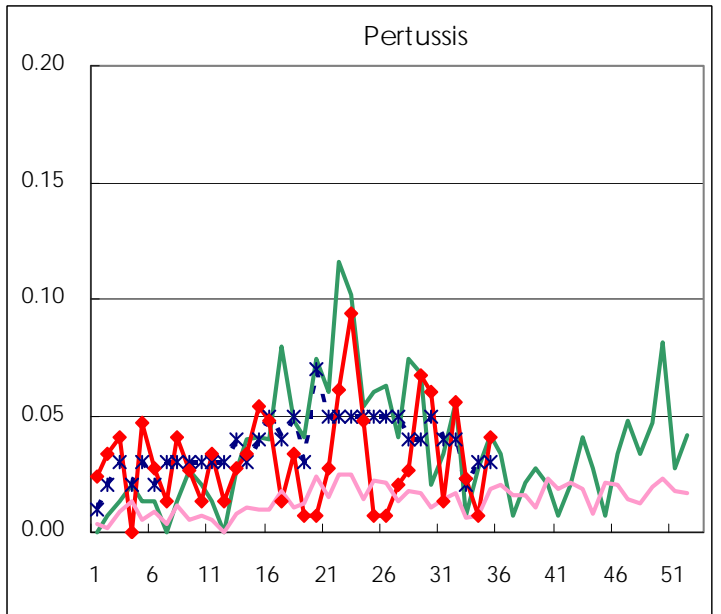
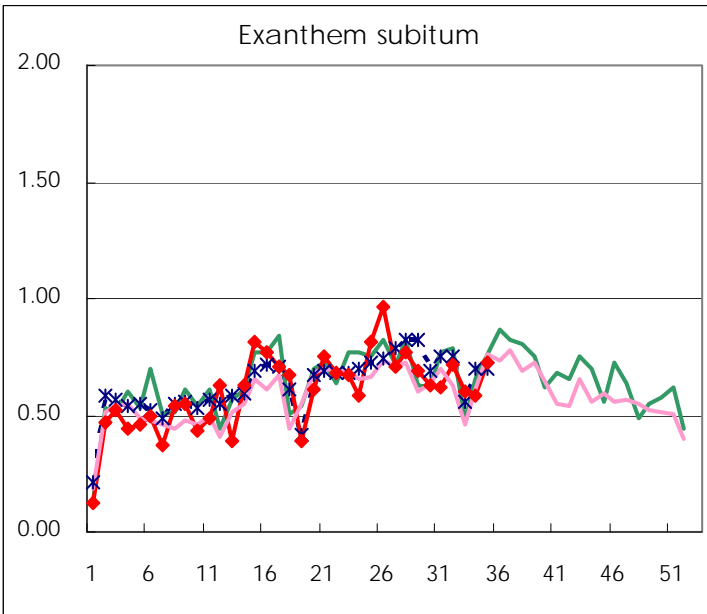
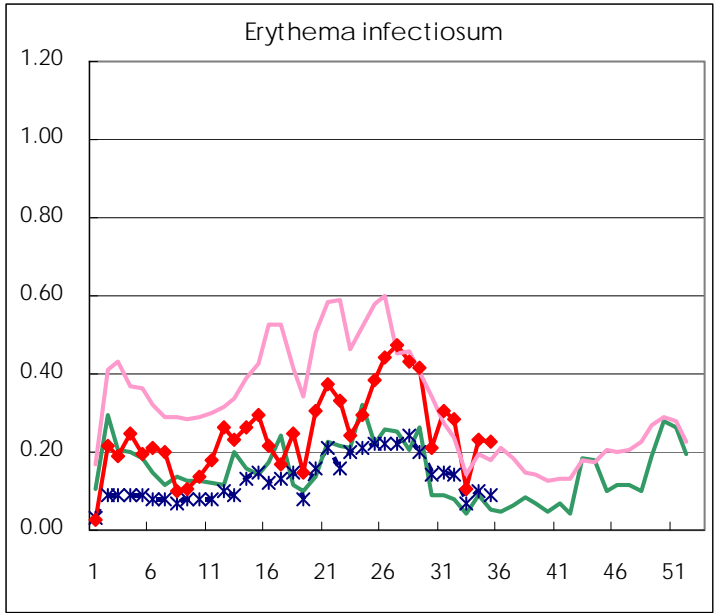
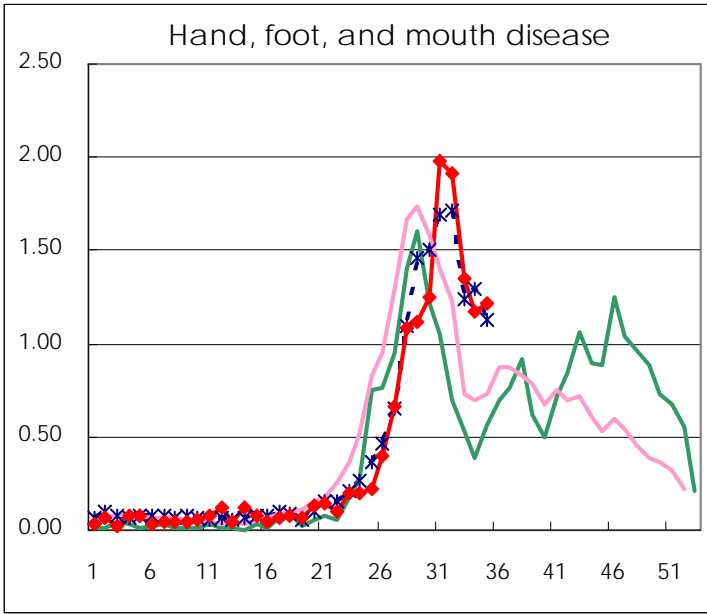
Number of patients with the diseases to be reported
by the designated clinics and hospitals

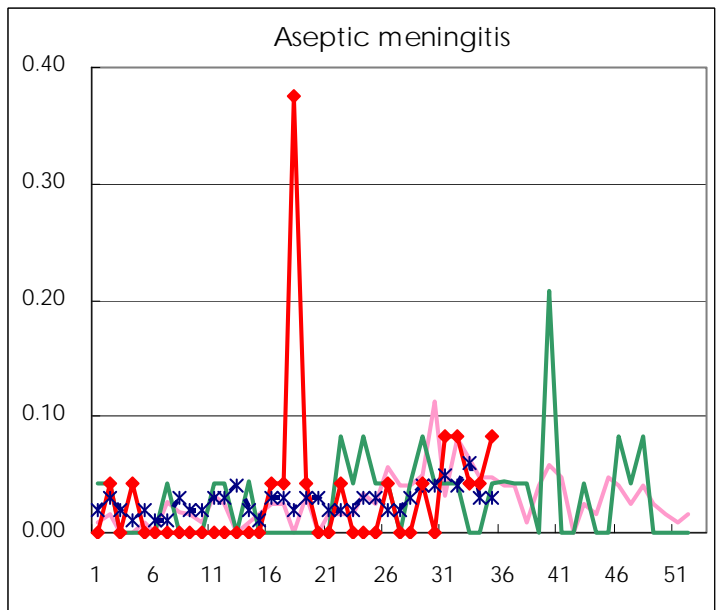
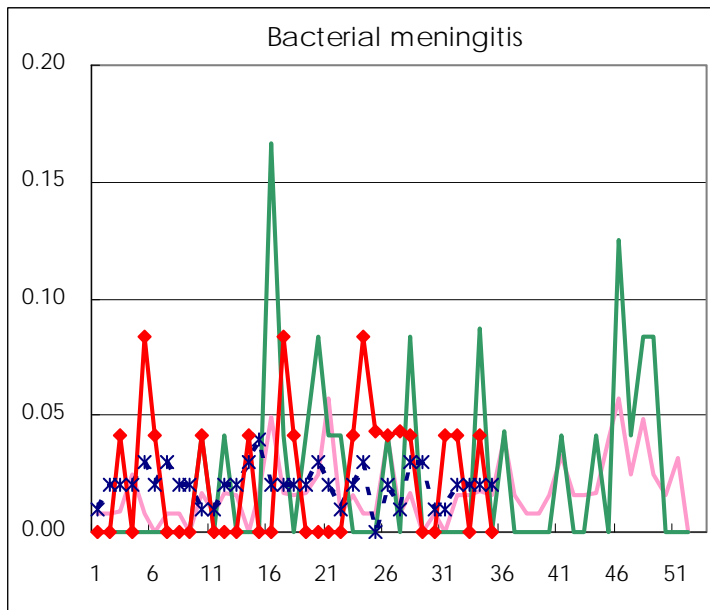
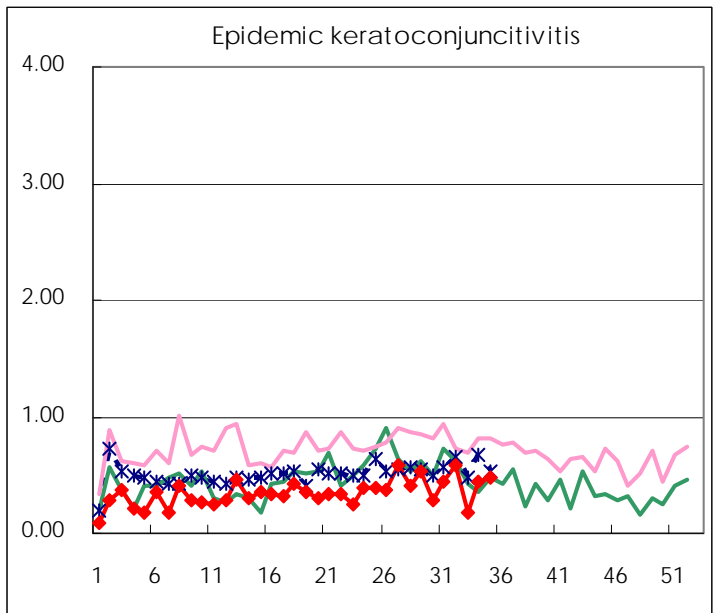
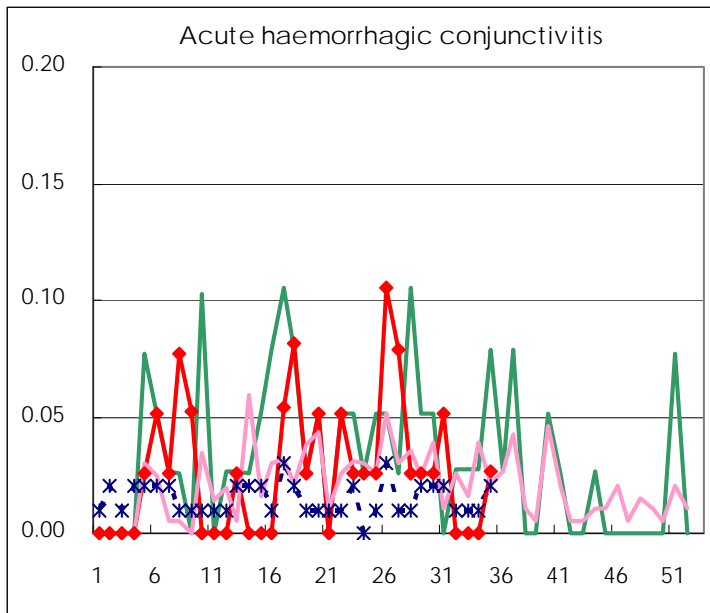
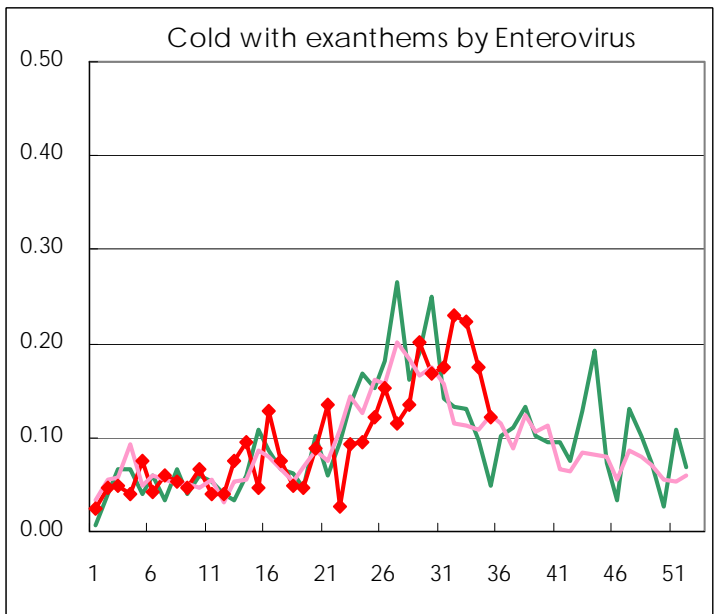
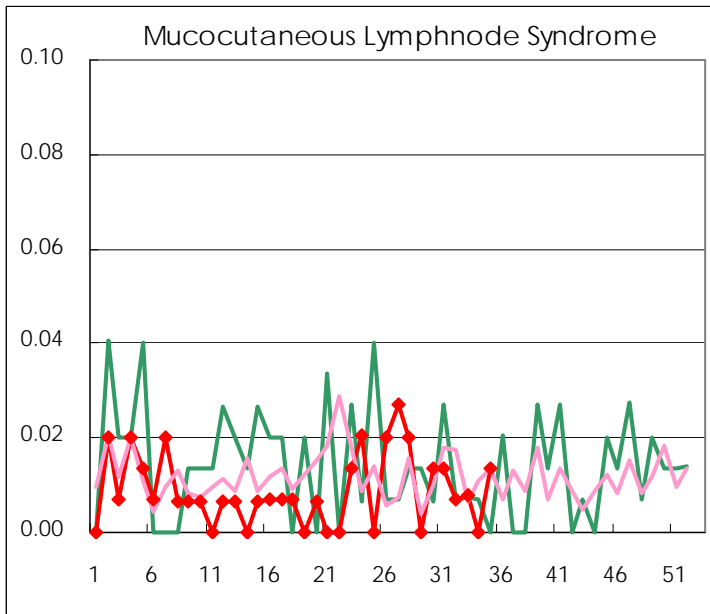
Diseases	2009				
	32nd	33rd	34th	35th	/sentinel
Respiratory syncytial virus infection	19	15	21	19	0.13
Pharyngoconjunctival fever	24	14	12	16	0.11
Group A streptococcal pharyngitis	86	50	73	58	0.39
Infectious gastroenteritis	404	218	392	362	2.46
Chickenpox	74	44	65	47	0.32
Hand, foot, and mouth disease	276	176	168	179	1.22
Erythema infectiosum	41	14	33	33	0.22
Exanthem subitum	103	78	84	107	0.73
Pertussis	8	3	1	6	0.04
Herpangina	286	183	166	178	1.21
Mumps	139	80	102	109	0.74
Cold with exanthems by Enterovirus	33	29	25	18	0.12
Mucocutaneous Lymphnode Syndrome	1	1		2	0.01
Influenza	466	550	737	856	3.01
Acute hemorrhagic conjunctivitis				1	0.03
Epidemic keratoconjunctivitis	21	6	17	18	0.47
Bacterial meningitis	1		1		
Aseptic meningitis	2	1	1	2	0.08
Mycoplasma pneumonia	8	5	6	6	0.25
Chlamydial pneumonia (excluding psittacosis)		1			

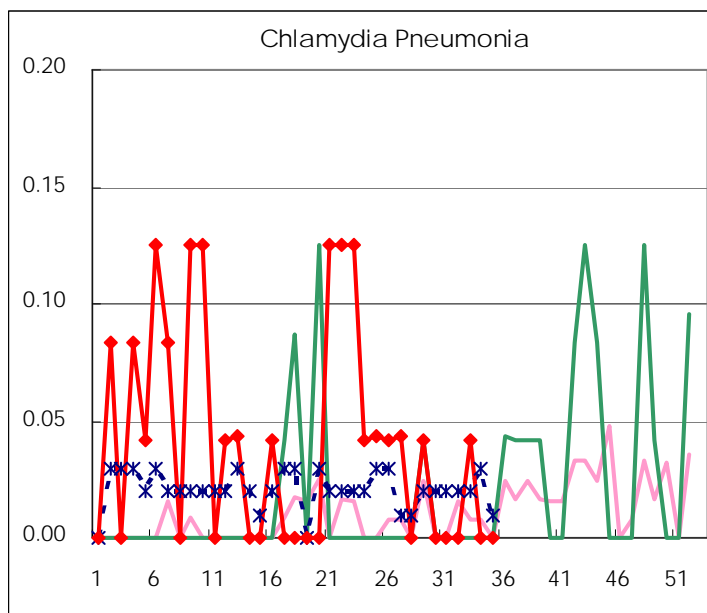
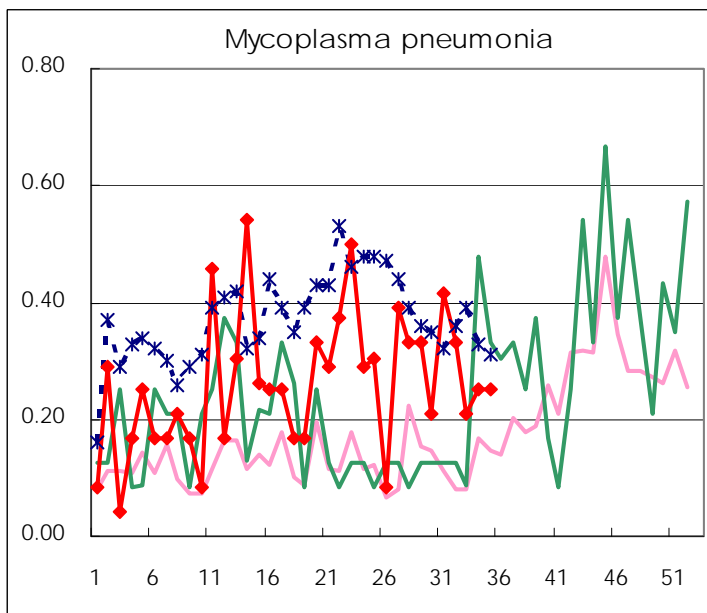
(Blank means 0.)

Disease Trend Graph (weekly reported cases per sentinel in comparison)









Number of sentinel facilities
for weekly reporting

Types of sentinels	Number of sentinels	Sentinels having reported
Pediatric	150	147
Influenza	290	284
Ophthalmic	39	38
Specially-designated	24	24

Tokyo Metropolitan Government
Infectious Disease Surveillance Center