
INFECTIOUS DISEASES WEEKLY REPORT

TOKYO IDWR

Tokyo Metropolitan Infectious Disease Surveillance Center

10 September 2009 / Number 36

Surveillance System in Tokyo, Japan

The infectious diseases which all physicians must report

All physicians must report to health centers the incidence of the diseases which are shown at page one. Health centers electronically report the individual cases to Tokyo Metropolitan Infectious Disease Surveillance Center.

The infectious diseases required to be reported by the sentinels

The numbers of patients who visit the sentinel clinics or hospitals during a week are reported to health centers in Tokyo. And they electronically report the numbers to Tokyo Metropolitan Infectious Disease Surveillance Center. We have about 400 sentinel clinics and hospitals in Tokyo.

1st Week is early January and 52nd Week is end of December.

Tokyo Metropolitan Institute of Public Health
Epidemiological Information Office

TEL:81-3-3363-3213 FAX:81-3-5332-7365

e-mail:idsc@tokyo-eiken.go.jp

URL:idsc.tokyo-eiken.go.jp/

Number of patients with the diseases which all physicians must report

Category	Diseases	Tokyo				Japan		
		33rd	34th	35th	36th	Cum 2009	36th	Cum 2009
I	Ebola hemorrhagic fever							
	Crimean-Congo hemorrhagic fever							
	Smallpox							
	South American hemorrhagic fever							
	Plague							
	Marburg disease							
	Lassa fever							
II	Acute poliomyelitis							
	Tuberculosis	58	57	49	39	2786	262	18139
	Diphtheria							
	Severe Acute Respiratory Syndrome(SARS)							
Avian influenza H5N1								
III	Cholera		1			2		7
	Shigellosis	3	4			30	1	116
	Enterohemorrhagic Escherichia coli infection	10	18	29	13	209	170	2,499
	Typhoid fever					10		22
	Paratyphoid fever			1		7		15
IV	Hepatitis E					6		34
	West Nile fever							
	Hepatitis A			1	3	14	4	91
	Echinococcosis					1		16
	Yellow fever							
	Psittacosis					1		15
	Omsk hemorrhagic fever							
	Relapsing fever							
	Kyasanur forest disease							
	Q fever					1		2
	Rabies							
	Coccidioidomycosis					1		2
	Monkeypox							
	Hemorrhagic fever with renal syndrome							
	Western equine encephalitis							
	Tick-borne encephalitis							
	Anthrax							
	Scrub typhus(Tsutsugamushi disease)					2		108
	Dengue fever		1	3	1	17	1	50
	Eastern equine encephalitis							
	Avian influenza (excluding H5N1)							
	Nipah virus infection							
	Japanese spotted fever						4	54
	Japanese encephalitis							
	Epidemic typhus							
	Hantavirus pulmonary syndrome							
	Herpes B virus infection							
	Glanders							
	Brucellosis							1
	Venezuelan equine encephalitis							
Hendra virus infection								
Botulism								
Malaria	1		1		18		43	
Tularemia								
Lyme disease					1		5	
Lyssavirus infection(excluding rabies)								
Rift valley fever								
Melioidosis								
Legionellosis	1	2	3	2	40	10	481	
Leptospirosis							6	
Rocky mountain spotted fever								

Category	Diseases	Tokyo				Japan		
		33rd	34th	35th	36th	Cum 2009	36th	Cum 2009
V	Amebiasis	3	2	1	4	97	7	546
	Viral hepatitis(excluding hepatitis A and E)		1		1	27	2	157
	Acute encephalitis(excluding JE and WNE)		1	2		17	4	162
	Cryptosporidiosis					1		12
	Creutzfeldt-Jakob disease			1		12		87
	Severe invasive streptococcal infections(TSLS)					9	2	83
	Acquired immunodeficiency syndrome (AIDS)	11	8	8	4	342	7	1,001
	Giardiasis	1				18		53
	Meningococcal meningitis					1		9
	Congenital rubella syndrome						1	1
	Syphilis	1	1	9	4	145	7	492
	Tetanus				1	5	3	76
	Vancomycin-resistant S. aureus infection							
	Vancomycin-resistant Enterococcus infection	1	1			10	1	68
	Rubella			1		11	1	127
Measles	1	6			87	6	604	
Novel Flu	Novel influenza (swine-origin influenza A/H1N1) *	240	157	61	—	1187	—	**4986

* laboratory confirmed cases and suspected cases

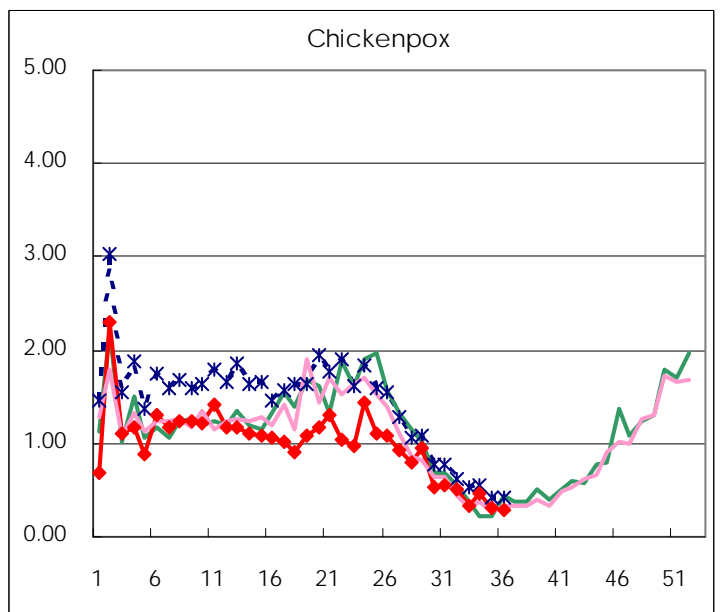
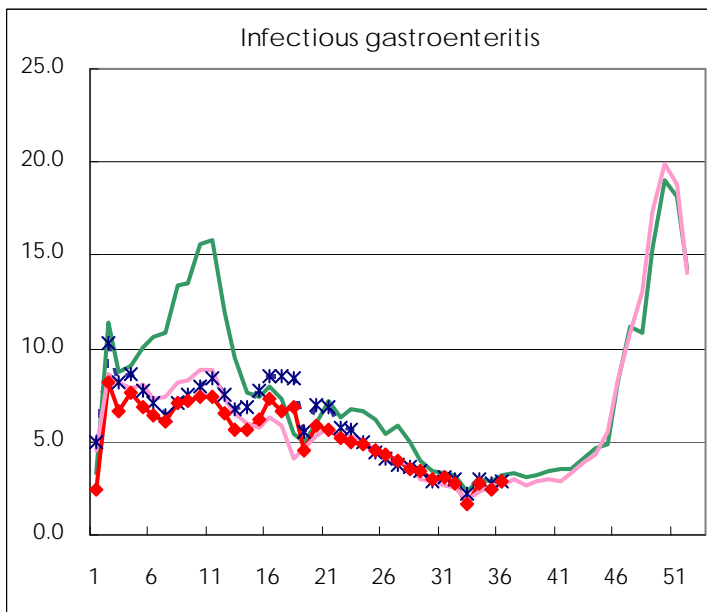
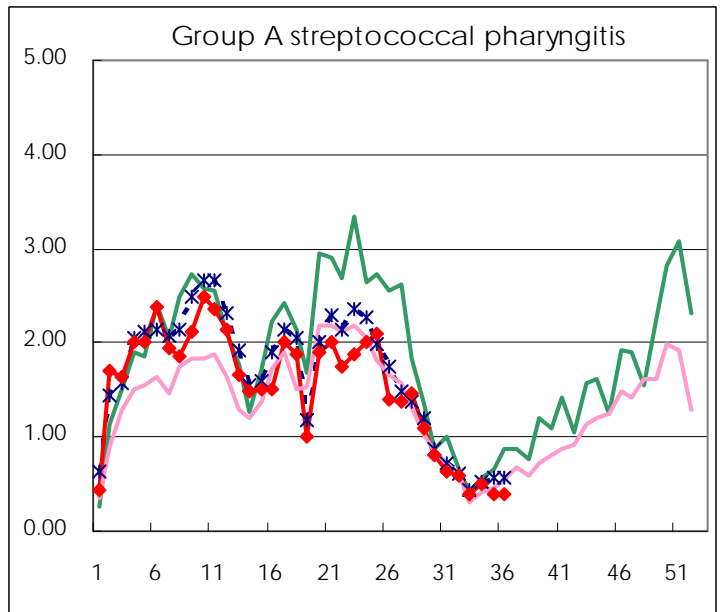
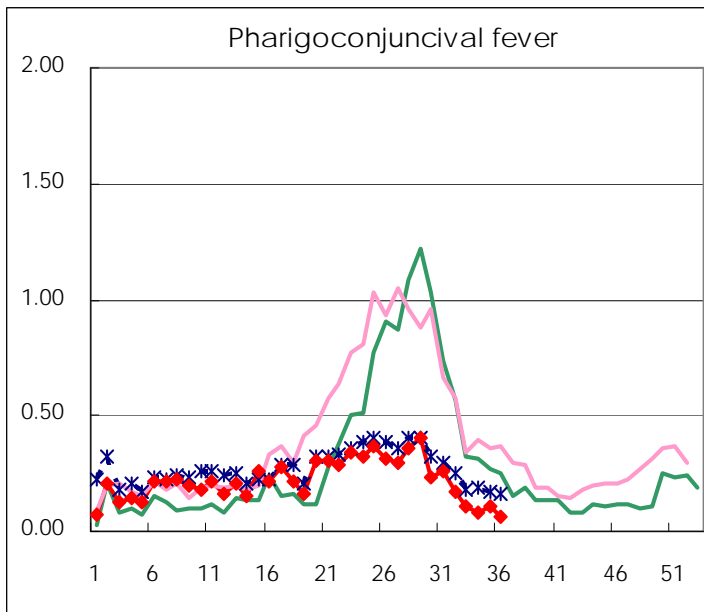
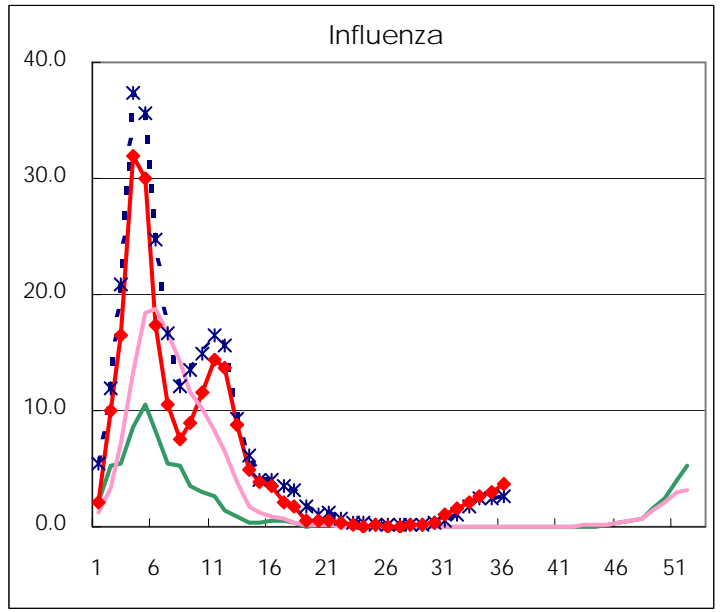
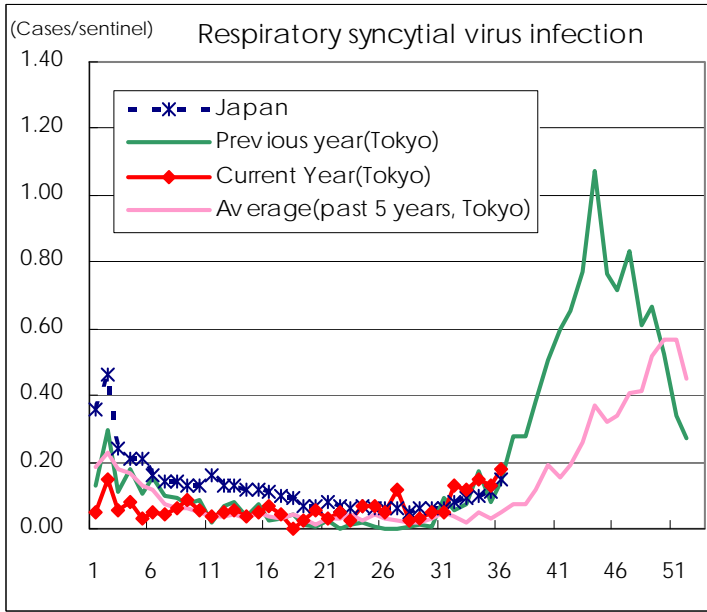
** As of July 24

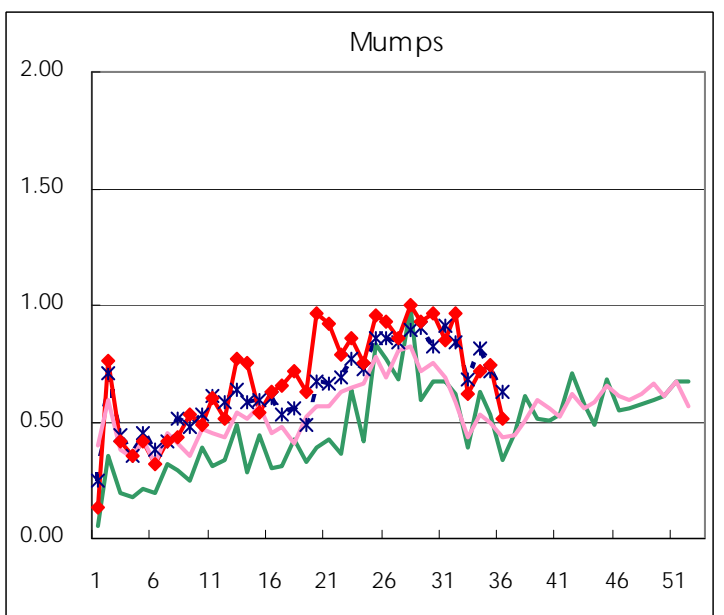
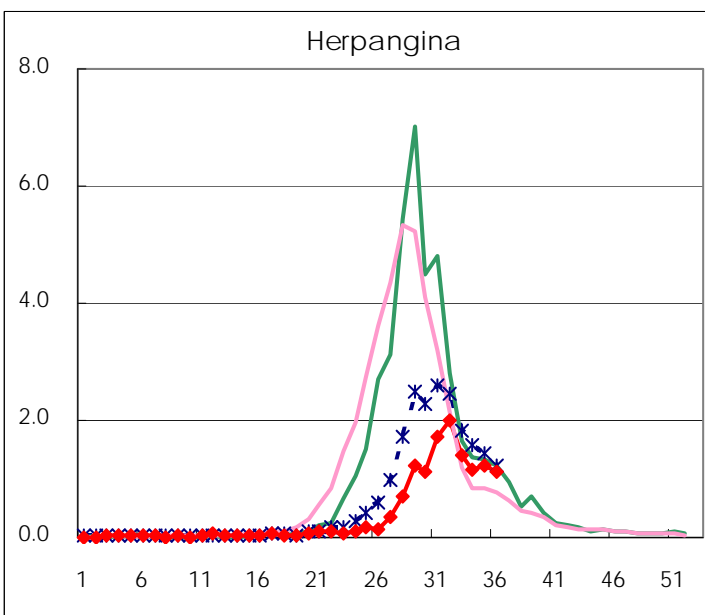
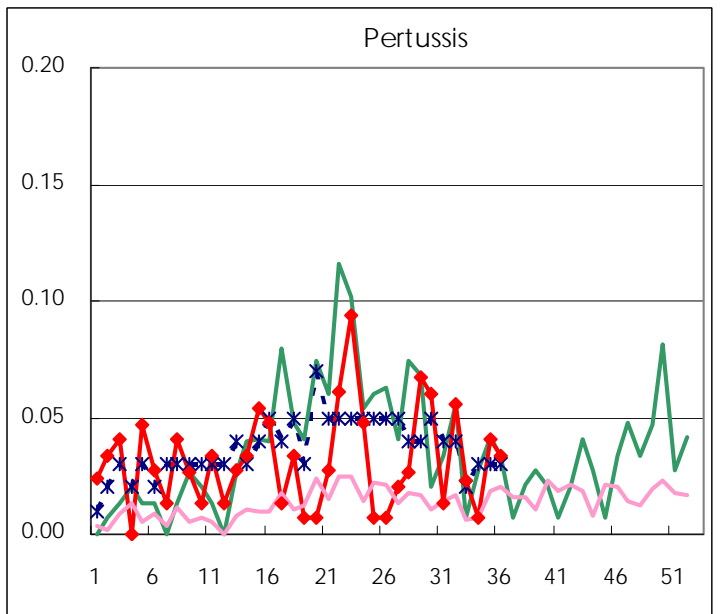
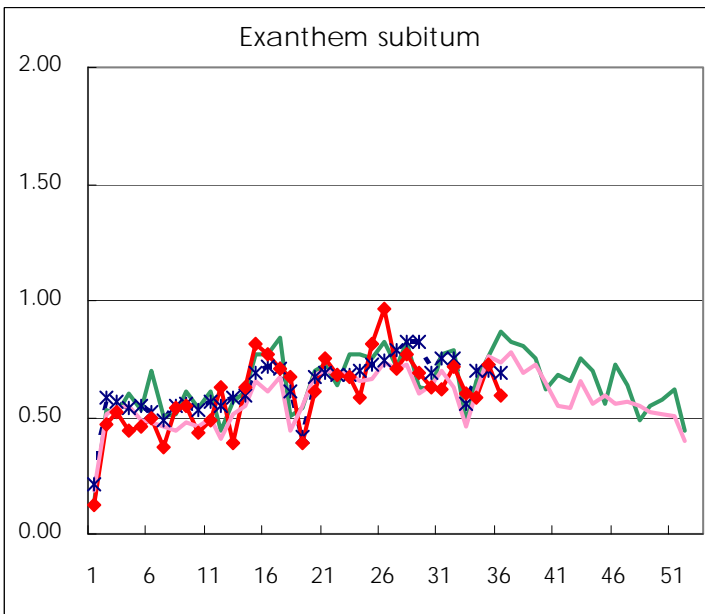
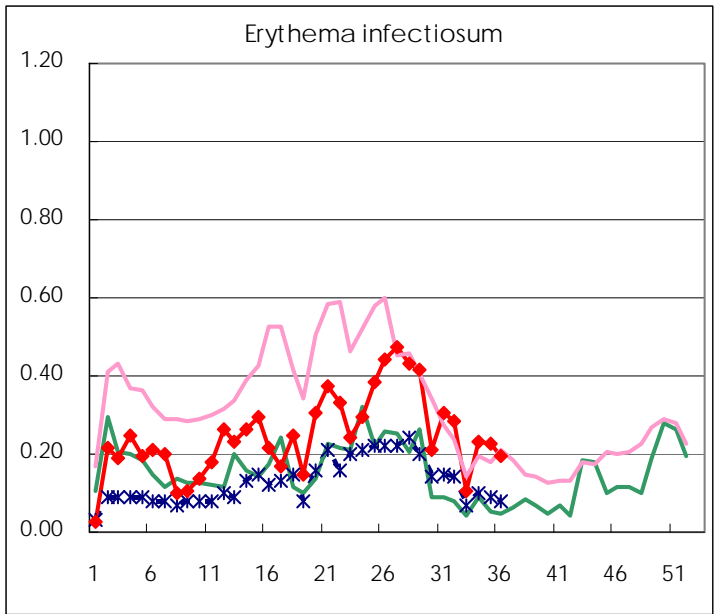
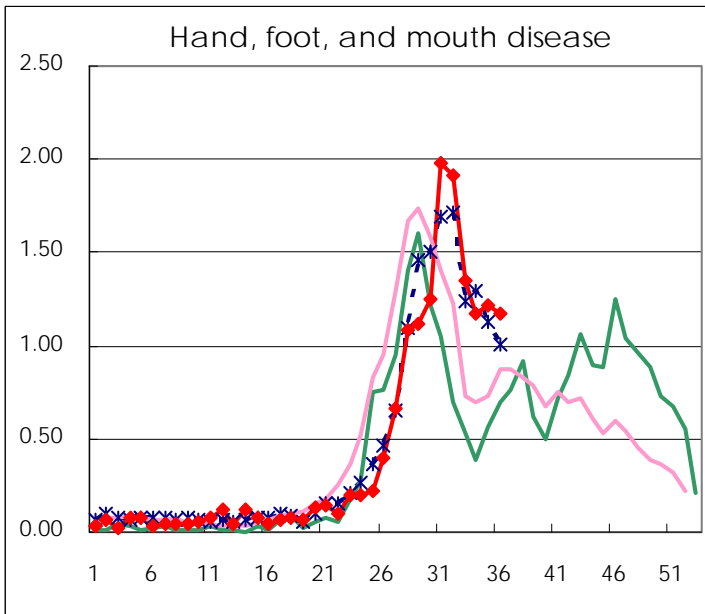
Number of patients with the diseases to be reported
by the designated clinics and hospitals

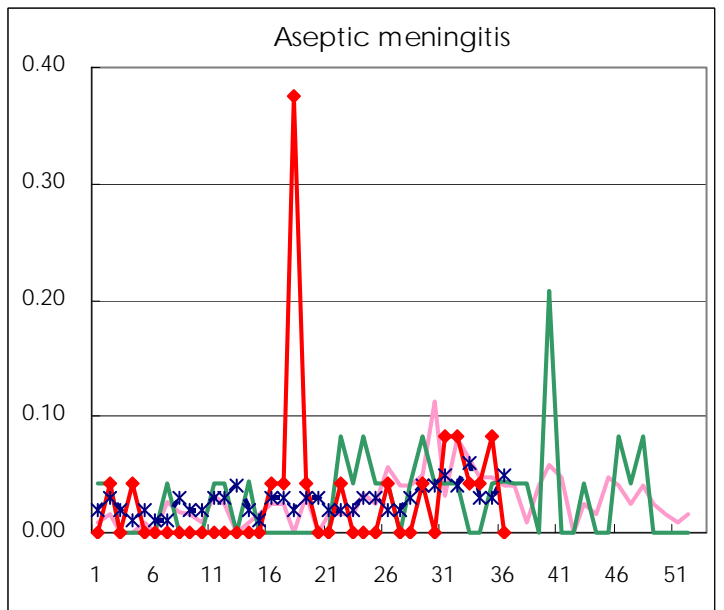
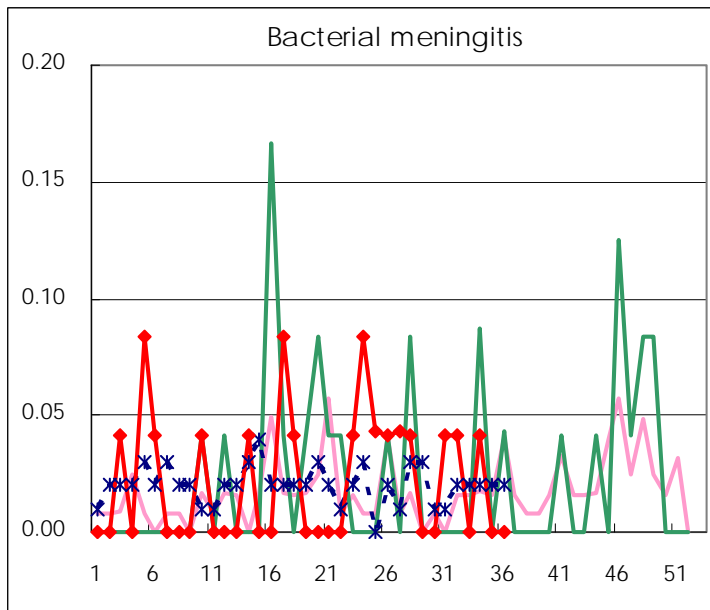
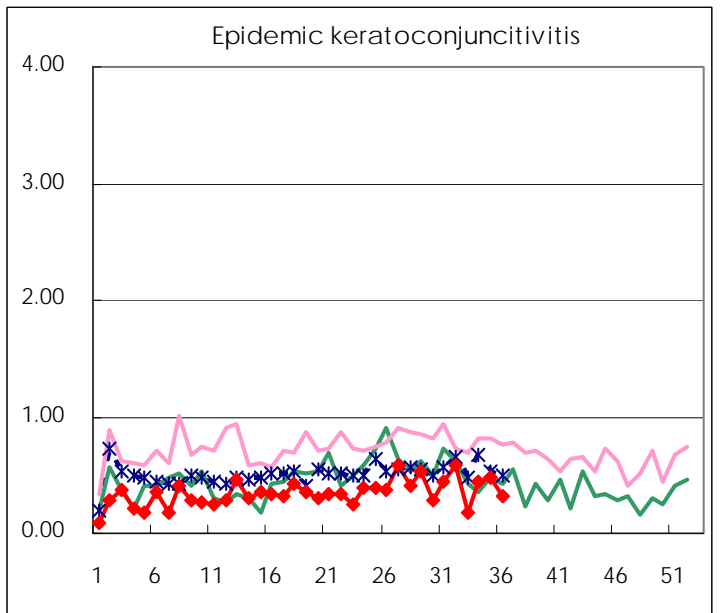
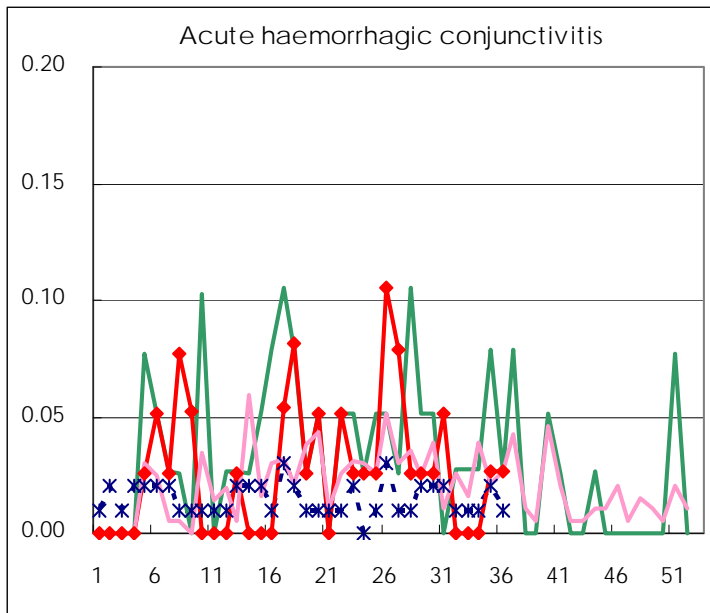
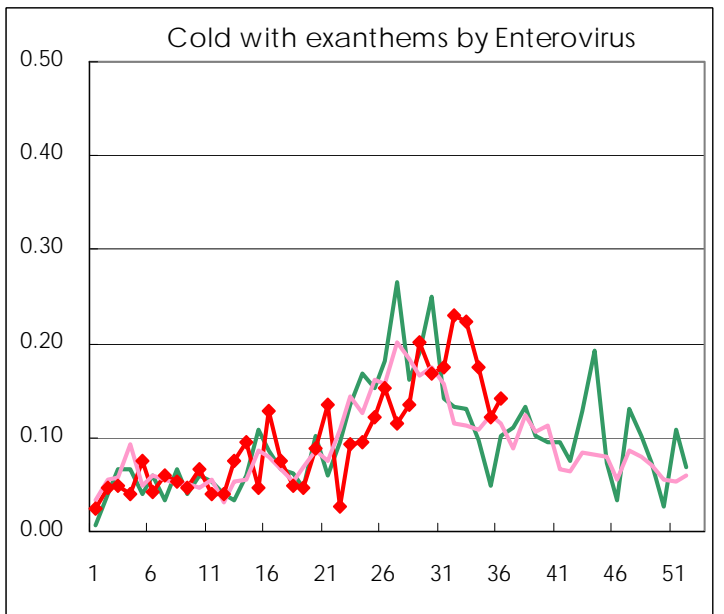
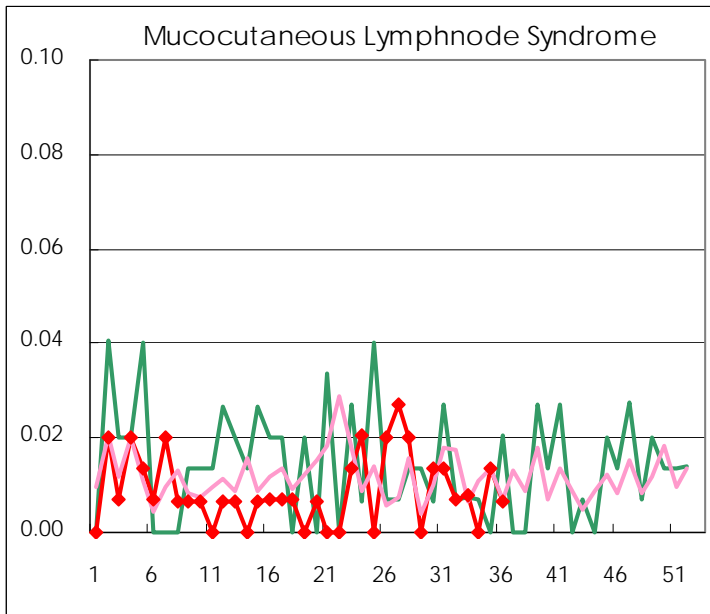
Diseases	2009				
	33rd	34th	35th	36th	/sentinel
Respiratory syncytial virus infection	15	21	19	27	0.18
Pharyngoconjunctival fever	14	12	16	9	0.06
Group A streptococcal pharyngitis	50	73	58	59	0.40
Infectious gastroenteritis	218	392	362	422	2.83
Chickenpox	44	65	47	44	0.30
Hand, foot, and mouth disease	176	168	179	174	1.17
Erythema infectiosum	14	33	33	29	0.19
Exanthem subitum	78	84	107	88	0.59
Pertussis	3	1	6	5	0.03
Herpangina	183	166	178	169	1.13
Mumps	80	102	109	77	0.52
Cold with exanthems by Enterovirus	29	25	18	21	0.14
Mucocutaneous Lymphnode Syndrome	1		2	1	0.01
Influenza	550	737	856	1,057	3.66
Acute hemorrhagic conjunctivitis			1	1	0.03
Epidemic keratoconjunctivitis	6	17	18	12	0.32
Bacterial meningitis		1			
Aseptic meningitis	1	1	2		
Mycoplasma pneumonia	5	6	6		
Chlamydial pneumonia (excluding psittacosis)	1				

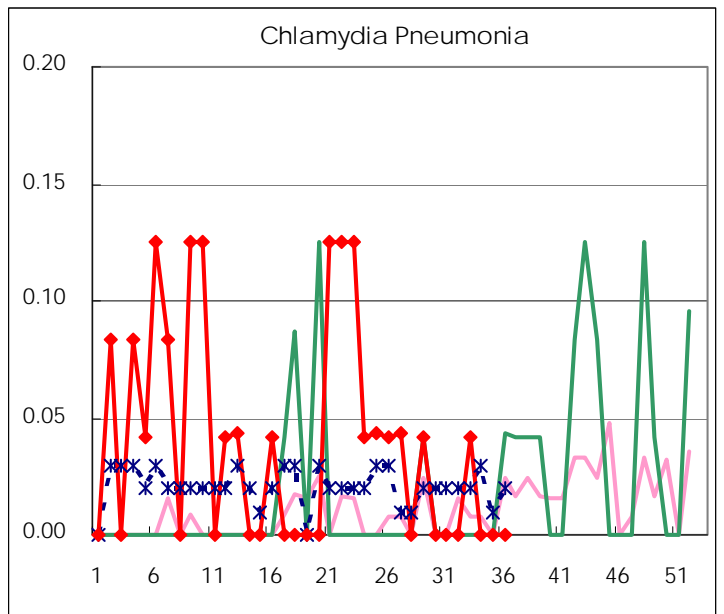
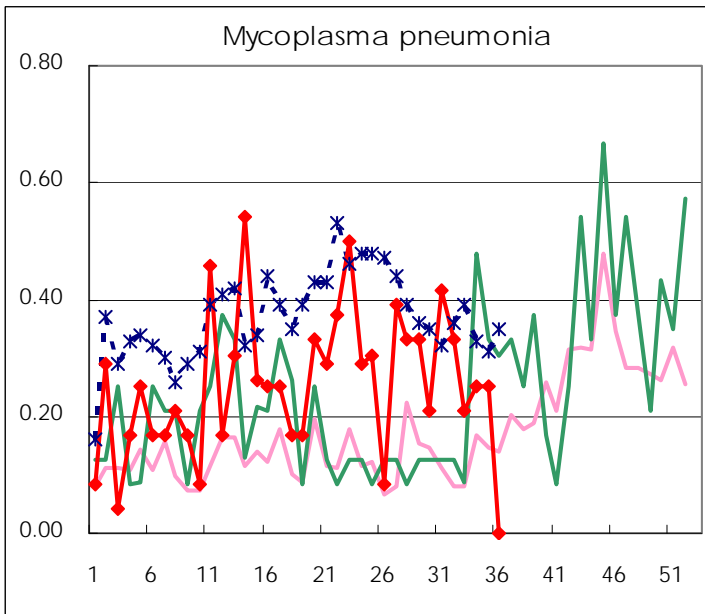
(Blank means 0.)

Disease Trend Graph (weekly reported cases per sentinel in comparison)









Number of sentinel facilities
for weekly reporting

Types of sentinels	Number of sentinels	Sentinels having reported
Pediatric	150	149
Influenza	290	289
Ophthalmic	39	38
Specially-designated	24	24

Tokyo Metropolitan Government
Infectious Disease Surveillance Center