
INFECTIOUS DISEASES WEEKLY REPORT

TOKYO IDWR

Tokyo Metropolitan Infectious Disease Surveillance Center

17 September 2009 / Number 37

Surveillance System in Tokyo, Japan

The infectious diseases which all physicians must report

All physicians must report to health centers the incidence of the diseases which are shown at page one. Health centers electronically report the individual cases to Tokyo Metropolitan Infectious Disease Surveillance Center.

The infectious diseases required to be reported by the sentinels

The numbers of patients who visit the sentinel clinics or hospitals during a week are reported to health centers in Tokyo. And they electronically report the numbers to Tokyo Metropolitan Infectious Disease Surveillance Center. We have about 400 sentinel clinics and hospitals in Tokyo.

1st Week is early January and 52nd Week is end of December.

Tokyo Metropolitan Institute of Public Health
Epidemiological Information Office

TEL:81-3-3363-3213 FAX:81-3-5332-7365

e-mail:idsc@tokyo-eiken.go.jp

URL:idsc.tokyo-eiken.go.jp/

Number of patients with the diseases which all physicians must report

Category	Diseases	Tokyo				Japan		
		34th	35th	36th	37th	Cum 2009	37th	Cum 2009
I	Ebola hemorrhagic fever							
	Crimean-Congo hemorrhagic fever							
	Smallpox							
	South American hemorrhagic fever							
	Plague							
	Marburg disease							
	Lassa fever							
II	Acute poliomyelitis							
	Tuberculosis	59	58	52	62	2878	319	18667
	Diphtheria							
	Severe Acute Respiratory Syndrome(SARS)							
	Avian influenza H5N1							
III	Cholera	1				2		8
	Shigellosis	4				30	2	118
	Enterohemorrhagic Escherichia coli infection	18	29	13	21	230	126	2,666
	Typhoid fever					10		22
	Paratyphoid fever		1			7		15
IV	Hepatitis E					6		35
	West Nile fever							
	Hepatitis A		1	3	1	15		93
	Echinococcosis					1		16
	Yellow fever							
	Psittacosis					1		15
	Omsk hemorrhagic fever							
	Relapsing fever							
	Kyasanur forest disease							
	Q fever					1		2
	Rabies							
	Coccidioidomycosis					1		2
	Monkeypox							
	Hemorrhagic fever with renal syndrome							
	Western equine encephalitis							
	Tick-borne encephalitis							
	Anthrax							
	Scrub typhus(Tsutsugamushi disease)					2		108
	Dengue fever	1	3	1	2	19	1	53
	Eastern equine encephalitis							
	Avian influenza (excluding H5N1)							
	Nipah virus infection							
	Japanese spotted fever						4	60
	Japanese encephalitis							
	Epidemic typhus							
	Hantavirus pulmonary syndrome							
	Herpes B virus infection							
	Glanders							
	Brucellosis							1
	Venezuelan equine encephalitis							
Hendra virus infection								
Botulism								
Malaria		1		1	19		45	
Tularemia								
Lyme disease					1		5	
Lyssavirus infection(excluding rabies)								
Rift valley fever								
Melioidosis								
Legionellosis	2	3	2		40	6	491	
Leptospirosis							7	
Rocky mountain spotted fever								

Category	Diseases	Tokyo				Japan		
		34th	35th	36th	37th	Cum 2009	37th	Cum 2009
V	Amebiasis	2	1	4	4	101	8	564
	Viral hepatitis(excluding hepatitis A and E)	1		1		27	1	159
	Acute encephalitis(excluding JE and WNE)	1	2		2	19	4	170
	Cryptosporidiosis					1		12
	Creutzfeldt-Jakob disease		1		1	13	1	92
	Severe invasive streptococcal infections(TSLS)					9	1	85
	Acquired immunodeficiency syndrome (AIDS)	8	8	4	10	352	8	1,031
	Giardiasis					18	1	54
	Meningococcal meningitis					1		9
	Congenital rubella syndrome							1
	Syphilis	1	9	4		145	1	498
	Tetanus			1		5		76
	Vancomycin-resistant S. aureus infection							
	Vancomycin-resistant Enterococcus infection	1				10	2	72
	Rubella		1		1	12		128
Measles	6			1	88	13	619	
Novel Flu	Novel influenza (swine-origin influenza A/H1N1) *	157	61	—	—	1187	—	**11906

* laboratory confirmed cases and suspected cases

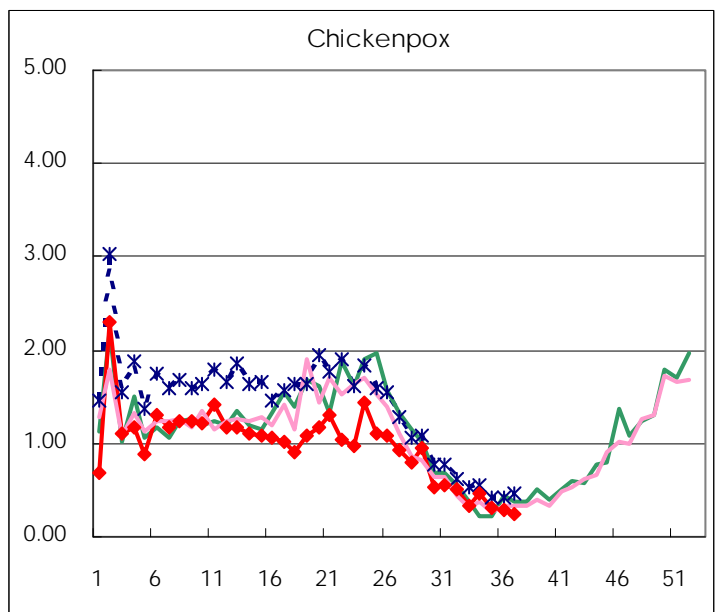
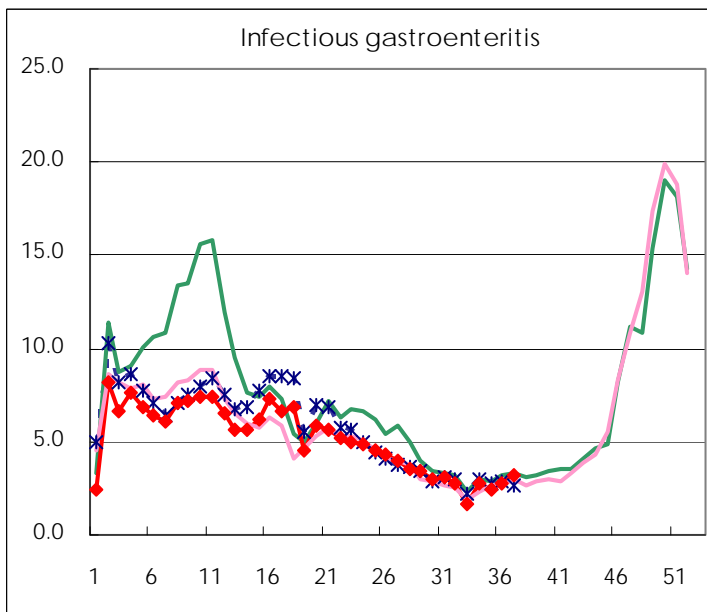
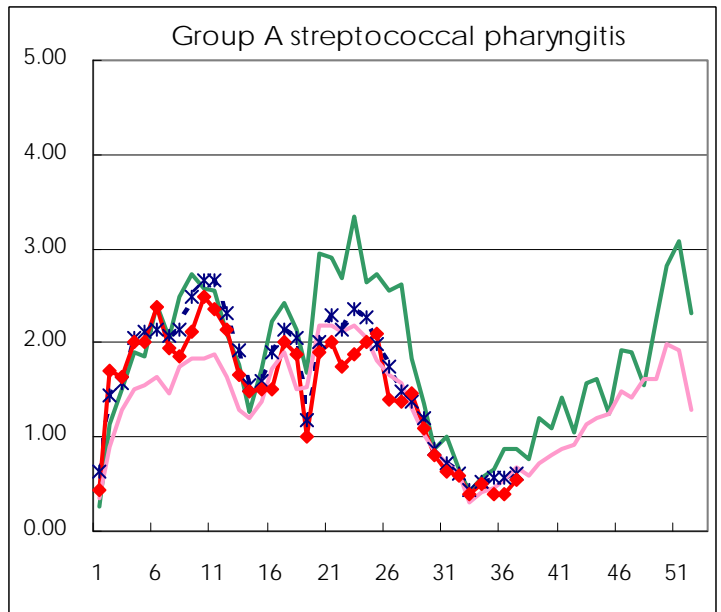
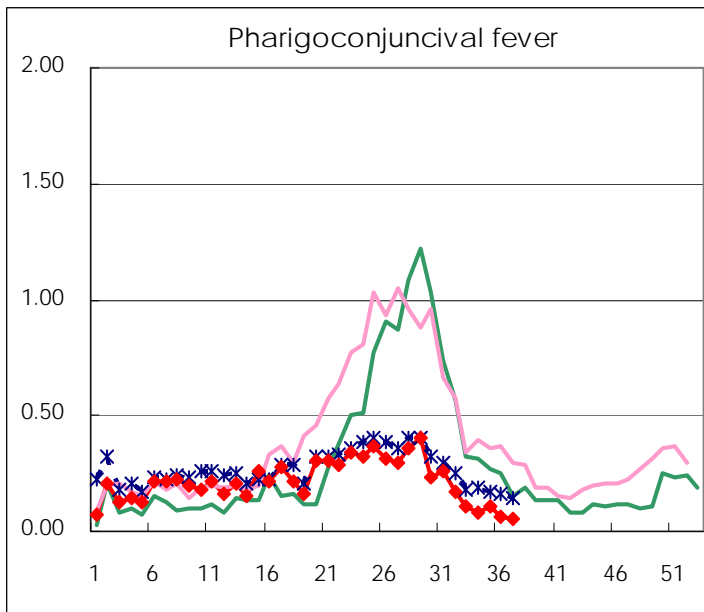
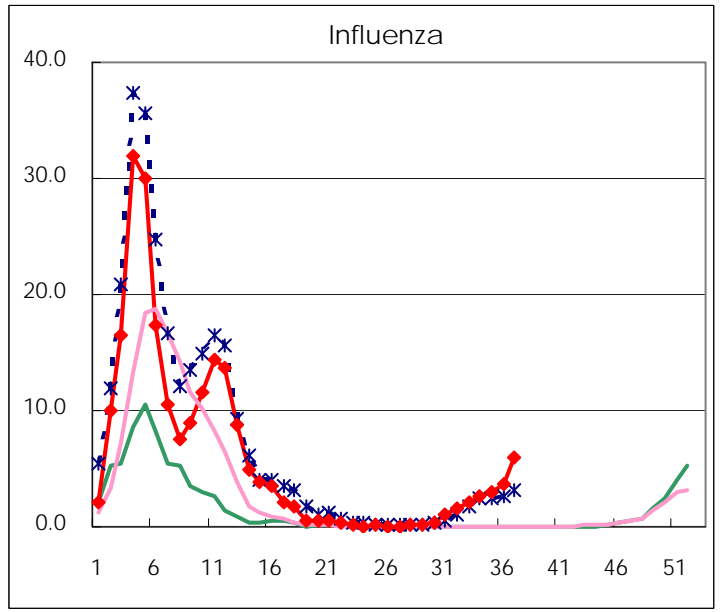
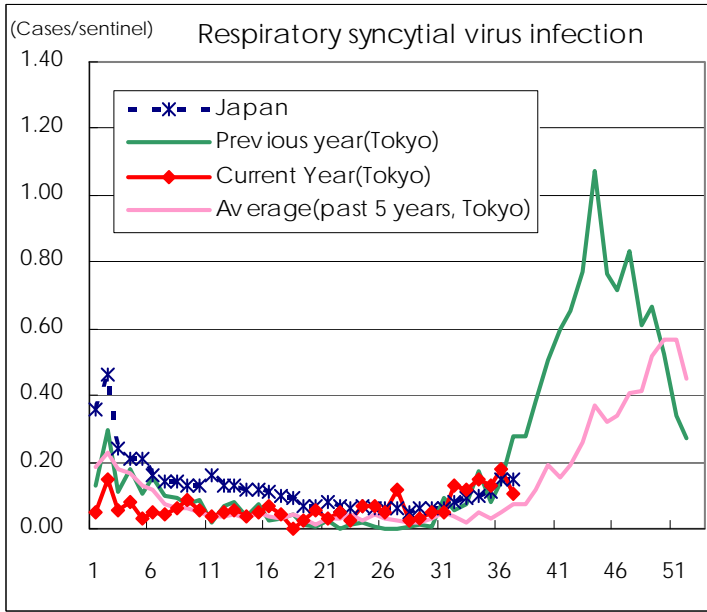
** As of July 24

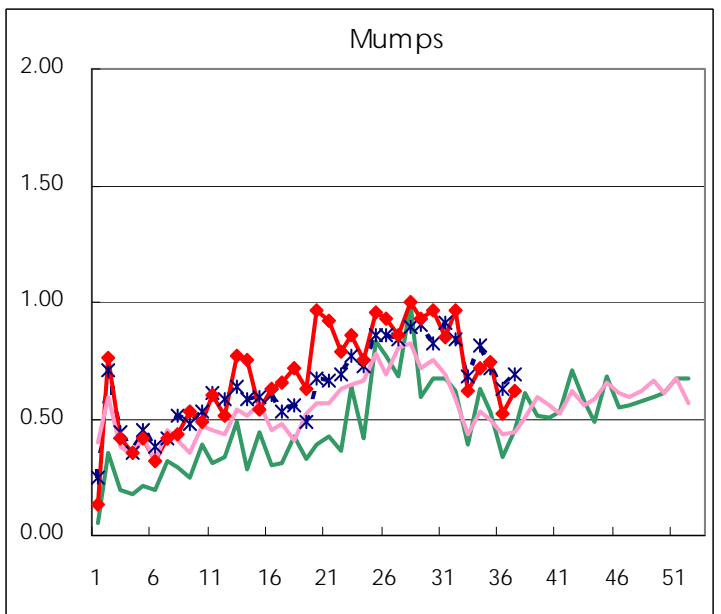
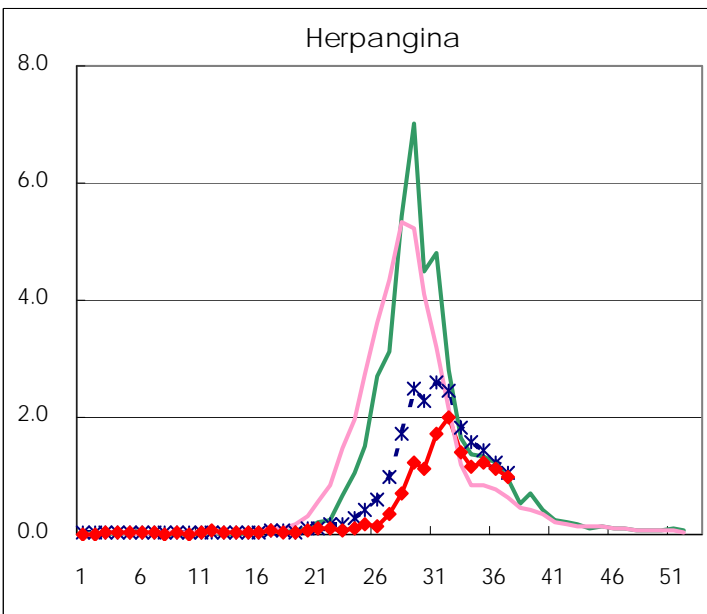
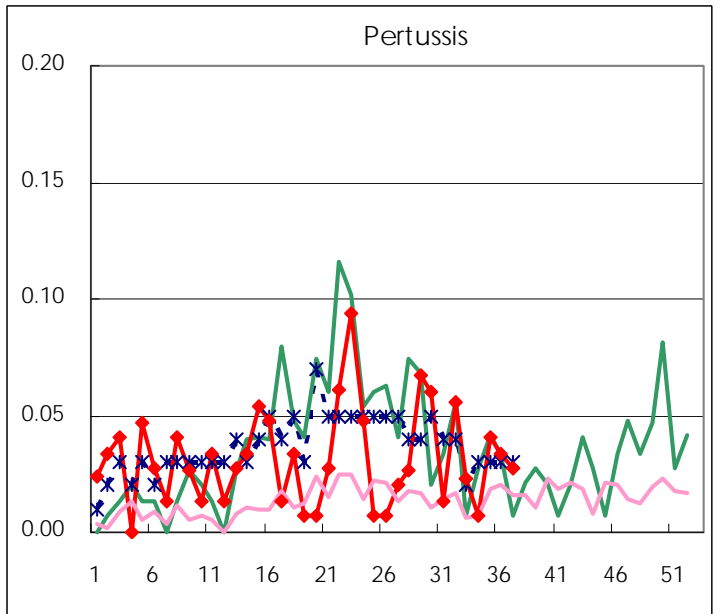
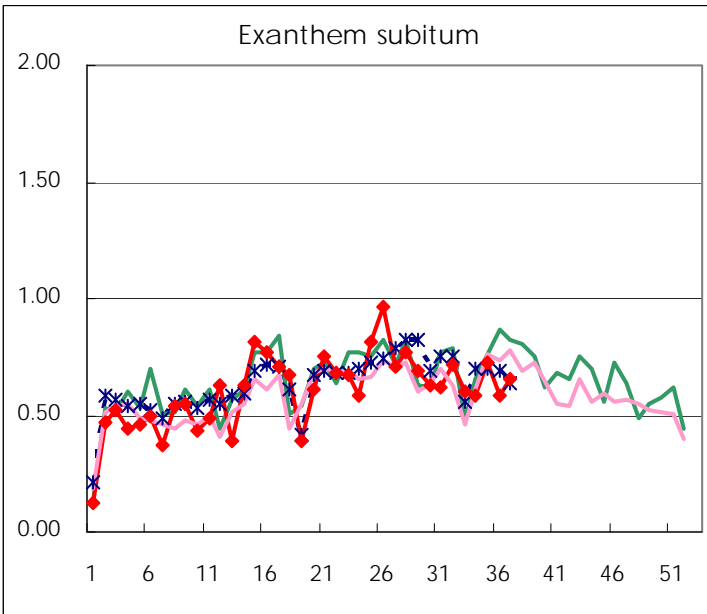
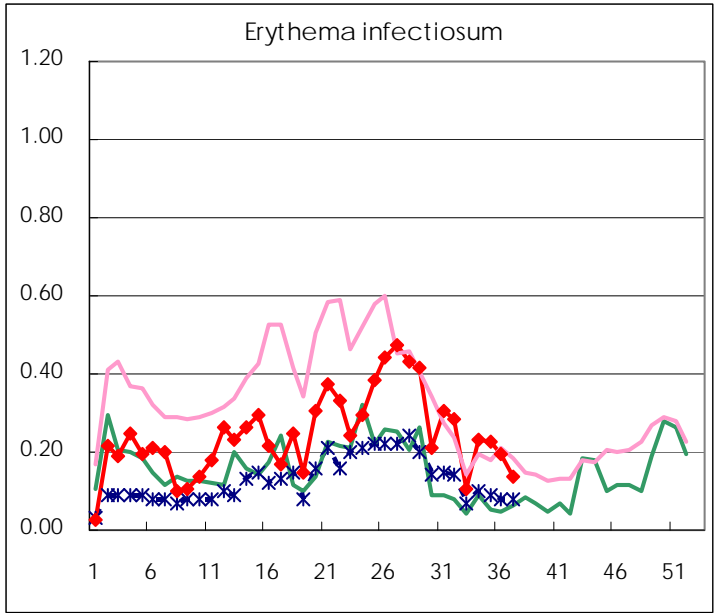
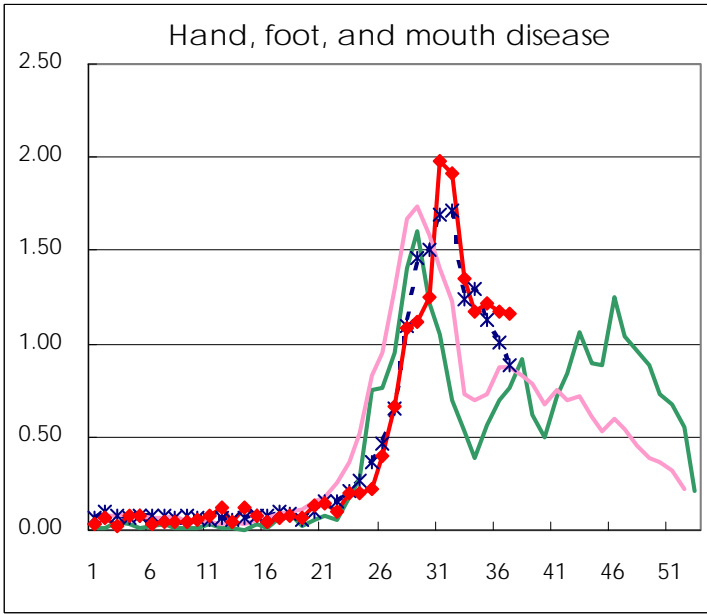
Number of patients with the diseases to be reported
by the designated clinics and hospitals

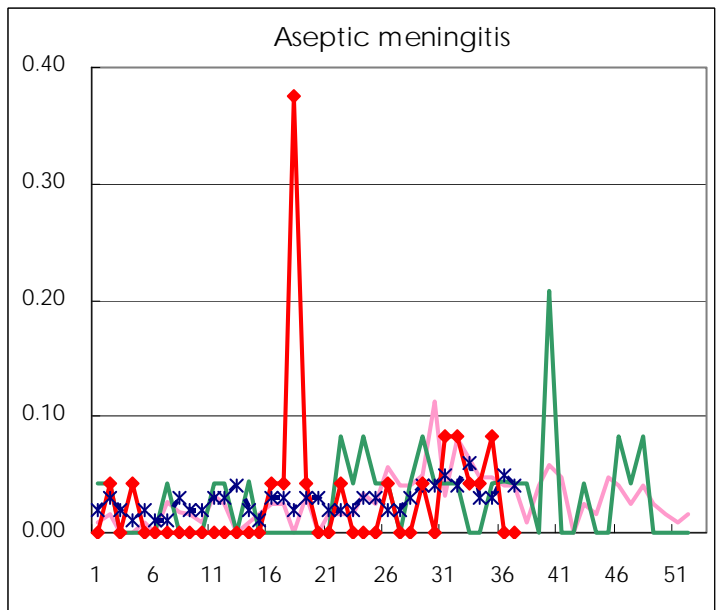
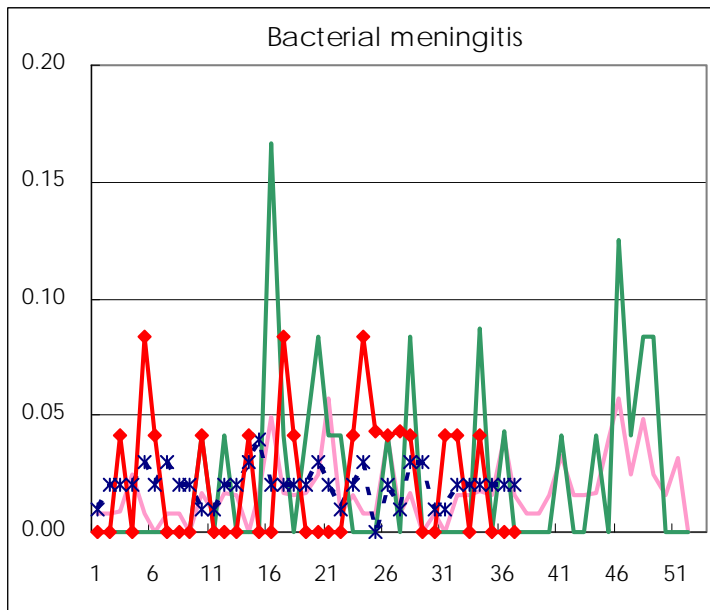
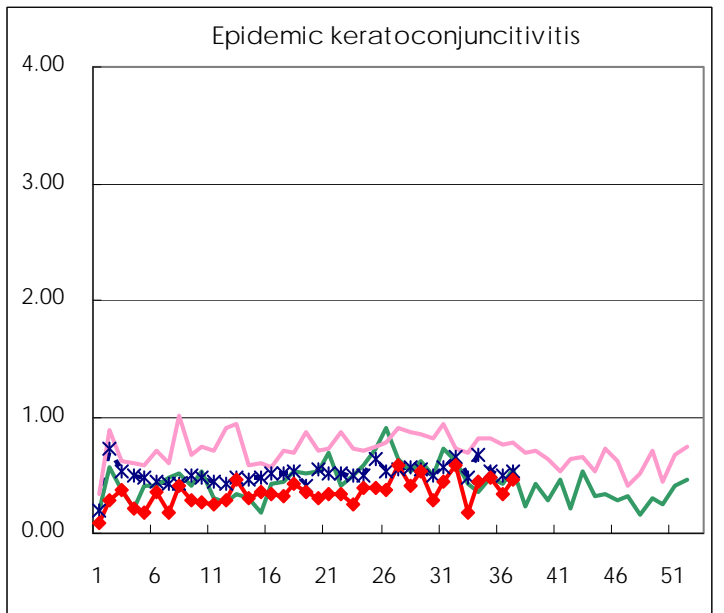
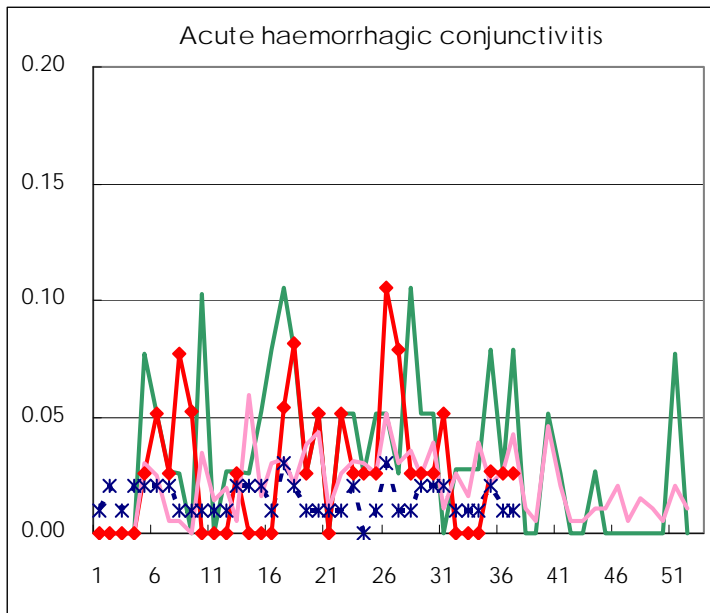
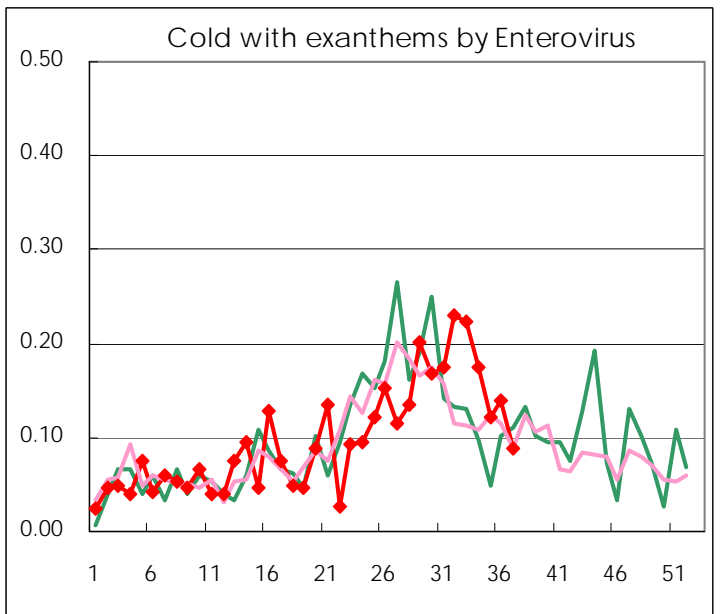
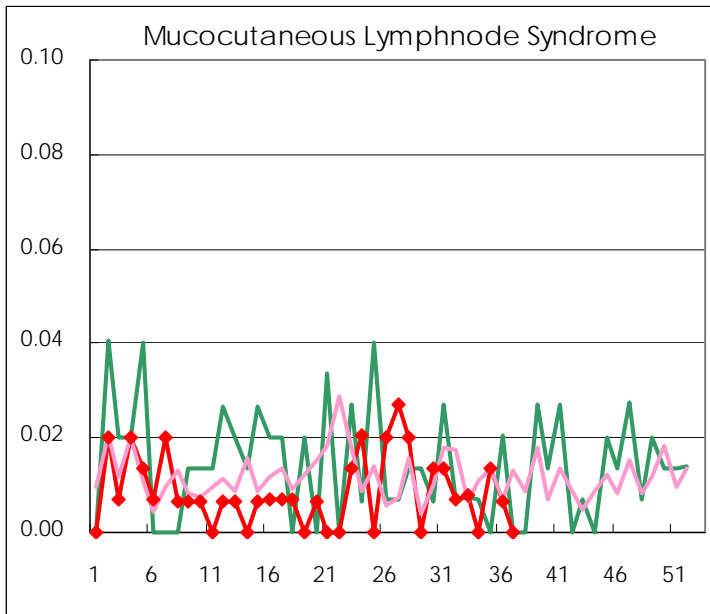
Diseases	2009				
	34th	35th	36th	37th	/sentinel
Respiratory syncytial virus infection	21	19	27	15	0.10
Pharyngoconjunctival fever	12	16	9	8	0.05
Group A streptococcal pharyngitis	73	58	59	81	0.55
Infectious gastroenteritis	392	362	422	469	3.21
Chickenpox	65	47	44	34	0.23
Hand, foot, and mouth disease	168	179	176	169	1.16
Erythema infectiosum	33	33	29	20	0.14
Exanthem subitum	84	107	88	95	0.65
Pertussis	1	6	5	4	0.03
Herpangina	166	178	169	143	0.98
Mumps	102	109	78	90	0.62
Cold with exanthems by Enterovirus	25	18	21	13	0.09
Mucocutaneous Lymphnode Syndrome		2	1		
Influenza	737	856	1,064	1,682	5.90
Acute hemorrhagic conjunctivitis		1	1	1	0.03
Epidemic keratoconjunctivitis	17	18	13	18	0.46
Bacterial meningitis	1				
Aseptic meningitis	1	2			
Mycoplasma pneumonia	6	6		9	0.38
Chlamydial pneumonia (excluding psittacosis)				1	0.04

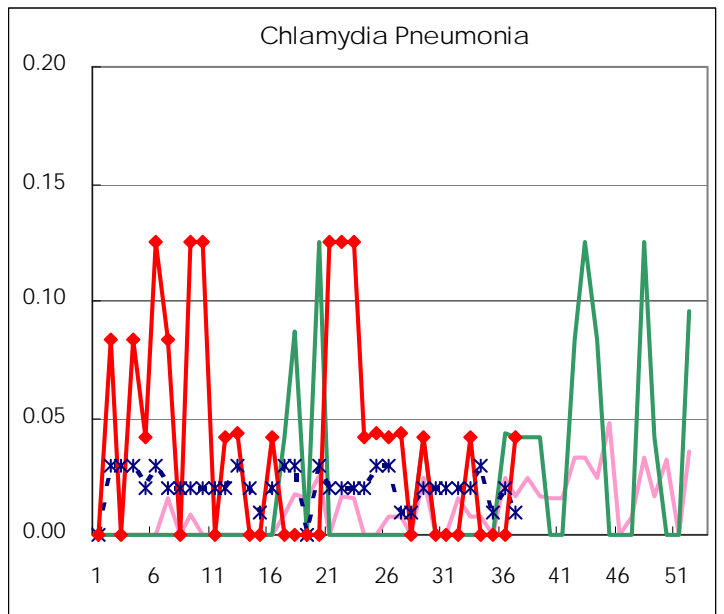
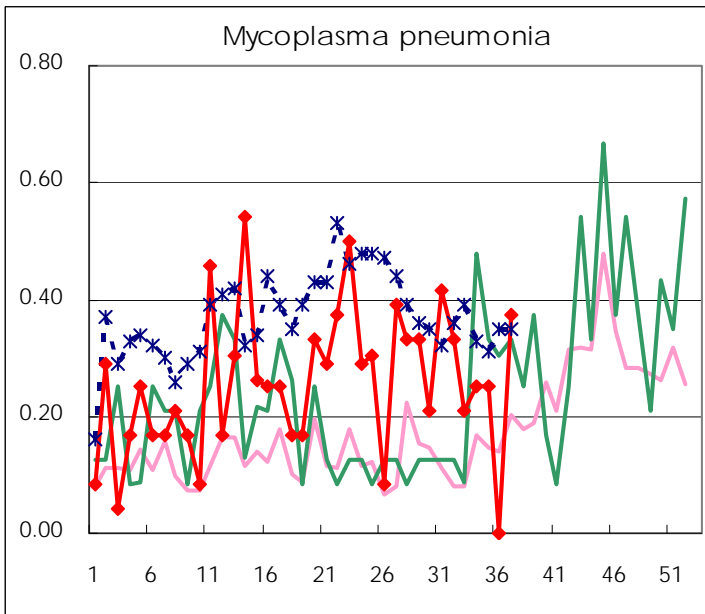
(Blank means 0.)

Disease Trend Graph (weekly reported cases per sentinel in comparison)









Number of sentinel facilities for weekly reporting

Types of sentinels	Number of sentinels	Sentinels having reported
Pediatric	150	146
Influenza	290	285
Ophthalmic	39	39
Specially-designated	24	24

Tokyo Metropolitan Government
Infectious Disease Surveillance Center