
INFECTIOUS DISEASES WEEKLY REPORT

TOKYO IDWR

Tokyo Metropolitan Infectious Disease Surveillance Center

29 September 2009 / Number 38

Surveillance System in Tokyo, Japan

The infectious diseases which all physicians must report

All physicians must report to health centers the incidence of the diseases which are shown at page one. Health centers electronically report the individual cases to Tokyo Metropolitan Infectious Disease Surveillance Center.

The infectious diseases required to be reported by the sentinels

The numbers of patients who visit the sentinel clinics or hospitals during a week are reported to health centers in Tokyo. And they electronically report the numbers to Tokyo Metropolitan Infectious Disease Surveillance Center. We have about 400 sentinel clinics and hospitals in Tokyo.

1st Week is early January and 52nd Week is end of December.

Tokyo Metropolitan Institute of Public Health
Epidemiological Information Office

TEL:81-3-3363-3213 FAX:81-3-5332-7365

e-mail:idsc@tokyo-eiken.go.jp

URL:idsc.tokyo-eiken.go.jp/

Number of patients with the diseases which all physicians must report

Category	Diseases	Tokyo				Cum 2009	Japan	
		35th	36th	37th	38th		38th	Cum 2009
I	Ebola hemorrhagic fever							
	Crimean-Congo hemorrhagic fever							
	Smallpox							
	South American hemorrhagic fever							
	Plague							
	Marburg disease							
	Lassa fever							
II	Acute poliomyelitis							
	Tuberculosis	62	56	73	65	2971	272	19102
	Diphtheria							
	Severe Acute Respiratory Syndrome(SARS)							
Avian influenza H5N1								
III	Cholera					2		8
	Shigellosis				3	33	8	126
	Enterohemorrhagic Escherichia coli infection	30	13	21	17	248	89	2,791
	Typhoid fever					10	1	23
	Paratyphoid fever	1				7		15
IV	Hepatitis E					6	1	38
	West Nile fever							
	Hepatitis A	1	3	1	1	16	1	95
	Echinococcosis					1		17
	Yellow fever							
	Psittacosis					1		15
	Omsk hemorrhagic fever							
	Relapsing fever							
	Kyasanur forest disease							
	Q fever					1		2
	Rabies							
	Coccidioidomycosis					1		2
	Monkeypox							
	Hemorrhagic fever with renal syndrome							
	Western equine encephalitis							
	Tick-borne encephalitis							
	Anthrax							
	Scrub typhus(Tsutsugamushi disease)					2		108
	Dengue fever	3	1	2	3	22	2	56
	Eastern equine encephalitis							
	Avian influenza (excluding H5N1)							
	Nipah virus infection							
	Japanese spotted fever						2	62
	Japanese encephalitis							
	Epidemic typhus							
	Hantavirus pulmonary syndrome							
	Herpes B virus infection							
	Glanders							
	Brucellosis							1
	Venezuelan equine encephalitis							
Hendra virus infection								
Botulism								
Malaria	1		1		19		45	
Tularemia								
Lyme disease					1		5	
Lyssavirus infection(excluding rabies)								
Rift valley fever								
Melioidosis								
Legionellosis	3	2		2	42	6	497	
Leptospirosis						1	12	
Rocky mountain spotted fever								

Category	Diseases	Tokyo				Japan		
		35th	36th	37th	38th	Cum 2009	38th	Cum 2009
V	Amebiasis	1	4	4	2	103	6	581
	Viral hepatitis(excluding hepatitis A and E)		1		1	28		166
	Acute encephalitis(excluding JE and WNE)	2		2		19	6	178
	Cryptosporidiosis					1		12
	Creutzfeldt-Jakob disease	1				12	2	93
	Severe invasive streptococcal infections(TSLS)					9		86
	Acquired immunodeficiency syndrome (AIDS)	8	4	11	8	361	14	1,065
	Giardiasis					18	1	55
	Meningococcal meningitis					1		9
	Congenital rubella syndrome							1
	Syphilis	9	4		5	150	8	520
	Tetanus		1			5	4	82
	Vancomycin-resistant S. aureus infection							
	Vancomycin-resistant Enterococcus infection					10		73
	Rubella	2		1		13		129
Measles			1	6	94	9	635	
Novel Flu	Novel influenza (swine-origin influenza A/H1N1) *	61	—	—	—	1187	—	**5038

* laboratory confirmed cases and suspected cases

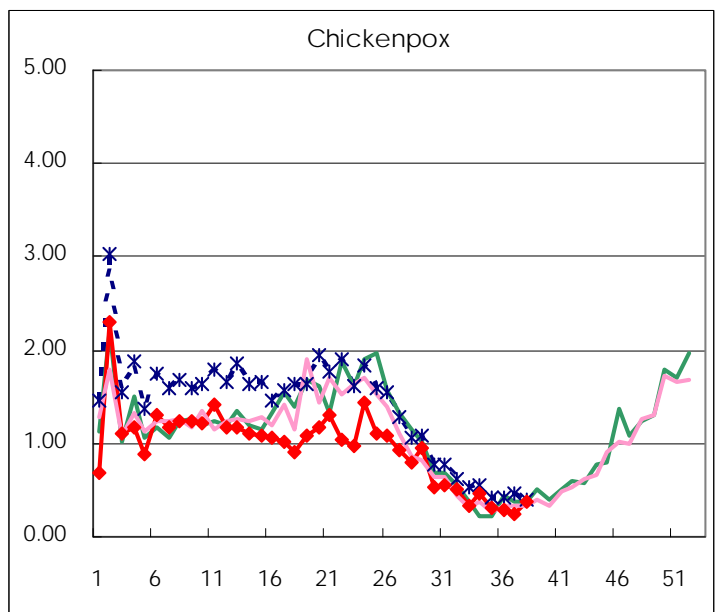
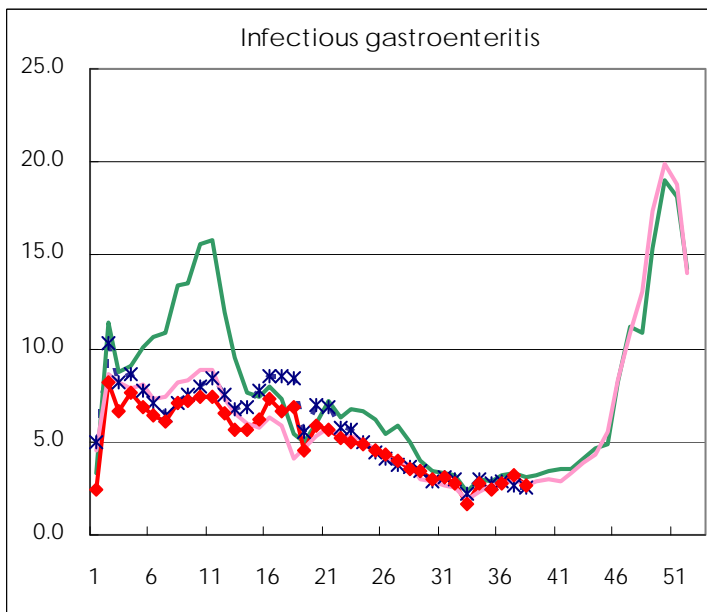
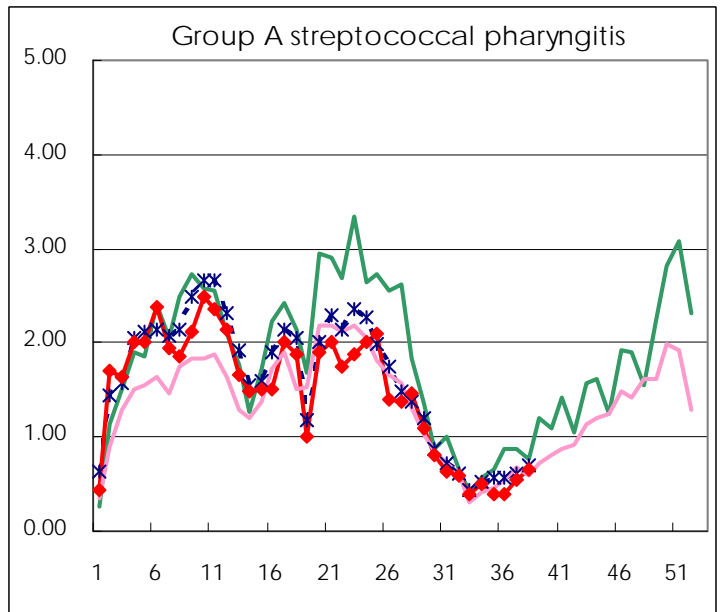
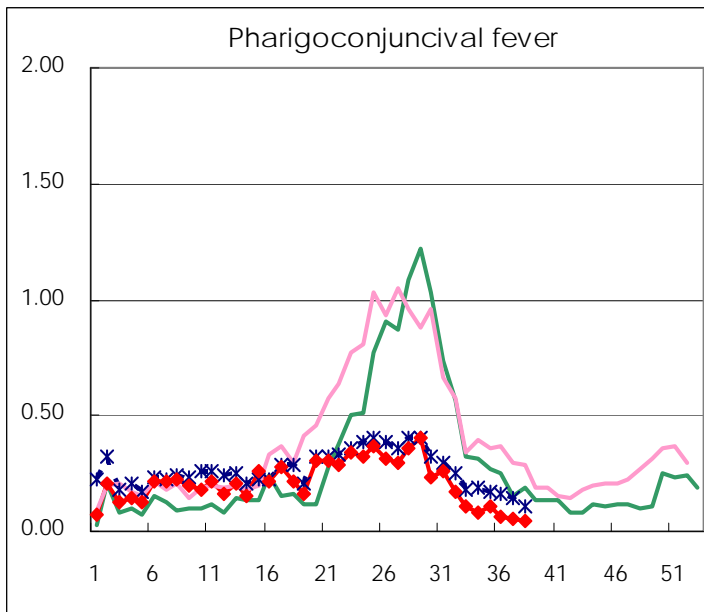
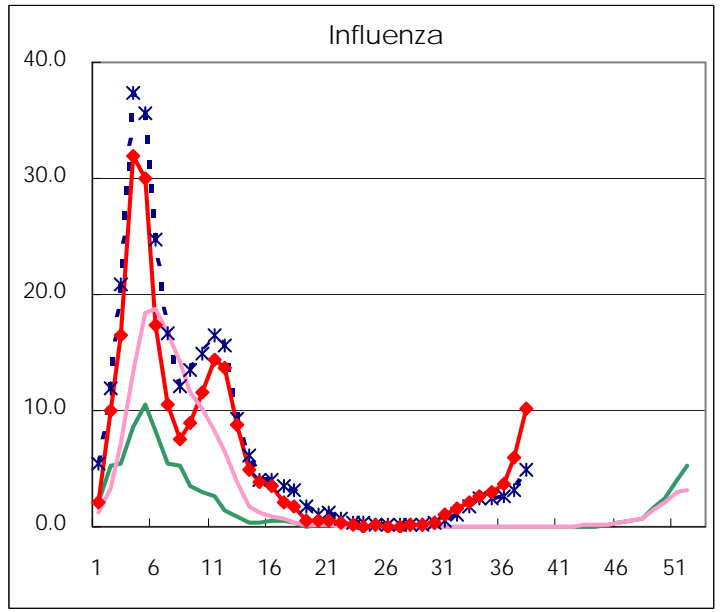
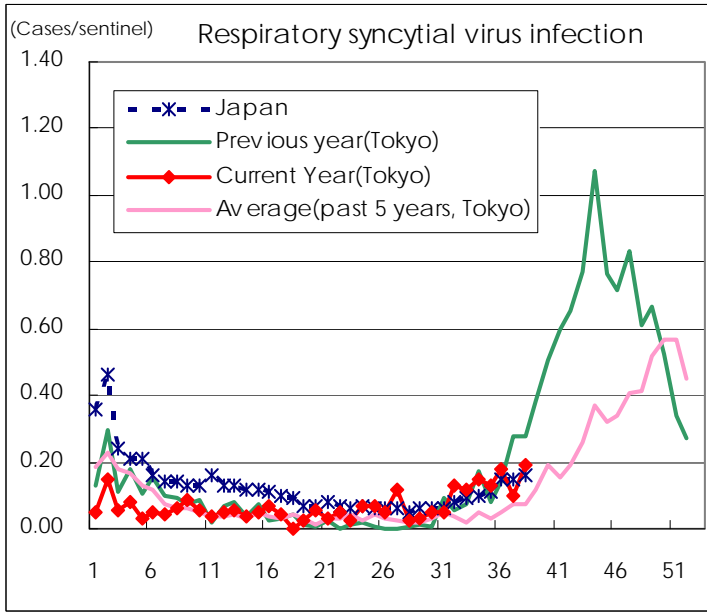
** As of July 24

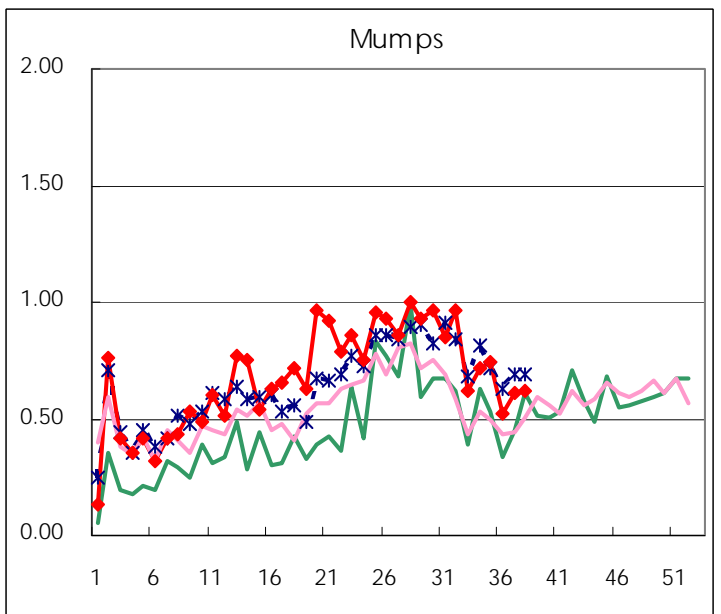
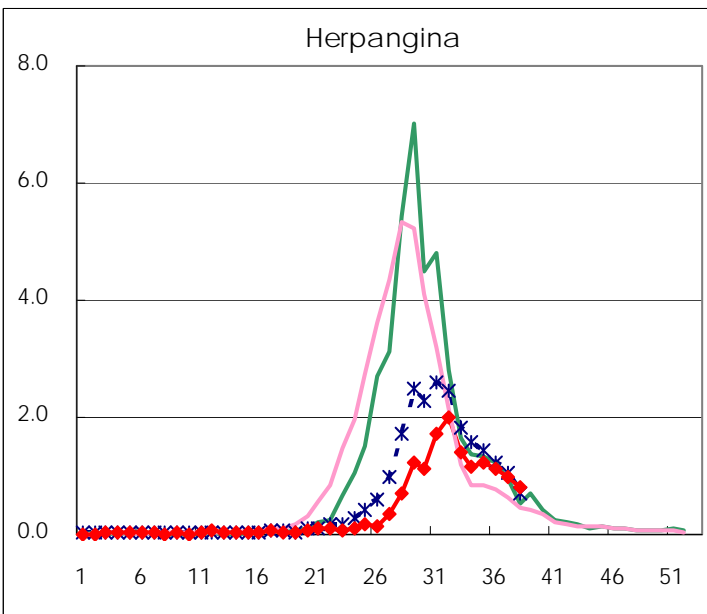
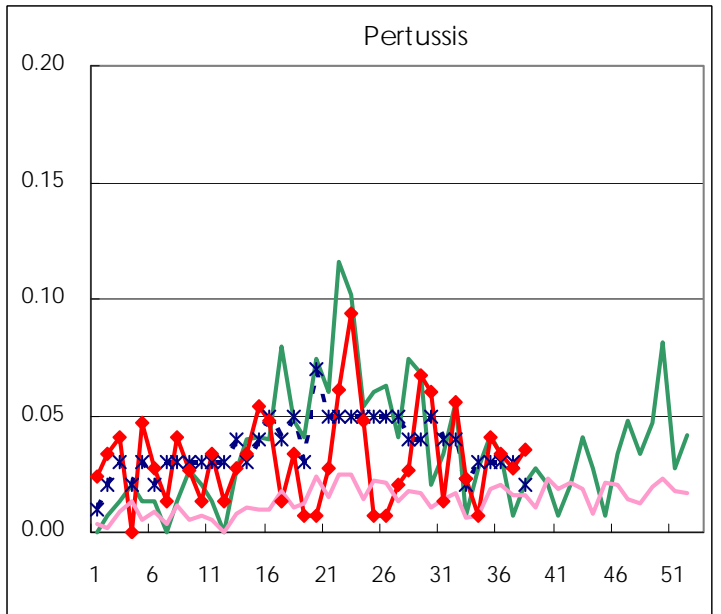
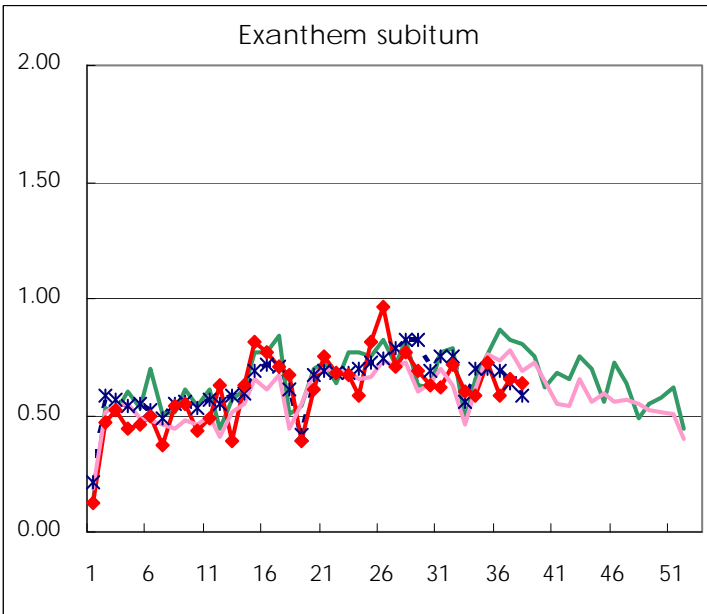
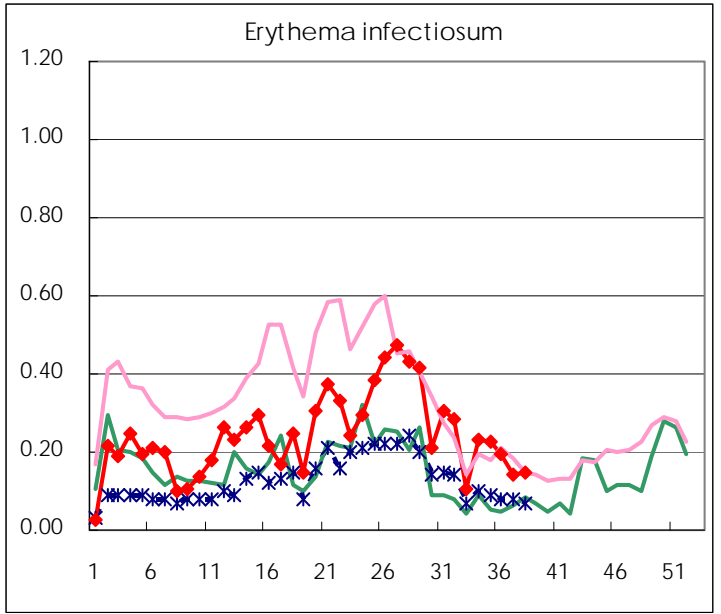
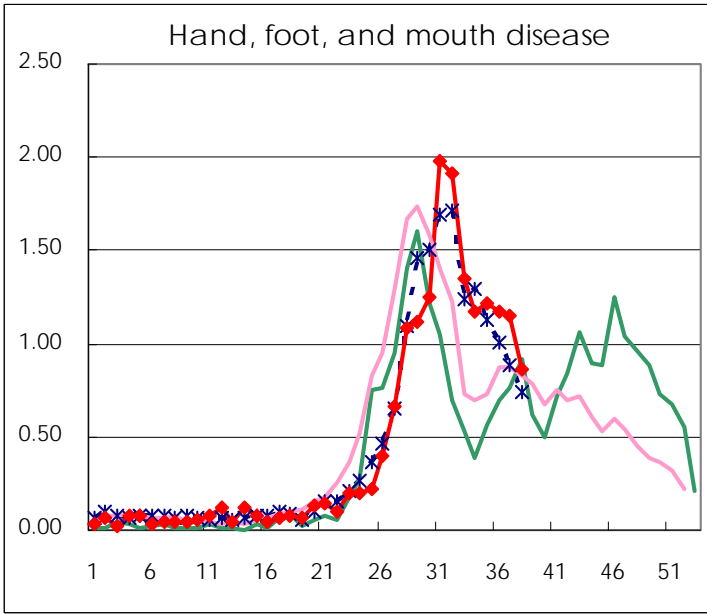
**Number of patients with the diseases to be reported
by the designated clinics and hospitals**

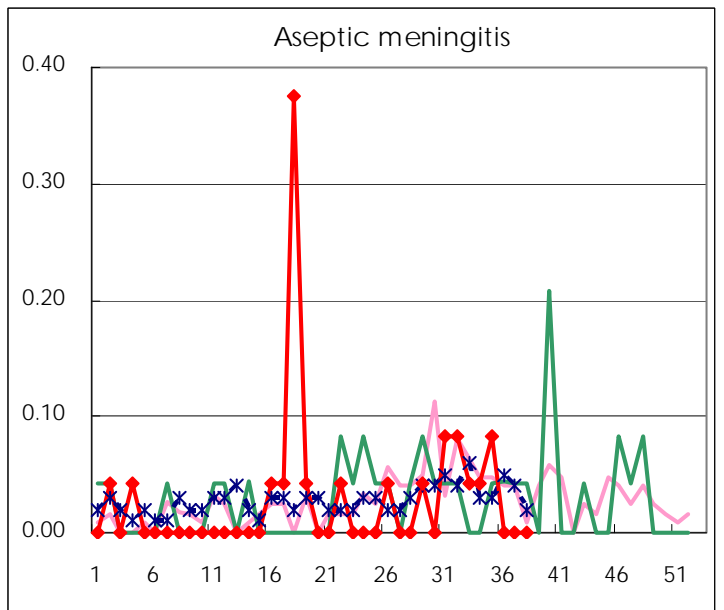
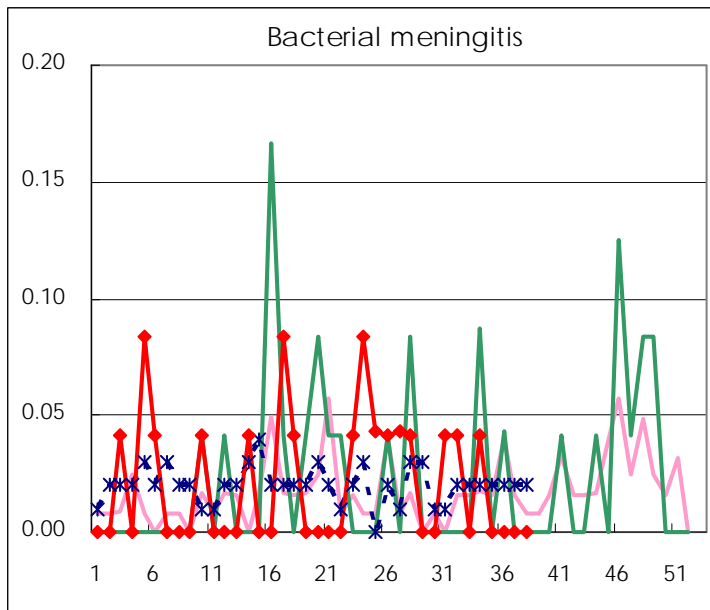
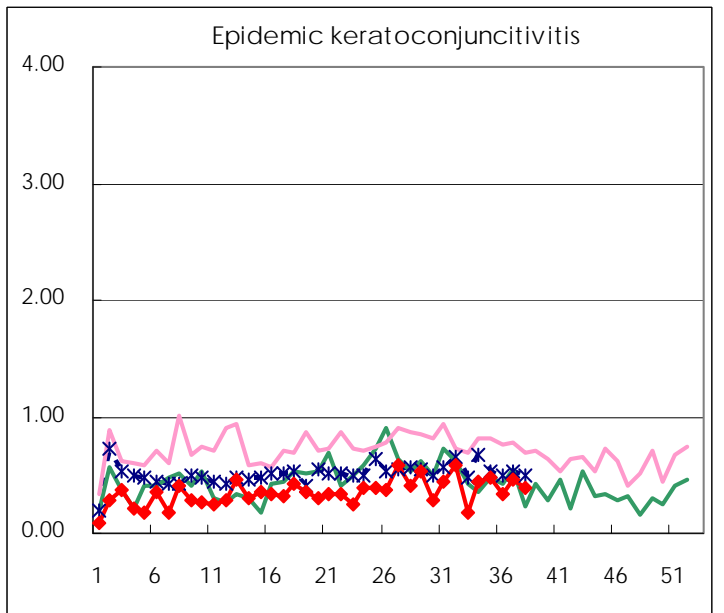
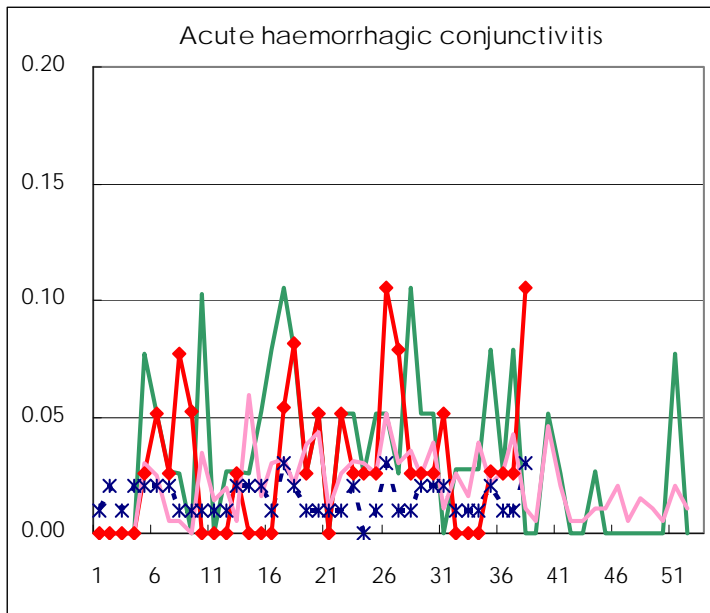
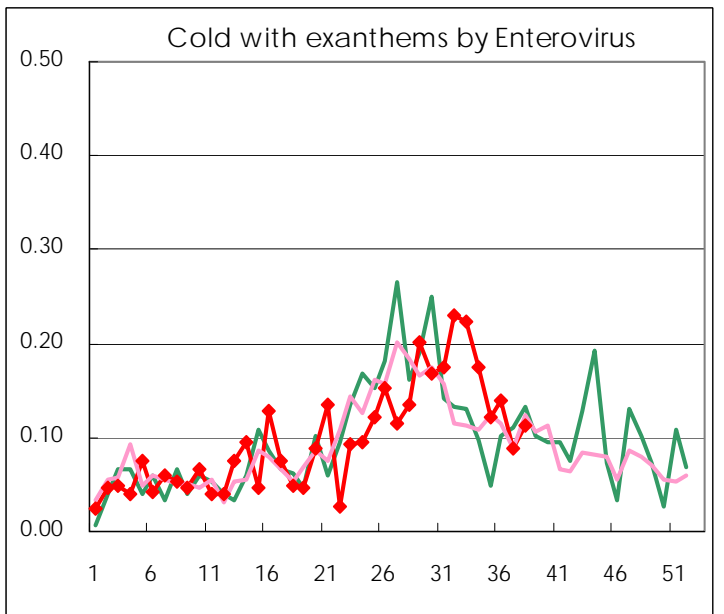
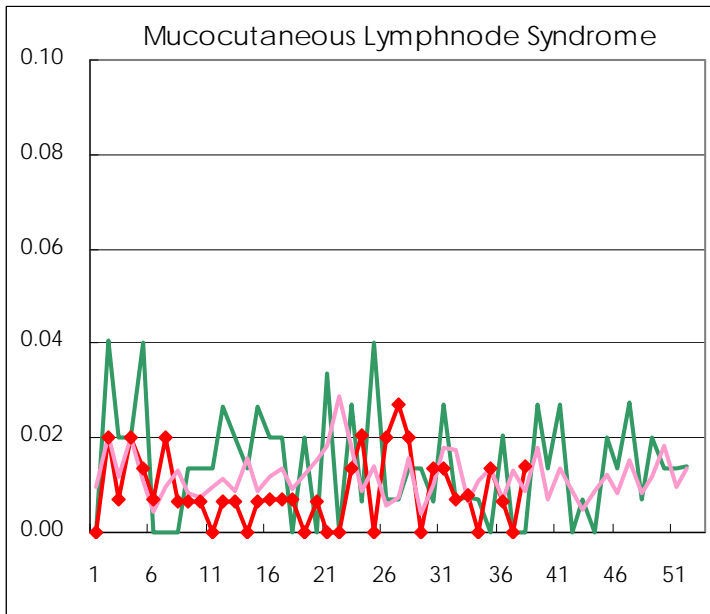
Diseases	2009				
	35th	36th	37th	38th	/sentinel
Respiratory syncytial virus infection	19	27	15	27	0.19
Pharyngoconjunctival fever	16	9	8	6	0.04
Group A streptococcal pharyngitis	58	59	82	94	0.66
Infectious gastroenteritis	362	422	469	382	2.69
Chickenpox	47	44	35	53	0.37
Hand, foot, and mouth disease	179	176	171	123	0.87
Erythema infectiosum	33	29	21	21	0.15
Exanthem subitum	107	88	97	90	0.63
Pertussis	6	5	4	5	0.04
Herpangina	178	169	143	115	0.81
Mumps	109	78	91	88	0.62
Cold with exanthems by Enterovirus	18	21	13	16	0.11
Mucocutaneous Lymphnode Syndrome	2	1		2	0.01
Influenza	856	1,064	1,694	2,818	10.21
Acute hemorrhagic conjunctivitis	1	1	1	4	0.11
Epidemic keratoconjunctivitis	18	13	18	15	0.39
Bacterial meningitis					
Aseptic meningitis	2				
Mycoplasma pneumonia	6		9	5	0.24
Chlamydial pneumonia (excluding psittacosis)			1	2	0.10

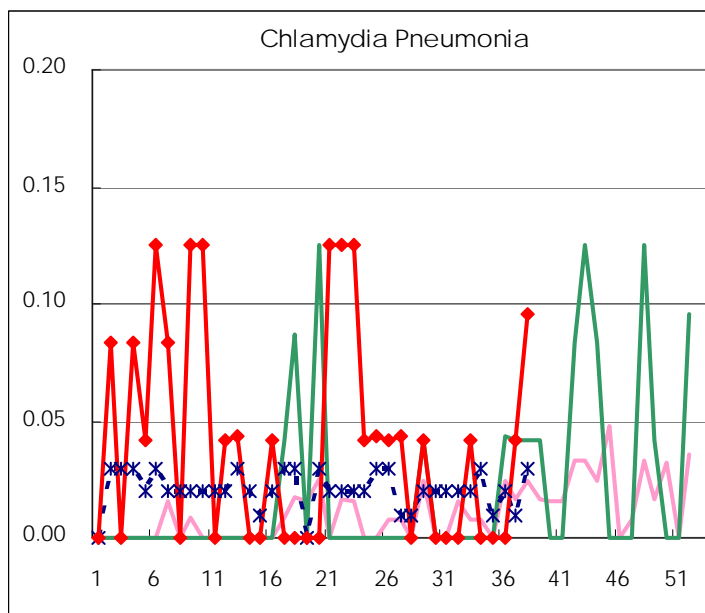
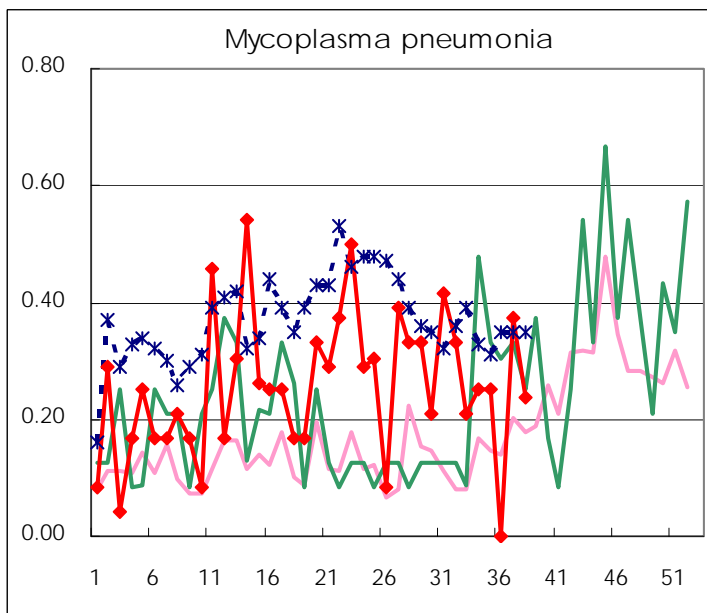
(Blank means 0.)

Disease Trend Graph (weekly reported cases per sentinel in comparison)









Number of sentinel facilities
for weekly reporting

Types of sentinels	Number of sentinels	Sentinels having reported
Pediatric	150	142
Influenza	290	276
Ophthalmic	39	38
Specially-designated	24	21

Tokyo Metropolitan Government
Infectious Disease Surveillance Center