
INFECTIOUS DISEASES WEEKLY REPORT

TOKYO IDWR

Tokyo Metropolitan Infectious Disease Surveillance Center

1 October 2009 / Number 39

Surveillance System in Tokyo, Japan

The infectious diseases which all physicians must report

All physicians must report to health centers the incidence of the diseases which are shown at page one. Health centers electronically report the individual cases to Tokyo Metropolitan Infectious Disease Surveillance Center.

The infectious diseases required to be reported by the sentinels

The numbers of patients who visit the sentinel clinics or hospitals during a week are reported to health centers in Tokyo. And they electronically report the numbers to Tokyo Metropolitan Infectious Disease Surveillance Center. We have about 400 sentinel clinics and hospitals in Tokyo.

1st Week is early January and 52nd Week is end of December.

Tokyo Metropolitan Institute of Public Health
Epidemiological Information Office

TEL:81-3-3363-3213 FAX:81-3-5332-7365
e-mail:idsc@tokyo-eiken.go.jp
URL:idsc.tokyo-eiken.go.jp/

Number of patients with the diseases which all physicians must report

Category	Diseases	Tokyo				Japan	
		36th	37th	38th	39th	Cum 2009	Cum 2009
I	Ebola hemorrhagic fever						
	Crimean-Congo hemorrhagic fever						
	Smallpox						
	South American hemorrhagic fever						
	Plague						
	Marburg disease						
	Lassa fever						
II	Acute poliomyelitis						
	Tuberculosis	59	77	74	23	3012	19382
	Diphtheria						
	Severe Acute Respiratory Syndrome(SARS)						
Avian influenza H5N1							
III	Cholera					2	8
	Shigellosis			3	1	34	127
	Enterohemorrhagic Escherichia coli infection	13	21	18	7	256	2,915
	Typhoid fever					10	23
	Paratyphoid fever				1	8	16
IV	Hepatitis E					6	38
	West Nile fever						
	Hepatitis A	3	1	1		16	96
	Echinococcosis					1	17
	Yellow fever						
	Psittacosis					1	15
	Omsk hemorrhagic fever						
	Relapsing fever						
	Kyasanur forest disease						
	Q fever					1	2
	Rabies						
	Coccidioidomycosis					1	2
	Monkeypox						
	Hemorrhagic fever with renal syndrome						
	Western equine encephalitis						
	Tick-borne encephalitis						
	Anthrax						
	Scrub typhus(Tsutsugamushi disease)					2	109
	Dengue fever	1	2	3		22	58
	Eastern equine encephalitis						
	Avian influenza (excluding H5N1)						
	Nipah virus infection						
	Japanese spotted fever						62
	Japanese encephalitis						
	Epidemic typhus						
	Hantavirus pulmonary syndrome						
	Herpes B virus infection						
	Glanders						
	Brucellosis						1
	Venezuelan equine encephalitis						
	Hendra virus infection						
Botulism							
Malaria		1		1	20	47	
Tularemia							
Lyme disease					1	5	
Lyssavirus infection(excluding rabies)							
Rift valley fever							
Melioidosis							
Legionellosis	2		2	1	43	501	
Leptospirosis						12	
Rocky mountain spotted fever							

Category	Diseases	Tokyo					Japan	
		36th	37th	38th	39th	Cum 2009	39th	Cum 2009
V	Amebiasis	4	4	2	1	104	1	586
	Viral hepatitis(excluding hepatitis A and E)	1		1		28		167
	Acute encephalitis(excluding JE and WNE)		2			19	5	187
	Cryptosporidiosis					1		12
	Creutzfeldt-Jakob disease					12		93
	Severe invasive streptococcal infections(TSLS)					9	1	87
	Acquired immunodeficiency syndrome (AIDS)	4	11	8	5	366	4	1,076
	Giardiasis				1	19		56
	Meningococcal meningitis					1		9
	Congenital rubella syndrome							1
	Syphilis	4		5	2	152	4	524
	Tetanus	1				5	2	86
	Vancomycin-resistant S. aureus infection							
	Vancomycin-resistant Enterococcus infection					10		73
	Rubella		1		1	14	1	130
Measles		1	6		94	5	641	
Novel Flu	Novel influenza (swine-origin influenza A/H1N1) *	—	—	—	—	1187	—	**5038

* laboratory confirmed cases and suspected cases

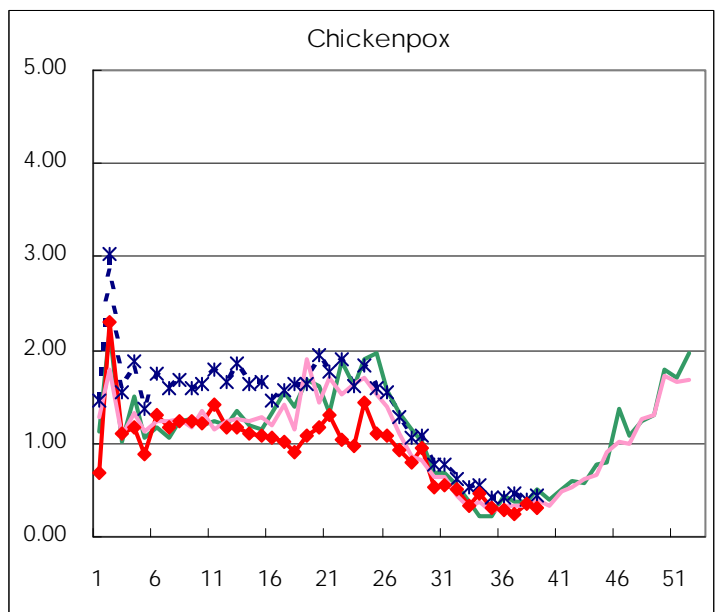
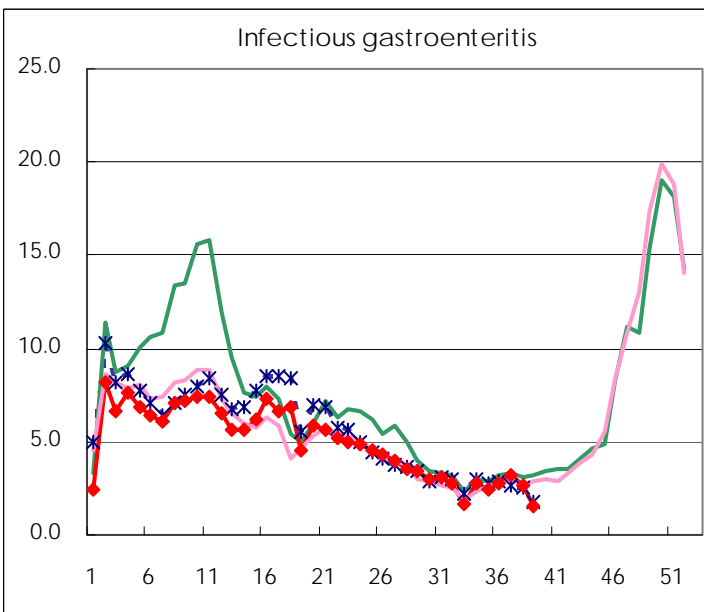
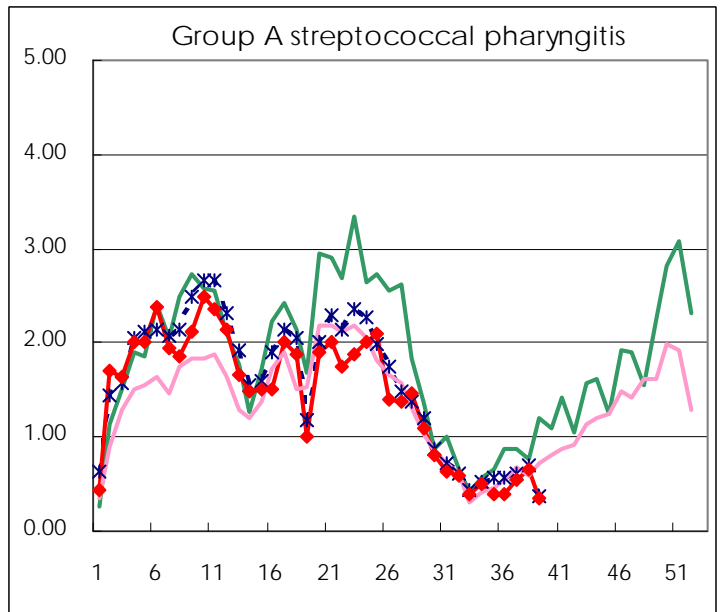
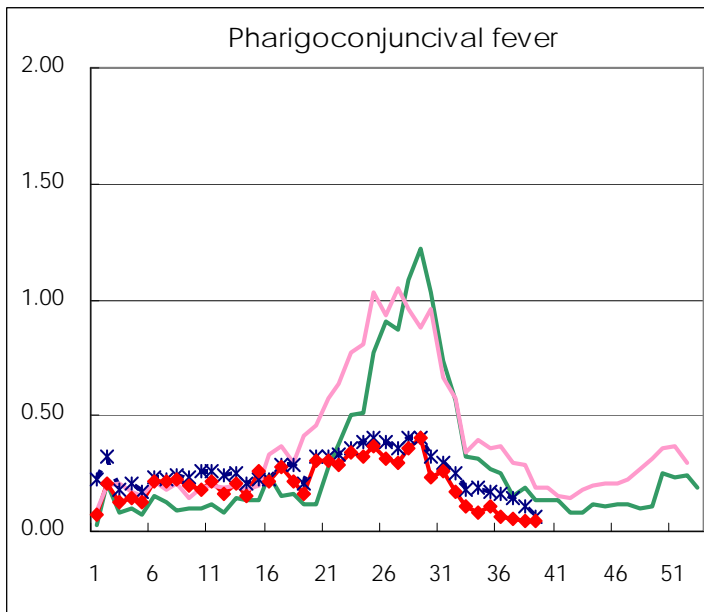
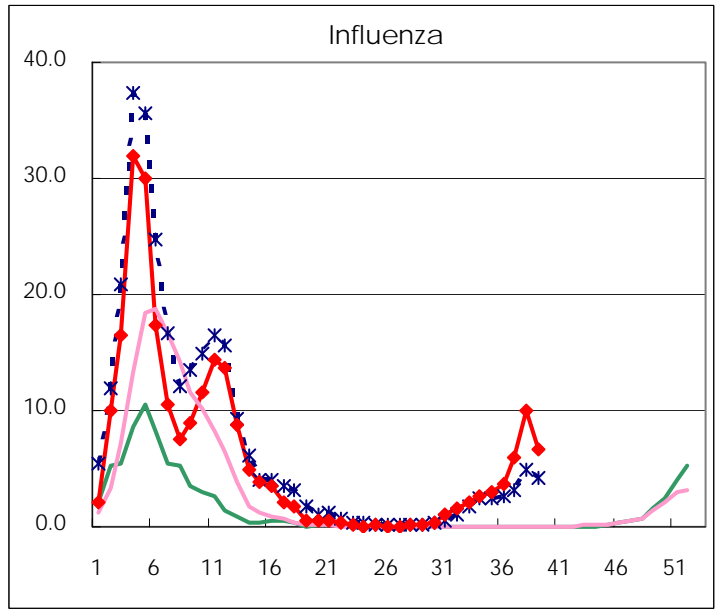
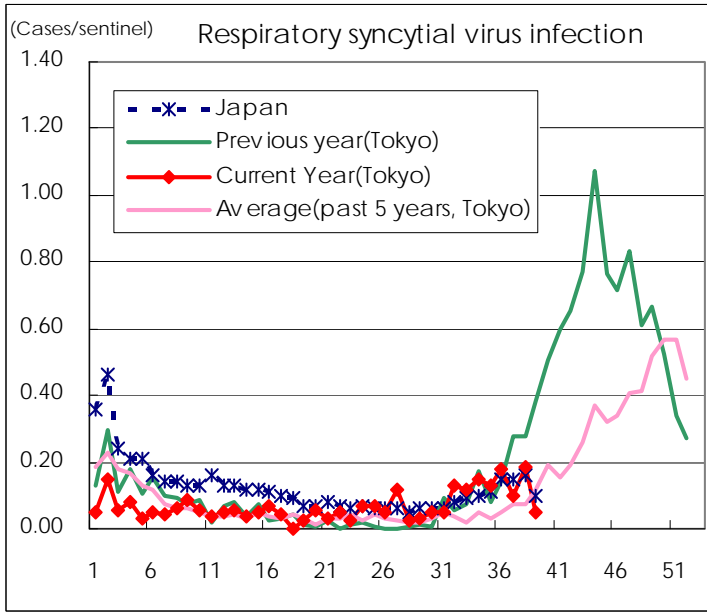
** As of July 24

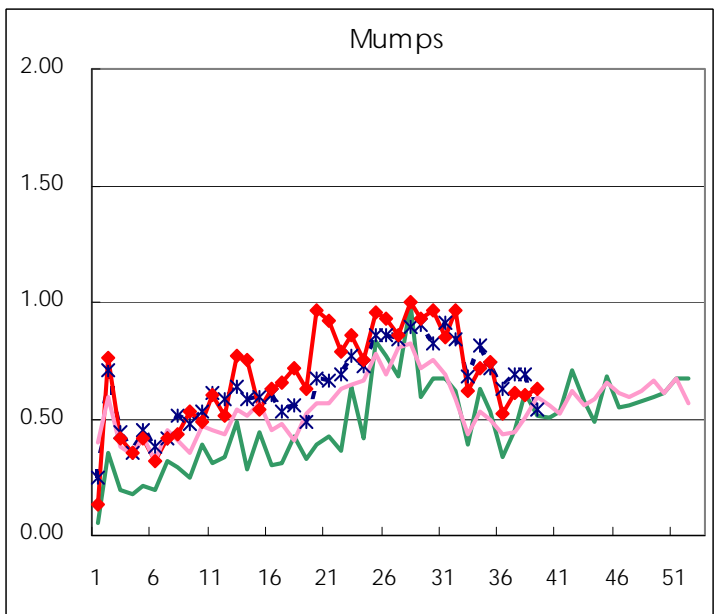
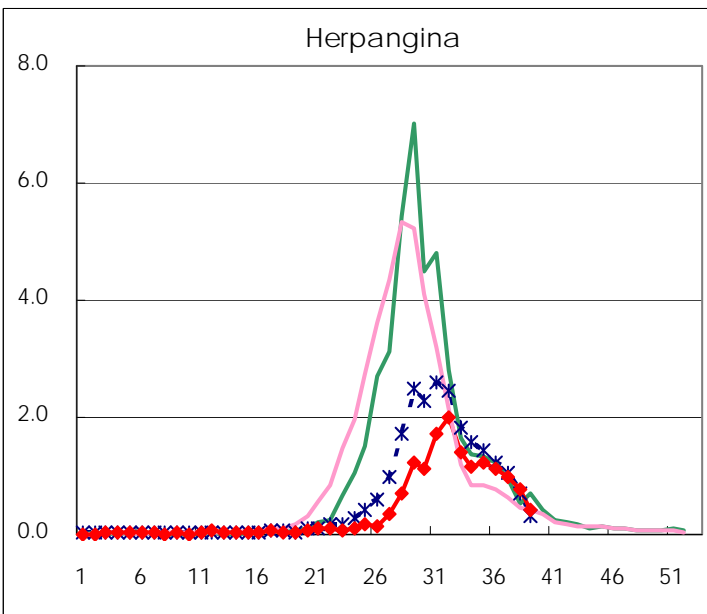
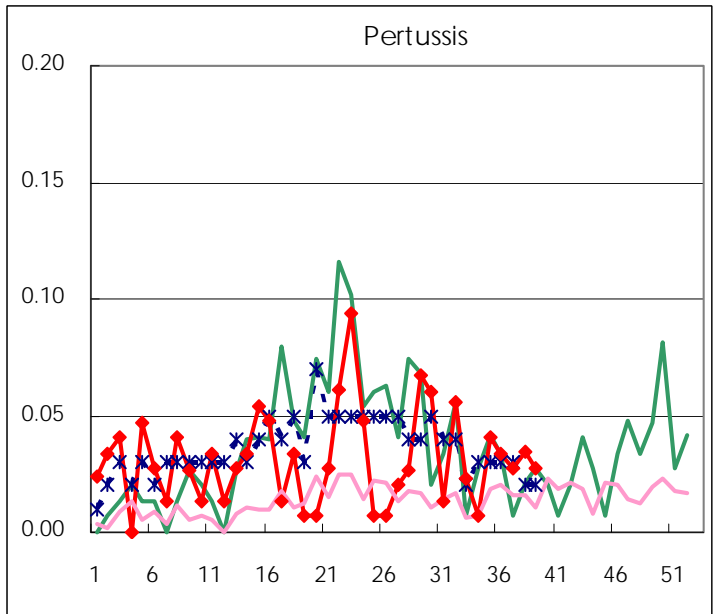
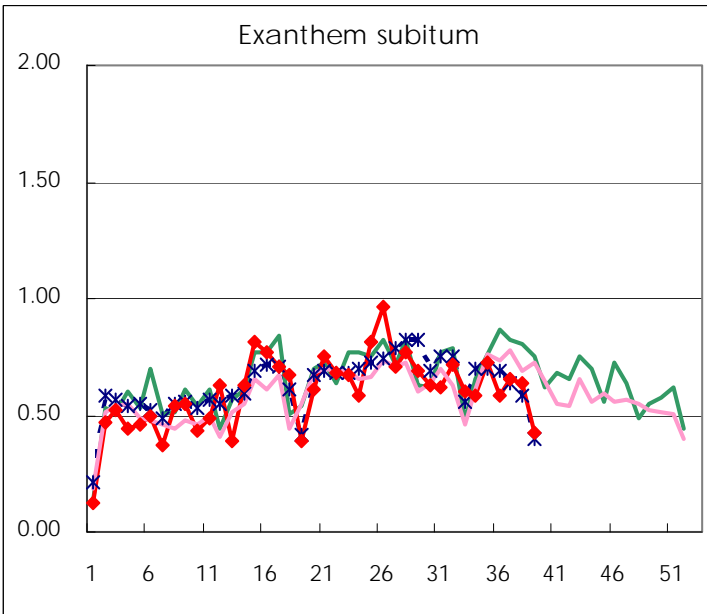
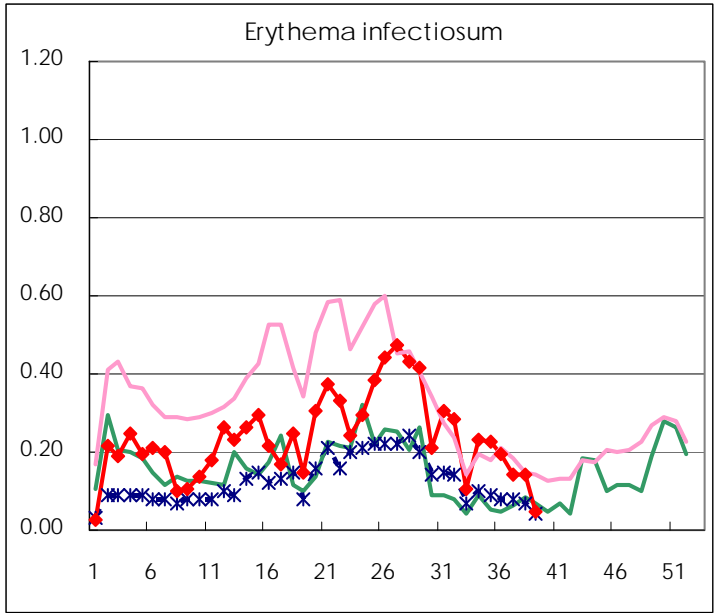
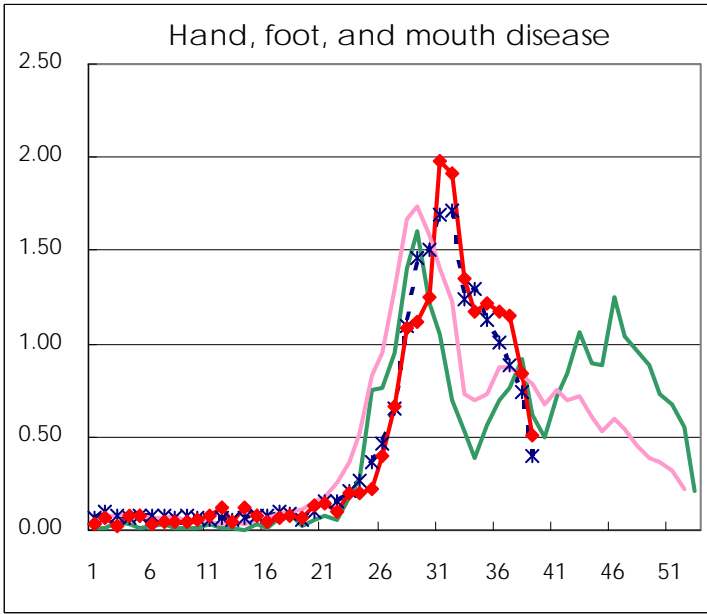
**Number of patients with the diseases to be reported
by the designated clinics and hospitals**

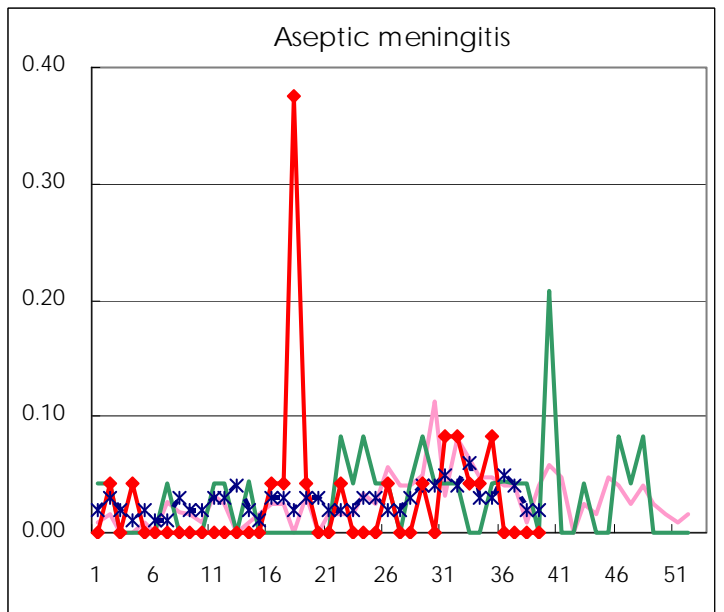
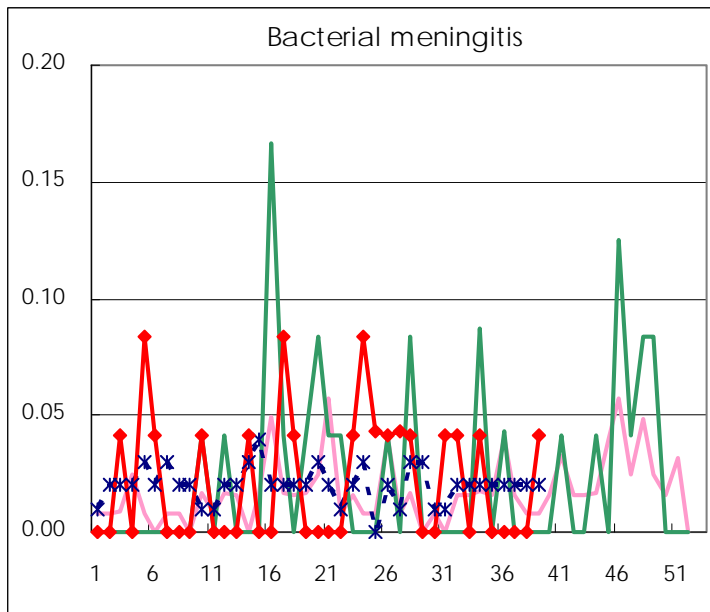
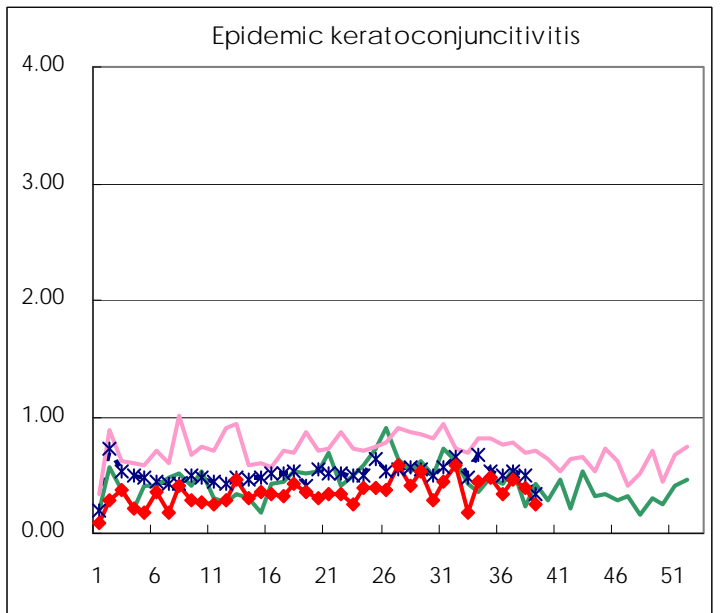
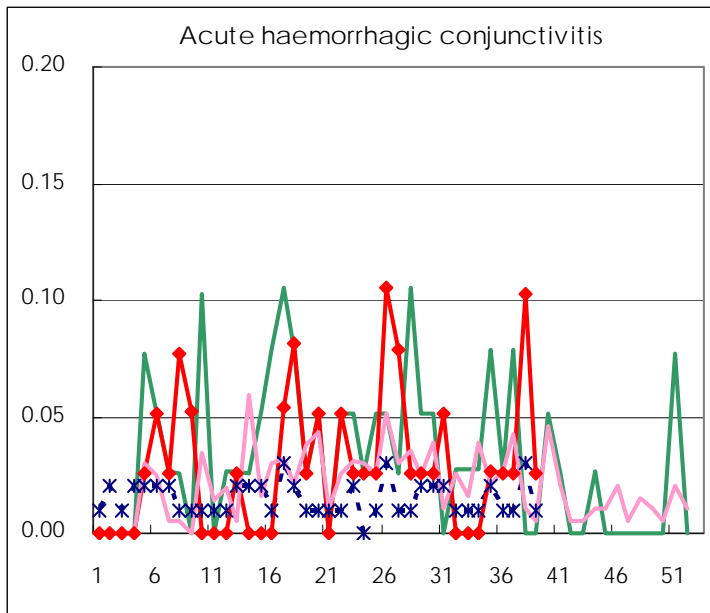
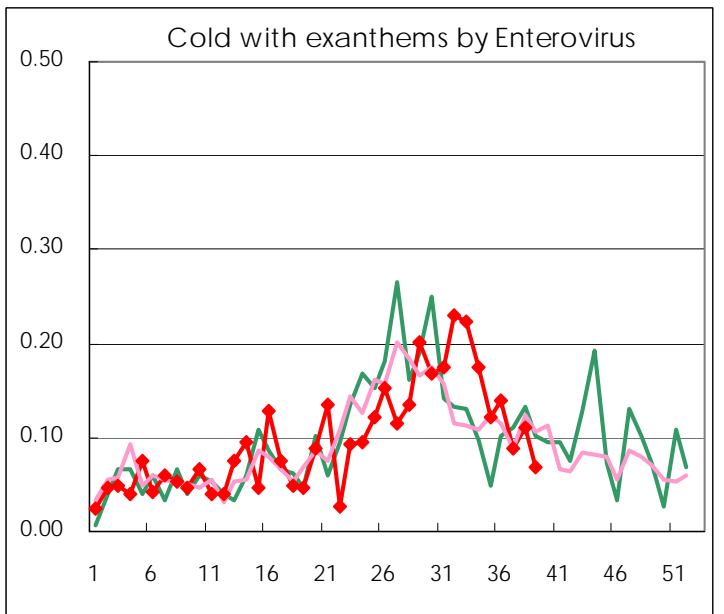
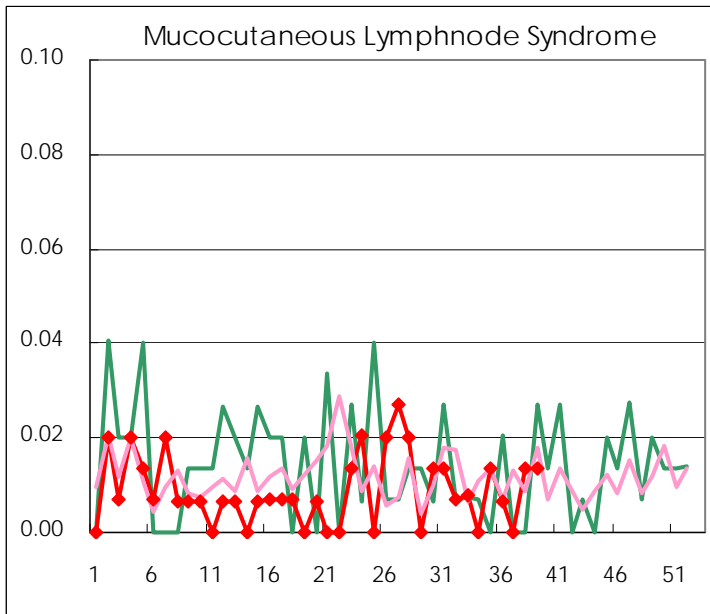
Diseases	2009				
	36th	37th	38th	39th	/sentinel
Respiratory syncytial virus infection	27	15	27	7	0.05
Pharyngoconjunctival fever	9	8	6	6	0.04
Group A streptococcal pharyngitis	59	82	97	51	0.35
Infectious gastroenteritis	422	469	385	232	1.58
Chickenpox	44	35	53	45	0.31
Hand, foot, and mouth disease	176	171	123	75	0.51
Erythema infectiosum	29	21	21	7	0.05
Exanthem subitum	88	97	93	62	0.42
Pertussis	5	4	5	4	0.03
Herpangina	169	143	115	61	0.41
Mumps	78	91	88	93	0.63
Cold with exanthems by Enterovirus	21	13	16	10	0.07
Mucocutaneous Lymphnode Syndrome	1		2	2	0.01
Influenza	1,064	1,694	2,837	1,896	6.68
Acute hemorrhagic conjunctivitis	1	1	4	1	0.03
Epidemic keratoconjunctivitis	13	18	15	10	0.26
Bacterial meningitis				1	0.04
Aseptic meningitis					
Mycoplasma pneumonia		9	7	3	0.13
Chlamydial pneumonia (excluding psittacosis)		1	2	1	0.04

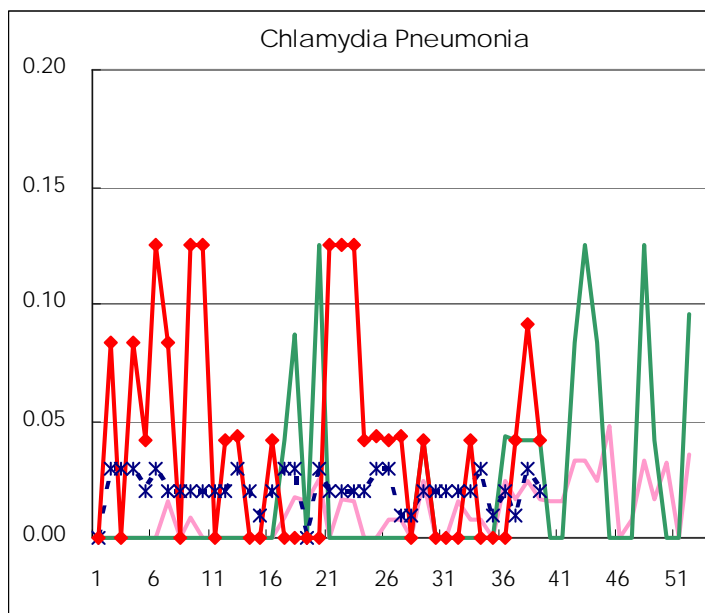
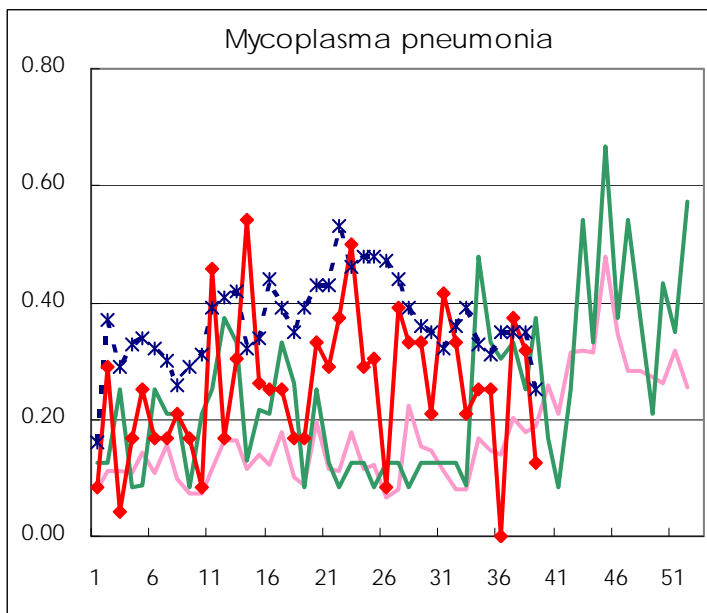
(Blank means 0.)

Disease Trend Graph (weekly reported cases per sentinel in comparison)









Number of sentinel facilities for weekly reporting

Types of sentinels	Number of sentinels	Sentinels having reported
Pediatric	150	147
Influenza	290	284
Ophthalmic	39	39
Specially-designated	24	24

Tokyo Metropolitan Government
Infectious Disease Surveillance Center