
INFECTIOUS DISEASES WEEKLY REPORT

TOKYO IDWR

Tokyo Metropolitan Infectious Disease Surveillance Center

8 October 2009 / Number 40

Surveillance System in Tokyo, Japan

The infectious diseases which all physicians must report

All physicians must report to health centers the incidence of the diseases which are shown at page one. Health centers electronically report the individual cases to Tokyo Metropolitan Infectious Disease Surveillance Center.

The infectious diseases required to be reported by the sentinels

The numbers of patients who visit the sentinel clinics or hospitals during a week are reported to health centers in Tokyo. And they electronically report the numbers to Tokyo Metropolitan Infectious Disease Surveillance Center. We have about 400 sentinel clinics and hospitals in Tokyo.

1st Week is early January and 52nd Week is end of December.

Tokyo Metropolitan Institute of Public Health
Epidemiological Information Office

TEL:81-3-3363-3213 FAX:81-3-5332-7365

e-mail:idsc@tokyo-eiken.go.jp

URL:idsc.tokyo-eiken.go.jp/

Number of patients with the diseases which all physicians must report

Category	Diseases	Tokyo				Cum 2009	Japan	
		37th	38th	39th	40th		40th	Cum 2009
I	Ebola hemorrhagic fever							
	Crimean-Congo hemorrhagic fever							
	Smallpox							
	South American hemorrhagic fever							
	Plague							
	Marburg disease							
	Lassa fever							
II	Acute poliomyelitis							
	Tuberculosis	86	79	30	46	3086	291	19941
	Diphtheria							
	Severe Acute Respiratory Syndrome(SARS)							
	Avian influenza H5N1							
III	Cholera					2		8
	Shigellosis		3	1	1	35	4	131
	Enterohemorrhagic Escherichia coli infection	21	18	7	5	261	63	3,011
	Typhoid fever					10		22
	Paratyphoid fever			1	1	9	1	17
IV	Hepatitis E					6		38
	West Nile fever							
	Hepatitis A	1	1		1	17	2	98
	Echinococcosis					1		17
	Yellow fever							
	Psittacosis					1		16
	Omsk hemorrhagic fever							
	Relapsing fever							
	Kyasanur forest disease							
	Q fever					1		2
	Rabies							
	Coccidioidomycosis					1		2
	Monkeypox							
	Hemorrhagic fever with renal syndrome							
	Western equine encephalitis							
	Tick-borne encephalitis							
	Anthrax							
	Scrub typhus(Tsutsugamushi disease)					2	2	111
	Dengue fever	2	3		1	23	1	59
	Eastern equine encephalitis							
	Avian influenza (excluding H5N1)							
	Nipah virus infection							
	Japanese spotted fever						2	65
	Japanese encephalitis							
	Epidemic typhus							
	Hantavirus pulmonary syndrome							
	Herpes B virus infection							
	Glanders							
	Brucellosis							1
	Venezuelan equine encephalitis							
Hendra virus infection								
Botulism								
Malaria	1		1	1	21		48	
Tularemia								
Lyme disease					1		5	
Lyssavirus infection(excluding rabies)								
Rift valley fever								
Melioidosis								
Legionellosis		2	1		43	3	511	
Leptospirosis							12	
Rocky mountain spotted fever								

Category	Diseases	Tokyo					Japan	
		37th	38th	39th	40th	Cum 2009	40th	Cum 2009
V	Amebiasis	4	2	1	5	109	11	605
	Viral hepatitis(excluding hepatitis A and E)		1			28	4	171
	Acute encephalitis(excluding JE and WNE)	2			2	21	9	203
	Cryptosporidiosis					1		12
	Creutzfeldt-Jakob disease					12	2	99
	Severe invasive streptococcal infections(TSLS)					9		87
	Acquired immunodeficiency syndrome (AIDS)	11	8	5	5	371	13	1,105
	Giardiasis			1		19		59
	Meningococcal meningitis					1		9
	Congenital rubella syndrome							1
	Syphilis		5	2	3	155	5	541
	Tetanus				1	6	3	92
	Vancomycin-resistant S. aureus infection							
	Vancomycin-resistant Enterococcus infection				1	11	2	76
	Rubella	1		1	1	15	1	133
Measles	1	6		4	98	11	656	
Novel Flu	Novel influenza (swine-origin influenza A/H1N1) *	—	—	—	—	1187	—	**5038

* laboratory confirmed cases and suspected cases

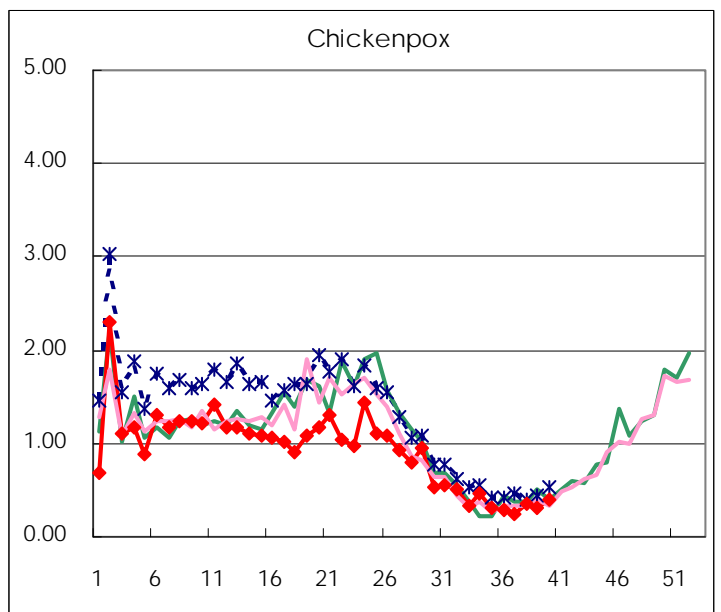
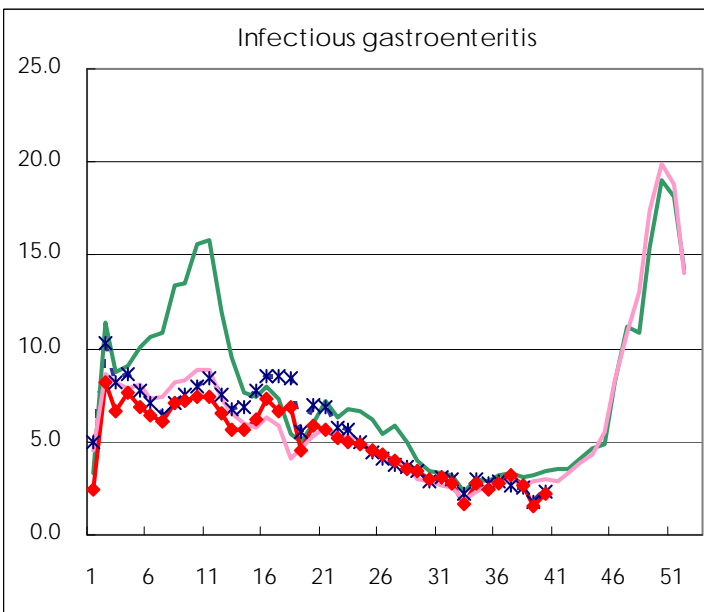
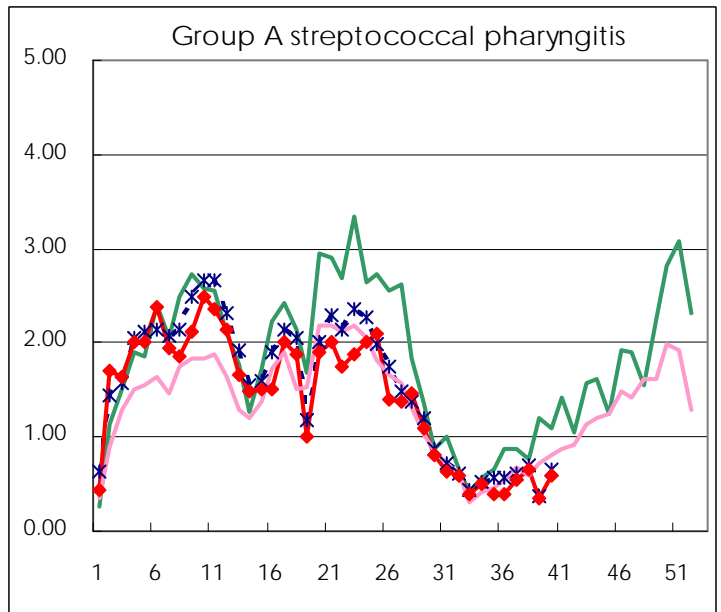
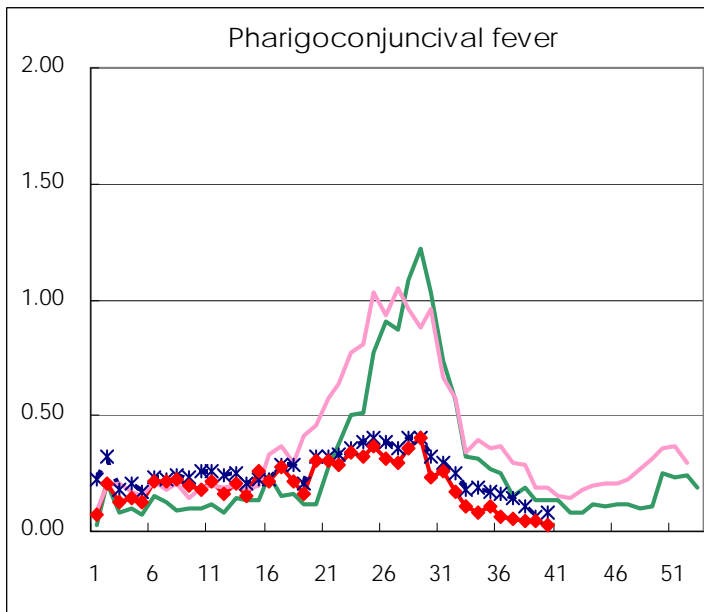
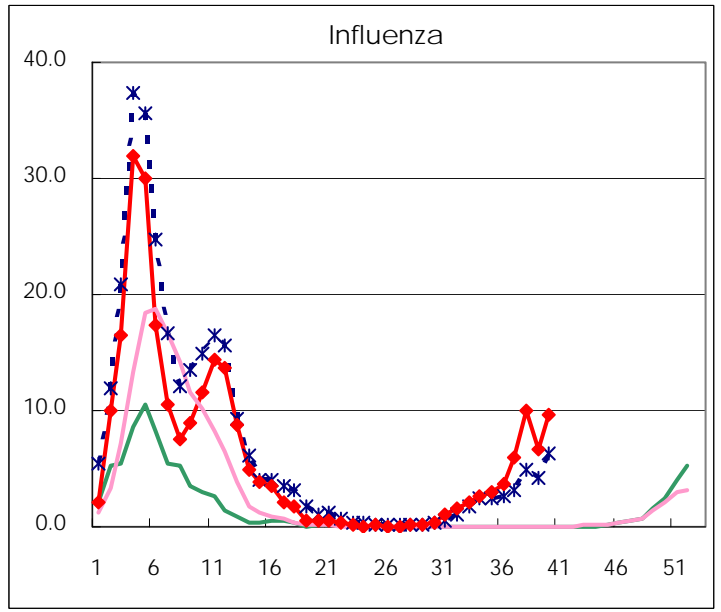
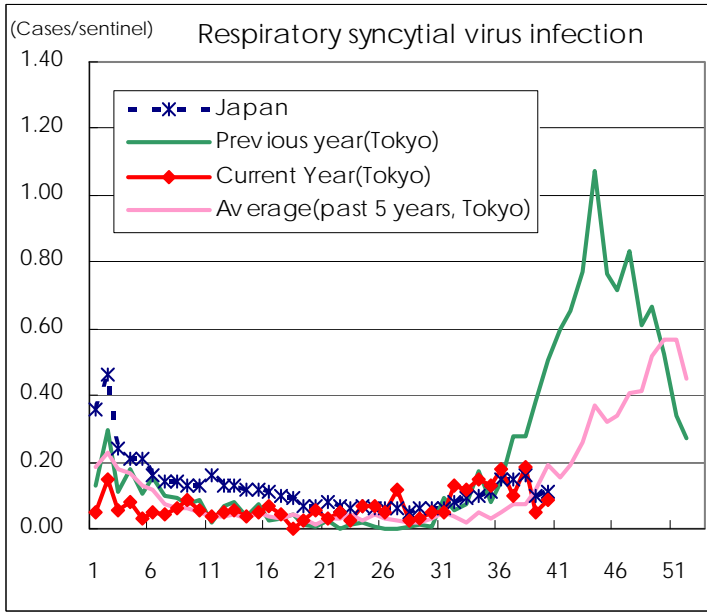
** As of July 24

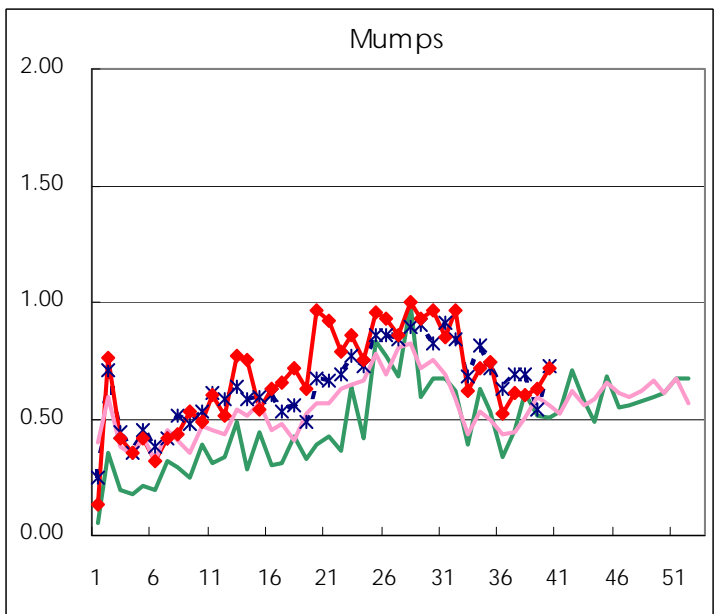
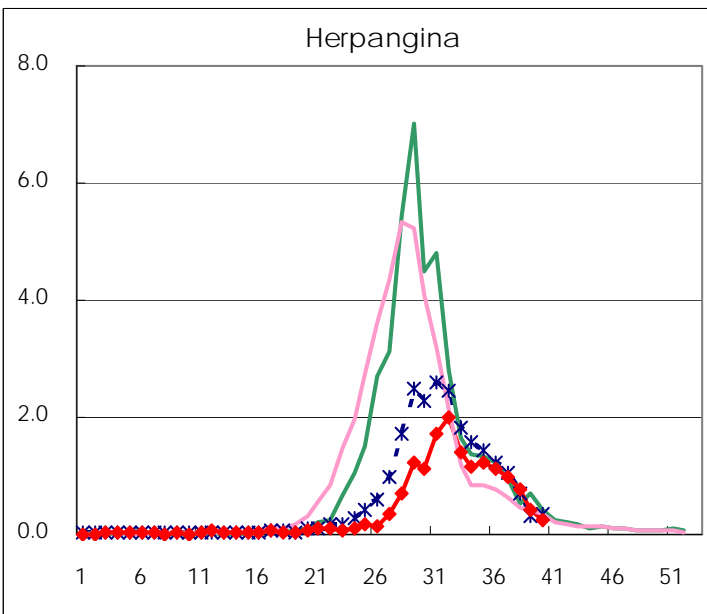
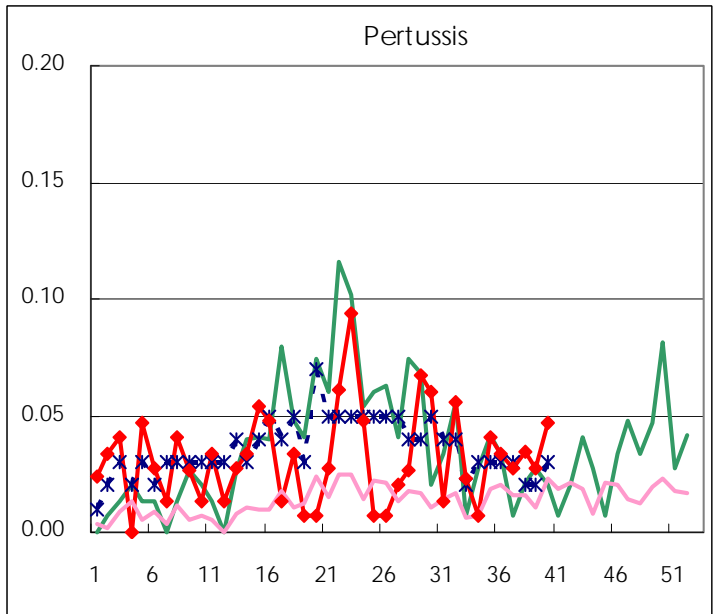
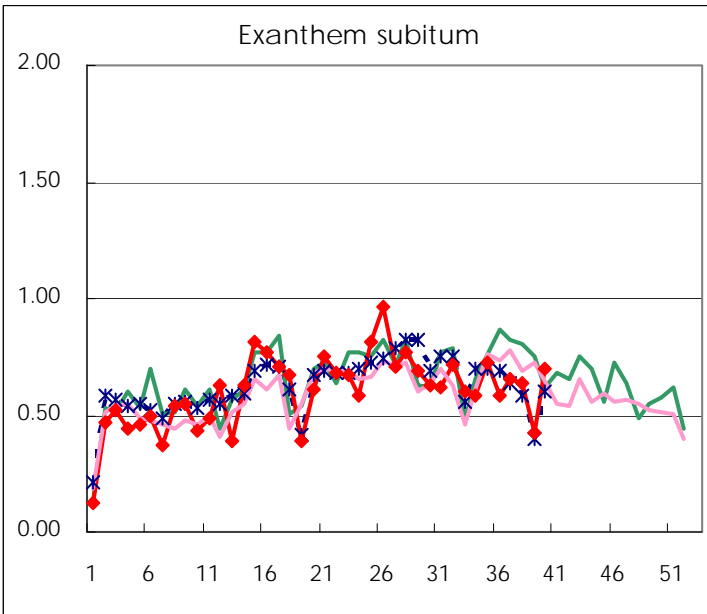
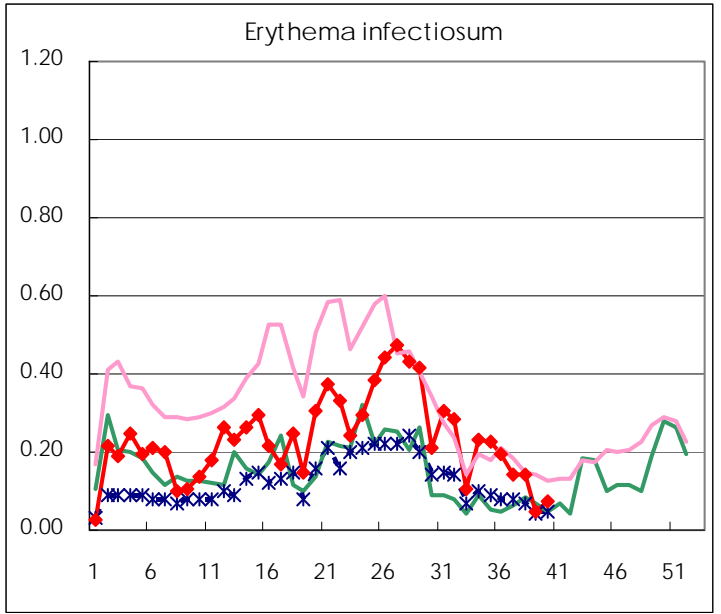
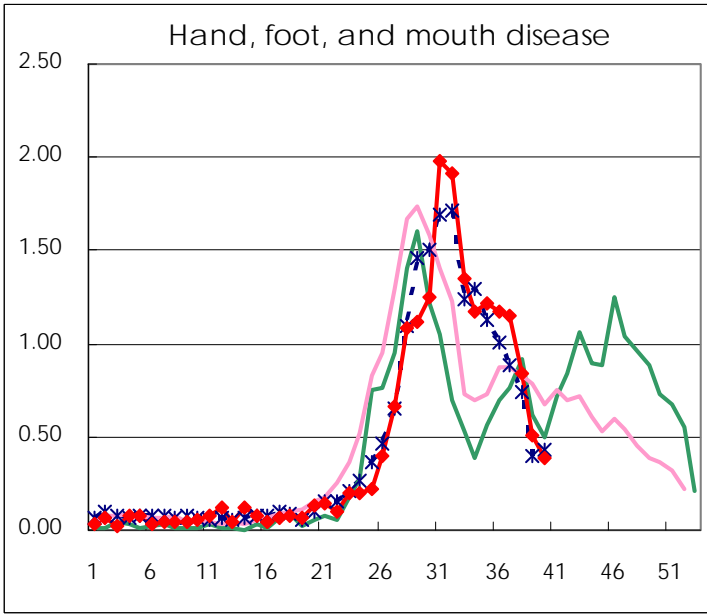
Number of patients with the diseases to be reported
by the designated clinics and hospitals

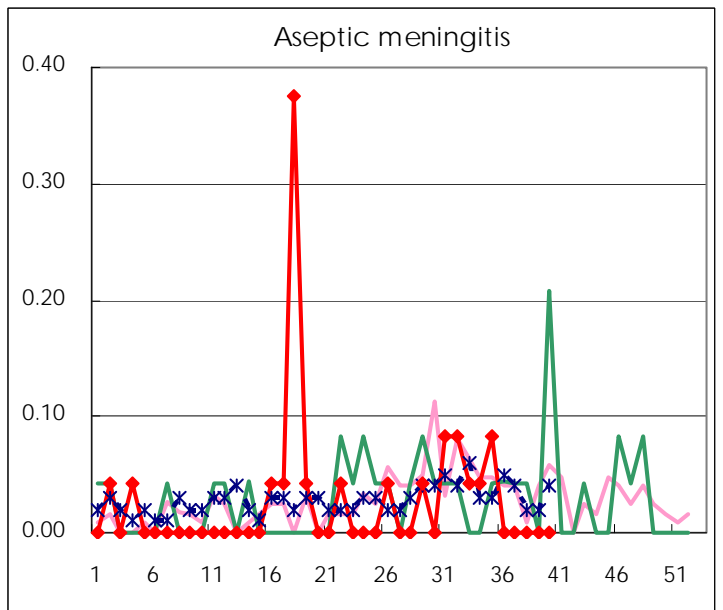
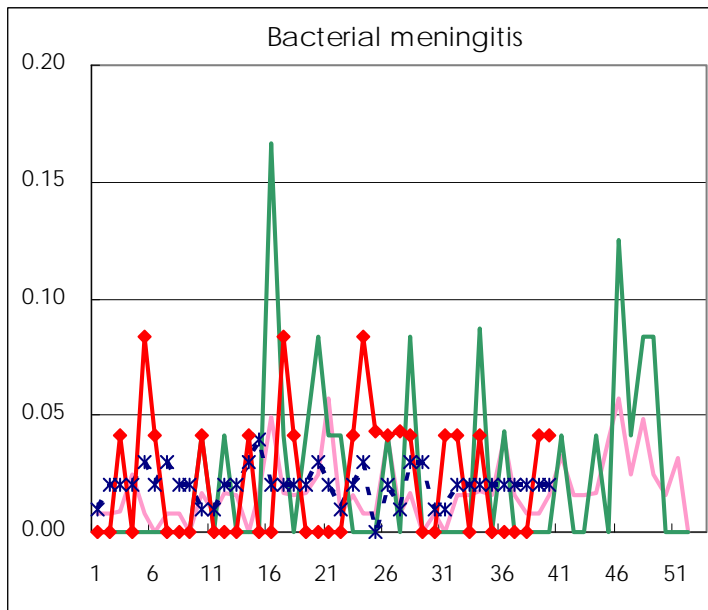
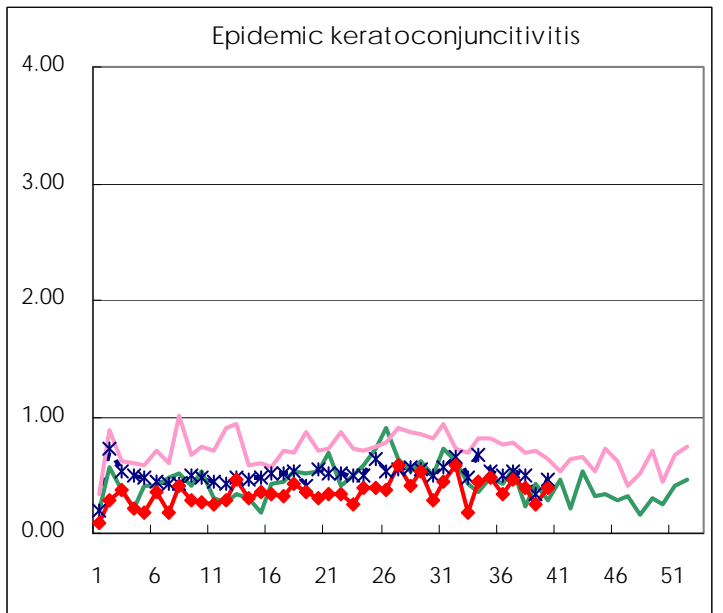
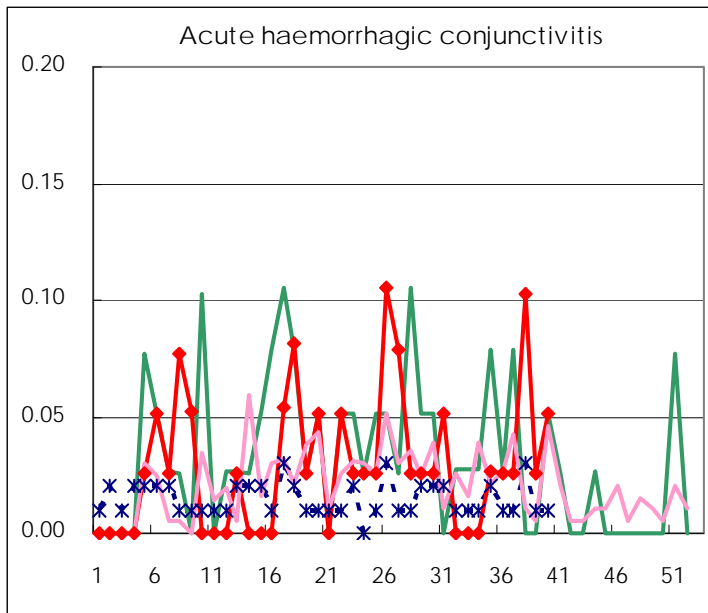
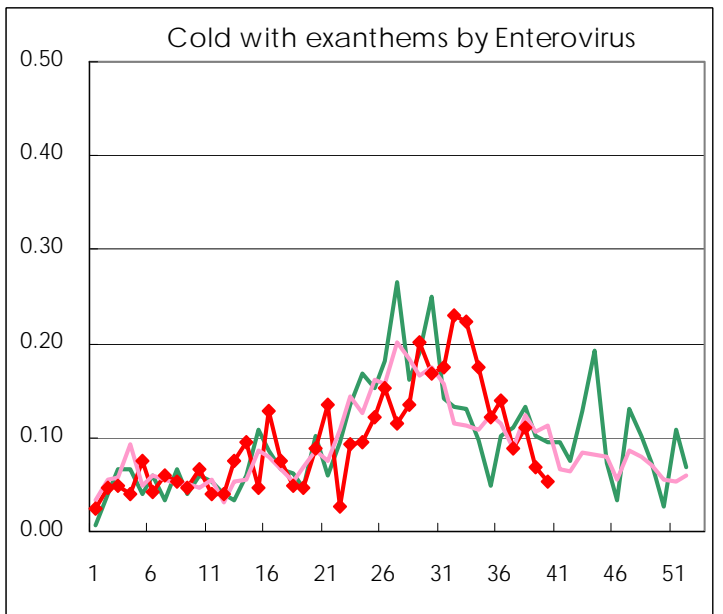
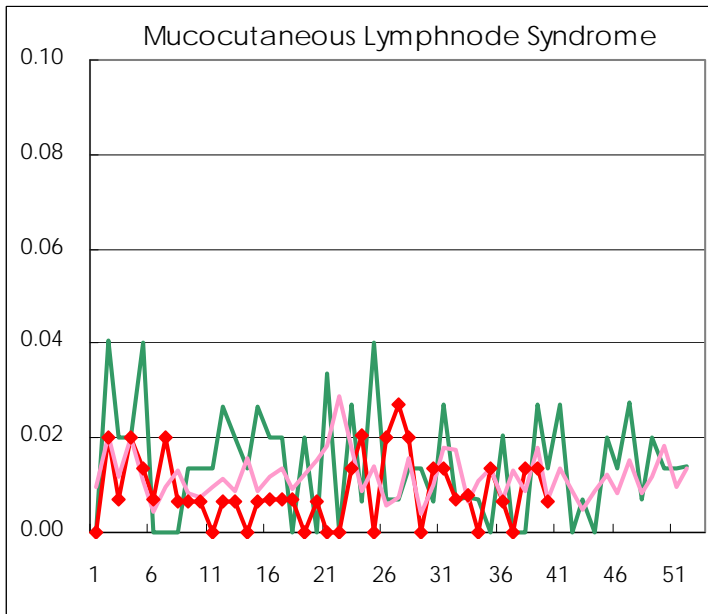
Diseases	2009				
	37th	38th	39th	40th	/sentinel
Respiratory syncytial virus infection	15	27	7	13	0.09
Pharyngoconjunctival fever	8	6	6	4	0.03
Group A streptococcal pharyngitis	82	97	51	87	0.58
Infectious gastroenteritis	469	385	232	327	2.19
Chickenpox	35	53	45	60	0.40
Hand, foot, and mouth disease	171	123	75	58	0.39
Erythema infectiosum	21	21	7	11	0.07
Exanthem subitum	97	93	62	104	0.70
Pertussis	4	5	4	7	0.05
Herpangina	143	115	61	39	0.26
Mumps	91	88	93	107	0.72
Cold with exanthems by Enterovirus	13	16	10	8	0.05
Mucocutaneous Lymphnode Syndrome		2	2	1	0.01
Influenza	1,694	2,837	1,896	2,773	9.60
Acute hemorrhagic conjunctivitis	1	4	1	2	0.05
Epidemic keratoconjunctivitis	18	15	10	15	0.38
Bacterial meningitis			1	1	0.04
Aseptic meningitis					
Mycoplasma pneumonia	9	7	3	7	0.29
Chlamydial pneumonia (excluding psittacosis)	1	2	1		

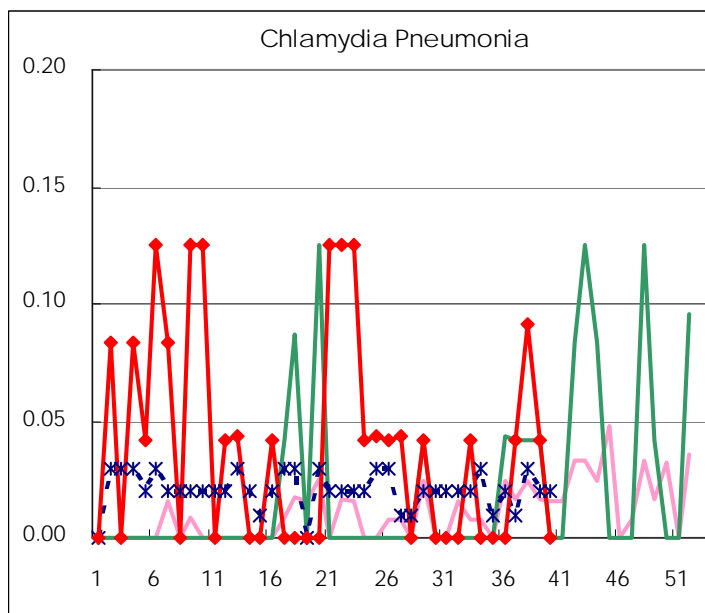
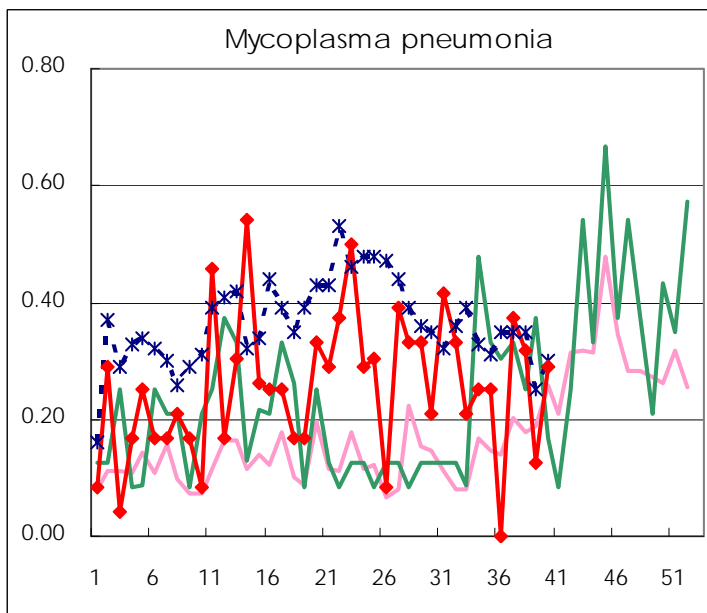
(Blank means 0.)

Disease Trend Graph (weekly reported cases per sentinel in comparison)









Number of sentinel facilities for weekly reporting

Types of sentinels	Number of sentinels	Sentinels having reported
Pediatric	150	149
Influenza	290	289
Ophthalmic	39	39
Specially-designated	24	24

Tokyo Metropolitan Government
Infectious Disease Surveillance Center