

---

INFECTIOUS DISEASES WEEKLY REPORT

# TOKYO IDWR

Tokyo Metropolitan Infectious Disease Surveillance Center

## 22 October 2009 / Number 42

### Surveillance System in Tokyo, Japan

The infectious diseases which all physicians must report

All physicians must report to health centers the incidence of the diseases which are shown at page one. Health centers electronically report the individual cases to Tokyo Metropolitan Infectious Disease Surveillance Center.

The infectious diseases required to be reported by the sentinels

The numbers of patients who visit the sentinel clinics or hospitals during a week are reported to health centers in Tokyo. And they electronically report the numbers to Tokyo Metropolitan Infectious Disease Surveillance Center. We have about 400 sentinel clinics and hospitals in Tokyo.

1st Week is early January and 52nd Week is end of December.

Tokyo Metropolitan Institute of Public Health  
Epidemiological Information Office

TEL:81-3-3363-3213 FAX:81-3-5332-7365

e-mail:[idsc@tokyo-eiken.go.jp](mailto:idsc@tokyo-eiken.go.jp)

URL:[idsc.tokyo-eiken.go.jp/](http://idsc.tokyo-eiken.go.jp/)

---

## Number of patients with the diseases which all physicians must report

Category	Diseases	Tokyo				Japan		
		39th	40th	41st	42nd	Cum 2009	42nd	Cum 2009
I	Ebola hemorrhagic fever							
	Crimean-Congo hemorrhagic fever							
	Smallpox							
	South American hemorrhagic fever							
	Plague							
	Marburg disease							
	Lassa fever							
II	Acute poliomyelitis							
	Tuberculosis	33	64	62	32	3231	214	20770
	Diphtheria							
	Severe Acute Respiratory Syndrome(SARS)							
Avian influenza H5N1								
III	Cholera					2	1	11
	Shigellosis	1	1	1	2	38	5	142
	Enterohemorrhagic Escherichia coli infection	7	5	6	4	271	54	3,187
	Typhoid fever					10		22
	Paratyphoid fever	1	1	1	1	11	1	20
IV	Hepatitis E					6	2	40
	West Nile fever							
	Hepatitis A		1		1	18		99
	Echinococcosis					1		18
	Yellow fever							
	Psittacosis					1	1	18
	Omsk hemorrhagic fever							
	Relapsing fever							
	Kyasanur forest disease							
	Q fever					1		2
	Rabies							
	Coccidioidomycosis					1		2
	Monkeypox							
	Hemorrhagic fever with renal syndrome							
	Western equine encephalitis							
	Tick-borne encephalitis							
	Anthrax							
	Scrub typhus(Tsutsugamushi disease)				1	3	2	114
	Dengue fever		1	2	1	26	2	66
	Eastern equine encephalitis							
	Avian influenza (excluding H5N1)							
	Nipah virus infection							
	Japanese spotted fever							77
	Japanese encephalitis							1
	Epidemic typhus							
	Hantavirus pulmonary syndrome							
	Herpes B virus infection							
	Glanders							
	Brucellosis			1		1		2
	Venezuelan equine encephalitis							
Hendra virus infection								
Botulism								
Malaria	1	1	2	1	24	1	52	
Tularemia								
Lyme disease					1	1	6	
Lyssavirus infection(excluding rabies)								
Rift valley fever								
Melioidosis								
Legionellosis	1				43	12	535	
Leptospirosis							12	
Rocky mountain spotted fever								

Category	Diseases	Tokyo					Japan	
		39th	40th	41st	42nd	Cum 2009	42nd	Cum 2009
V	Amebiasis	1	5	3	2	114	5	636
	Viral hepatitis(excluding hepatitis A and E)			1		29	1	174
	Acute encephalitis(excluding JE and WNE)		2	4	1	26	8	234
	Cryptosporidiosis				1	2		13
	Creutzfeldt-Jakob disease					12	1	105
	Severe invasive streptococcal infections(TSLS)					9		87
	Acquired immunodeficiency syndrome (AIDS)	5	5	8	7	386	11	1,148
	Giardiasis	1				19		61
	Meningococcal meningitis					1		9
	Congenital rubella syndrome							1
	Syphilis	2	3	2	4	161	4	553
	Tetanus		1			6	2	97
	Vancomycin-resistant S. aureus infection							
	Vancomycin-resistant Enterococcus infection		1			11		77
	Rubella	1	1	1	1	17	1	137
Measles		4	2	1	101	1	672	
Novel Flu	Novel influenza (swine-origin influenza A/H1N1) *	—	—	—	—	1187	—	**5038

\* laboratory confirmed cases and suspected cases

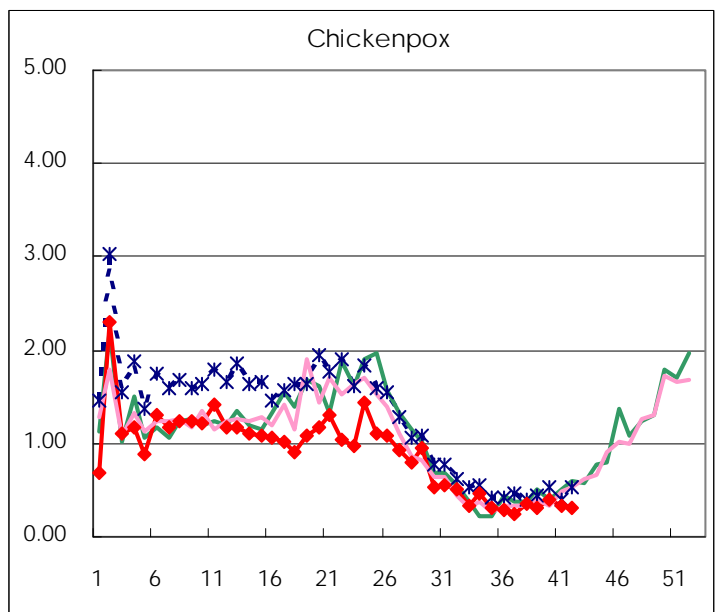
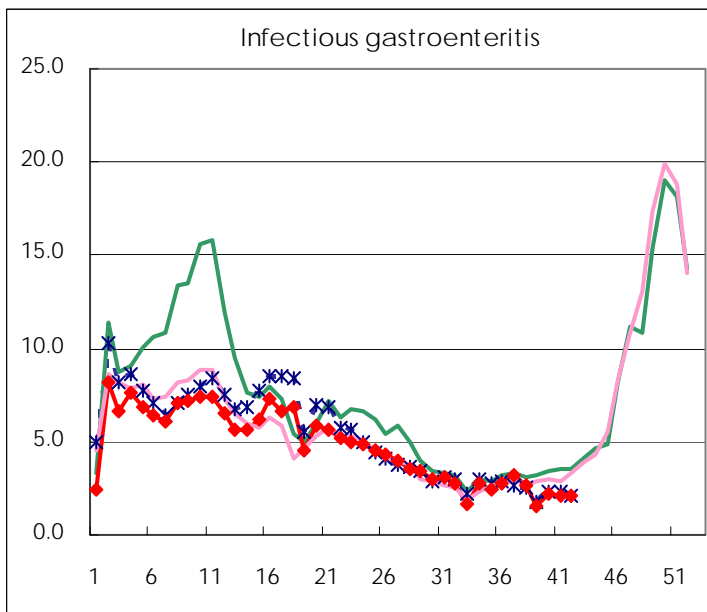
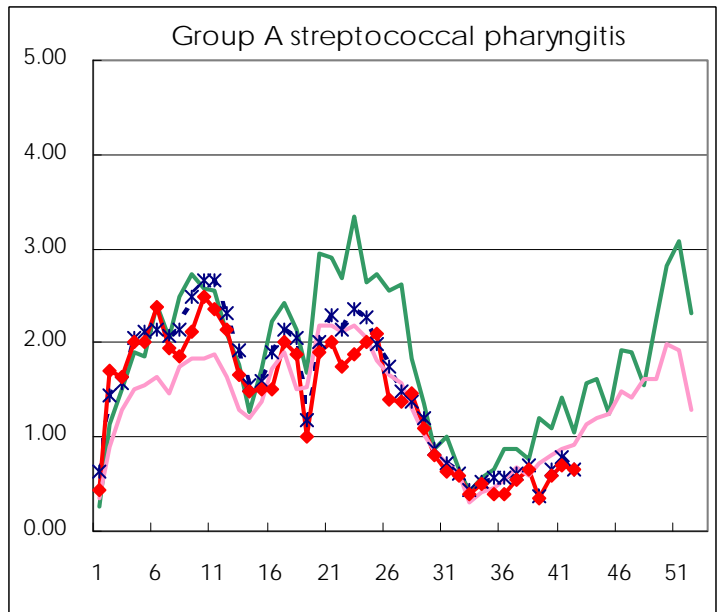
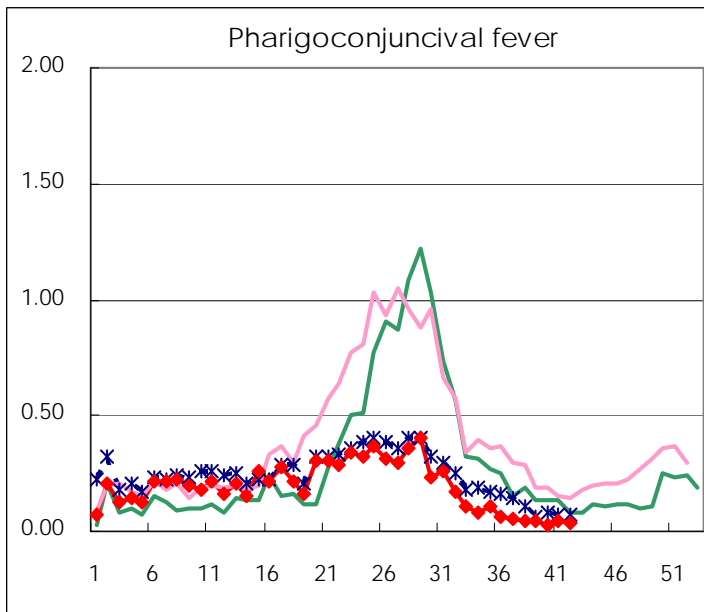
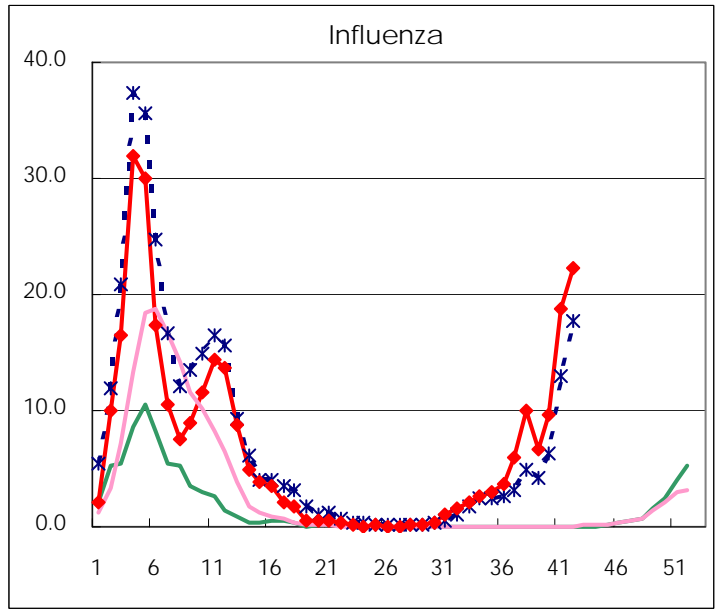
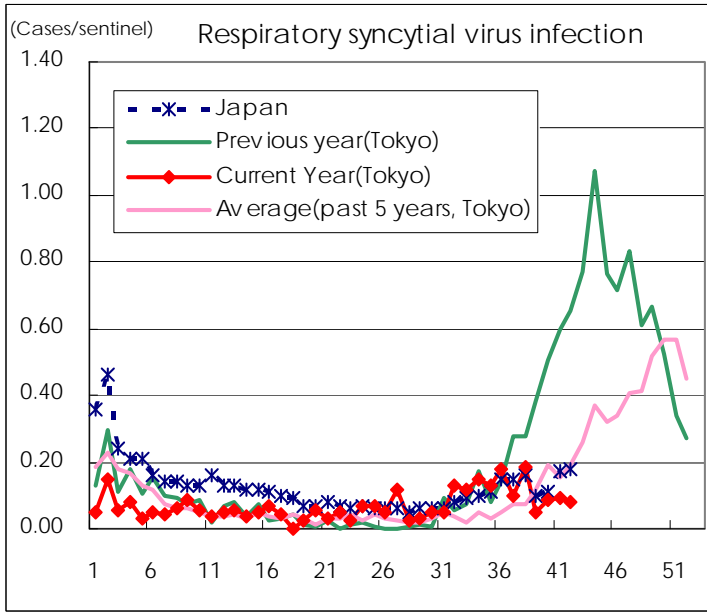
\*\* As of July 24

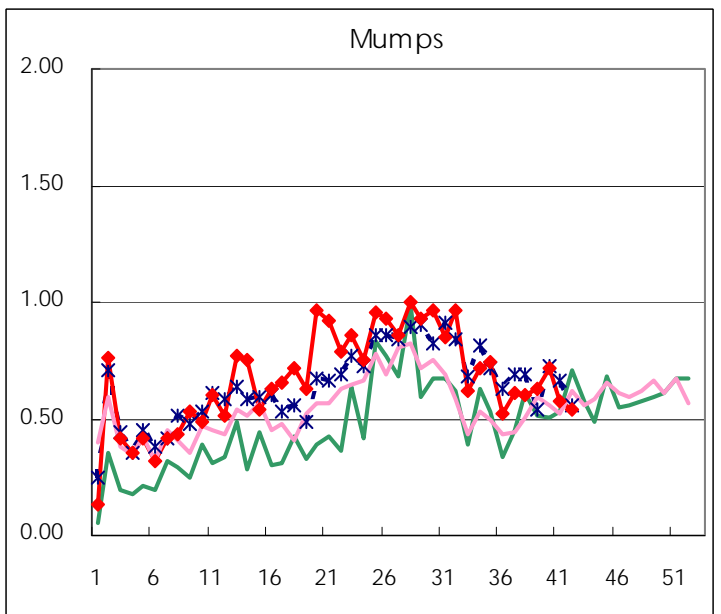
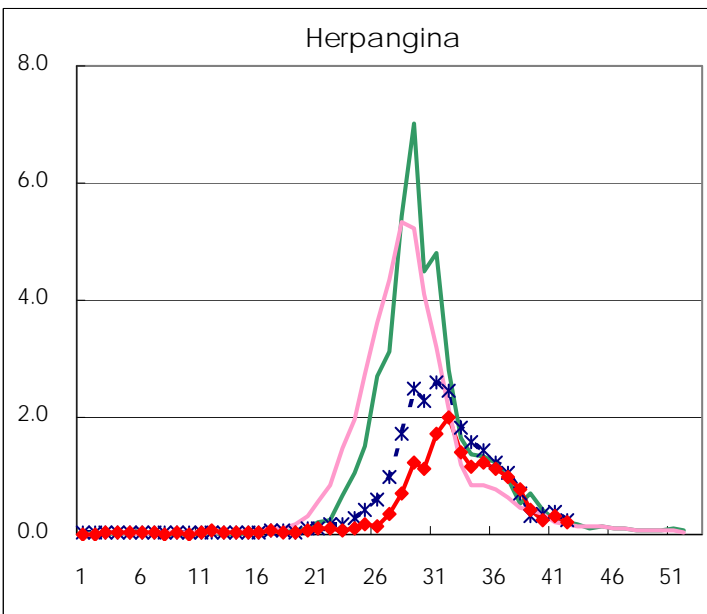
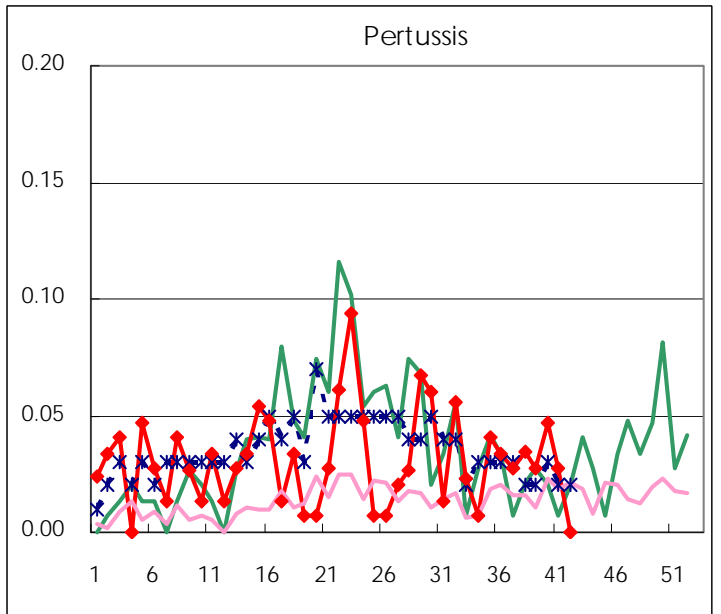
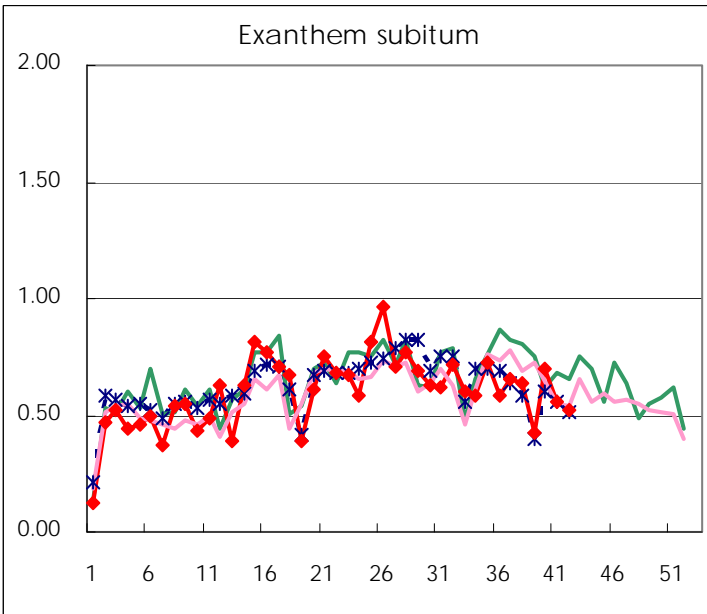
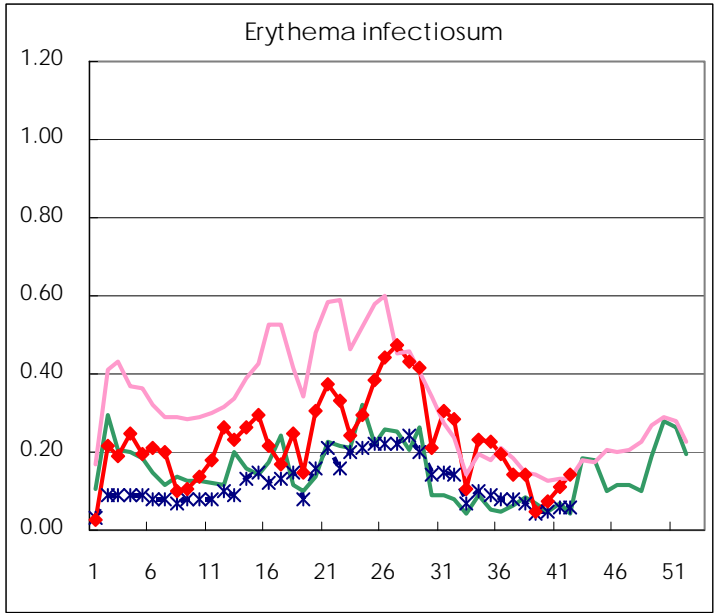
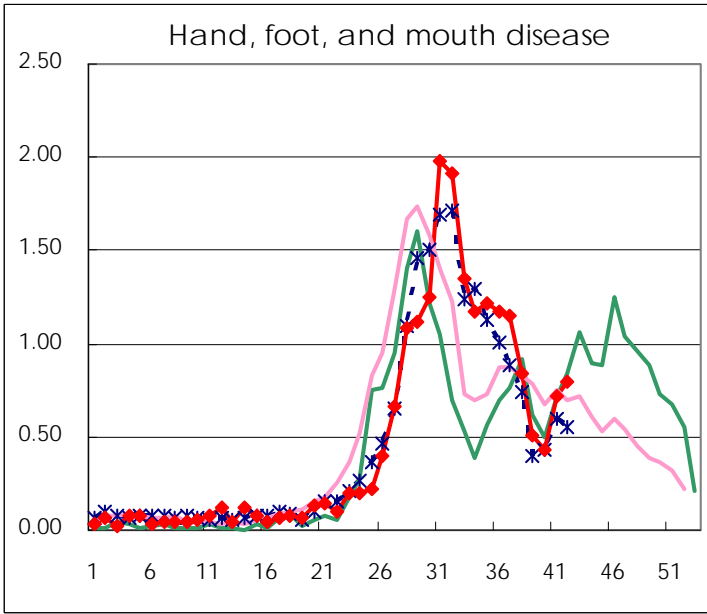
Number of patients with the diseases to be reported  
by the designated clinics and hospitals

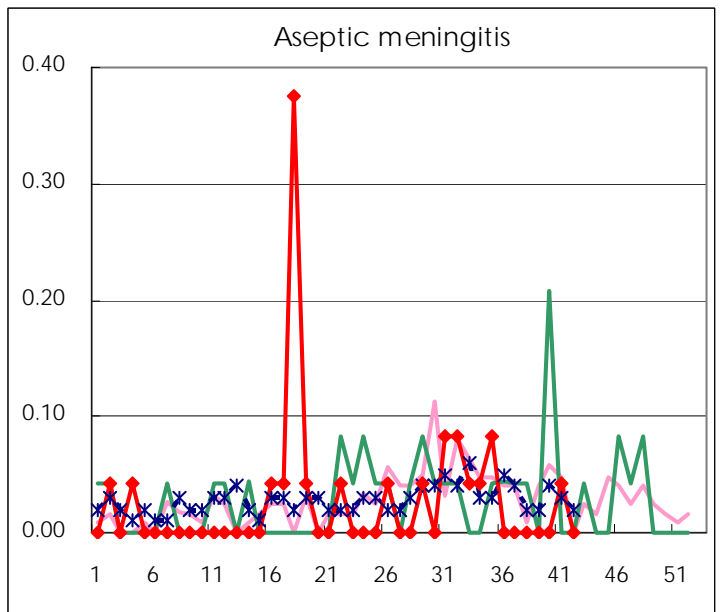
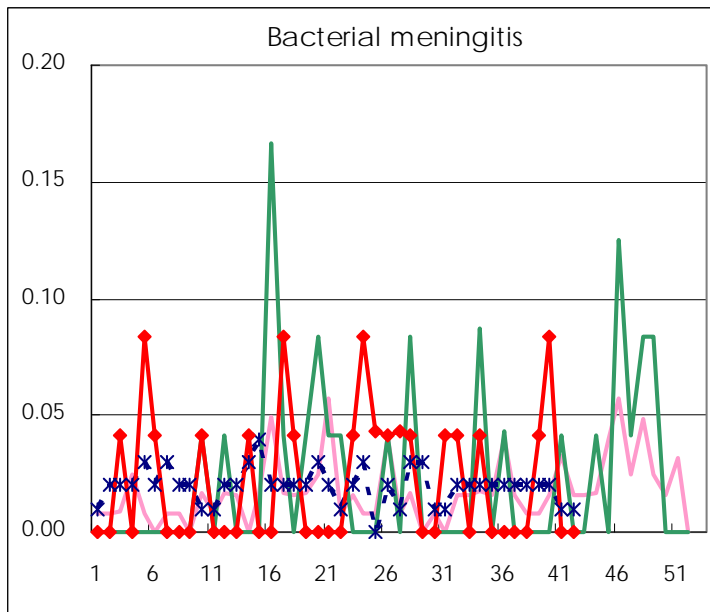
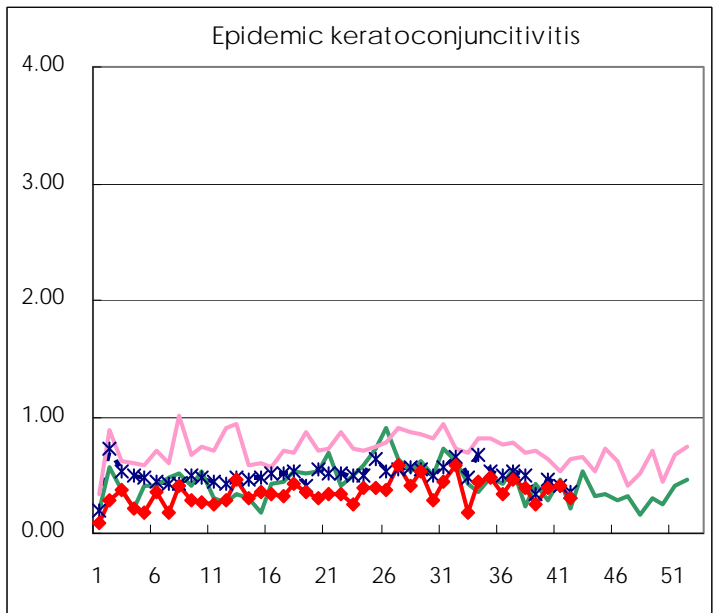
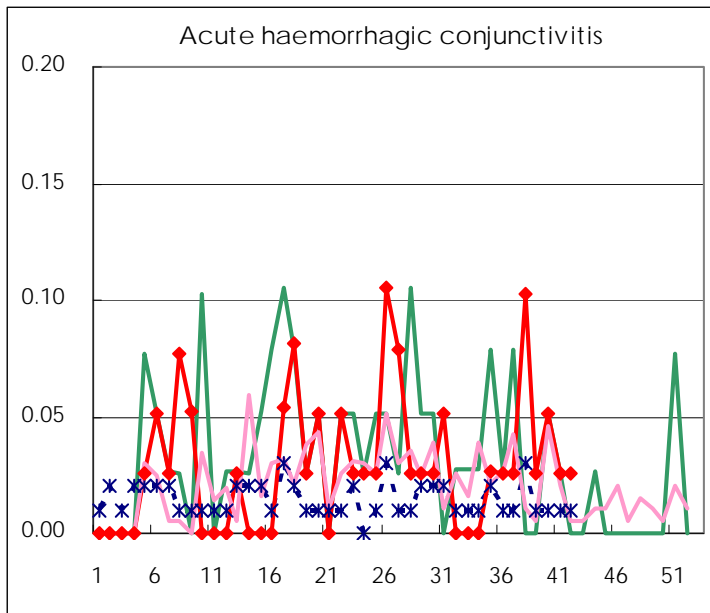
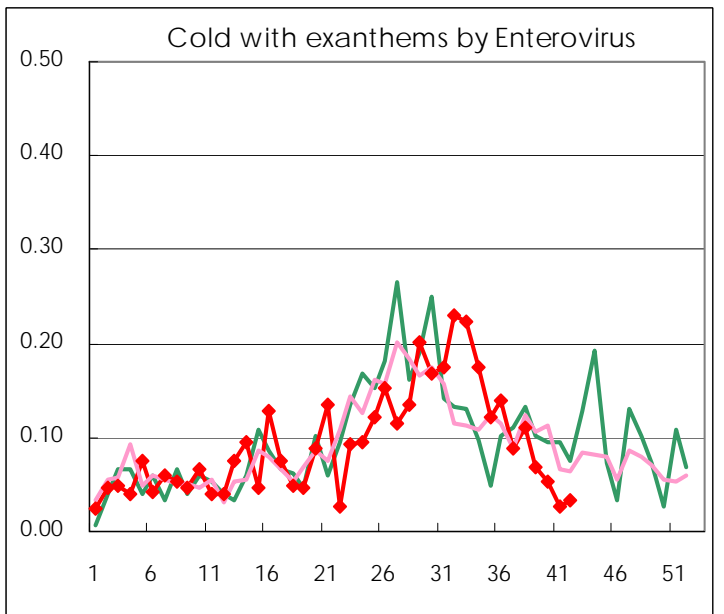
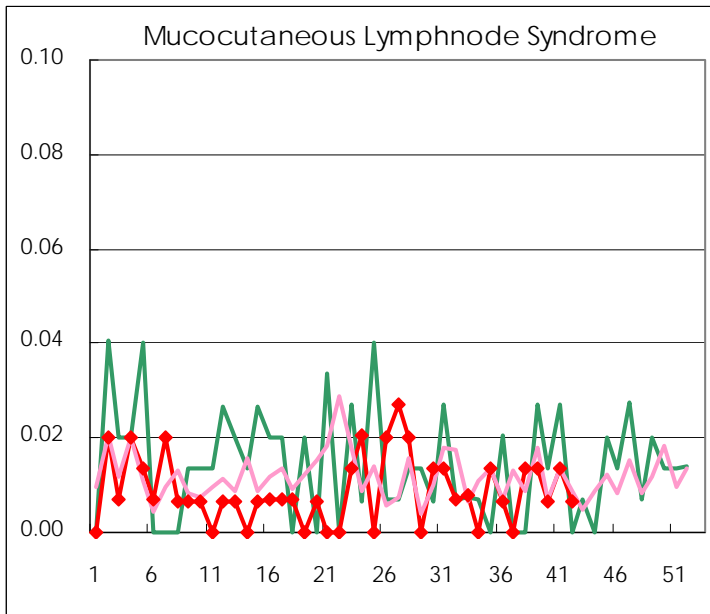
Diseases	2009				
	39th	40th	41st	42nd	/sentinel
Respiratory syncytial virus infection	7	13	14	12	0.08
Pharyngoconjunctival fever	6	4	6	5	0.03
Group A streptococcal pharyngitis	51	87	105	98	0.66
Infectious gastroenteritis	232	327	312	315	2.11
Chickenpox	45	60	50	47	0.32
Hand, foot, and mouth disease	75	65	106	119	0.80
Erythema infectiosum	7	11	16	21	0.14
Exanthem subitum	62	104	83	78	0.52
Pertussis	4	7	4		
Herpangina	61	39	46	32	0.21
Mumps	93	107	85	81	0.54
Cold with exanthems by Enterovirus	10	8	4	5	0.03
Mucocutaneous Lymphnode Syndrome	2	1	2	1	0.01
Influenza	1,896	2,794	5,391	6,415	22.20
Acute hemorrhagic conjunctivitis	1	2	1	1	0.03
Epidemic keratoconjunctivitis	10	15	16	12	0.31
Bacterial meningitis	1	2			
Aseptic meningitis			1		
Mycoplasma pneumonia	3	7	2	9	0.43
Chlamydial pneumonia (excluding psittacosis)	1				

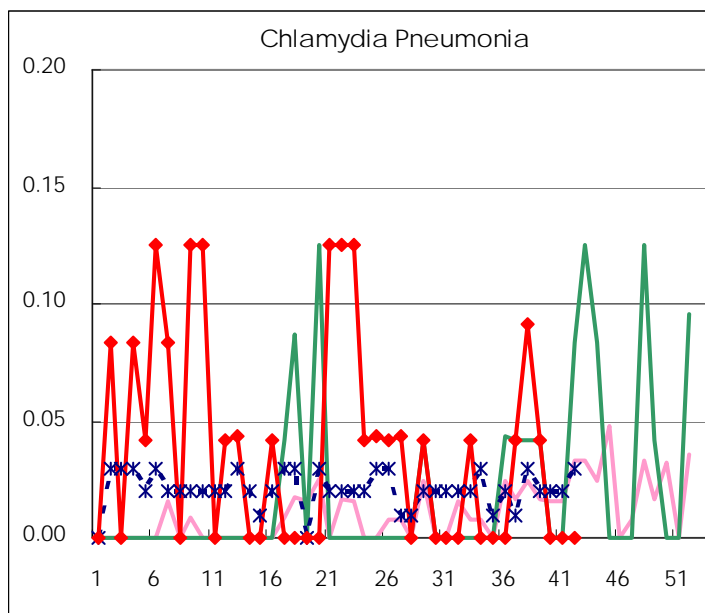
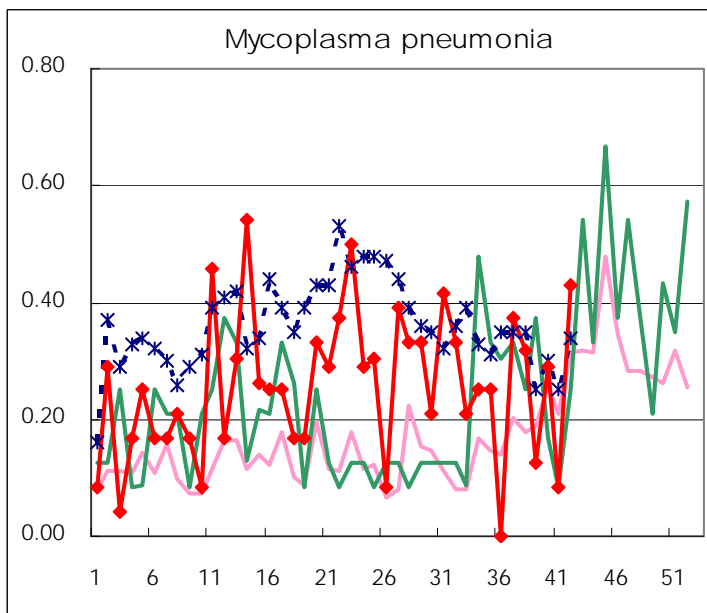
( Blank means 0. )

# Disease Trend Graph (weekly reported cases per sentinel in comparison)









Number of sentinel facilities for weekly reporting

Types of sentinels	Number of sentinels	Sentinels having reported
Pediatric	150	149
Influenza	290	289
Ophthalmic	39	39
Specially-designated	24	21

Tokyo Metropolitan Government  
Infectious Disease Surveillance Center