
INFECTIOUS DISEASES WEEKLY REPORT

TOKYO IDWR

Tokyo Metropolitan Infectious Disease Surveillance Center

29 October 2009 / Number 43

Surveillance System in Tokyo, Japan

The infectious diseases which all physicians must report

All physicians must report to health centers the incidence of the diseases which are shown at page one. Health centers electronically report the individual cases to Tokyo Metropolitan Infectious Disease Surveillance Center.

The infectious diseases required to be reported by the sentinels

The numbers of patients who visit the sentinel clinics or hospitals during a week are reported to health centers in Tokyo. And they electronically report the numbers to Tokyo Metropolitan Infectious Disease Surveillance Center. We have about 400 sentinel clinics and hospitals in Tokyo.

1st Week is early January and 52nd Week is end of December.

Tokyo Metropolitan Institute of Public Health
Epidemiological Information Office

TEL:81-3-3363-3213 FAX:81-3-5332-7365

e-mail:idsc@tokyo-eiken.go.jp

URL:idsc.tokyo-eiken.go.jp/

Number of patients with the diseases which all physicians must report

Category	Diseases	Tokyo				Japan		
		40th	41st	42nd	43rd	Cum 2009	43rd	Cum 2009
I	Ebola hemorrhagic fever							
	Crimean-Congo hemorrhagic fever							
	Smallpox							
	South American hemorrhagic fever							
	Plague							
	Marburg disease							
	Lassa fever							
II	Acute poliomyelitis							
	Tuberculosis	66	73	40	55	3319	291	21302
	Diphtheria							
	Severe Acute Respiratory Syndrome(SARS)							
	Avian influenza H5N1							
III	Cholera					2	3	14
	Shigellosis	1	1	2		38	6	148
	Enterohemorrhagic Escherichia coli infection	5	6	4	9	280	72	3,283
	Typhoid fever					10	1	23
	Paratyphoid fever	1	1	1		11		20
IV	Hepatitis E					6		40
	West Nile fever							
	Hepatitis A	1		1		18		99
	Echinococcosis					1		17
	Yellow fever							
	Psittacosis					1	1	19
	Omsk hemorrhagic fever							
	Relapsing fever							
	Kyasanur forest disease							
	Q fever					1		2
	Rabies							
	Coccidioidomycosis					1		2
	Monkeypox							
	Hemorrhagic fever with renal syndrome							
	Western equine encephalitis							
	Tick-borne encephalitis							
	Anthrax							
	Scrub typhus(Tsutsugamushi disease)			1		3	5	120
	Dengue fever	1	2	1		26	1	69
	Eastern equine encephalitis							
	Avian influenza (excluding H5N1)							
	Nipah virus infection							
	Japanese spotted fever						6	87
	Japanese encephalitis						1	2
	Epidemic typhus							
	Hantavirus pulmonary syndrome							
	Herpes B virus infection							
	Glanders							
	Brucellosis		1				1	2
	Venezuelan equine encephalitis							
Hendra virus infection								
Botulism								
Malaria	1	2	1	1	25	1	53	
Tularemia								
Lyme disease					1		6	
Lyssavirus infection(excluding rabies)								
Rift valley fever								
Melioidosis								
Legionellosis					43	11	551	
Leptospirosis							12	
Rocky mountain spotted fever								

Category	Diseases	Tokyo					Japan	
		40th	41st	42nd	43rd	Cum 2009	43rd	Cum 2009
V	Amebiasis	5	3	2	2	116	2	641
	Viral hepatitis(excluding hepatitis A and E)		1		1	30	3	178
	Acute encephalitis(excluding JE and WNE)	2	4	1	7	33	12	260
	Cryptosporidiosis			1		2		13
	Creutzfeldt-Jakob disease					12	3	108
	Severe invasive streptococcal infections(TSLS)					9		87
	Acquired immunodeficiency syndrome (AIDS)	5	8	7	8	394	8	1,168
	Giardiasis				1	20	1	63
	Meningococcal meningitis					1		9
	Congenital rubella syndrome							1
	Syphilis	3	2	4	2	163	4	566
	Tetanus	1				6	1	99
	Vancomycin-resistant S. aureus infection							
	Vancomycin-resistant Enterococcus infection	1				11	2	80
	Rubella	1	1	1	1	18	1	139
Measles	4	2	1	1	102	4	680	
Novel Flu	Novel influenza (swine-origin influenza A/H1N1) *	—	—	—	—	1187	—	**5038

* laboratory confirmed cases and suspected cases

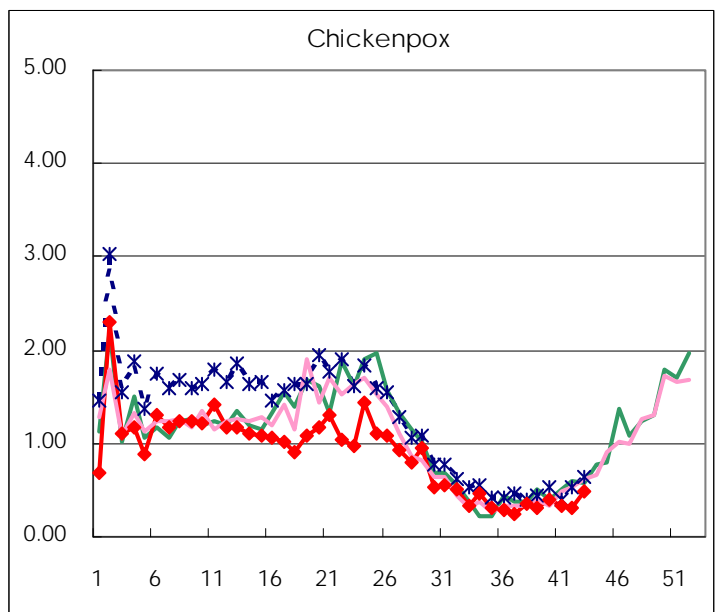
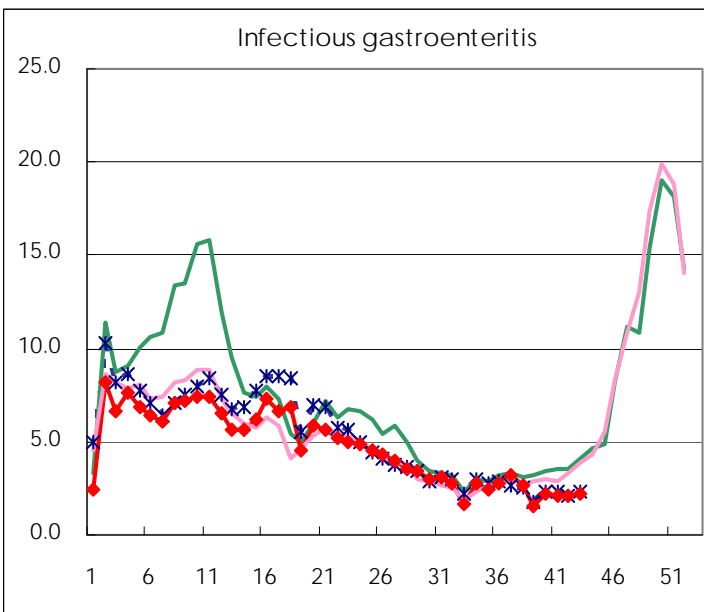
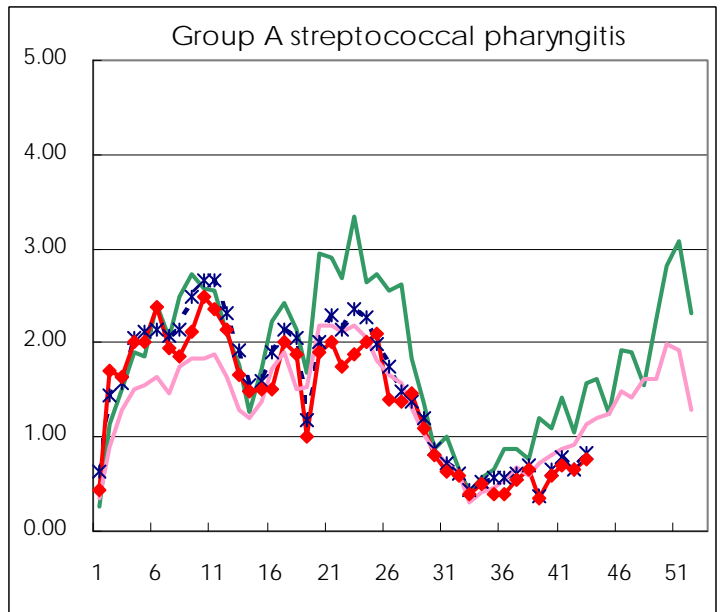
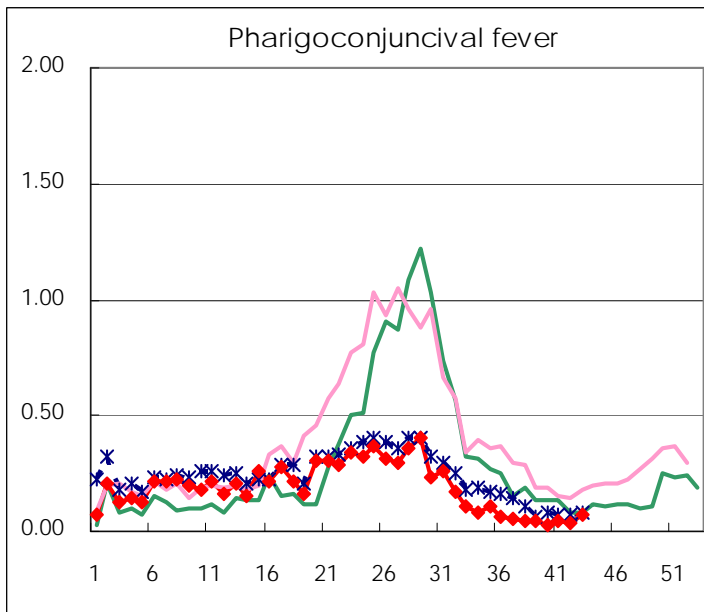
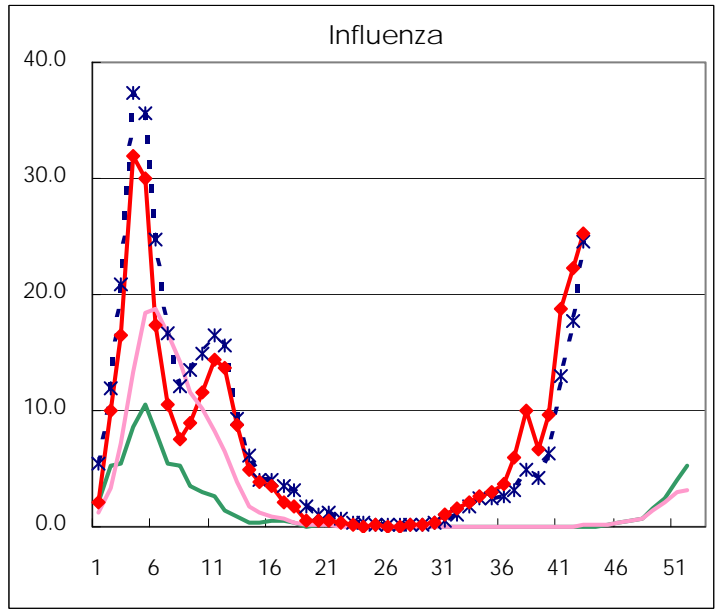
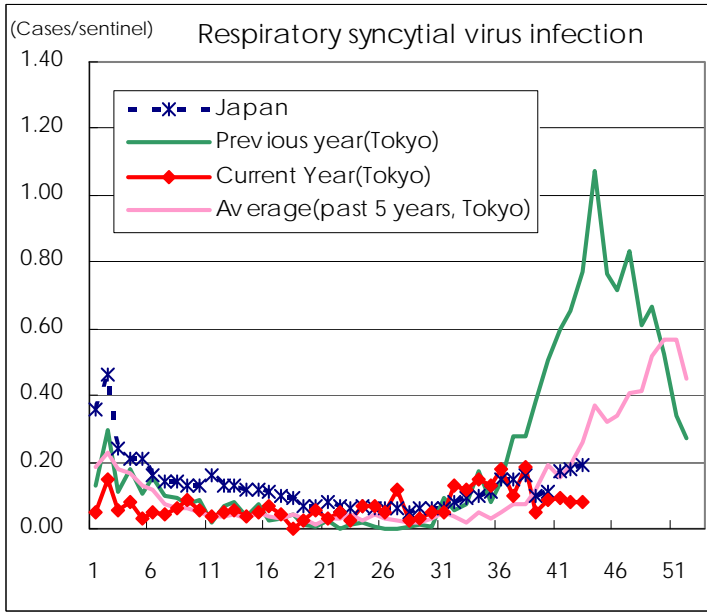
** As of July 24

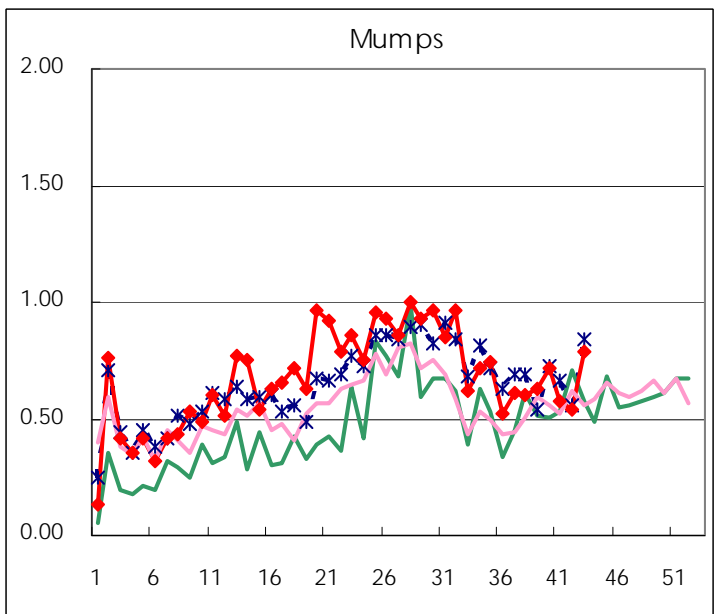
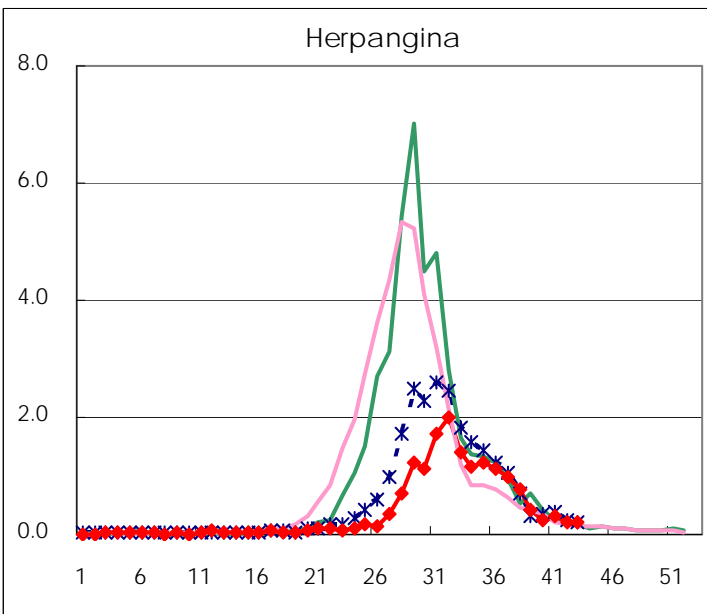
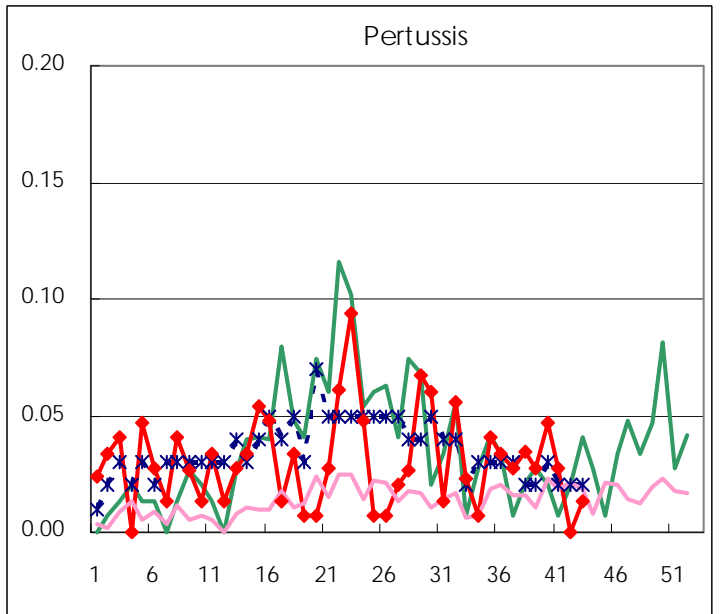
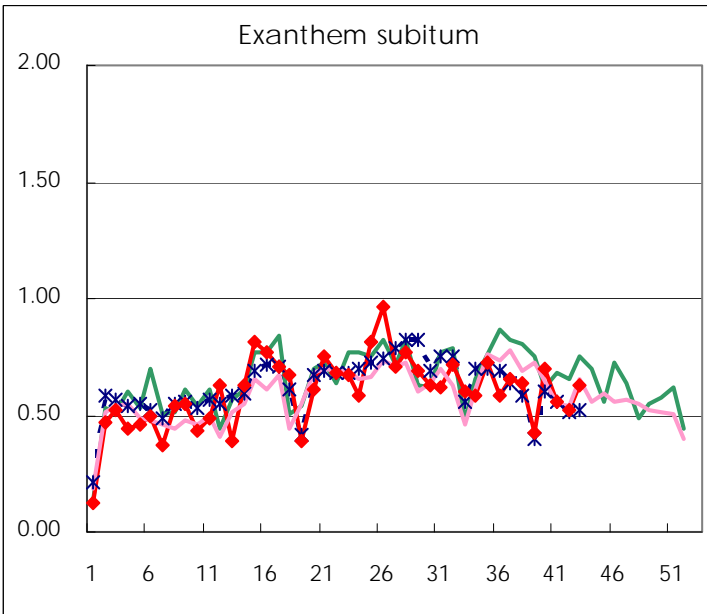
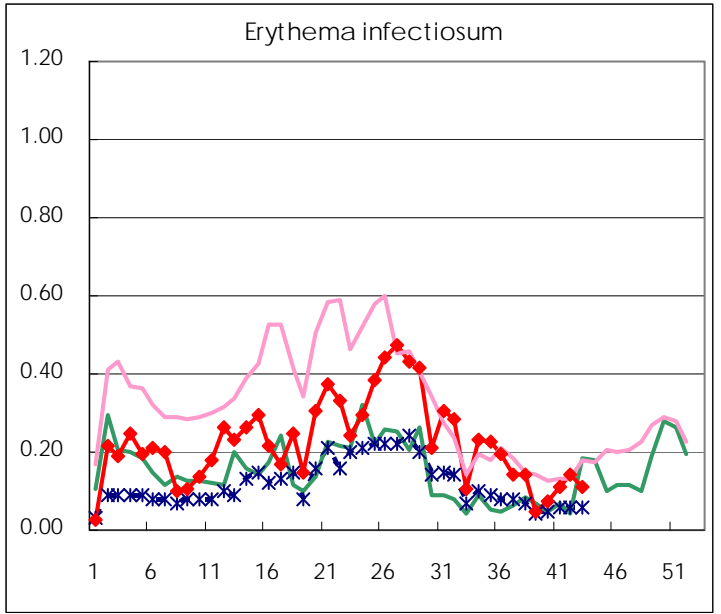
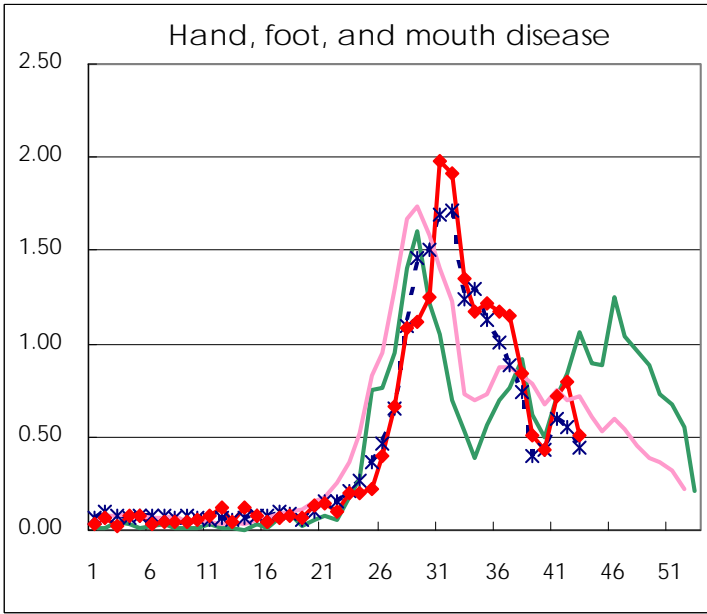
Number of patients with the diseases to be reported
by the designated clinics and hospitals

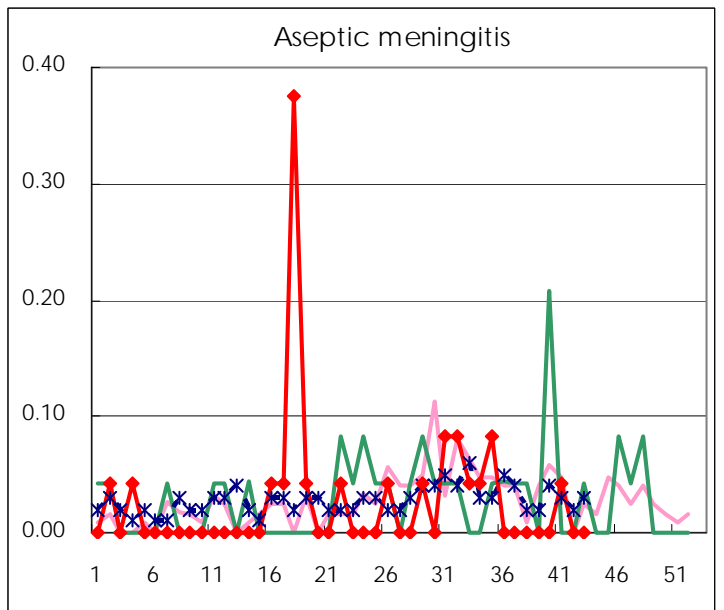
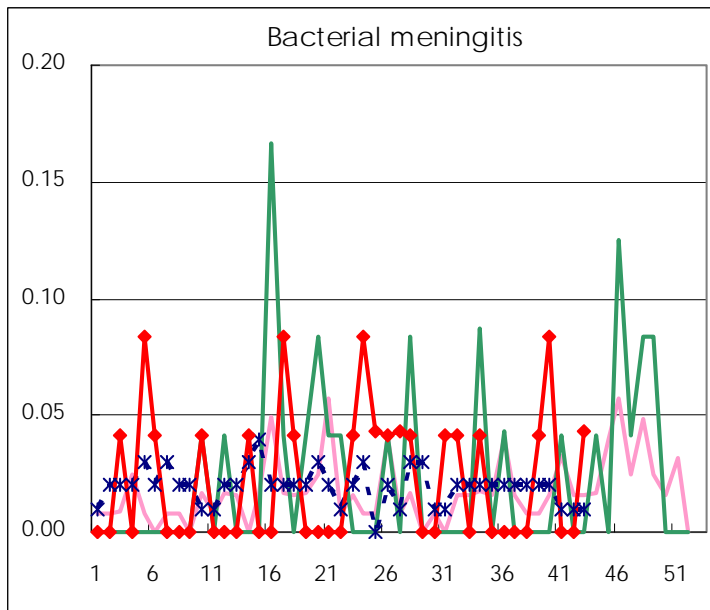
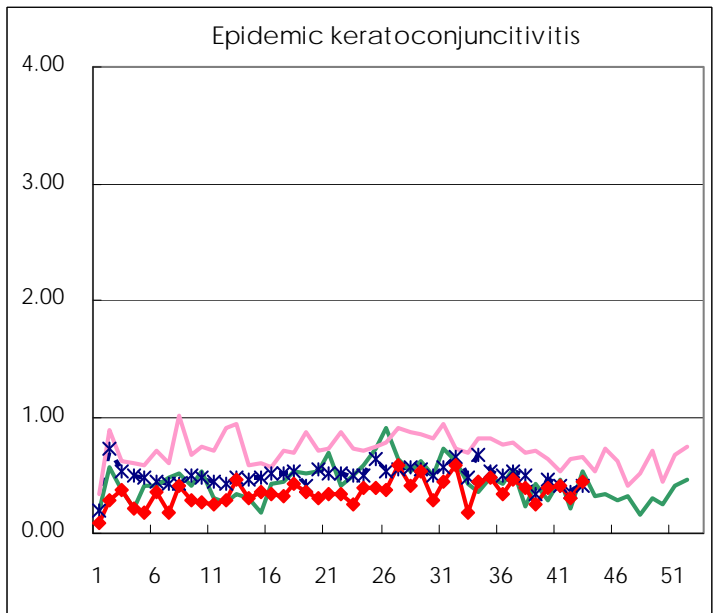
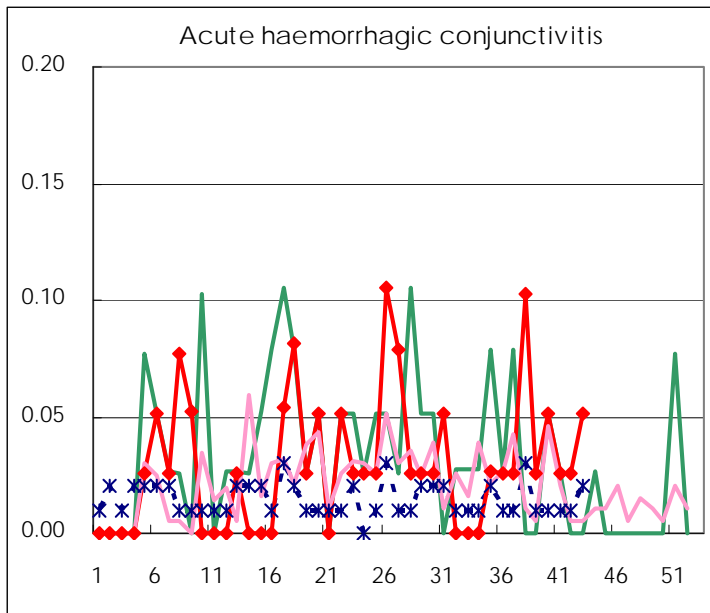
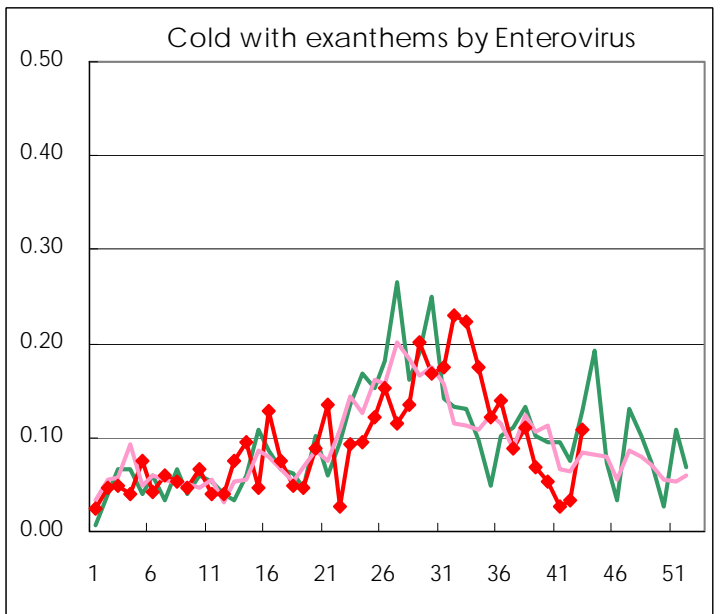
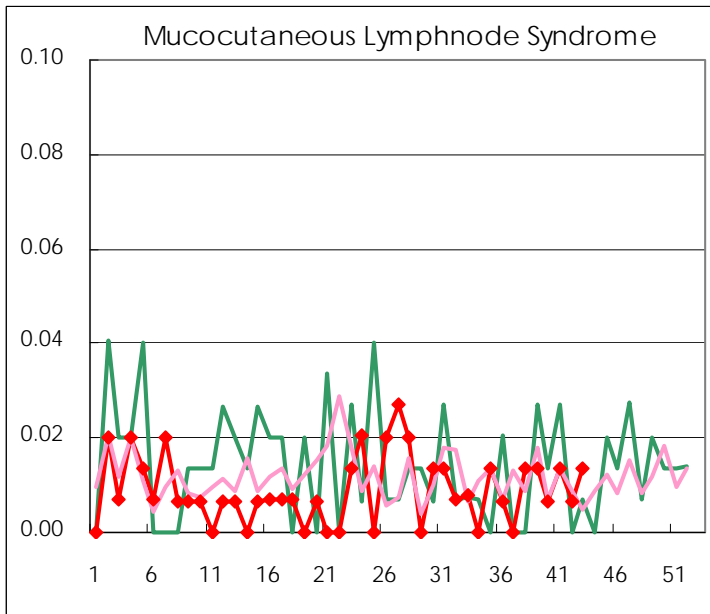
Diseases	2009				
	40th	41st	42nd	43rd	/sentinel
Respiratory syncytial virus infection	13	14	12	12	0.08
Pharyngoconjunctival fever	4	6	5	11	0.07
Group A streptococcal pharyngitis	87	105	98	114	0.77
Infectious gastroenteritis	327	312	315	324	2.19
Chickenpox	60	50	47	72	0.49
Hand, foot, and mouth disease	65	106	119	75	0.51
Erythema infectiosum	11	16	21	16	0.11
Exanthem subitum	104	83	78	93	0.63
Pertussis	7	4		2	0.01
Herpangina	39	46	32	29	0.20
Mumps	107	85	81	117	0.79
Cold with exanthems by Enterovirus	8	4	5	16	0.11
Mucocutaneous Lymphnode Syndrome	1	2	1	2	0.01
Influenza	2,794	5,391	6,459	7,269	25.24
Acute hemorrhagic conjunctivitis	2	1	1	2	0.05
Epidemic keratoconjunctivitis	15	16	12	17	0.44
Bacterial meningitis	2			1	0.04
Aseptic meningitis		1			
Mycoplasma pneumonia	7	2	9	5	0.22
Chlamydial pneumonia (excluding psittacosis)				2	0.09

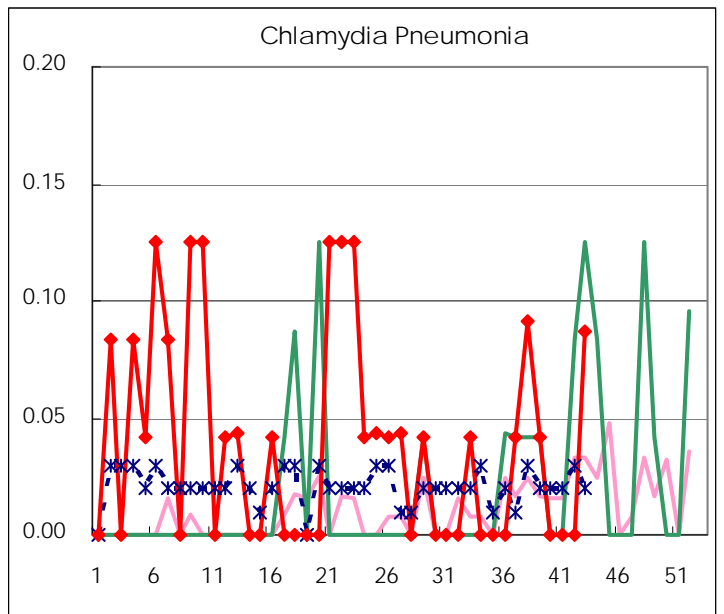
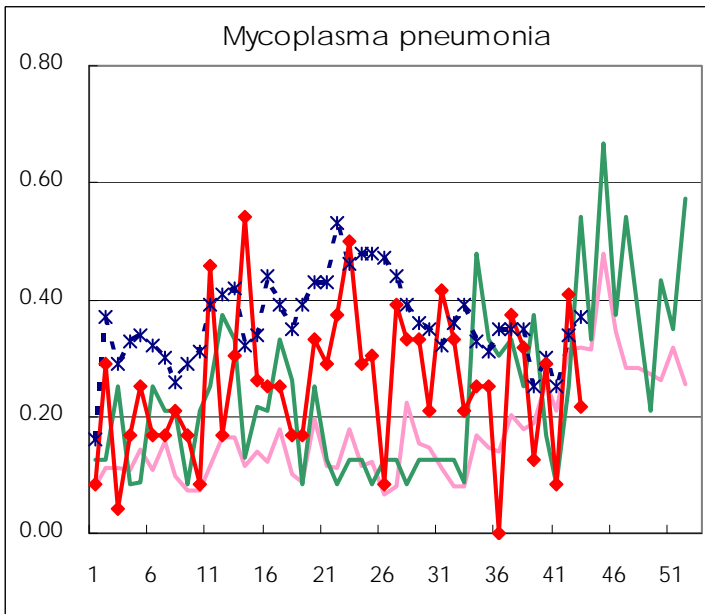
(Blank means 0.)

Disease Trend Graph (weekly reported cases per sentinel in comparison)









Number of sentinel facilities
for weekly reporting

Types of sentinels	Number of sentinels	Sentinels having reported
Pediatric	150	148
Influenza	290	288
Ophthalmic	39	39
Specially-designated	24	23

Tokyo Metropolitan Government
Infectious Disease Surveillance Center