
INFECTIOUS DISEASES WEEKLY REPORT

TOKYO IDWR

Tokyo Metropolitan Infectious Disease Surveillance Center

12 November 2009 / Number 45

Surveillance System in Tokyo, Japan

The infectious diseases which all physicians must report

All physicians must report to health centers the incidence of the diseases which are shown at page one. Health centers electronically report the individual cases to Tokyo Metropolitan Infectious Disease Surveillance Center.

The infectious diseases required to be reported by the sentinels

The numbers of patients who visit the sentinel clinics or hospitals during a week are reported to health centers in Tokyo. And they electronically report the numbers to Tokyo Metropolitan Infectious Disease Surveillance Center. We have about 400 sentinel clinics and hospitals in Tokyo.

1st Week is early January and 52nd Week is end of December.

Tokyo Metropolitan Institute of Public Health
Epidemiological Information Office

TEL:81-3-3363-3213 FAX:81-3-5332-7365
e-mail:idsc@tokyo-eiken.go.jp
URL:idsc.tokyo-eiken.go.jp/

Number of patients with the diseases which all physicians must report

Category	Diseases	Tokyo				Cum 2009	Japan	
		42nd	43rd	44th	45th		45th	Cum 2009
I	Ebola hemorrhagic fever							
	Crimean-Congo hemorrhagic fever							
	Smallpox							
	South American hemorrhagic fever							
	Plague							
	Marburg disease							
	Lassa fever							
II	Acute poliomyelitis							
	Tuberculosis	47	71	49	26	3429	225	22140
	Diphtheria							
	Severe Acute Respiratory Syndrome(SARS)							
	Avian influenza H5N1							
III	Cholera		1			3		15
	Shigellosis	2		1		39	1	152
	Enterohemorrhagic Escherichia coli infection	4	9	7	2	289	37	3,524
	Typhoid fever					10	1	25
	Paratyphoid fever	1				11	1	22
IV	Hepatitis E					6		45
	West Nile fever							
	Hepatitis A	1		1	1	20	1	104
	Echinococcosis					1		19
	Yellow fever							
	Psittacosis					1		19
	Omsk hemorrhagic fever							
	Relapsing fever							
	Kyasanur forest disease							
	Q fever					1		2
	Rabies							
	Coccidioidomycosis					1		2
	Monkeypox							
	Hemorrhagic fever with renal syndrome							
	Western equine encephalitis							
	Tick-borne encephalitis							
	Anthrax							
	Scrub typhus(Tsutsugamushi disease)	1				3	15	156
	Dengue fever	1		4	1	31	1	81
	Eastern equine encephalitis							
	Avian influenza (excluding H5N1)							
	Nipah virus infection							
	Japanese spotted fever						5	108
	Japanese encephalitis							2
	Epidemic typhus							
	Hantavirus pulmonary syndrome							
	Herpes B virus infection							
	Glanders							
	Brucellosis					1		2
	Venezuelan equine encephalitis							
Hendra virus infection								
Botulism								
Malaria	1	1			25		53	
Tularemia								
Lyme disease					1		7	
Lyssavirus infection(excluding rabies)								
Rift valley fever								
Melioidosis								
Legionellosis			2		45	5	576	
Leptospirosis							12	
Rocky mountain spotted fever								

Category	Diseases	Tokyo				Japan		
		42nd	43rd	44th	45th	Cum 2009	45th	Cum 2009
V	Amebiasis	2	2	3	4	123	7	663
	Viral hepatitis(excluding hepatitis A and E)		1	1		31	2	188
	Acute encephalitis(excluding JE and WNE)	1	7	1	1	35	10	310
	Cryptosporidiosis	1				2		14
	Creutzfeldt-Jakob disease				2	14	1	112
	Severe invasive streptococcal infections(TSLS)					9	1	90
	Acquired immunodeficiency syndrome (AIDS)	7	8	5	7	406	8	1,207
	Giardiasis		1	1		21		64
	Meningococcal meningitis					1		9
	Congenital rubella syndrome							1
	Syphilis	4	2	4	4	171	3	588
	Tetanus					6	1	103
	Vancomycin-resistant S. aureus infection							
	Vancomycin-resistant Enterococcus infection	1				12	2	88
	Rubella	1	1			18		139
Measles	1	1		2	104	5	689	
Novel Flu	Novel influenza (swine-origin influenza A/H1N1) *	—	—	—	—	1187	—	**5038

* laboratory confirmed cases and suspected cases

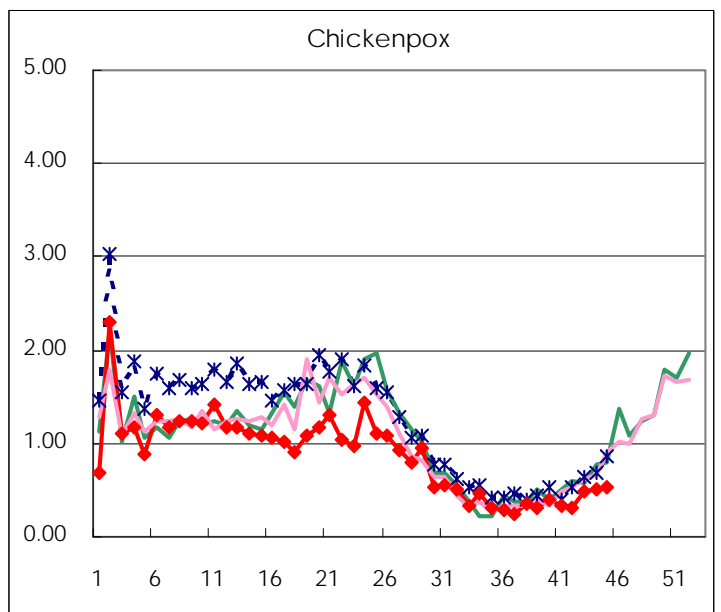
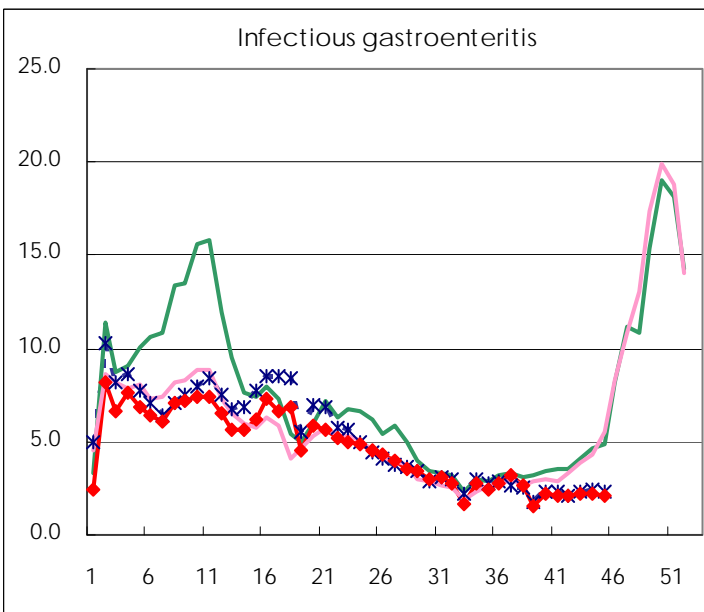
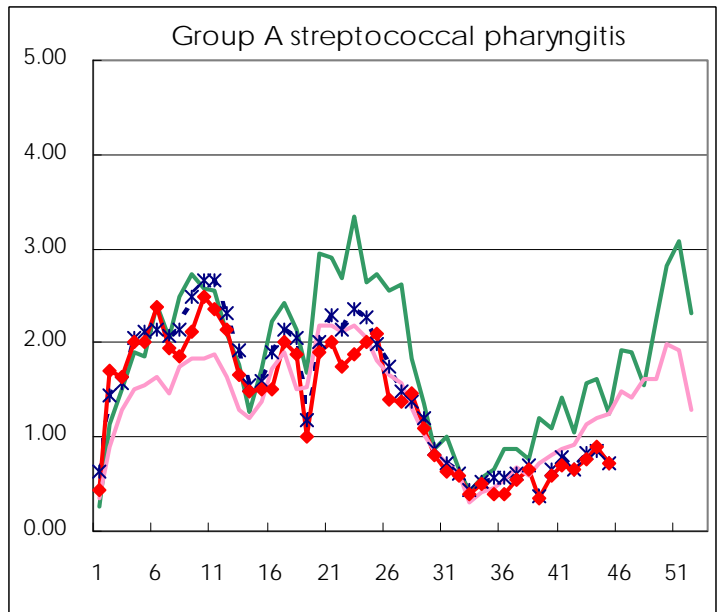
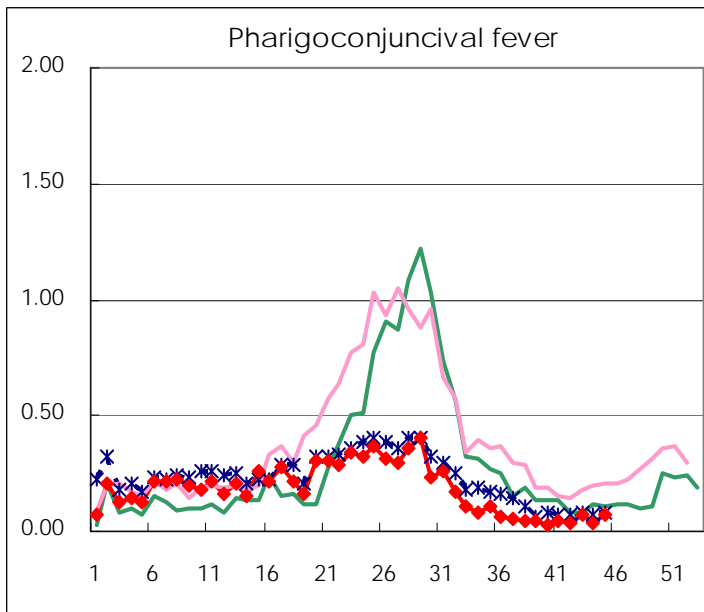
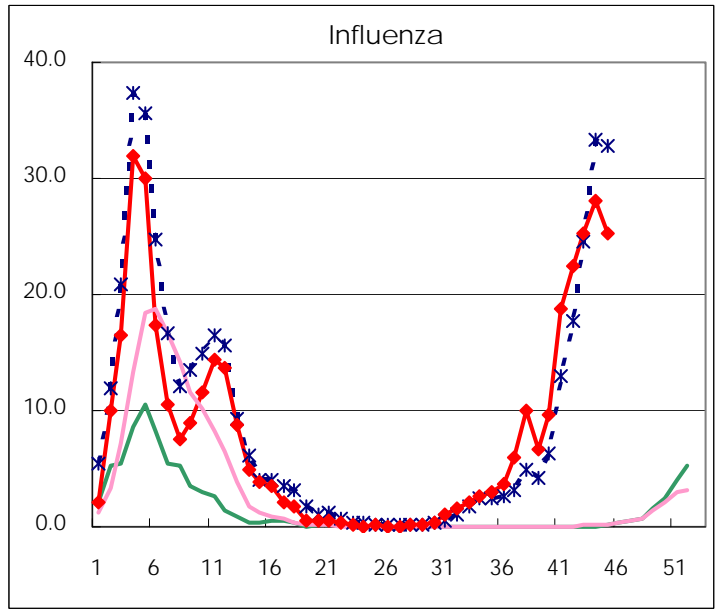
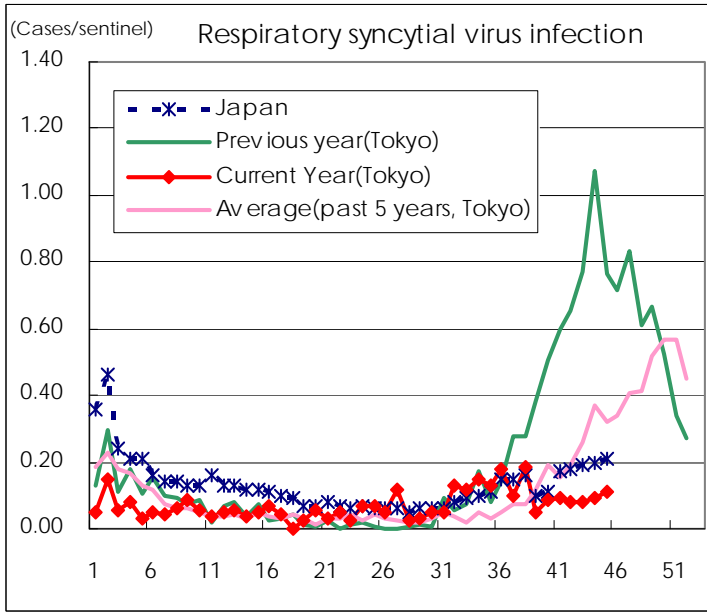
** As of July 24

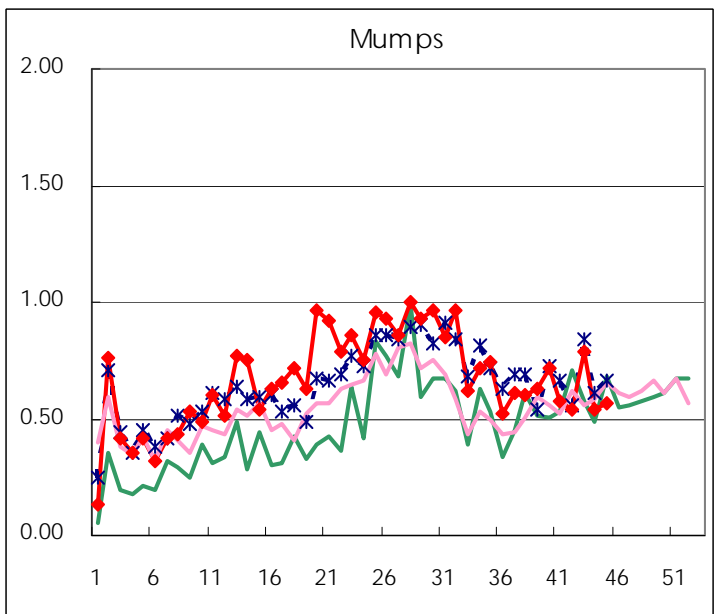
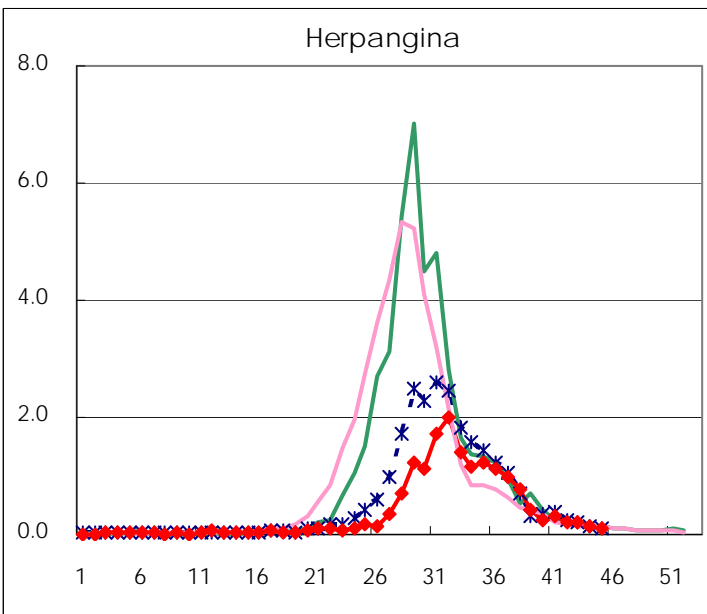
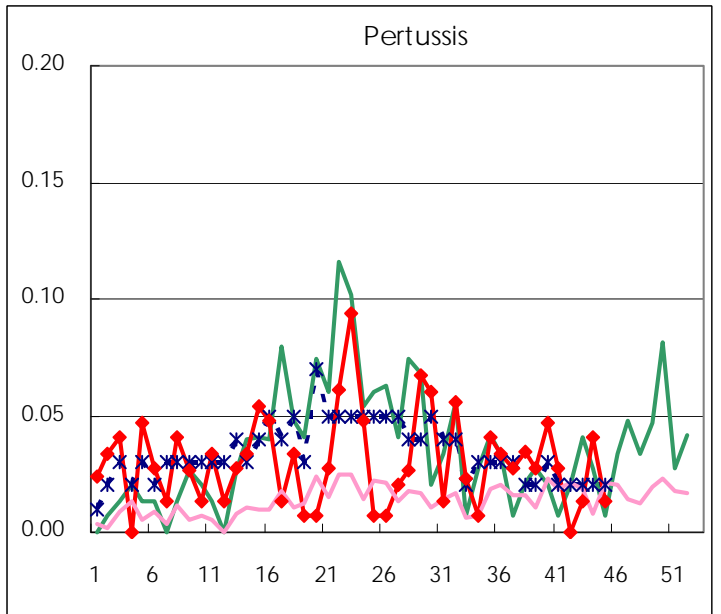
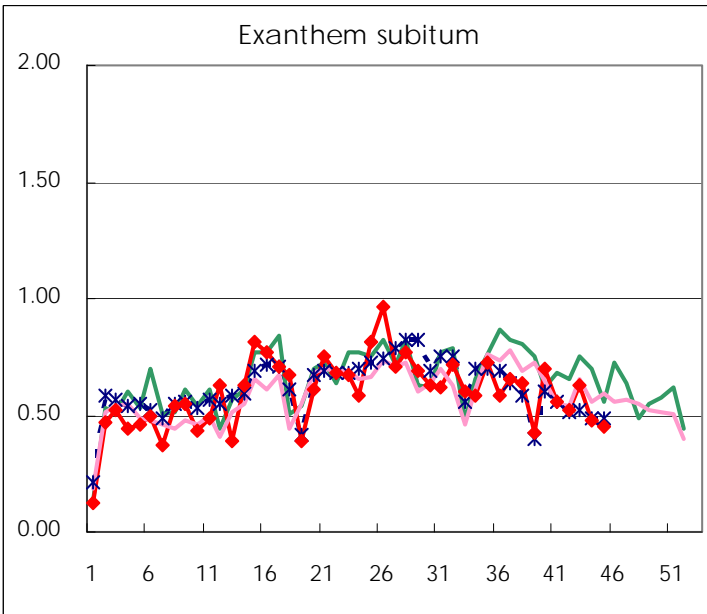
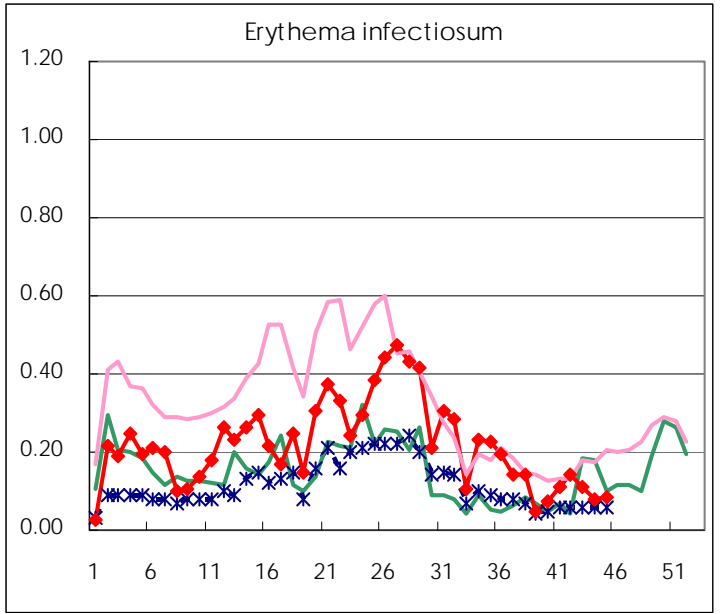
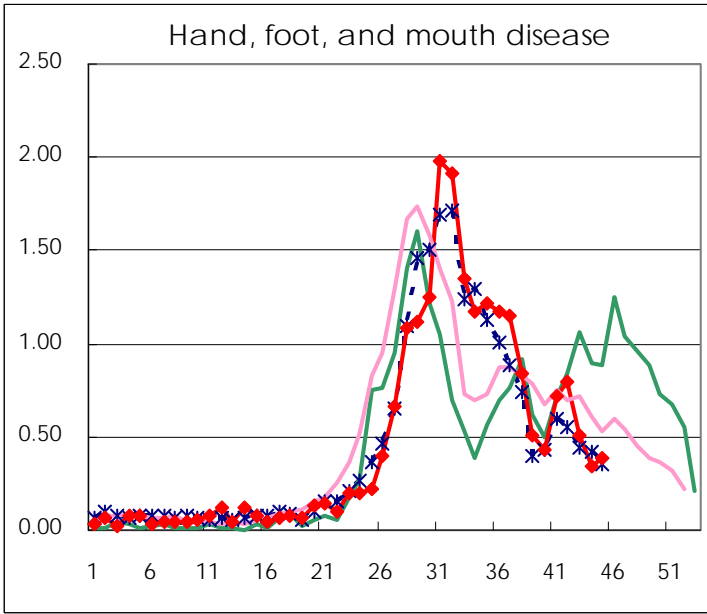
Number of patients with the diseases to be reported
by the designated clinics and hospitals

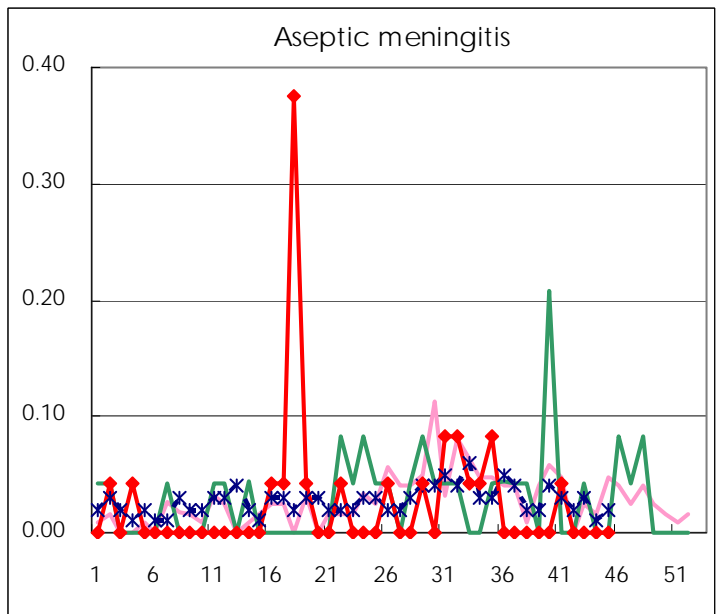
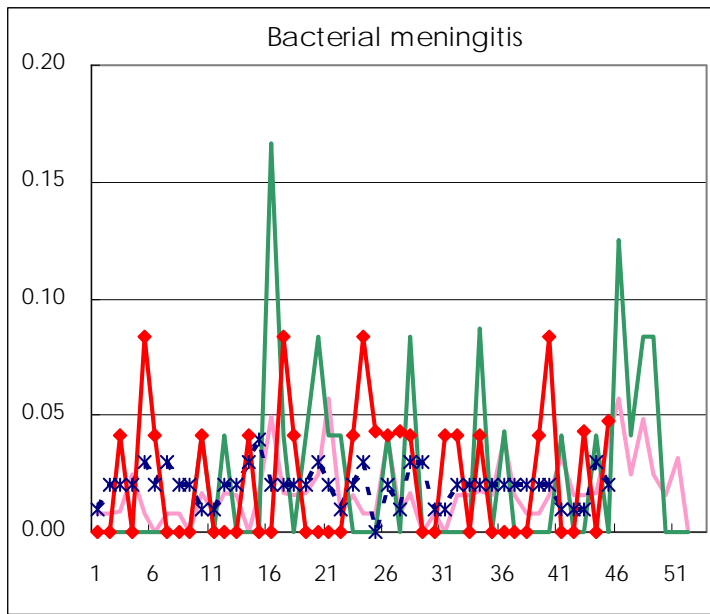
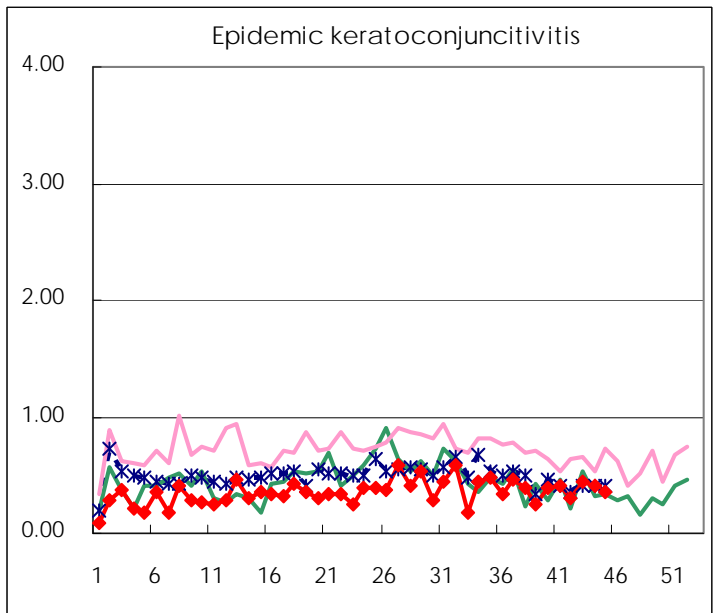
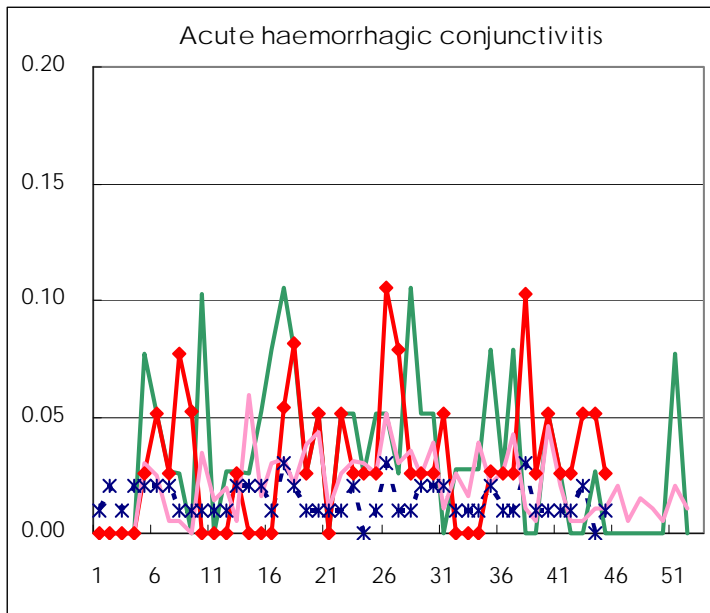
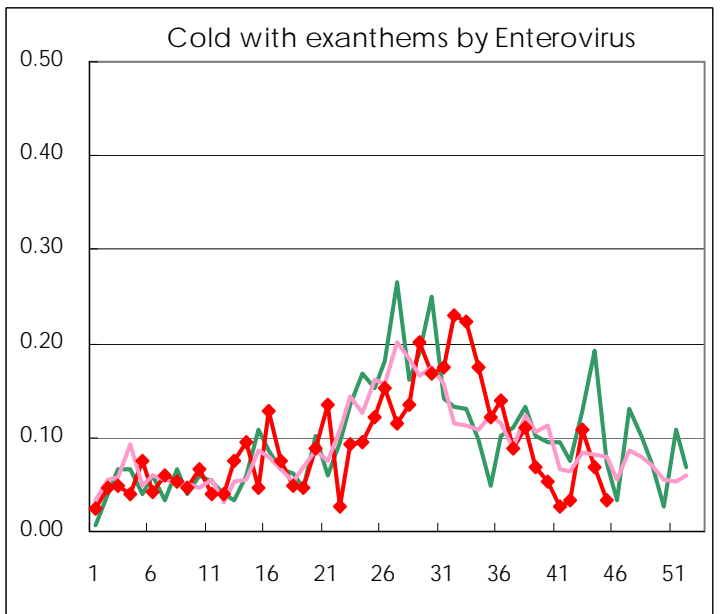
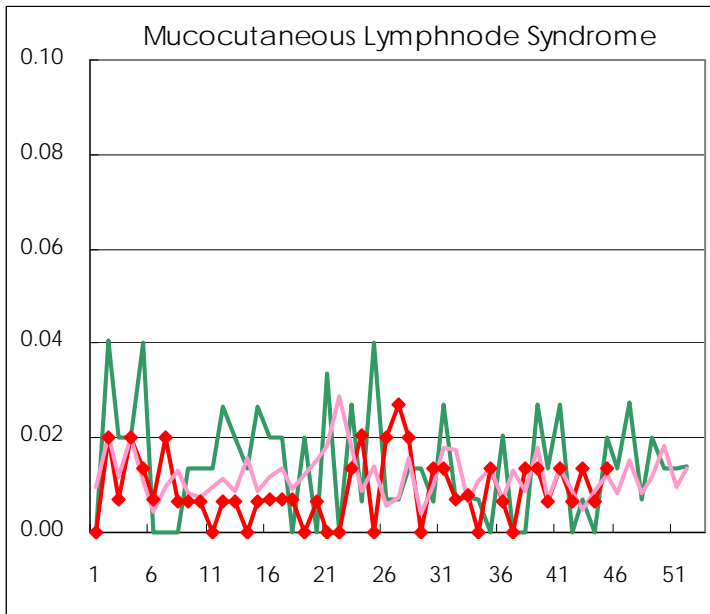
Diseases	2009				
	42nd	43rd	44th	45th	/sentinel
Respiratory syncytial virus infection	12	12	14	16	0.11
Pharyngoconjunctival fever	5	11	5	10	0.07
Group A streptococcal pharyngitis	98	114	132	107	0.73
Infectious gastroenteritis	315	324	324	309	2.10
Chickenpox	47	72	74	77	0.52
Hand, foot, and mouth disease	119	75	50	57	0.39
Erythema infectiosum	21	16	12	12	0.08
Exanthem subitum	78	93	71	66	0.45
Pertussis		2	6	2	0.01
Herpangina	32	29	21	17	0.12
Mumps	81	117	80	83	0.56
Cold with exanthems by Enterovirus	5	16	10	5	0.03
Mucocutaneous Lymphnode Syndrome	1	2	1	2	0.01
Influenza	6,481	7,301	8,073	7,246	25.34
Acute hemorrhagic conjunctivitis	1	2	2	1	0.03
Epidemic keratoconjunctivitis	12	17	16	14	0.36
Bacterial meningitis		1		1	0.05
Aseptic meningitis					
Mycoplasma pneumonia	9	5	5	3	0.14
Chlamydial pneumonia (excluding psittacosis)		2	2		

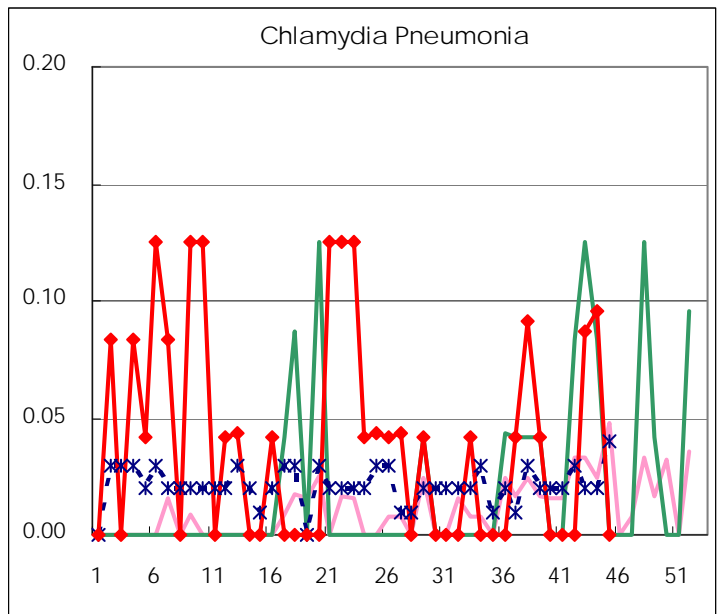
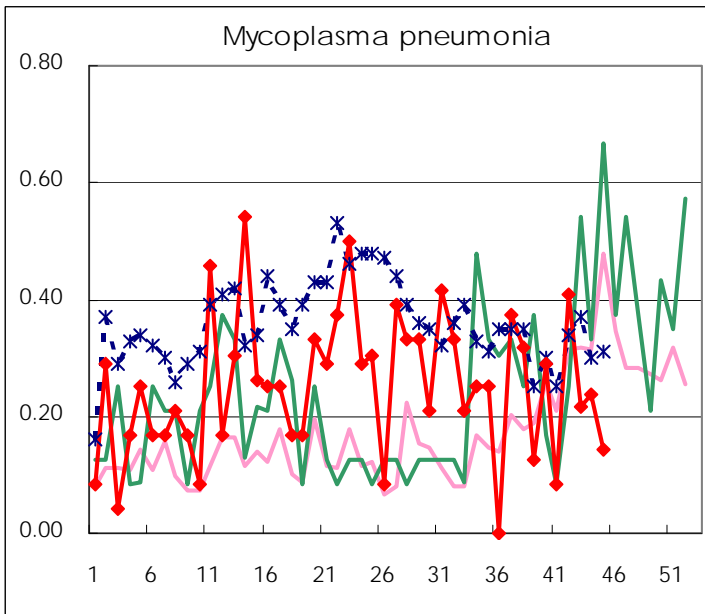
(Blank means 0.)

Disease Trend Graph (weekly reported cases per sentinel in comparison)









Number of sentinel facilities
for weekly reporting

Types of sentinels	Number of sentinels	Sentinels having reported
Pediatric	150	147
Influenza	290	286
Ophthalmic	39	39
Specially-designated	24	21

Tokyo Metropolitan Government
Infectious Disease Surveillance Center