
INFECTIOUS DISEASES WEEKLY REPORT

TOKYO IDWR

Tokyo Metropolitan Infectious Disease Surveillance Center

19 November 2009 / Number 46

Surveillance System in Tokyo, Japan

The infectious diseases which all physicians must report

All physicians must report to health centers the incidence of the diseases which are shown at page one. Health centers electronically report the individual cases to Tokyo Metropolitan Infectious Disease Surveillance Center.

The infectious diseases required to be reported by the sentinels

The numbers of patients who visit the sentinel clinics or hospitals during a week are reported to health centers in Tokyo. And they electronically report the numbers to Tokyo Metropolitan Infectious Disease Surveillance Center. We have about 400 sentinel clinics and hospitals in Tokyo.

1st Week is early January and 52nd Week is end of December.

Tokyo Metropolitan Institute of Public Health
Epidemiological Information Office

TEL:81-3-3363-3213 FAX:81-3-5332-7365

e-mail:idsc@tokyo-eiken.go.jp

URL:idsc.tokyo-eiken.go.jp/

Number of patients with the diseases which all physicians must report

Category	Diseases	Tokyo				Japan		
		43rd	44th	45th	46th	Cum 2009	46th	Cum 2009
I	Ebola hemorrhagic fever							
	Crimean-Congo hemorrhagic fever							
	Smallpox							
	South American hemorrhagic fever							
	Plague							
	Marburg disease							
	Lassa fever							
II	Acute poliomyelitis							
	Tuberculosis	75	58	40	44	3506	246	22690
	Diphtheria							
	Severe Acute Respiratory Syndrome(SARS)							
	Avian influenza H5N1							
III	Cholera	1				3		15
	Shigellosis		1		4	43	6	160
	Enterohemorrhagic Escherichia coli infection	9	7	2	6	295	36	3,571
	Typhoid fever					10	1	26
	Paratyphoid fever					11		22
IV	Hepatitis E					6		46
	West Nile fever							
	Hepatitis A		1	1	1	21	1	104
	Echinococcosis					1		20
	Yellow fever							
	Psittacosis					1		19
	Omsk hemorrhagic fever							
	Relapsing fever							
	Kyasanur forest disease							
	Q fever					1		2
	Rabies							
	Coccidioidomycosis					1		2
	Monkeypox							
	Hemorrhagic fever with renal syndrome							
	Western equine encephalitis							
	Tick-borne encephalitis							
	Anthrax							
	Scrub typhus(Tsutsugamushi disease)				1	4	32	199
	Dengue fever		4	1		31		80
	Eastern equine encephalitis							
	Avian influenza (excluding H5N1)							
	Nipah virus infection							
	Japanese spotted fever						2	112
	Japanese encephalitis							2
	Epidemic typhus							
	Hantavirus pulmonary syndrome							
	Herpes B virus infection							
	Glanders							
	Brucellosis						1	2
	Venezuelan equine encephalitis							
Hendra virus infection								
Botulism								
Malaria	1					25	52	
Tularemia								
Lyme disease						1	7	
Lyssavirus infection(excluding rabies)								
Rift valley fever								
Melioidosis								
Legionellosis		2			2	47	8	591
Leptospirosis								12
Rocky mountain spotted fever								

Category	Diseases	Tokyo				Japan		
		43rd	44th	45th	46th	Cum 2009	46th	Cum 2009
V	Amebiasis	2	3	4	1	124	7	672
	Viral hepatitis(excluding hepatitis A and E)	1	1			31	1	191
	Acute encephalitis(excluding JE and WNE)	7	1	1	1	36	13	333
	Cryptosporidiosis				1	3		15
	Creutzfeldt-Jakob disease			2	1	15	4	120
	Severe invasive streptococcal infections(TSLS)					9		90
	Acquired immunodeficiency syndrome (AIDS)	8	5	8	7	414	12	1,232
	Giardiasis	1	1			21	1	66
	Meningococcal meningitis					1		9
	Congenital rubella syndrome							1
	Syphilis	2	4	4	2	173	9	601
	Tetanus				1	7	1	104
	Vancomycin-resistant S. aureus infection							
	Vancomycin-resistant Enterococcus infection					12	2	91
	Rubella	1				18		139
Measles	1		4	2	108	4	702	
Novel Flu	Novel influenza (swine-origin influenza A/H1N1) *	—	—	—	—	1187	—	**5038

* laboratory confirmed cases and suspected cases

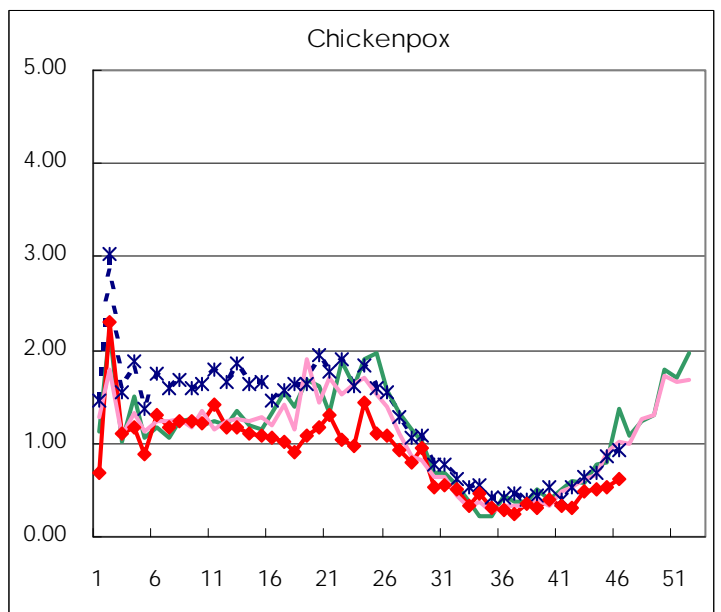
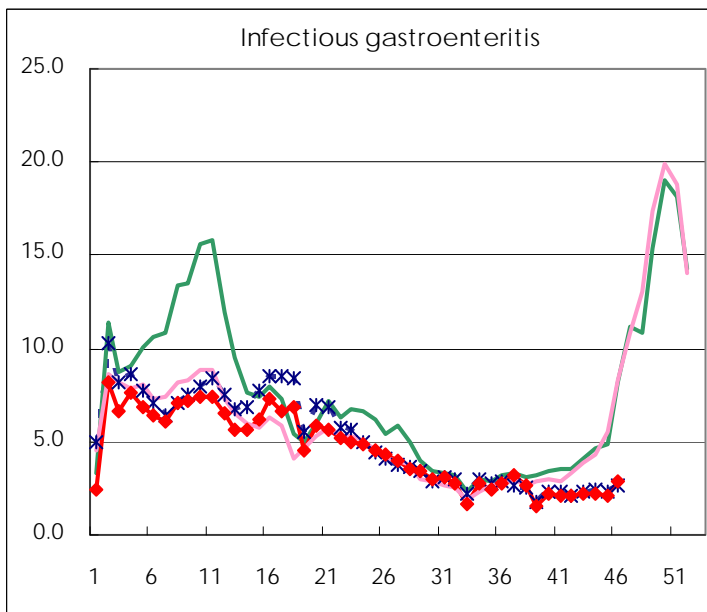
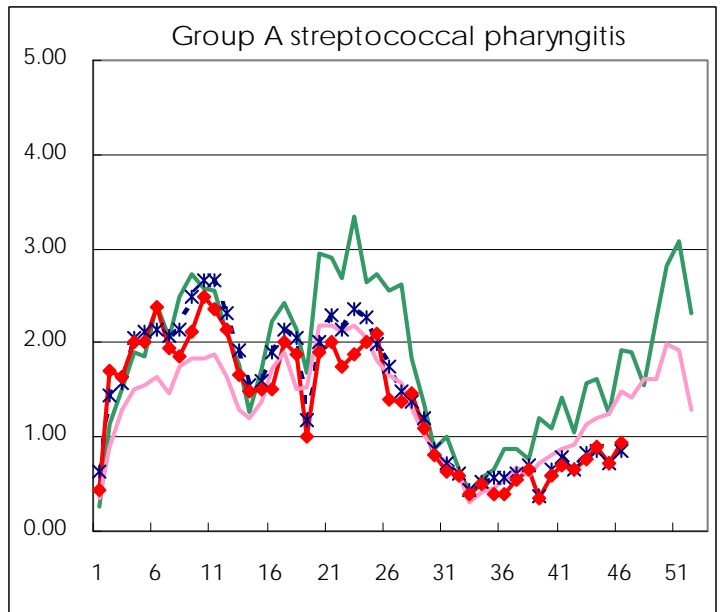
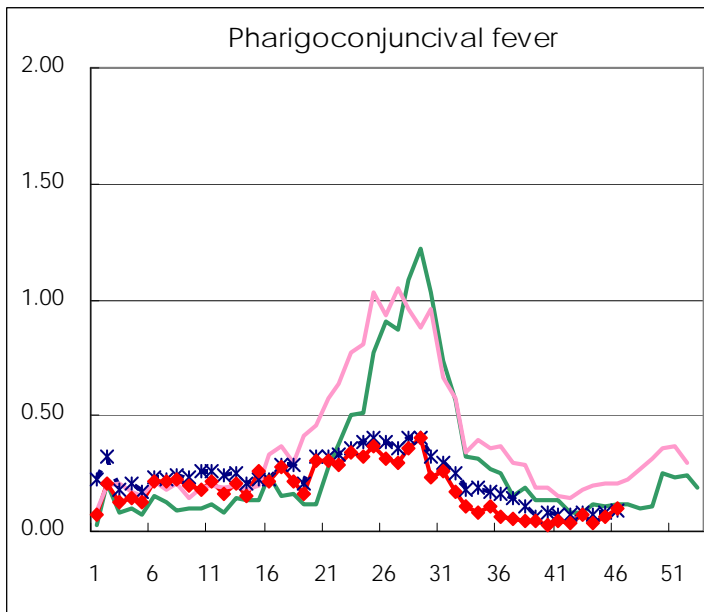
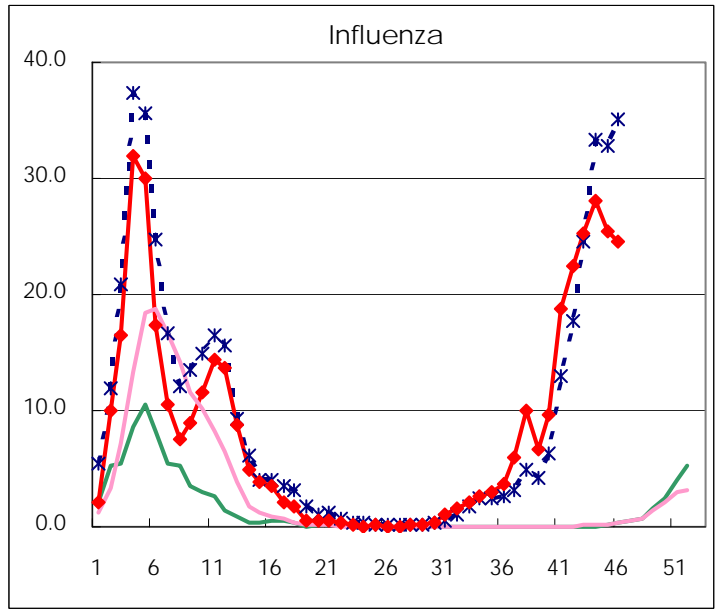
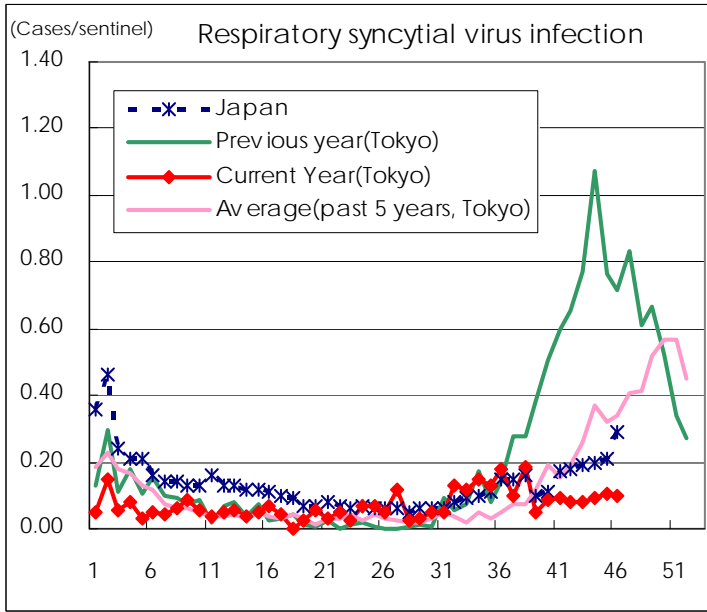
** As of July 24

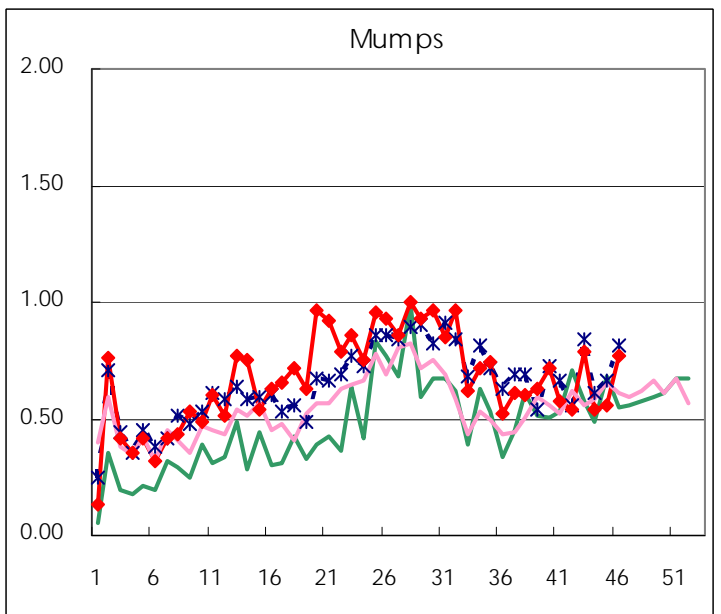
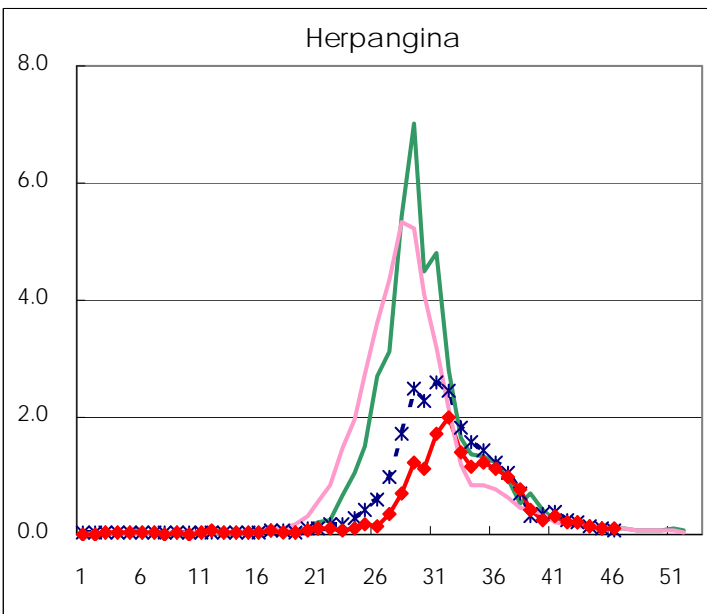
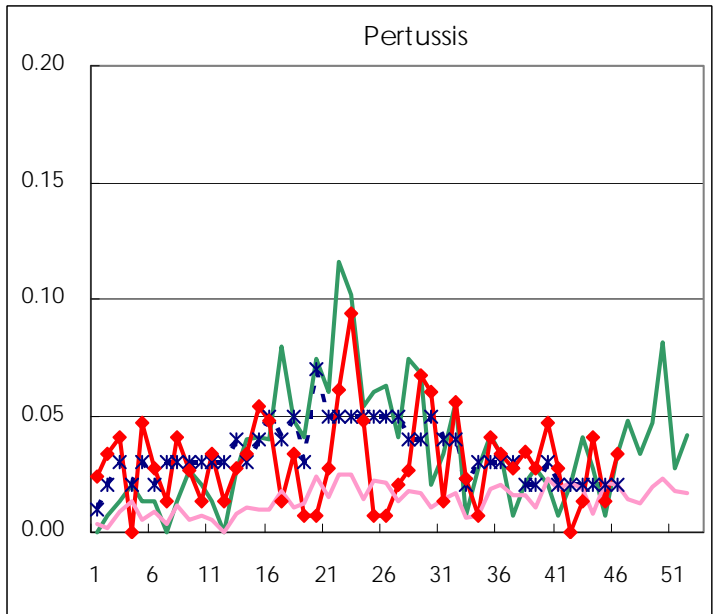
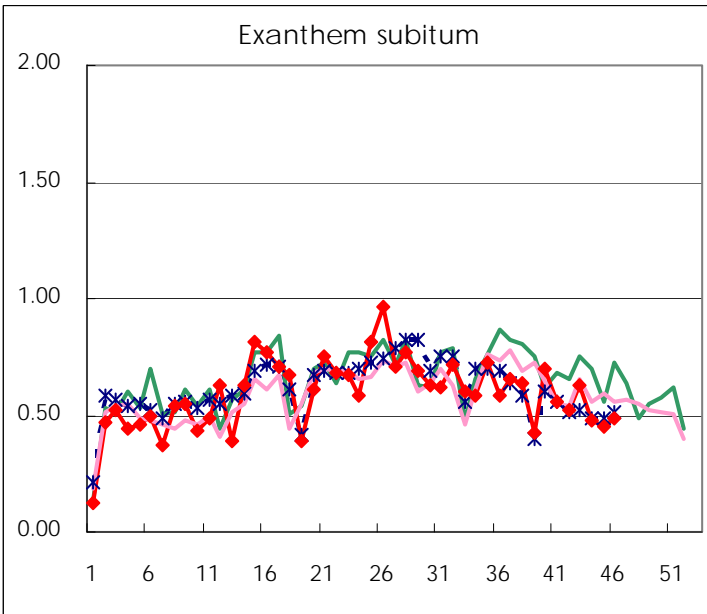
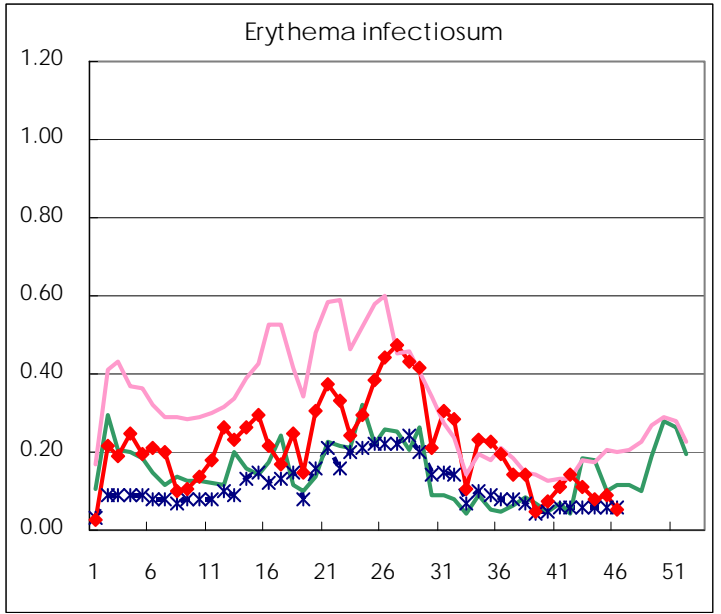
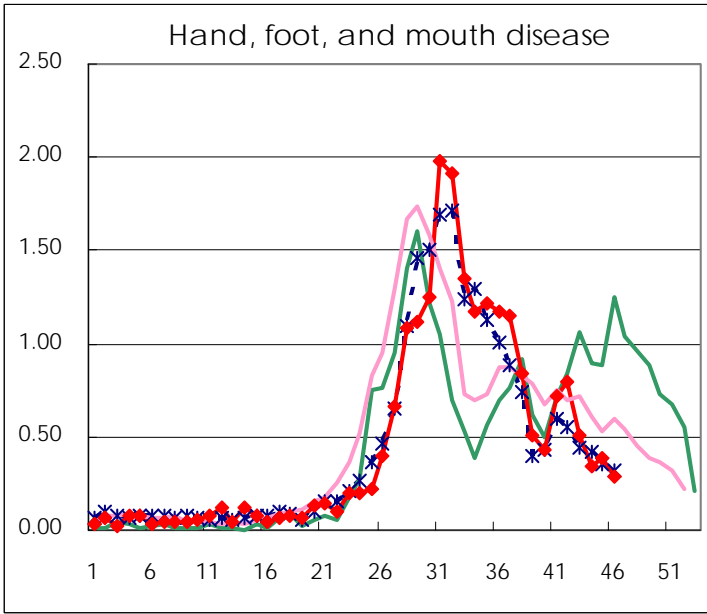
Number of patients with the diseases to be reported
by the designated clinics and hospitals

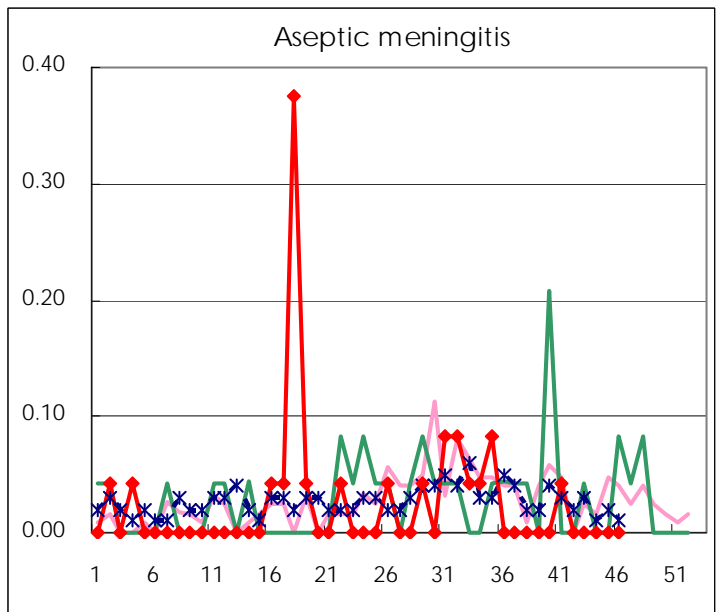
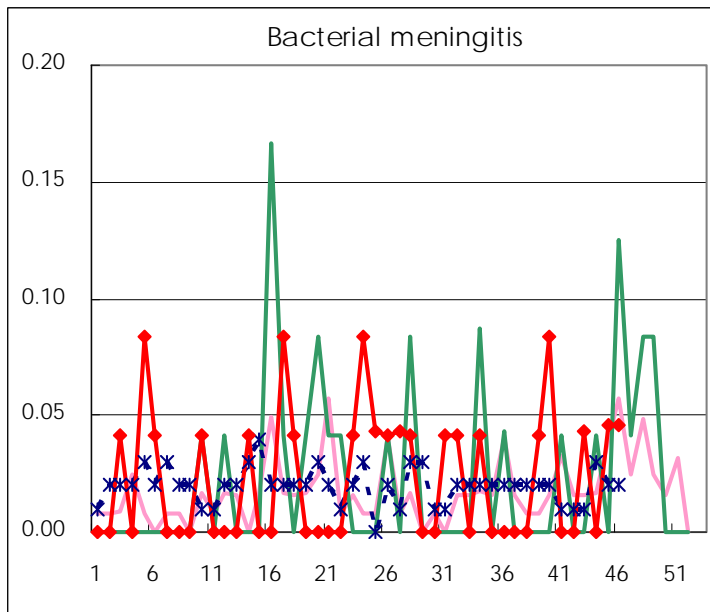
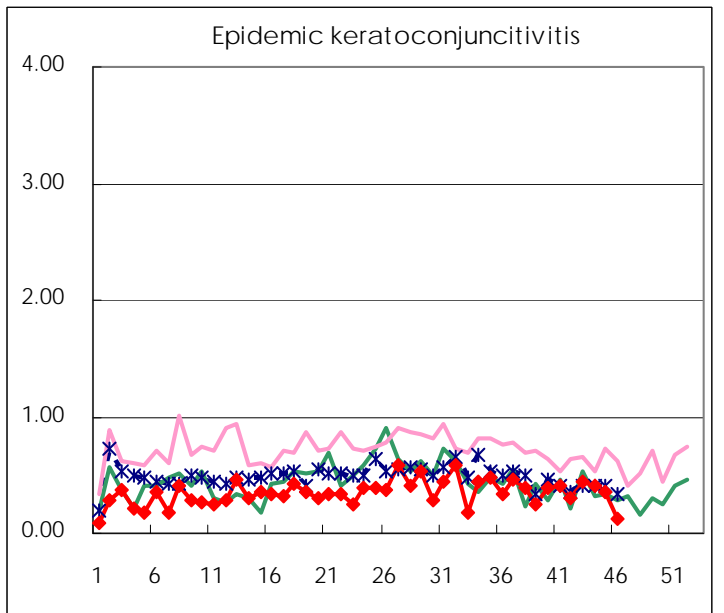
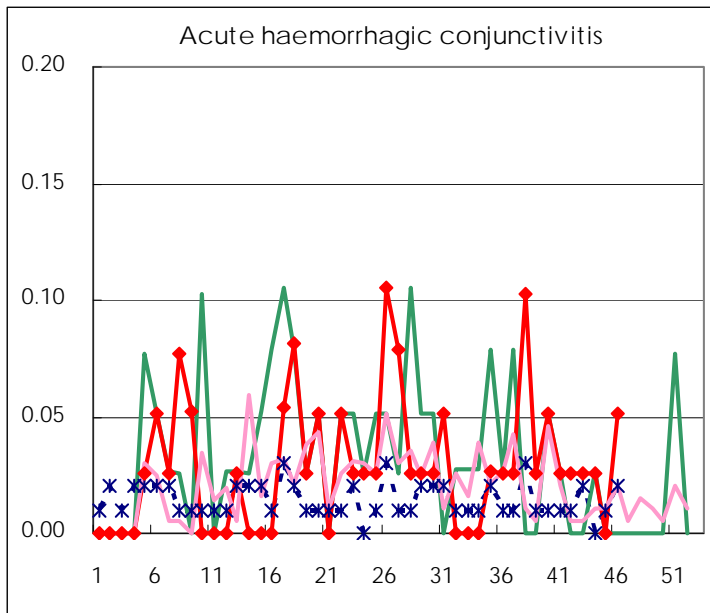
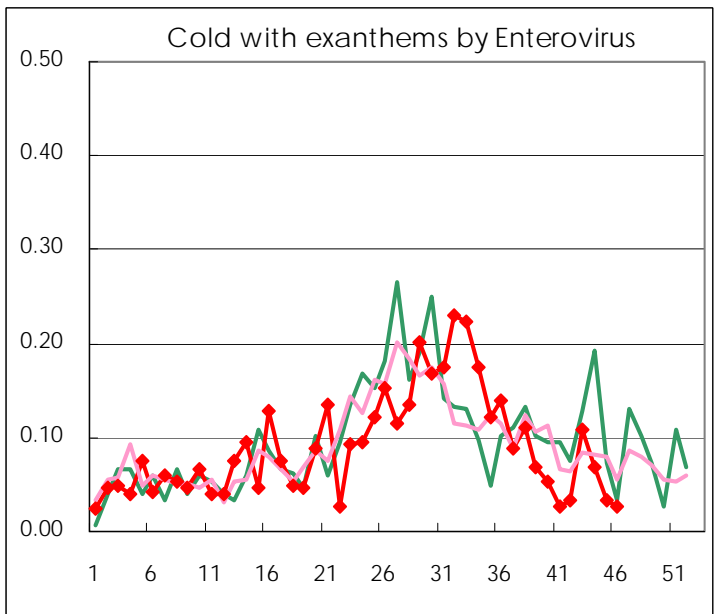
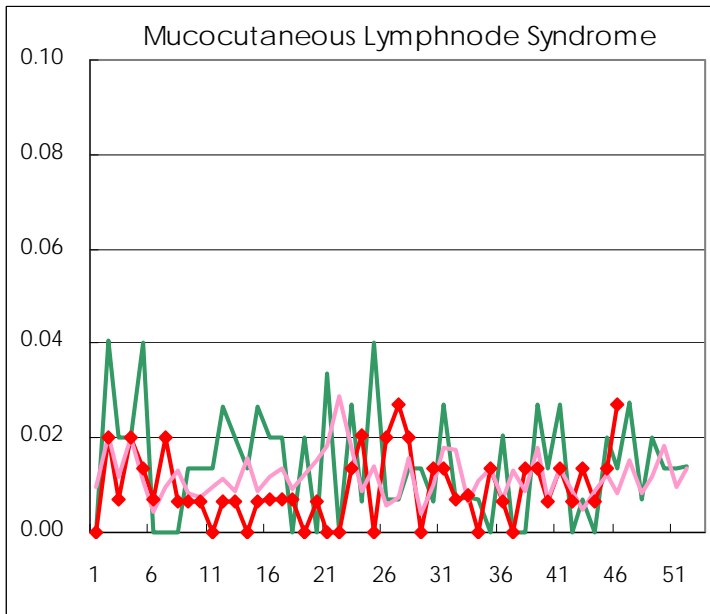
Diseases	2009				
	43rd	44th	45th	46th	/sentinel
Respiratory syncytial virus infection	12	14	16	15	0.10
Pharyngoconjunctival fever	11	5	10	14	0.09
Group A streptococcal pharyngitis	114	132	107	138	0.93
Infectious gastroenteritis	324	324	309	431	2.91
Chickenpox	72	74	78	93	0.63
Hand, foot, and mouth disease	75	50	57	42	0.28
Erythema infectiosum	16	12	13	8	0.05
Exanthem subitum	93	71	67	72	0.49
Pertussis	2	6	2	5	0.03
Herpangina	29	21	17	15	0.10
Mumps	117	80	83	114	0.77
Cold with exanthems by Enterovirus	16	10	5	4	0.03
Mucocutaneous Lymphnode Syndrome	2	1	2	4	0.03
Influenza	7,301	8,073	7,330	7,076	24.57
Acute hemorrhagic conjunctivitis	1	1		2	0.05
Epidemic keratoconjunctivitis	17	16	14	5	0.13
Bacterial meningitis	1		1	1	0.05
Aseptic meningitis					
Mycoplasma pneumonia	5	5	3	7	0.32
Chlamydial pneumonia (excluding psittacosis)	2	2		1	0.05

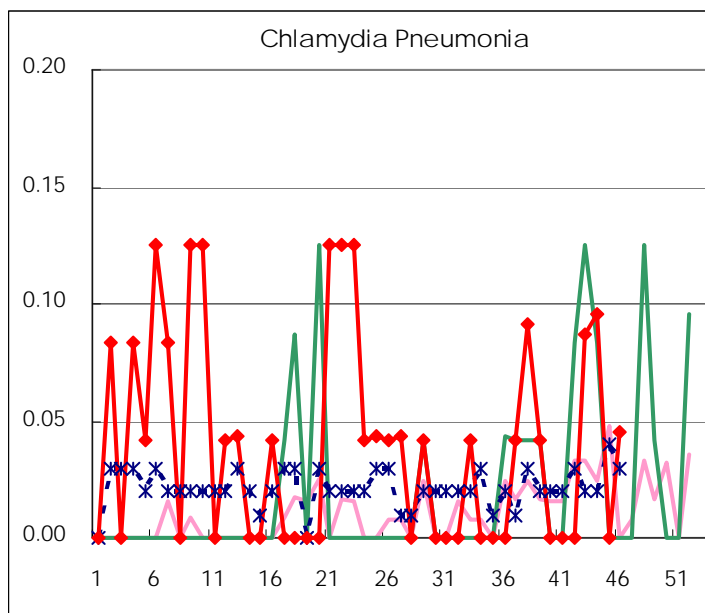
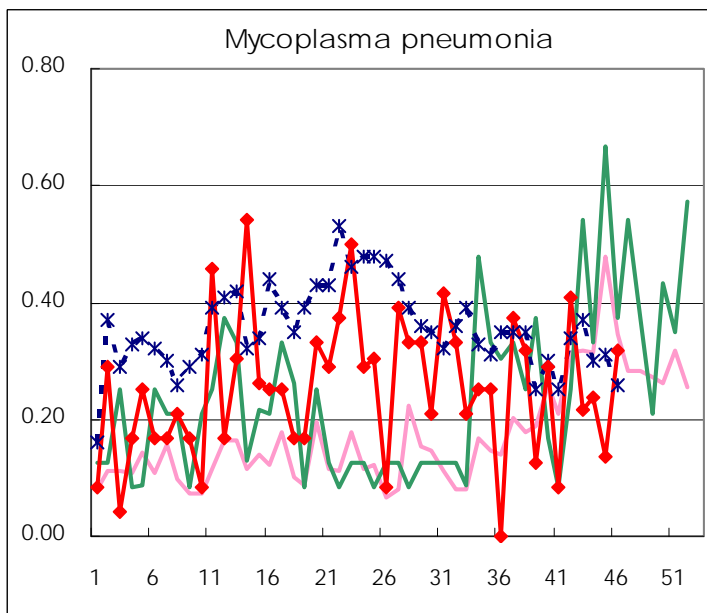
(Blank means 0.)

Disease Trend Graph (weekly reported cases per sentinel in comparison)









Number of sentinel facilities
for weekly reporting

Types of sentinels	Number of sentinels	Sentinels having reported
Pediatric	150	148
Influenza	290	288
Ophthalmic	39	39
Specially-designated	24	22

Tokyo Metropolitan Government
Infectious Disease Surveillance Center