
INFECTIOUS DISEASES WEEKLY REPORT

TOKYO IDWR

Tokyo Metropolitan Infectious Disease Surveillance Center

26 November 2009 / Number 47

Surveillance System in Tokyo, Japan

The infectious diseases which all physicians must report

All physicians must report to health centers the incidence of the diseases which are shown at page one. Health centers electronically report the individual cases to Tokyo Metropolitan Infectious Disease Surveillance Center.

The infectious diseases required to be reported by the sentinels

The numbers of patients who visit the sentinel clinics or hospitals during a week are reported to health centers in Tokyo. And they electronically report the numbers to Tokyo Metropolitan Infectious Disease Surveillance Center. We have about 400 sentinel clinics and hospitals in Tokyo.

1st Week is early January and 52nd Week is end of December.

Tokyo Metropolitan Institute of Public Health
Epidemiological Information Office

TEL:81-3-3363-3213 FAX:81-3-5332-7365

e-mail:idsc@tokyo-eiken.go.jp

URL:idsc.tokyo-eiken.go.jp/

Number of patients with the diseases which all physicians must report

Category	Diseases	Tokyo				Cum 2009	Japan	
		44th	45th	46th	47th		47th	Cum 2009
I	Ebola hemorrhagic fever							
	Crimean-Congo hemorrhagic fever							
	Smallpox							
	South American hemorrhagic fever							
	Plague							
	Marburg disease							
	Lassa fever							
II	Acute poliomyelitis							
	Tuberculosis	63	46	70	49	3629	235	23135
	Diphtheria							
	Severe Acute Respiratory Syndrome(SARS)							
	Avian influenza H5N1							
III	Cholera					3	1	16
	Shigellosis	1		4		43		166
	Enterohemorrhagic Escherichia coli infection	7	2	6	3	298	26	3,618
	Typhoid fever					10	1	27
	Paratyphoid fever					11	1	24
IV	Hepatitis E					6	1	47
	West Nile fever							
	Hepatitis A	1	1	1	1	22	2	107
	Echinococcosis					1		21
	Yellow fever							
	Psittacosis					1		20
	Omsk hemorrhagic fever							
	Relapsing fever							
	Kyasanur forest disease							
	Q fever					1		2
	Rabies							
	Coccidioidomycosis					1		2
	Monkeypox							
	Hemorrhagic fever with renal syndrome							
	Western equine encephalitis							
	Tick-borne encephalitis							
	Anthrax							
	Scrub typhus(Tsutsugamushi disease)			1		4	23	236
	Dengue fever	4	1			31	1	84
	Eastern equine encephalitis							
	Avian influenza (excluding H5N1)							
	Nipah virus infection							
	Japanese spotted fever						3	117
	Japanese encephalitis							2
	Epidemic typhus							
	Hantavirus pulmonary syndrome							
	Herpes B virus infection							
	Glanders							
	Brucellosis						1	2
	Venezuelan equine encephalitis							
Hendra virus infection								
Botulism								
Malaria						25	1	52
Tularemia								
Lyme disease						1		7
Lyssavirus infection(excluding rabies)								
Rift valley fever								
Melioidosis								
Legionellosis	2		2	1	48	9	604	
Leptospirosis							12	
Rocky mountain spotted fever								

Category	Diseases	Tokyo					Japan	
		44th	45th	46th	47th	Cum 2009	47th	Cum 2009
V	Amebiasis	3	4	1	1	125	6	684
	Viral hepatitis(excluding hepatitis A and E)	1			1	32	2	195
	Acute encephalitis(excluding JE and WNE)	1	1	1	3	39	11	351
	Cryptosporidiosis			1		3		16
	Creutzfeldt-Jakob disease		2	1	2	17	3	126
	Severe invasive streptococcal infections(TSLS)					9		90
	Acquired immunodeficiency syndrome (AIDS)	5	8	7	14	428	17	1,263
	Giardiasis	1			1	22	1	68
	Meningococcal meningitis					1		9
	Congenital rubella syndrome							1
	Syphilis	4	4	2	2	175	3	610
	Tetanus			1		7		106
	Vancomycin-resistant S. aureus infection							
	Vancomycin-resistant Enterococcus infection	1				13		95
	Rubella					18		140
Measles		4	2	2	110	4	708	
Novel Flu	Novel influenza (swine-origin influenza A/H1N1) *	—	—	—	—	1187	—	**5038

* laboratory confirmed cases and suspected cases

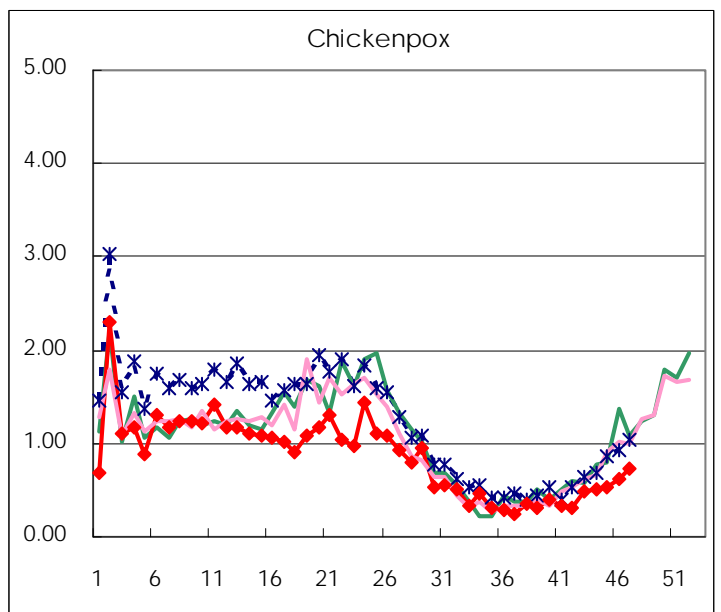
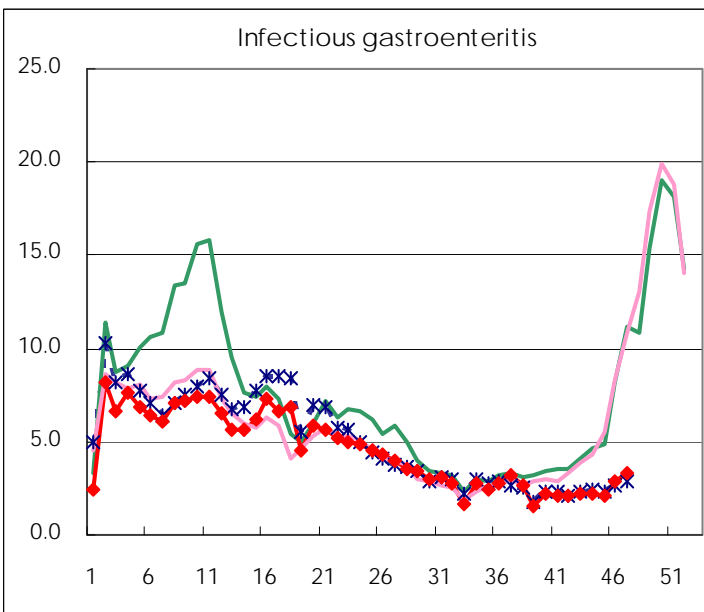
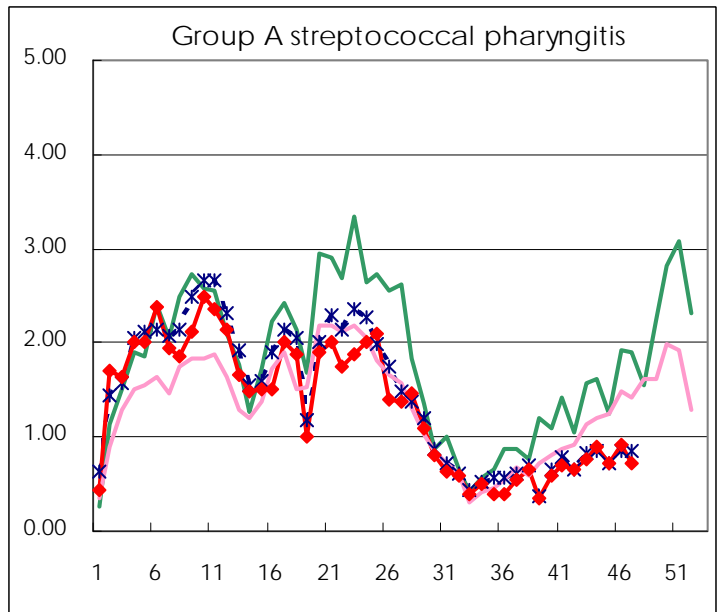
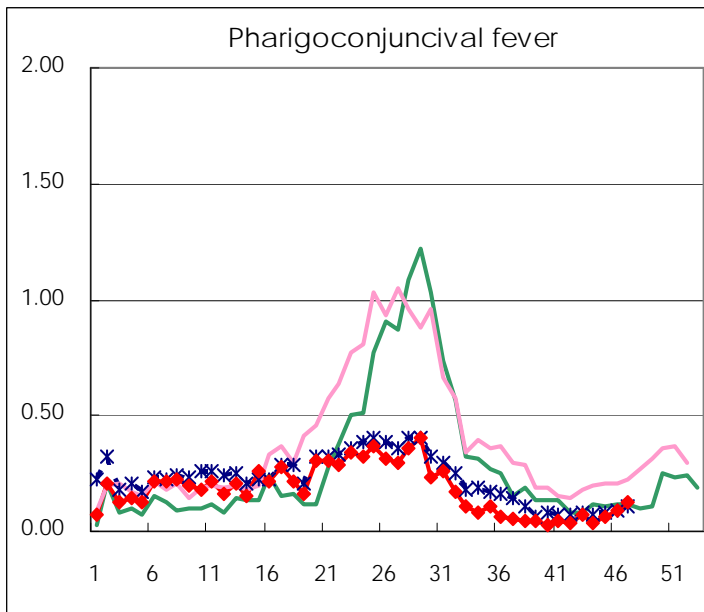
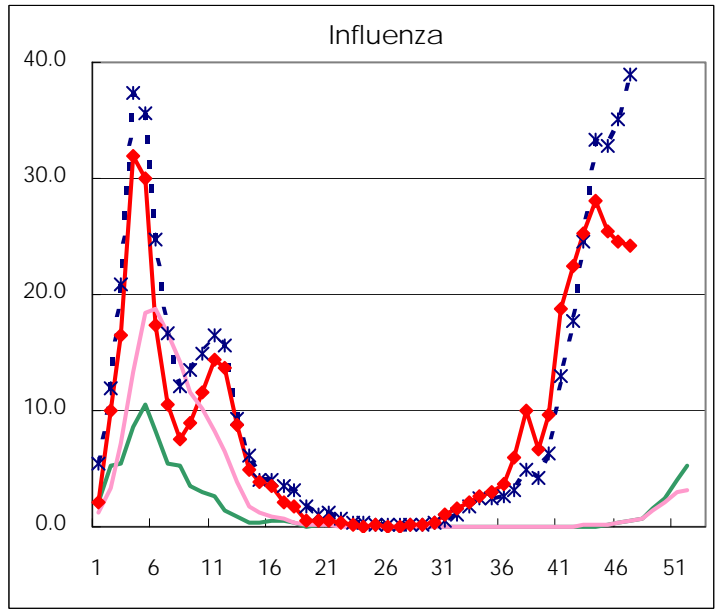
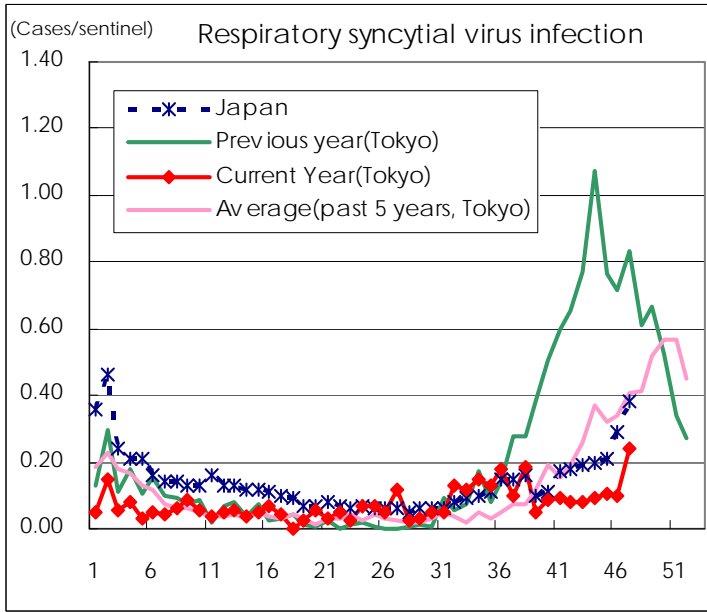
** As of July 24

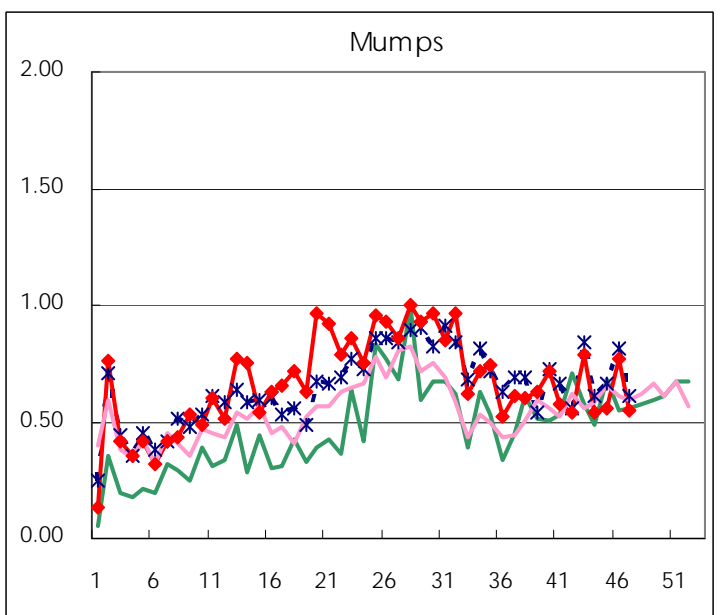
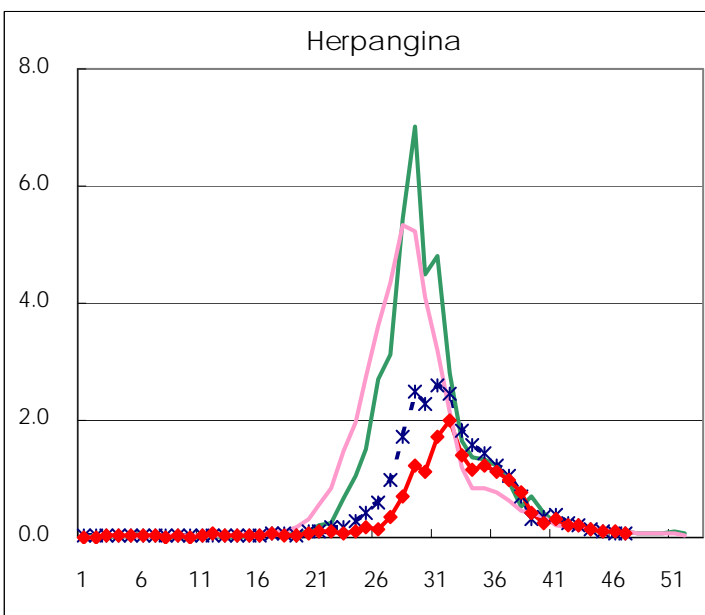
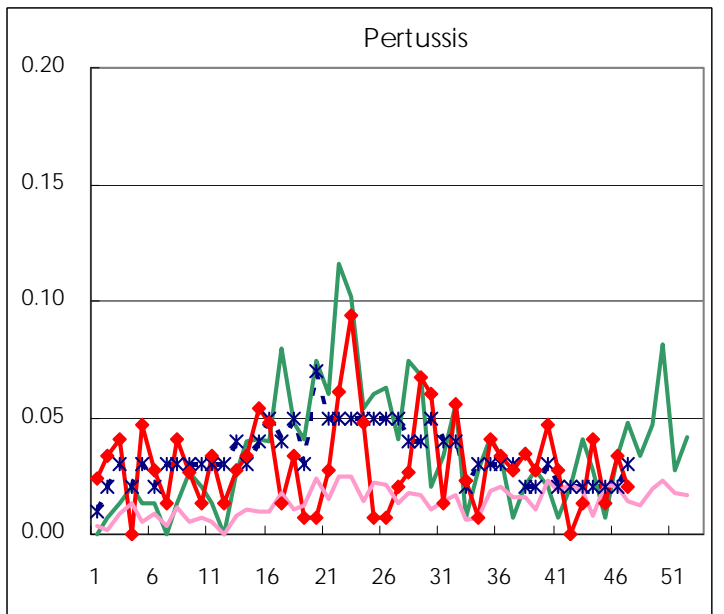
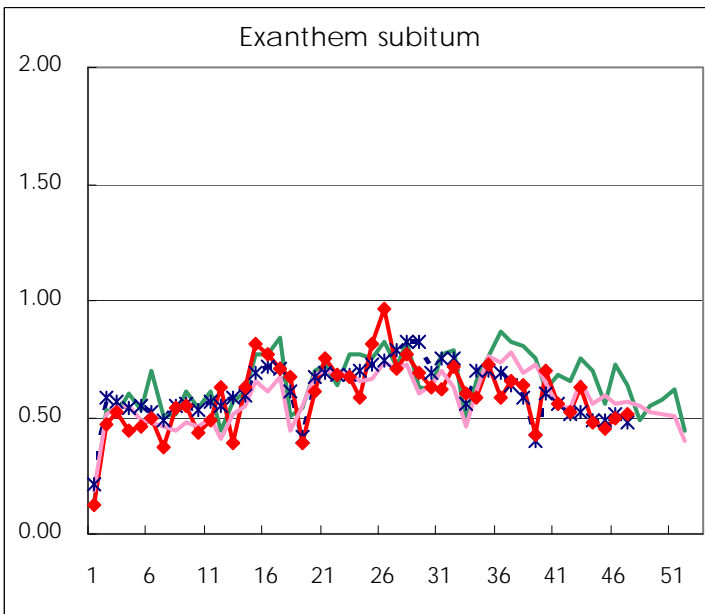
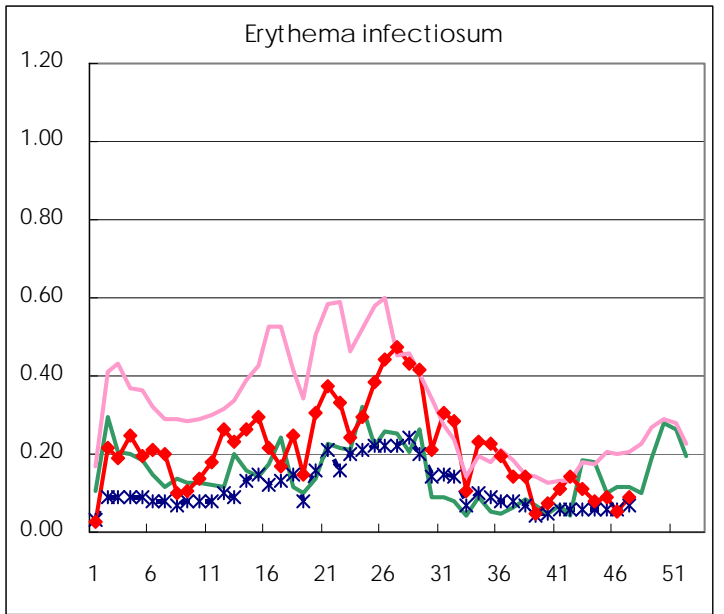
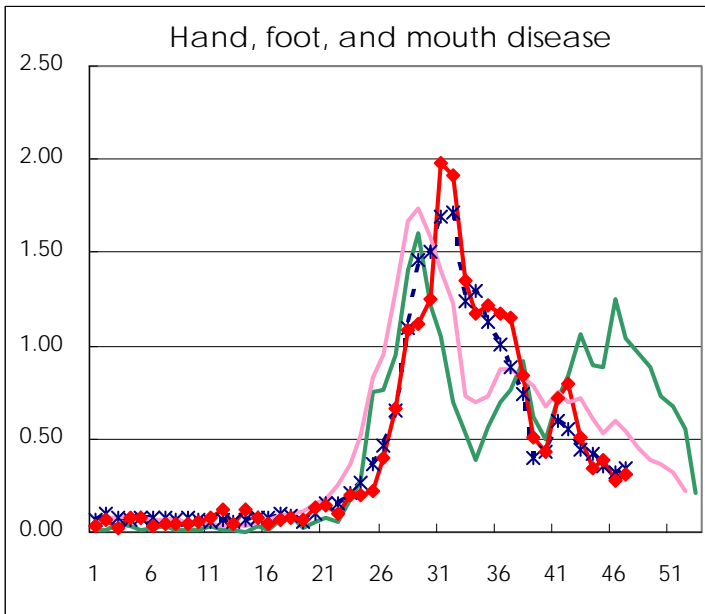
Number of patients with the diseases to be reported
by the designated clinics and hospitals

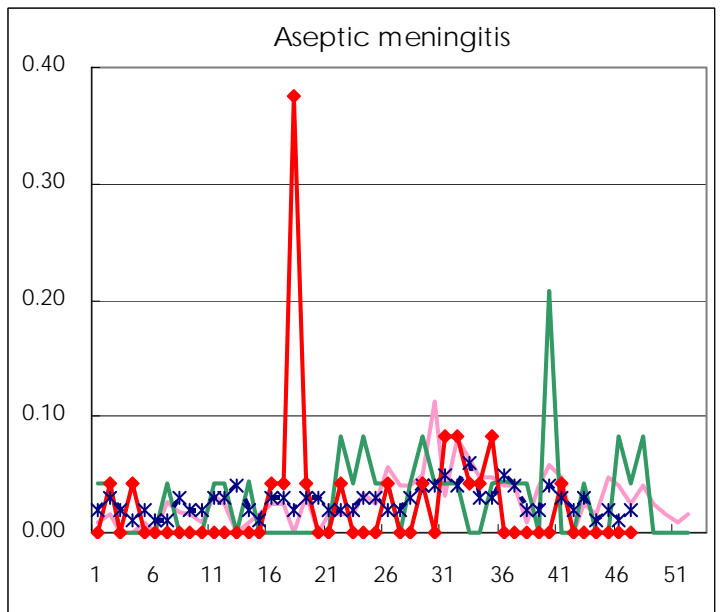
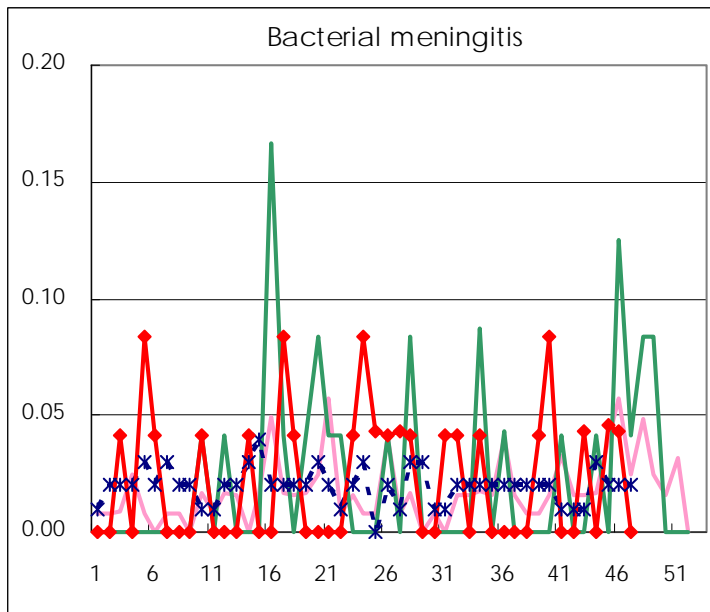
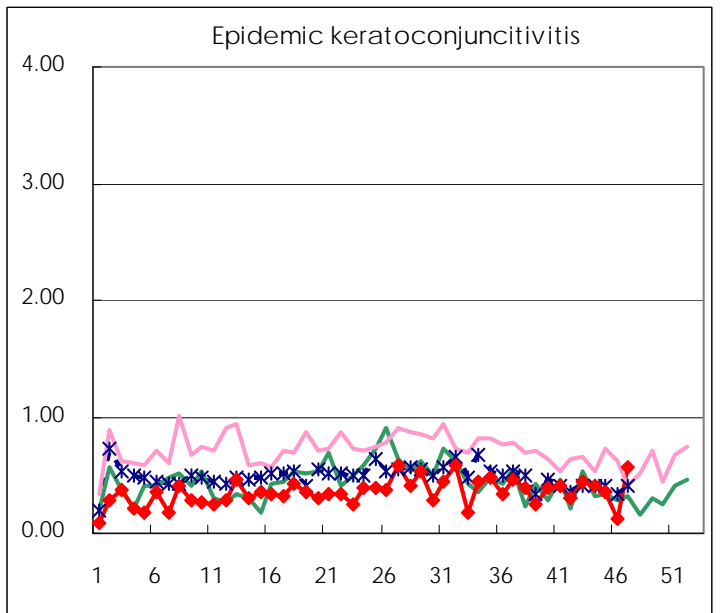
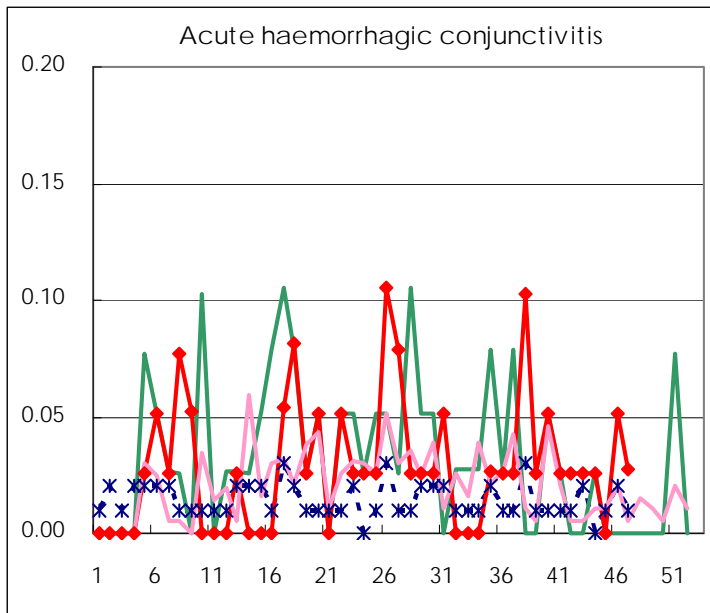
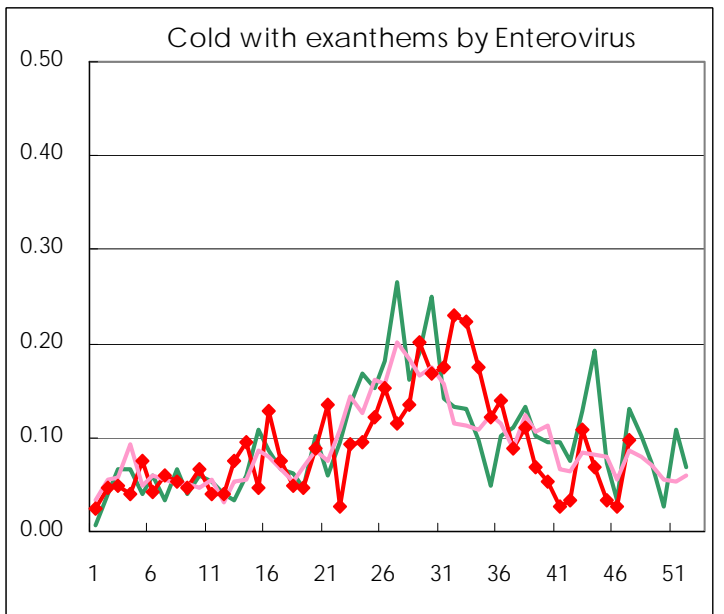
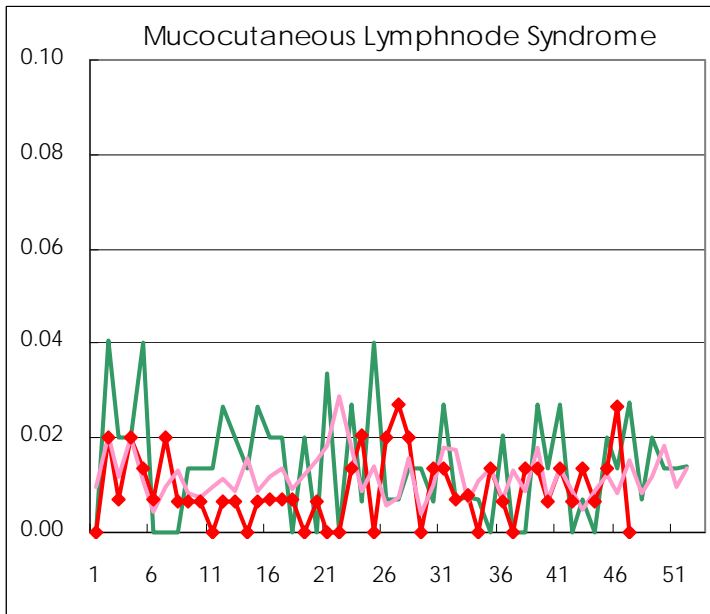
Diseases	2009				
	44th	45th	46th	47th	/sentinel
Respiratory syncytial virus infection	14	16	15	35	0.24
Pharyngoconjunctival fever	5	10	14	18	0.12
Group A streptococcal pharyngitis	132	107	138	105	0.72
Infectious gastroenteritis	324	309	431	474	3.27
Chickenpox	74	78	93	107	0.74
Hand, foot, and mouth disease	50	57	42	45	0.31
Erythema infectiosum	12	13	8	13	0.09
Exanthem subitum	71	67	74	75	0.52
Pertussis	6	2	5	3	0.02
Herpangina	21	17	15	11	0.08
Mumps	80	83	115	79	0.54
Cold with exanthems by Enterovirus	10	5	4	14	0.10
Mucocutaneous Lymphnode Syndrome	1	2	4		
Influenza	8,073	7,330	7,119	6,881	24.14
Acute hemorrhagic conjunctivitis	1		2	1	0.03
Epidemic keratoconjunctivitis	16	14	5	21	0.57
Bacterial meningitis		1	1		
Aseptic meningitis					
Mycoplasma pneumonia	5	3	7	3	0.13
Chlamydial pneumonia (excluding psittacosis)	2		1		

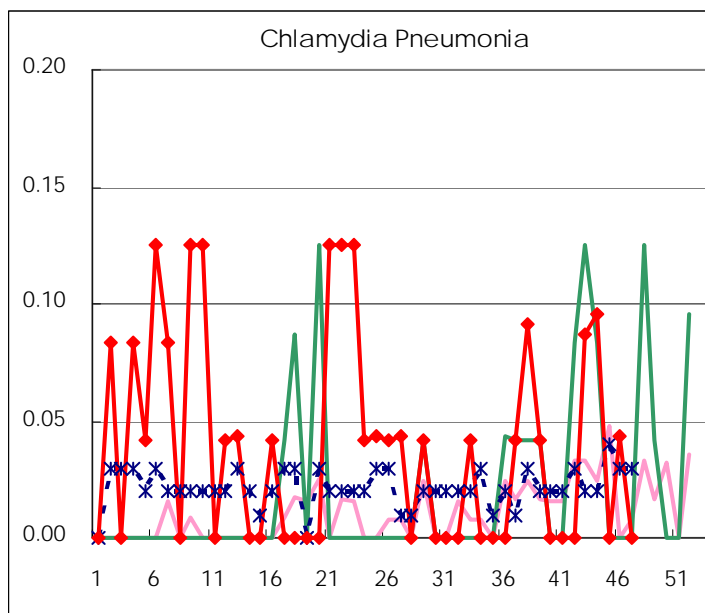
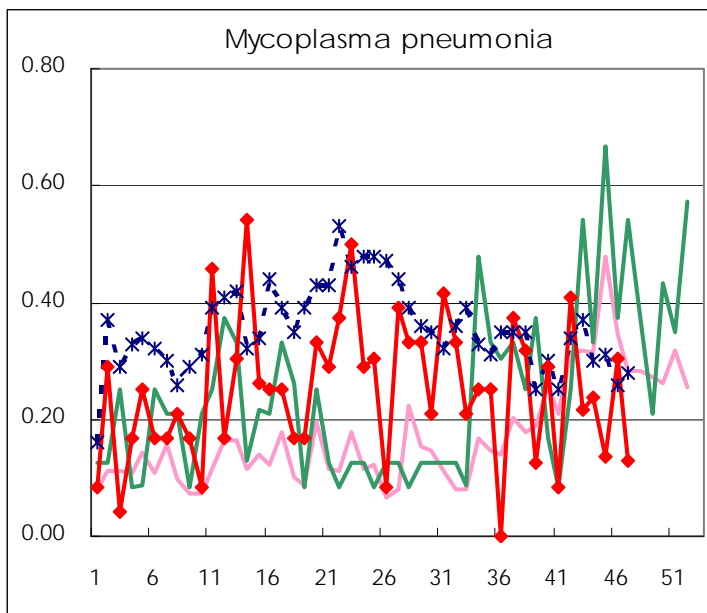
(Blank means 0.)

Disease Trend Graph (weekly reported cases per sentinel in comparison)









Number of sentinel facilities for weekly reporting

Types of sentinels	Number of sentinels	Sentinels having reported
Pediatric	150	145
Influenza	290	285
Ophthalmic	39	37
Specially-designated	24	23

Tokyo Metropolitan Government
Infectious Disease Surveillance Center