
INFECTIOUS DISEASES WEEKLY REPORT

TOKYO IDWR

Tokyo Metropolitan Infectious Disease Surveillance Center

3 December 2009 / Number 48

Surveillance System in Tokyo, Japan

The infectious diseases which all physicians must report

All physicians must report to health centers the incidence of the diseases which are shown at page one. Health centers electronically report the individual cases to Tokyo Metropolitan Infectious Disease Surveillance Center.

The infectious diseases required to be reported by the sentinels

The numbers of patients who visit the sentinel clinics or hospitals during a week are reported to health centers in Tokyo. And they electronically report the numbers to Tokyo Metropolitan Infectious Disease Surveillance Center. We have about 400 sentinel clinics and hospitals in Tokyo.

1st Week is early January and 52nd Week is end of December.

Tokyo Metropolitan Institute of Public Health
Epidemiological Information Office

TEL:81-3-3363-3213 FAX:81-3-5332-7365
e-mail:idsc@tokyo-eiken.go.jp
URL:idsc.tokyo-eiken.go.jp/

Number of patients with the diseases which all physicians must report

Category	Diseases	Tokyo				Japan		
		45th	46th	47th	48th	Cum 2009	48th	Cum 2009
I	Ebola hemorrhagic fever							
	Crimean-Congo hemorrhagic fever							
	Smallpox							
	South American hemorrhagic fever							
	Plague							
	Marburg disease							
	Lassa fever							
II	Acute poliomyelitis							
	Tuberculosis	47	74	61	40	3701	238	23710
	Diphtheria							
	Severe Acute Respiratory Syndrome(SARS)							
Avian influenza H5N1								
III	Cholera					3		16
	Shigellosis		4		1	44	2	168
	Enterohemorrhagic Escherichia coli infection	2	6	3	3	301	35	3,668
	Typhoid fever					10	1	28
	Paratyphoid fever					11		24
IV	Hepatitis E					6		47
	West Nile fever							
	Hepatitis A	1	1	1		22		106
	Echinococcosis					1		22
	Yellow fever							
	Psittacosis					1		20
	Omsk hemorrhagic fever							
	Relapsing fever							
	Kyasanur forest disease							
	Q fever					1		2
	Rabies							
	Coccidioidomycosis					1		2
	Monkeypox							
	Hemorrhagic fever with renal syndrome							
	Western equine encephalitis							
	Tick-borne encephalitis							
	Anthrax							
	Scrub typhus(Tsutsugamushi disease)		1			4	20	277
	Dengue fever	1			1	32	1	86
	Eastern equine encephalitis							
	Avian influenza (excluding H5N1)							
	Nipah virus infection							
	Japanese spotted fever							118
	Japanese encephalitis							2
	Epidemic typhus							
	Hantavirus pulmonary syndrome							
	Herpes B virus infection							
	Glanders							
	Brucellosis						1	2
	Venezuelan equine encephalitis							
Hendra virus infection								
Botulism								
Malaria						25	52	
Tularemia								
Lyme disease						1	7	
Lyssavirus infection(excluding rabies)								
Rift valley fever								
Melioidosis								
Legionellosis		2	1	1	49	18	625	
Leptospirosis							11	
Rocky mountain spotted fever								

Category	Diseases	Tokyo					Japan	
		45th	46th	47th	48th	Cum 2009	48th	Cum 2009
V	Amebiasis	4	1	1	2	127	4	693
	Viral hepatitis(excluding hepatitis A and E)			1		32	1	198
	Acute encephalitis(excluding JE and WNE)	1	1	3	2	41	14	393
	Cryptosporidiosis		1		1	4		16
	Creutzfeldt-Jakob disease	2	1	2		17	1	129
	Severe invasive streptococcal infections(TSLS)					9	1	96
	Acquired immunodeficiency syndrome (AIDS)	8	7	14	6	434	5	1,274
	Giardiasis			1		22		68
	Meningococcal meningitis					1	1	10
	Congenital rubella syndrome							1
	Syphilis	4	2	2	1	176	5	616
	Tetanus		1			7		106
	Vancomycin-resistant S. aureus infection							
	Vancomycin-resistant Enterococcus infection					13		94
	Rubella					18		141
Measles	4	2	2		110	3	712	
Novel Flu	Novel influenza (swine-origin influenza A/H1N1) *	—	—	—	—	1187	—	**5038

* laboratory confirmed cases and suspected cases

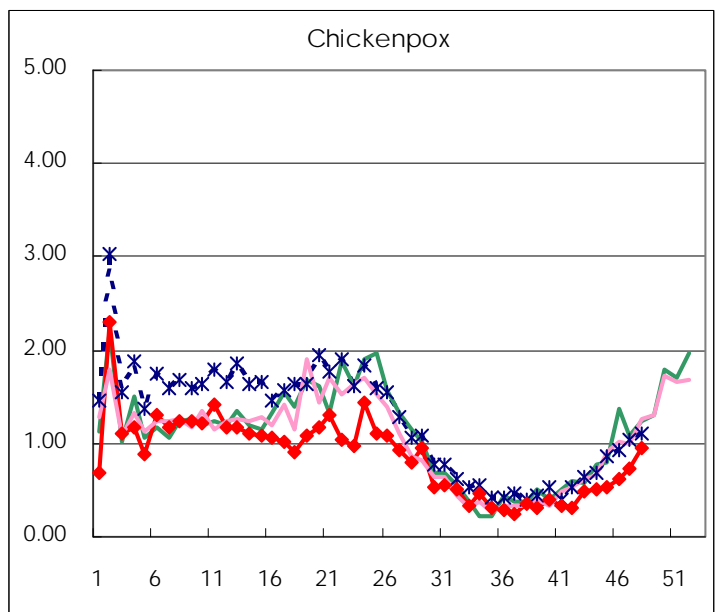
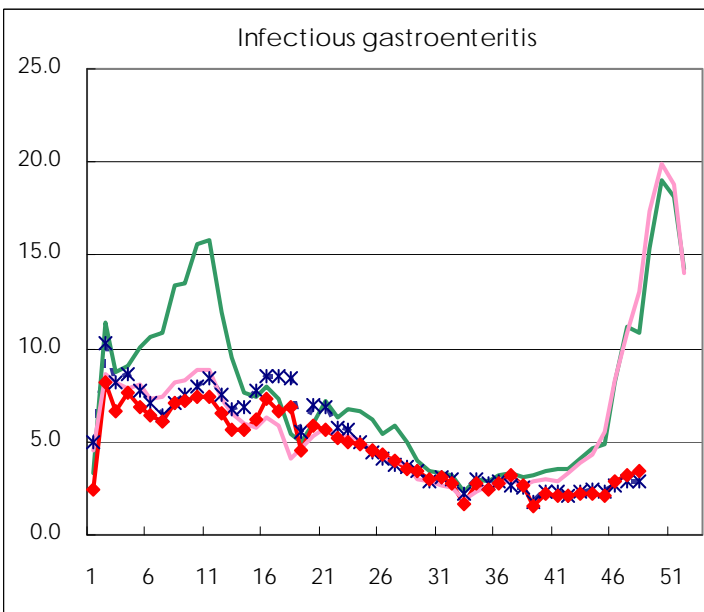
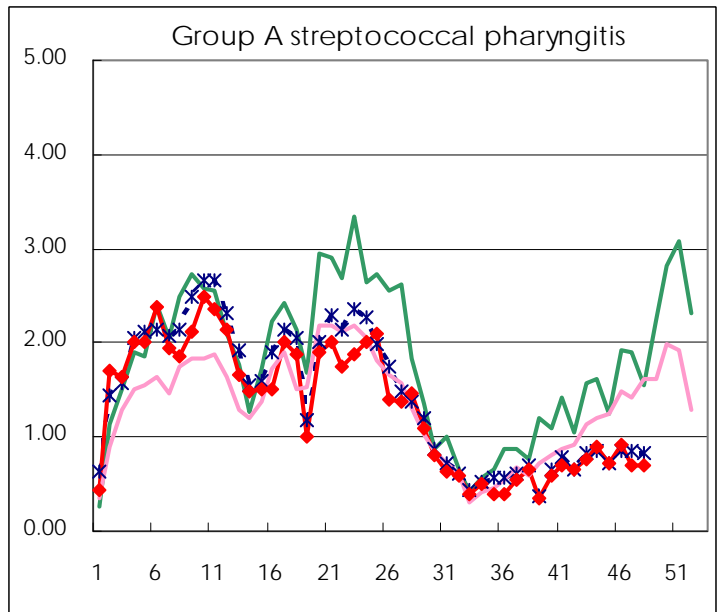
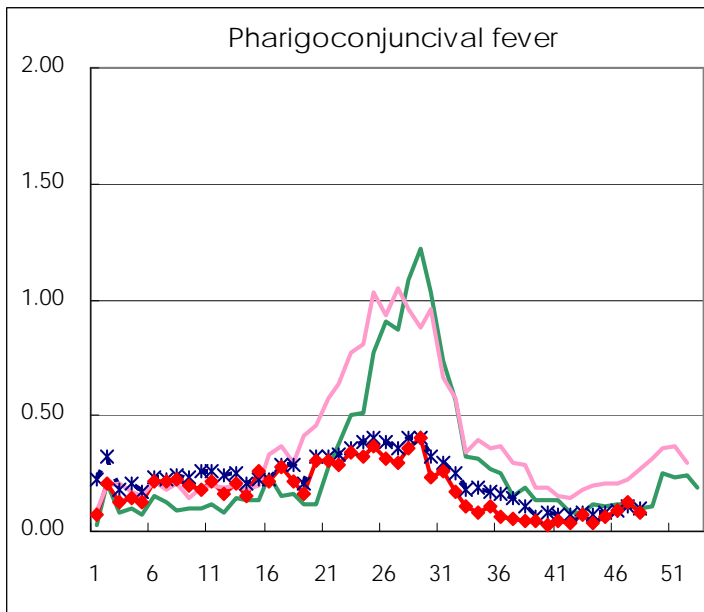
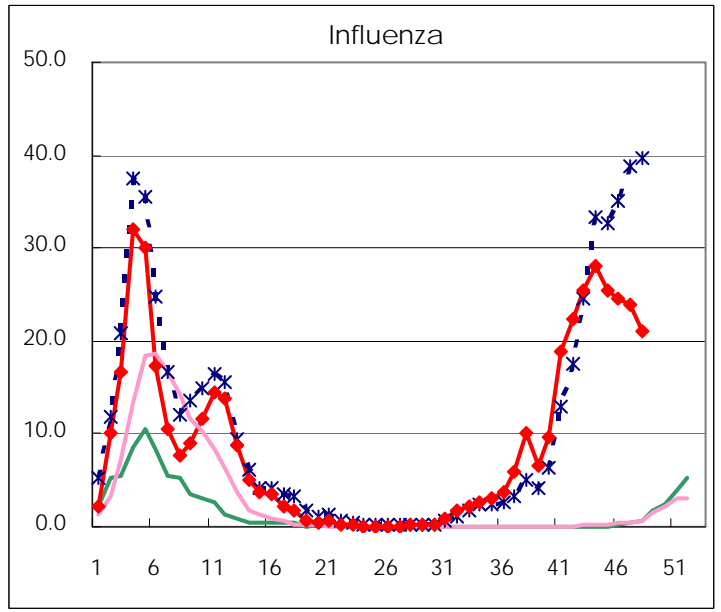
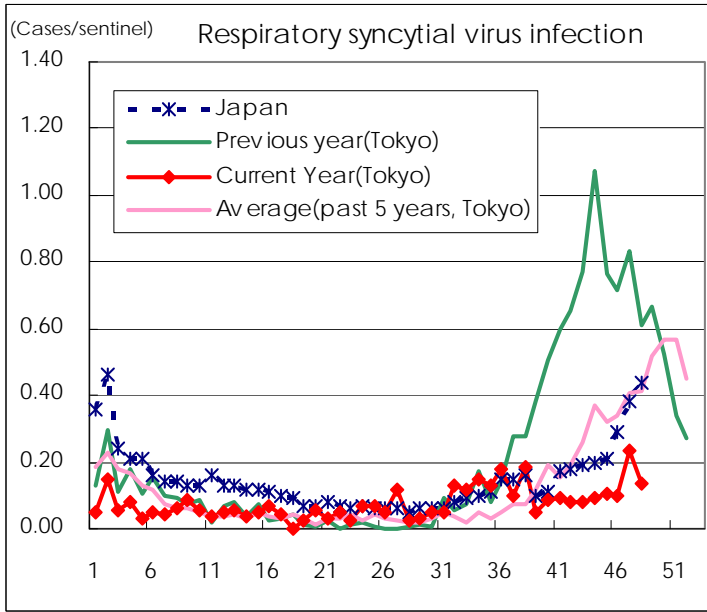
** As of July 24

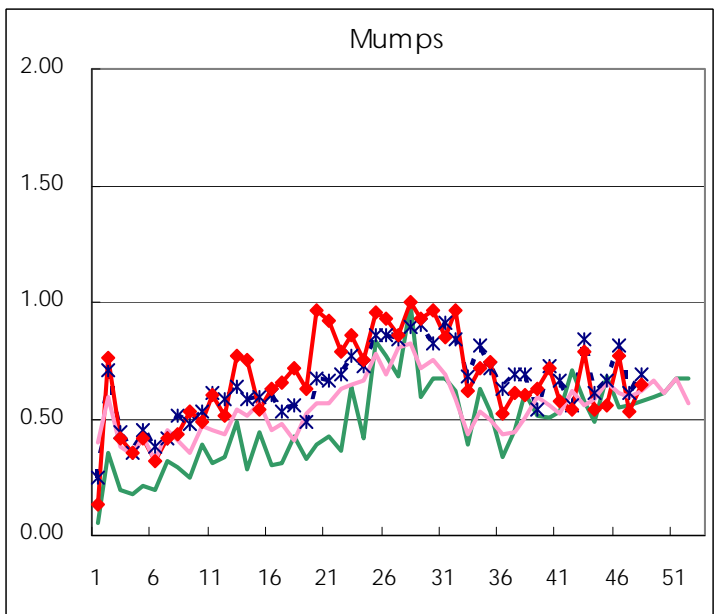
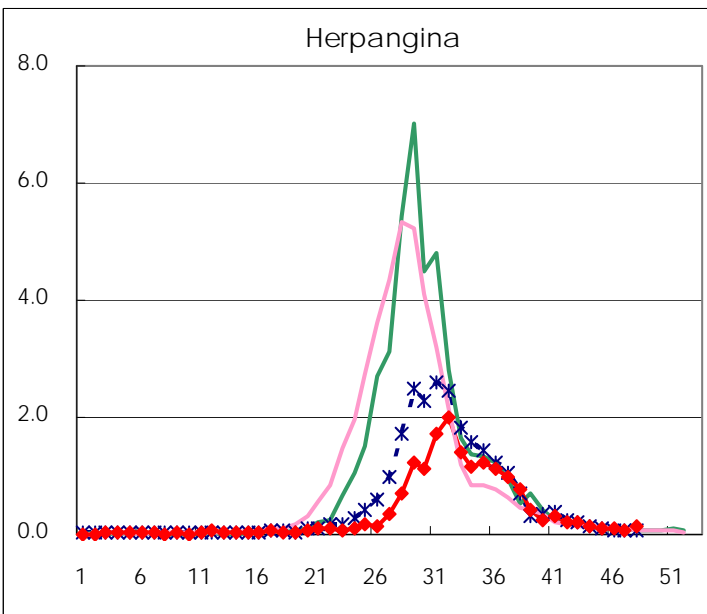
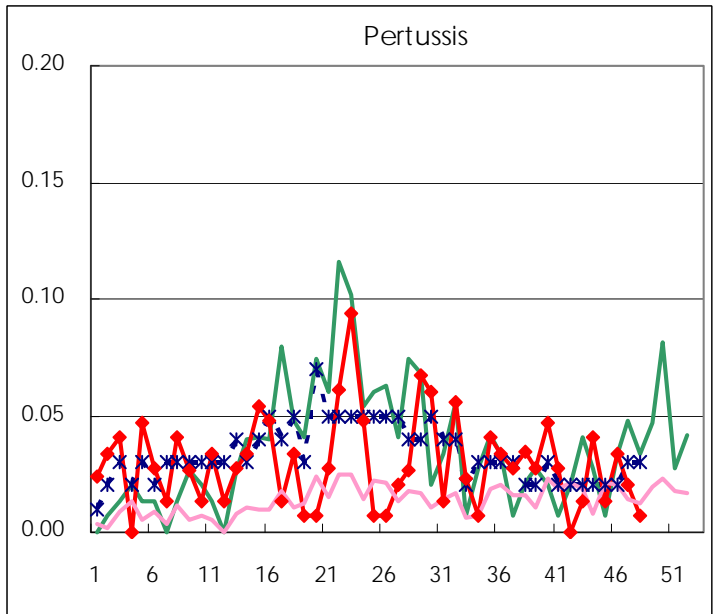
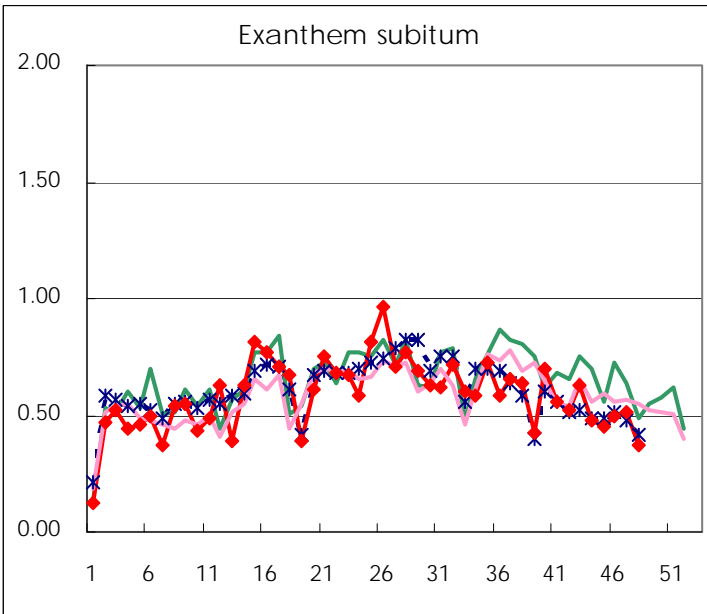
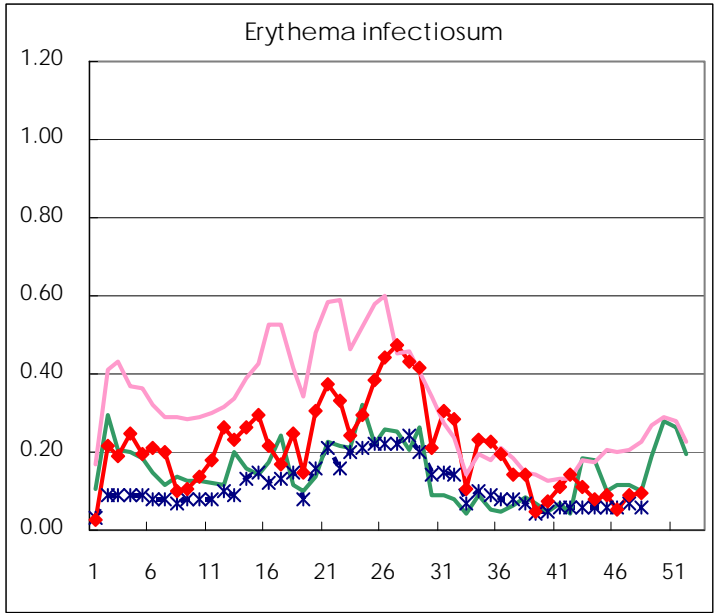
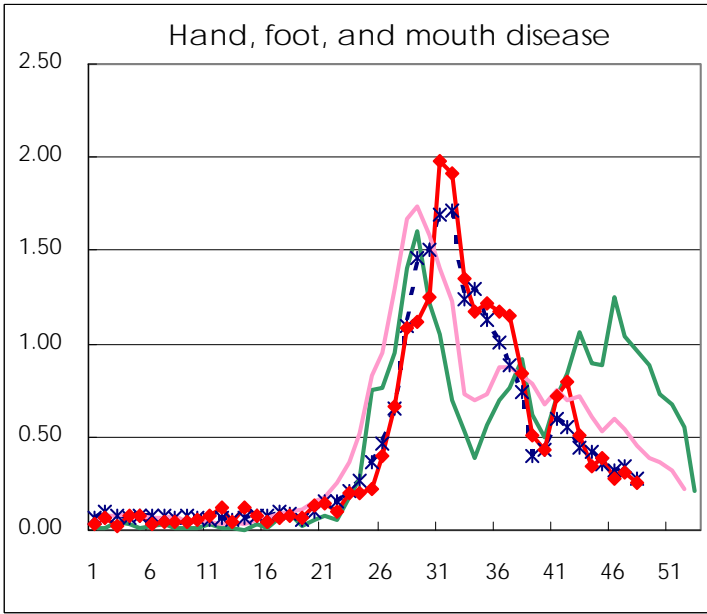
Number of patients with the diseases to be reported
by the designated clinics and hospitals

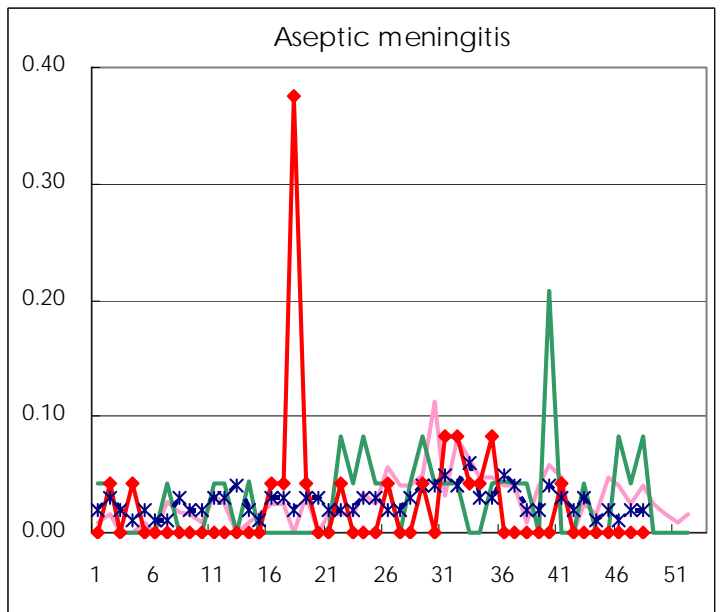
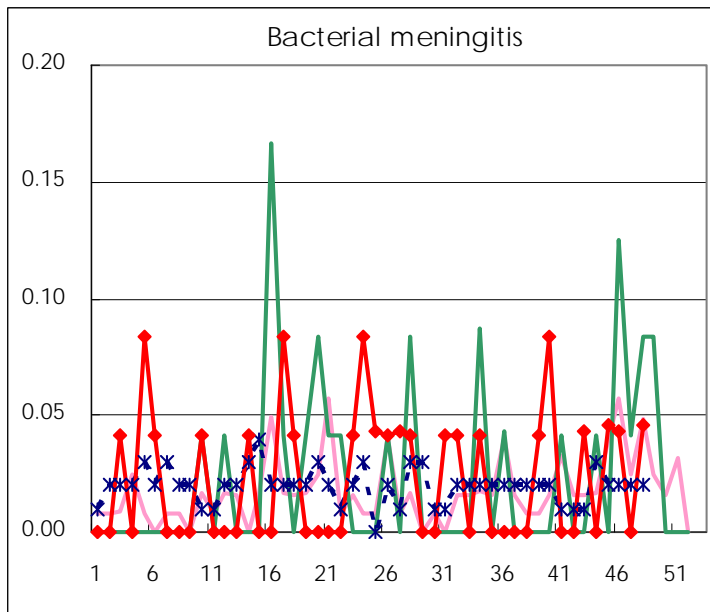
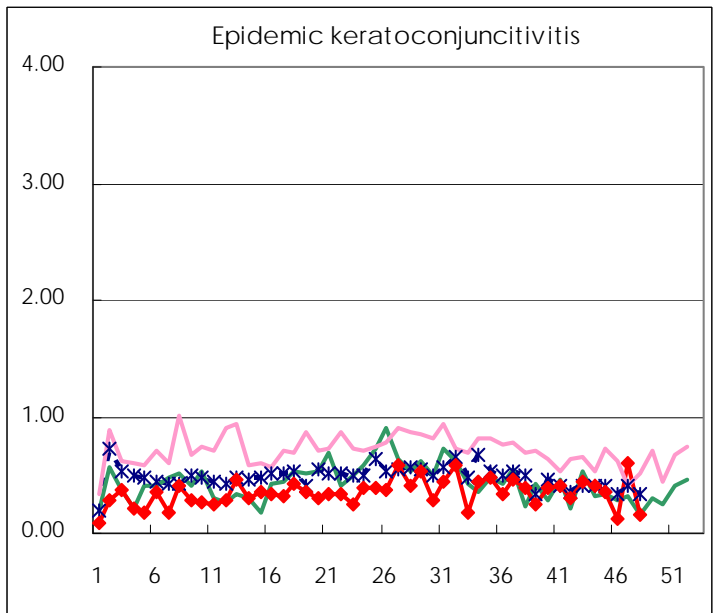
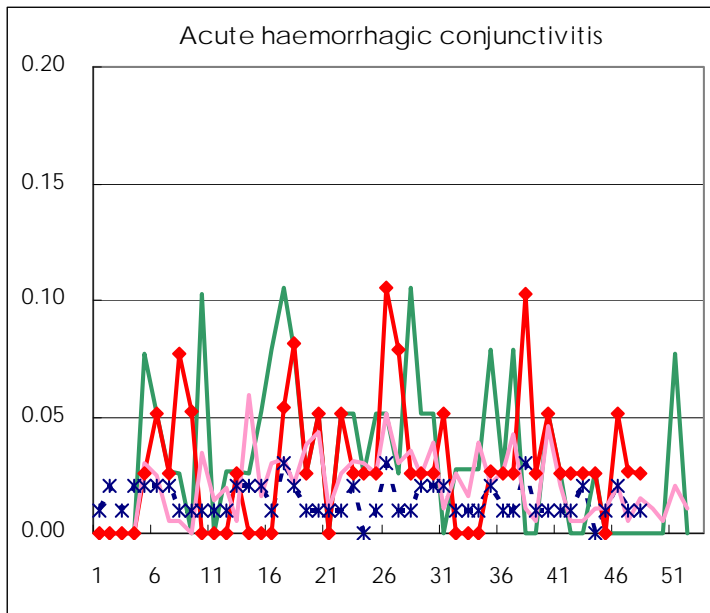
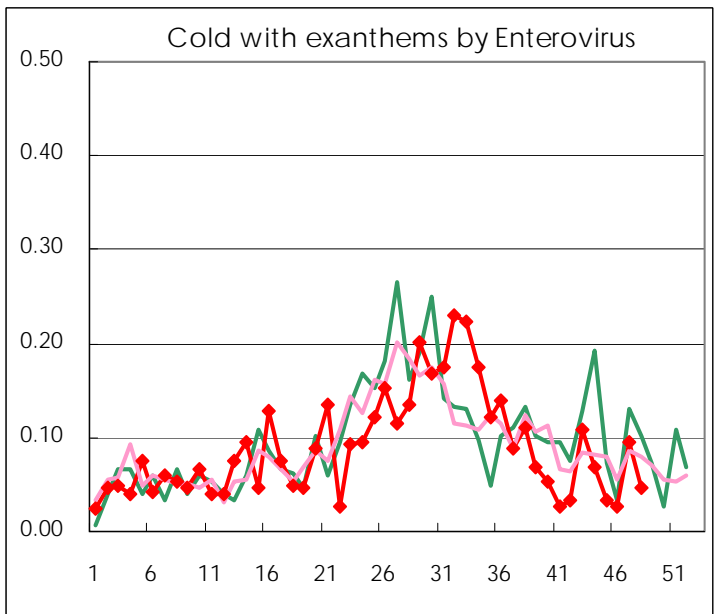
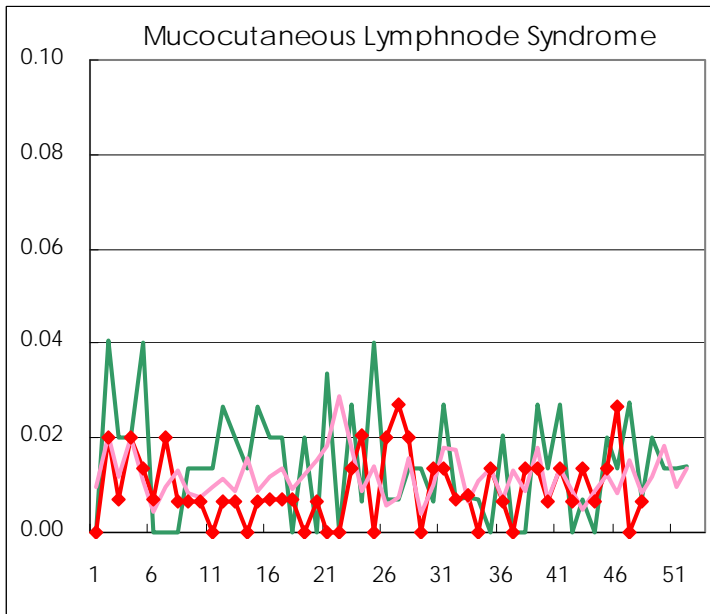
Diseases	2009				
	45th	46th	47th	48th	/sentinel
Respiratory syncytial virus infection	16	15	35	20	0.14
Pharyngoconjunctival fever	10	14	19	12	0.08
Group A streptococcal pharyngitis	107	138	105	105	0.71
Infectious gastroenteritis	309	431	474	512	3.46
Chickenpox	78	93	107	141	0.95
Hand, foot, and mouth disease	57	42	46	37	0.25
Erythema infectiosum	13	8	13	14	0.09
Exanthem subitum	67	74	76	55	0.37
Pertussis	2	5	3	1	0.01
Herpangina	17	15	11	19	0.13
Mumps	83	115	79	96	0.65
Cold with exanthems by Enterovirus	5	4	14	7	0.05
Mucocutaneous Lymphnode Syndrome	2	4		1	0.01
Influenza	7,330	7,119	6,905	6,031	21.01
Acute hemorrhagic conjunctivitis		2	1	1	0.03
Epidemic keratoconjunctivitis	14	5	23	6	0.15
Bacterial meningitis	1	1		1	0.05
Aseptic meningitis					
Mycoplasma pneumonia	3	7	3	2	0.09
Chlamydial pneumonia (excluding psittacosis)		1		2	0.09

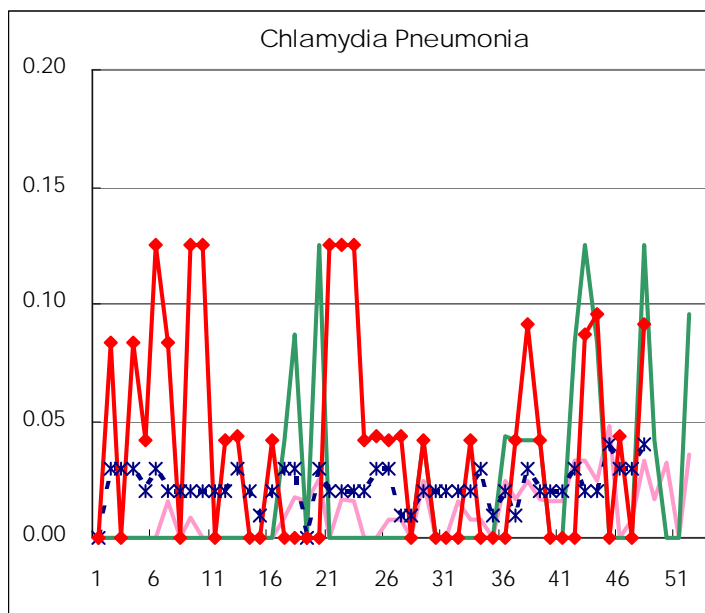
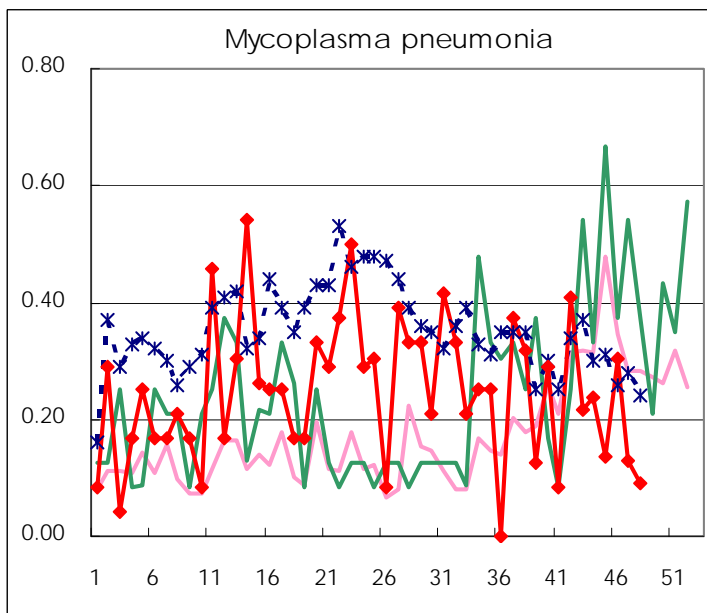
(Blank means 0.)

Disease Trend Graph (weekly reported cases per sentinel in comparison)









Number of sentinel facilities for weekly reporting

Types of sentinels	Number of sentinels	Sentinels having reported
Pediatric	150	148
Influenza	290	287
Ophthalmic	39	39
Specially-designated	24	22

Tokyo Metropolitan Government
Infectious Disease Surveillance Center