
INFECTIOUS DISEASES WEEKLY REPORT

TOKYO IDWR

Tokyo Metropolitan Infectious Disease Surveillance Center

17 December 2009 / Number 50

Surveillance System in Tokyo, Japan

The infectious diseases which all physicians must report

All physicians must report to health centers the incidence of the diseases which are shown at page one. Health centers electronically report the individual cases to Tokyo Metropolitan Infectious Disease Surveillance Center.

The infectious diseases required to be reported by the sentinels

The numbers of patients who visit the sentinel clinics or hospitals during a week are reported to health centers in Tokyo. And they electronically report the numbers to Tokyo Metropolitan Infectious Disease Surveillance Center. We have about 400 sentinel clinics and hospitals in Tokyo.

1st Week is early January and 52nd Week is end of December.

Tokyo Metropolitan Institute of Public Health
Epidemiological Information Office

TEL:81-3-3363-3213 FAX:81-3-5332-7365

e-mail:idsc@tokyo-eiken.go.jp

URL:idsc.tokyo-eiken.go.jp/

Number of patients with the diseases which all physicians must report

Category	Diseases	Tokyo				Japan		
		47th	48th	49th	50th	Cum 2009	50th	Cum 2009
I	Ebola hemorrhagic fever							
	Crimean-Congo hemorrhagic fever							
	Smallpox							
	South American hemorrhagic fever							
	Plague							
	Marburg disease							
	Lassa fever							
II	Acute poliomyelitis							
	Tuberculosis	73	50	58	52	3860	270	24856
	Diphtheria							
	Severe Acute Respiratory Syndrome(SARS)							
	Avian influenza H5N1							
III	Cholera					3		16
	Shigellosis		1	2		46	1	175
	Enterohemorrhagic Escherichia coli infection	3	3	3	3	307	23	3,751
	Typhoid fever				1	11	1	29
	Paratyphoid fever			1		12		25
IV	Hepatitis E					6		55
	West Nile fever							
	Hepatitis A	1				22	1	108
	Echinococcosis					1		23
	Yellow fever							
	Psittacosis					1		20
	Omsk hemorrhagic fever							
	Relapsing fever							
	Kyasanur forest disease							
	Q fever					1		2
	Rabies							
	Coccidioidomycosis					1		2
	Monkeypox							
	Hemorrhagic fever with renal syndrome							
	Western equine encephalitis							
	Tick-borne encephalitis							
	Anthrax							
	Scrub typhus(Tsutsugamushi disease)			3	4	11	30	387
	Dengue fever		1			32	2	88
	Eastern equine encephalitis							
	Avian influenza (excluding H5N1)							
	Nipah virus infection							
	Japanese spotted fever							122
	Japanese encephalitis						1	3
	Epidemic typhus							
	Hantavirus pulmonary syndrome							
	Herpes B virus infection							
	Glanders							
	Brucellosis						1	2
	Venezuelan equine encephalitis							
Hendra virus infection								
Botulism								
Malaria			1		26		54	
Tularemia								
Lyme disease					1		7	
Lyssavirus infection(excluding rabies)								
Rift valley fever								
Melioidosis								
Legionellosis	1	1	2		51	12	655	
Leptospirosis						1	12	
Rocky mountain spotted fever								

Category	Diseases	Tokyo					Japan	
		47th	48th	49th	50th	Cum 2009	50th	Cum 2009
V	Amebiasis	1	2	3	2	132	9	724
	Viral hepatitis(excluding hepatitis A and E)	1		1		33	1	202
	Acute encephalitis(excluding JE and WNE)	3	2		2	43	9	447
	Cryptosporidiosis		1			4		16
	Creutzfeldt-Jakob disease	2		1		18		133
	Severe invasive streptococcal infections(TSLS)					9		98
	Acquired immunodeficiency syndrome (AIDS)	14	6	10	11	455	15	1,324
	Giardiasis	1			1	23		70
	Meningococcal meningitis					1		10
	Congenital rubella syndrome							1
	Syphilis	2	1	6	7	189	10	642
	Tetanus					7	1	108
	Vancomycin-resistant S. aureus infection							
	Vancomycin-resistant Enterococcus infection					13		101
	Rubella					18	1	143
Measles	2			1	111	7	726	
Novel Flu	Novel influenza (swine-origin influenza A/H1N1) *	—	—	—	—	1187	—	5038

* laboratory confirmed cases and suspected cases

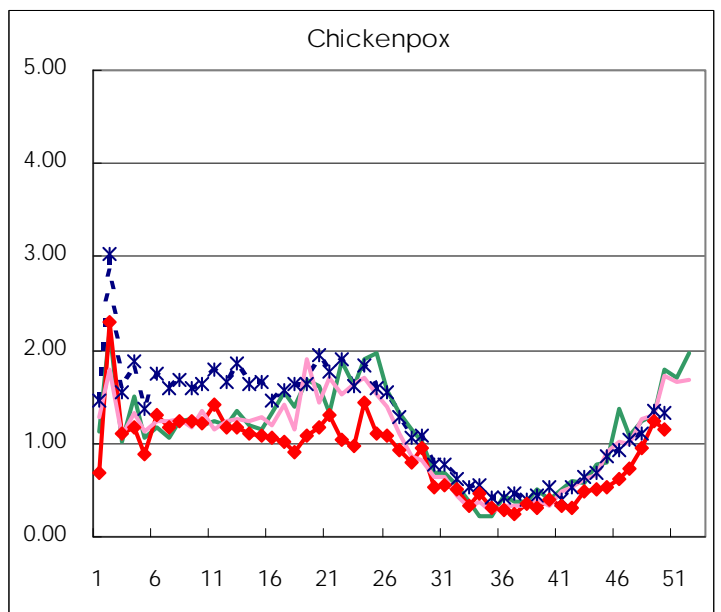
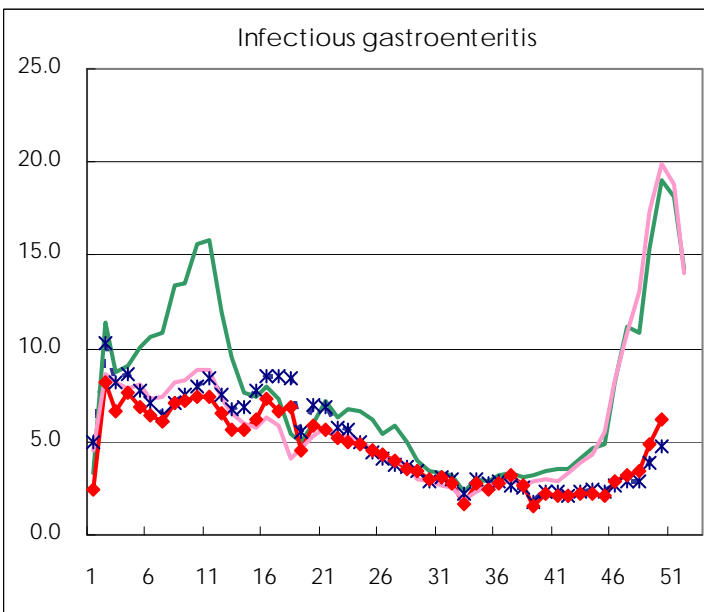
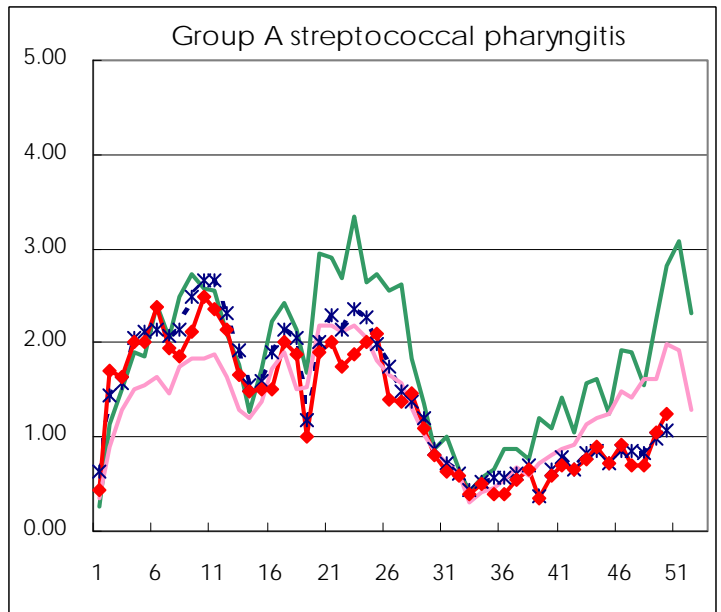
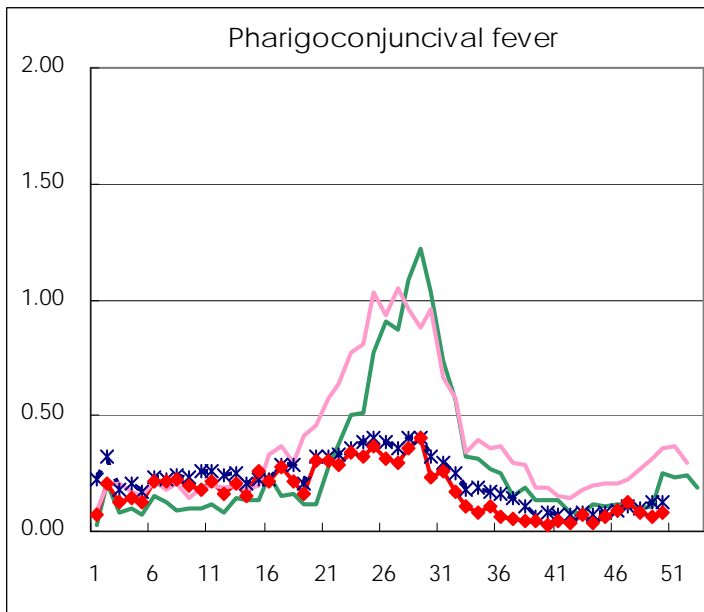
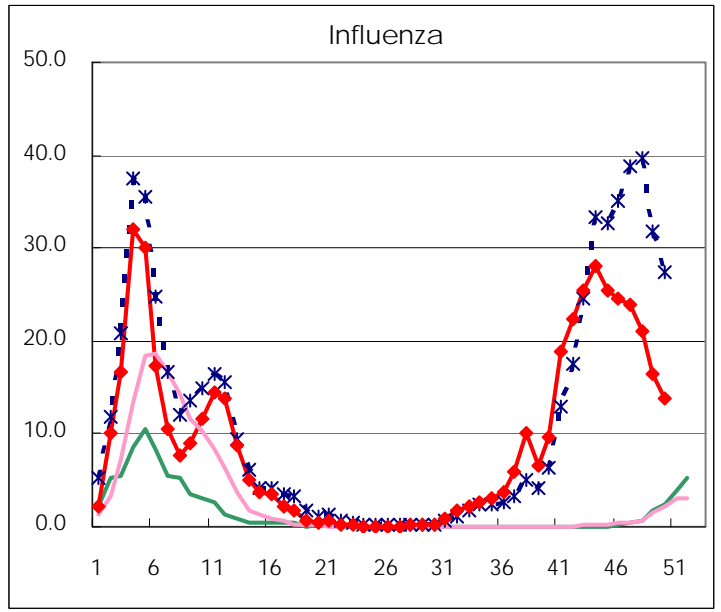
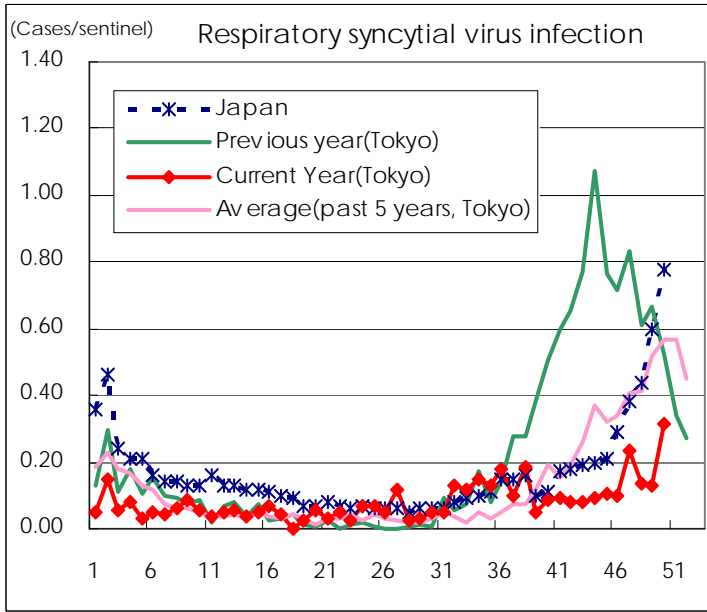
** As of July 24

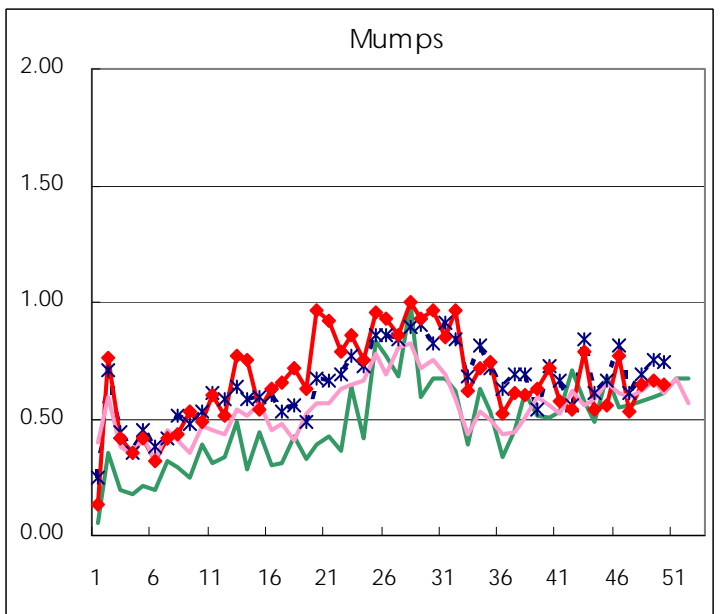
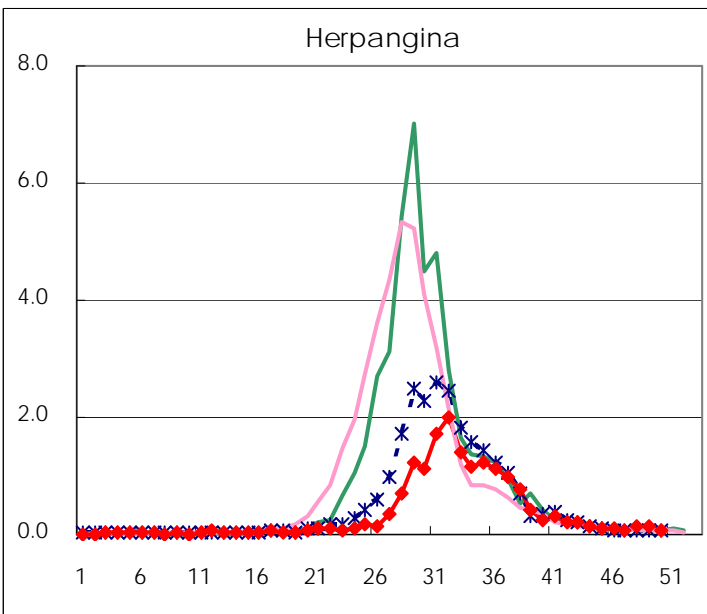
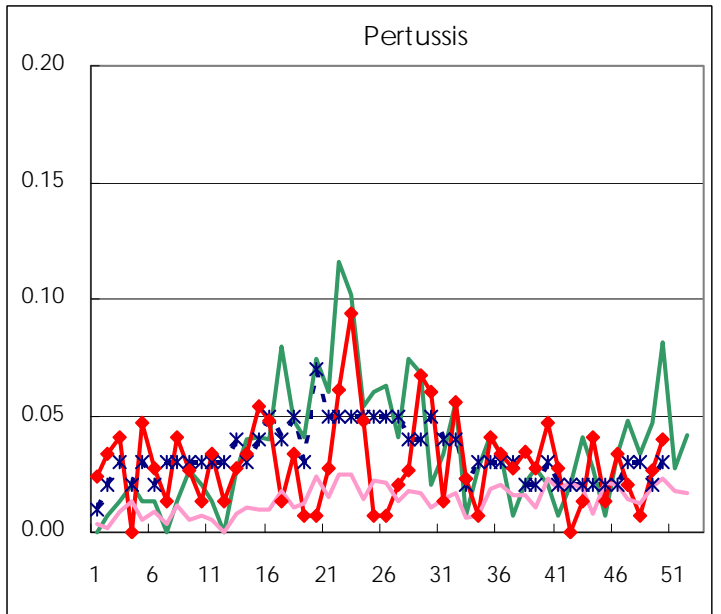
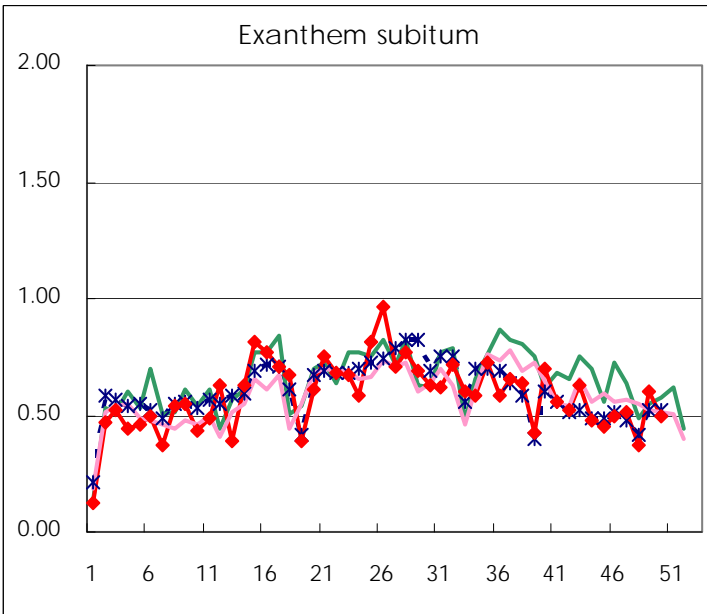
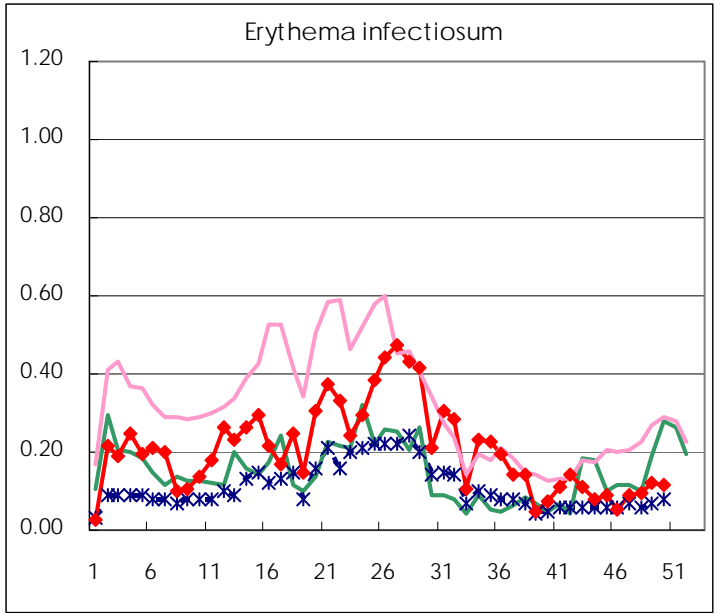
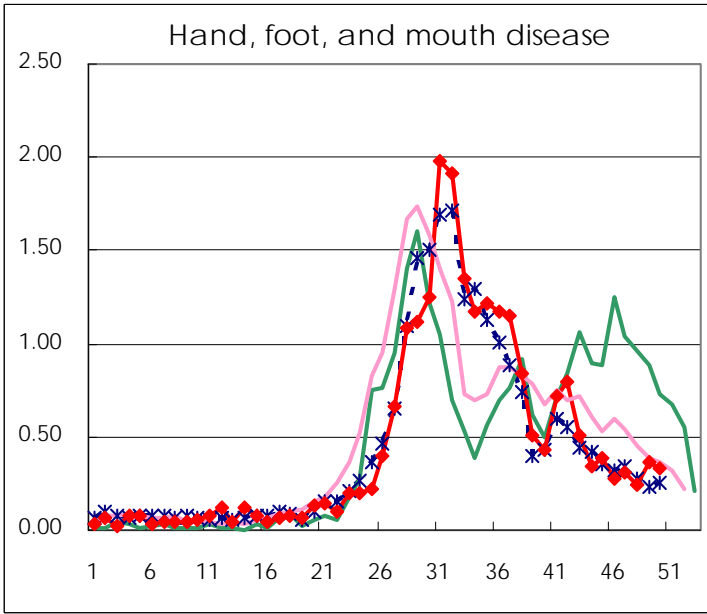
**Number of patients with the diseases to be reported
by the designated clinics and hospitals**

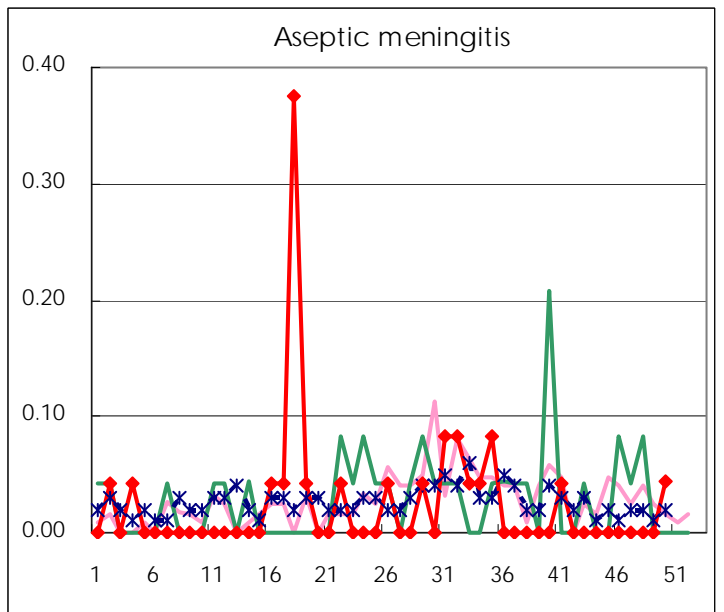
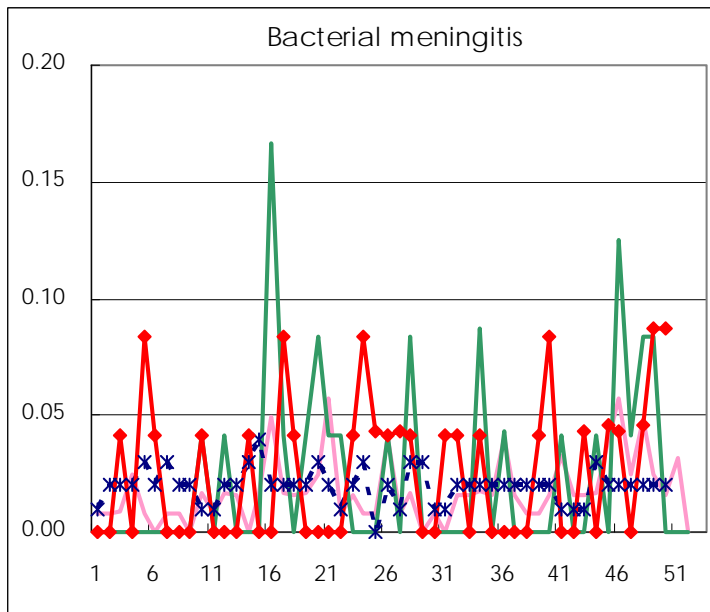
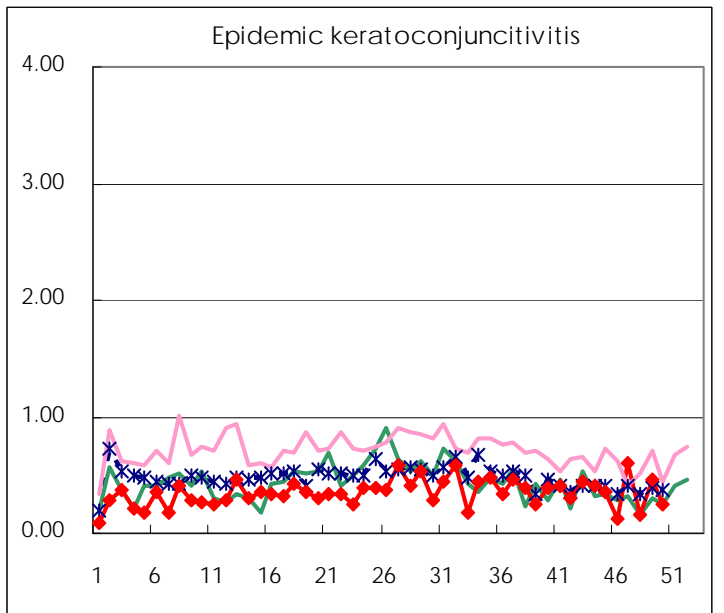
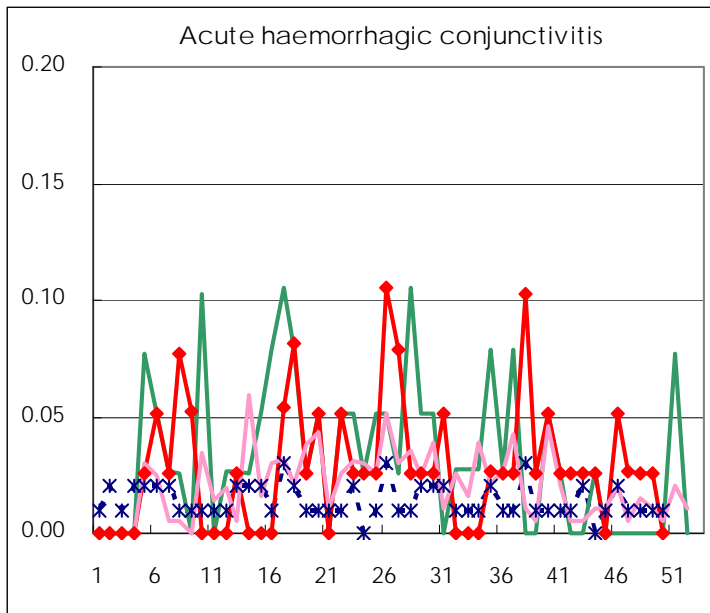
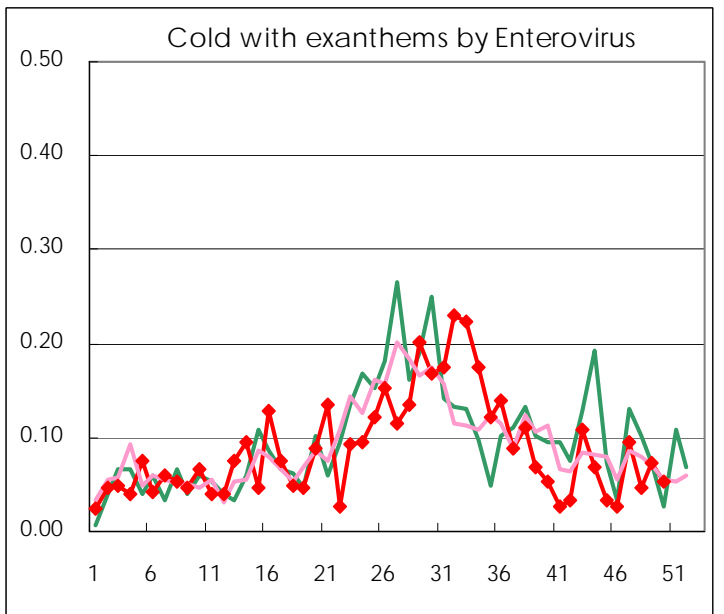
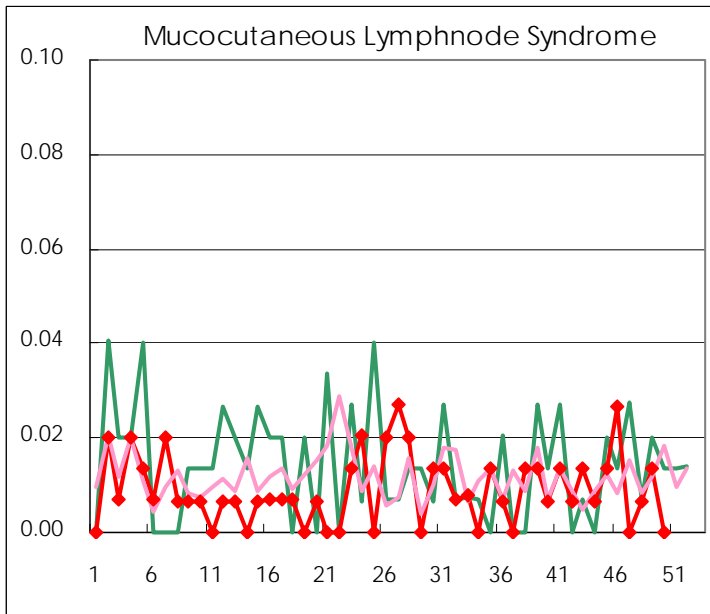
Diseases	2009				
	47th	48th	49th	50th	/sentinel
Respiratory syncytial virus infection	35	20	19	47	0.31
Pharyngoconjunctival fever	19	12	9	12	0.08
Group A streptococcal pharyngitis	105	105	156	187	1.25
Infectious gastroenteritis	474	514	733	934	6.23
Chickenpox	107	143	186	174	1.16
Hand, foot, and mouth disease	46	37	55	50	0.33
Erythema infectiosum	13	14	18	17	0.11
Exanthem subitum	76	55	90	75	0.50
Pertussis	3	1	4	6	0.04
Herpangina	11	19	22	10	0.07
Mumps	79	96	100	97	0.65
Cold with exanthems by Enterovirus	14	7	11	8	0.05
Mucocutaneous Lymphnode Syndrome		1	2		
Influenza	6,905	6,065	4,731	3,987	13.75
Acute hemorrhagic conjunctivitis	1	1	1		
Epidemic keratoconjunctivitis	23	6	18	10	0.26
Bacterial meningitis		1	2	2	0.09
Aseptic meningitis				1	0.04
Mycoplasma pneumonia	3	2	6	6	0.26
Chlamydial pneumonia (excluding psittacosis)		2			

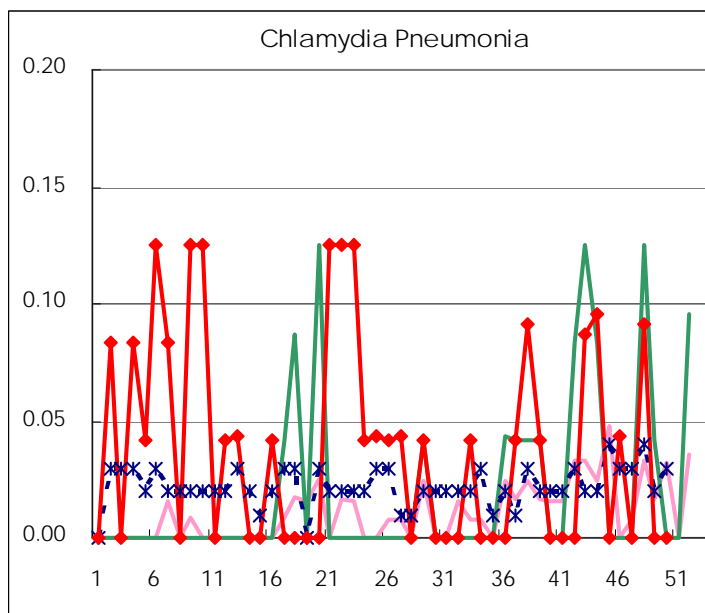
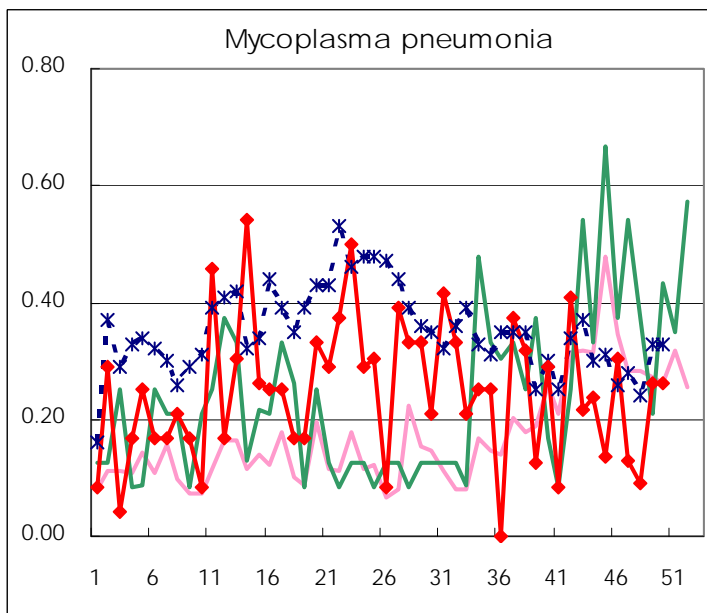
(Blank means 0.)

Disease Trend Graph (weekly reported cases per sentinel in comparison)









Number of sentinel facilities for weekly reporting

Types of sentinels	Number of sentinels	Sentinels having reported
Pediatric	150	150
Influenza	290	290
Ophthalmic	39	39
Specially-designated	24	23

Tokyo Metropolitan Government
Infectious Disease Surveillance Center