
INFECTIOUS DISEASES WEEKLY REPORT

TOKYO IDWR

Tokyo Metropolitan Infectious Disease Surveillance Center

8 January 2010 / Number 53

Surveillance System in Tokyo, Japan

The infectious diseases which all physicians must report

All physicians must report to health centers the incidence of the diseases which are shown at page one. Health centers electronically report the individual cases to Tokyo Metropolitan Infectious Disease Surveillance Center.

The infectious diseases required to be reported by the sentinels

The numbers of patients who visit the sentinel clinics or hospitals during a week are reported to health centers in Tokyo. And they electronically report the numbers to Tokyo Metropolitan Infectious Disease Surveillance Center. We have about 400 sentinel clinics and hospitals in Tokyo.

1st Week is early January and 52nd Week is end of December.

Tokyo Metropolitan Institute of Public Health
Epidemiological Information Office

TEL:81-3-3363-3213 FAX:81-3-5332-7365

e-mail: idsc@tokyo-eiken.go.jp

URL: idsc.tokyo-eiken.go.jp/

Number of patients with the diseases which all physicians must report

Category	Diseases	Tokyo				Japan		
		50th	51st	52nd	53rd	Cum 2009	53rd	Cum 2009
I	Ebola hemorrhagic fever							
	Crimean-Congo hemorrhagic fever							
	Smallpox							
	South American hemorrhagic fever							
	Plague							
	Marburg disease							
	Lassa fever							
II	Acute poliomyelitis							
	Tuberculosis	72	55	48	25	4116	132	26253
	Diphtheria							
	Severe Acute Respiratory Syndrome(SARS)							
	Avian influenza H5N1							
III	Cholera					3		16
	Shigellosis				2	48	1	179
	Enterohemorrhagic Escherichia coli infection	3	3	2	4	316	16	3,837
	Typhoid fever	1				11		29
	Paratyphoid fever					12		26
IV	Hepatitis E					6		54
	West Nile fever							
	Hepatitis A			2		24		114
	Echinococcosis					1		25
	Yellow fever							
	Psittacosis					1		21
	Omsk hemorrhagic fever							
	Relapsing fever							
	Kyasanur forest disease							
	Q fever					1		2
	Rabies							
	Coccidioidomycosis					1		2
	Monkeypox							
	Hemorrhagic fever with renal syndrome							
	Western equine encephalitis							
	Tick-borne encephalitis							
	Anthrax							
	Scrub typhus(Tsutsugamushi disease)	4	1	2		14	13	455
	Dengue fever					32		92
	Eastern equine encephalitis							
	Avian influenza (excluding H5N1)							
	Nipah virus infection							
	Japanese spotted fever							125
	Japanese encephalitis							3
	Epidemic typhus							
	Hantavirus pulmonary syndrome							
	Herpes B virus infection							
	Glanders							
	Brucellosis						1	2
	Venezuelan equine encephalitis							
Hendra virus infection								
Botulism								
Malaria						26	56	
Tularemia								
Lyme disease						1	7	
Lyssavirus infection(excluding rabies)								
Rift valley fever								
Melioidosis								
Legionellosis			2			53	3	689
Leptospirosis							15	
Rocky mountain spotted fever								

Category	Diseases	Tokyo				Japan		
		50th	51st	52nd	53rd	Cum 2009	53rd	Cum 2009
V	Amebiasis	2	7		1	140	5	769
	Viral hepatitis(excluding hepatitis A and E)		2			35	1	212
	Acute encephalitis(excluding JE and WNE)	3		1		45	5	493
	Cryptosporidiosis					4		17
	Creutzfeldt-Jakob disease		1			19	1	140
	Severe invasive streptococcal infections(TSLS)		1			10		103
	Acquired immunodeficiency syndrome (AIDS)	12	6	7	3	472	4	1,417
	Giardiasis	1	1			24	1	74
	Meningococcal meningitis					1		10
	Congenital rubella syndrome							1
	Syphilis	7	2	4	1	196	3	676
	Tetanus					7	1	112
	Vancomycin-resistant S. aureus infection							
	Vancomycin-resistant Enterococcus infection			2		15		117
	Rubella	1				19		147
Measles	1				111	2	741	
Novel Flu	Novel influenza (swine-origin influenza A/H1N1) *	—	—	—	—	1187	—	**5038

* laboratory confirmed cases and suspected cases

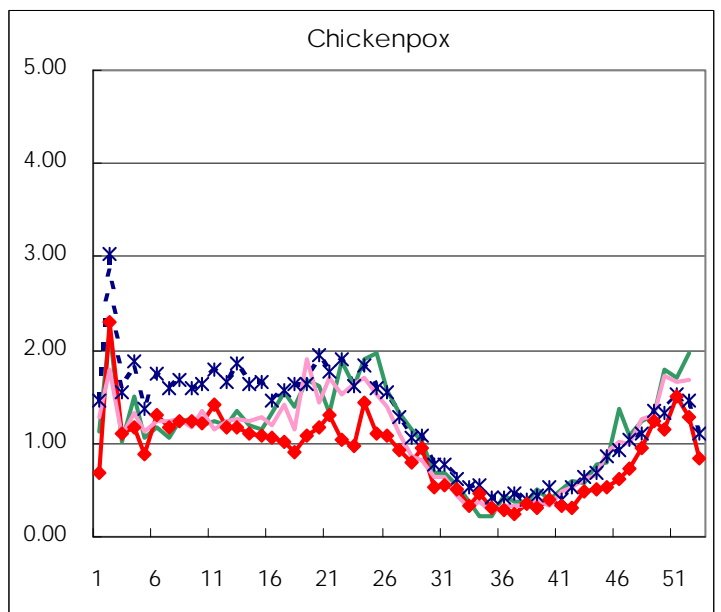
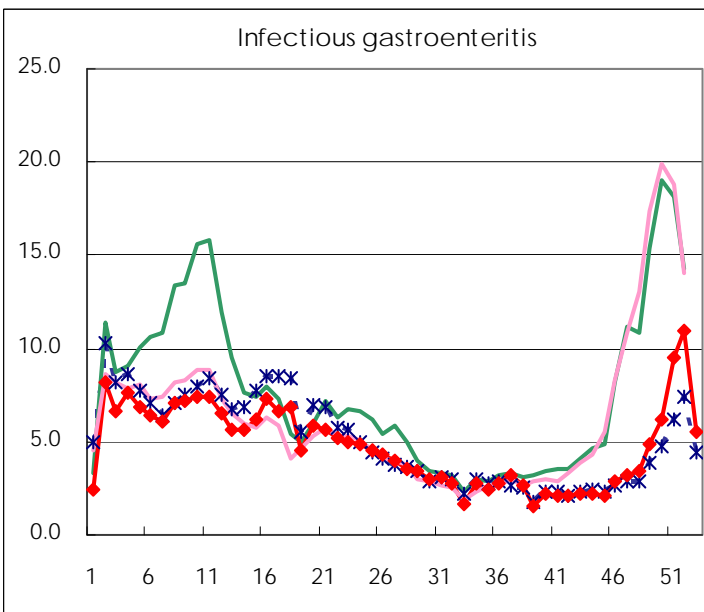
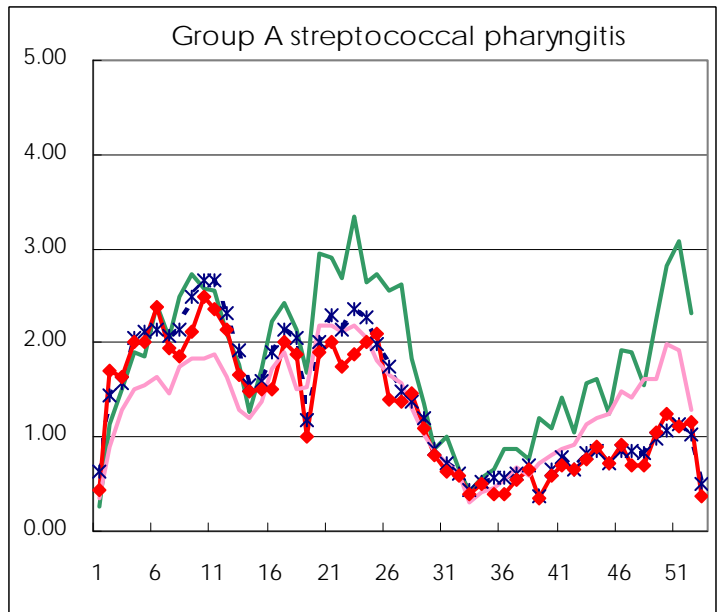
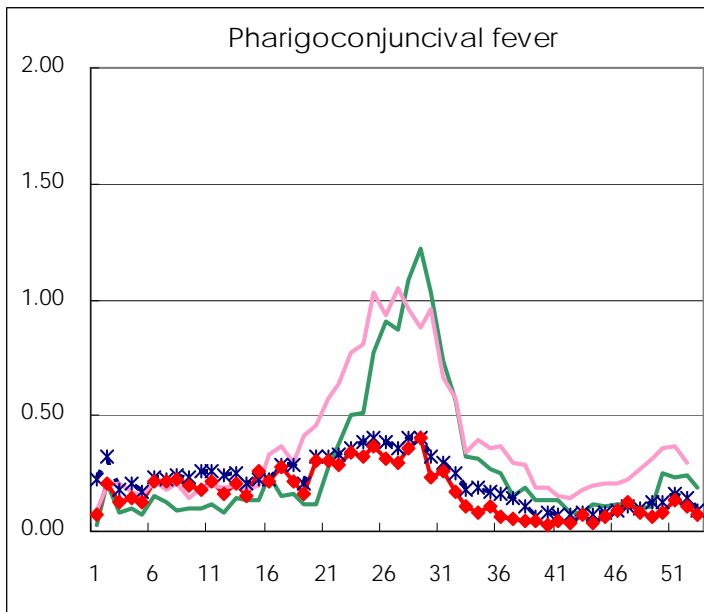
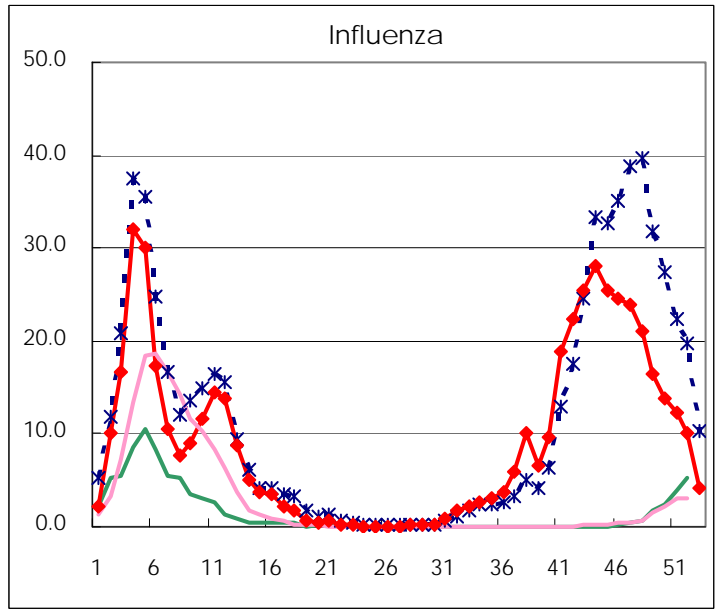
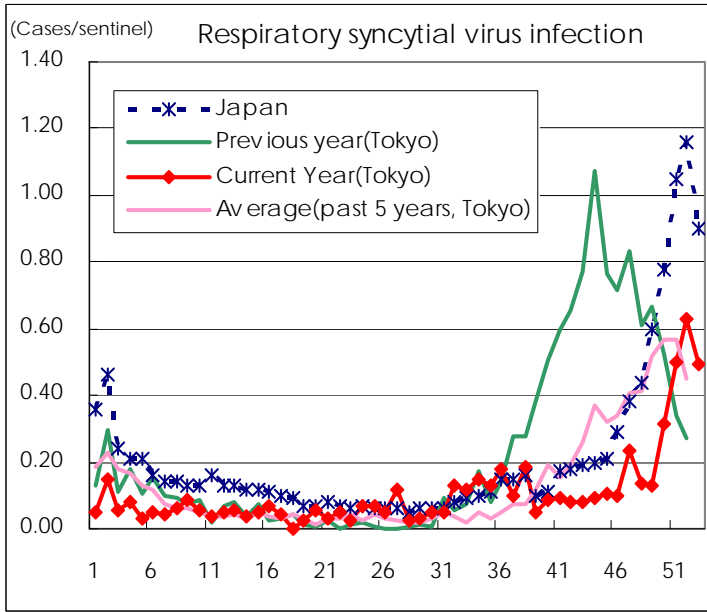
** As of July 24

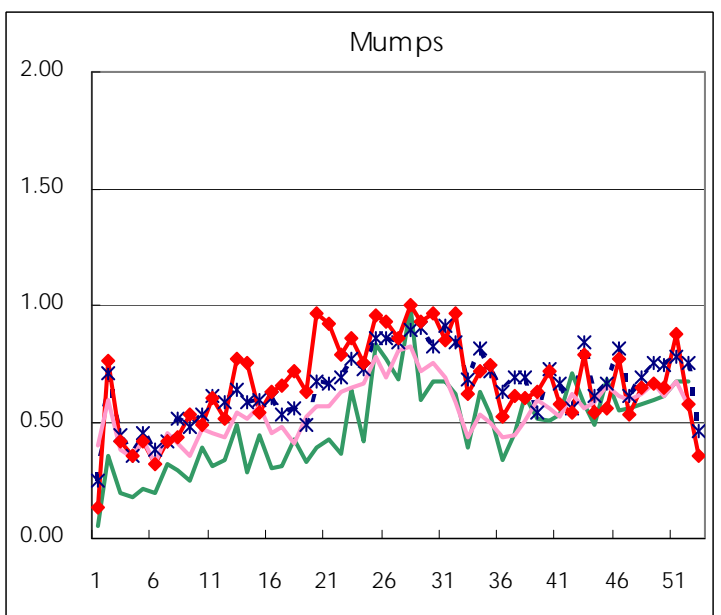
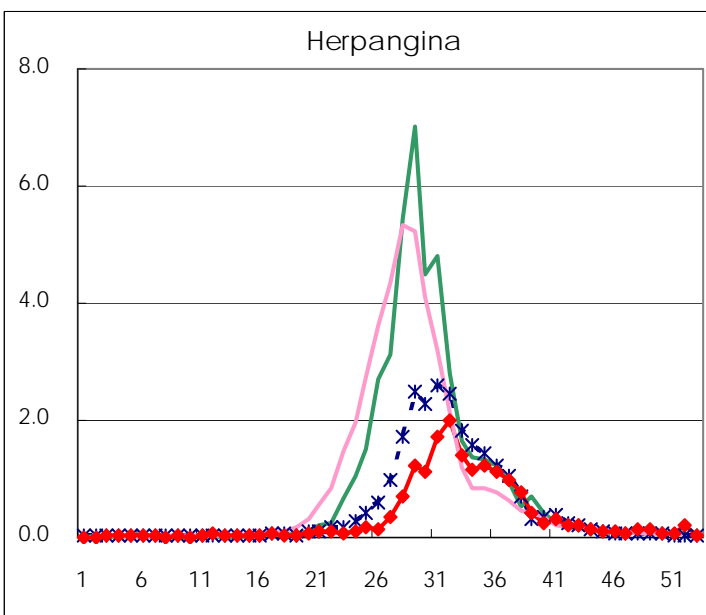
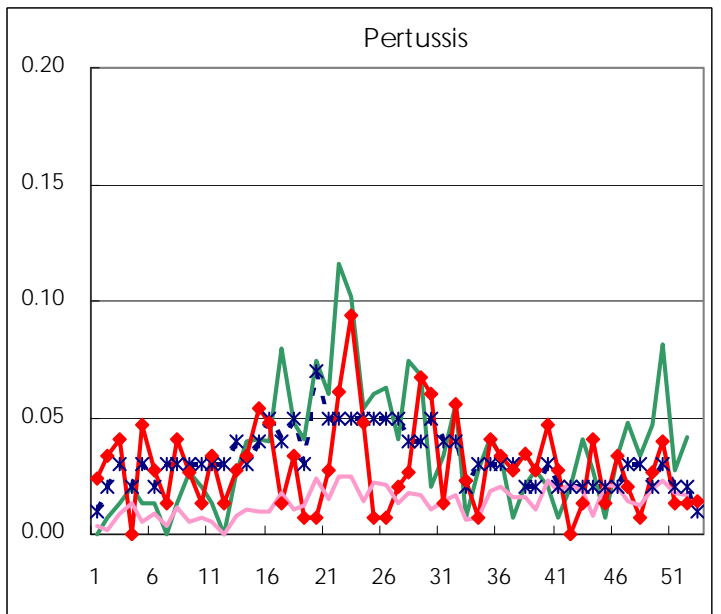
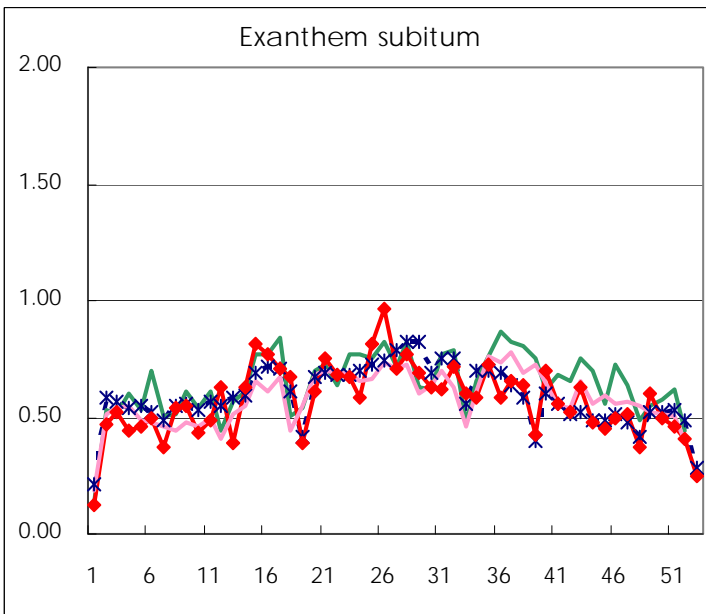
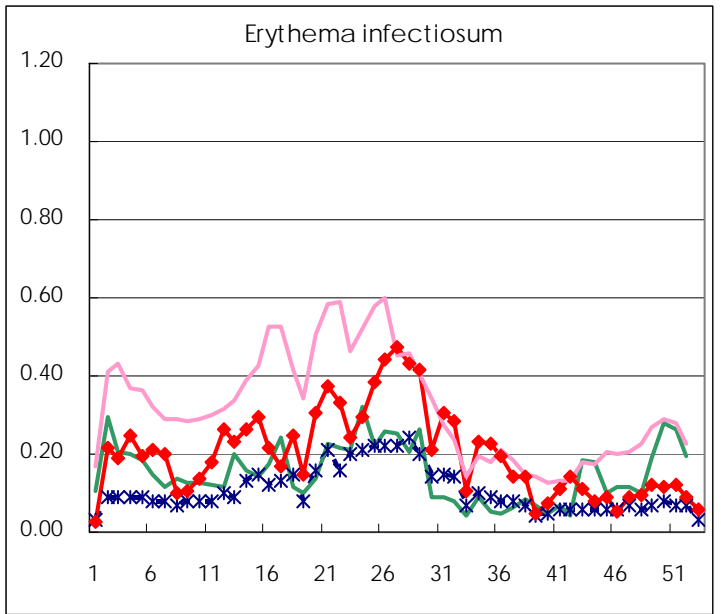
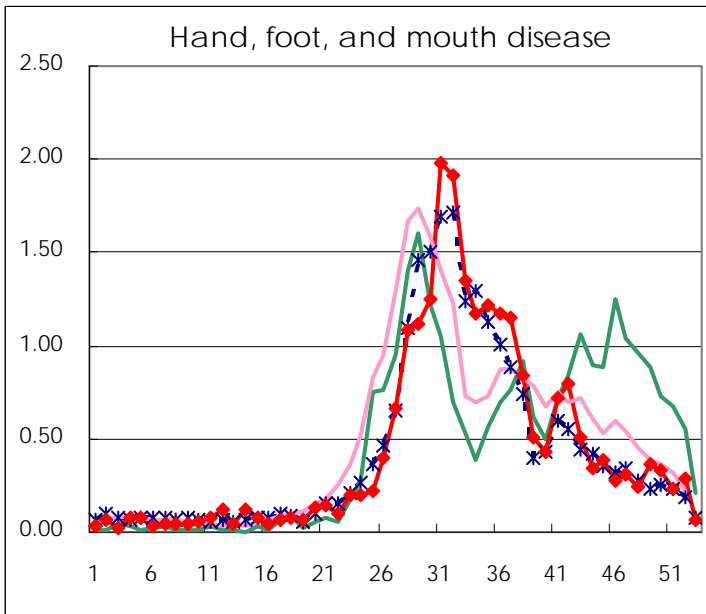
Number of patients with the diseases to be reported
by the designated clinics and hospitals

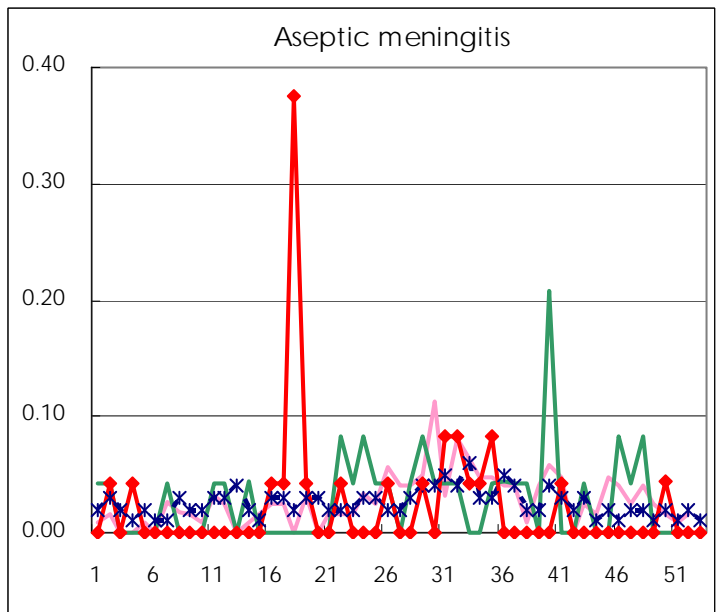
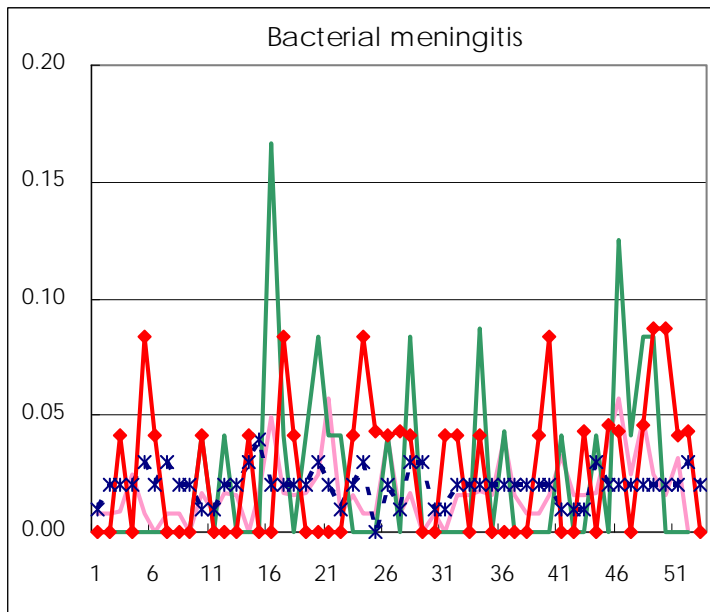
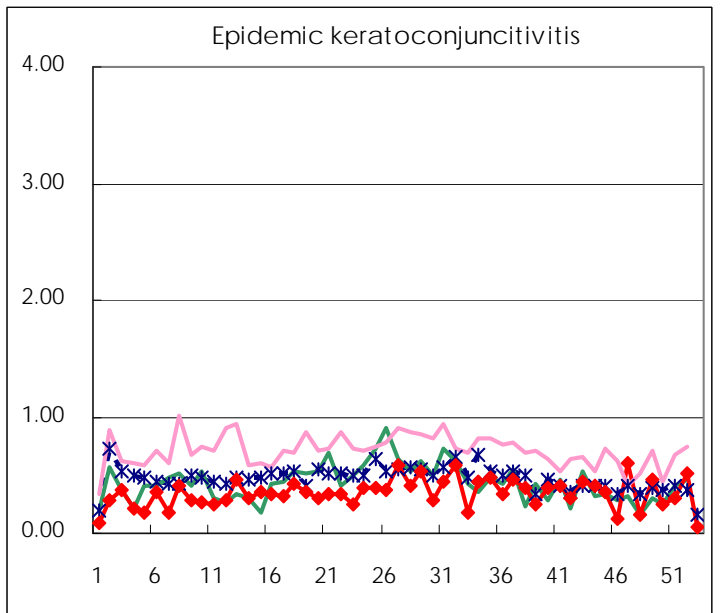
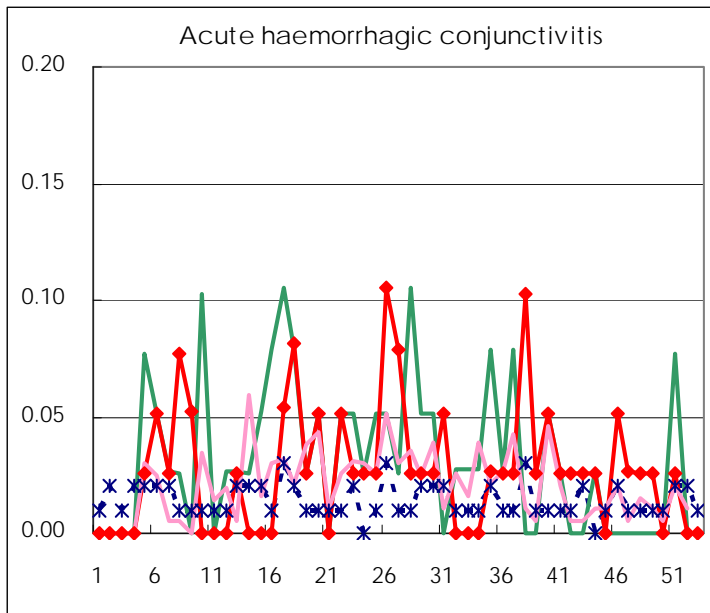
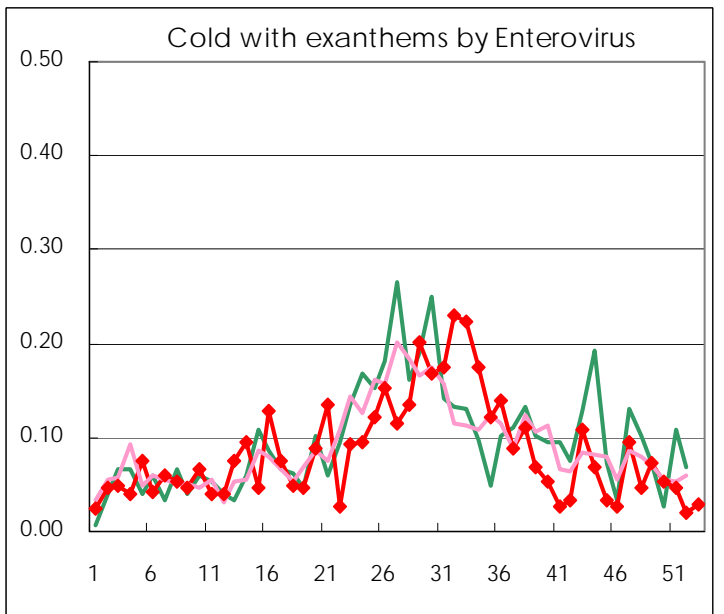
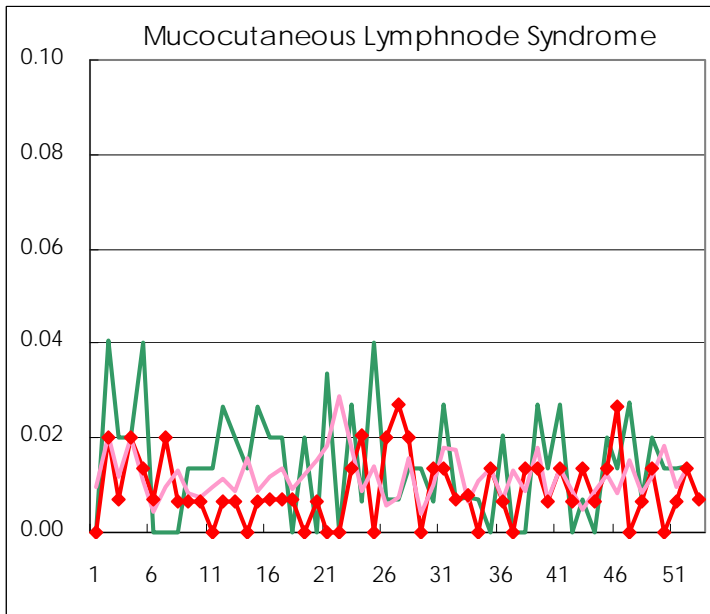
Diseases	2009				
	50th	51st	52nd	53rd	/sentinel
Respiratory syncytial virus infection	47	75	94	70	0.50
Pharyngoconjunctival fever	12	20	16	10	0.07
Group A streptococcal pharyngitis	187	168	174	52	0.37
Infectious gastroenteritis	934	1,435	1,631	785	5.57
Chickenpox	174	225	191	118	0.84
Hand, foot, and mouth disease	50	35	43	10	0.07
Erythema infectiosum	17	18	13	8	0.06
Exanthem subitum	75	69	61	35	0.25
Pertussis	6	2	2	2	0.01
Herpangina	10	11	33	6	0.04
Mumps	97	131	86	50	0.35
Cold with exanthems by Enterovirus	8	7	3	4	0.03
Mucocutaneous Lymphnode Syndrome		1	2	1	0.01
Influenza	3,987	3,555	2,859	1,145	4.18
Acute hemorrhagic conjunctivitis		1			
Epidemic keratoconjunctivitis	10	12	19	2	0.06
Bacterial meningitis	2	1	1		
Aseptic meningitis	1				
Mycoplasma pneumonia	6	4	3		
Chlamydial pneumonia (excluding psittacosis)			1		

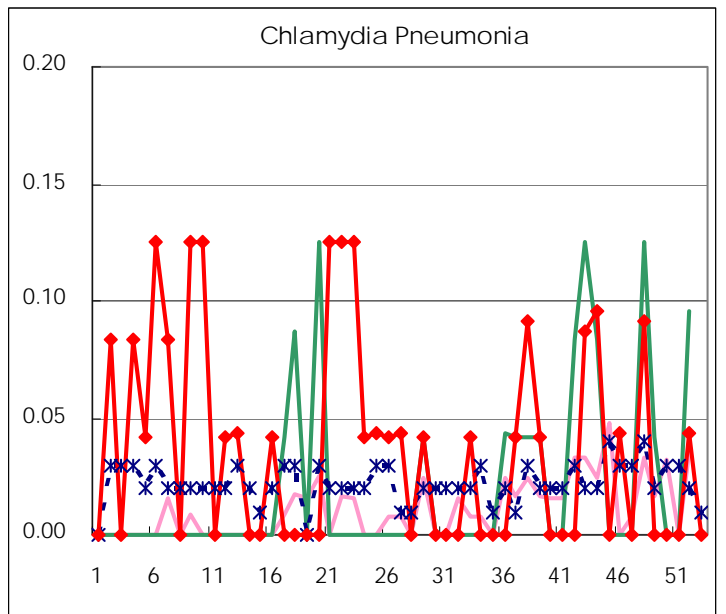
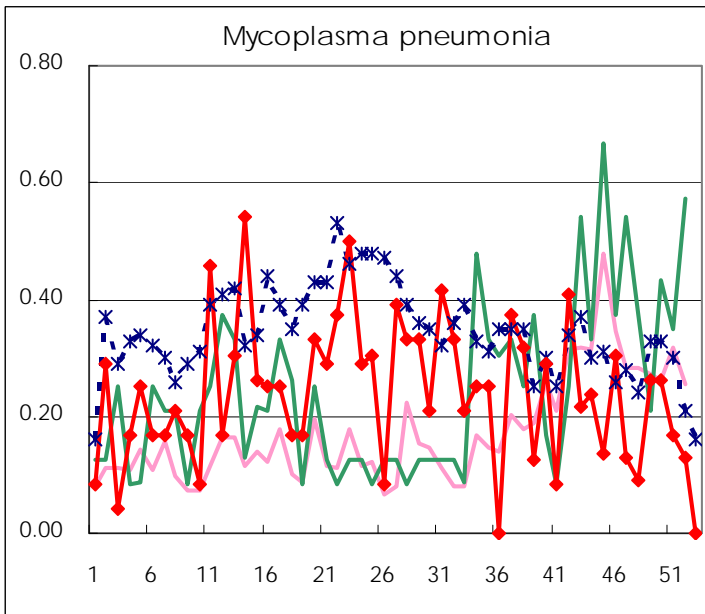
(Blank means 0.)

Disease Trend Graph (weekly reported cases per sentinel in comparison)









Number of sentinel facilities
for weekly reporting

Types of sentinels	Number of sentinels	Sentinels having reported
Pediatric	150	141
Influenza	290	274
Ophthalmic	39	33
Specially-designated	24	24

Tokyo Metropolitan Government
Infectious Disease Surveillance Center