
INFECTIOUS DISEASES WEEKLY REPORT

TOKYO IDWR

Tokyo Metropolitan Infectious Disease Surveillance Center

4 February 2010 / Number 4

Surveillance System in Tokyo, Japan

The infectious diseases which all physicians must report

All physicians must report to health centers the incidence of the diseases which are shown at page one. Health centers electronically report the individual cases to Tokyo Metropolitan Infectious Disease Surveillance Center.

The infectious diseases required to be reported by the sentinels

The numbers of patients who visit the sentinel clinics or hospitals during a week are reported to health centers in Tokyo. And they electronically report the numbers to Tokyo Metropolitan Infectious Disease Surveillance Center. We have about 400 sentinel clinics and hospitals in Tokyo.

1st Week is early January and 52nd Week is end of December.

Tokyo Metropolitan Institute of Public Health
Epidemiological Information Office

TEL:81-3-3363-3213 FAX:81-3-5332-7365
e-mail:idsc@tokyo-eiken.go.jp
URL:idsc.tokyo-eiken.go.jp/

Number of patients with the diseases which all physicians must report

Category	Diseases	Tokyo				Cum 2010	Japan	
		1st	2nd	3rd	4th		4th	Cum 2010
I	Ebola hemorrhagic fever							
	Crimean-Congo hemorrhagic fever							
	Smallpox							
	South American hemorrhagic fever							
	Plague							
	Marburg disease							
	Lassa fever							
II	Acute poliomyelitis							
	Tuberculosis	79	61	81	41	262	244	1345
	Diphtheria							
	Severe Acute Respiratory Syndrome(SARS)							
	Avian influenza H5N1							
III	Cholera			1		1		1
	Shigellosis	2	1	4	1	8	3	16
	Enterohemorrhagic Escherichia coli infection	2	1	2	5	10	19	88
	Typhoid fever							1
	Paratyphoid fever							
IV	Hepatitis E						1	2
	West Nile fever							
	Hepatitis A	1			1	2	2	6
	Echinococcosis							1
	Yellow fever							
	Psittacosis							
	Omsk hemorrhagic fever							
	Relapsing fever							
	Kyasanur forest disease							
	Q fever							
	Rabies							
	Coccidioidomycosis							
	Monkeypox							
	Hemorrhagic fever with renal syndrome							
	Western equine encephalitis							
	Tick-borne encephalitis							
	Anthrax							
	Scrub typhus(Tsutsugamushi disease)	1				1	6	18
	Dengue fever						2	3
	Eastern equine encephalitis							
	Avian influenza (excluding H5N1)							
	Nipah virus infection							
	Japanese spotted fever				1	1	1	1
	Japanese encephalitis							
	Epidemic typhus							
	Hantavirus pulmonary syndrome							
	Herpes B virus infection							
	Glanders							
	Brucellosis							
	Venezuelan equine encephalitis							
	Hendra virus infection							
Botulism								
Malaria	1		2		3	1	6	
Tularemia								
Lyme disease							2	
Lyssavirus infection(excluding rabies)								
Rift valley fever								
Melioidosis						1	1	
Legionellosis	1	1	1		3	9	41	
Leptospirosis								
Rocky mountain spotted fever								

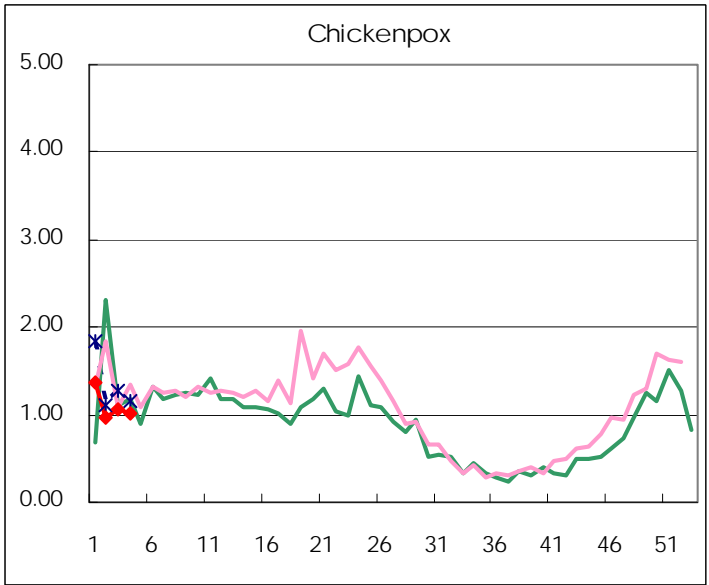
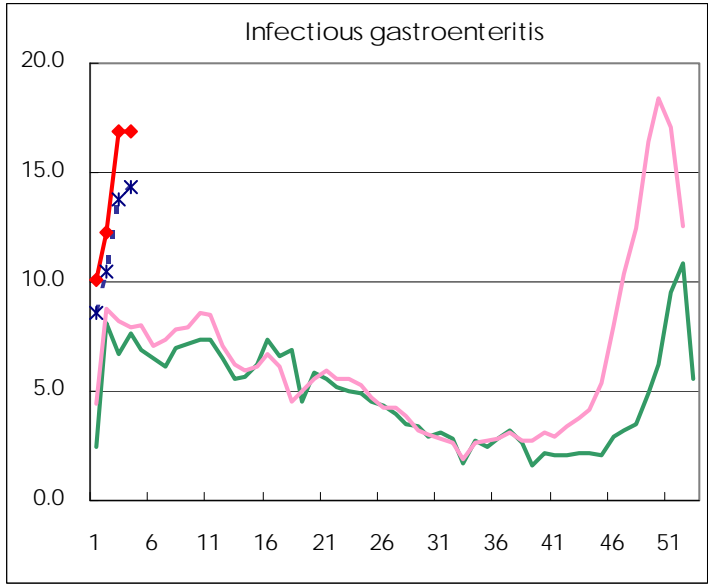
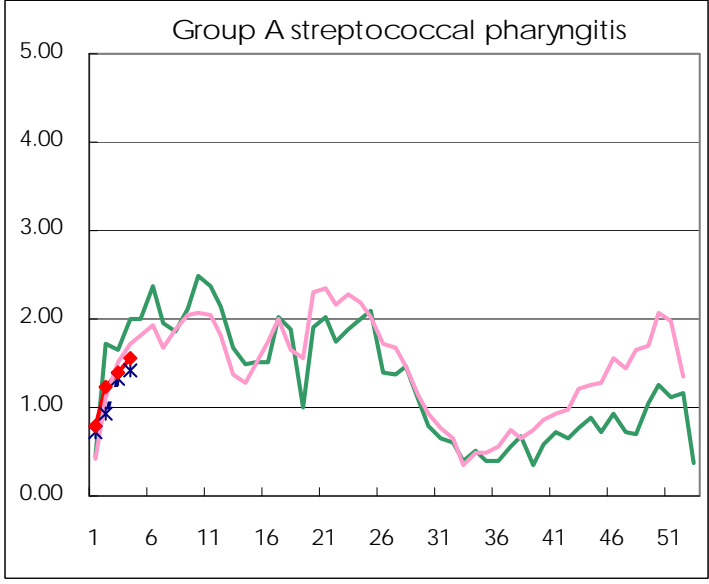
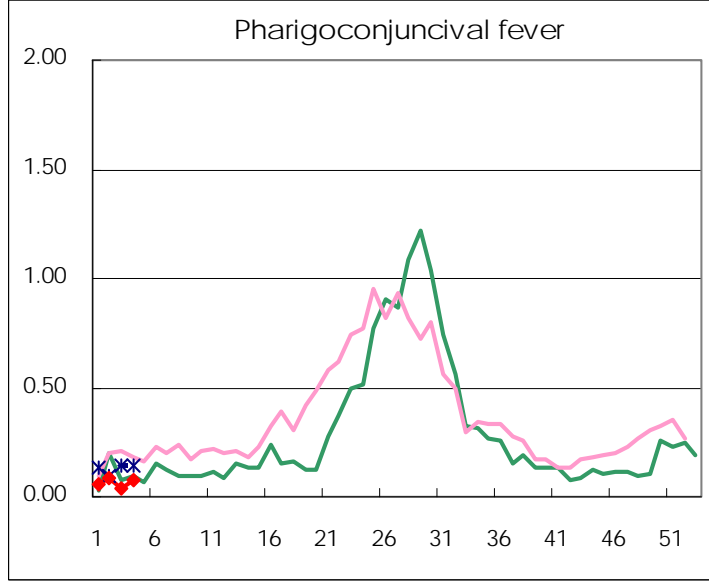
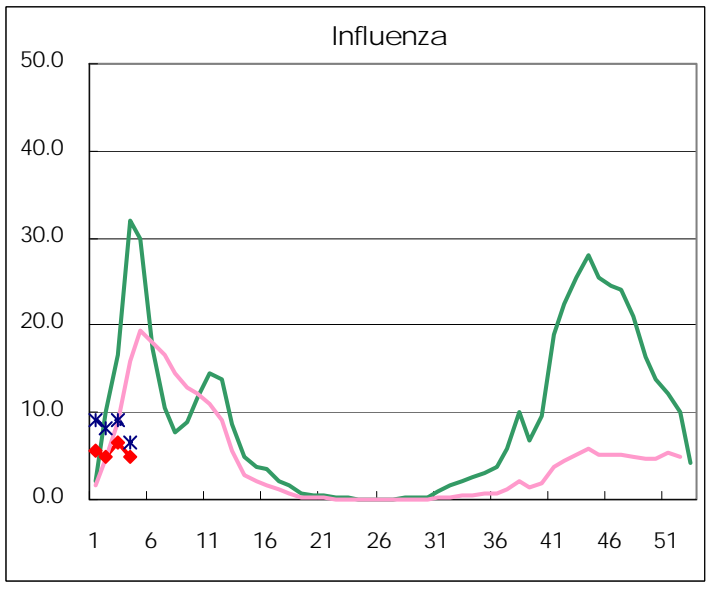
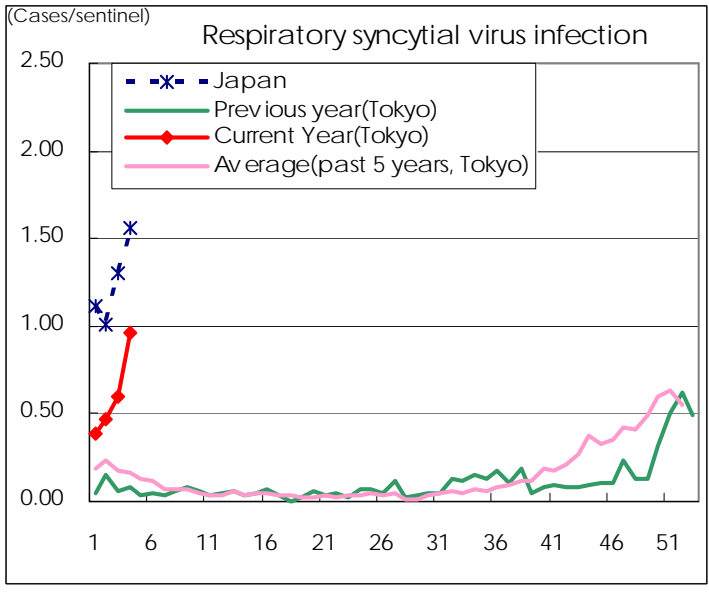
Category	Diseases	Tokyo					Japan	
		1st	2nd	3rd	4th	Cum 2010	4th	Cum 2010
V	Amebiasis	3	3	4	3	13	12	60
	Viral hepatitis(excluding hepatitis A and E)						1	4
	Acute encephalitis(excluding JE and WNE)	1				1	4	26
	Cryptosporidiosis	1				1		1
	Creutzfeldt-Jakob disease	1				1	1	7
	Severe invasive streptococcal infections(TSLS)						1	13
	Acquired immunodeficiency syndrome (AIDS)	9	7	7		23	8	66
	Giardiasis	1				1		3
	Meningococcal meningitis							
	Congenital rubella syndrome							
	Syphilis	1	3	2	5	11	12	37
	Tetanus							4
	Vancomycin-resistant S. aureus infection							
	Vancomycin-resistant Enterococcus infection	1				1		3
	Rubella				1	1	1	6
Measles	1		1		2	5	28	
Novel Flu	Novel influenza (swine-origin influenza A/H1N1)	—	—	—	—		—	

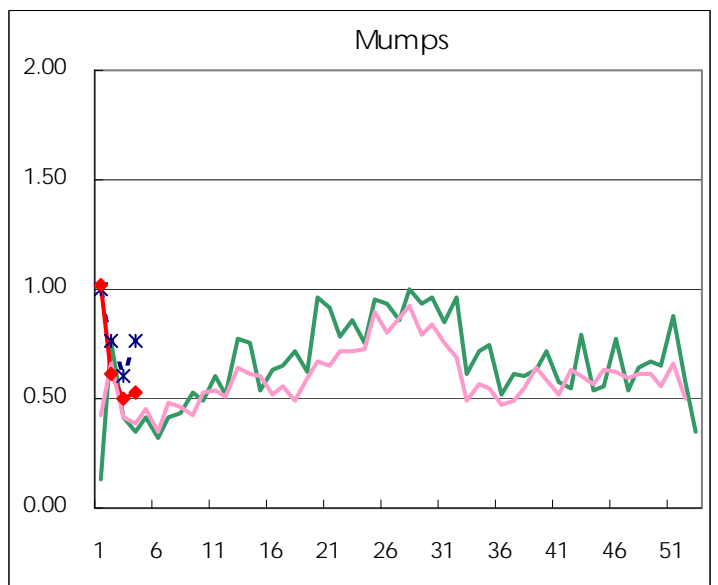
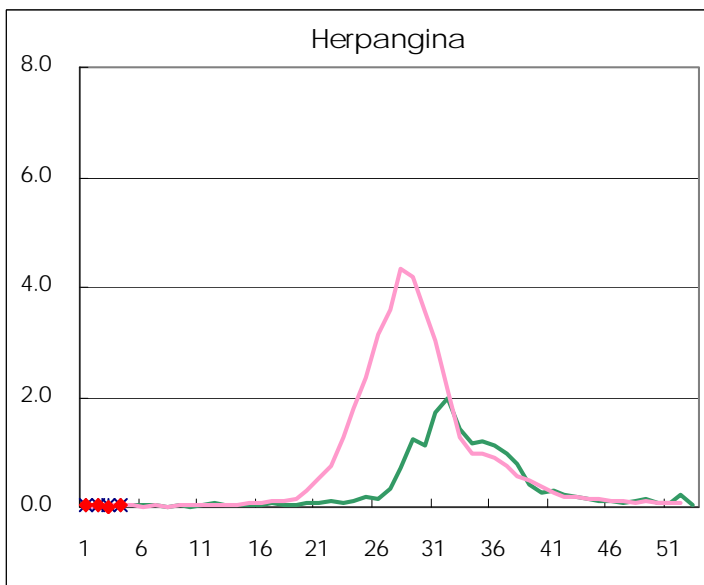
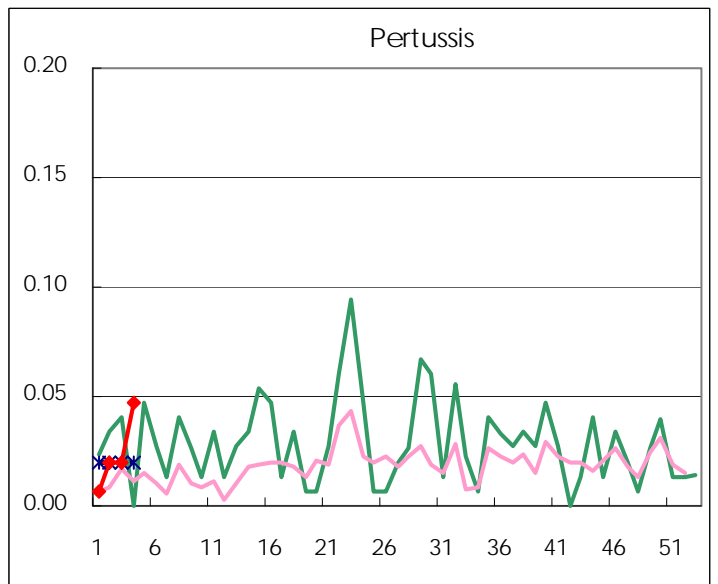
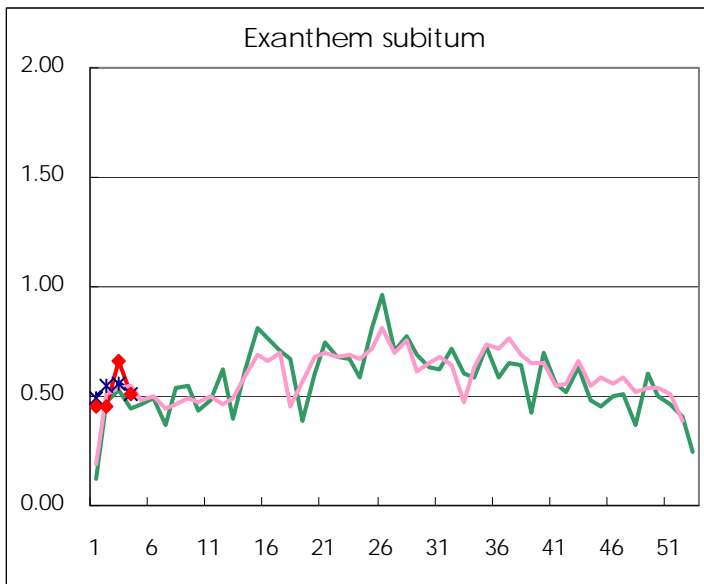
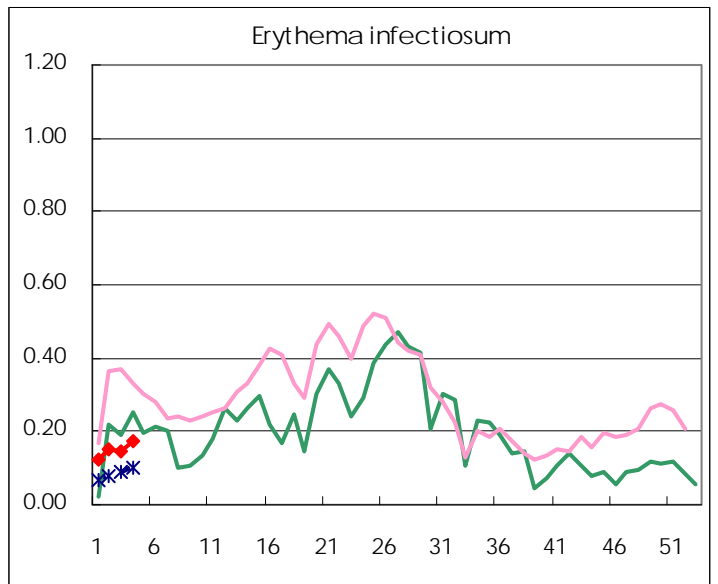
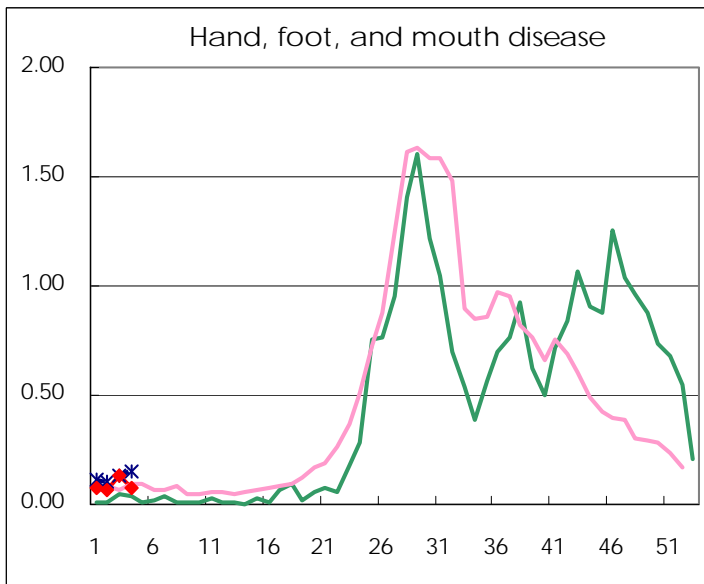
Number of patients with the diseases to be reported
by the designated clinics and hospitals

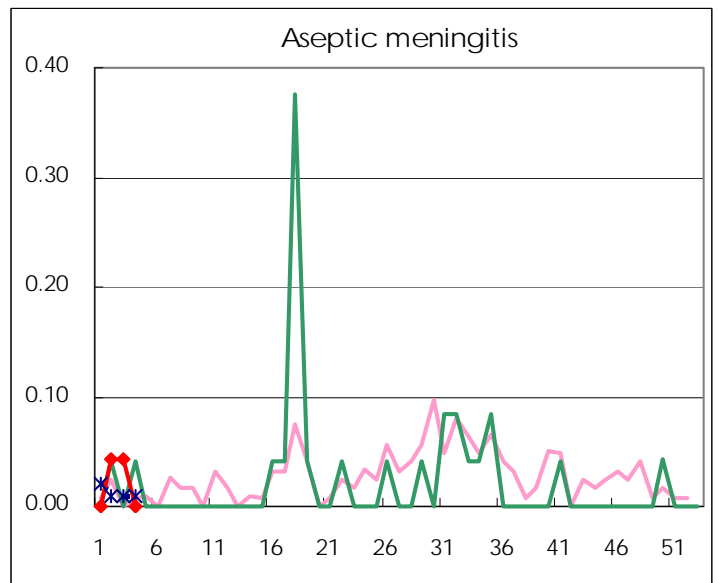
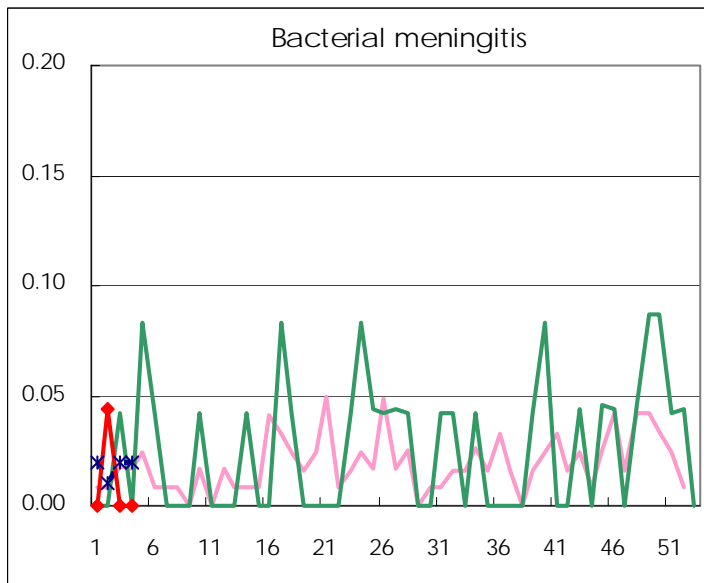
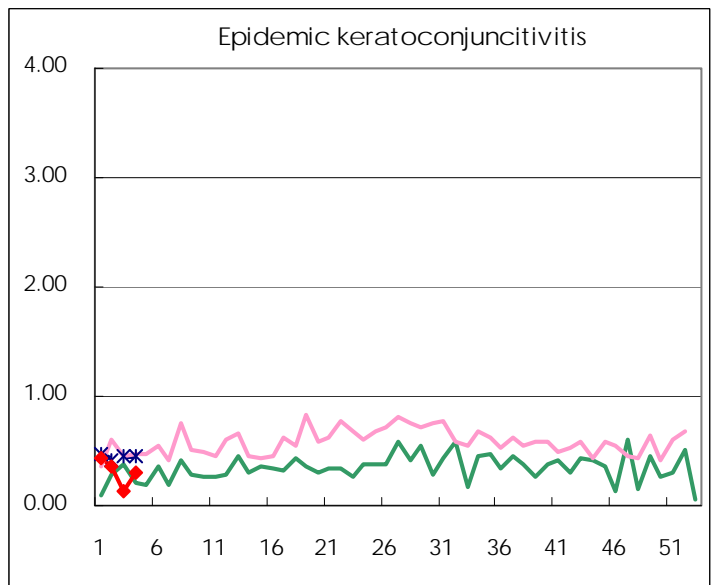
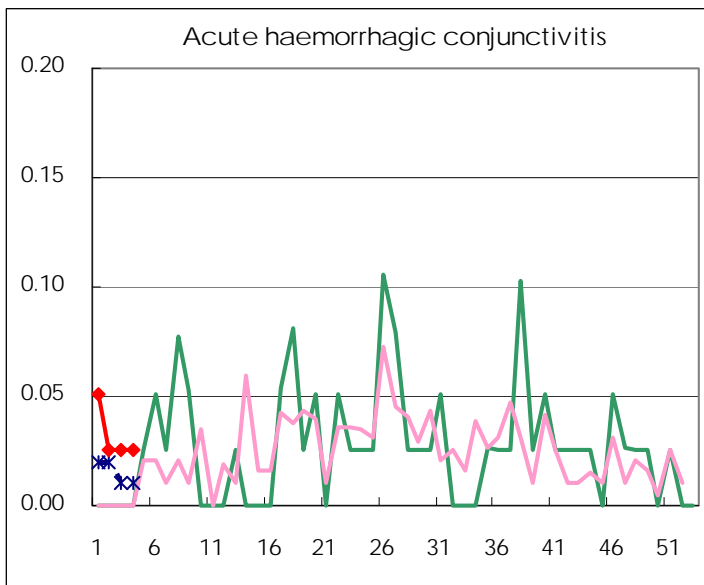
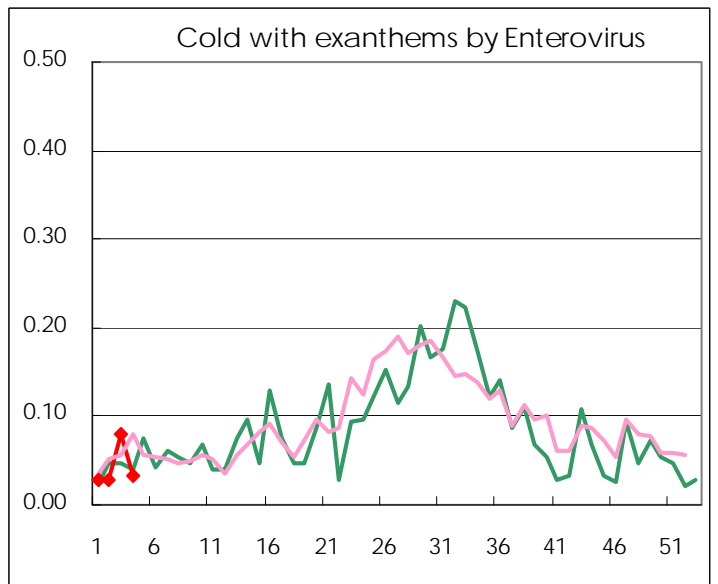
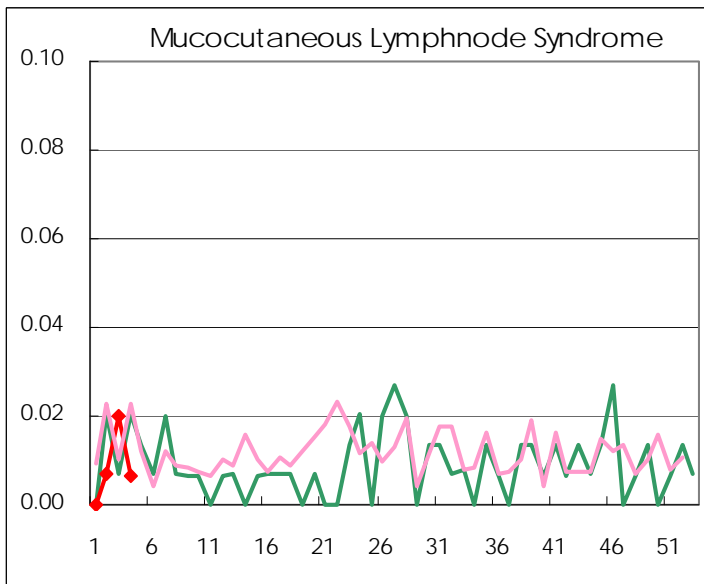
Diseases	2009-2010				
	1st	2nd	3rd	4th	/sentinel
Respiratory syncytial virus infection	58	69	89	143	0.96
Pharyngoconjunctival fever	9	12	5	11	0.07
Group A streptococcal pharyngitis	116	183	207	233	1.56
Infectious gastroenteritis	1,498	1,818	2,516	2,511	16.85
Chickenpox	203	142	158	150	1.01
Hand, foot, and mouth disease	11	10	19	11	0.07
Erythema infectiosum	18	22	22	26	0.17
Exanthem subitum	67	67	98	76	0.51
Pertussis	1	3	3	7	0.05
Herpangina	3	3	1	3	0.02
Mumps	151	91	74	79	0.53
Cold with exanthems by Enterovirus	4	4	12	5	0.03
Mucocutaneous Lymphnode Syndrome		1	3	1	0.01
Influenza	1,598	1,388	1,908	1,441	5.00
Acute hemorrhagic conjunctivitis	2	1	1	1	0.03
Epidemic keratoconjunctivitis	17	14	5	12	0.31
Bacterial meningitis		1			
Aseptic meningitis		1	1		
Mycoplasma pneumonia	2	3	6	7	0.29
Chlamydial pneumonia (excluding psittacosis)	2		1	2	0.08

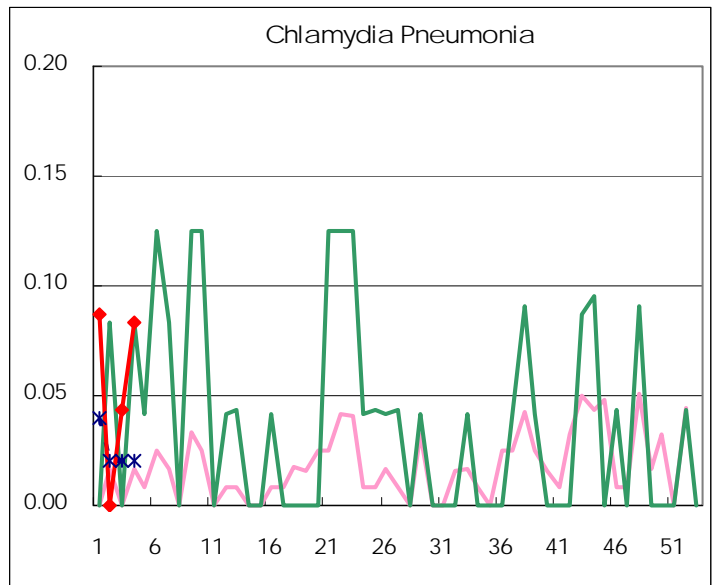
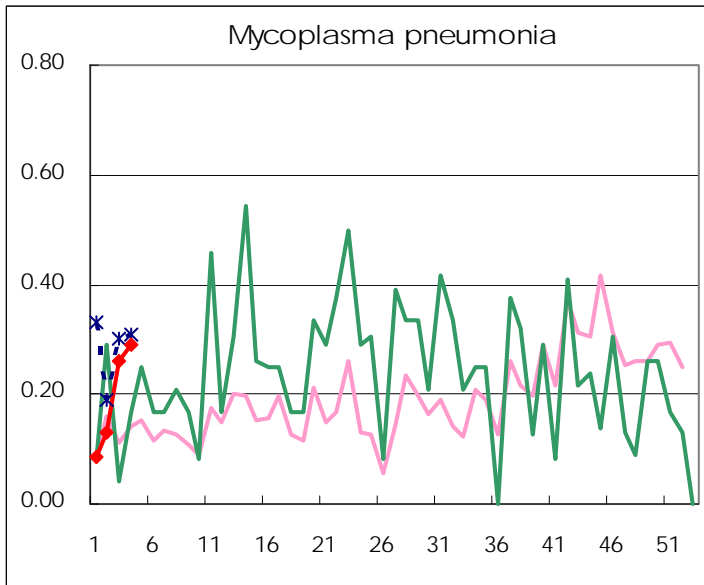
(Blank means 0.)

Disease Trend Graph (weekly reported cases per sentinel in comparison)









Number of sentinel facilities for weekly reporting		
Types of sentinels	Number of sentinels	Sentinels having reported
Pediatric	150	149
Influenza	290	288
Ophthalmic	39	39
Specially-designated	24	24

Tokyo Metropolitan Government
Infectious Disease Surveillance Center