

---

INFECTIOUS DISEASES WEEKLY REPORT

# TOKYO IDWR

Tokyo Metropolitan Infectious Disease Surveillance Center

## 25 February 2010 / Number 7

### Surveillance System in Tokyo, Japan

The infectious diseases which all physicians must report

All physicians must report to health centers the incidence of the diseases which are shown at page one. Health centers electronically report the individual cases to Tokyo Metropolitan Infectious Disease Surveillance Center.

The infectious diseases required to be reported by the sentinels

The numbers of patients who visit the sentinel clinics or hospitals during a week are reported to health centers in Tokyo. And they electronically report the numbers to Tokyo Metropolitan Infectious Disease Surveillance Center. We have about 400 sentinel clinics and hospitals in Tokyo.

1st Week is early January and 52nd Week is end of December.

Tokyo Metropolitan Institute of Public Health  
Epidemiological Information Office

TEL:81-3-3363-3213 FAX:81-3-5332-7365

e-mail:[idsc@tokyo-eiken.go.jp](mailto:idsc@tokyo-eiken.go.jp)

URL:[idsc.tokyo-eiken.go.jp/](http://idsc.tokyo-eiken.go.jp/)

---

## Number of patients with the diseases which all physicians must report

Category	Diseases	Tokyo				Japan		
		4th	5th	6th	7th	Cum 2010	7th	Cum 2010
I	Ebola hemorrhagic fever							
	Crimean-Congo hemorrhagic fever							
	Smallpox							
	South American hemorrhagic fever							
	Plague							
	Marburg disease							
	Lassa fever							
II	Acute poliomyelitis							
	Tuberculosis	88	62	67	56	411	277	2666
	Diphtheria							
	Severe Acute Respiratory Syndrome(SARS)							
	Avian influenza H5N1							
III	Cholera	1				1		1
	Shigellosis	4	1	2		12	1	26
	Enterohemorrhagic Escherichia coli infection	2	6	11	2	23	17	149
	Typhoid fever							2
	Paratyphoid fever							
IV	Hepatitis E				1	1	1	8
	West Nile fever							
	Hepatitis A		1	2		5	3	28
	Echinococcosis							1
	Yellow fever							
	Psittacosis							
	Omsk hemorrhagic fever							
	Relapsing fever							
	Kyasanur forest disease							
	Q fever							
	Rabies							
	Coccidioidomycosis							
	Monkeypox							
	Hemorrhagic fever with renal syndrome							
	Western equine encephalitis							
	Tick-borne encephalitis							
	Anthrax							
	Scrub typhus(Tsutsugamushi disease)					3		26
	Dengue fever			3		3	1	8
	Eastern equine encephalitis							
	Avian influenza (excluding H5N1)							
	Nipah virus infection							
	Japanese spotted fever		1			1		1
	Japanese encephalitis							
	Epidemic typhus							
	Hantavirus pulmonary syndrome							
	Herpes B virus infection							
	Glanders							
	Brucellosis							
	Venezuelan equine encephalitis							
Hendra virus infection								
Botulism								
Malaria	2			1	3		9	
Tularemia								
Lyme disease							3	
Lyssavirus infection(excluding rabies)								
Rift valley fever								
Melioidosis				1		1	2	
Legionellosis	1		2		5	5	69	
Leptospirosis								
Rocky mountain spotted fever								

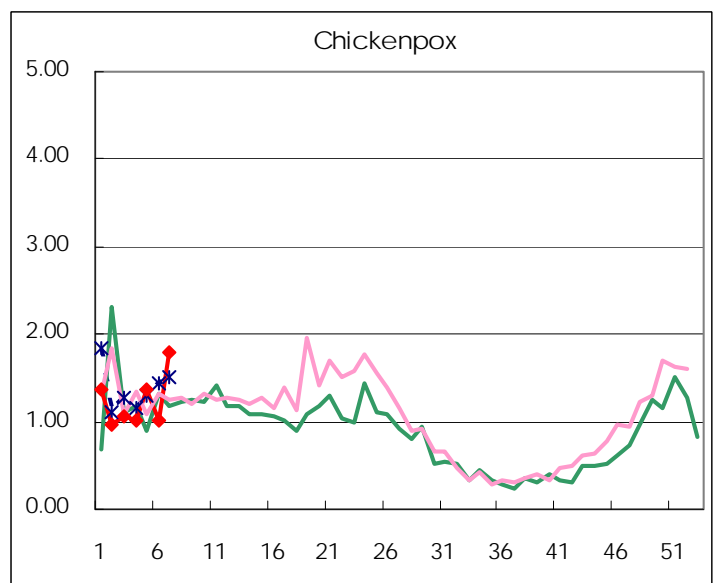
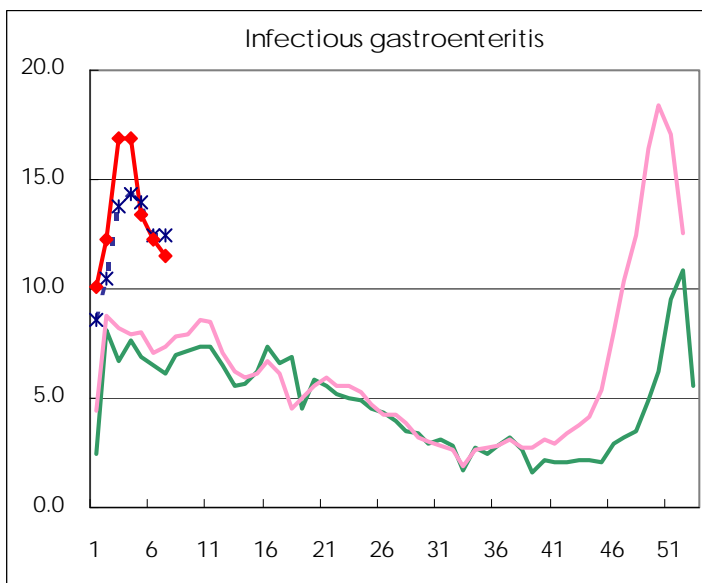
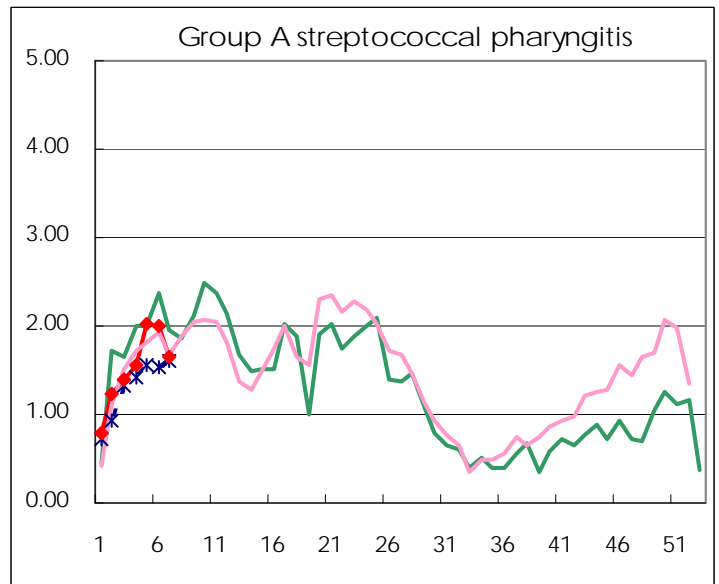
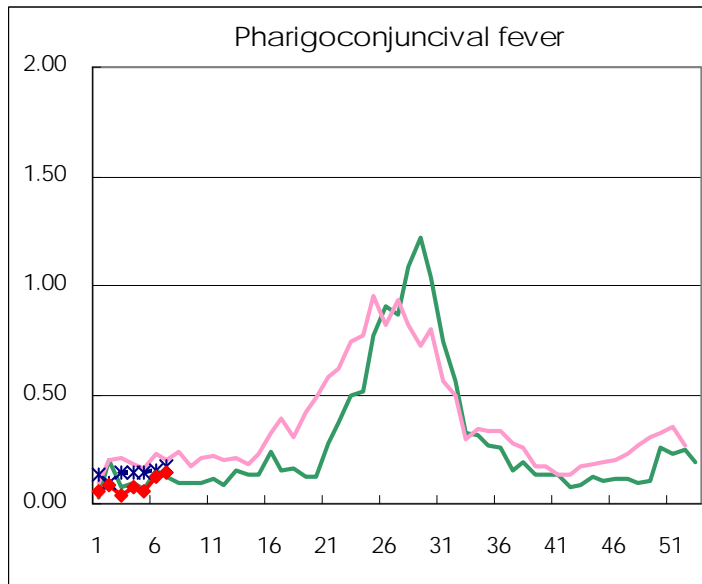
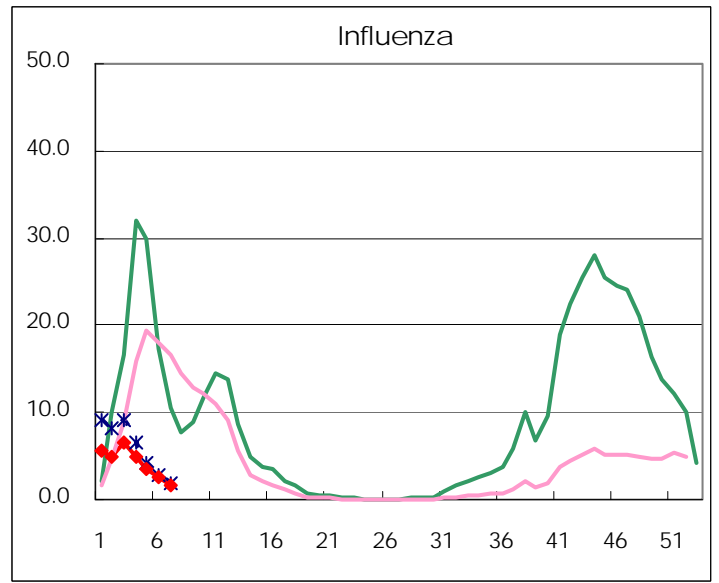
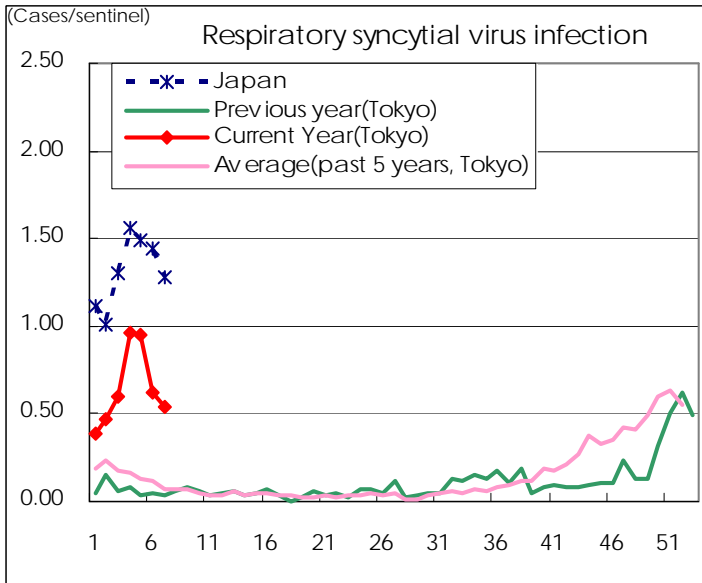
Category	Diseases	Tokyo					Japan	
		4th	5th	6th	7th	Cum 2010	7th	Cum 2010
V	Amebiasis	4	3	2	2	16	10	105
	Viral hepatitis(excluding hepatitis A and E)				1	4	3	14
	Acute encephalitis(excluding JE and WNE)				2	1	2	46
	Cryptosporidiosis					1		1
	Creutzfeldt-Jakob disease					1	2	14
	Severe invasive streptococcal infections(TSLS)				2		2	23
	Acquired immunodeficiency syndrome (AIDS)	7		14	12	45	11	153
	Giardiasis					2	1	7
	Meningococcal meningitis							
	Congenital rubella syndrome							
	Syphilis	2	5	1	5	14	12	68
	Tetanus							6
	Vancomycin-resistant S. aureus infection							
	Vancomycin-resistant Enterococcus infection				1	2	1	10
	Rubella		1			1		11
Measles	1		2	2	5	11	64	
Novel Flu	Novel influenza (swine-origin influenza A/H1N1)	—	—	—	—		—	

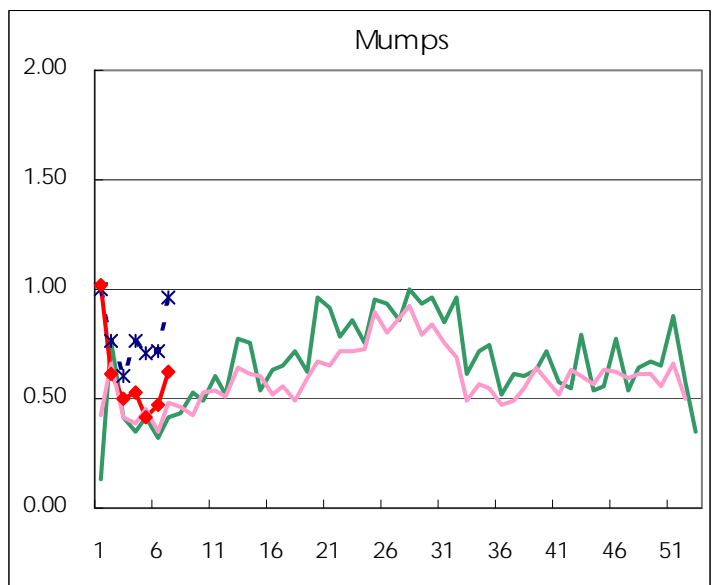
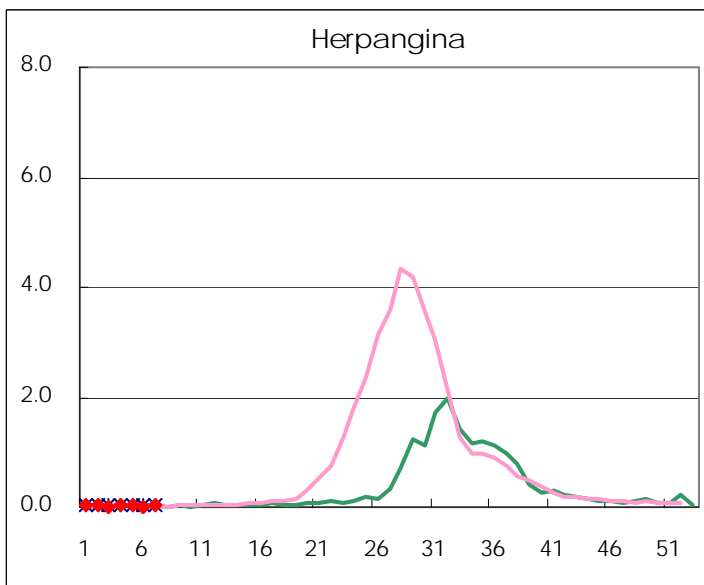
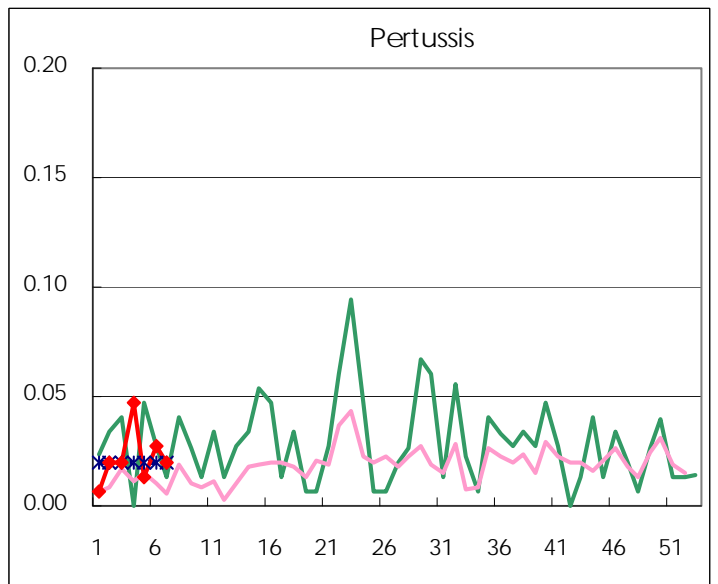
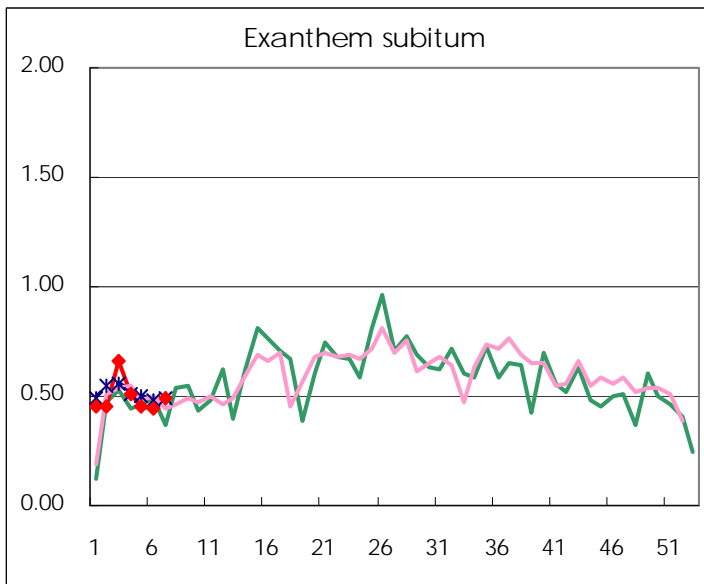
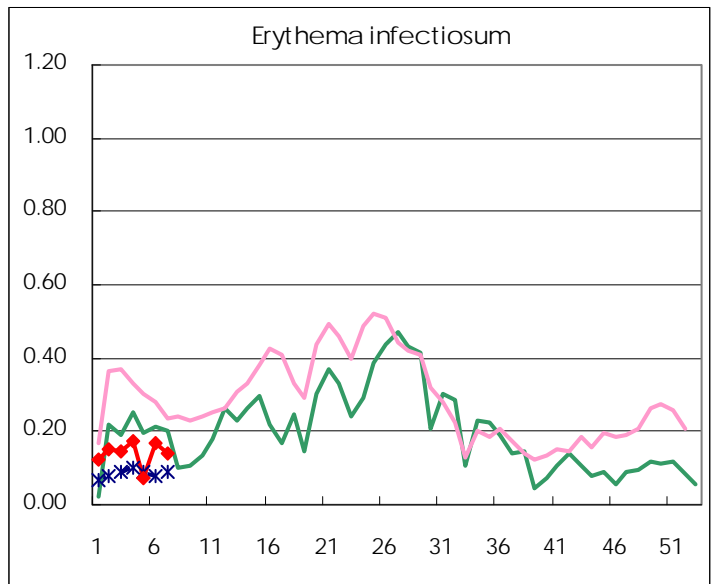
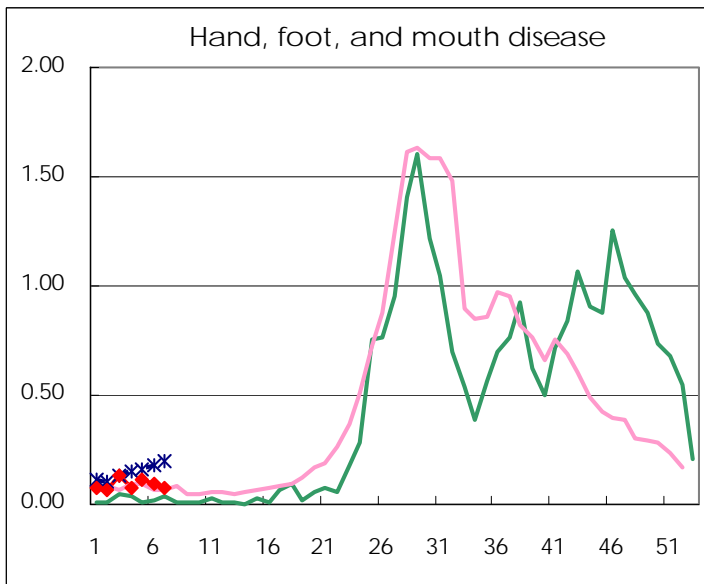
Number of patients with the diseases to be reported  
by the designated clinics and hospitals

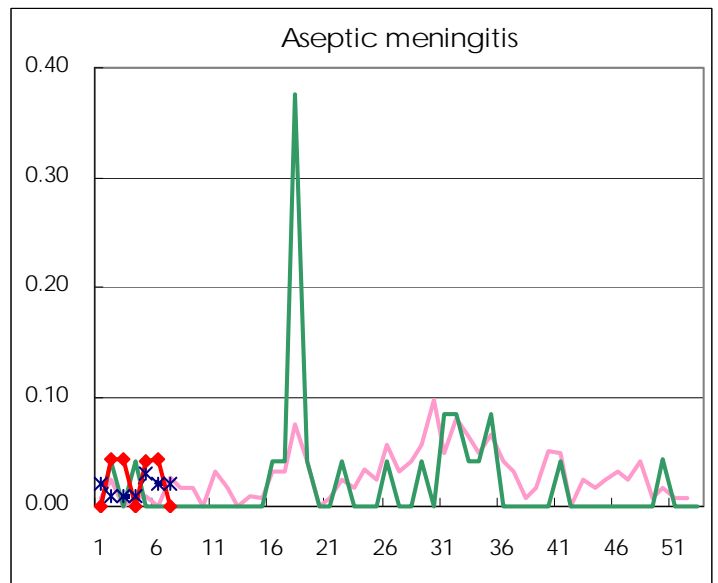
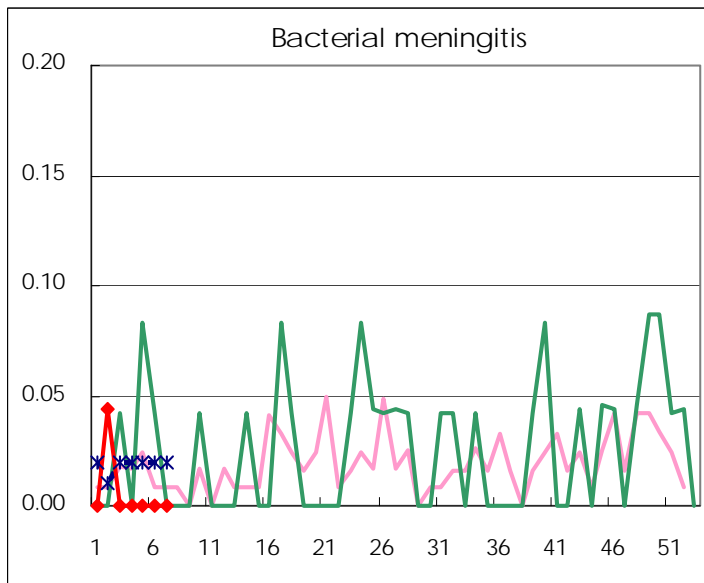
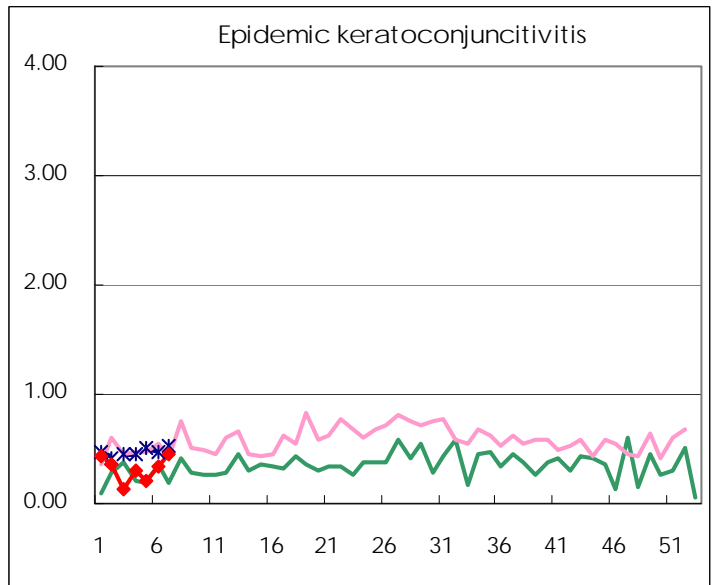
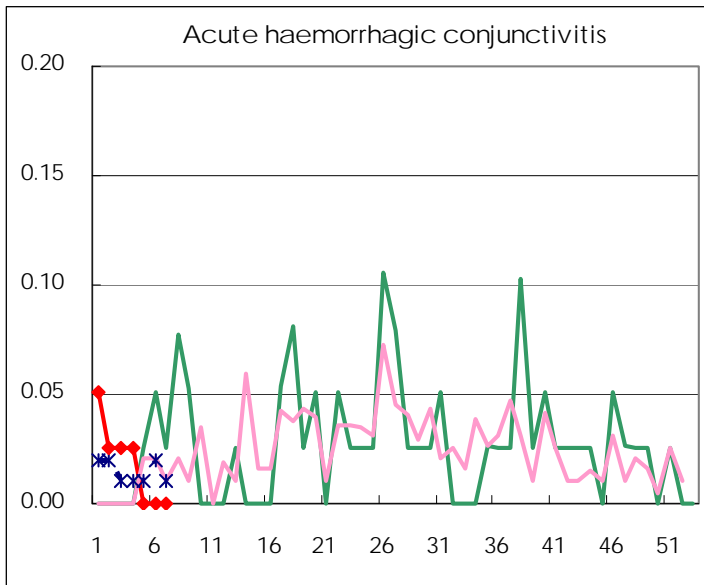
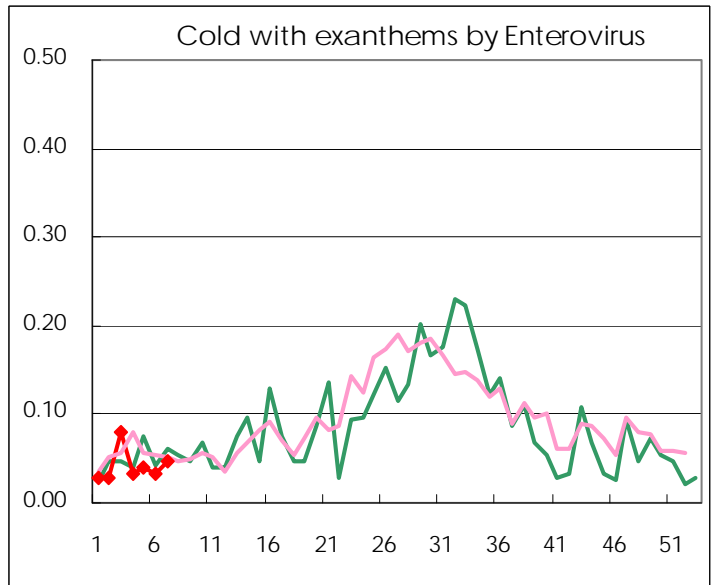
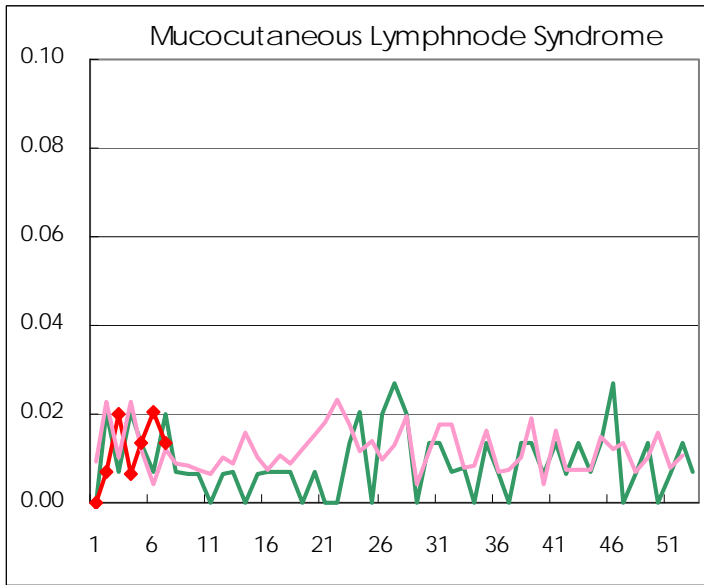
Diseases	2010				
	4th	5th	6th	7th	/sentinel
Respiratory syncytial virus infection	143	141	91	80	0.54
Pharyngoconjunctival fever	11	9	18	21	0.14
Group A streptococcal pharyngitis	233	298	294	243	1.64
Infectious gastroenteritis	2,511	1,985	1,796	1,710	11.55
Chickenpox	150	202	149	266	1.80
Hand, foot, and mouth disease	11	17	14	11	0.07
Erythema infectiosum	26	11	25	21	0.14
Exanthem subitum	76	67	65	72	0.49
Pertussis	7	2	4	3	0.02
Herpangina	3	3		3	0.02
Mumps	79	61	69	92	0.62
Cold with exanthems by Enterovirus	5	6	5	7	0.05
Mucocutaneous Lymphnode Syndrome	1	2	3	2	0.01
Influenza	1,441	988	754	483	1.68
Acute hemorrhagic conjunctivitis	1				
Epidemic keratoconjunctivitis	12	8	13	18	0.46
Bacterial meningitis					
Aseptic meningitis		1	1		
Mycoplasma pneumonia	7	7	5	4	0.17
Chlamydial pneumonia (excluding psittacosis)	2		1	1	0.04

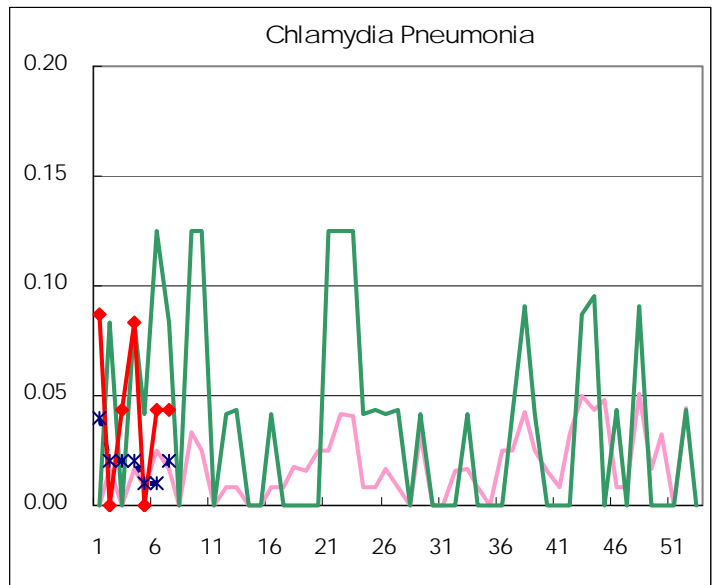
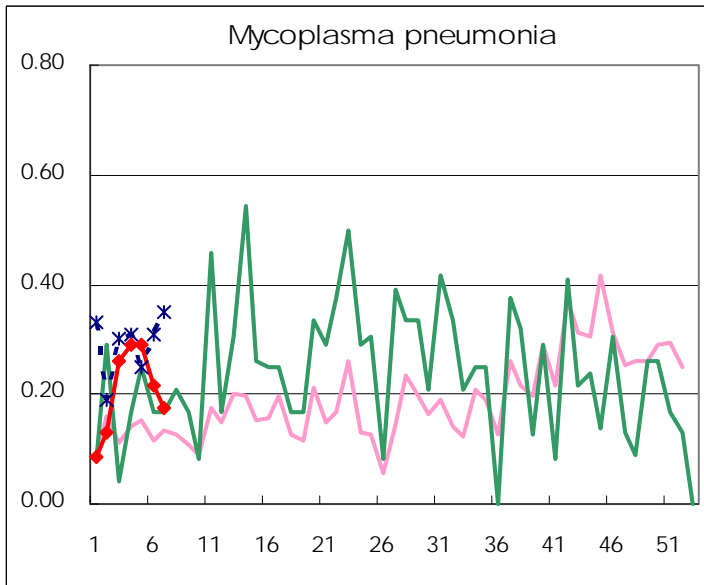
( Blank means 0. )

# Disease Trend Graph (weekly reported cases per sentinel in comparison)









Number of sentinel facilities for weekly reporting		
Types of sentinels	Number of sentinels	Sentinels having reported
Pediatric	150	148
Influenza	290	287
Ophthalmic	39	39
Specially-designated	24	23

**Tokyo Metropolitan Government**  
**Infectious Disease Surveillance Center**