
INFECTIOUS DISEASES WEEKLY REPORT

TOKYO IDWR

Tokyo Metropolitan Infectious Disease Surveillance Center

11 March 2010 / Number 9

Surveillance System in Tokyo, Japan

The infectious diseases which all physicians must report

All physicians must report to health centers the incidence of the diseases which are shown at page one. Health centers electronically report the individual cases to Tokyo Metropolitan Infectious Disease Surveillance Center.

The infectious diseases required to be reported by the sentinels

The numbers of patients who visit the sentinel clinics or hospitals during a week are reported to health centers in Tokyo. And they electronically report the numbers to Tokyo Metropolitan Infectious Disease Surveillance Center. We have about 400 sentinel clinics and hospitals in Tokyo.

1st Week is early January and 52nd Week is end of December.

Tokyo Metropolitan Institute of Public Health
Epidemiological Information Office

TEL:81-3-3363-3213 FAX:81-3-5332-7365

e-mail:idsc@tokyo-eiken.go.jp

URL:idsc.tokyo-eiken.go.jp/

Number of patients with the diseases which all physicians must report

Category	Diseases	Tokyo				Japan	
		6th	7th	8th	9th	Cum 2010	Cum 2010
I	Ebola hemorrhagic fever						
	Crimean-Congo hemorrhagic fever						
	Smallpox						
	South American hemorrhagic fever						
	Plague						
	Marburg disease						
	Lassa fever						
II	Acute poliomyelitis						1
	Tuberculosis	75	70	70	44	651	290
	Diphtheria						
	Severe Acute Respiratory Syndrome(SARS)						
	Avian influenza H5N1						
III	Cholera					1	2
	Shigellosis	3			1	14	3
	Enterohemorrhagic Escherichia coli infection	1	2	1		26	12
	Typhoid fever						2
	Paratyphoid fever			1		1	1
IV	Hepatitis E	1	1		1	3	2
	West Nile fever						
	Hepatitis A	1		1		6	30
	Echinococcosis						1
	Yellow fever						
	Psittacosis						1
	Omsk hemorrhagic fever						
	Relapsing fever						
	Kyasanur forest disease						
	Q fever						
	Rabies						
	Coccidioidomycosis						
	Monkeypox						
	Hemorrhagic fever with renal syndrome						
	Western equine encephalitis						
	Tick-borne encephalitis						
	Anthrax						
	Scrub typhus(Tsutsugamushi disease)	2				3	28
	Dengue fever					3	1
	Eastern equine encephalitis						
	Avian influenza (excluding H5N1)						
	Nipah virus infection						
	Japanese spotted fever					1	2
	Japanese encephalitis						
	Epidemic typhus						
	Hantavirus pulmonary syndrome						
	Herpes B virus infection						
	Glanders						
	Brucellosis						
	Venezuelan equine encephalitis						
Hendra virus infection							
Botulism							
Malaria		1		1	5	1	
Tularemia							
Lyme disease			1		1	3	
Lyssavirus infection(excluding rabies)							
Rift valley fever							
Melioidosis		1			1	2	
Legionellosis			1	1	7	5	
Leptospirosis						1	
Rocky mountain spotted fever							

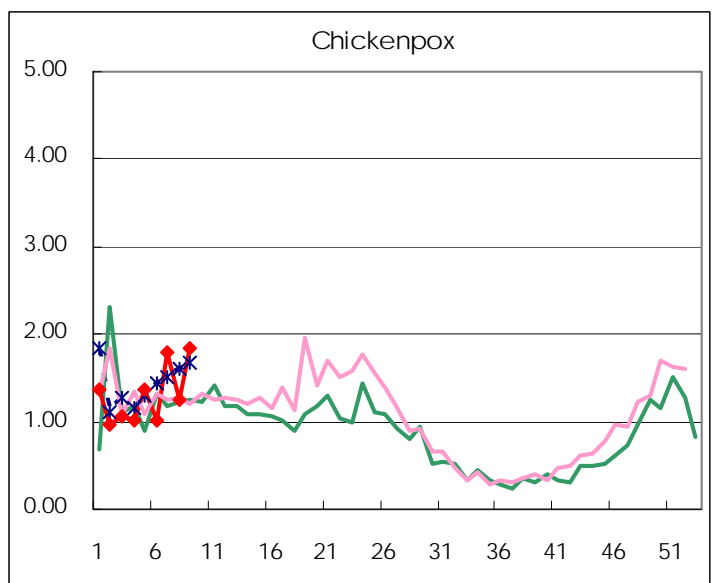
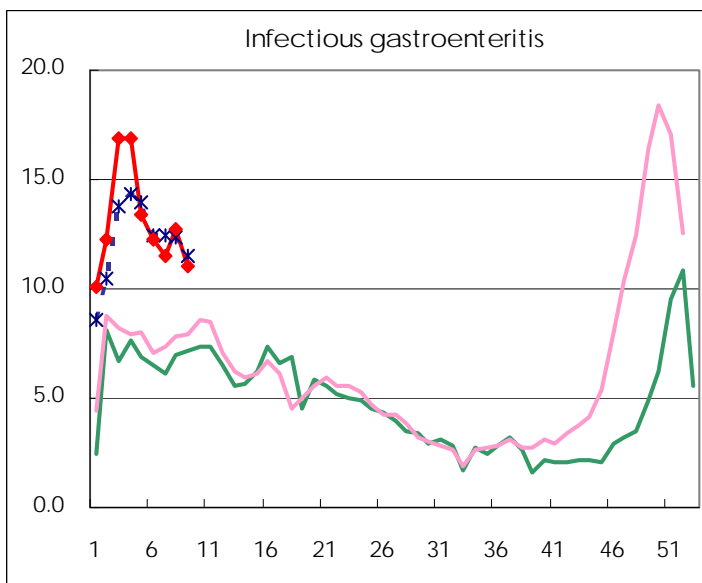
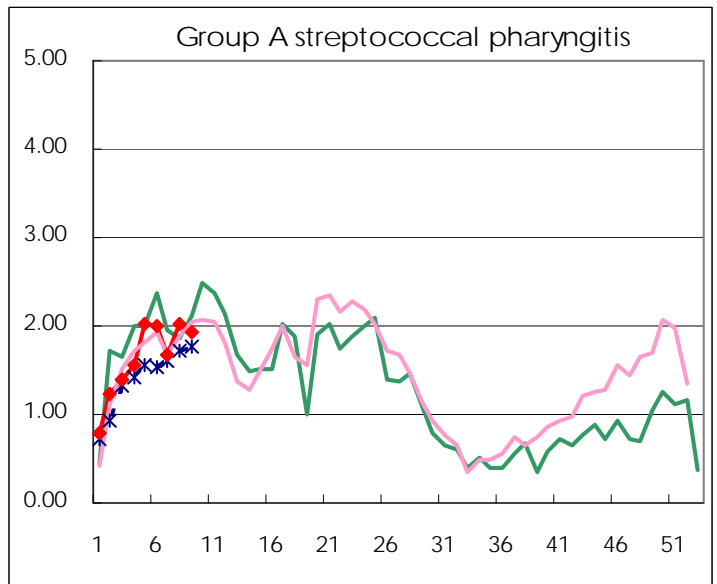
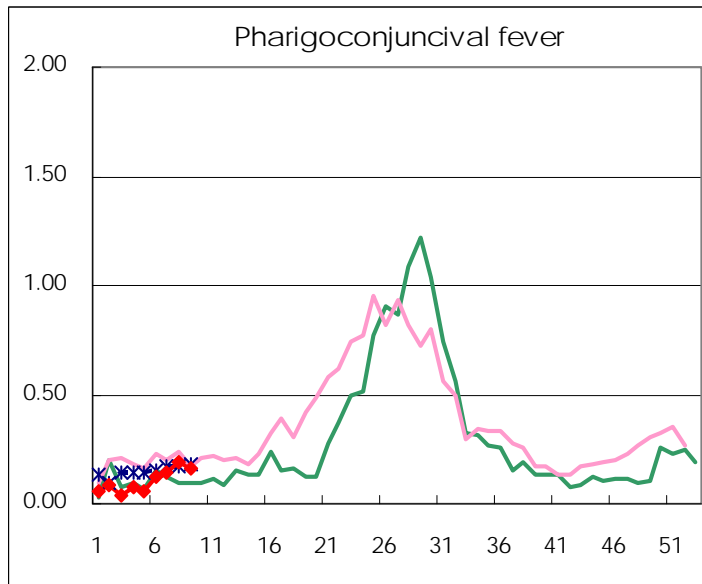
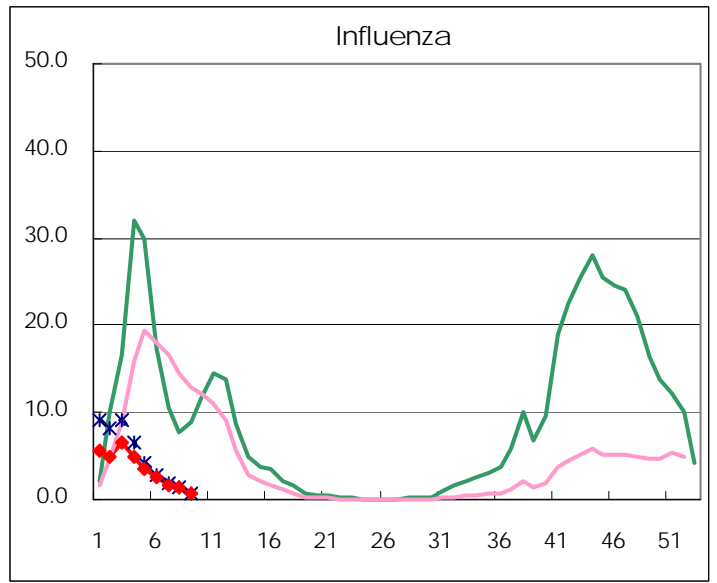
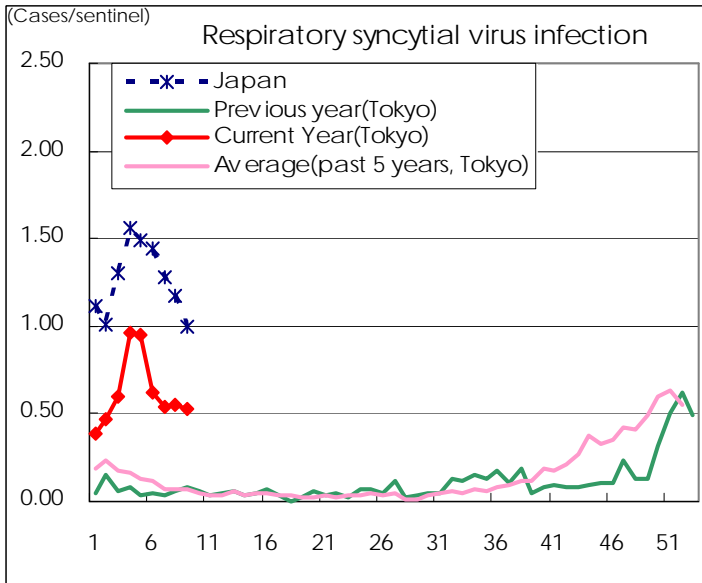
Category	Diseases	Tokyo					Japan	
		6th	7th	8th	9th	Cum 2010	9th	Cum 2010
V	Amebiasis	1	2	5	4	27	11	139
	Viral hepatitis(excluding hepatitis A and E)	4	1		3	8	2	27
	Acute encephalitis(excluding JE and WNE)		2	1		4	2	57
	Cryptosporidiosis					1		1
	Creutzfeldt-Jakob disease				1	2	1	20
	Severe invasive streptococcal infections(TSLS)		2	1	1	4	2	28
	Acquired immunodeficiency syndrome (AIDS)	9	12	13	9	80	11	213
	Giardiasis	1			1	3		12
	Meningococcal meningitis							
	Congenital rubella syndrome							
	Syphilis	2	5	2	1	22	8	85
	Tetanus						1	8
	Vancomycin-resistant S. aureus infection							
	Vancomycin-resistant Enterococcus infection	1	1			3		12
	Rubella					1	2	14
Measles	1	2		3	10	5	76	
Novel Flu	Novel influenza (swine-origin influenza A/H1N1)	—	—	—	—		—	

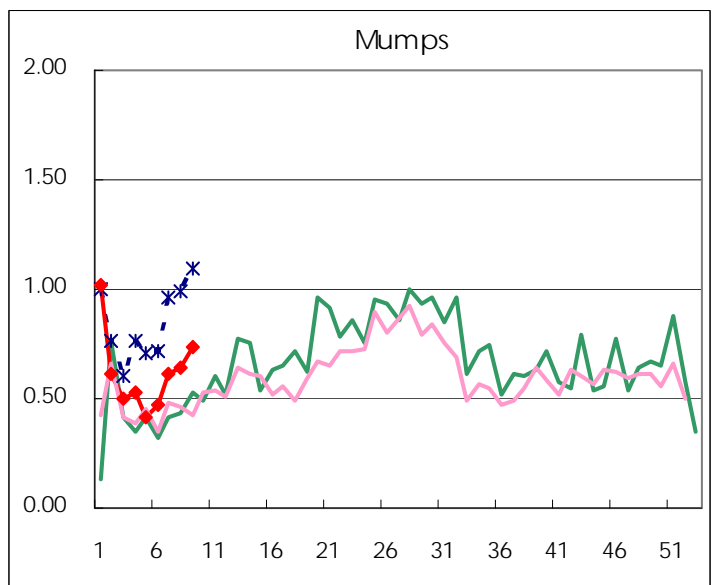
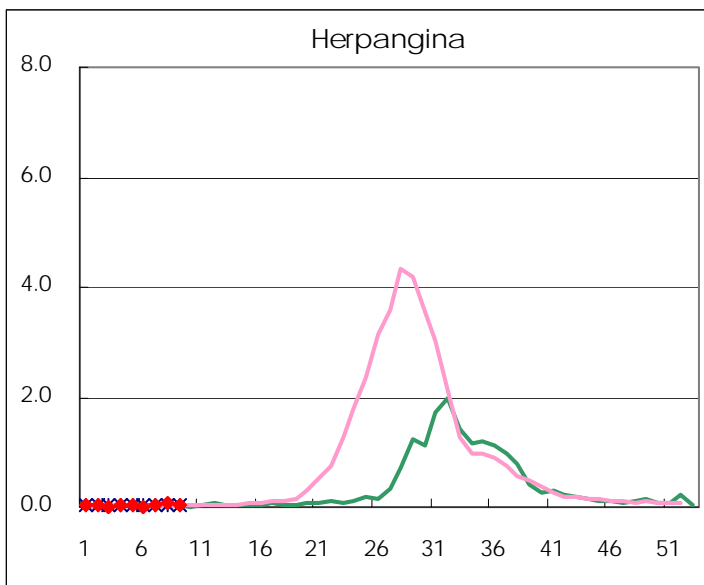
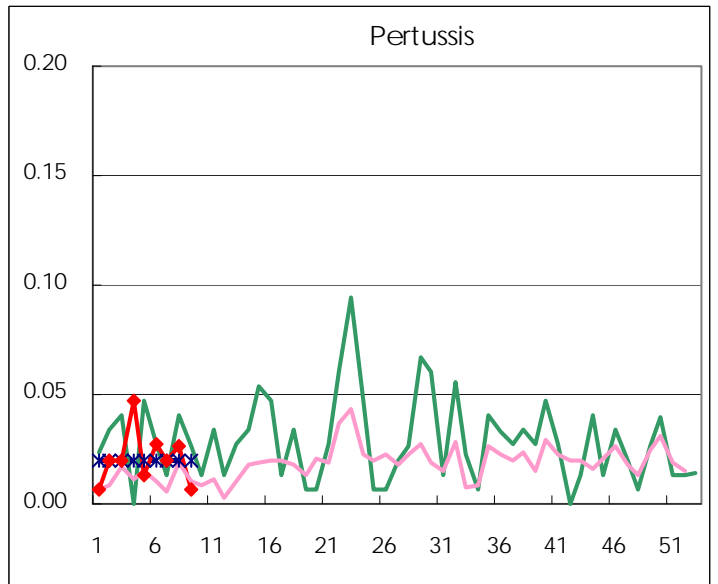
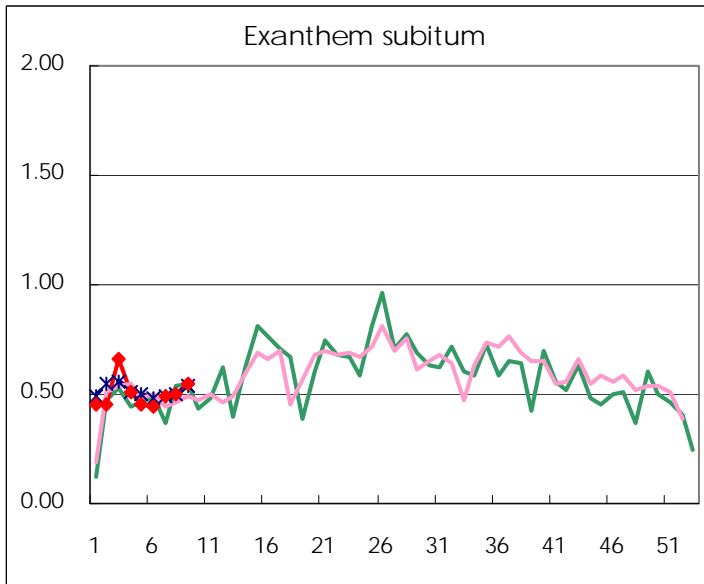
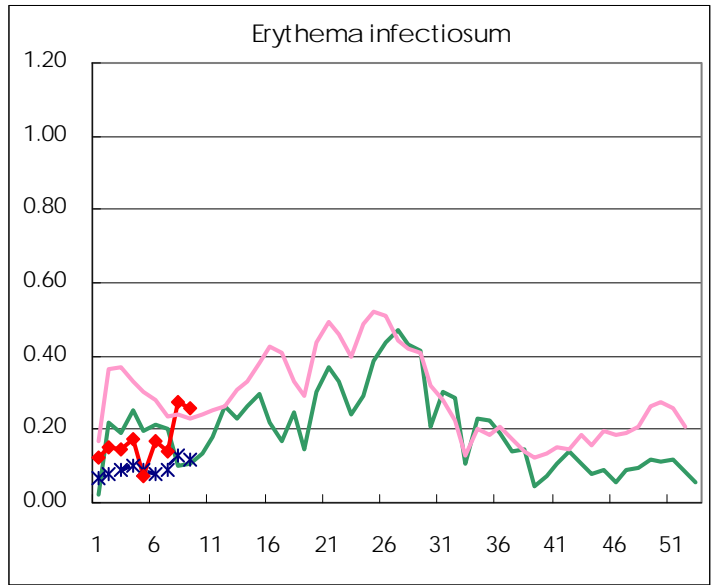
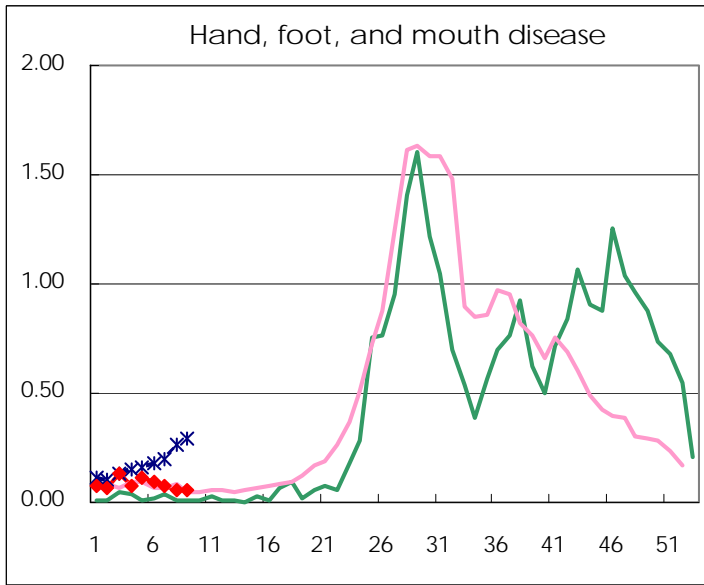
Number of patients with the diseases to be reported
by the designated clinics and hospitals

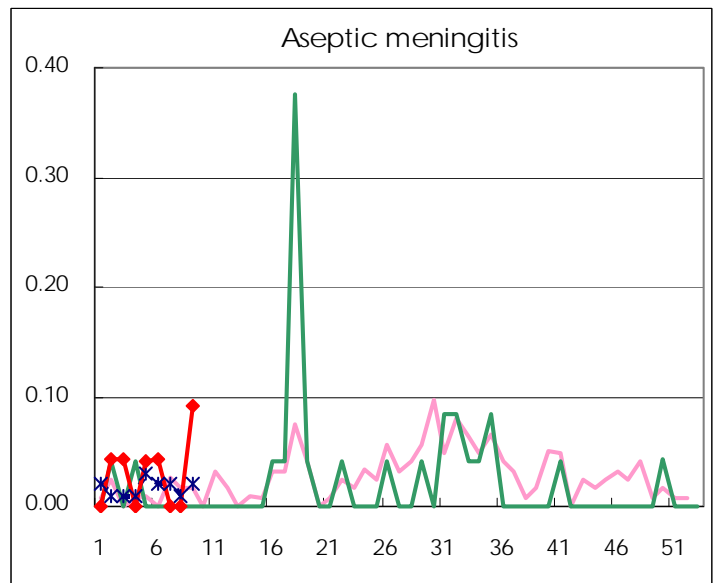
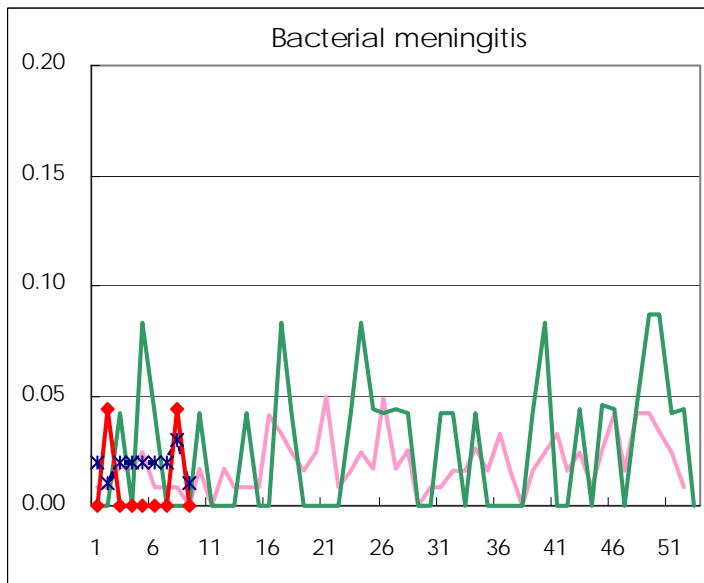
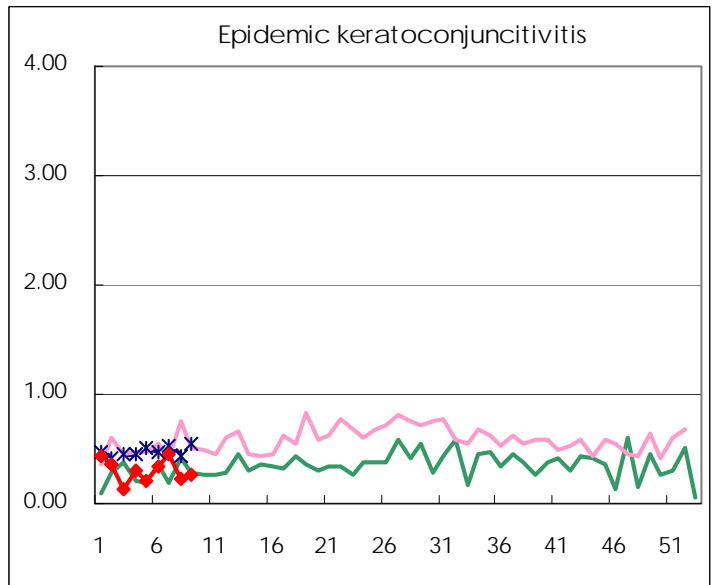
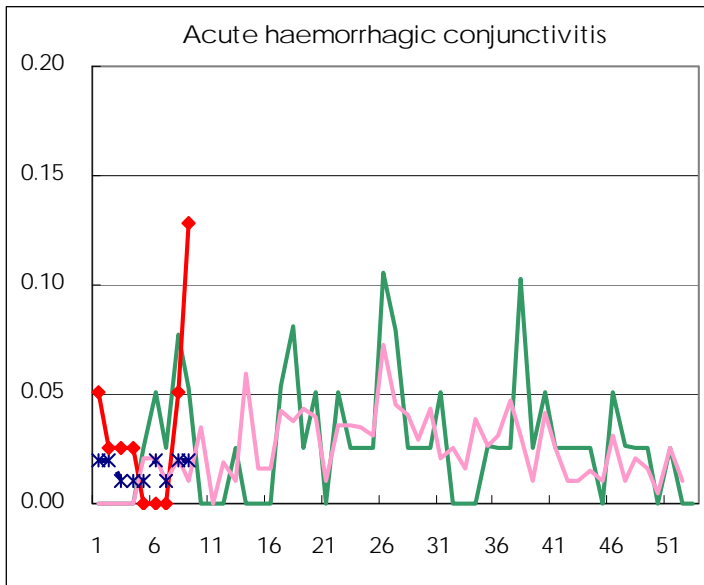
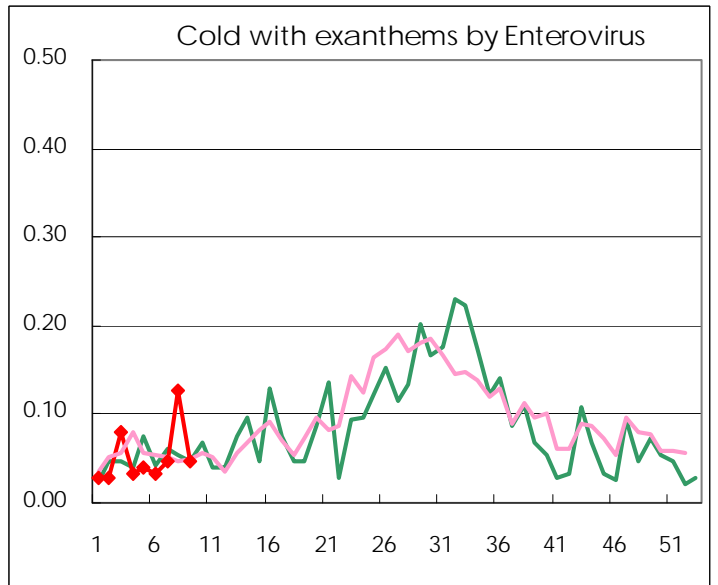
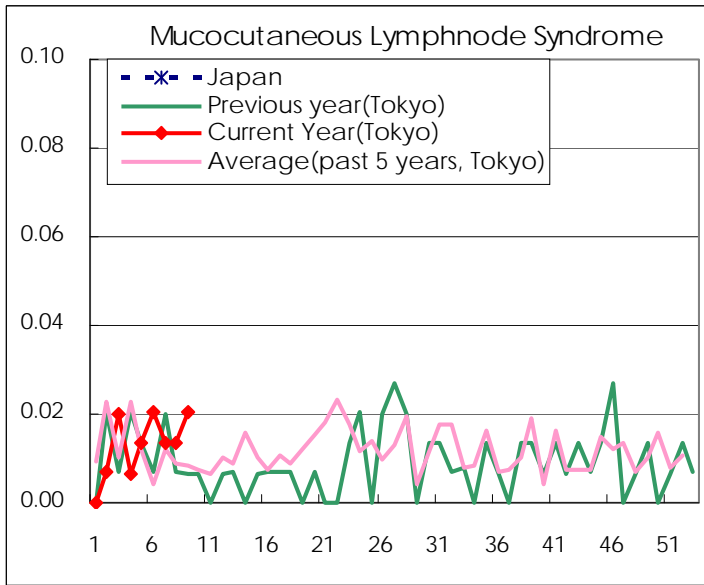
Diseases	2010				
	6th	7th	8th	9th	/sentinel
Respiratory syncytial virus infection	91	80	83	77	0.52
Pharyngoconjunctival fever	18	21	29	24	0.16
Group A streptococcal pharyngitis	294	248	301	285	1.94
Infectious gastroenteritis	1,796	1,712	1,892	1,626	11.06
Chickenpox	149	267	187	271	1.84
Hand, foot, and mouth disease	14	11	8	8	0.05
Erythema infectiosum	25	21	41	38	0.26
Exanthem subitum	65	73	75	80	0.54
Pertussis	4	3	4	1	0.01
Herpangina		3	9	7	0.05
Mumps	69	92	96	108	0.73
Cold with exanthems by Enterovirus	5	7	19	7	0.05
Mucocutaneous Lymphnode Syndrome	3	2	2	3	0.02
Influenza	754	486	405	179	0.63
Acute hemorrhagic conjunctivitis			2	5	0.13
Epidemic keratoconjunctivitis	13	18	9	10	0.26
Bacterial meningitis			1		
Aseptic meningitis	1			2	0.09
Mycoplasma pneumonia	5	4	9	8	0.36
Chlamydial pneumonia (excluding psittacosis)	1	1			

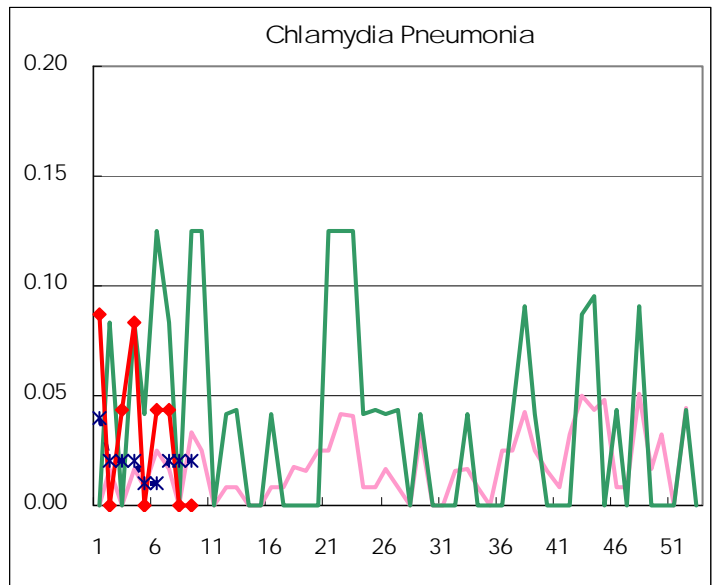
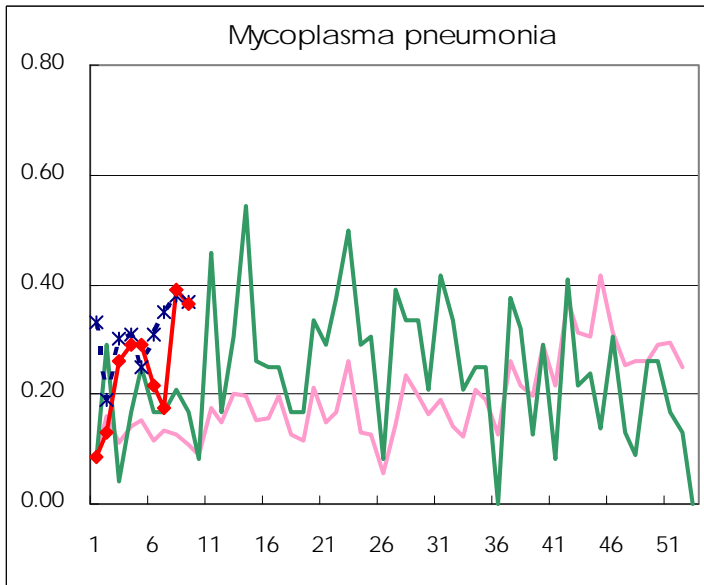
(Blank means 0.)

Disease Trend Graph (weekly reported cases per sentinel in comparison)









Number of sentinel facilities
for weekly reporting

Types of sentinels	Number of sentinels	Sentinels having reported
Pediatric	150	147
Influenza	290	286
Ophthalmic	39	39
Specially-designated	24	22

Tokyo Metropolitan Government
Infectious Disease Surveillance Center