
INFECTIOUS DISEASES WEEKLY REPORT

TOKYO IDWR

Tokyo Metropolitan Infectious Disease Surveillance Center

1 April 2010 / Number 12

Surveillance System in Tokyo, Japan

The infectious diseases which all physicians must report

All physicians must report to health centers the incidence of the diseases which are shown at page one. Health centers electronically report the individual cases to Tokyo Metropolitan Infectious Disease Surveillance Center.

The infectious diseases required to be reported by the sentinels

The numbers of patients who visit the sentinel clinics or hospitals during a week are reported to health centers in Tokyo. And they electronically report the numbers to Tokyo Metropolitan Infectious Disease Surveillance Center. We have about 400 sentinel clinics and hospitals in Tokyo.

1st Week is early January and 52nd Week is end of December.

Tokyo Metropolitan Institute of Public Health
Epidemiological Information Office

TEL:81-3-3363-3213 FAX:81-3-5332-7365
e-mail:idsc@tokyo-eiken.go.jp
URL:idsc.tokyo-eiken.go.jp/

Number of patients with the diseases which all physicians must report

Category	Diseases	Tokyo				Cum 2010	Japan	
		9th	10th	11th	12th		12th	Cum 2010
I	Ebola hemorrhagic fever							
	Crimean-Congo hemorrhagic fever							
	Smallpox							
	South American hemorrhagic fever							
	Plague							
	Marburg disease							
	Lassa fever							
II	Acute poliomyelitis							1
	Tuberculosis	75	67	63	45	784	227	4956
	Diphtheria							
	Severe Acute Respiratory Syndrome(SARS)							
	Avian influenza H5N1							
III	Cholera					1		2
	Shigellosis	1		1	2	15	2	37
	Enterohemorrhagic Escherichia coli infection		1	1	2	28	12	240
	Typhoid fever							5
	Paratyphoid fever				1	1	1	5
IV	Hepatitis E	1	1	1		5		18
	West Nile fever							
	Hepatitis A		3	4		13	13	69
	Echinococcosis							1
	Yellow fever							
	Psittacosis							1
	Omsk hemorrhagic fever							
	Relapsing fever							
	Kyasanur forest disease							
	Q fever							
	Rabies							
	Coccidioidomycosis							
	Monkeypox							
	Hemorrhagic fever with renal syndrome							
	Western equine encephalitis							
	Tick-borne encephalitis							
	Anthrax							
	Scrub typhus(Tsutsugamushi disease)					3	1	31
	Dengue fever		1	2	2	6	3	28
	Eastern equine encephalitis							
	Avian influenza (excluding H5N1)							
	Nipah virus infection							
	Japanese spotted fever					1		5
	Japanese encephalitis							
	Epidemic typhus							
	Hantavirus pulmonary syndrome							
	Herpes B virus infection							
	Glanders							
	Brucellosis							
	Venezuelan equine encephalitis							
Hendra virus infection								
Botulism								
Malaria	1				5		14	
Tularemia								
Lyme disease					1		3	
Lyssavirus infection(excluding rabies)								
Rift valley fever								
Melioidosis					1		2	
Legionellosis	1				7	9	120	
Leptospirosis			1		1		1	
Rocky mountain spotted fever								

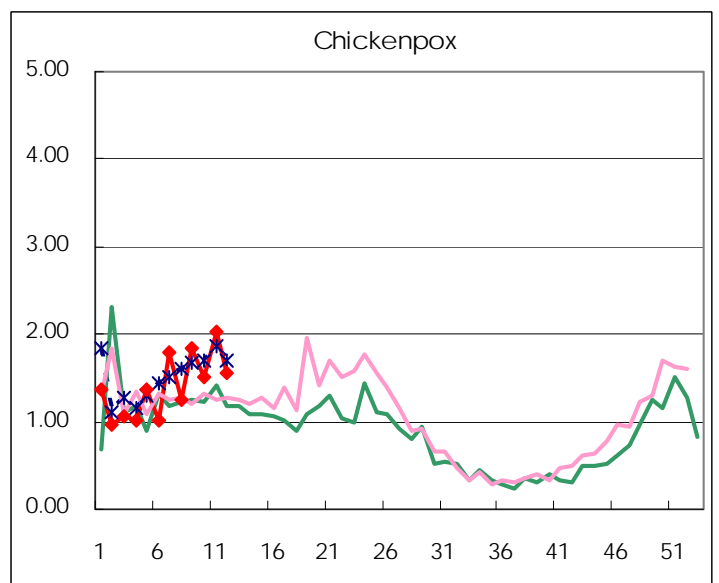
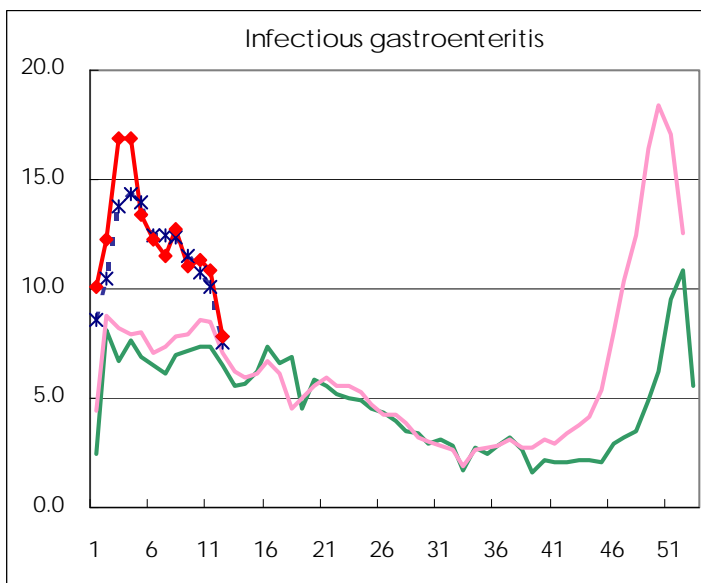
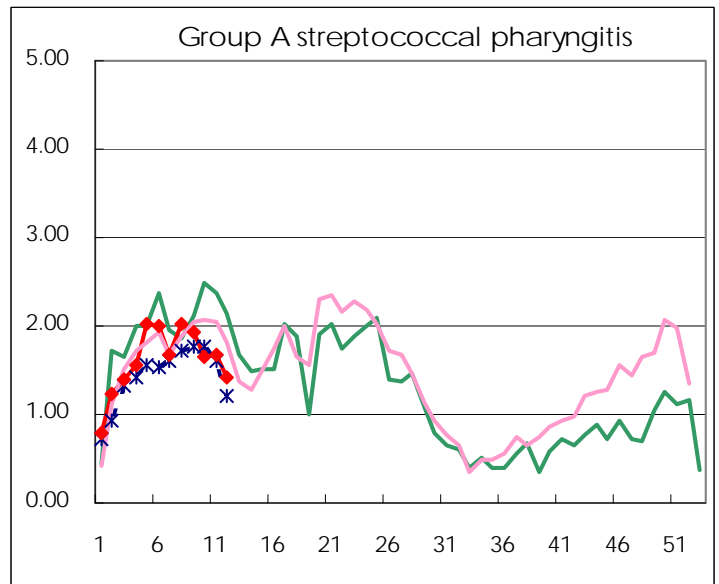
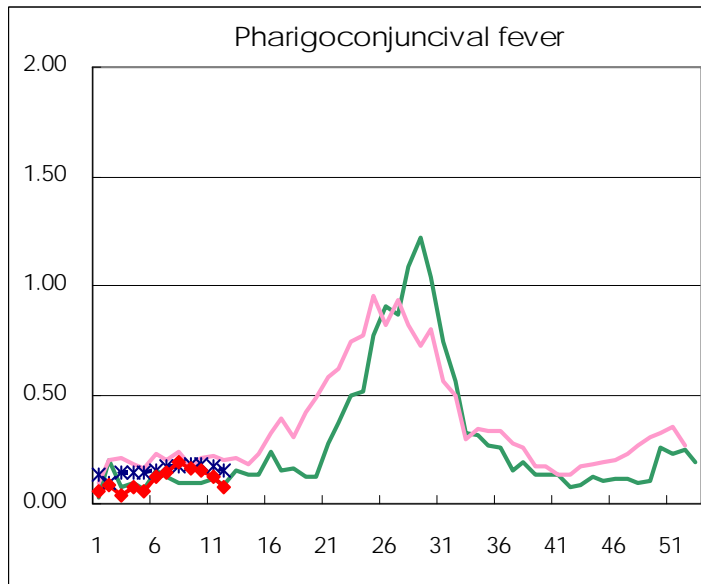
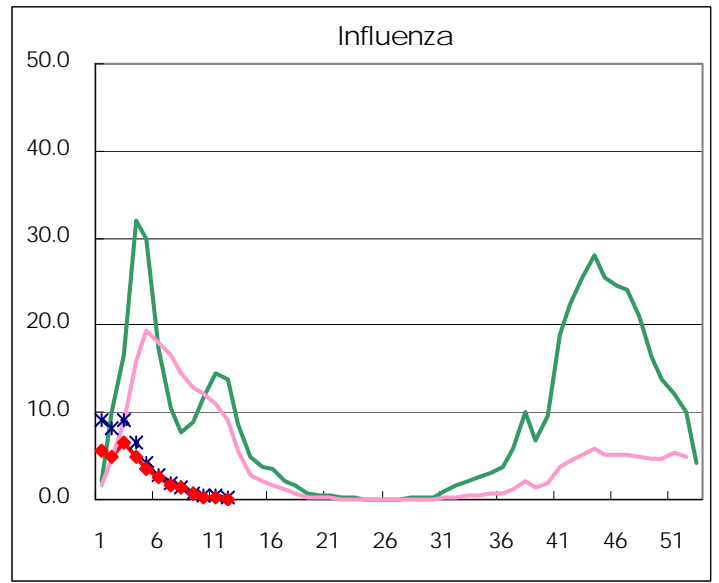
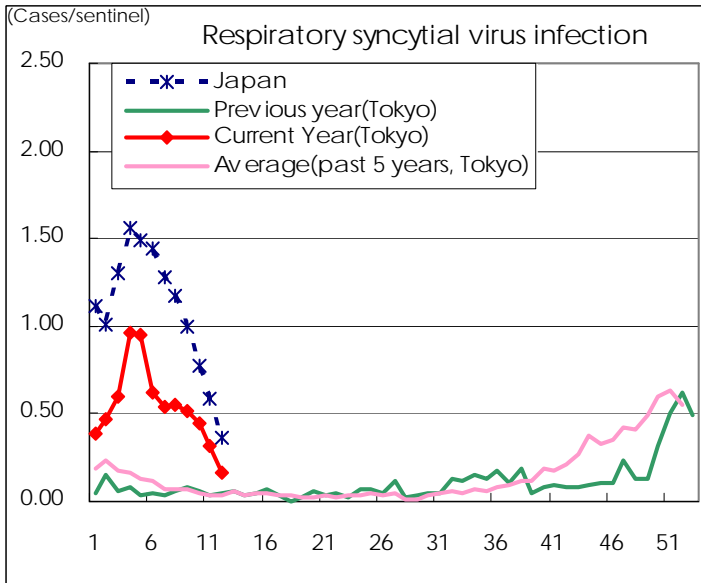
Category	Diseases	Tokyo				Japan		
		9th	10th	11th	12th	Cum 2010	12th	Cum 2010
V	Amebiasis	5	1	5	4	34	9	187
	Viral hepatitis(excluding hepatitis A and E)	3	3			11	1	39
	Acute encephalitis(excluding JE and WNE)		1	3		8	1	70
	Cryptosporidiosis					1		1
	Creutzfeldt-Jakob disease	1		1		3		32
	Severe invasive streptococcal infections(TSLS)	1				4	1	33
	Acquired immunodeficiency syndrome (AIDS)	9	6	16	11	101	14	287
	Giardiasis	1				3		16
	Meningococcal meningitis							3
	Congenital rubella syndrome							
	Syphilis	1	6	5	3	33	8	123
	Tetanus				1		1	14
	Vancomycin-resistant S. aureus infection							
	Vancomycin-resistant Enterococcus infection			1	1	4	1	19
	Rubella			1	1	2		16
Measles	3	1	1	1	11	4	97	
Novel Flu	Novel influenza (swine-origin influenza A/H1N1)	—	—	—	—	—	—	—

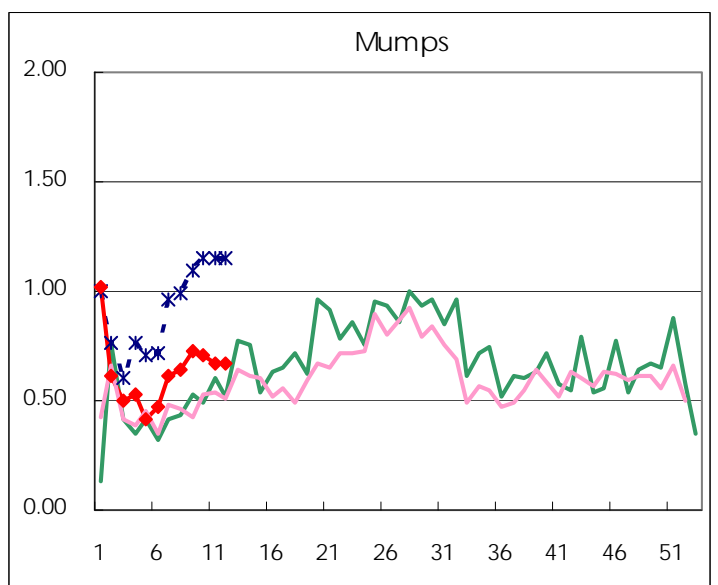
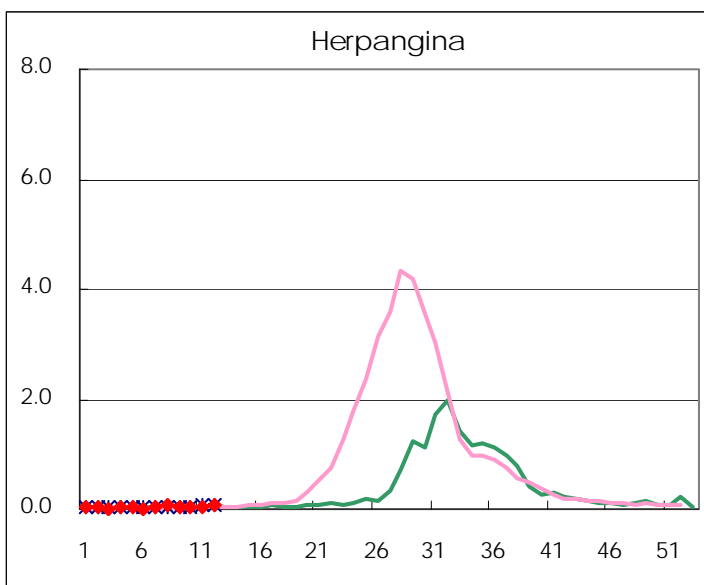
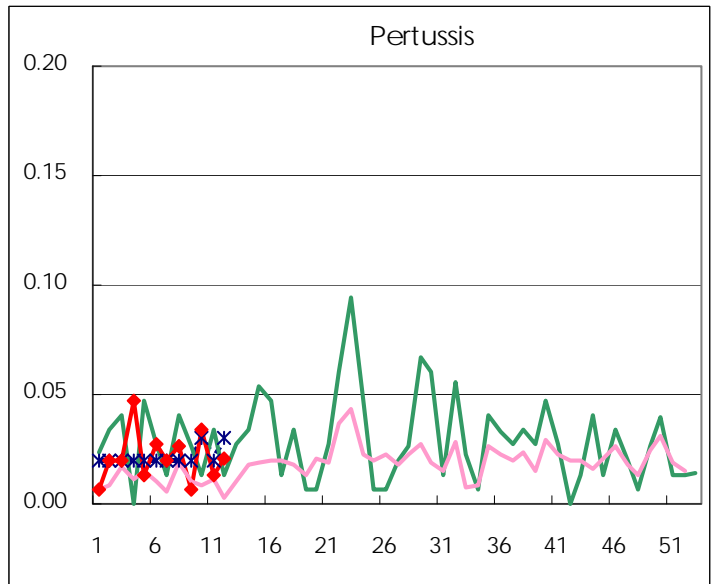
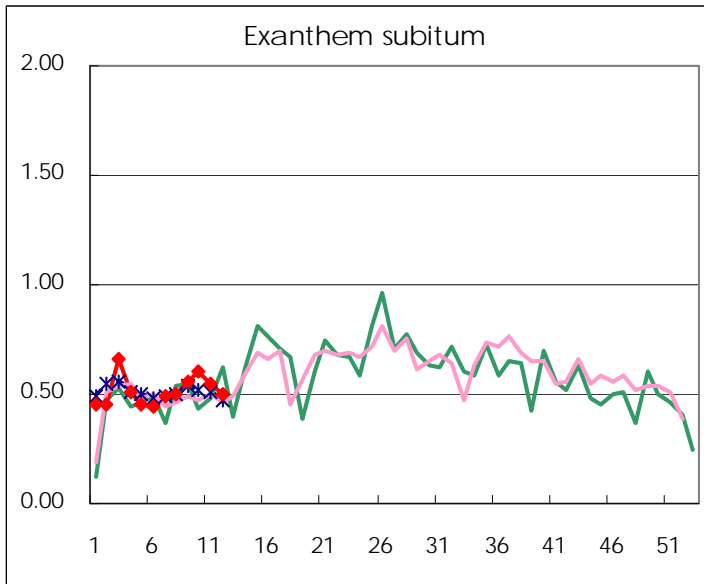
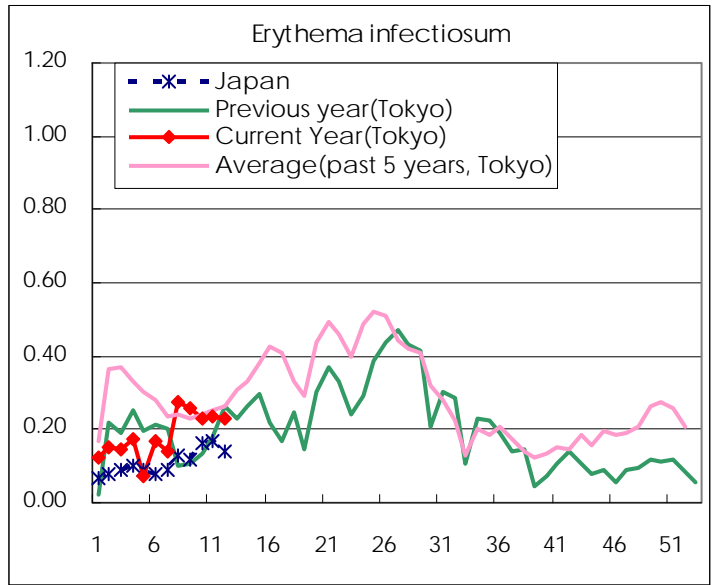
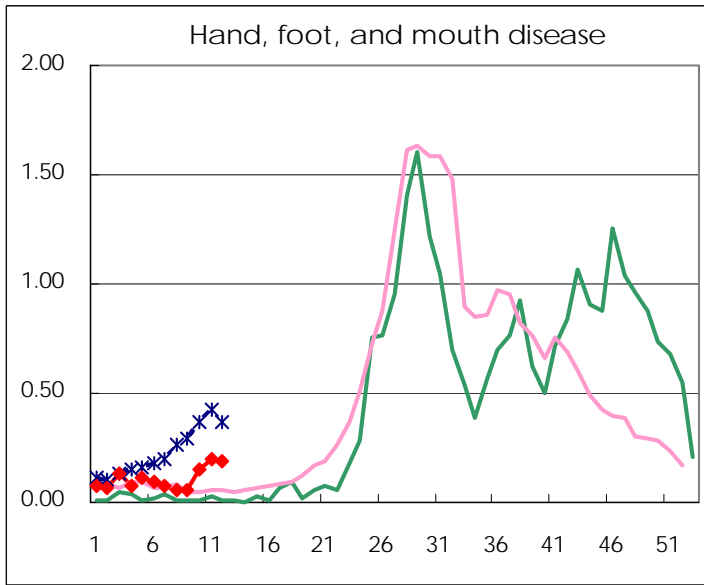
Number of patients with the diseases to be reported
by the designated clinics and hospitals

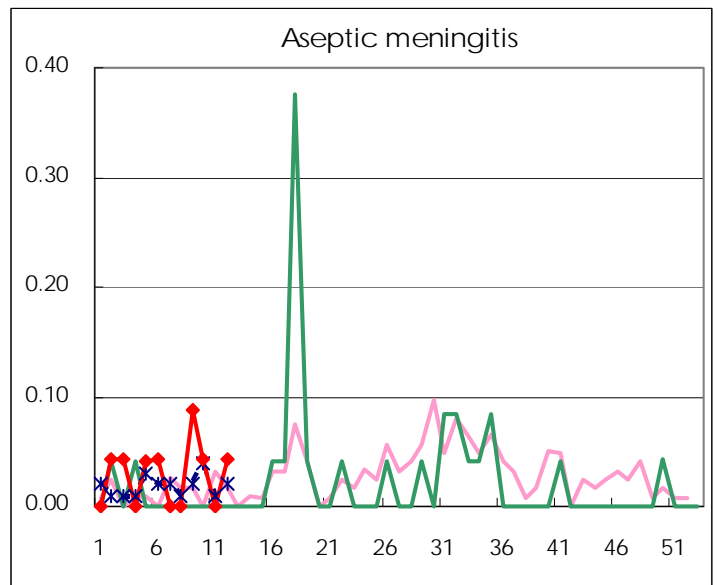
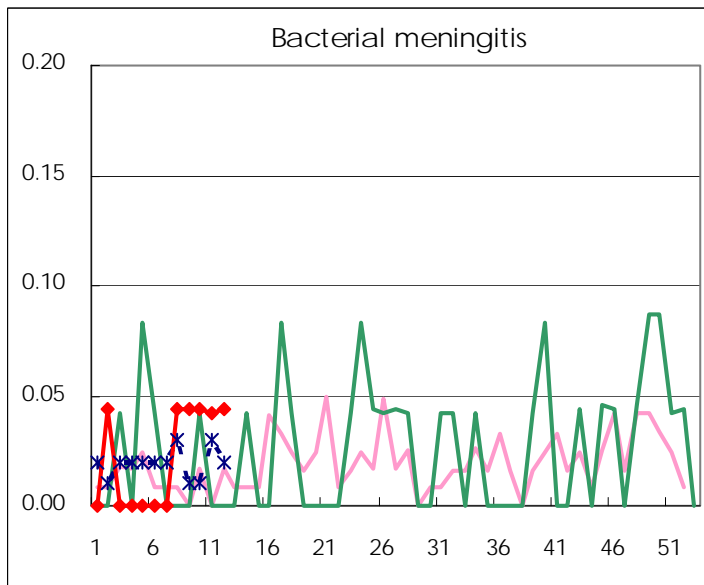
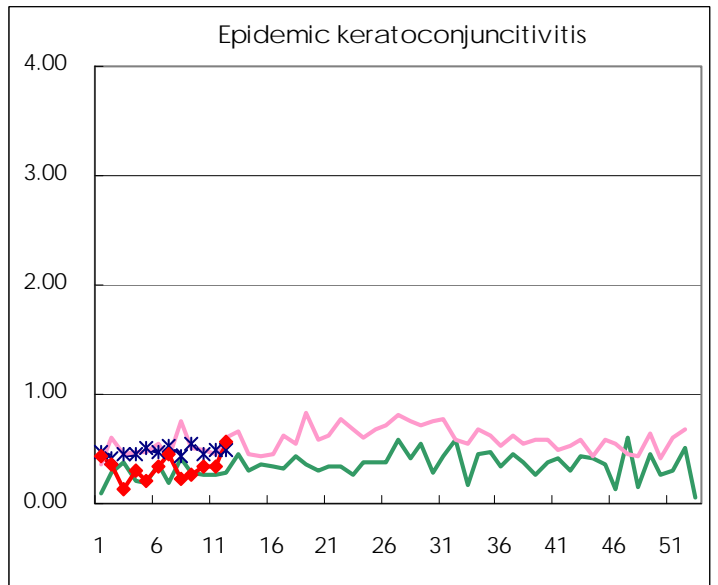
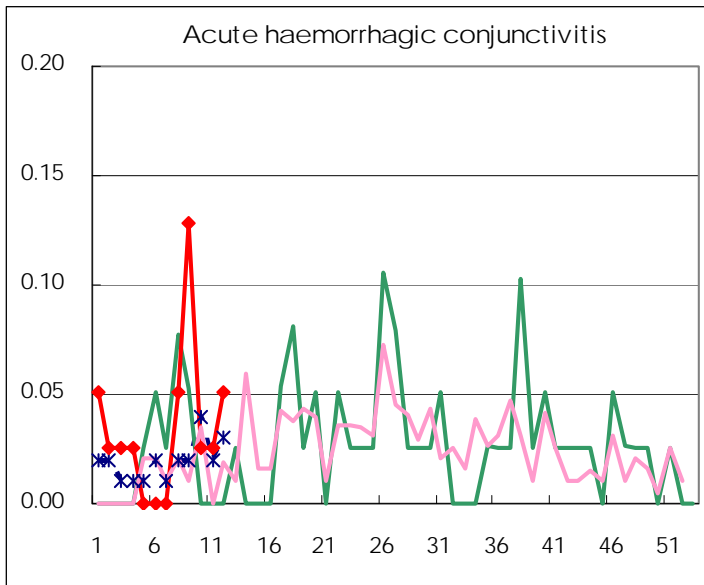
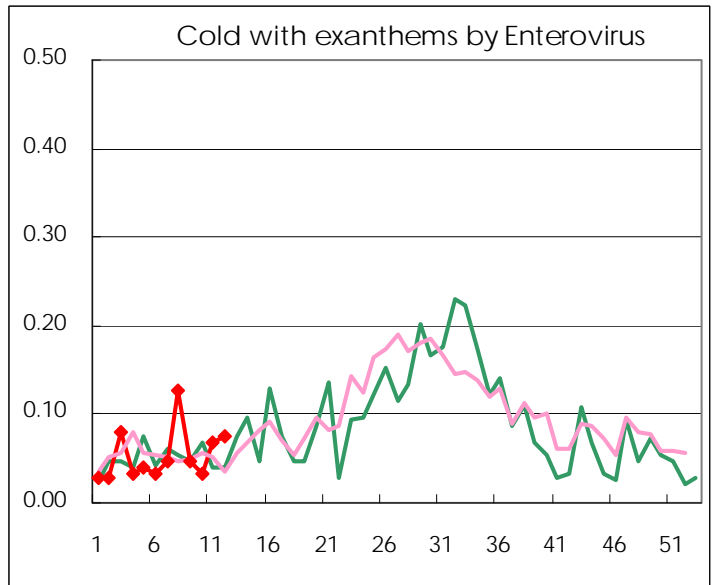
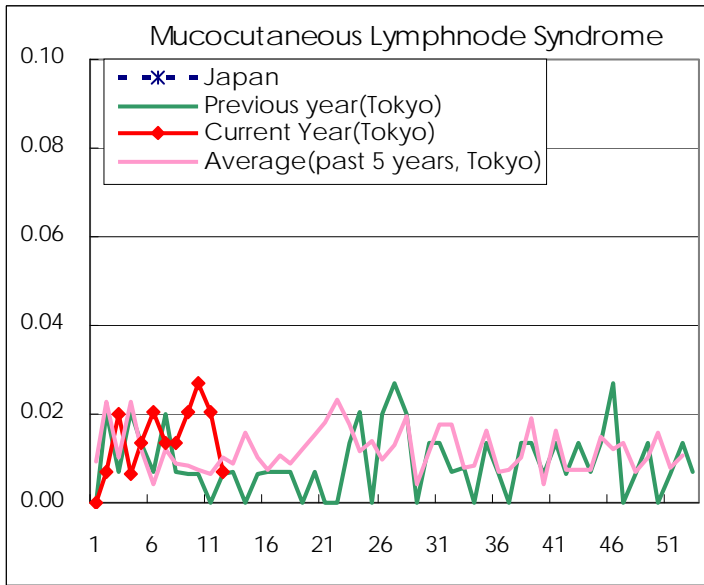
Diseases	2010				
	9th	10th	11th	12th	/sentinel
Respiratory syncytial virus infection	77	66	46	24	0.16
Pharyngoconjunctival fever	24	22	18	11	0.07
Group A streptococcal pharyngitis	286	247	246	209	1.42
Infectious gastroenteritis	1,627	1,690	1,595	1,150	7.82
Chickenpox	271	225	299	230	1.56
Hand, foot, and mouth disease	8	22	29	28	0.19
Erythema infectiosum	38	34	35	34	0.23
Exanthem subitum	82	90	80	74	0.50
Pertussis	1	5	2	3	0.02
Herpangina	7	8	6	10	0.07
Mumps	108	105	99	99	0.67
Cold with exanthems by Enterovirus	7	5	10	11	0.07
Mucocutaneous Lymphnode Syndrome	3	4	3	1	0.01
Influenza	179	95	89	27	0.09
Acute hemorrhagic conjunctivitis	5	1	1	2	0.05
Epidemic keratoconjunctivitis	10	13	13	22	0.56
Bacterial meningitis	1	1	1	1	0.04
Aseptic meningitis	2	1		1	0.04
Mycoplasma pneumonia	8	8	5	7	0.30
Chlamydial pneumonia (excluding psittacosis)					

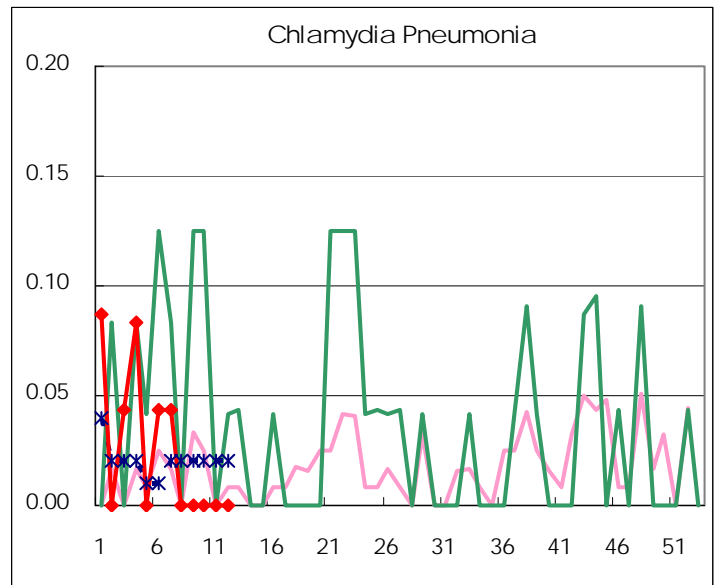
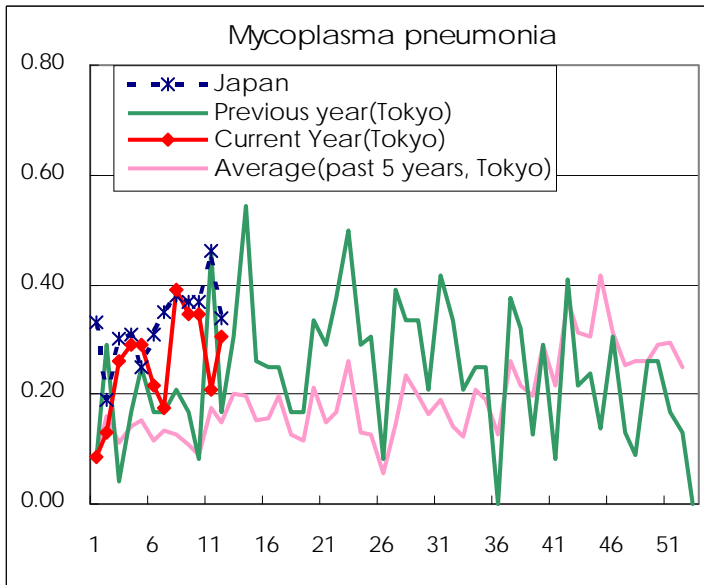
(Blank means 0.)

Disease Trend Graph (weekly reported cases per sentinel in comparison)









Number of sentinel facilities for weekly reporting		
Types of sentinels	Number of sentinels	Sentinels having reported
Pediatric	150	147
Influenza	290	286
Ophthalmic	39	39
Specially-designated	24	23

Tokyo Metropolitan Government
Infectious Disease Surveillance Center