
INFECTIOUS DISEASES WEEKLY REPORT

TOKYO IDWR

Tokyo Metropolitan Infectious Disease Surveillance Center

15 April 2010 / Number 14

Surveillance System in Tokyo, Japan

The infectious diseases which all physicians must report

All physicians must report to health centers the incidence of the diseases which are shown at page one. Health centers electronically report the individual cases to Tokyo Metropolitan Infectious Disease Surveillance Center.

The infectious diseases required to be reported by the sentinels

The numbers of patients who visit the sentinel clinics or hospitals during a week are reported to health centers in Tokyo. And they electronically report the numbers to Tokyo Metropolitan Infectious Disease Surveillance Center. We have about 400 sentinel clinics and hospitals in Tokyo.

1st Week is early January and 52nd Week is end of December.

Tokyo Metropolitan Institute of Public Health
Epidemiological Information Office

TEL:81-3-3363-3213 FAX:81-3-5332-7365

e-mail:idsc@tokyo-eiken.go.jp

URL:idsc.tokyo-eiken.go.jp/

Number of patients with the diseases which all physicians must report

Category	Diseases	Tokyo				Cum 2010	Japan	
		11th	12th	13th	14th		14th	Cum 2010
I	Ebola hemorrhagic fever							
	Crimean-Congo hemorrhagic fever							
	Smallpox							
	South American hemorrhagic fever							
	Plague							
	Marburg disease							
	Lassa fever							
II	Acute poliomyelitis							1
	Tuberculosis	67	59	70	36	1039	245	5849
	Diphtheria							
	Severe Acute Respiratory Syndrome(SARS)							
	Avian influenza H5N1							
III	Cholera					1		2
	Shigellosis	1	2	2	2	21	3	46
	Enterohemorrhagic Escherichia coli infection	1	2	1	6	37	21	279
	Typhoid fever						1	6
	Paratyphoid fever		1			2	1	6
IV	Hepatitis E	1				5	1	19
	West Nile fever							
	Hepatitis A	4		2	2	17	16	111
	Echinococcosis							1
	Yellow fever							
	Psittacosis							2
	Omsk hemorrhagic fever							
	Relapsing fever							
	Kyasanur forest disease							
	Q fever							
	Rabies							
	Coccidioidomycosis							
	Monkeypox							
	Hemorrhagic fever with renal syndrome							
	Western equine encephalitis							
	Tick-borne encephalitis							
	Anthrax							
	Scrub typhus(Tsutsugamushi disease)					3		31
	Dengue fever	2	2		1	9	1	30
	Eastern equine encephalitis							
	Avian influenza (excluding H5N1)							
	Nipah virus infection							
	Japanese spotted fever					1	1	7
	Japanese encephalitis							
	Epidemic typhus							
	Hantavirus pulmonary syndrome							
	Herpes B virus infection							
	Glanders							
	Brucellosis						1	1
	Venezuelan equine encephalitis							
	Hendra virus infection							
Botulism								
Malaria				1	6	1	17	
Tularemia								
Lyme disease					1		3	
Lyssavirus infection(excluding rabies)								
Rift valley fever								
Melioidosis					1		2	
Legionellosis			1		8	6	138	
Leptospirosis	1				1		1	
Rocky mountain spotted fever								

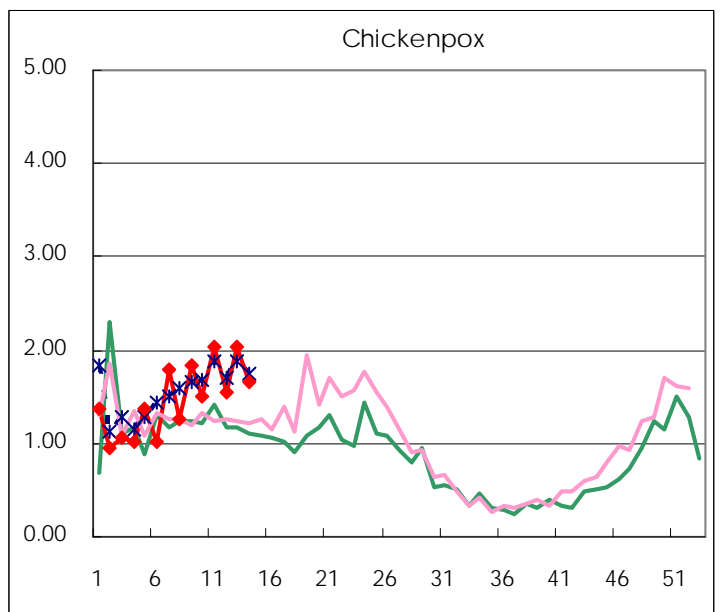
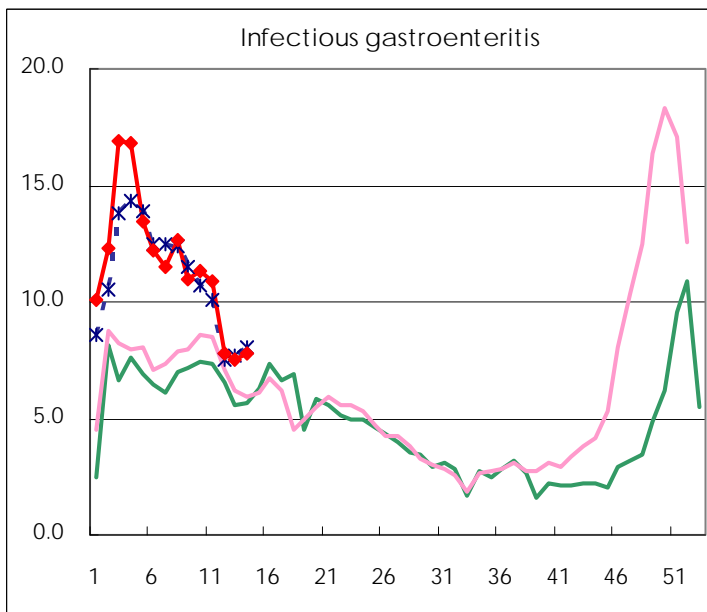
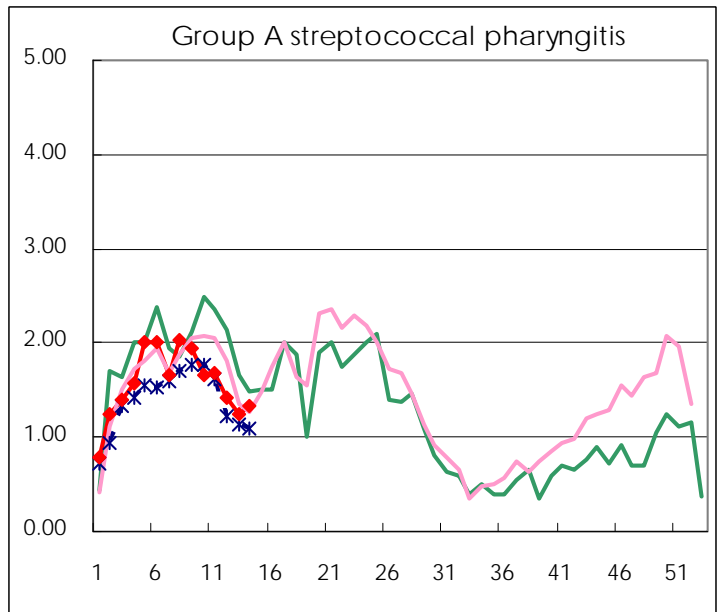
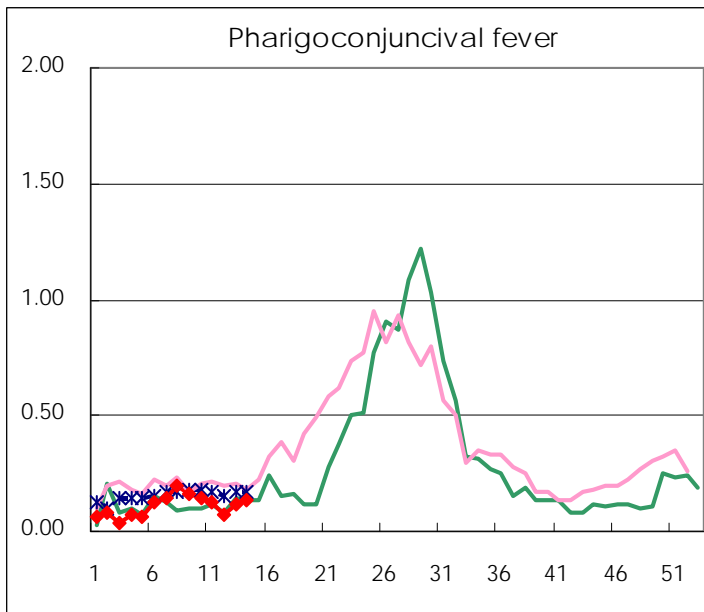
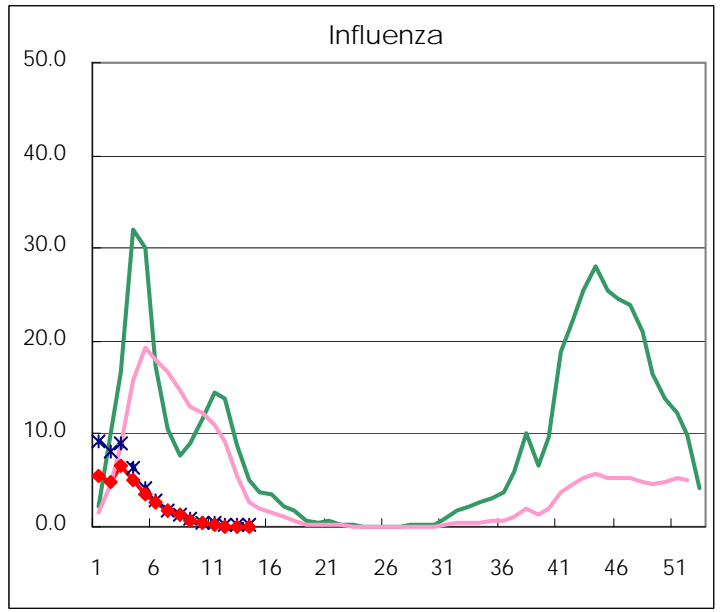
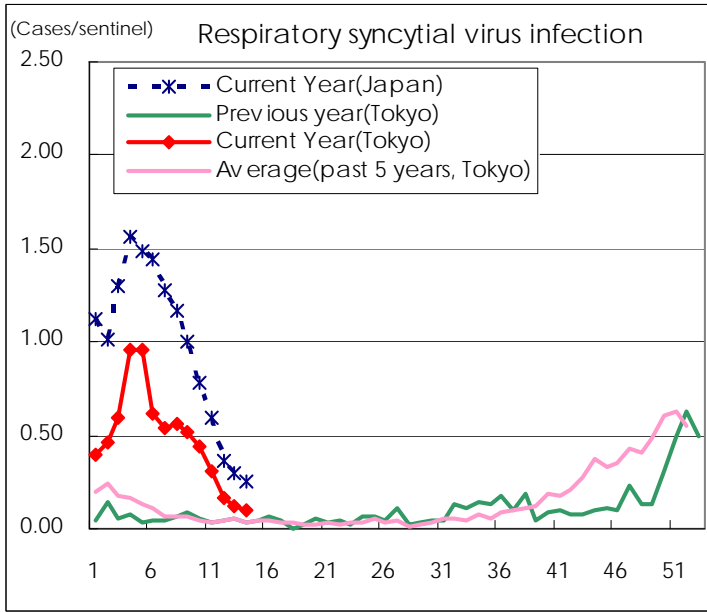
Category	Diseases	Tokyo				Japan		
		11th	12th	13th	14th	Cum 2010	14th	Cum 2010
V	Amebiasis	5	4	3	2	43	6	214
	Viral hepatitis(excluding hepatitis A and E)			3	1	15	1	48
	Acute encephalitis(excluding JE and WNE)	3				8	2	77
	Cryptosporidiosis					1		1
	Creutzfeldt-Jakob disease	1		1		4	2	37
	Severe invasive streptococcal infections(TSLS)					4	1	37
	Acquired immunodeficiency syndrome (AIDS)	16	12	10	10	134	12	340
	Giardiasis			2		5	1	19
	Meningococcal meningitis							3
	Congenital rubella syndrome							
	Syphilis	5	4	3	2	42	7	139
	Tetanus		1			1	2	20
	Vancomycin-resistant S. aureus infection							
	Vancomycin-resistant Enterococcus infection	1	1			5		21
	Rubella	1	1	1	1	5	1	21
Measles	1	1	3		15	10	123	
Novel Flu	Novel influenza (swine-origin influenza A/H1N1)	—	—	—	—		—	

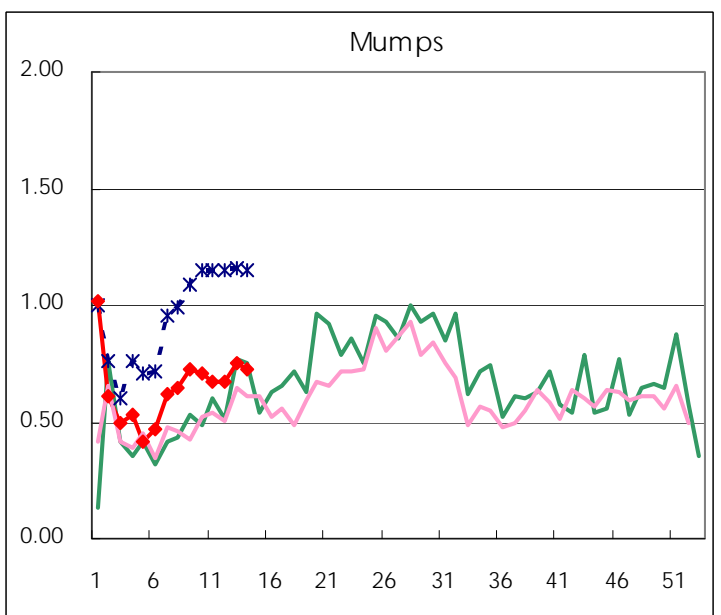
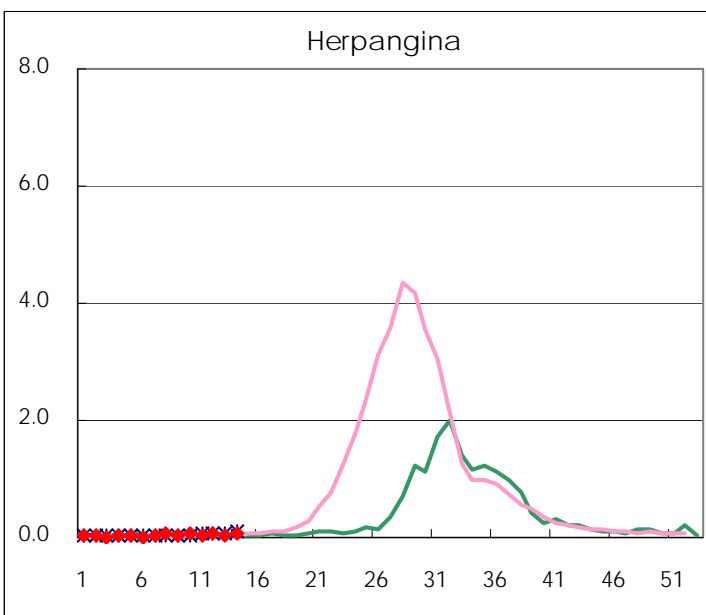
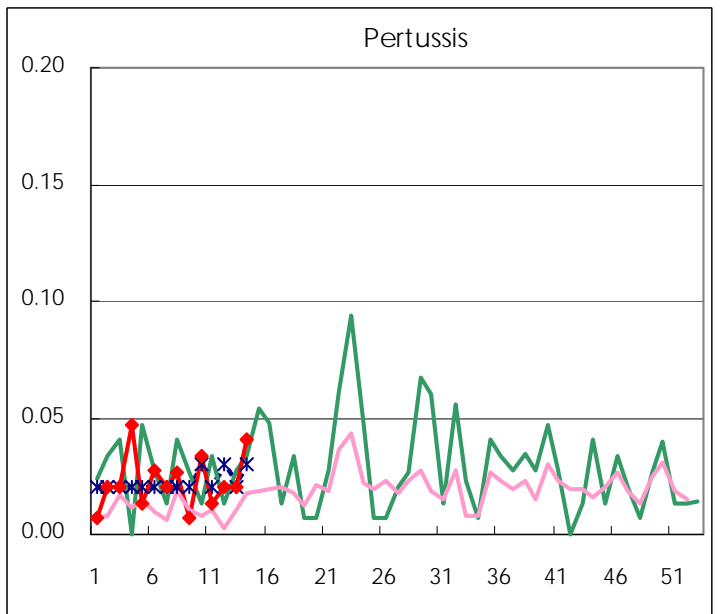
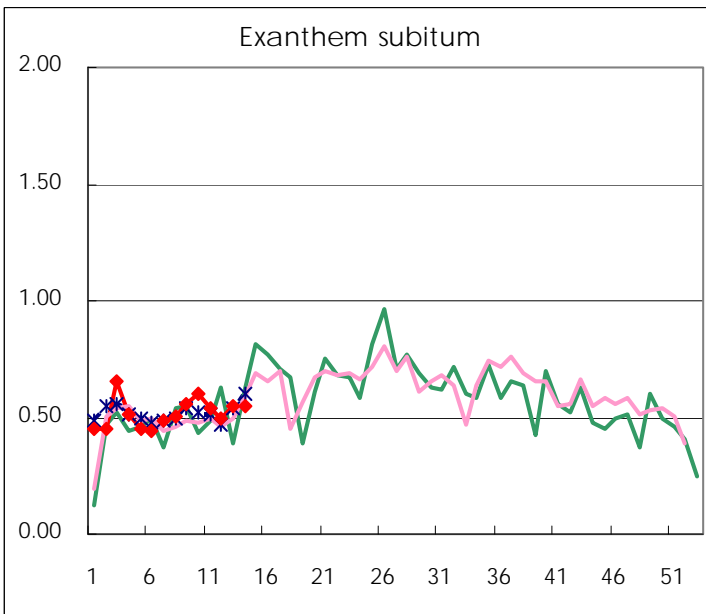
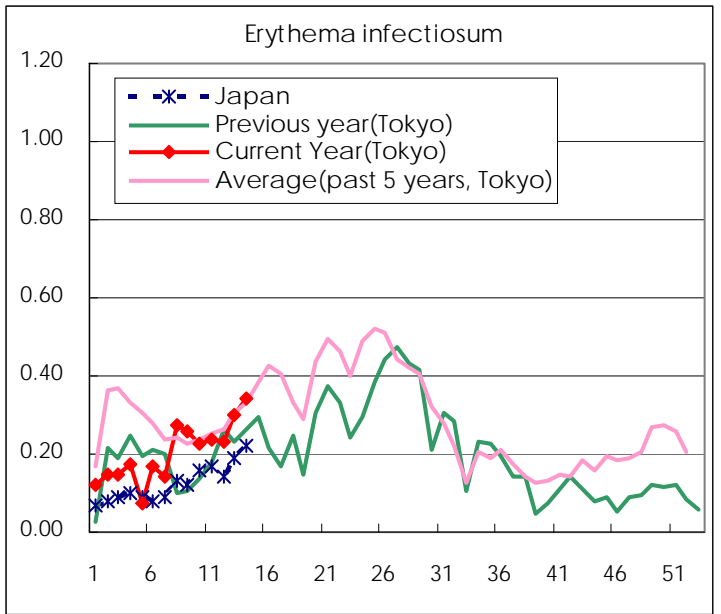
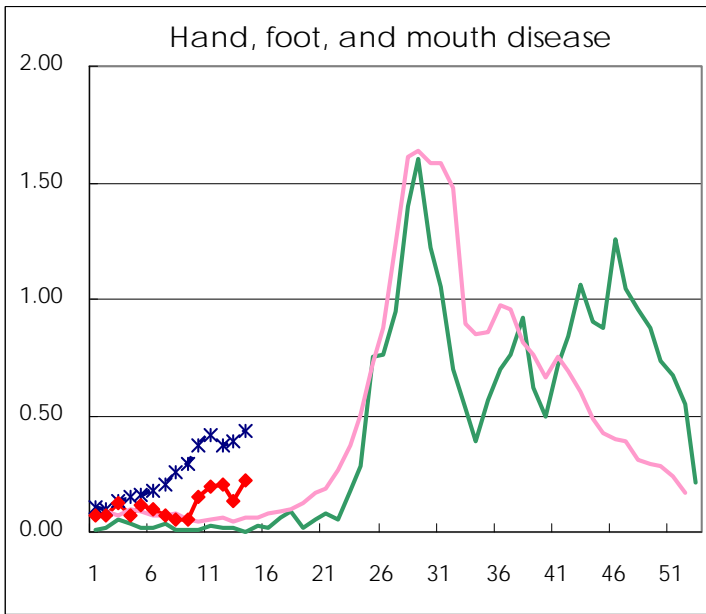
Number of patients with the diseases to be reported
by the designated clinics and hospitals

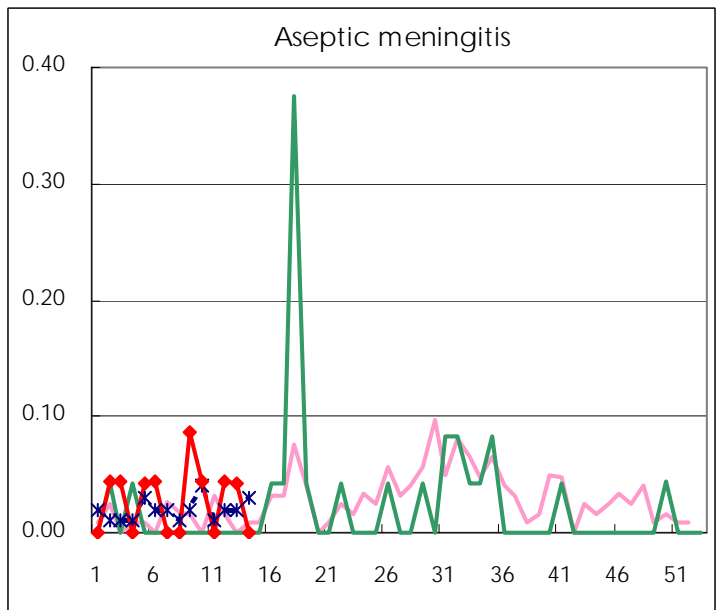
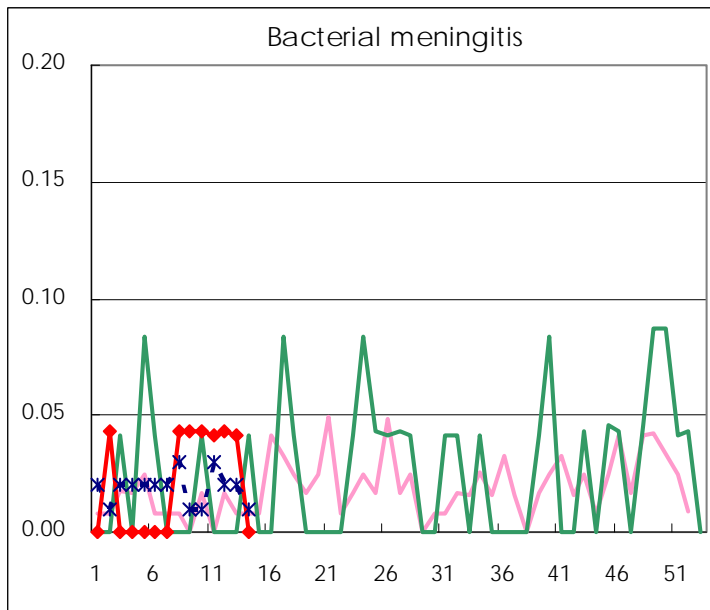
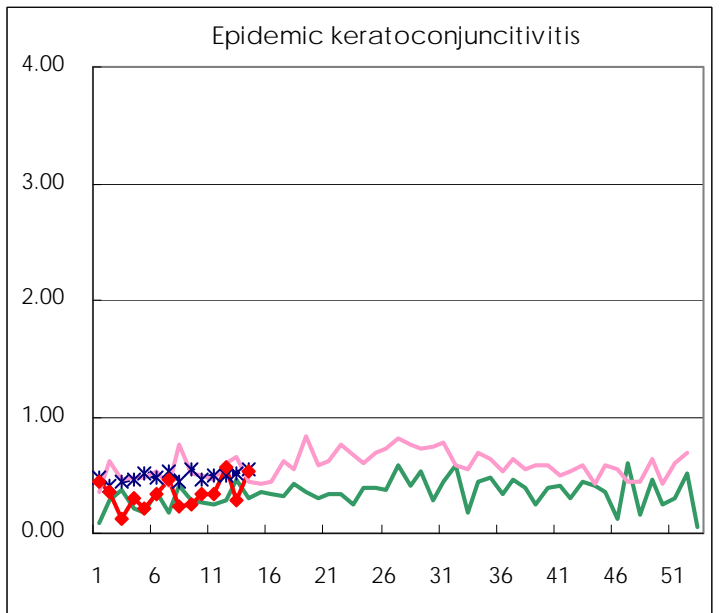
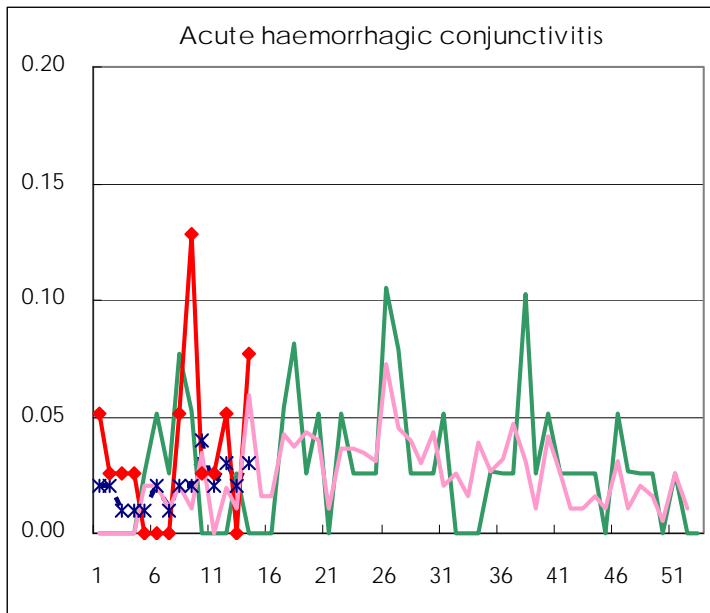
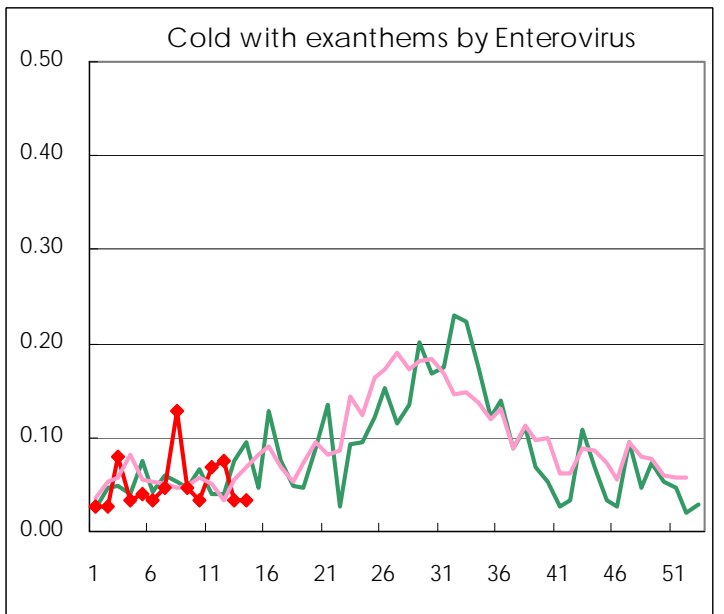
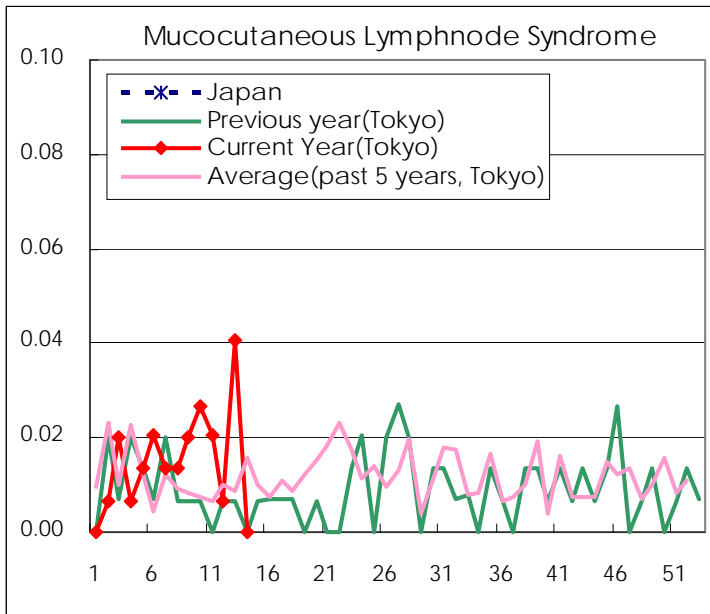
Diseases	2010				
	11th	12th	13th	14th	/sentinel
Respiratory syncytial virus infection	46	24	17	14	0.10
Pharyngoconjunctival fever	18	11	17	20	0.14
Group A streptococcal pharyngitis	246	211	184	195	1.33
Infectious gastroenteritis	1,595	1,152	1,101	1,143	7.78
Chickenpox	299	230	298	243	1.65
Hand, foot, and mouth disease	29	30	19	32	0.22
Erythema infectiosum	35	34	44	50	0.34
Exanthem subitum	80	74	81	81	0.55
Pertussis	2	3	3	6	0.04
Herpangina	6	10	7	11	0.07
Mumps	99	99	110	107	0.73
Cold with exanthems by Enterovirus	10	11	5	5	0.03
Mucocutaneous Lymphnode Syndrome	3	1	6		
Influenza	89	27	20	23	0.08
Acute hemorrhagic conjunctivitis	1	2		3	0.08
Epidemic keratoconjunctivitis	13	22	11	21	0.54
Bacterial meningitis	1	1	1		
Aseptic meningitis		1	1		
Mycoplasma pneumonia	5	7	5	2	0.08
Chlamydial pneumonia (excluding psittacosis)				1	0.04

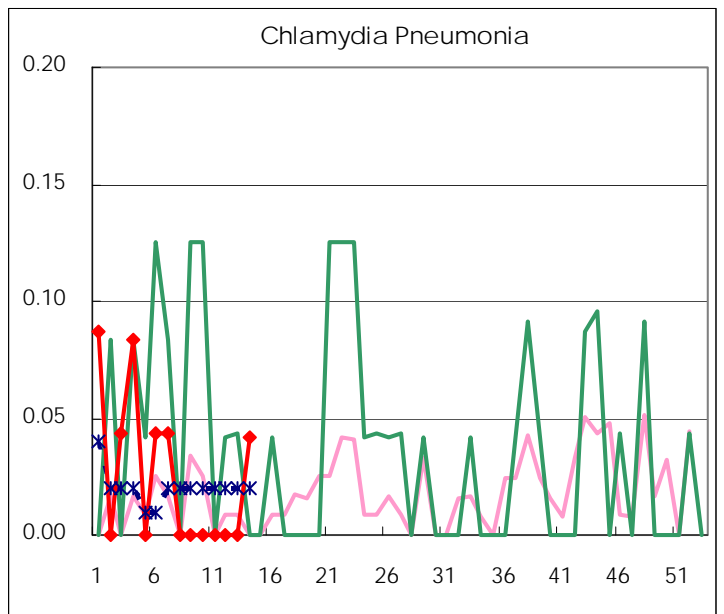
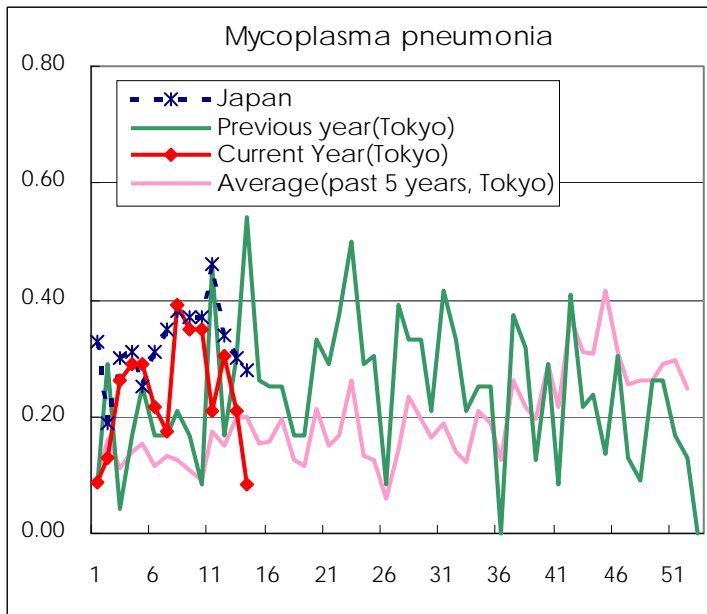
(Blank means 0.)

Disease Trend Graph (weekly reported cases per sentinel in comparison)









Number of sentinel facilities
for weekly reporting

Types of sentinels	Number of sentinels	Sentinels having reported
Pediatric	150	147
Influenza	290	286
Ophthalmic	39	39
Specially-designated	24	24

Tokyo Metropolitan Government
Infectious Disease Surveillance Center