
INFECTIOUS DISEASES WEEKLY REPORT

TOKYO IDWR

Tokyo Metropolitan Infectious Disease Surveillance Center

30 April 2010 / Number 16

Surveillance System in Tokyo, Japan

The infectious diseases which all physicians must report

All physicians must report to health centers the incidence of the diseases which are shown at page one. Health centers electronically report the individual cases to Tokyo Metropolitan Infectious Disease Surveillance Center.

The infectious diseases required to be reported by the sentinels

The numbers of patients who visit the sentinel clinics or hospitals during a week are reported to health centers in Tokyo. And they electronically report the numbers to Tokyo Metropolitan Infectious Disease Surveillance Center. We have about 400 sentinel clinics and hospitals in Tokyo.

1st Week is early January and 52nd Week is end of December.

Tokyo Metropolitan Institute of Public Health
Epidemiological Information Office

TEL:81-3-3363-3213 FAX:81-3-5332-7365

e-mail: idsc@tokyo-eiken.go.jp

URL: idsc.tokyo-eiken.go.jp/

Number of patients with the diseases which all physicians must report

Category	Diseases	Tokyo				Japan		
		13th	14th	15th	16th	Cum 2010	16th	Cum 2010
I	Ebola hemorrhagic fever							
	Crimean-Congo hemorrhagic fever							
	Smallpox							
	South American hemorrhagic fever							
	Plague							
	Marburg disease							
	Lassa fever							
II	Acute poliomyelitis							1
	Tuberculosis	75	48	61	45	1162	270	6846
	Diphtheria							
	Severe Acute Respiratory Syndrome(SARS)							
	Avian influenza H5N1							
III	Cholera					1		2
	Shigellosis	2	2	1	2	24	2	49
	Enterohemorrhagic Escherichia coli infection	1	5	2	3	41	13	337
	Typhoid fever				1	1	1	8
	Paratyphoid fever					2		9
IV	Hepatitis E					5		22
	West Nile fever							
	Hepatitis A	2	2		2	19	15	144
	Echinococcosis							1
	Yellow fever							
	Psittacosis							2
	Omsk hemorrhagic fever							
	Relapsing fever							
	Kyasanur forest disease							
	Q fever							
	Rabies							
	Coccidioidomycosis							
	Monkeypox							
	Hemorrhagic fever with renal syndrome							
	Western equine encephalitis							
	Tick-borne encephalitis							
	Anthrax							
	Scrub typhus(Tsutsugamushi disease)					3	1	33
	Dengue fever		1		2	11	3	42
	Eastern equine encephalitis							
	Avian influenza (excluding H5N1)							
	Nipah virus infection							
	Japanese spotted fever					1		8
	Japanese encephalitis							
	Epidemic typhus							
	Hantavirus pulmonary syndrome							
	Herpes B virus infection							
	Glanders							
	Brucellosis							1
	Venezuelan equine encephalitis							
	Hendra virus infection							
Botulism								
Malaria		1	2		8		20	
Tularemia								
Lyme disease					1		3	
Lyssavirus infection(excluding rabies)								
Rift valley fever								
Melioidosis					1		2	
Legionellosis	1		1	1	10	2	149	
Leptospirosis					1		1	
Rocky mountain spotted fever								

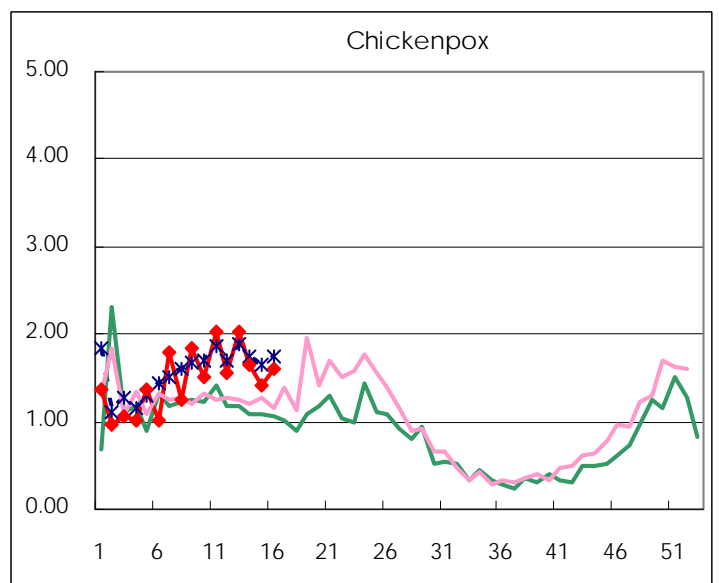
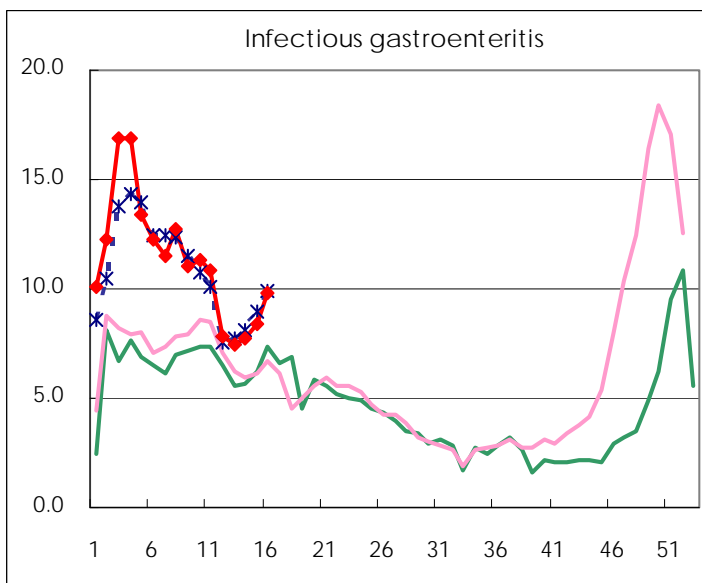
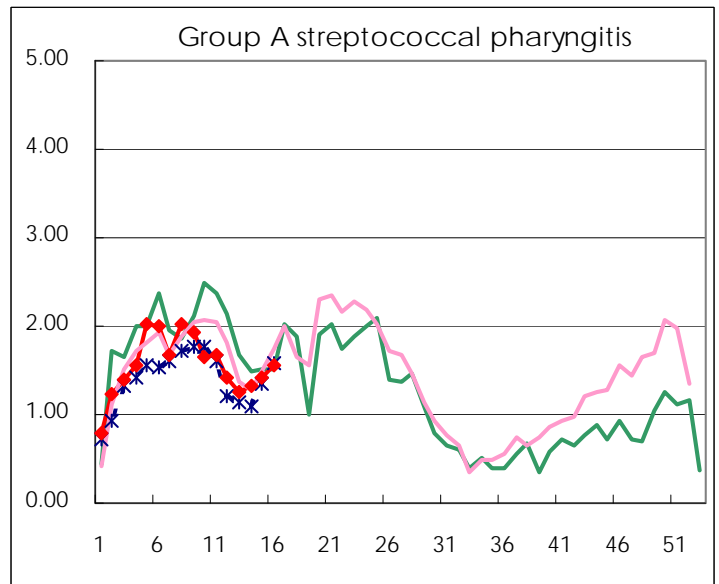
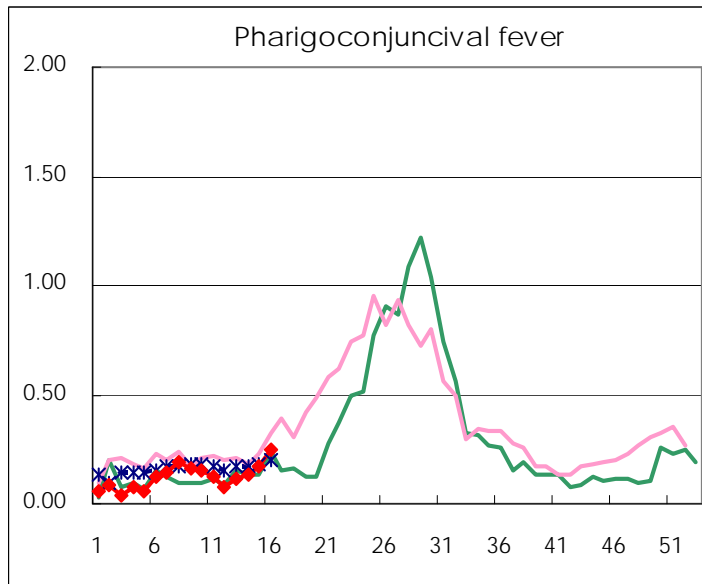
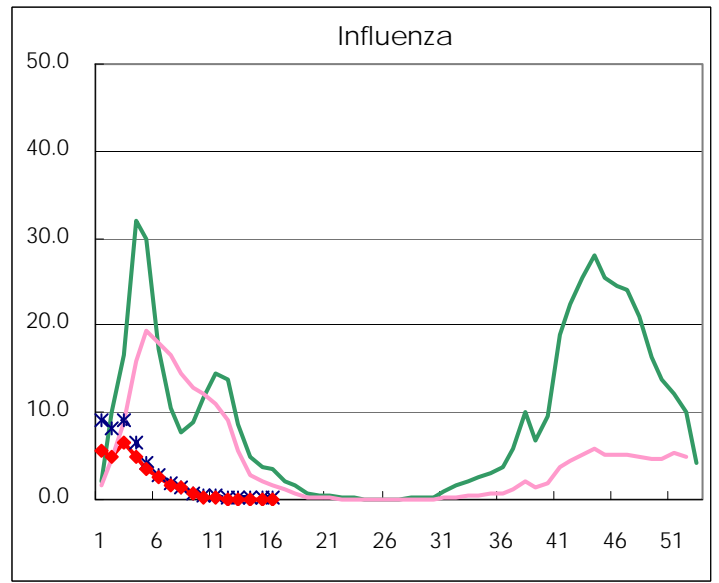
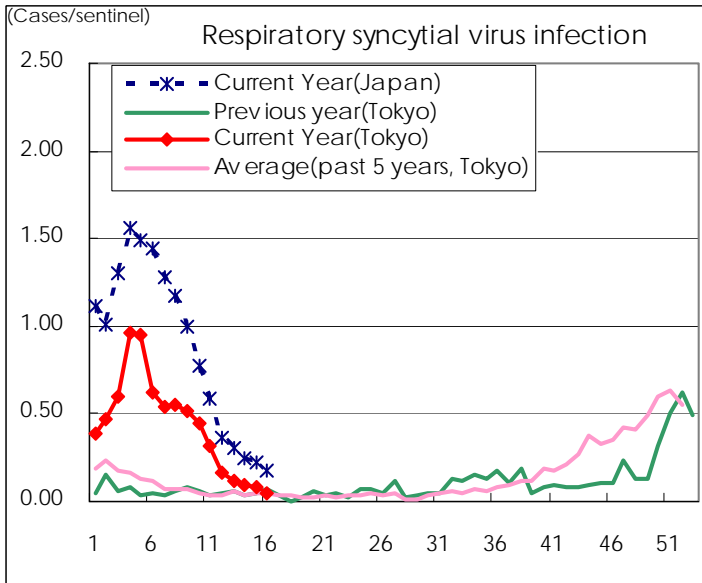
Category	Diseases	Tokyo					Japan	
		13th	14th	15th	16th	Cum 2010	16th	Cum 2010
V	Amebiasis	3	2	4	3	50	7	239
	Viral hepatitis(excluding hepatitis A and E)	3	1			15		54
	Acute encephalitis(excluding JE and WNE)					8	2	84
	Cryptosporidiosis					1		3
	Creutzfeldt-Jakob disease	1				4	3	46
	Severe invasive streptococcal infections(TSLS)				1	5	4	43
	Acquired immunodeficiency syndrome (AIDS)	10	10	9	5	148	12	397
	Giardiasis	2				5	1	23
	Meningococcal meningitis							3
	Congenital rubella syndrome							
	Syphilis	3	2	4	3	49	5	161
	Tetanus					1	1	21
	Vancomycin-resistant S. aureus infection							
	Vancomycin-resistant Enterococcus infection				1	6	1	25
	Rubella	1	1		1	6	6	31
Measles	3		4	2	21	12	155	
Novel Flu	Novel influenza (swine-origin influenza A/H1N1)	—	—	—	—		—	

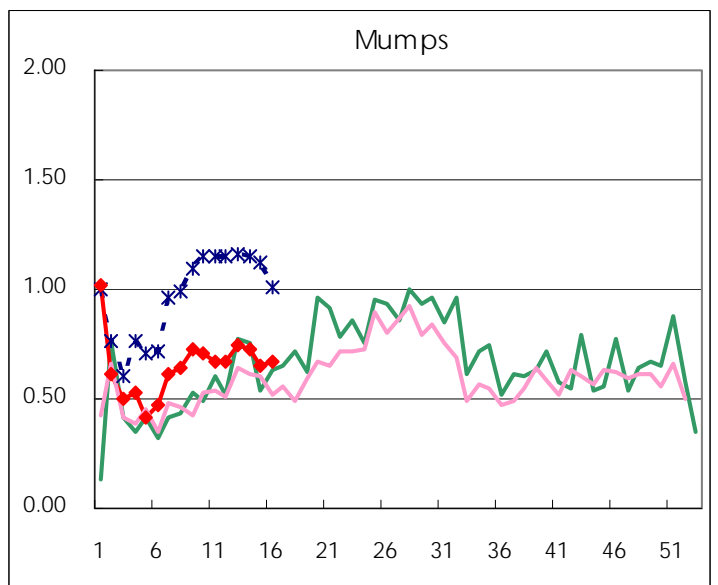
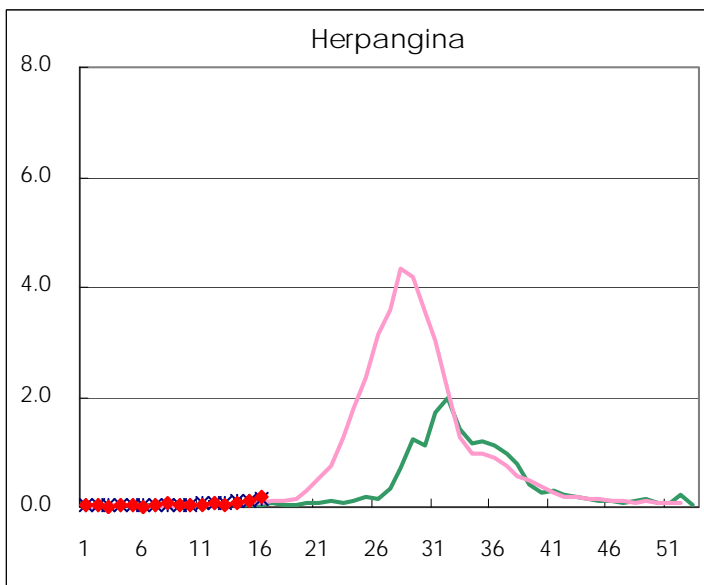
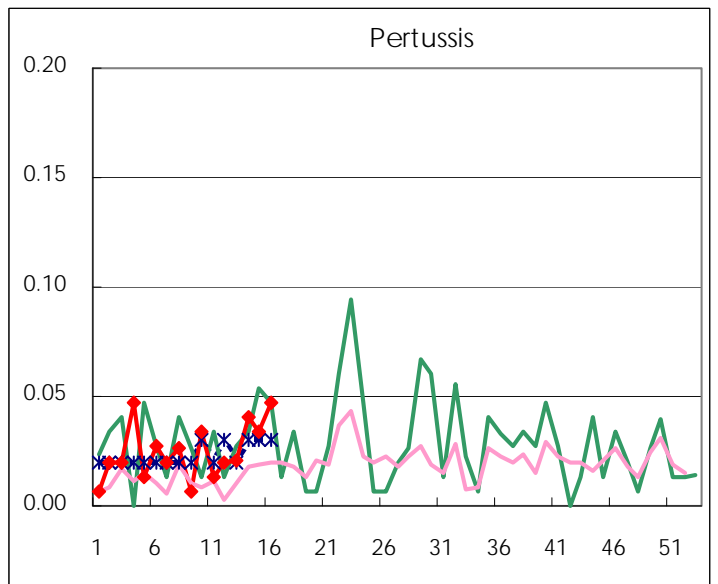
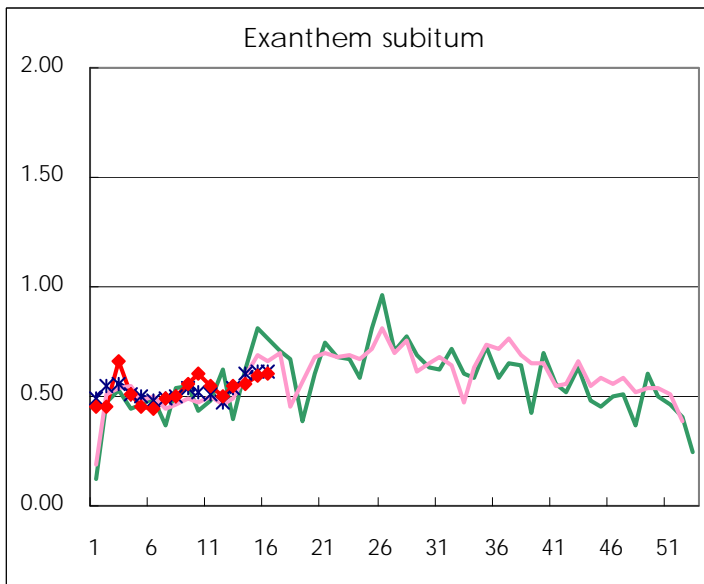
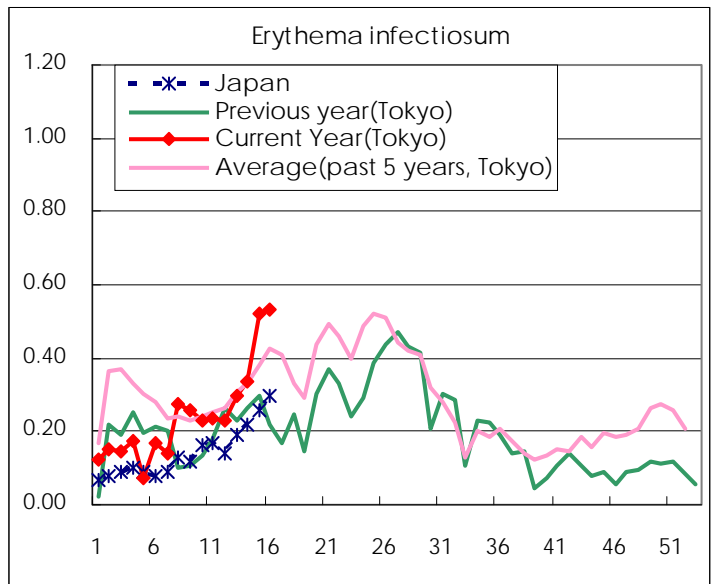
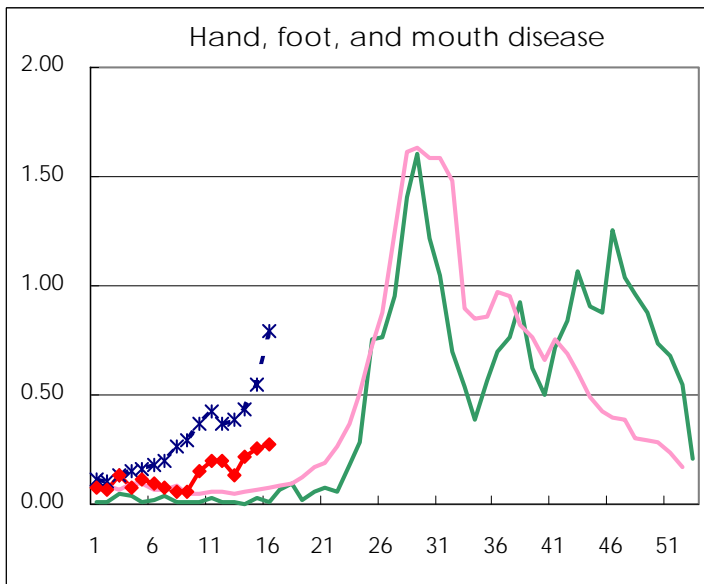
Number of patients with the diseases to be reported
by the designated clinics and hospitals

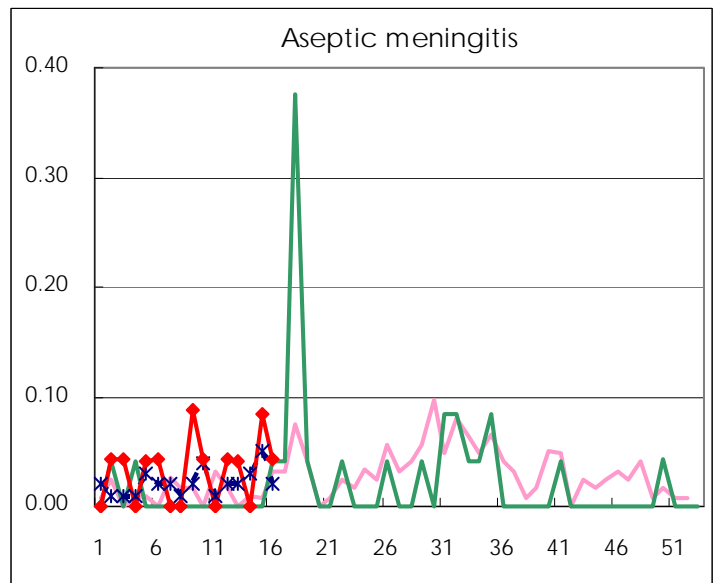
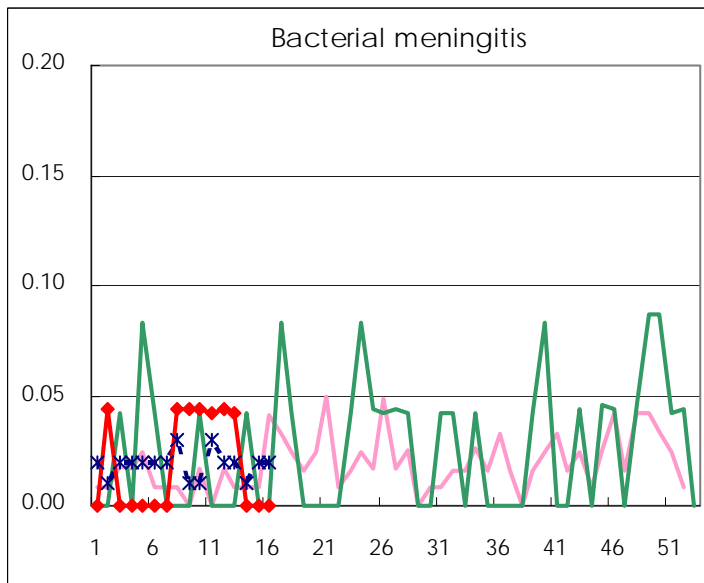
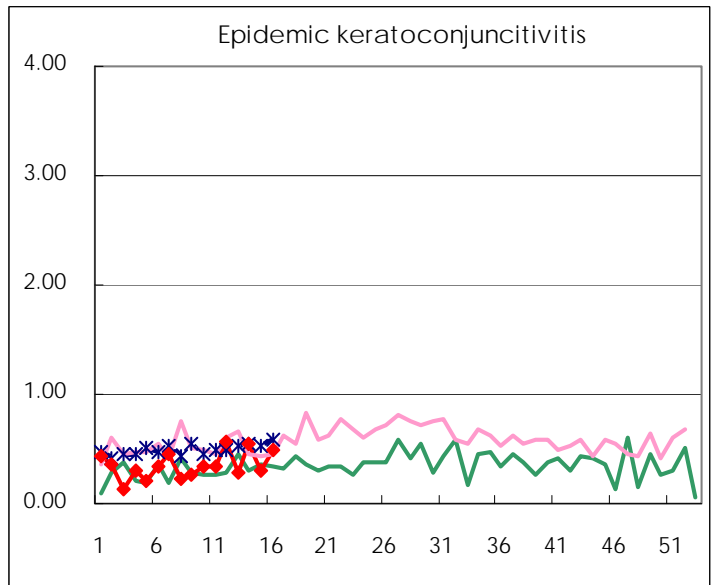
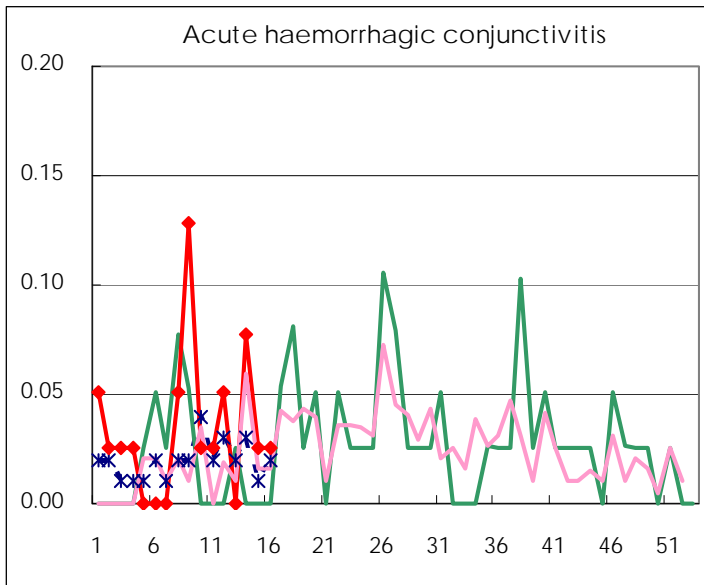
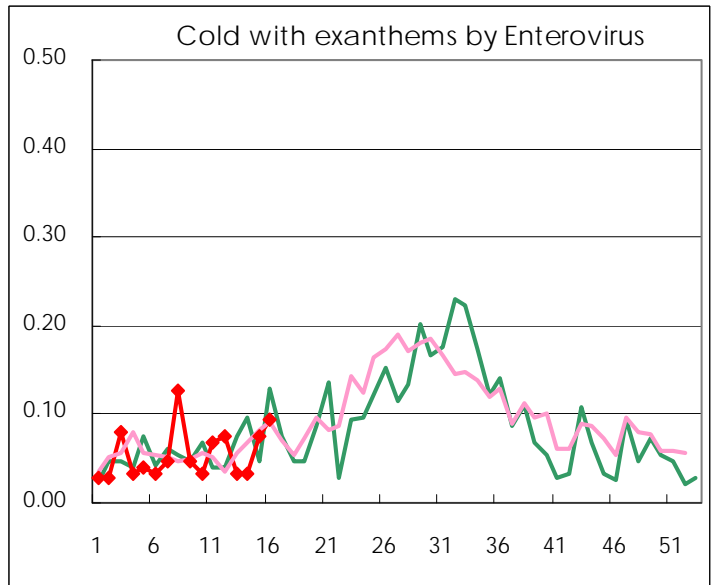
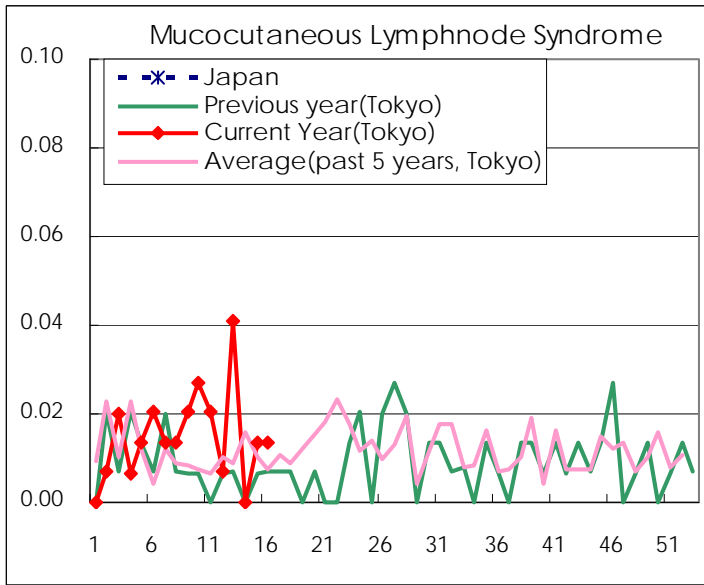
Diseases	2010				
	13th	14th	15th	16th	/sentinel
Respiratory syncytial virus infection	17	14	13	7	0.05
Pharyngoconjunctival fever	17	20	26	36	0.24
Group A streptococcal pharyngitis	184	195	209	232	1.57
Infectious gastroenteritis	1,101	1,144	1,240	1,456	9.84
Chickenpox	298	243	208	236	1.59
Hand, foot, and mouth disease	19	32	38	41	0.28
Erythema infectiosum	44	50	77	79	0.53
Exanthem subitum	81	82	88	89	0.60
Pertussis	3	6	5	7	0.05
Herpangina	7	11	16	27	0.18
Mumps	110	107	97	99	0.67
Cold with exanthems by Enterovirus	5	5	11	14	0.09
Mucocutaneous Lymphnode Syndrome	6		2	2	0.01
Influenza	20	23	13	26	0.09
Acute hemorrhagic conjunctivitis		3	1	1	0.03
Epidemic keratoconjunctivitis	11	21	12	19	0.49
Bacterial meningitis	1				
Aseptic meningitis	1		2	1	0.04
Mycoplasma pneumonia	5	2	2	9	0.39
Chlamydial pneumonia (excluding psittacosis)		1			

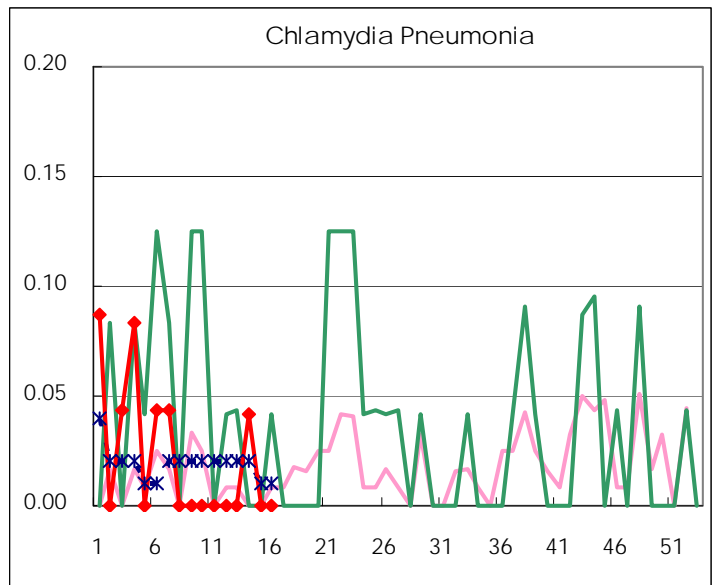
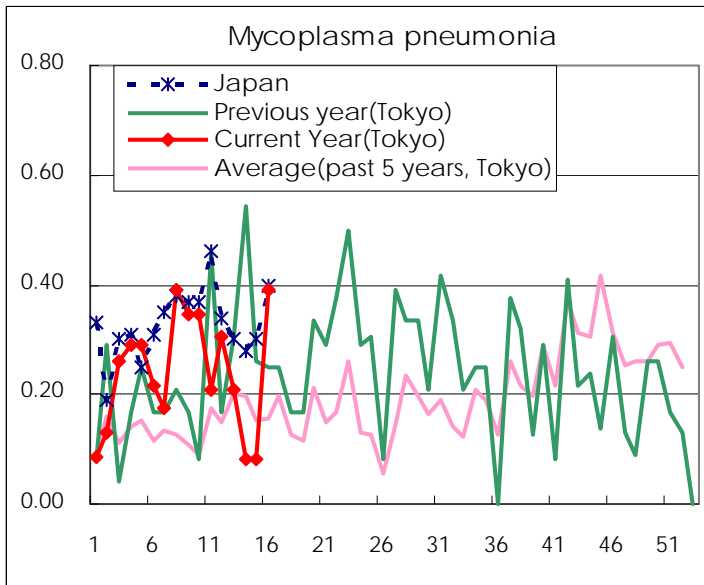
(Blank means 0.)

Disease Trend Graph (weekly reported cases per sentinel in comparison)









Number of sentinel facilities for weekly reporting		
Types of sentinels	Number of sentinels	Sentinels having reported
Pediatric	150	148
Influenza	290	287
Ophthalmic	39	39
Specially-designated	24	23

Tokyo Metropolitan Government
Infectious Disease Surveillance Center