

---

INFECTIOUS DISEASES WEEKLY REPORT

# TOKYO IDWR

Tokyo Metropolitan Infectious Disease Surveillance Center

## 3 June 2010 / Number 21

### Surveillance System in Tokyo, Japan

#### The infectious diseases which all physicians must report

All physicians must report to health centers the incidence of the diseases which are shown at page one. Health centers electronically report the individual cases to Tokyo Metropolitan Infectious Disease Surveillance Center.

#### The infectious diseases required to be reported by the sentinels

The numbers of patients who visit the sentinel clinics or hospitals during a week are reported to health centers in Tokyo. And they electronically report the numbers to Tokyo Metropolitan Infectious Disease Surveillance Center. We have about 400 sentinel clinics and hospitals in Tokyo.

1st Week is early January and 52nd Week is end of December.

Tokyo Metropolitan Institute of Public Health  
Epidemiological Information Office

TEL:81-3-3363-3213 FAX:81-3-5332-7365  
e-mail:[idsc@tokyo-eiken.go.jp](mailto:idsc@tokyo-eiken.go.jp)  
URL:[idsc.tokyo-eiken.go.jp/](http://idsc.tokyo-eiken.go.jp/)

---

### Number of patients with the diseases which all physicians must report

Category	Diseases	Tokyo				Japan		
		18th	19th	20th	21st	Cum 2010	21st	Cum 2010
I	Ebola hemorrhagic fever							
	Crimean-Congo hemorrhagic fever							
	Smallpox							
	South American hemorrhagic fever							
	Plague							
	Marburg disease							
	Lassa fever							
II	Acute poliomyelitis							1
	Tuberculosis	37	71	89	69	1560	335	9249
	Diphtheria							
	Severe Acute Respiratory Syndrome(SARS)							
	Avian influenza H5N1							
III	Cholera					1	1	4
	Shigellosis		1	4	1	31	4	71
	Enterohemorrhagic Escherichia coli infection	1		1	4	50	44	486
	Typhoid fever	1				2		12
	Paratyphoid fever					2		10
IV	Hepatitis E			1		6	2	27
	West Nile fever							
	Hepatitis A	3	5	2	2	32	10	221
	Echinococcosis							3
	Yellow fever							
	Psittacosis							2
	Omsk hemorrhagic fever							
	Relapsing fever							
	Kyasanur forest disease							
	Q fever							
	Rabies							
	Coccidioidomycosis							
	Monkeypox							
	Hemorrhagic fever with renal syndrome							
	Western equine encephalitis							
	Tick-borne encephalitis							
	Anthrax							
	Scrub typhus(Tsutsugamushi disease)				1	4	6	59
	Dengue fever			1	1	13	1	49
	Eastern equine encephalitis							
	Avian influenza (excluding H5N1)							
	Nipah virus infection							
	Japanese spotted fever					1		13
	Japanese encephalitis							
	Epidemic typhus							
	Hantavirus pulmonary syndrome							
	Herpes B virus infection							
	Glanders							
	Brucellosis							1
	Venezuelan equine encephalitis							
	Hendra virus infection							
Botulism								
Malaria	1				9	1	24	
Tularemia								
Lyme disease					1		3	
Lyssavirus infection(excluding rabies)								
Rift valley fever								
Melioidosis					1		2	
Legionellosis		1	2	1	14	4	202	
Leptospirosis					1		1	
Rocky mountain spotted fever								

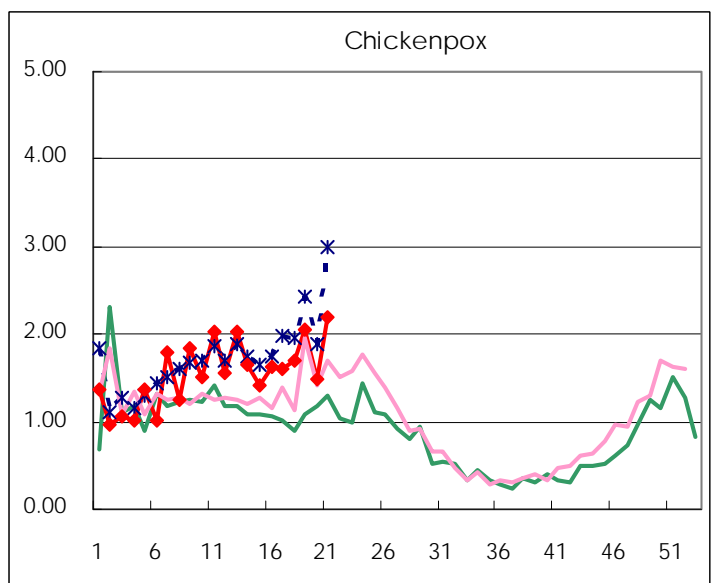
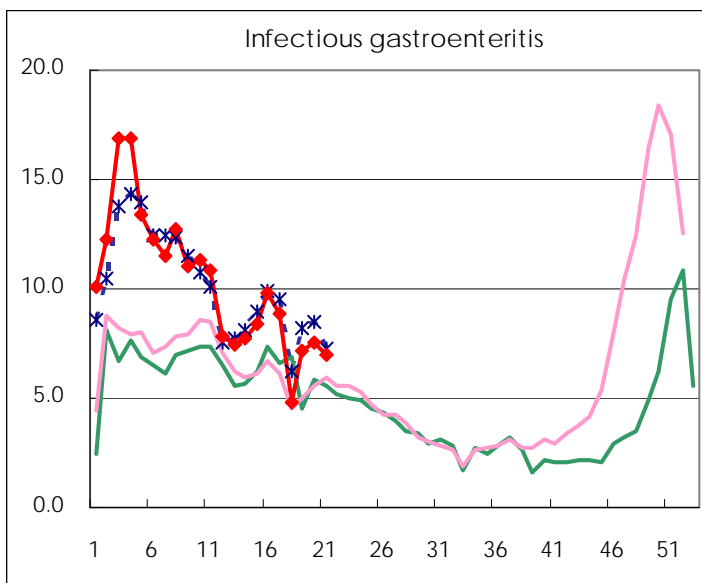
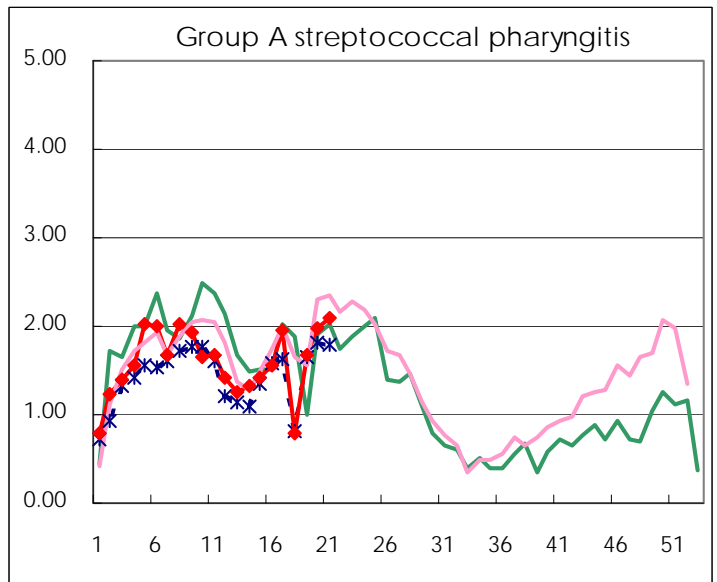
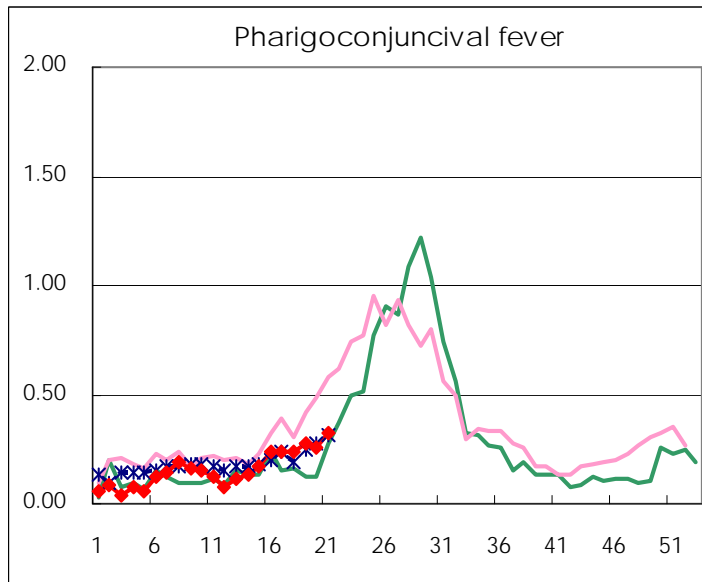
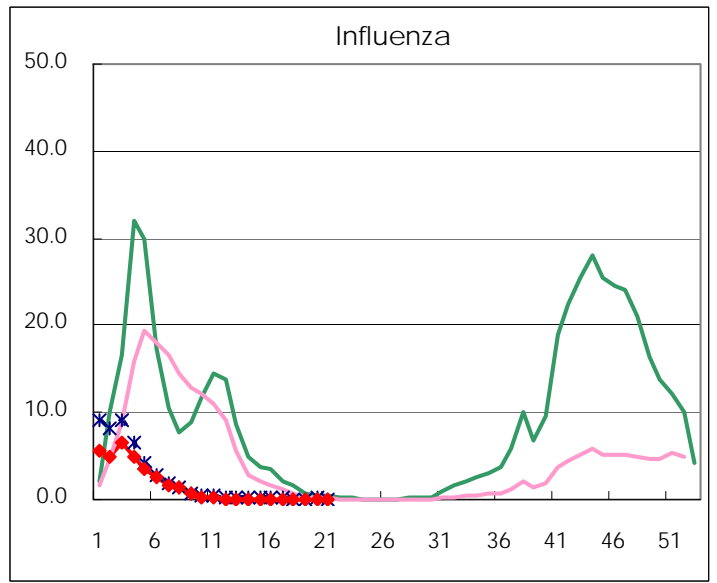
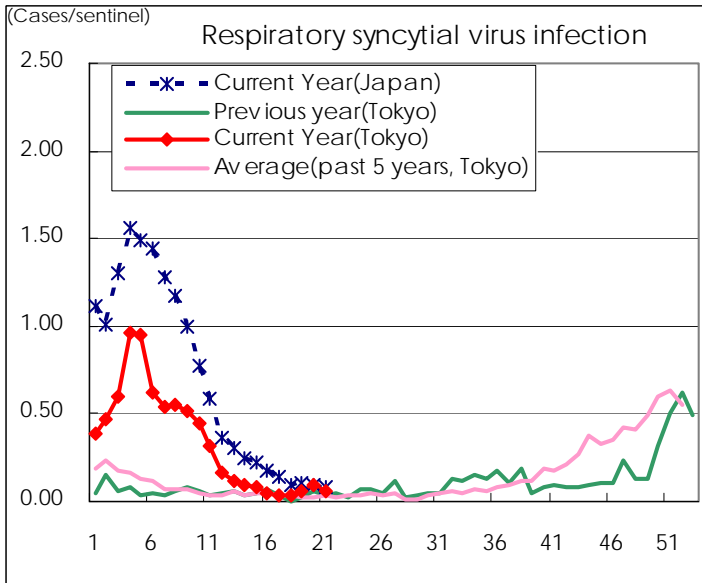
Category	Diseases	Tokyo				Japan		
		18th	19th	20th	21st	Cum 2010	21st	Cum 2010
V	Amebiasis		3	5	1	62	11	308
	Viral hepatitis(excluding hepatitis A and E)		2	2	1	20	2	78
	Acute encephalitis(excluding JE and WNE)					8	5	101
	Cryptosporidiosis					1		4
	Creutzfeldt-Jakob disease	1			1	7		54
	Severe invasive streptococcal infections(TSLS)		1	1		7		50
	Acquired immunodeficiency syndrome (AIDS)	4	15	9	11	192	15	551
	Giardiasis			1		7	2	32
	Meningococcal meningitis							3
	Congenital rubella syndrome							
	Syphilis	1	4	2	1	60	5	211
	Tetanus					2	3	32
	Vancomycin-resistant S. aureus infection							
	Vancomycin-resistant Enterococcus infection	1		1		8	2	39
	Rubella	1			1	9	1	40
Measles	1	3	2	3	32	8	217	
Novel Flu	Novel influenza (swine-origin influenza A/H1N1)	—	—	—	—	—	—	—

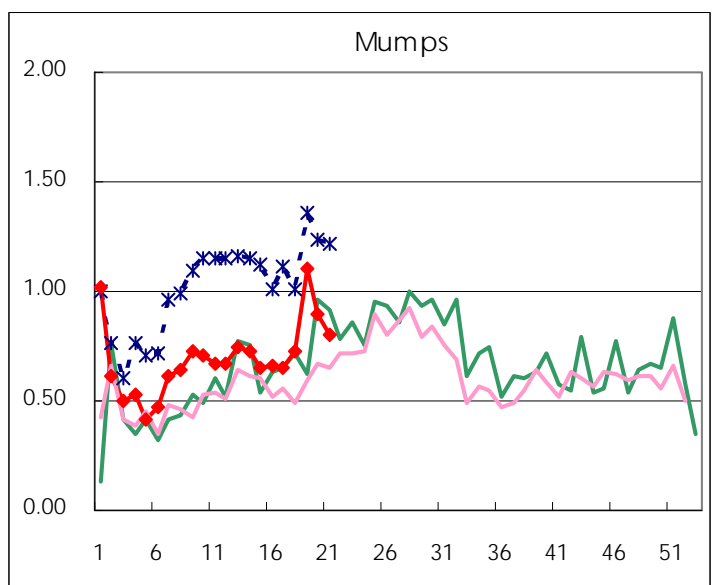
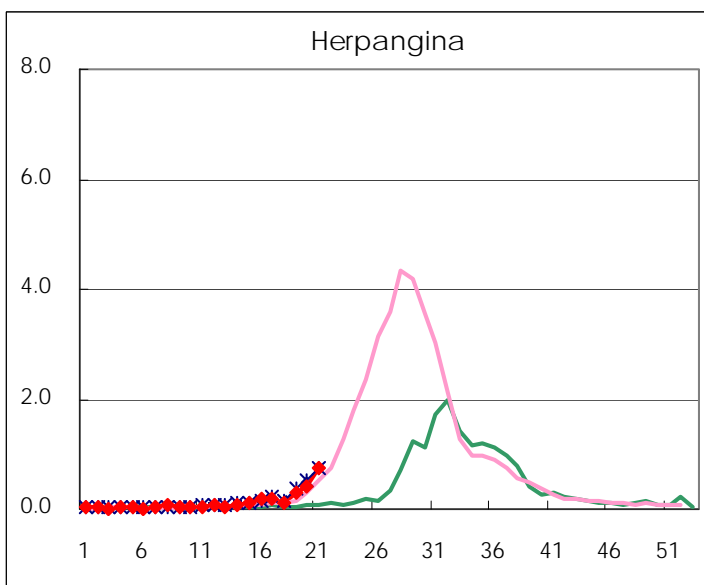
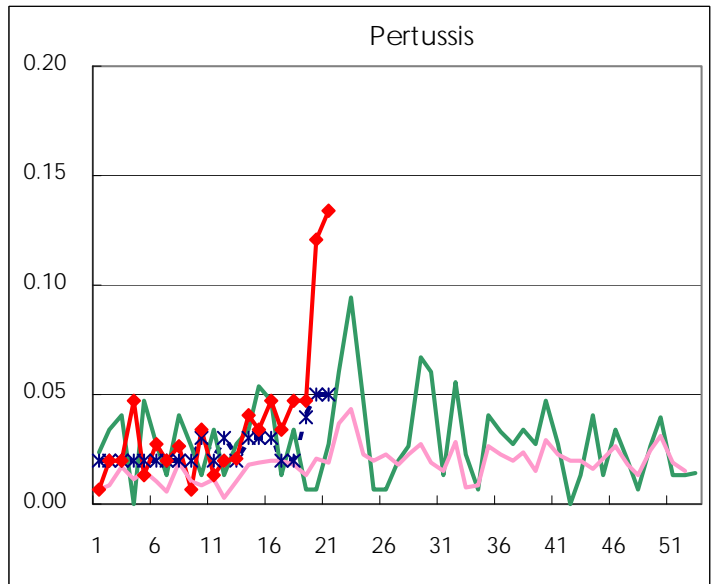
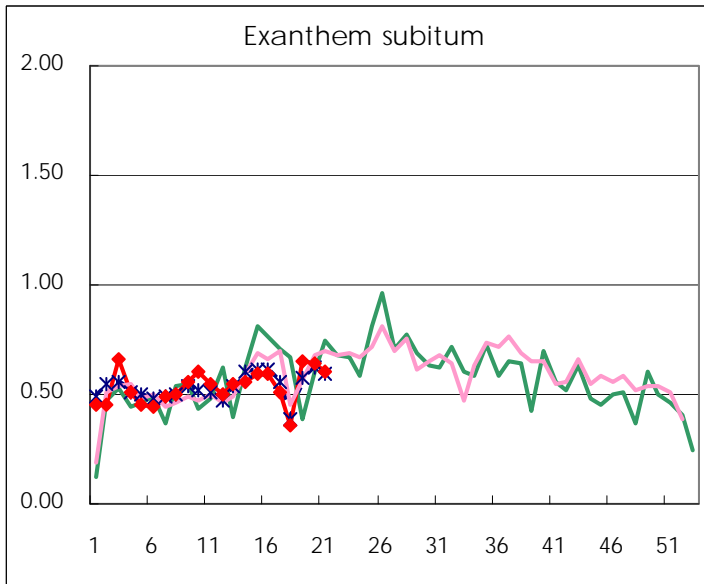
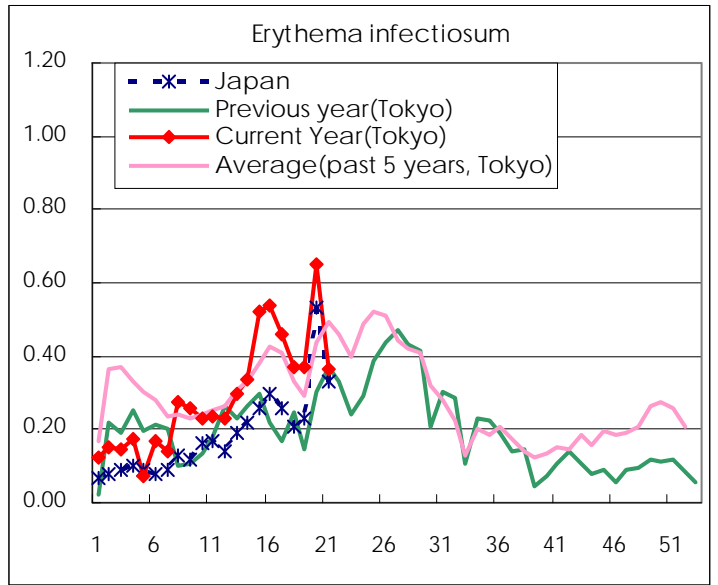
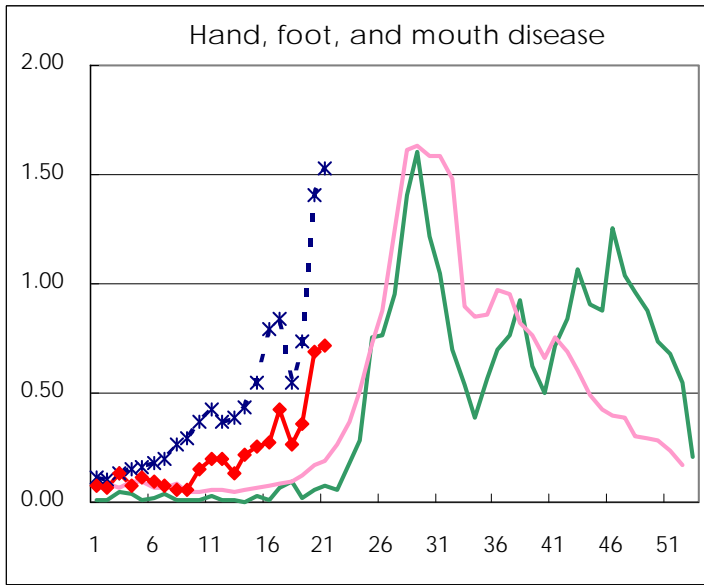
Number of patients with the diseases to be reported  
by the designated clinics and hospitals

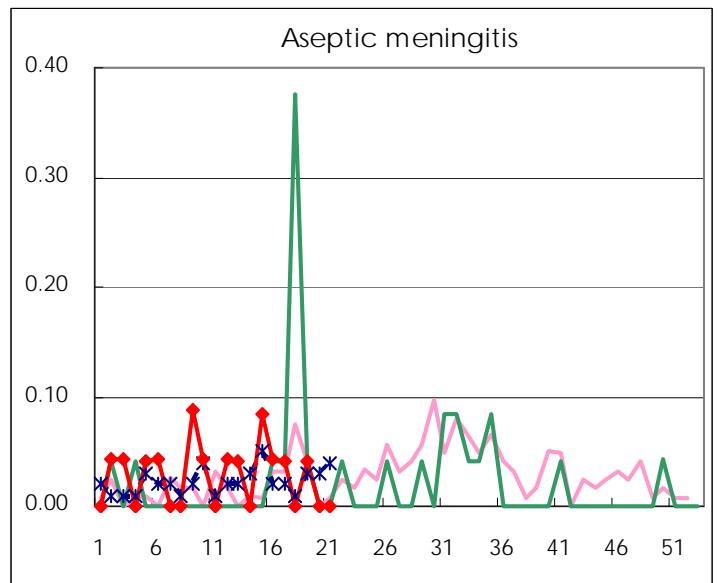
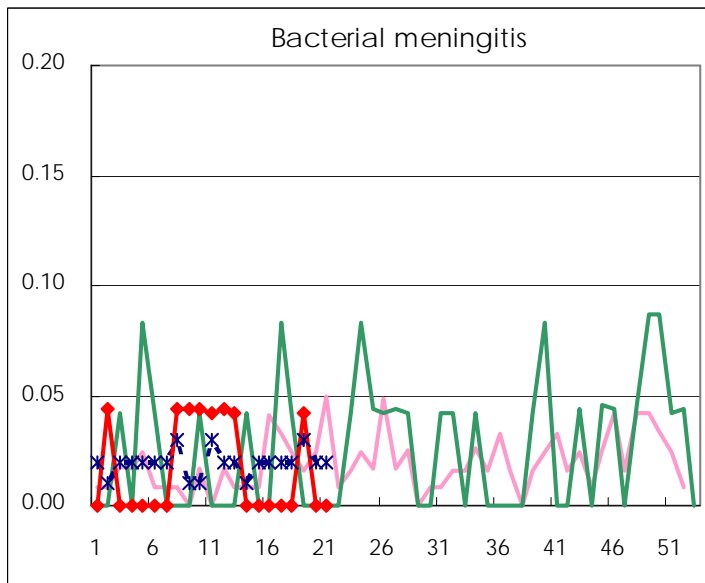
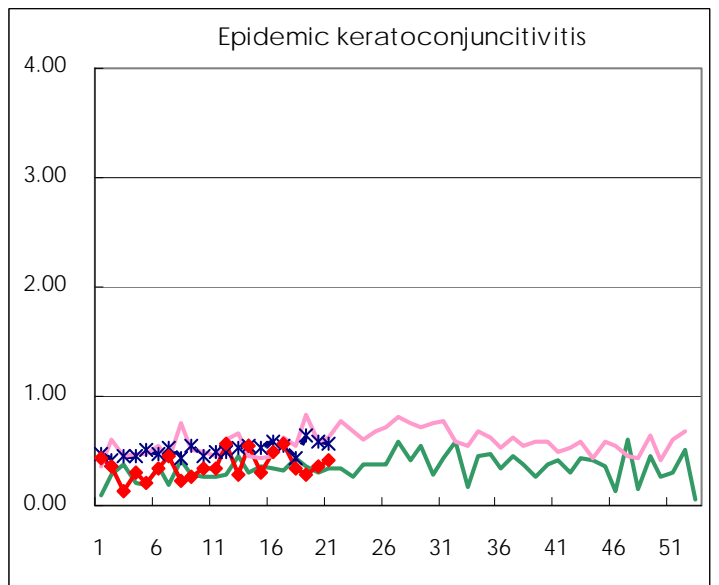
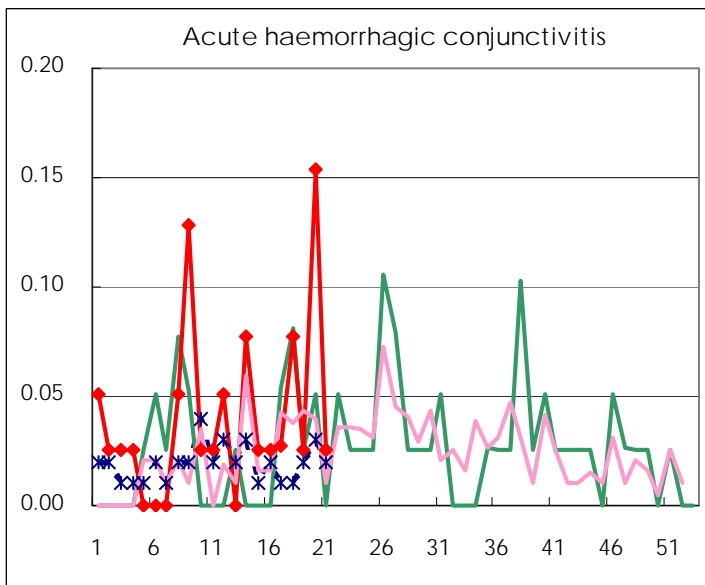
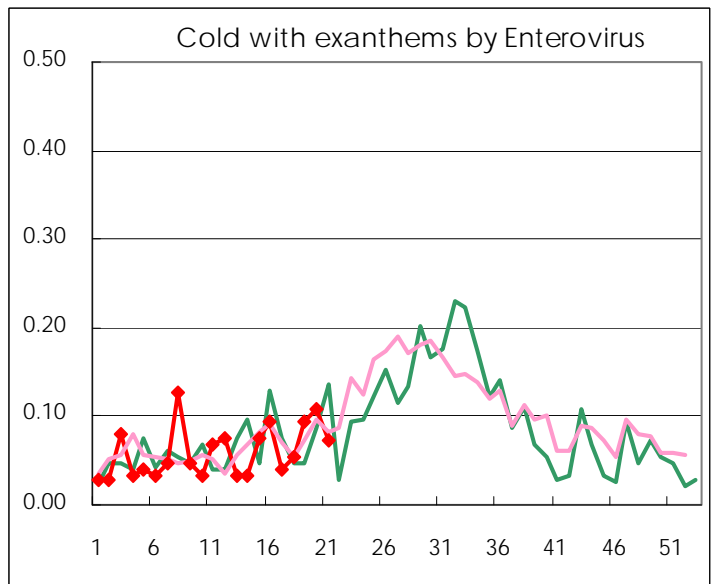
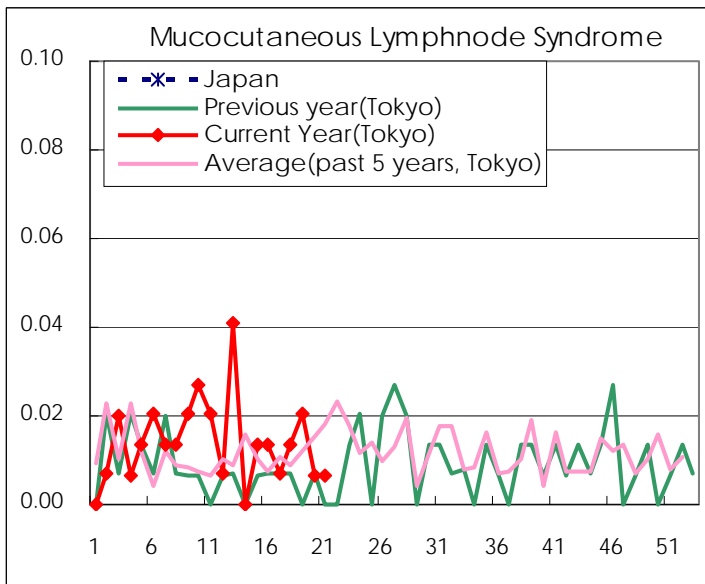
Diseases	2010				
	18th	19th	20th	21st	/sentinel
Respiratory syncytial virus infection	6	8	14	9	0.06
Pharyngoconjunctival fever	35	41	39	48	0.32
Group A streptococcal pharyngitis	118	247	295	312	2.09
Infectious gastroenteritis	709	1,055	1,125	1,035	6.95
Chickenpox	251	302	222	326	2.19
Hand, foot, and mouth disease	39	53	103	107	0.72
Erythema infectiosum	55	55	97	54	0.36
Exanthem subitum	53	97	95	90	0.60
Pertussis	7	7	18	20	0.13
Herpangina	15	47	61	113	0.76
Mumps	107	163	133	120	0.81
Cold with exanthems by Enterovirus	8	14	16	11	0.07
Mucocutaneous Lymphnode Syndrome	2	3	1	1	0.01
Influenza	8	15	25	18	0.06
Acute hemorrhagic conjunctivitis	3	1	6	1	0.03
Epidemic keratoconjunctivitis	13	11	14	16	0.41
Bacterial meningitis		1			
Aseptic meningitis		1			
Mycoplasma pneumonia	5	5	5	7	0.30
Chlamydial pneumonia (excluding psittacosis)					

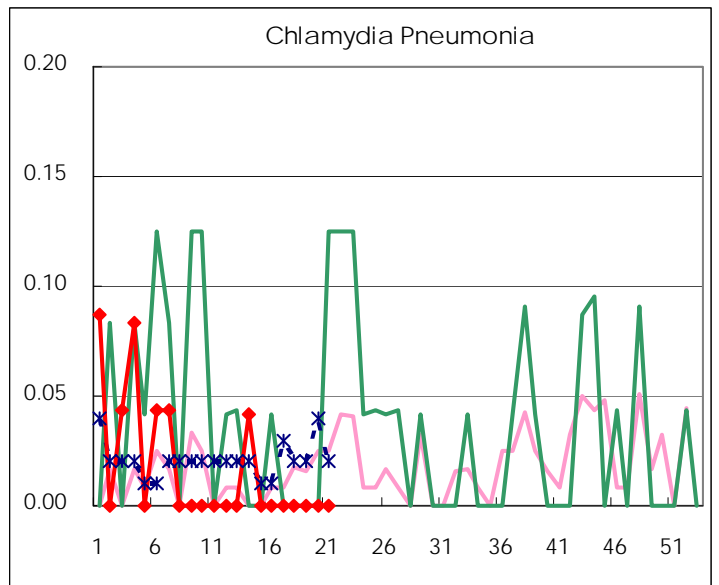
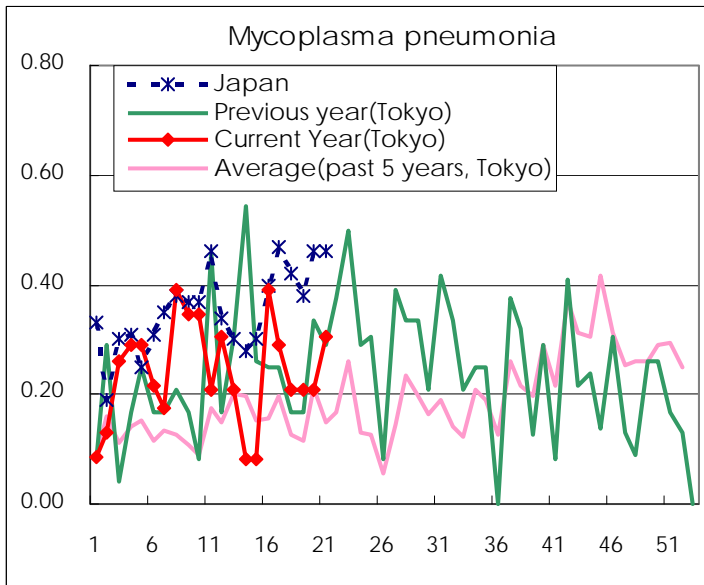
( Blank means 0. )

# Disease Trend Graph (weekly reported cases per sentinel in comparison)









Number of sentinel facilities for weekly reporting		
Types of sentinels	Number of sentinels	Sentinels having reported
Pediatric	150	149
Influenza	290	286
Ophthalmic	39	39
Specially-designated	24	23

Tokyo Metropolitan Government  
**Infectious Disease Surveillance Center**