

---

INFECTIOUS DISEASES WEEKLY REPORT

# TOKYO iDWR

Tokyo Metropolitan Infectious Disease Surveillance Center

## 17 June 2010 / Number 23

### Surveillance System in Tokyo, Japan

The infectious diseases which all physicians must report

All physicians must report to health centers the incidence of the diseases which are shown at page one. Health centers electronically report the individual cases to Tokyo Metropolitan Infectious Disease Surveillance Center.

The infectious diseases required to be reported by the sentinels

The numbers of patients who visit the sentinel clinics or hospitals during a week are reported to health centers in Tokyo. And they electronically report the numbers to Tokyo Metropolitan Infectious Disease Surveillance Center. We have about 400 sentinel clinics and hospitals in Tokyo.

1st Week is early January and 52nd Week is end of December.

Tokyo Metropolitan Institute of Public Health  
Epidemiological Information Office

TEL:81-3-3363-3213 FAX:81-3-5332-7365

e-mail:[idsc@tokyo-eiken.go.jp](mailto:idsc@tokyo-eiken.go.jp)

URL:[idsc.tokyo-eiken.go.jp/](http://idsc.tokyo-eiken.go.jp/)

---

### Number of patients with the diseases which all physicians must report

Category	Diseases	Tokyo				Japan		
		20th	21st	22nd	23rd	Cum 2010	23rd	Cum 2010
I	Ebola hemorrhagic fever							
	Crimean-Congo hemorrhagic fever							
	Smallpox							
	South American hemorrhagic fever							
	Plague							
	Marburg disease							
	Lassa fever							
II	Acute poliomyelitis							1
	Tuberculosis	114	96	71	55	1770	307	10302
	Diphtheria							
	Severe Acute Respiratory Syndrome(SARS)							
	Avian influenza H5N1							
III	Cholera					1		4
	Shigellosis	4	1	1	1	33	4	79
	Enterohemorrhagic Escherichia coli infection	1	4	2	4	56	174	779
	Typhoid fever					2	1	14
	Paratyphoid fever					2		10
IV	Hepatitis E	1				6		29
	West Nile fever							
	Hepatitis A	2	2			32	2	231
	Echinococcosis							5
	Yellow fever							
	Psittacosis							2
	Omsk hemorrhagic fever							
	Relapsing fever							
	Kyasanur forest disease							
	Q fever							
	Rabies							
	Coccidioidomycosis							
	Monkeypox							
	Hemorrhagic fever with renal syndrome							
	Western equine encephalitis							
	Tick-borne encephalitis							
	Anthrax							
	Scrub typhus(Tsutsugamushi disease)		1		1	5	8	83
	Dengue fever	1	1		2	15	1	51
	Eastern equine encephalitis							
	Avian influenza (excluding H5N1)							
	Nipah virus infection							
	Japanese spotted fever					1	2	16
	Japanese encephalitis							
	Epidemic typhus							
	Hantavirus pulmonary syndrome							
	Herpes B virus infection							
	Glanders							
	Brucellosis							1
	Venezuelan equine encephalitis							
	Hendra virus infection							
	Botulism							
Malaria					9		24	
Tularemia								
Lyme disease					1		3	
Lyssavirus infection(excluding rabies)								
Rift valley fever								
Melioidosis					1		2	
Legionellosis	2	1			14	10	224	
Leptospirosis				1	2	1	2	
Rocky mountain spotted fever								

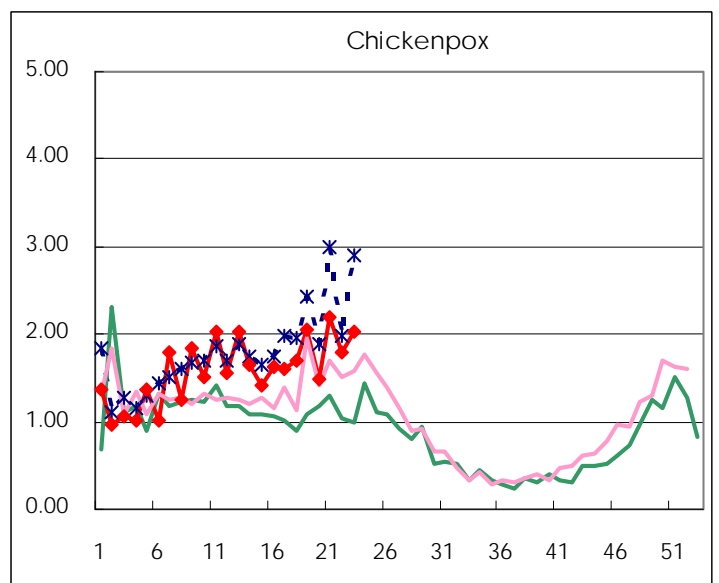
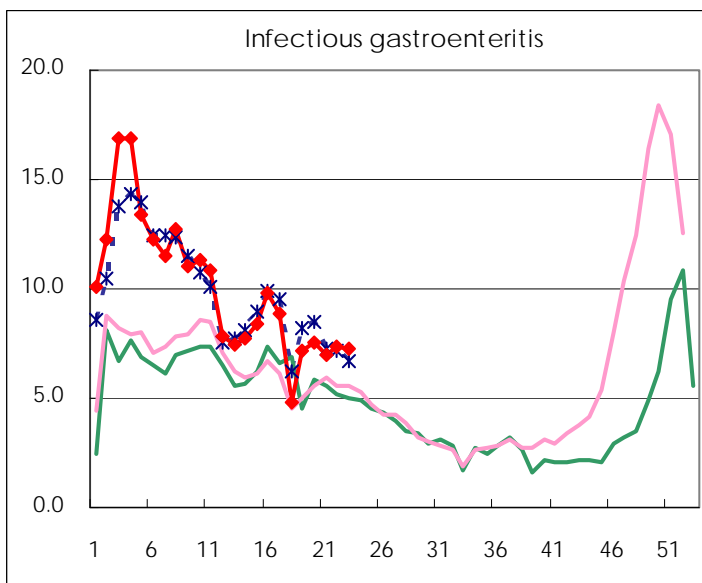
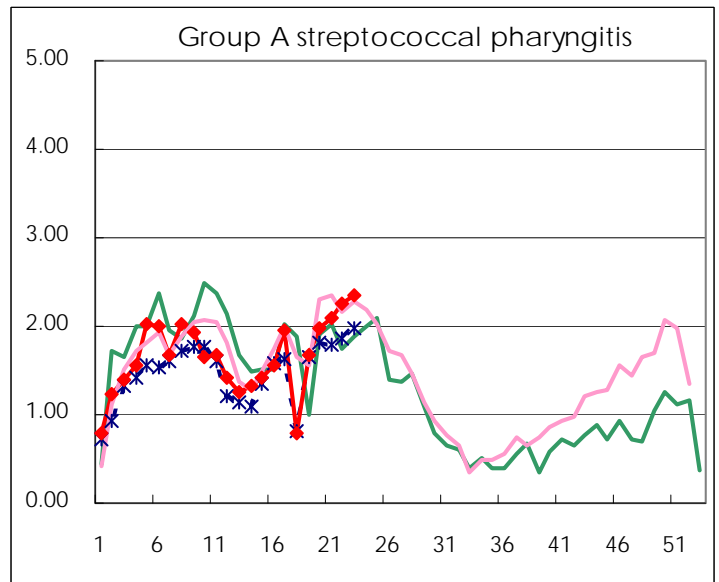
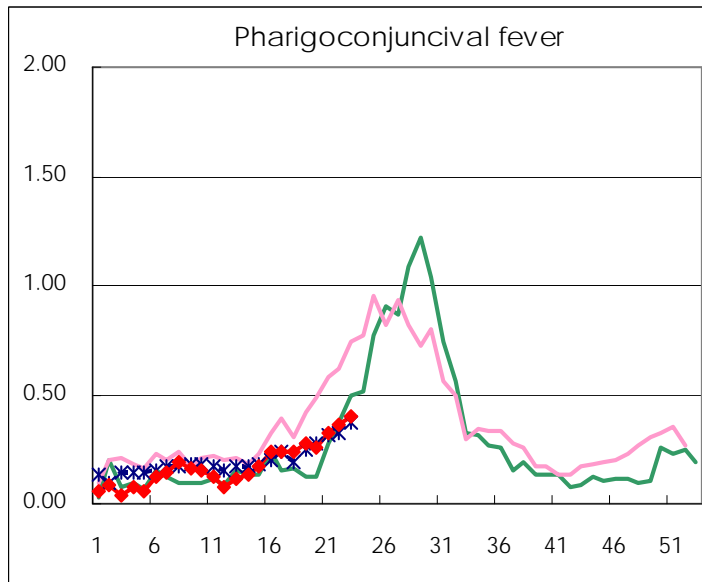
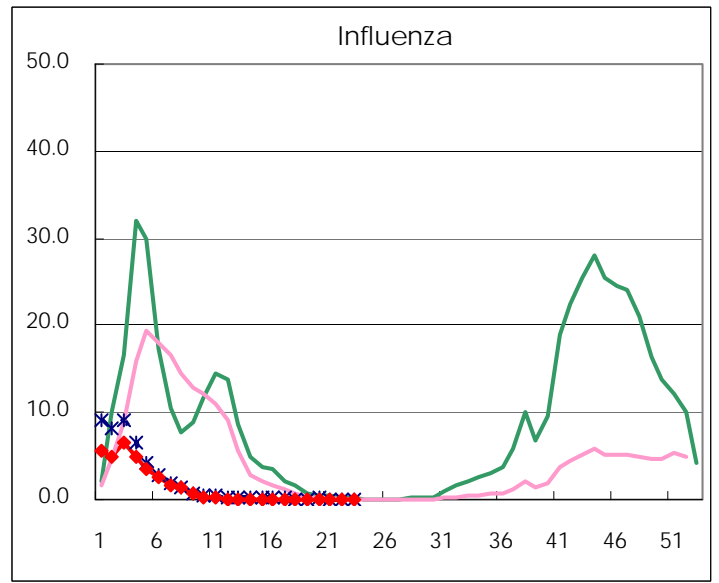
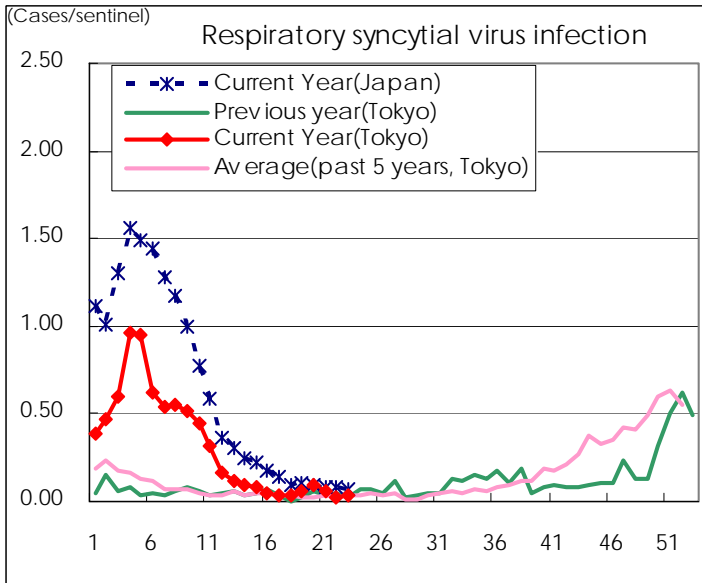
Category	Diseases	Tokyo					Japan	
		20th	21st	22nd	23rd	Cum 2010	23rd	Cum 2010
V	Amebiasis	5	1	9	6	77	9	346
	Viral hepatitis(excluding hepatitis A and E)	2	1			20	2	82
	Acute encephalitis(excluding JE and WNE)					8	1	105
	Cryptosporidiosis					1	1	5
	Creutzfeldt-Jakob disease		1		2	9	6	65
	Severe invasive streptococcal infections(TSLS)	1			2	9	4	57
	Acquired immunodeficiency syndrome (AIDS)	9	11	9	7	208	23	619
	Giardiasis	1		1		8	1	35
	Meningococcal meningitis							4
	Congenital rubella syndrome							
	Syphilis	2	1	6	4	70	8	243
	Tetanus					2	1	38
	Vancomycin-resistant S. aureus infection							
	Vancomycin-resistant Enterococcus infection	1				8	1	44
	Rubella		1	1		10	2	46
Measles	2	3	2	5	39	11	240	
Novel Flu	Novel influenza (swine-origin influenza A/H1N1)	—	—	—	—		—	

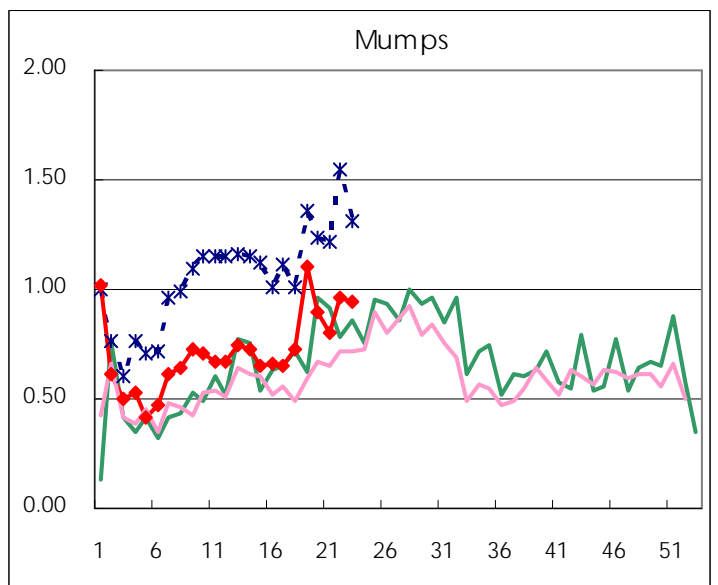
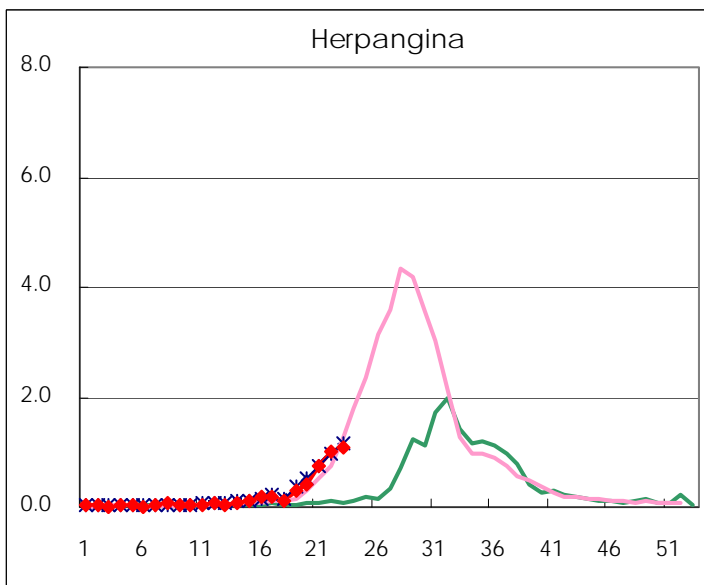
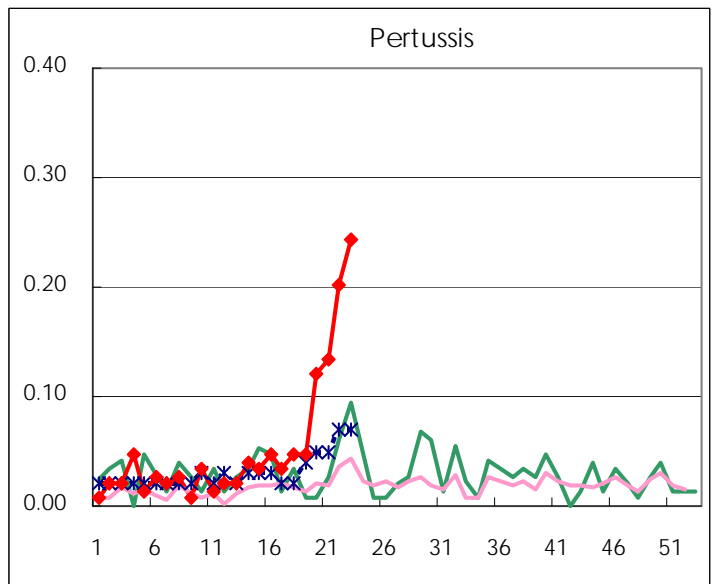
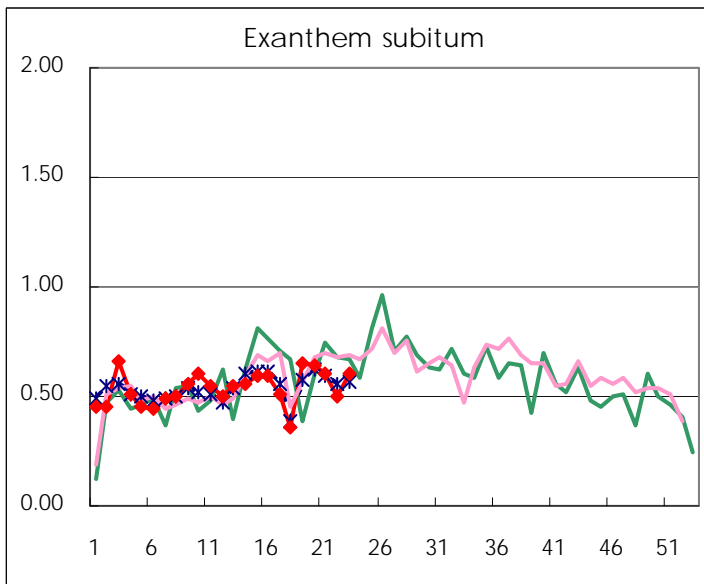
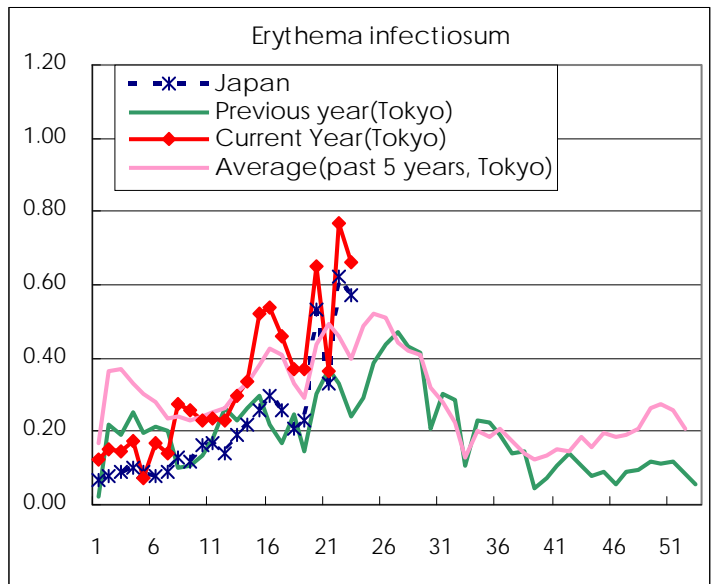
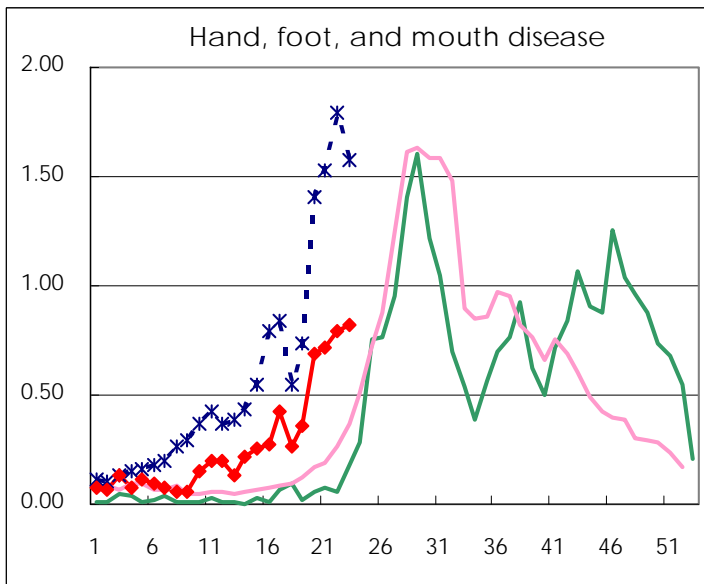
Number of patients with the diseases to be reported  
by the designated clinics and hospitals

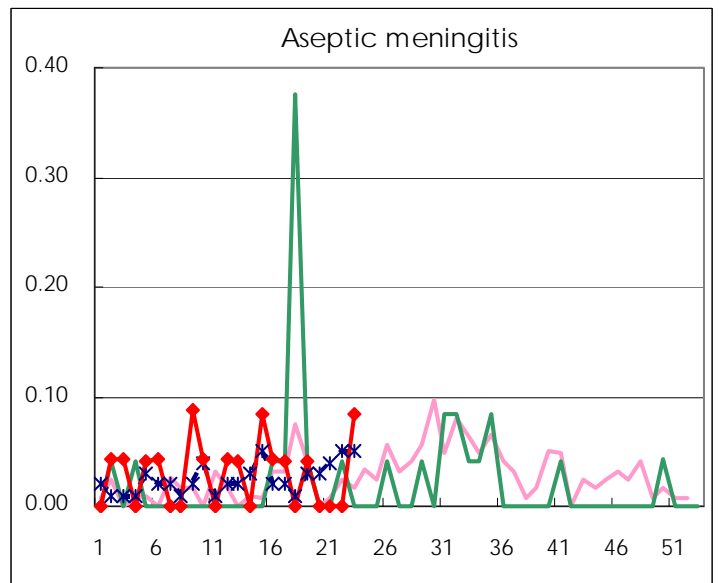
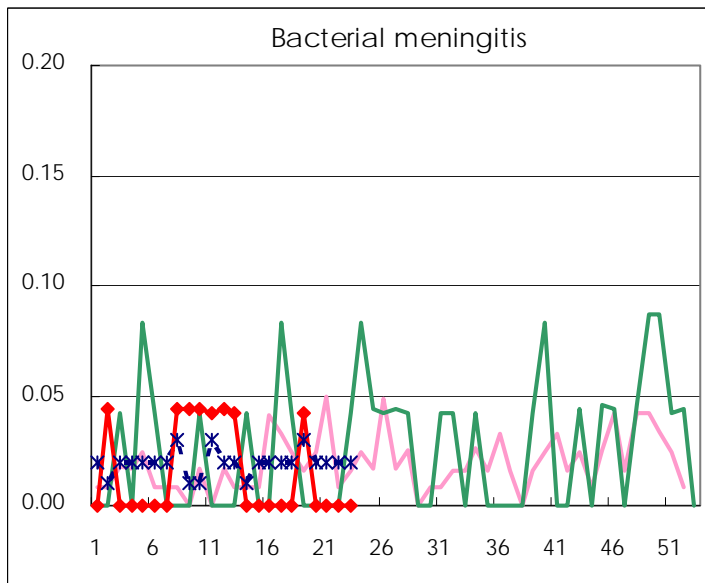
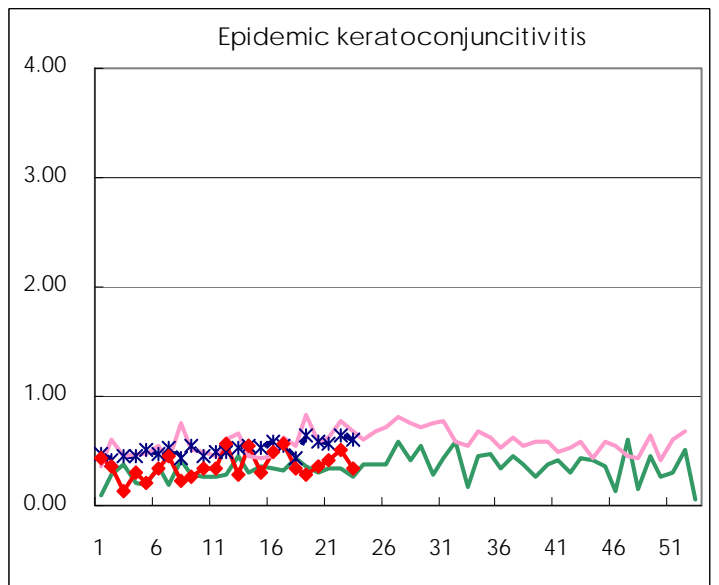
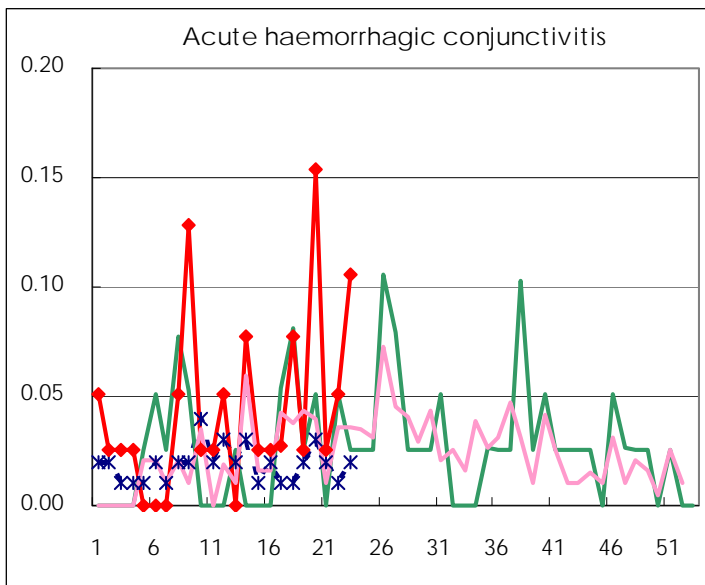
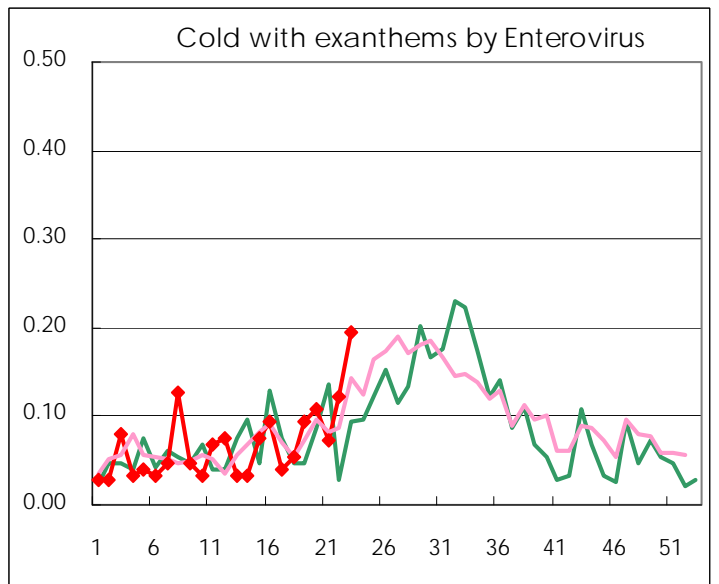
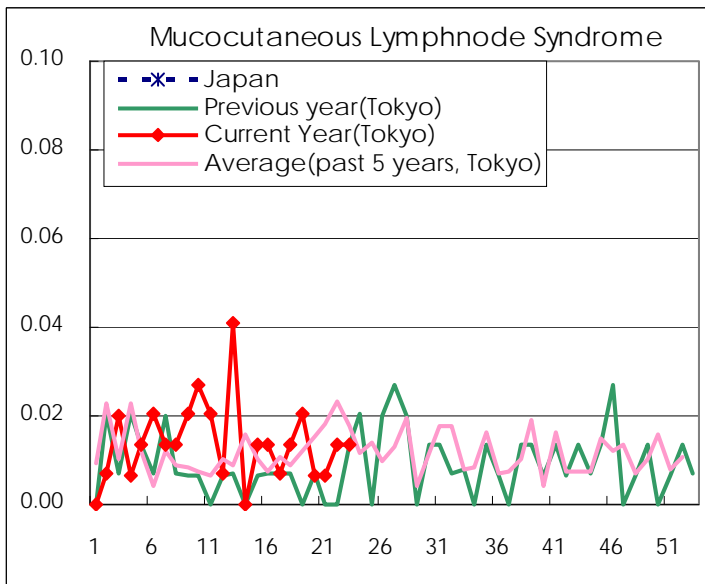
Diseases	2010				
	20th	21st	22nd	23rd	/sentinel
Respiratory syncytial virus infection	14	9	4	5	0.03
Pharyngoconjunctival fever	39	48	54	59	0.40
Group A streptococcal pharyngitis	295	312	335	349	2.36
Infectious gastroenteritis	1,125	1,035	1,092	1,075	7.26
Chickenpox	222	326	264	300	2.03
Hand, foot, and mouth disease	103	107	117	122	0.82
Erythema infectiosum	97	54	114	98	0.66
Exanthem subitum	95	90	74	90	0.61
Pertussis	18	20	30	36	0.24
Herpangina	61	113	150	158	1.07
Mumps	133	120	143	139	0.94
Cold with exanthems by Enterovirus	16	11	18	29	0.20
Mucocutaneous Lymphnode Syndrome	1	1	2	2	0.01
Influenza	25	18	24	13	0.05
Acute hemorrhagic conjunctivitis	6	1	2	4	0.11
Epidemic keratoconjunctivitis	14	16	20	13	0.34
Bacterial meningitis					
Aseptic meningitis				2	0.08
Mycoplasma pneumonia	5	8	8	9	0.38
Chlamydial pneumonia (excluding psittacosis)					

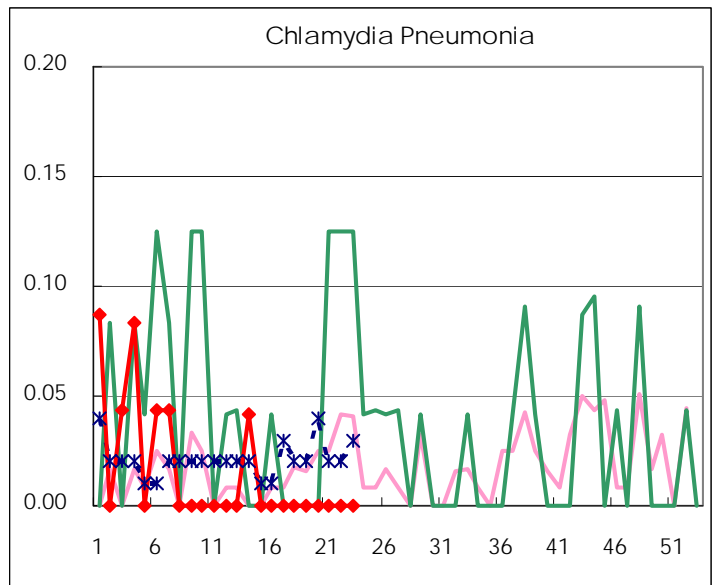
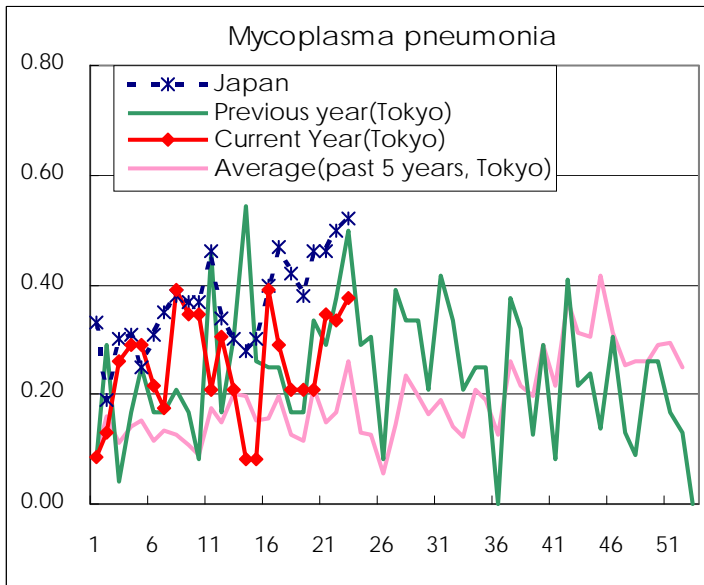
( Blank means 0. )

# Disease Trend Graph (weekly reported cases per sentinel in comparison)









Number of sentinel facilities for weekly reporting		
Types of sentinels	Number of sentinels	Sentinels having reported
Pediatric	150	148
Influenza	290	284
Ophthalmic	39	38
Specially-designated	24	24

Tokyo Metropolitan Government  
**Infectious Disease Surveillance Center**