
INFECTIOUS DISEASES WEEKLY REPORT

TOKYO IDWR

Tokyo Metropolitan Infectious Disease Surveillance Center

24 June 2010 / Number 24

Surveillance System in Tokyo, Japan

The infectious diseases which all physicians must report

All physicians must report to health centers the incidence of the diseases which are shown at page one. Health centers electronically report the individual cases to Tokyo Metropolitan Infectious Disease Surveillance Center.

The infectious diseases required to be reported by the sentinels

The numbers of patients who visit the sentinel clinics or hospitals during a week are reported to health centers in Tokyo. And they electronically report the numbers to Tokyo Metropolitan Infectious Disease Surveillance Center. We have about 400 sentinel clinics and hospitals in Tokyo.

1st Week is early January and 52nd Week is end of December.

Tokyo Metropolitan Institute of Public Health
Epidemiological Information Office

TEL:81-3-3363-3213 FAX:81-3-5332-7365

e-mail:idsc@tokyo-eiken.go.jp

URL:idsc.tokyo-eiken.go.jp/

Number of patients with the diseases which all physicians must report

Category	Diseases	Tokyo				Japan		
		21st	22nd	23rd	24th	Cum 2010	24th	Cum 2010
I	Ebola hemorrhagic fever							
	Crimean-Congo hemorrhagic fever							
	Smallpox							
	South American hemorrhagic fever							
	Plague							
	Marburg disease							
	Lassa fever							
II	Acute poliomyelitis							1
	Tuberculosis	98	74	67	61	1857	328	10789
	Diphtheria							
	Severe Acute Respiratory Syndrome(SARS)							
	Avian influenza H5N1							
III	Cholera					1		4
	Shigellosis	1	1	1		33	3	82
	Enterohemorrhagic Escherichia coli infection	4	2	4	9	64	128	920
	Typhoid fever					2	1	15
	Paratyphoid fever					2	1	12
IV	Hepatitis E					6	2	31
	West Nile fever							
	Hepatitis A	2				32	6	242
	Echinococcosis							5
	Yellow fever							
	Psittacosis							2
	Omsk hemorrhagic fever							
	Relapsing fever							
	Kyasanur forest disease							
	Q fever							
	Rabies							
	Coccidioidomycosis							
	Monkeypox							
	Hemorrhagic fever with renal syndrome							
	Western equine encephalitis							
	Tick-borne encephalitis							
	Anthrax							
	Scrub typhus(Tsutsugamushi disease)	1		1		5	3	91
	Dengue fever	1		2		15	4	55
	Eastern equine encephalitis							
	Avian influenza (excluding H5N1)							
	Nipah virus infection							
	Japanese spotted fever					1	4	20
	Japanese encephalitis							
	Epidemic typhus							
	Hantavirus pulmonary syndrome							
	Herpes B virus infection							
	Glanders							
	Brucellosis						1	2
	Venezuelan equine encephalitis							
Hendra virus infection								
Botulism								
Malaria					9		24	
Tularemia								
Lyme disease					1	1	4	
Lyssavirus infection(excluding rabies)								
Rift valley fever								
Melioidosis					1		2	
Legionellosis	1				14	7	235	
Leptospirosis			1		2		3	
Rocky mountain spotted fever								

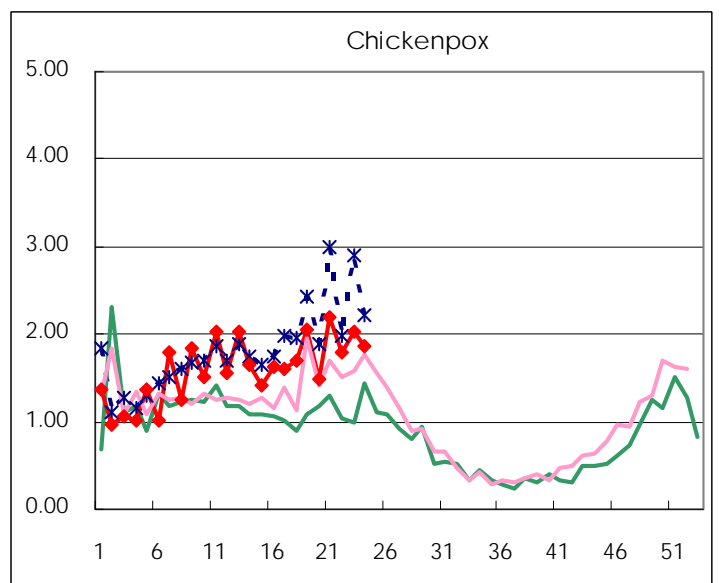
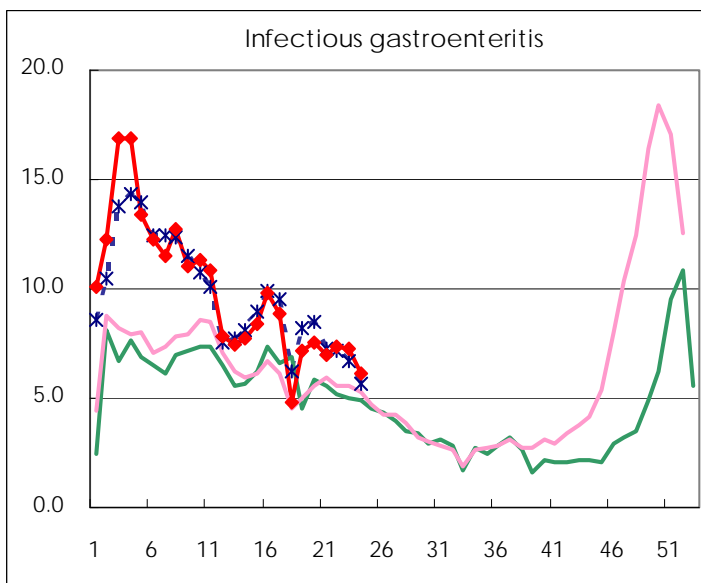
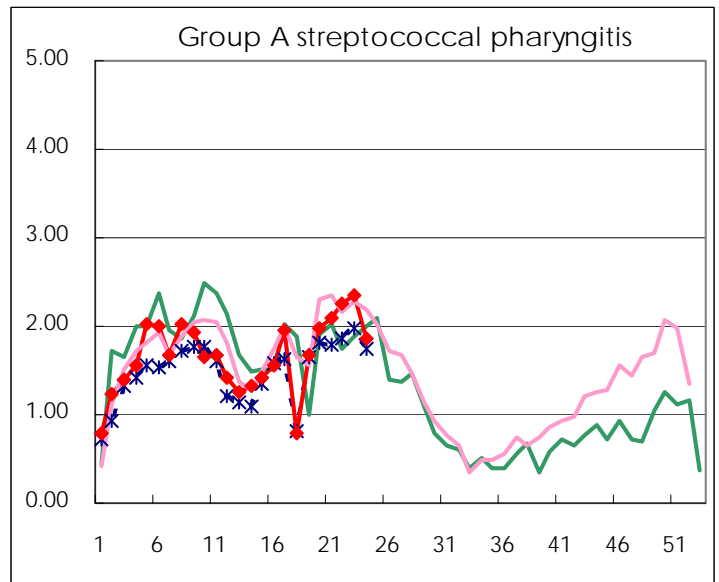
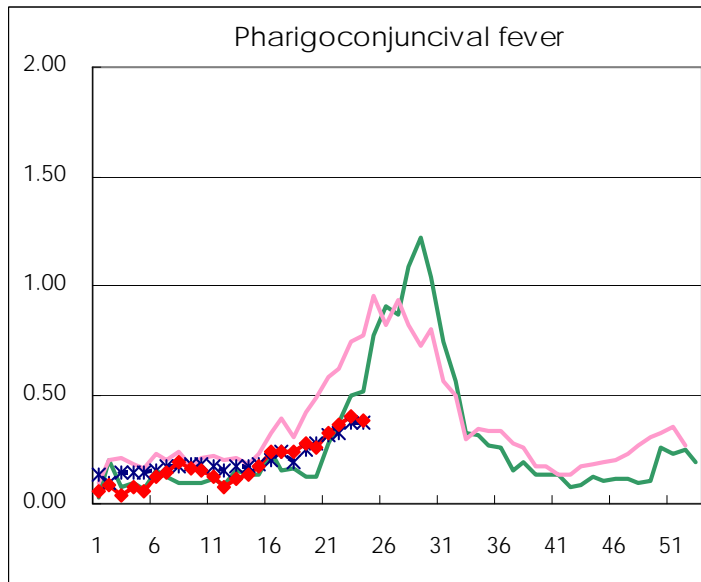
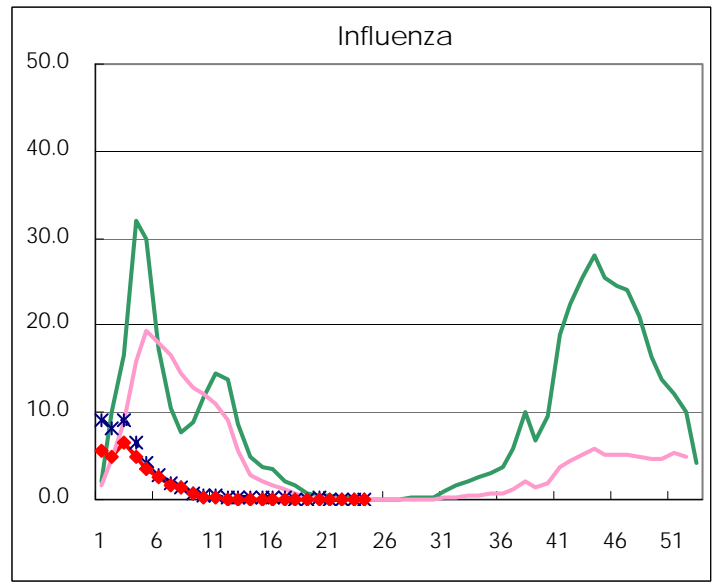
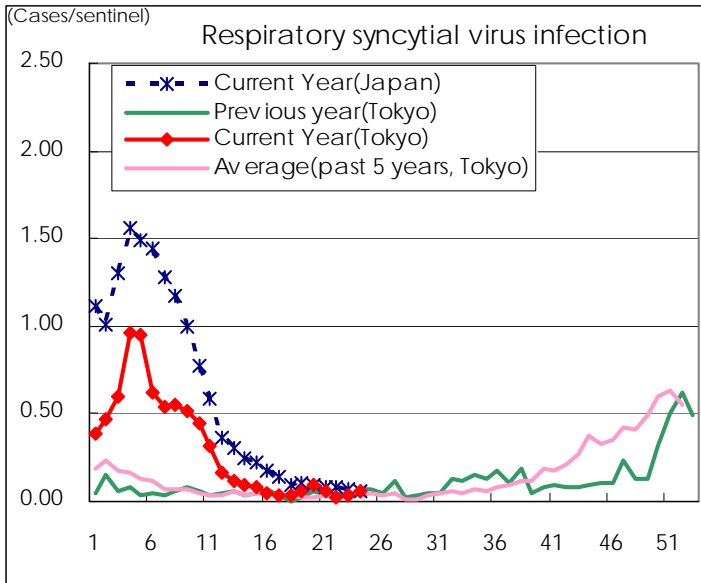
Category	Diseases	Tokyo					Japan	
		21st	22nd	23rd	24th	Cum 2010	24th	Cum 2010
V	Amebiasis	1	9	6	2	79	7	364
	Viral hepatitis(excluding hepatitis A and E)	1			2	22	3	89
	Acute encephalitis(excluding JE and WNE)					8	3	113
	Cryptosporidiosis					1		5
	Creutzfeldt-Jakob disease	1		2		9	3	69
	Severe invasive streptococcal infections(TSLS)			2		9	1	60
	Acquired immunodeficiency syndrome (AIDS)	11	9	7	9	217	16	648
	Giardiasis		1			8	3	38
	Meningococcal meningitis							4
	Congenital rubella syndrome							
	Syphilis	1	6	4	5	75	10	255
	Tetanus					2	3	42
	Vancomycin-resistant S. aureus infection							
	Vancomycin-resistant Enterococcus infection					8	1	45
	Rubella	1	1			10	2	48
Measles	3	2	5	3	42	3	249	
Novel Flu	Novel influenza (swine-origin influenza A/H1N1)	—	—	—	—		—	

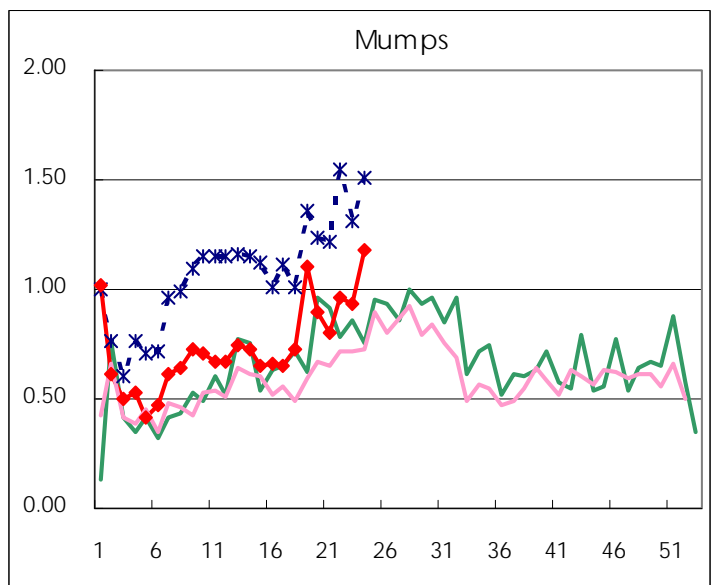
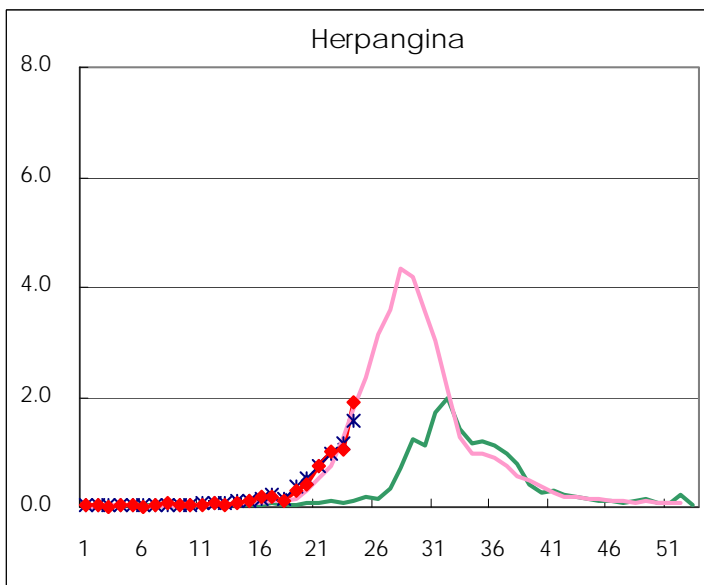
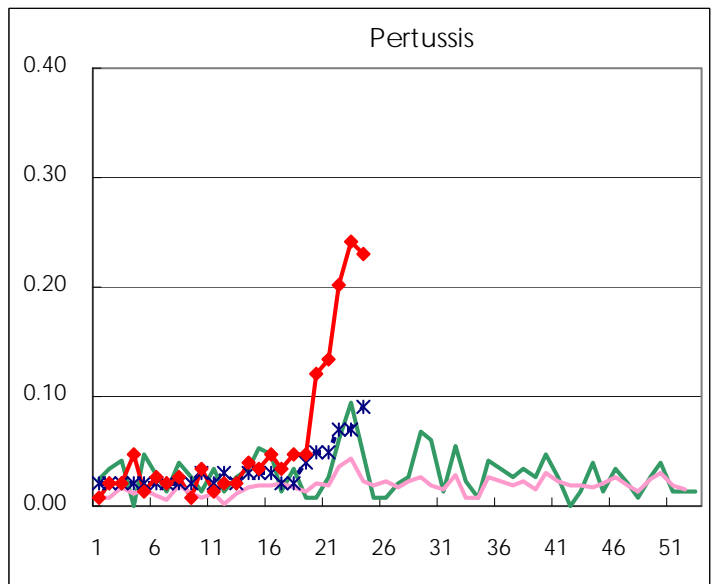
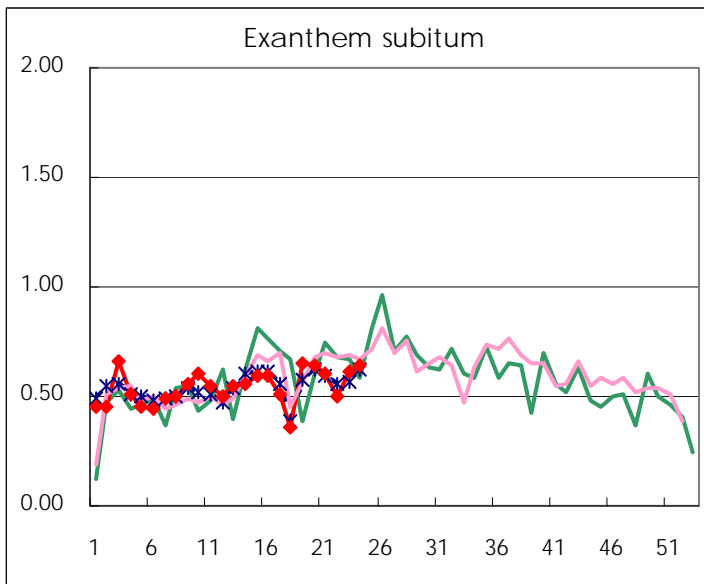
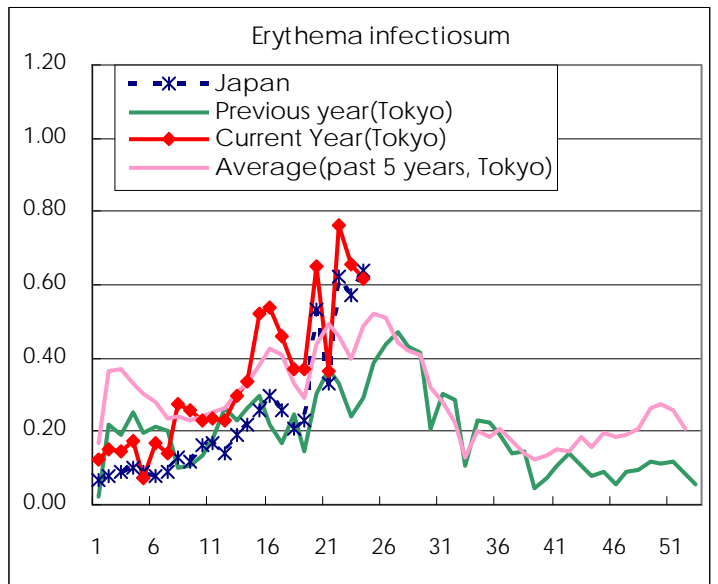
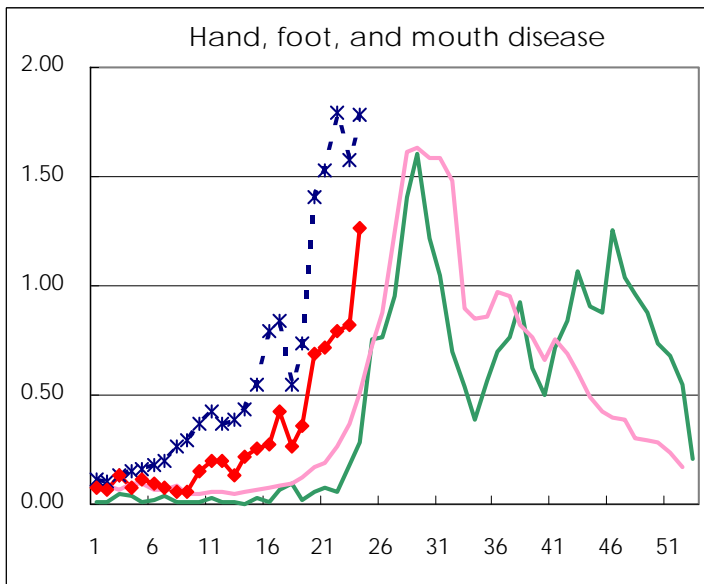
Number of patients with the diseases to be reported
by the designated clinics and hospitals

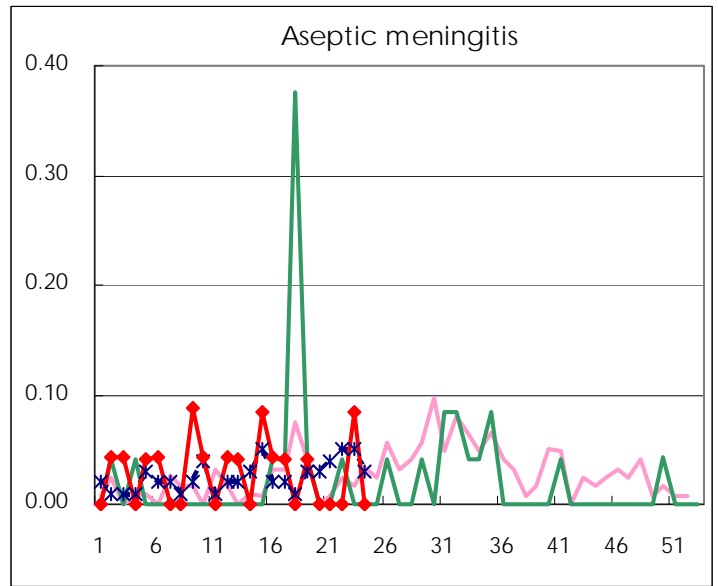
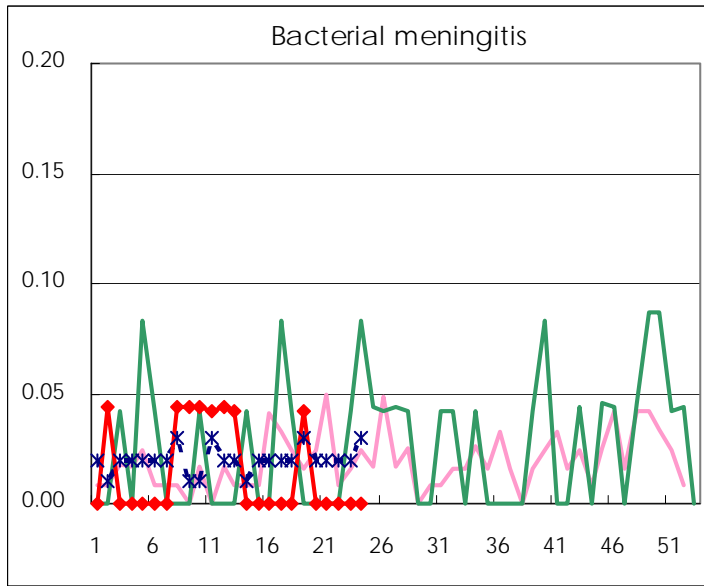
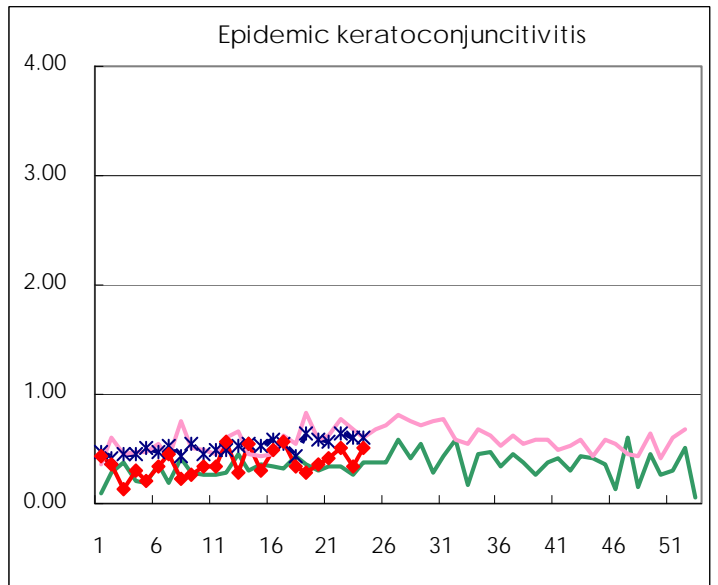
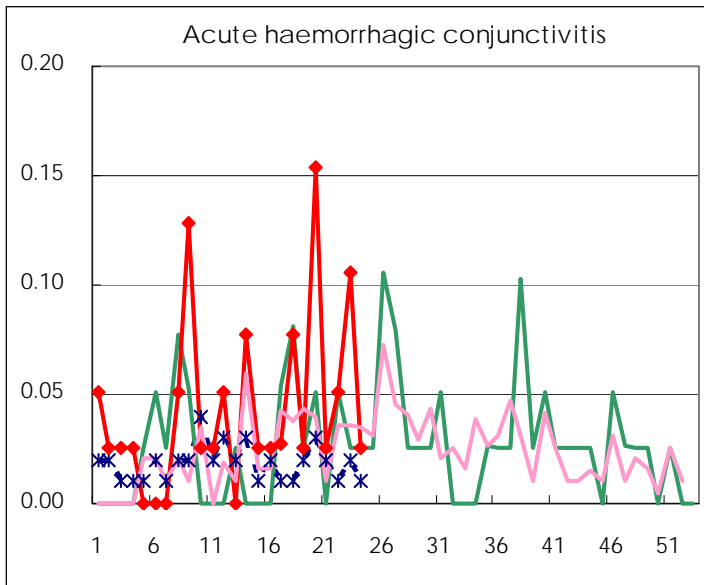
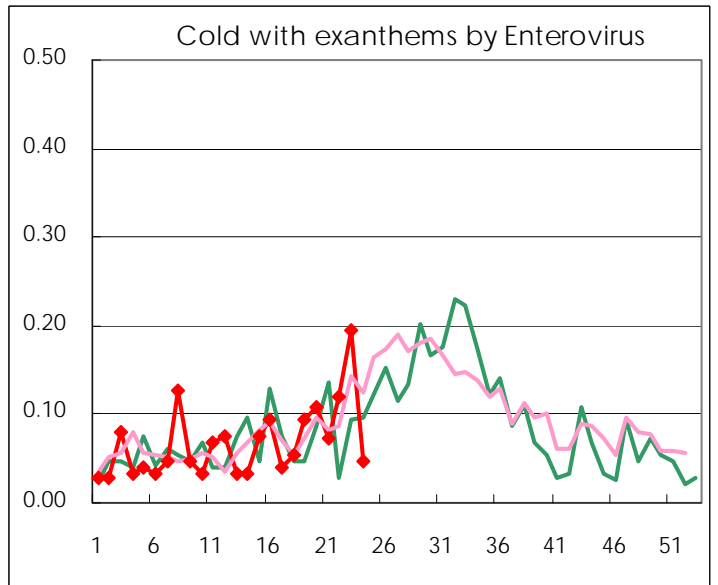
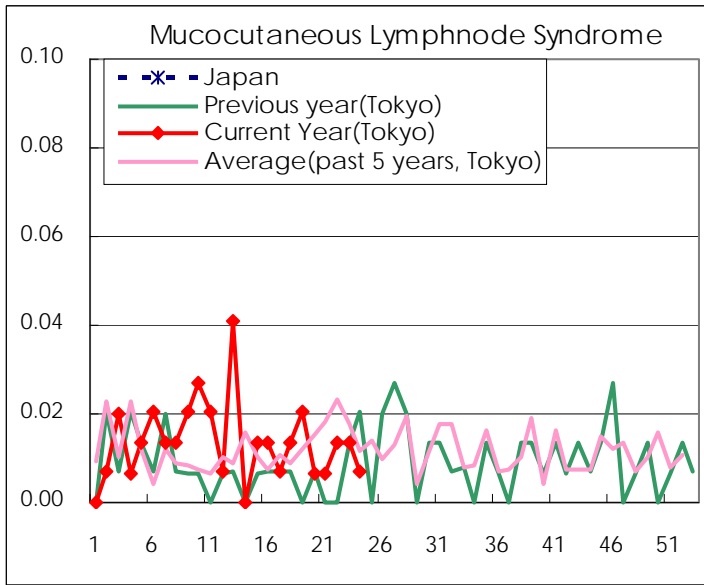
Diseases	2010				
	21st	22nd	23rd	24th	/sentinel
Respiratory syncytial virus infection	9	4	5	9	0.06
Pharyngoconjunctival fever	48	54	59	57	0.39
Group A streptococcal pharyngitis	312	335	351	274	1.85
Infectious gastroenteritis	1,035	1,092	1,077	910	6.15
Chickenpox	326	266	302	275	1.86
Hand, foot, and mouth disease	107	118	122	187	1.26
Erythema infectiosum	54	114	98	91	0.61
Exanthem subitum	90	74	91	95	0.64
Pertussis	20	30	36	34	0.23
Herpangina	113	150	158	281	1.90
Mumps	120	144	139	174	1.18
Cold with exanthems by Enterovirus	11	18	29	7	0.05
Mucocutaneous Lymphnode Syndrome	1	2	2	1	0.01
Influenza	18	24	13	15	0.05
Acute hemorrhagic conjunctivitis	1	2	4	1	0.03
Epidemic keratoconjunctivitis	16	20	13	20	0.51
Bacterial meningitis					
Aseptic meningitis			2		
Mycoplasma pneumonia	8	8	9	3	0.13
Chlamydial pneumonia (excluding psittacosis)				1	0.04

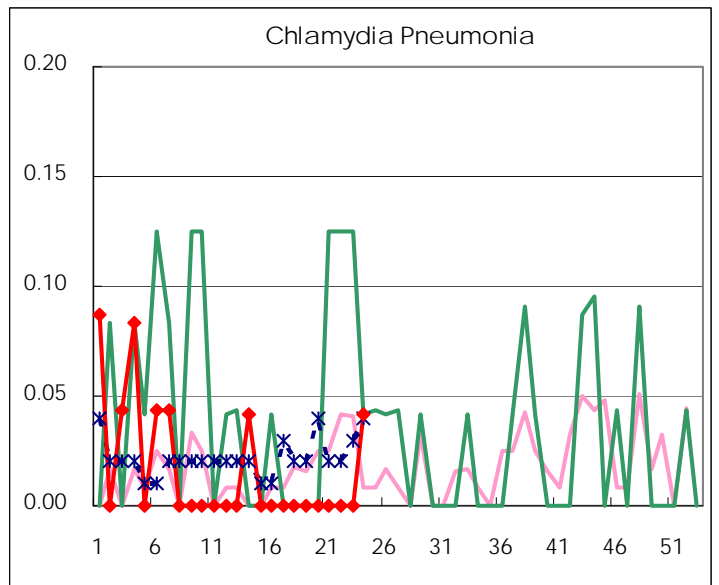
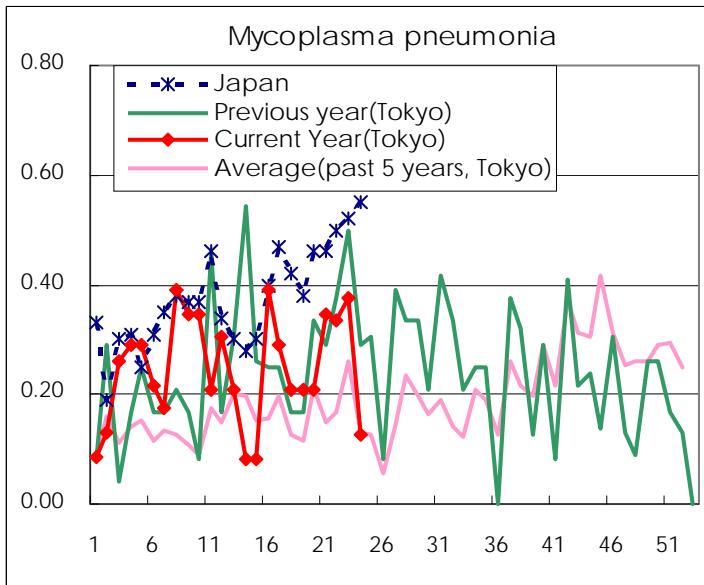
(Blank means 0.)

Disease Trend Graph (weekly reported cases per sentinel in comparison)









Number of sentinel facilities for weekly reporting		
Types of sentinels	Number of sentinels	Sentinels having reported
Pediatric	150	148
Influenza	290	285
Ophthalmic	39	39
Specially-designated	24	24

Tokyo Metropolitan Government
Infectious Disease Surveillance Center