

---

INFECTIOUS DISEASES WEEKLY REPORT

# TOKYO IDWR

Tokyo Metropolitan Infectious Disease Surveillance Center

## 1 July 2010 / Number 25

### Surveillance System in Tokyo, Japan

The infectious diseases which all physicians must report

All physicians must report to health centers the incidence of the diseases which are shown at page one. Health centers electronically report the individual cases to Tokyo Metropolitan Infectious Disease Surveillance Center.

The infectious diseases required to be reported by the sentinels

The numbers of patients who visit the sentinel clinics or hospitals during a week are reported to health centers in Tokyo. And they electronically report the numbers to Tokyo Metropolitan Infectious Disease Surveillance Center. We have about 400 sentinel clinics and hospitals in Tokyo.

1st Week is early January and 52nd Week is end of December.

Tokyo Metropolitan Institute of Public Health  
Epidemiological Information Office

TEL:81-3-3363-3213 FAX:81-3-5332-7365

e-mail:[idsc@tokyo-eiken.go.jp](mailto:idsc@tokyo-eiken.go.jp)

URL:[idsc.tokyo-eiken.go.jp/](http://idsc.tokyo-eiken.go.jp/)

---

### Number of patients with the diseases which all physicians must report

Category	Diseases	Tokyo				Japan		
		22nd	23rd	24th	25th	Cum 2010	25th	Cum 2010
I	Ebola hemorrhagic fever							
	Crimean-Congo hemorrhagic fever							
	Smallpox							
	South American hemorrhagic fever							
	Plague							
	Marburg disease							
	Lassa fever							
II	Acute poliomyelitis							1
	Tuberculosis	77	73	79	59	1967	336	11463
	Diphtheria							
	Severe Acute Respiratory Syndrome(SARS)							
	Avian influenza H5N1							
III	Cholera					1		4
	Shigellosis	1	1		1	34	3	86
	Enterohemorrhagic Escherichia coli infection	2	4	10	12	78	77	1,026
	Typhoid fever				1	3		15
	Paratyphoid fever					2		12
IV	Hepatitis E					6	1	34
	West Nile fever							
	Hepatitis A					32	7	254
	Echinococcosis							5
	Yellow fever							
	Psittacosis							3
	Omsk hemorrhagic fever							
	Relapsing fever							
	Kyasanur forest disease							
	Q fever							
	Rabies							
	Coccidioidomycosis							
	Monkeypox							
	Hemorrhagic fever with renal syndrome							
	Western equine encephalitis							
	Tick-borne encephalitis							
	Anthrax							
	Scrub typhus(Tsutsugamushi disease)		1			5	4	97
	Dengue fever		2		2	17	4	59
	Eastern equine encephalitis							
	Avian influenza (excluding H5N1)							
	Nipah virus infection							
	Japanese spotted fever					1	4	24
	Japanese encephalitis							
	Epidemic typhus							
	Hantavirus pulmonary syndrome							
	Herpes B virus infection							
	Glanders							
	Brucellosis							2
	Venezuelan equine encephalitis							
Hendra virus infection								
Botulism								
Malaria					9	4	28	
Tularemia								
Lyme disease					1		4	
Lyssavirus infection(excluding rabies)								
Rift valley fever								
Melioidosis					1		2	
Legionellosis				2	16	10	244	
Leptospirosis			1		2		3	
Rocky mountain spotted fever								

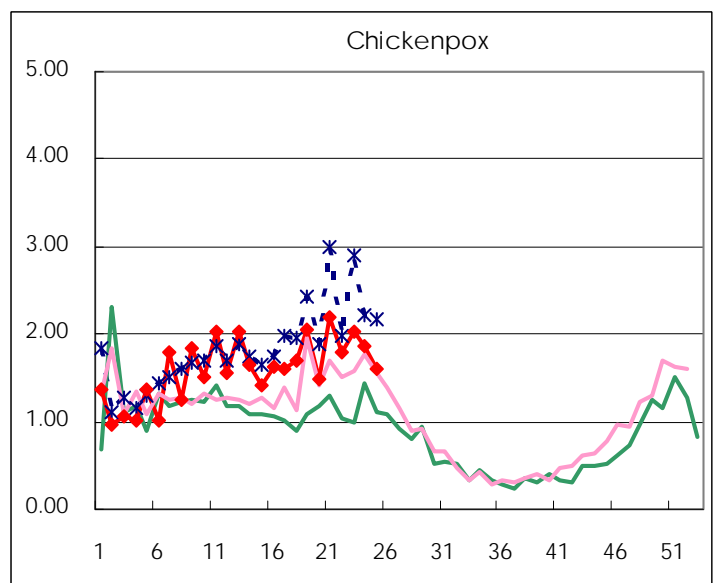
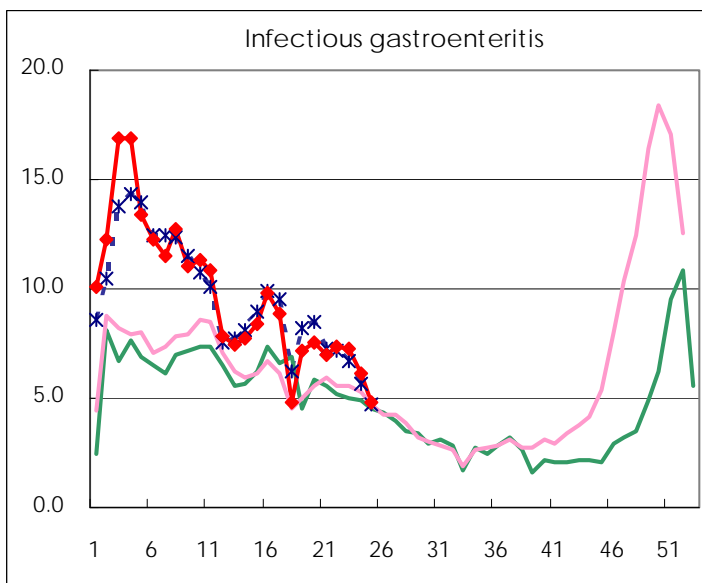
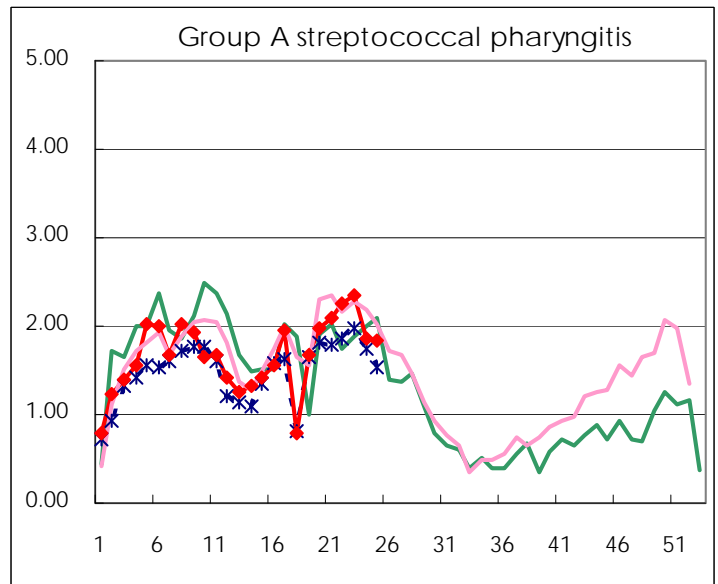
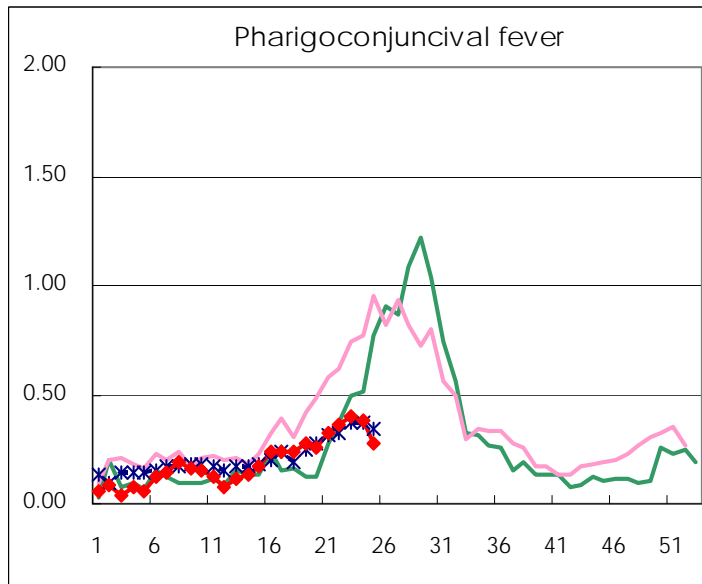
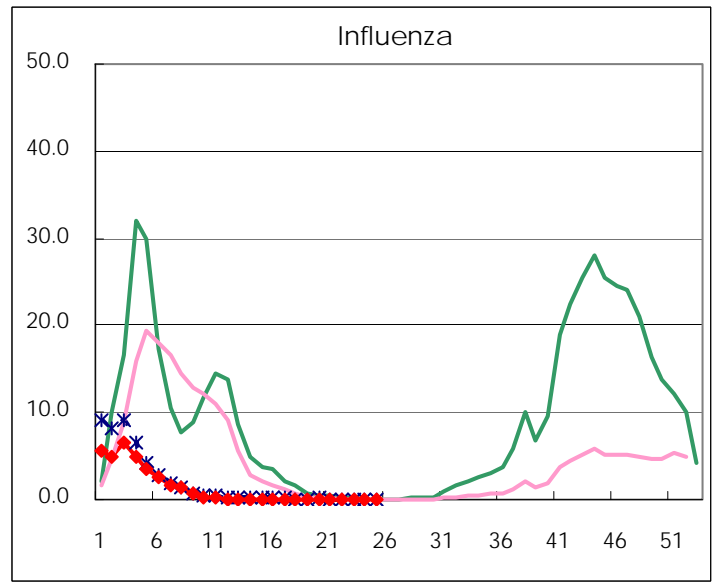
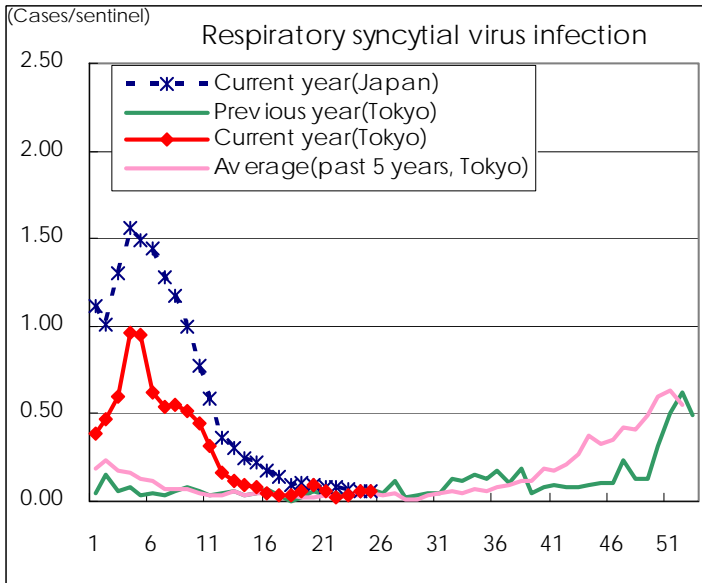
Category	Diseases	Tokyo					Japan	
		22nd	23rd	24th	25th	Cum 2010	25th	Cum 2010
V	Amebiasis	9	6	2	2	81	8	378
	Viral hepatitis(excluding hepatitis A and E)			2		22	3	96
	Acute encephalitis(excluding JE and WNE)				2	10	4	118
	Cryptosporidiosis					1		6
	Creutzfeldt-Jakob disease		2			9	2	73
	Severe invasive streptococcal infections(TSLS)		2		1	10	2	62
	Acquired immunodeficiency syndrome (AIDS)	9	7	9	10	227	11	678
	Giardiasis	1				8	1	41
	Meningococcal meningitis							4
	Congenital rubella syndrome							
	Syphilis	6	4	5	2	77	7	267
	Tetanus					2		45
	Vancomycin-resistant S. aureus infection							
	Vancomycin-resistant Enterococcus infection					8	1	48
	Rubella	1				10	1	51
Measles	2	4	3	2	43	10	263	
Novel Flu	Novel influenza (swine-origin influenza A/H1N1)	—	—	—	—		—	

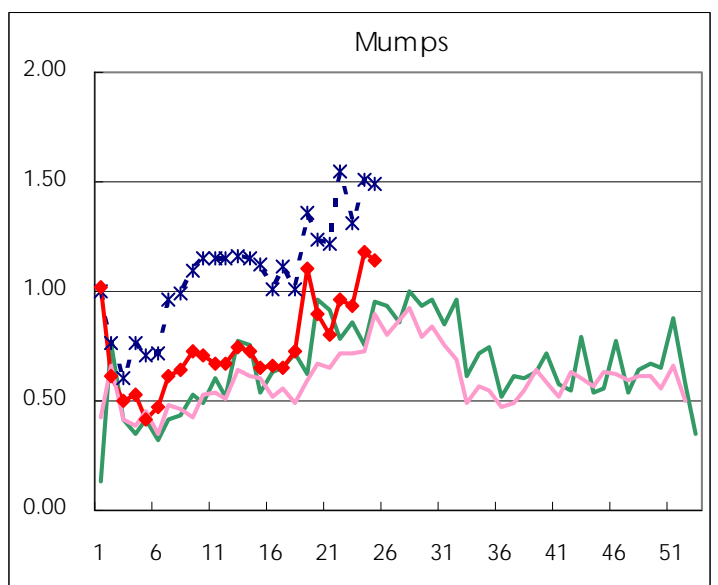
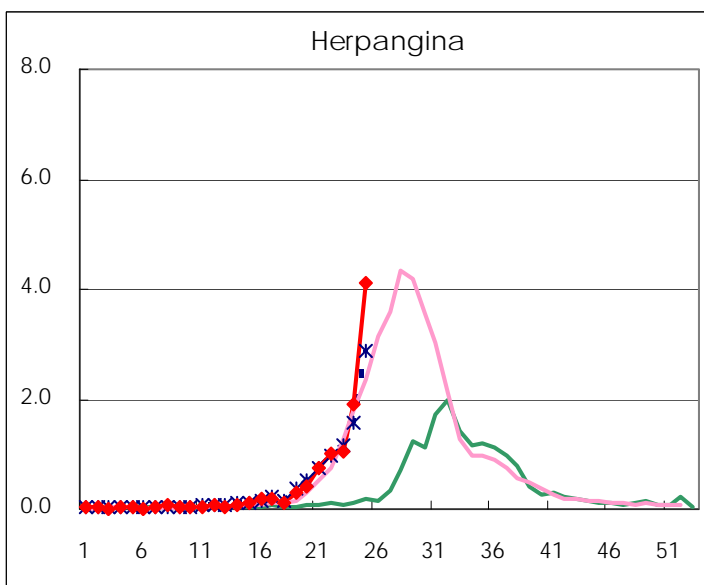
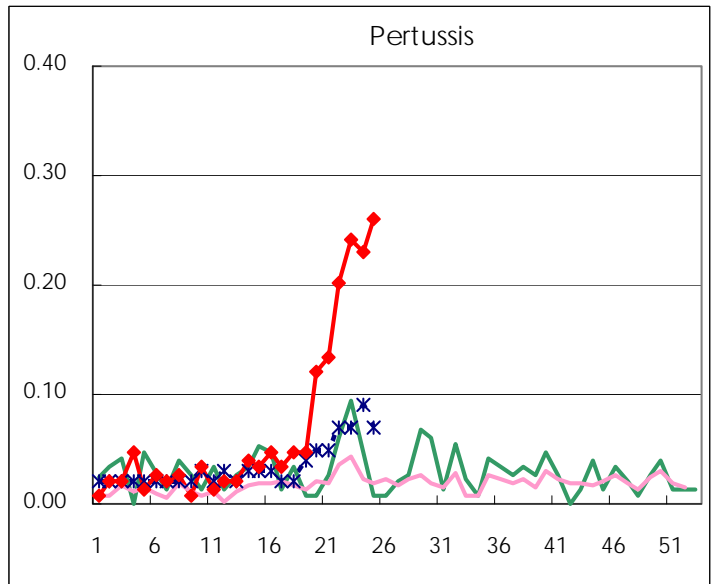
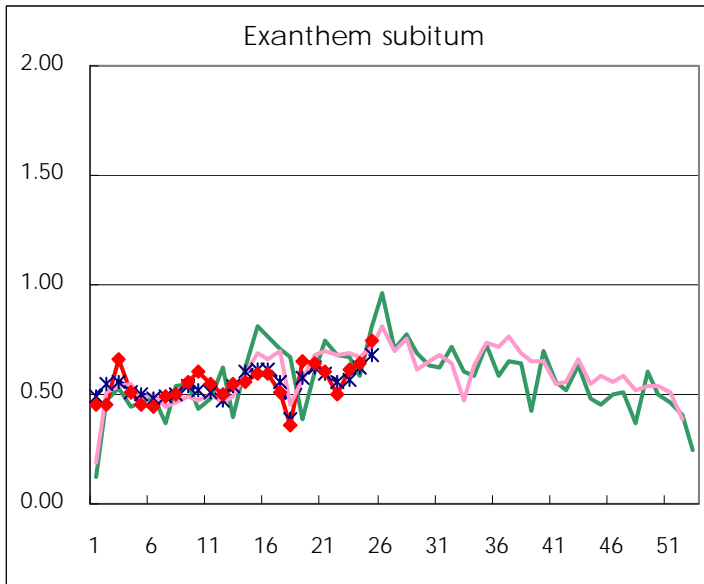
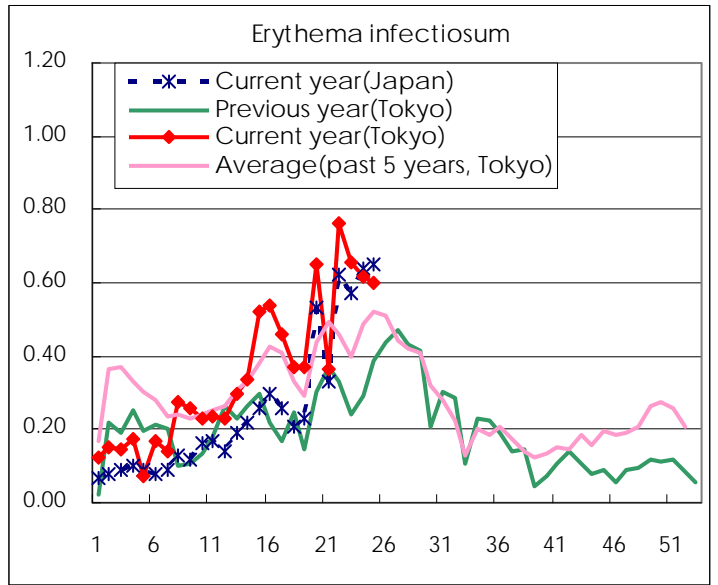
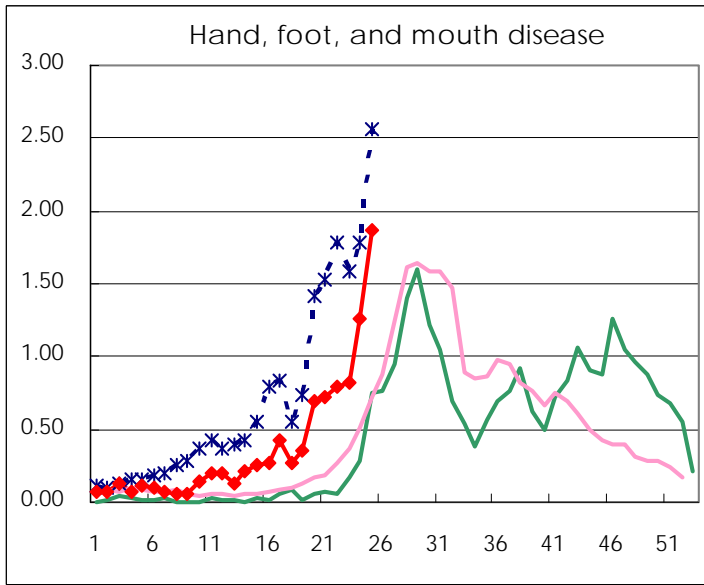
Number of patients with the diseases to be reported  
by the designated clinics and hospitals

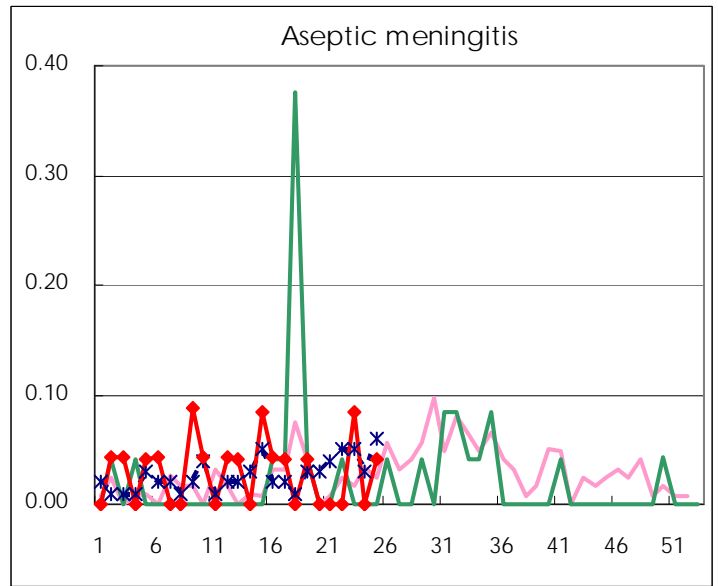
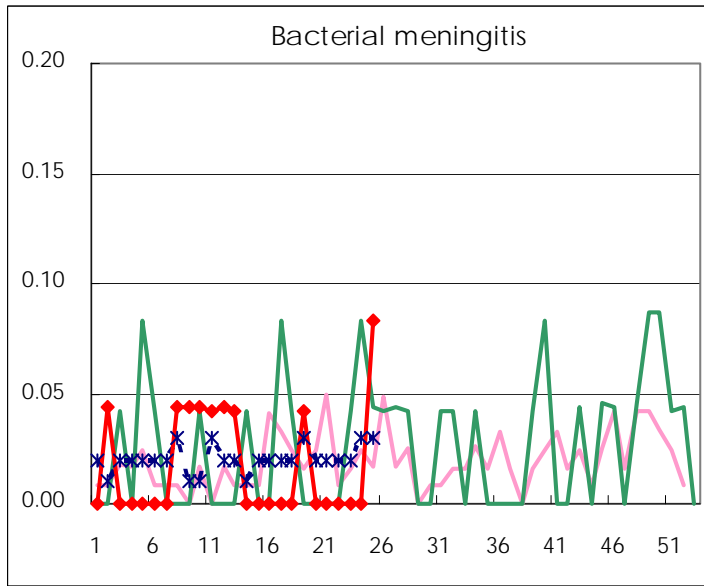
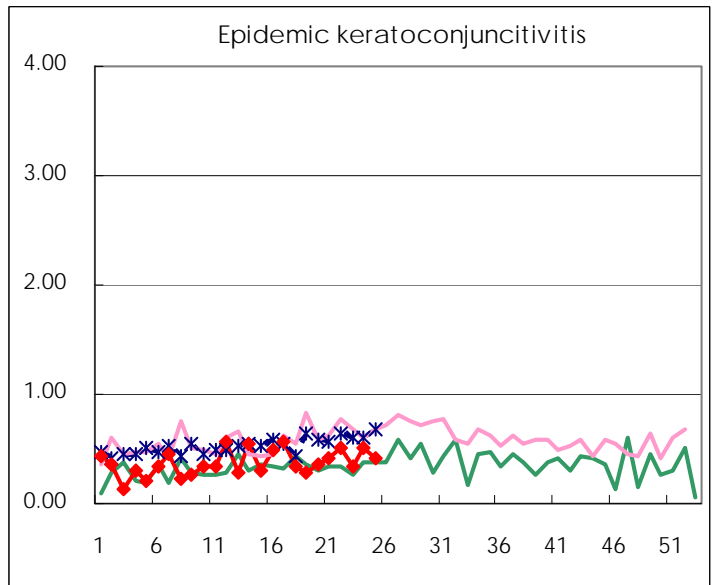
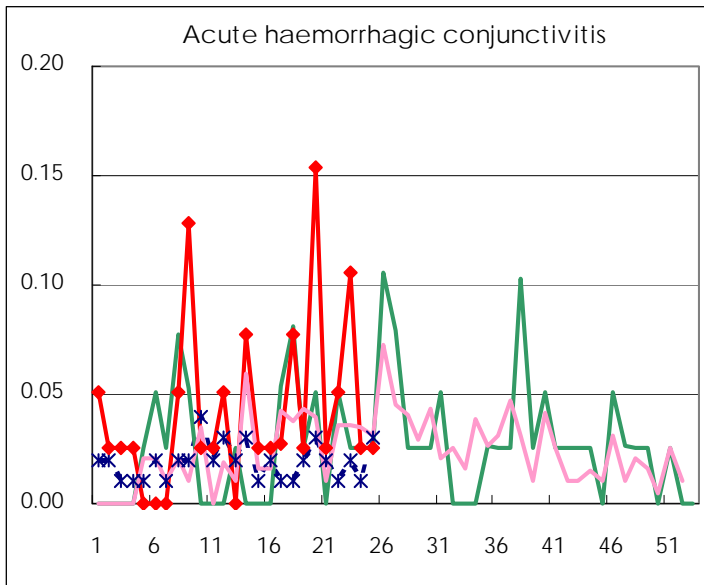
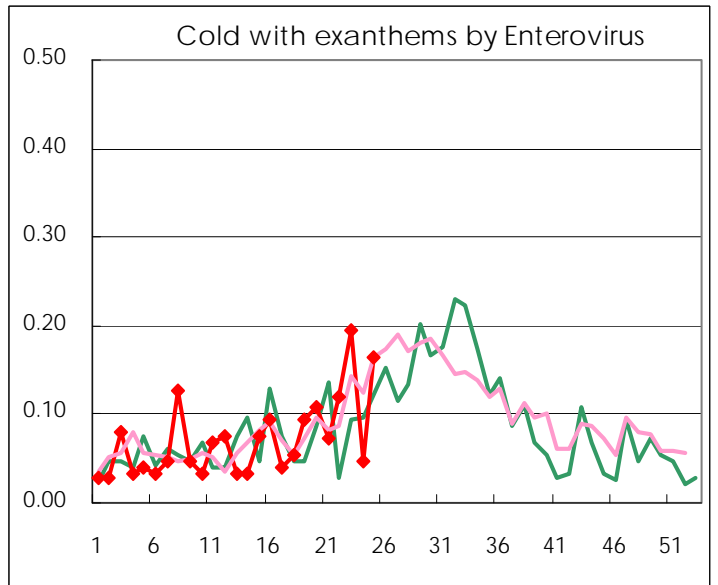
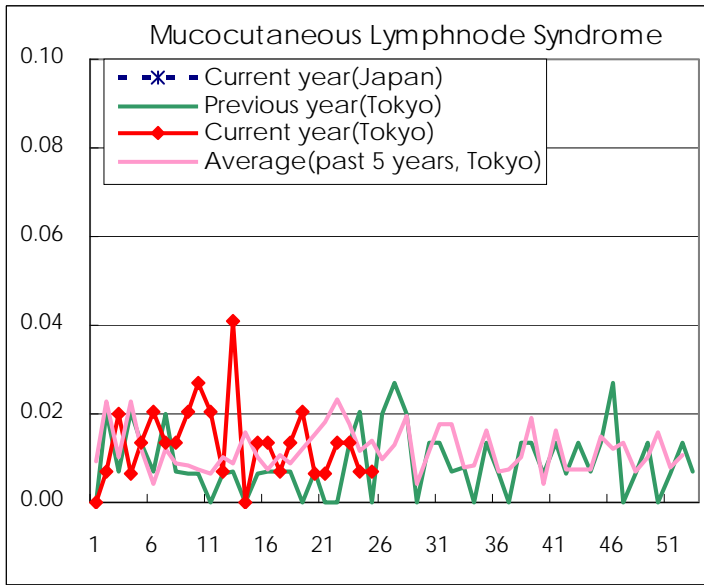
Diseases	2010				
	22nd	23rd	24th	25th	/sentinel
Respiratory syncytial virus infection	4	5	9	9	0.06
Pharyngoconjunctival fever	54	59	57	41	0.28
Group A streptococcal pharyngitis	335	351	274	269	1.84
Infectious gastroenteritis	1,092	1,077	910	706	4.84
Chickenpox	266	302	275	235	1.61
Hand, foot, and mouth disease	118	122	187	273	1.87
Erythema infectiosum	114	98	91	88	0.60
Exanthem subitum	74	91	95	109	0.75
Pertussis	30	36	34	38	0.26
Herpangina	150	158	281	602	4.12
Mumps	144	139	174	166	1.14
Cold with exanthems by Enterovirus	18	29	7	24	0.16
Mucocutaneous Lymphnode Syndrome	2	2	1	1	0.01
Influenza	24	13	15	7	0.02
Acute hemorrhagic conjunctivitis	2	4	1	1	0.03
Epidemic keratoconjunctivitis	20	13	20	16	0.41
Bacterial meningitis				2	0.08
Aseptic meningitis		2		1	0.04
Mycoplasma pneumonia	8	9	3	8	0.33
Chlamydial pneumonia (excluding psittacosis)			1		

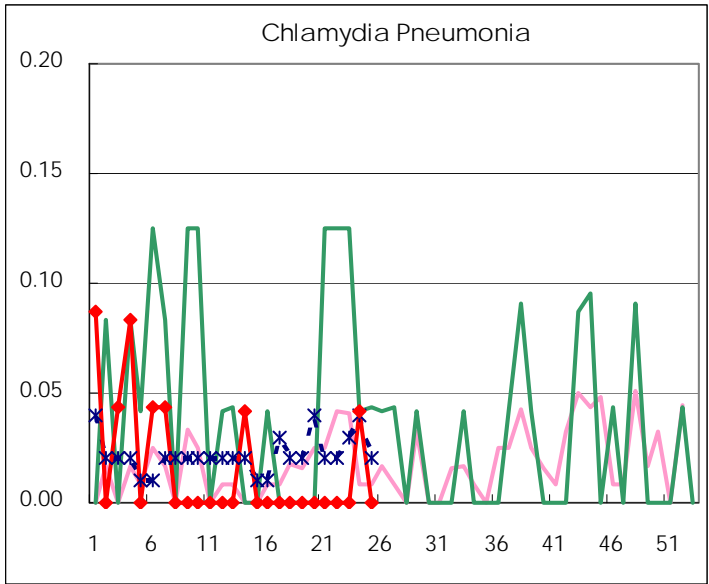
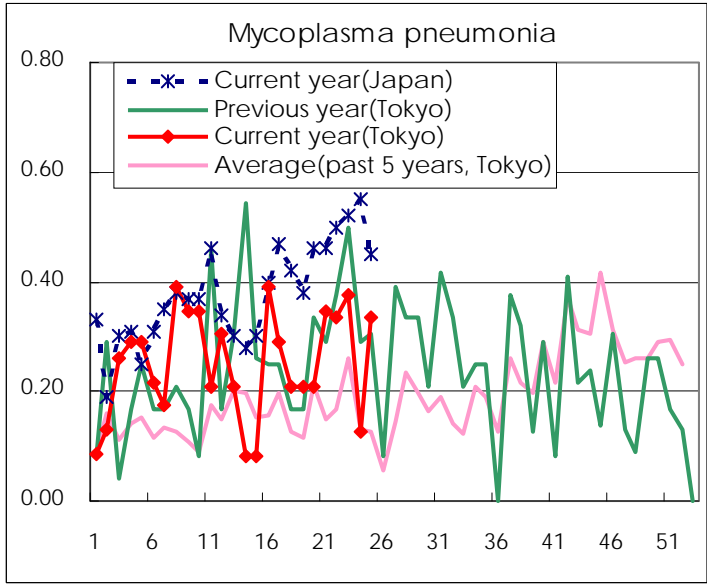
( Blank means 0. )

# Disease Trend Graph (weekly reported cases per sentinel in comparison)









Number of sentinel facilities for weekly reporting		
Types of sentinels	Number of sentinels	Sentinels having reported
Pediatric	150	146
Influenza	290	282
Ophthalmic	39	39
Specially-designated	25	24

Tokyo Metropolitan Government  
**Infectious Disease Surveillance Center**