
INFECTIOUS DISEASES WEEKLY REPORT

TOKYO IDWR

Tokyo Metropolitan Infectious Disease Surveillance Center

8 July 2010 / Number 26

Surveillance System in Tokyo, Japan

The infectious diseases which all physicians must report

All physicians must report to health centers the incidence of the diseases which are shown at page one. Health centers electronically report the individual cases to Tokyo Metropolitan Infectious Disease Surveillance Center.

The infectious diseases required to be reported by the sentinels

The numbers of patients who visit the sentinel clinics or hospitals during a week are reported to health centers in Tokyo. And they electronically report the numbers to Tokyo Metropolitan Infectious Disease Surveillance Center. We have about 400 sentinel clinics and hospitals in Tokyo.

1st Week is early January and 52nd Week is end of December.

Tokyo Metropolitan Institute of Public Health
Epidemiological Information Office

TEL:81-3-3363-3213 FAX:81-3-5332-7365

e-mail:idsc@tokyo-eiken.go.jp

URL:idsc.tokyo-eiken.go.jp/

Number of patients with the diseases which all physicians must report

Category	Diseases	Tokyo				Japan		
		23rd	24th	25th	26th	Cum 2010	26th	Cum 2010
I	Ebola hemorrhagic fever							
	Crimean-Congo hemorrhagic fever							
	Smallpox							
	South American hemorrhagic fever							
	Plague							
	Marburg disease							
	Lassa fever							
II	Acute poliomyelitis							1
	Tuberculosis	75	84	74	55	2047	357	12079
	Diphtheria							
	Severe Acute Respiratory Syndrome(SARS)							
	Avian influenza H5N1							
III	Cholera					1		4
	Shigellosis	1		1	1	35	2	88
	Enterohemorrhagic Escherichia coli infection	4	10	12	8	86	86	1138
	Typhoid fever			1		3		15
	Paratyphoid fever				1	3	2	14
IV	Hepatitis E					6	2	36
	West Nile fever							
	Hepatitis A					32		256
	Echinococcosis							5
	Yellow fever							
	Psittacosis							3
	Omsk hemorrhagic fever							
	Relapsing fever							
	Kyasanur forest disease							
	Q fever							
	Rabies							
	Coccidioidomycosis							
	Monkeypox							
	Hemorrhagic fever with renal syndrome							
	Western equine encephalitis							
	Tick-borne encephalitis							
	Anthrax							
	Scrub typhus(Tsutsugamushi disease)	1				5	3	102
	Dengue fever	2		2	2	19	3	62
	Eastern equine encephalitis							
	Avian influenza (excluding H5N1)							
	Nipah virus infection							
	Japanese spotted fever					1		25
	Japanese encephalitis							
	Epidemic typhus							
	Hantavirus pulmonary syndrome							
	Herpes B virus infection							
	Glanders							
	Brucellosis							2
	Venezuelan equine encephalitis							
	Hendra virus infection							
Botulism								
Malaria				2	11	2	30	
Tularemia								
Lyme disease					1		4	
Lyssavirus infection(excluding rabies)								
Rift valley fever								
Melioidosis					1		2	
Legionellosis			2	1	17	23	276	
Leptospirosis	1				2	1	5	
Rocky mountain spotted fever								

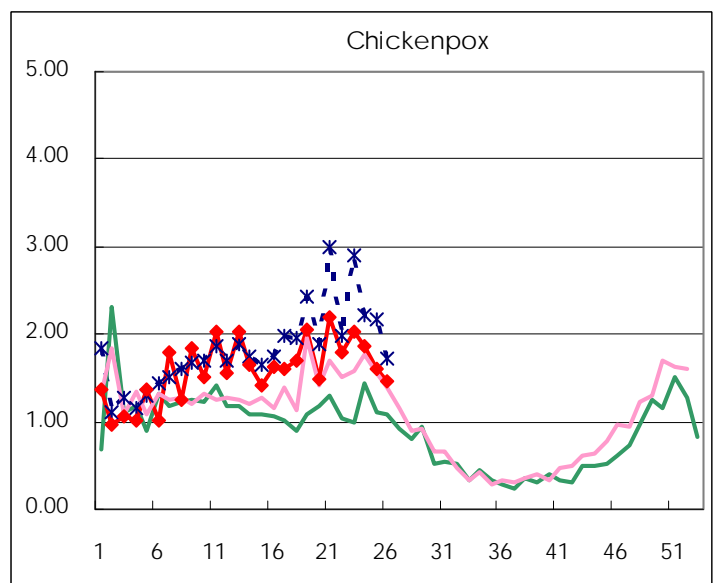
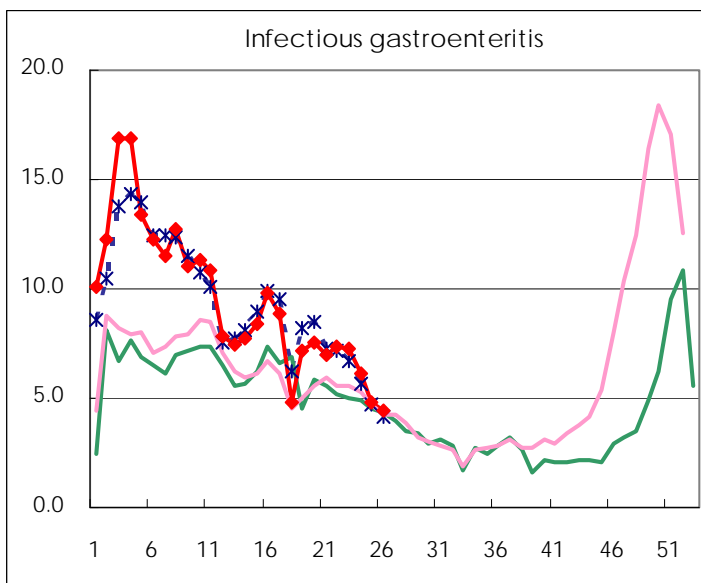
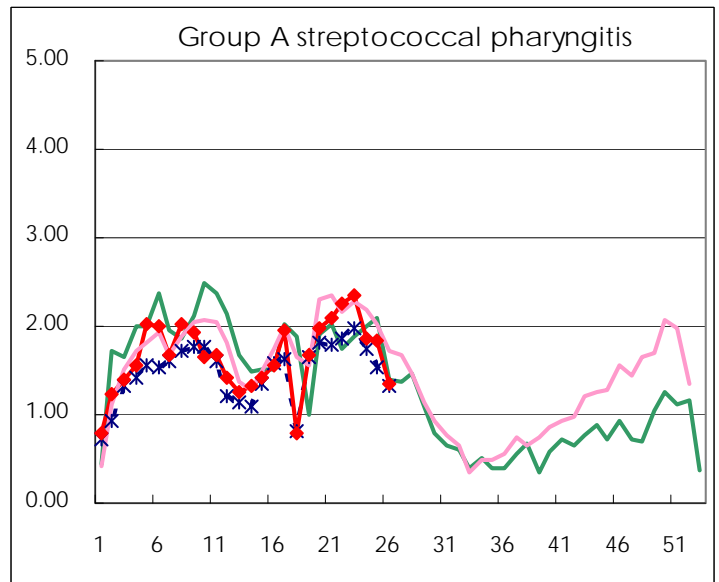
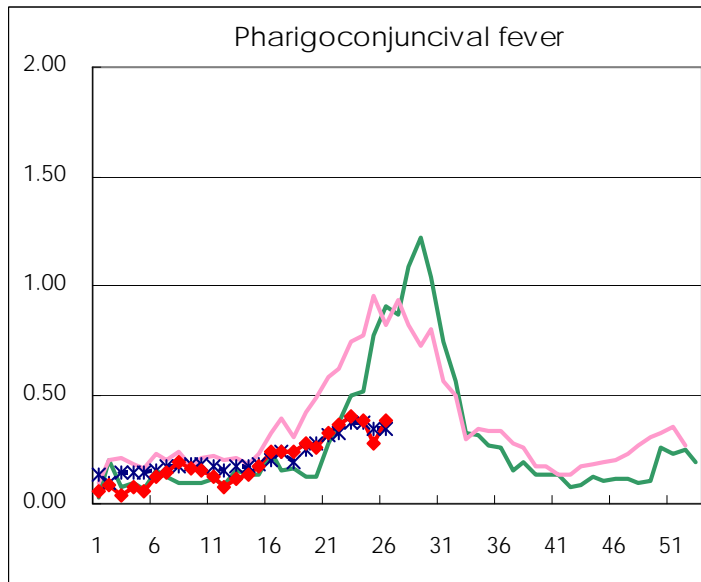
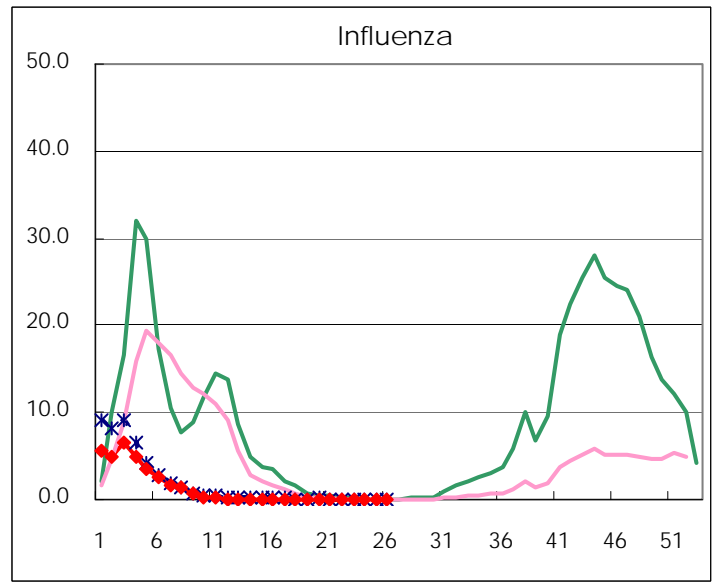
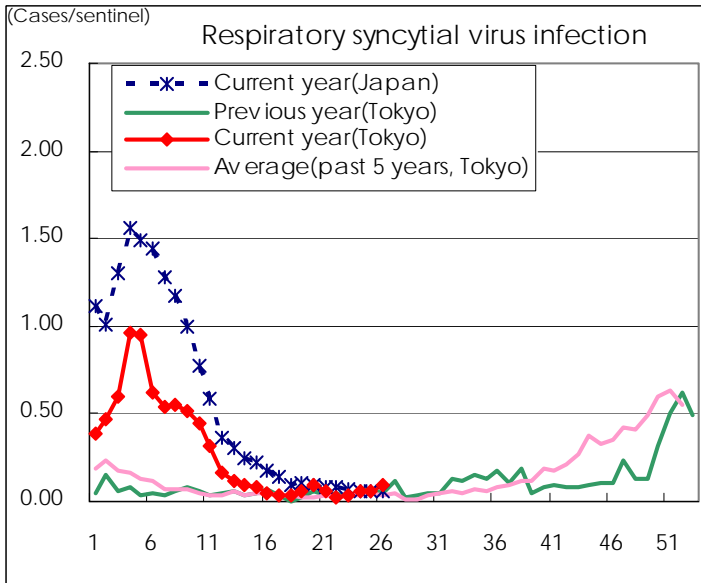
Category	Diseases	Tokyo				Japan		
		23rd	24th	25th	26th	Cum 2010	26th	Cum 2010
V	Amebiasis	6	2	2	1	82	10	397
	Viral hepatitis(excluding hepatitis A and E)		2		1	23		98
	Acute encephalitis(excluding JE and WNE)			2	2	12		122
	Cryptosporidiosis				1	2	3	9
	Creutzfeldt-Jakob disease	2			1	10	1	74
	Severe invasive streptococcal infections(TSLS)	2		1	1	11	1	64
	Acquired immunodeficiency syndrome (AIDS)	7	9	10	9	236	21	715
	Giardiasis					8	1	42
	Meningococcal meningitis							4
	Congenital rubella syndrome							
	Syphilis	4	5	2	5	82	8	287
	Tetanus					2	3	50
	Vancomycin-resistant S. aureus infection							
	Vancomycin-resistant Enterococcus infection				1	9	1	50
	Rubella					10	2	53
Measles	4	3	2	2	44	14	277	
Novel Flu	Novel influenza (swine-origin influenza A/H1N1)	—	—	—	—	—	—	—

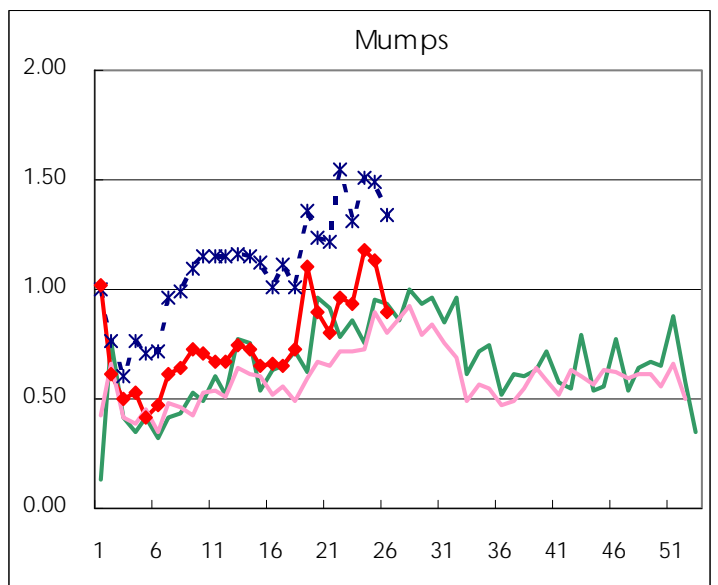
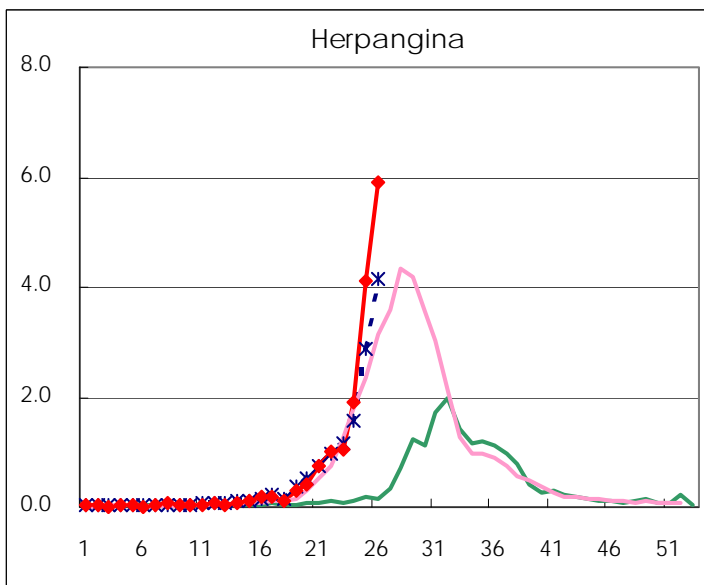
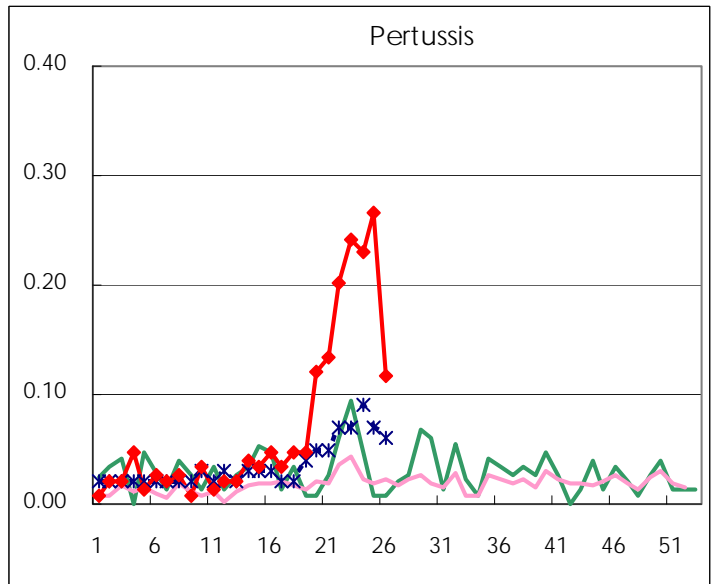
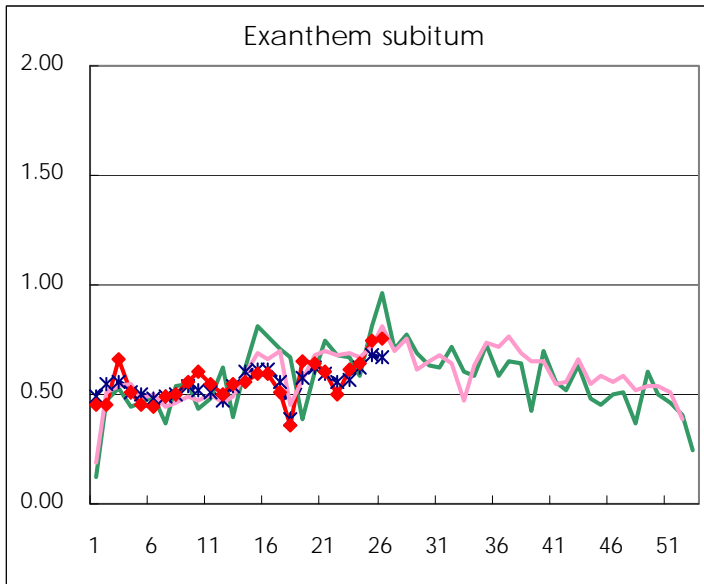
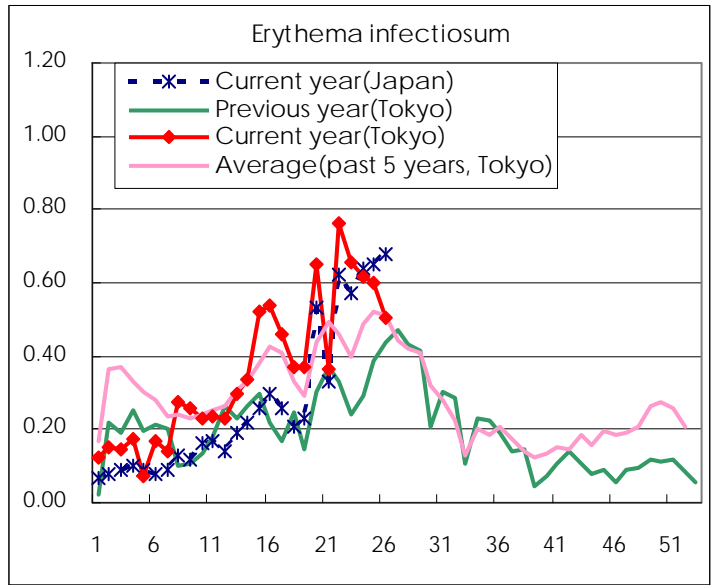
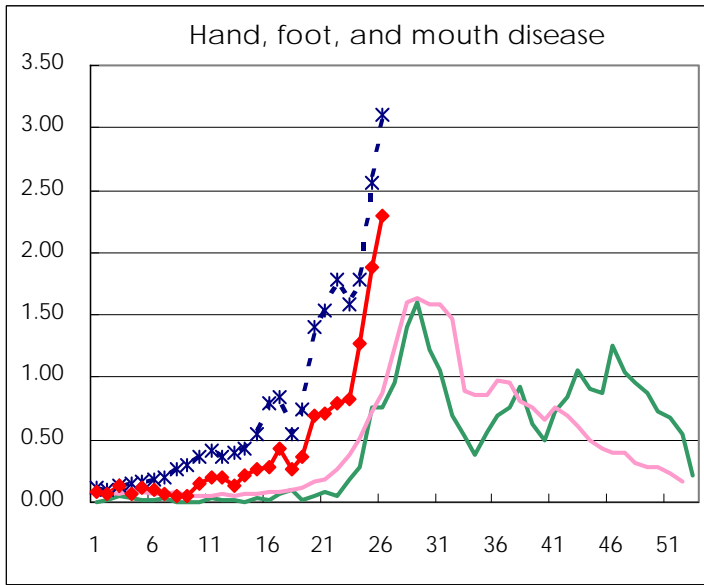
Number of patients with the diseases to be reported
by the designated clinics and hospitals

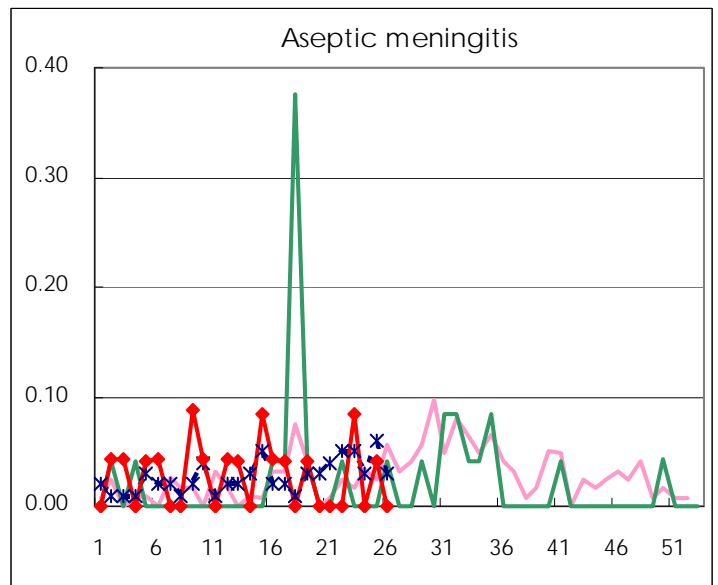
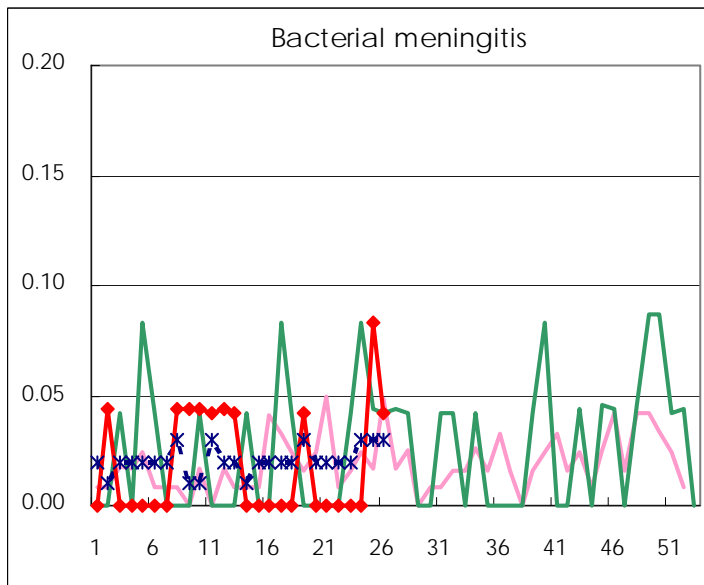
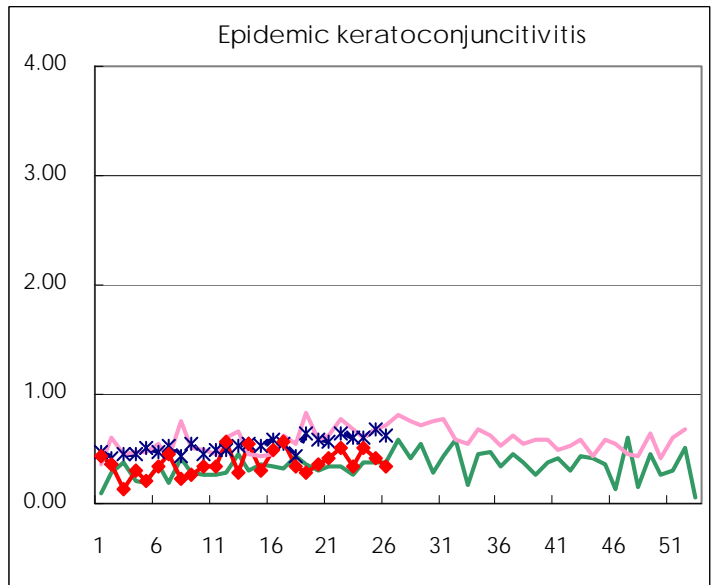
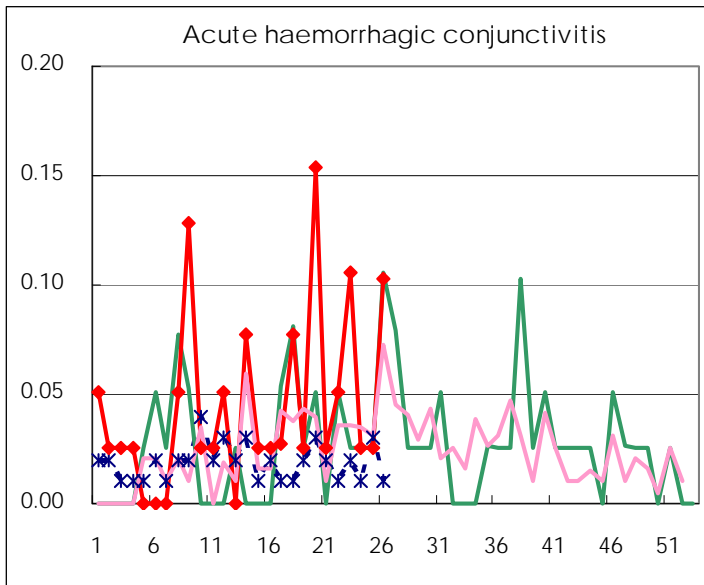
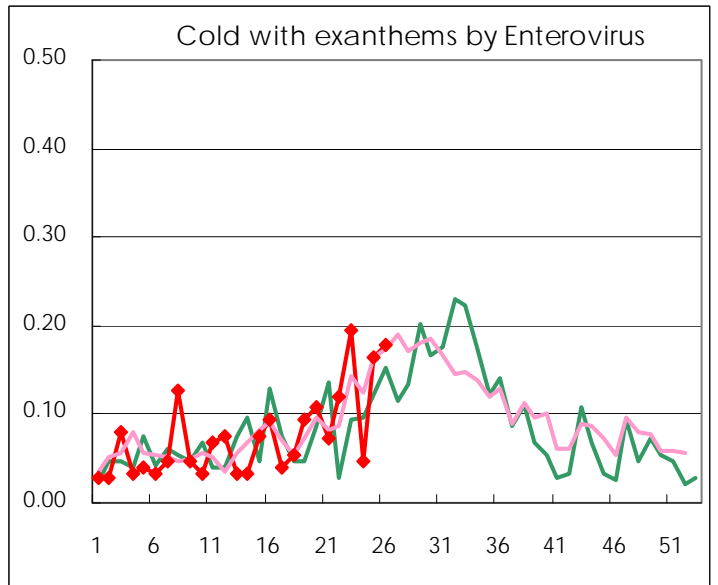
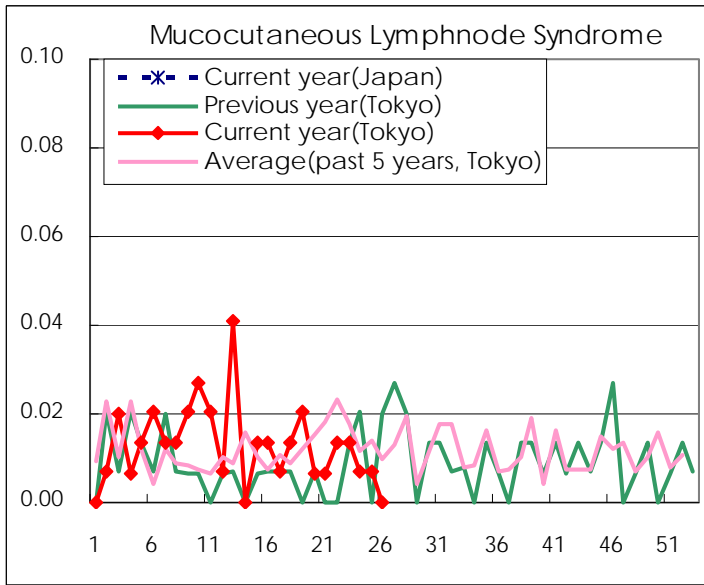
Diseases	2010				
	23rd	24th	25th	26th	/sentinel
Respiratory syncytial virus infection	5	9	9	14	0.10
Pharyngoconjunctival fever	59	57	41	56	0.38
Group A streptococcal pharyngitis	351	274	270	198	1.36
Infectious gastroenteritis	1077	910	706	643	4.40
Chickenpox	302	275	237	215	1.47
Hand, foot, and mouth disease	122	187	276	334	2.29
Erythema infectiosum	98	91	88	74	0.51
Exanthem subitum	91	95	110	110	0.75
Pertussis	36	34	39	17	0.12
Herpangina	158	281	602	863	5.91
Mumps	139	174	167	131	0.90
Cold with exanthems by Enterovirus	29	7	24	26	0.18
Mucocutaneous Lymphnode Syndrome	2	1	1		
Influenza	13	15	7	6	0.02
Acute hemorrhagic conjunctivitis	4	1	1	4	0.10
Epidemic keratoconjunctivitis	13	20	16	13	0.33
Bacterial meningitis			2	1	0.04
Aseptic meningitis	2		1		
Mycoplasma pneumonia	9	3	8	7	0.29
Chlamydial pneumonia (excluding psittacosis)		1		1	0.04

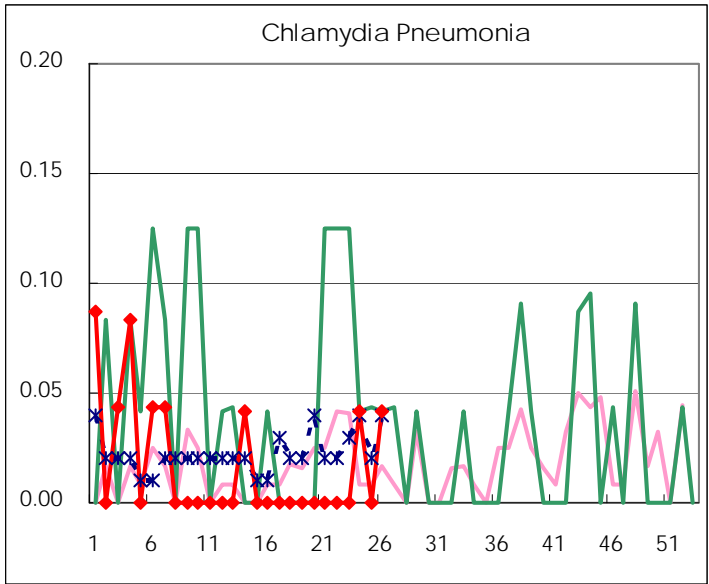
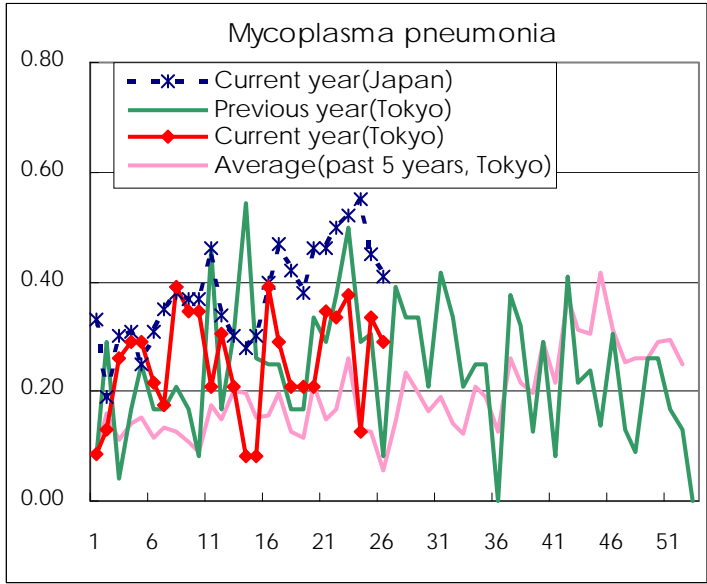
(Blank means 0.)

Disease Trend Graph (weekly reported cases per sentinel in comparison)









Number of sentinel facilities for weekly reporting		
Types of sentinels	Number of sentinels	Sentinels having reported
Pediatric	150	146
Influenza	290	284
Ophthalmic	39	39
Specially-designated	25	24

Tokyo Metropolitan Government
Infectious Disease Surveillance Center