

---

INFECTIOUS DISEASES WEEKLY REPORT

# TOKYO IDWR

Tokyo Metropolitan Infectious Disease Surveillance Center

## 22 July 2010 / Number 28

### Surveillance System in Tokyo, Japan

The infectious diseases which all physicians must report

All physicians must report to health centers the incidence of the diseases which are shown at page one. Health centers electronically report the individual cases to Tokyo Metropolitan Infectious Disease Surveillance Center.

The infectious diseases required to be reported by the sentinels

The numbers of patients who visit the sentinel clinics or hospitals during a week are reported to health centers in Tokyo. And they electronically report the numbers to Tokyo Metropolitan Infectious Disease Surveillance Center. We have about 400 sentinel clinics and hospitals in Tokyo.

1st Week is early January and 52nd Week is end of December.

Tokyo Metropolitan Institute of Public Health  
Epidemiological Information Office

TEL:81-3-3363-3213 FAX:81-3-5332-7365

e-mail:[idsc@tokyo-eiken.go.jp](mailto:idsc@tokyo-eiken.go.jp)

URL:[idsc.tokyo-eiken.go.jp/](http://idsc.tokyo-eiken.go.jp/)

---

## Number of patients with the diseases which all physicians must report

Category	Diseases	Tokyo				Japan	
		25th	26th	27th	28th	Cum 2010	Cum 2010
I	Ebola hemorrhagic fever						
	Crimean-Congo hemorrhagic fever						
	Smallpox						
	South American hemorrhagic fever						
	Plague						
	Marburg disease						
	Lassa fever						
II	Acute poliomyelitis						1
	Tuberculosis	86	66	87	43	2208	13163
	Diphtheria						
	Severe Acute Respiratory Syndrome(SARS)						
	Avian influenza H5N1						
III	Cholera					1	4
	Shigellosis	1	1	4		39	93
	Enterohemorrhagic Escherichia coli infection	12	9	12	21	120	1438
	Typhoid fever	1		1		4	16
	Paratyphoid fever		1			3	14
IV	Hepatitis E					6	37
	West Nile fever						
	Hepatitis A			1		33	268
	Echinococcosis						5
	Yellow fever						
	Psittacosis						1
	Omsk hemorrhagic fever						
	Relapsing fever						
	Kyasanur forest disease						
	Q fever						
	Rabies						
	Coccidioidomycosis						
	Monkeypox						
	Hemorrhagic fever with renal syndrome						
	Western equine encephalitis						
	Tick-borne encephalitis						
	Anthrax						
	Scrub typhus(Tsutsugamushi disease)					5	108
	Dengue fever	2	2		2	21	67
	Eastern equine encephalitis						
	Avian influenza (excluding H5N1)						
	Nipah virus infection						
	Japanese spotted fever					1	27
	Japanese encephalitis						
	Epidemic typhus						
	Hantavirus pulmonary syndrome						
	Herpes B virus infection						
	Glanders						
	Brucellosis						2
	Venezuelan equine encephalitis						
	Hendra virus infection						
	Botulism						
Malaria		2	1	1	13	33	
Tularemia							
Lyme disease					1	5	
Lyssavirus infection(excluding rabies)							
Rift valley fever							
Melioidosis					1	2	
Legionellosis	2	1	1		18	319	
Leptospirosis					2	5	
Rocky mountain spotted fever							

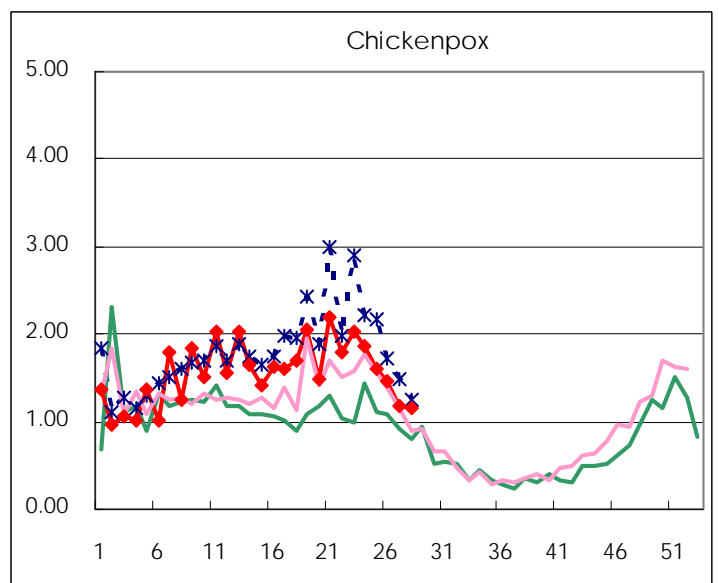
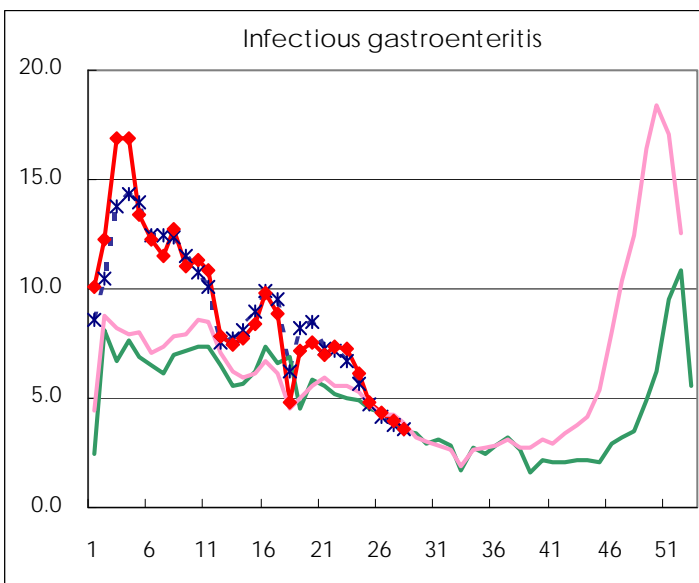
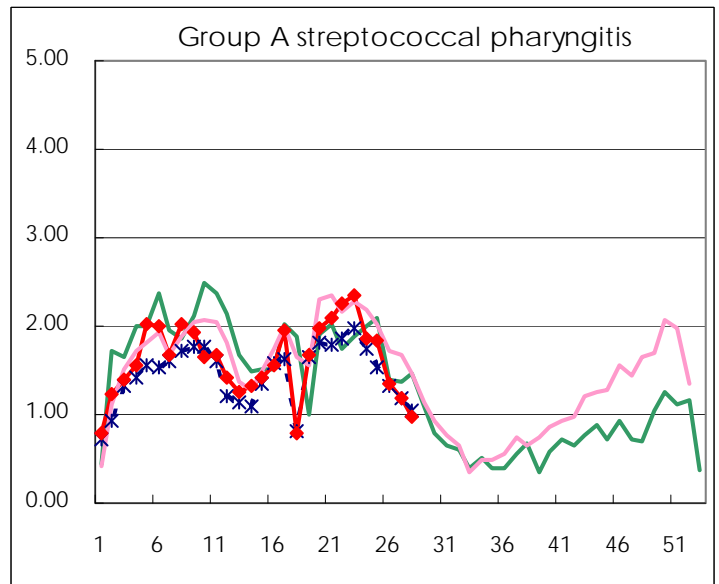
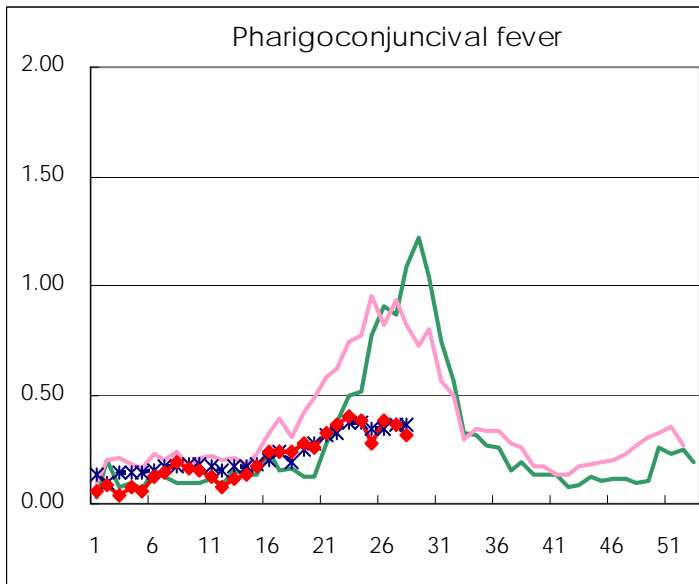
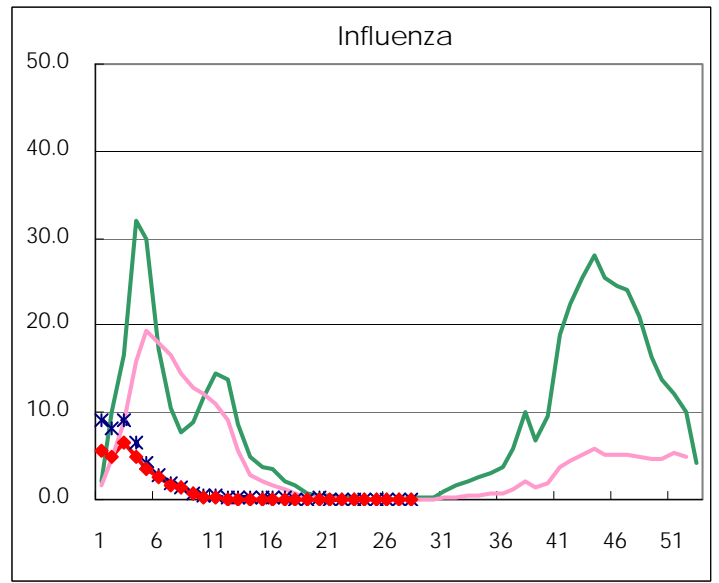
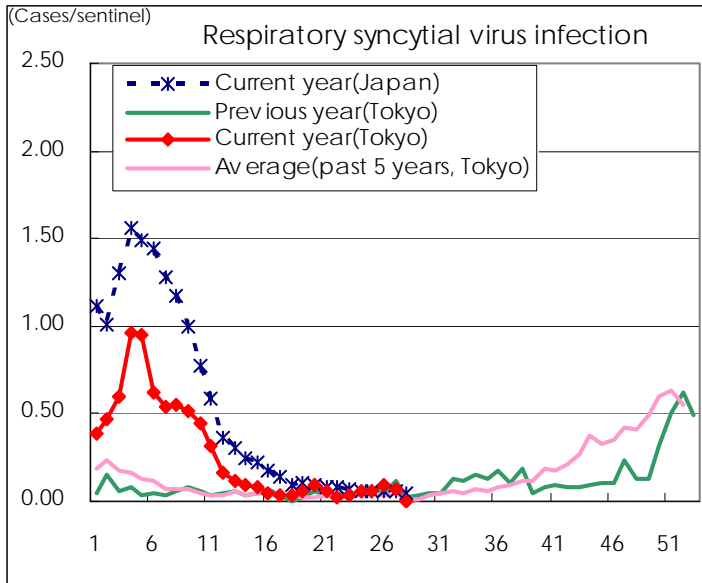
Category	Diseases	Tokyo				Japan		
		25th	26th	27th	28th	Cum 2010	28th	Cum 2010
V	Amebiasis	2	1	4	2	88	11	431
	Viral hepatitis(excluding hepatitis A and E)		1	1		24	3	108
	Acute encephalitis(excluding JE and WNE)	2	2			12	2	136
	Cryptosporidiosis		1			2		9
	Creutzfeldt-Jakob disease		1			10		82
	Severe invasive streptococcal infections(TSLs)	1	1		1	12	3	71
	Acquired immunodeficiency syndrome (AIDS)	11	10	14	7	259	12	779
	Giardiasis					8	1	46
	Meningococcal meningitis							4
	Congenital rubella syndrome							
	Syphilis	2	5	2	6	90	12	323
	Tetanus					2	2	53
	Vancomycin-resistant S. aureus infection							
	Vancomycin-resistant Enterococcus infection		1			9	2	56
	Rubella					10	2	58
Measles	2	3	6	1	52	14	314	
Novel Flu	Novel influenza (swine-origin influenza A/H1N1)	—	—	—	—		—	

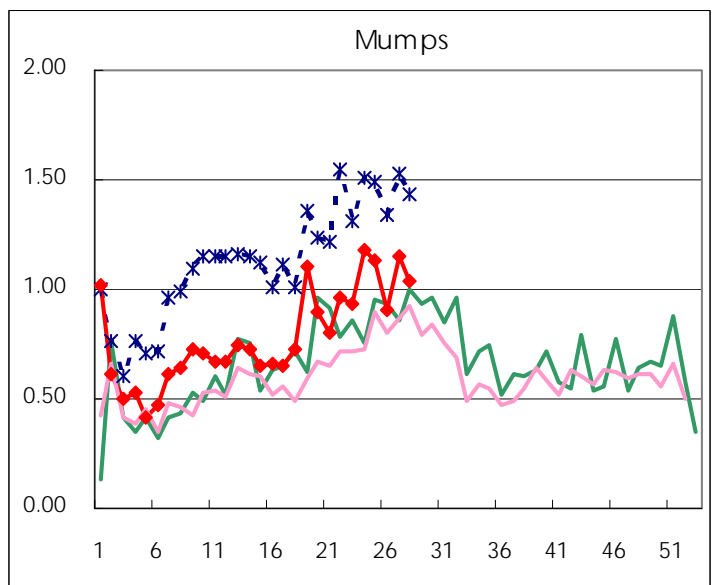
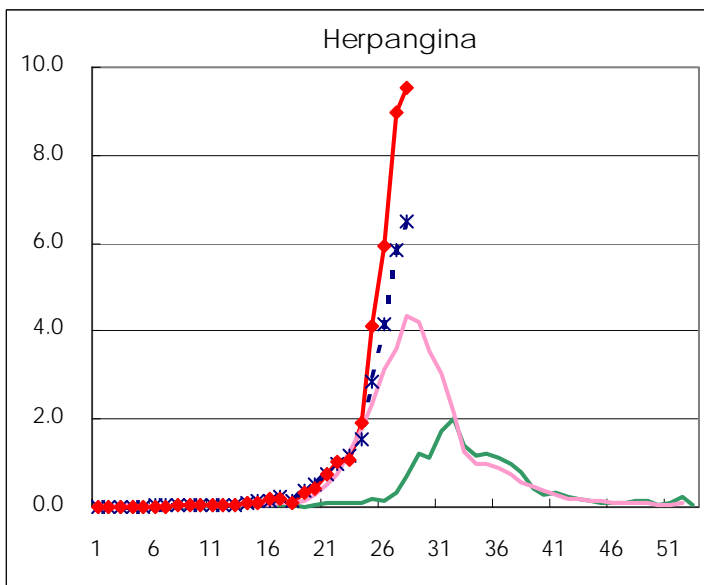
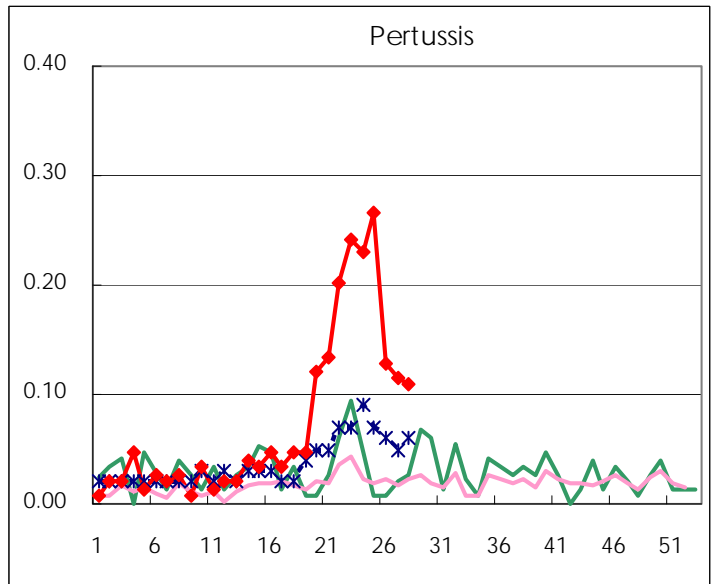
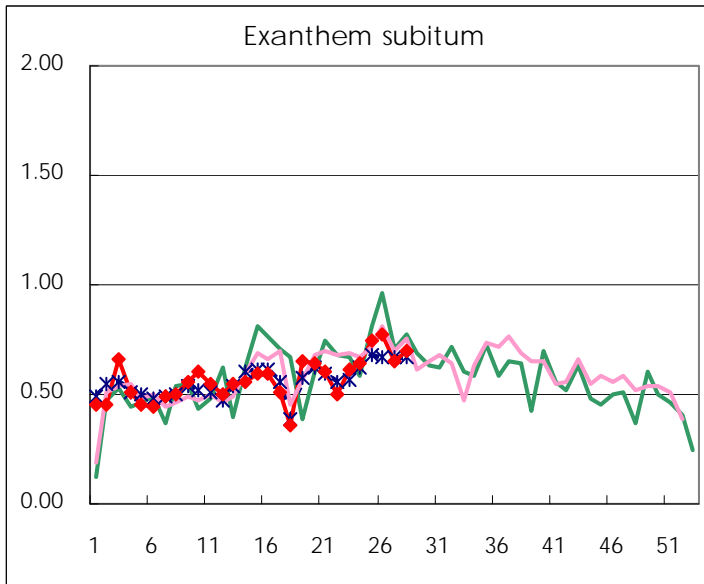
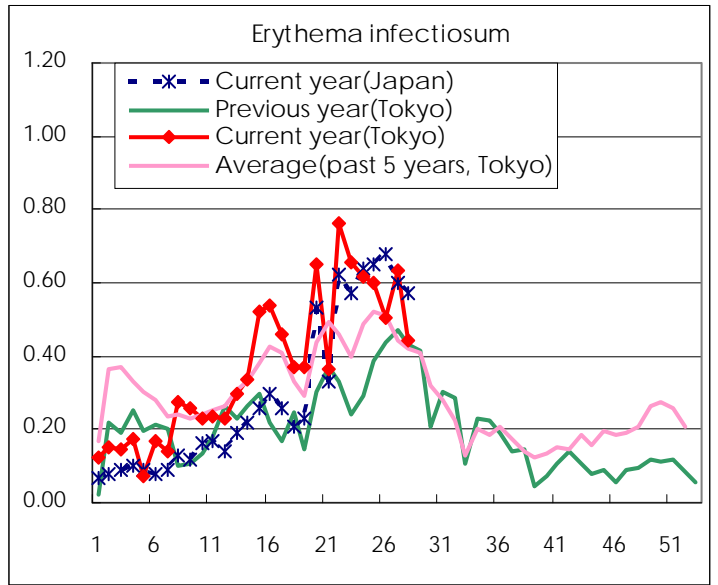
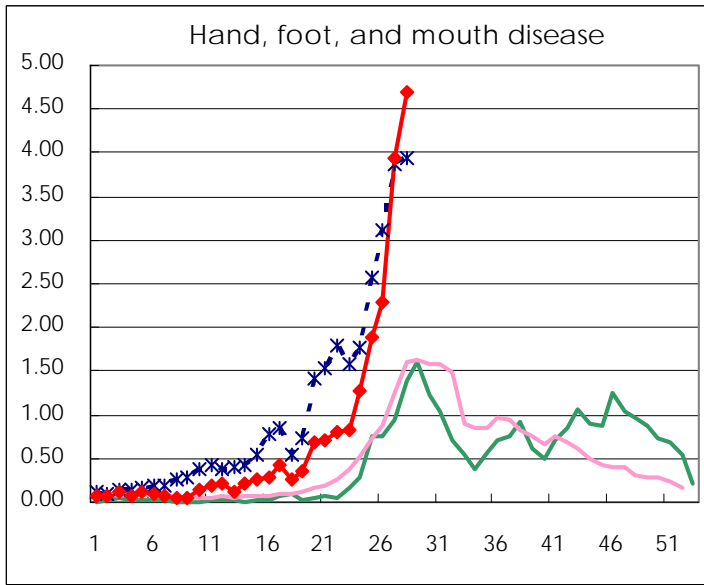
Number of patients with the diseases to be reported  
by the designated clinics and hospitals

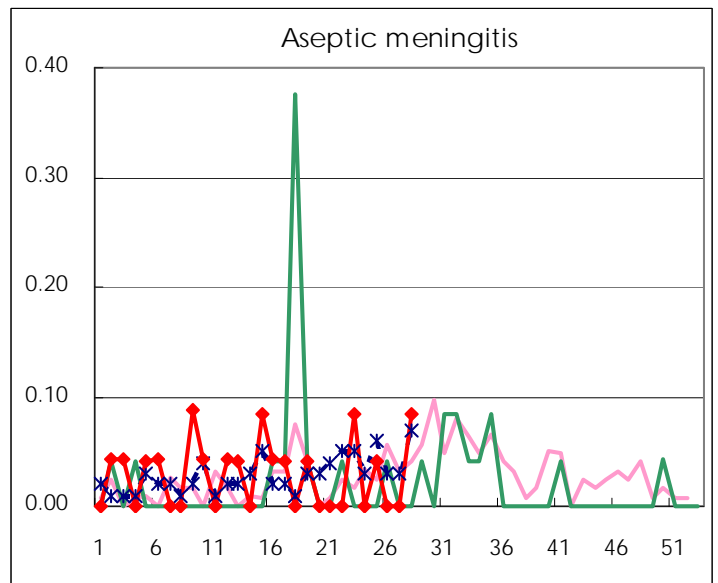
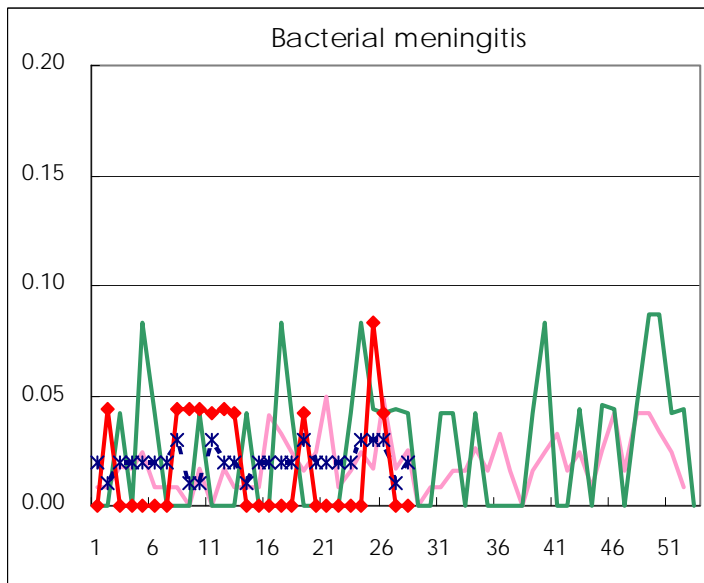
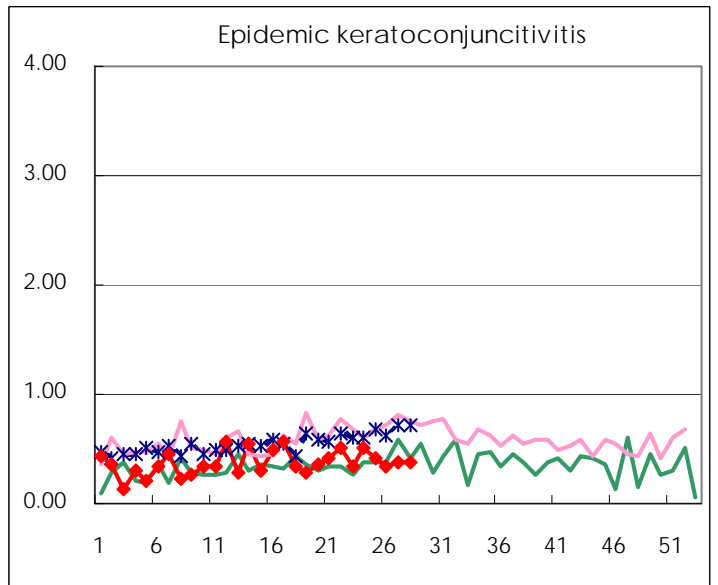
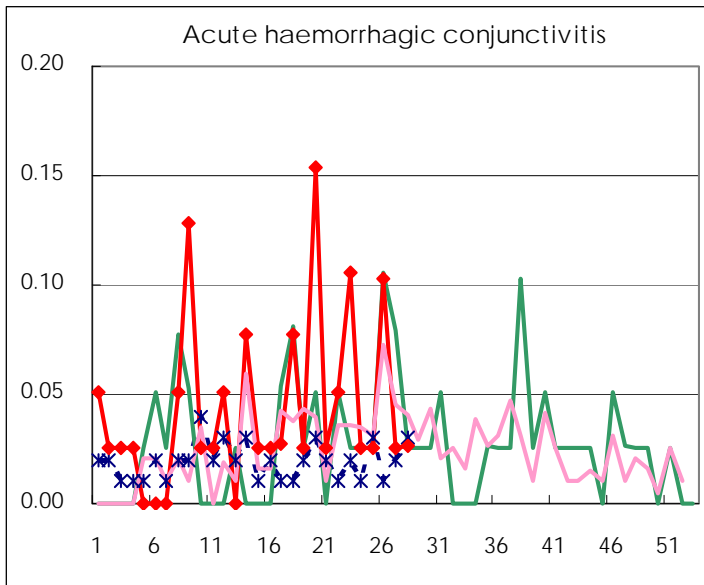
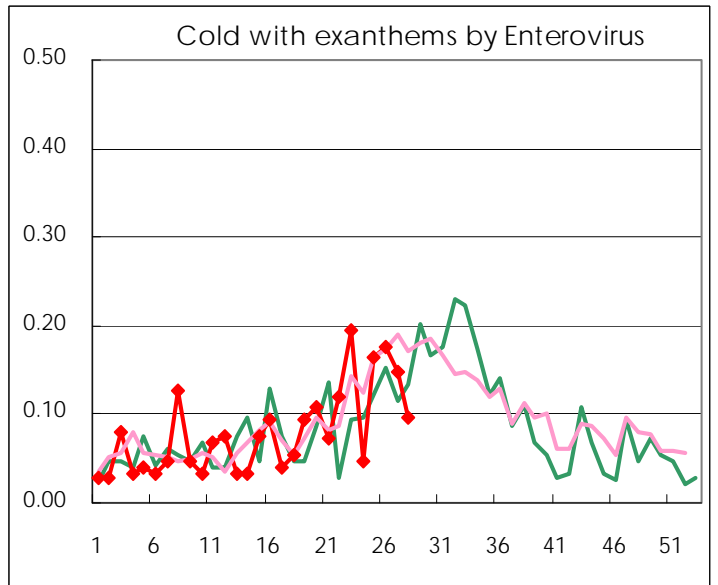
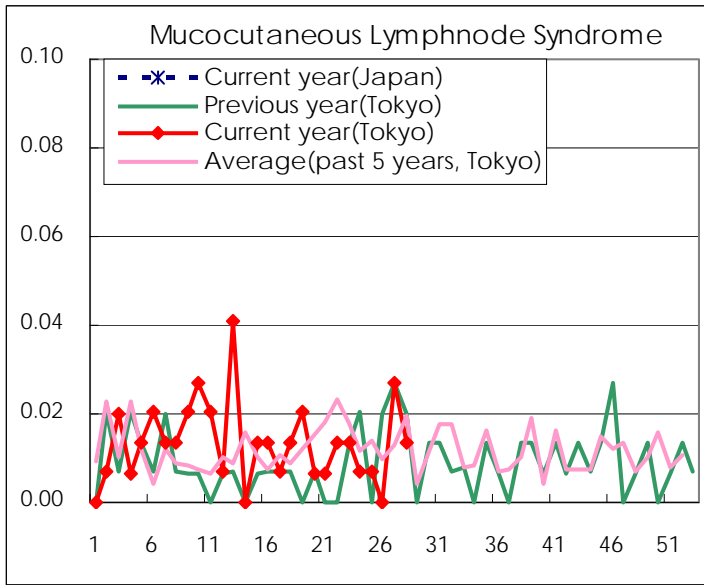
Diseases	2010				
	25th	26th	27th	28th	/sentinel
Respiratory syncytial virus infection	9	14	10		
Pharyngoconjunctival fever	41	56	53	46	0.31
Group A streptococcal pharyngitis	270	201	176	145	0.99
Infectious gastroenteritis	706	643	587	527	3.59
Chickenpox	237	217	173	170	1.16
Hand, foot, and mouth disease	276	340	584	690	4.69
Erythema infectiosum	88	75	94	65	0.44
Exanthem subitum	110	114	96	103	0.70
Pertussis	39	19	17	16	0.11
Herpangina	602	875	1,325	1,398	9.51
Mumps	167	134	170	153	1.04
Cold with exanthems by Enterovirus	24	26	22	14	0.10
Mucocutaneous Lymphnode Syndrome	1		4	2	0.01
Influenza	7	6	18	14	0.05
Acute hemorrhagic conjunctivitis	1	4	1	1	0.03
Epidemic keratoconjunctivitis	16	13	15	14	0.37
Bacterial meningitis	2	1			
Aseptic meningitis	1			2	0.08
Mycoplasma pneumonia	8	7	5	3	0.13
Chlamydial pneumonia (excluding psittacosis)		1			

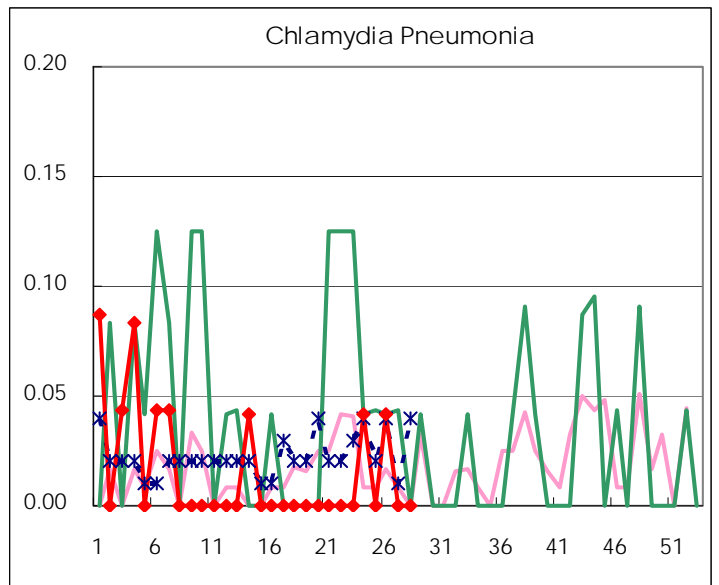
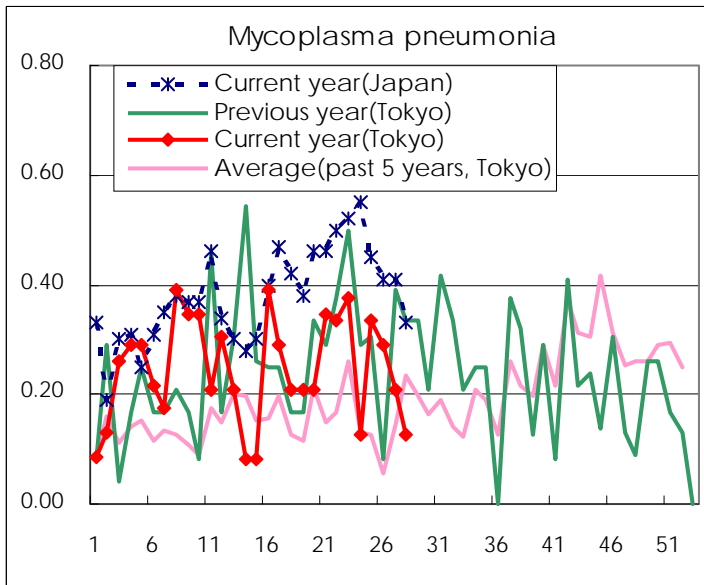
( Blank means 0. )

# Disease Trend Graph (weekly reported cases per sentinel in comparison)









Number of sentinel facilities for weekly reporting		
Types of sentinels	Number of sentinels	Sentinels having reported
Pediatric	150	147
Influenza	290	283
Ophthalmic	39	38
Specially-designated	25	24

Tokyo Metropolitan Government  
**Infectious Disease Surveillance Center**