
INFECTIOUS DISEASES WEEKLY REPORT

TOKYO IDWR

Tokyo Metropolitan Infectious Disease Surveillance Center

29 July 2010 / Number 29

Surveillance System in Tokyo, Japan

The infectious diseases which all physicians must report

All physicians must report to health centers the incidence of the diseases which are shown at page one. Health centers electronically report the individual cases to Tokyo Metropolitan Infectious Disease Surveillance Center.

The infectious diseases required to be reported by the sentinels

The numbers of patients who visit the sentinel clinics or hospitals during a week are reported to health centers in Tokyo. And they electronically report the numbers to Tokyo Metropolitan Infectious Disease Surveillance Center. We have about 400 sentinel clinics and hospitals in Tokyo.

1st Week is early January and 52nd Week is end of December.

Tokyo Metropolitan Institute of Public Health
Epidemiological Information Office

TEL:81-3-3363-3213 FAX:81-3-5332-7365

e-mail:idsc@tokyo-eiken.go.jp

URL:idsc.tokyo-eiken.go.jp/

Number of patients with the diseases which all physicians must report

Category	Diseases	Tokyo				Japan		
		26th	27th	28th	29th	Cum 2010	29th	Cum 2010
I	Ebola hemorrhagic fever							
	Crimean-Congo hemorrhagic fever							
	Smallpox							
	South American hemorrhagic fever							
	Plague							
	Marburg disease							
	Lassa fever							
II	Acute poliomyelitis							1
	Tuberculosis	68	88	49	49	2267	245	13625
	Diphtheria							
	Severe Acute Respiratory Syndrome(SARS)							
	Avian influenza H5N1							
III	Cholera					1		4
	Shigellosis	1	4			39	2	96
	Enterohemorrhagic Escherichia coli infection	9	12	22	10	131	97	1562
	Typhoid fever		1			4	1	17
	Paratyphoid fever	1				3		14
IV	Hepatitis E					6		38
	West Nile fever							
	Hepatitis A		1		1	34	4	273
	Echinococcosis							5
	Yellow fever							
	Psittacosis							7
	Omsk hemorrhagic fever							
	Relapsing fever							
	Kyasanur forest disease							
	Q fever							
	Rabies							
	Coccidioidomycosis							
	Monkeypox							
	Hemorrhagic fever with renal syndrome							
	Western equine encephalitis							
	Tick-borne encephalitis							
	Anthrax							
	Scrub typhus(Tsutsugamushi disease)					5		108
	Dengue fever	2		2		21	4	73
	Eastern equine encephalitis							
	Avian influenza (excluding H5N1)							
	Nipah virus infection							
	Japanese spotted fever					1	2	29
	Japanese encephalitis							
	Epidemic typhus							
	Hantavirus pulmonary syndrome							
	Herpes B virus infection							
	Glanders							
	Brucellosis							2
	Venezuelan equine encephalitis							
	Hendra virus infection							
Botulism								
Malaria	2	1	1		13	2	34	
Tularemia								
Lyme disease					1		5	
Lyssavirus infection(excluding rabies)								
Rift valley fever								
Melioidosis					1		2	
Legionellosis	1	1		3	21	27	352	
Leptospirosis					2		5	
Rocky mountain spotted fever								

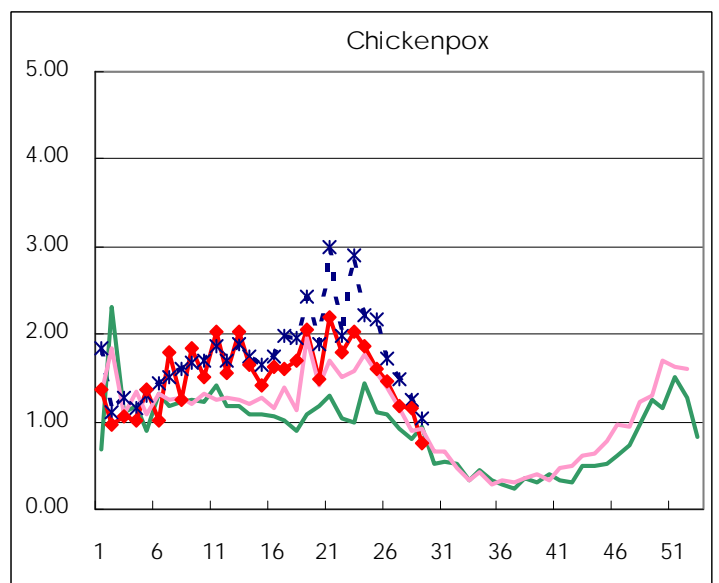
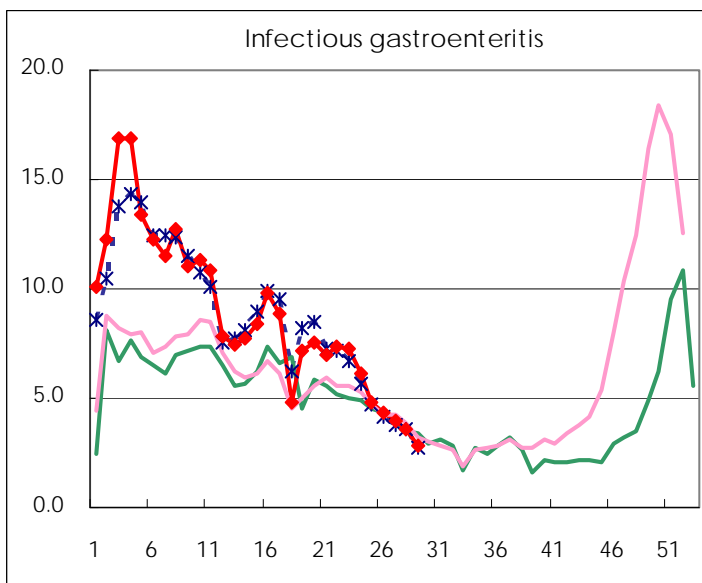
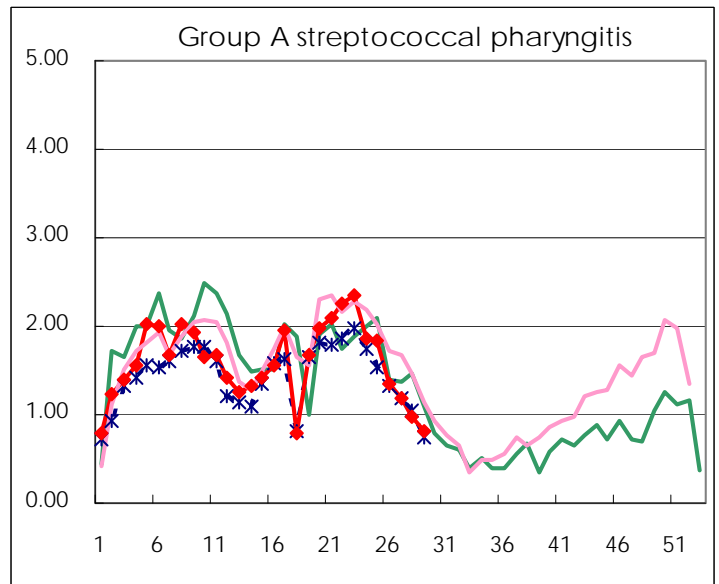
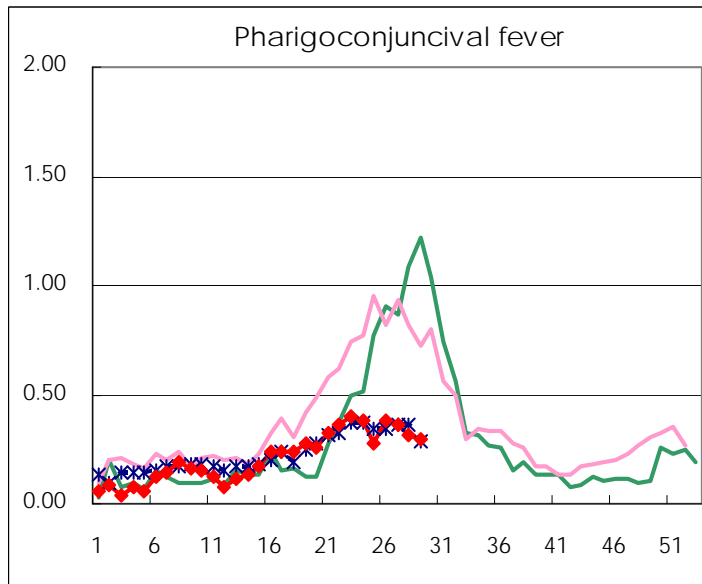
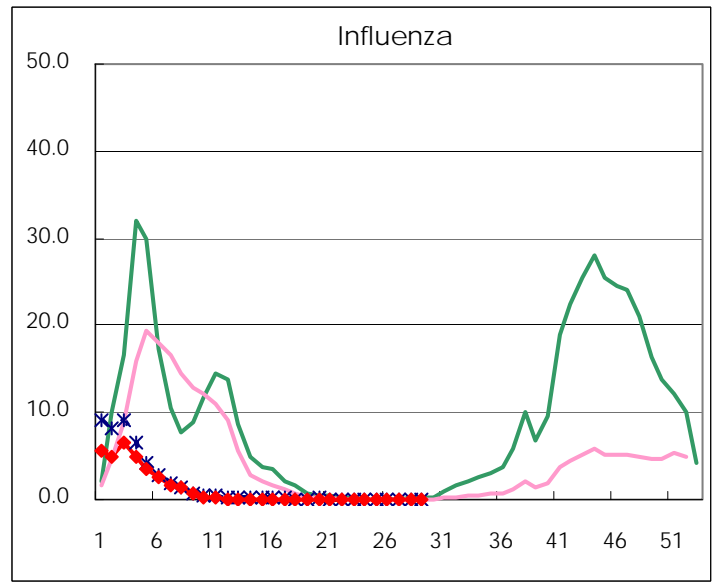
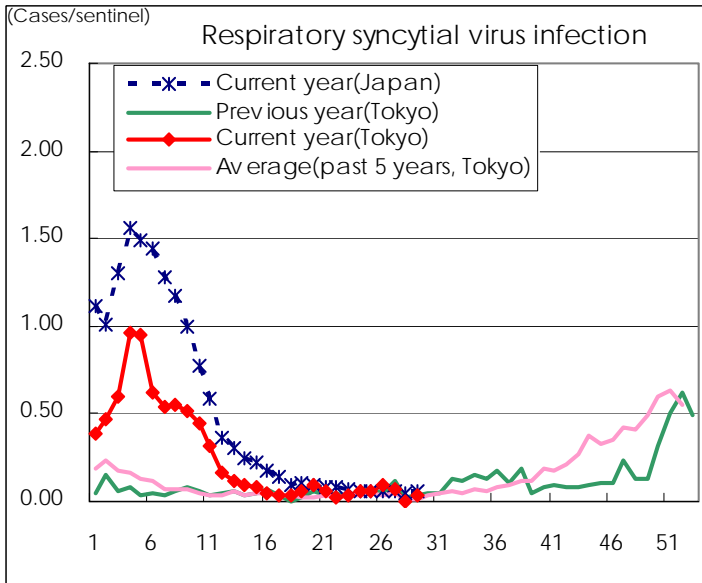
Category	Diseases	Tokyo				Japan		
		26th	27th	28th	29th	Cum 2010	29th	Cum 2010
V	Amebiasis	1	4	2	5	93	4	447
	Viral hepatitis(excluding hepatitis A and E)	1	1			24	1	111
	Acute encephalitis(excluding JE and WNE)	2				12	2	138
	Cryptosporidiosis	1				2		9
	Creutzfeldt-Jakob disease	1				10	1	87
	Severe invasive streptococcal infections(TSLS)	1		1		12	1	73
	Acquired immunodeficiency syndrome (AIDS)	10	14	8	7	267	14	809
	Giardiasis				1	9	1	47
	Meningococcal meningitis							5
	Congenital rubella syndrome							
	Syphilis	5	2	6	1	91	6	332
	Tetanus					2	1	54
	Vancomycin-resistant S. aureus infection							
	Vancomycin-resistant Enterococcus infection	1			2	11	2	61
	Rubella					10		58
Measles	2	6	1	3	54	5	317	
Novel Flu	Novel influenza (swine-origin influenza A/H1N1)	—	—	—	—		—	

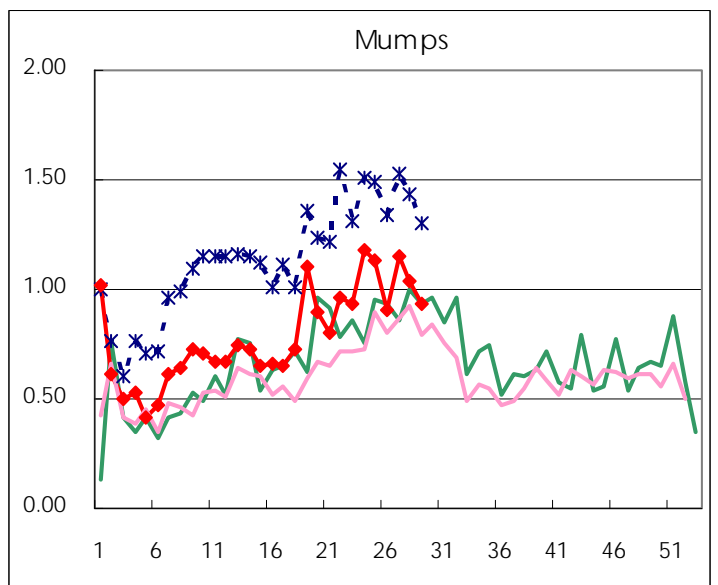
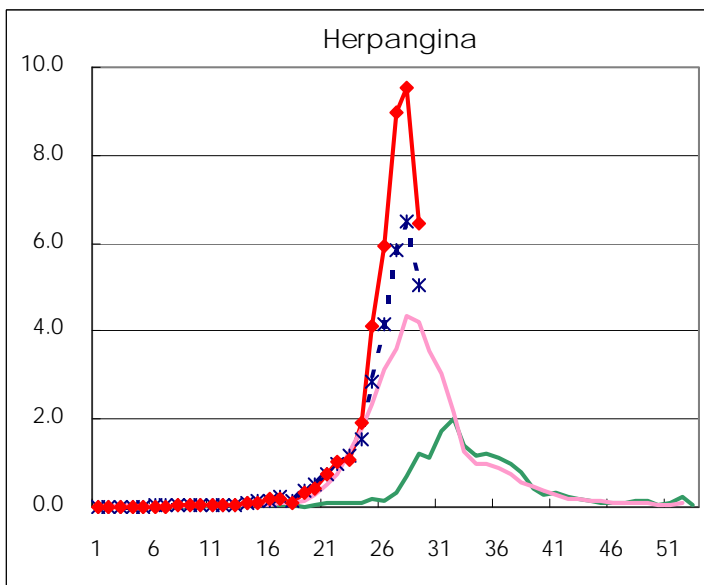
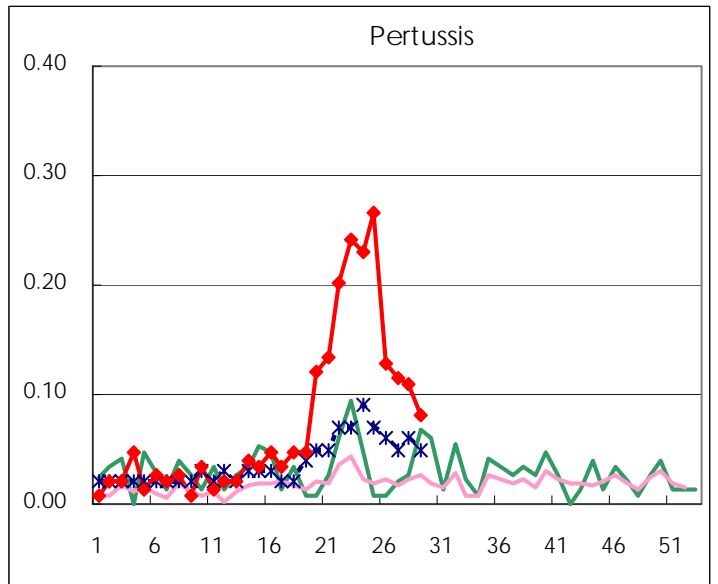
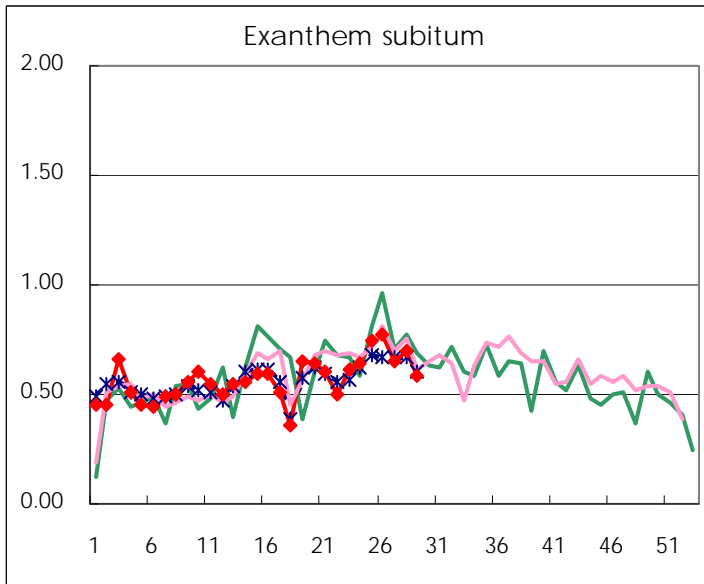
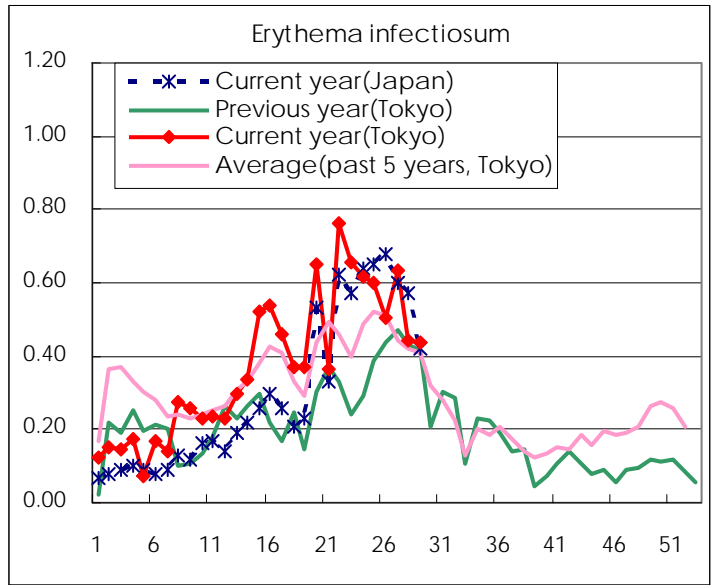
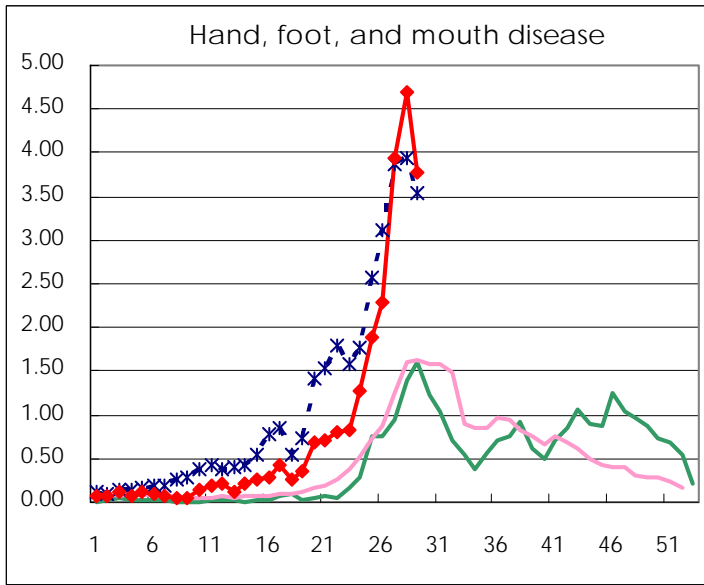
Number of patients with the diseases to be reported
by the designated clinics and hospitals

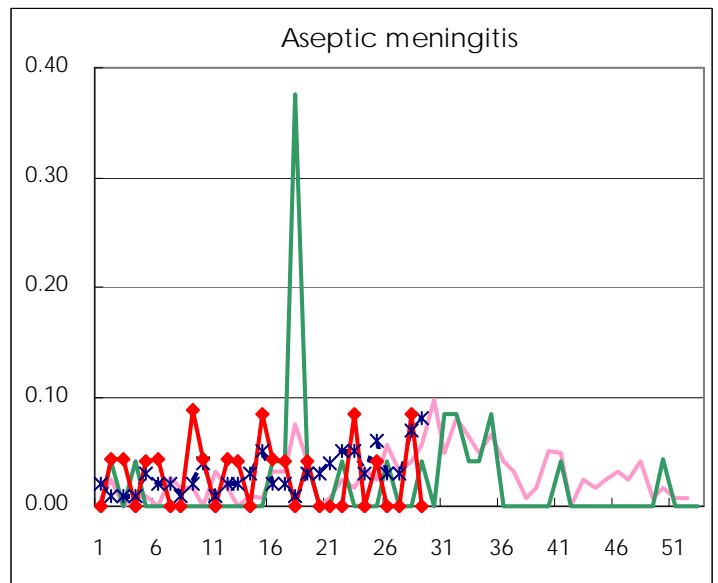
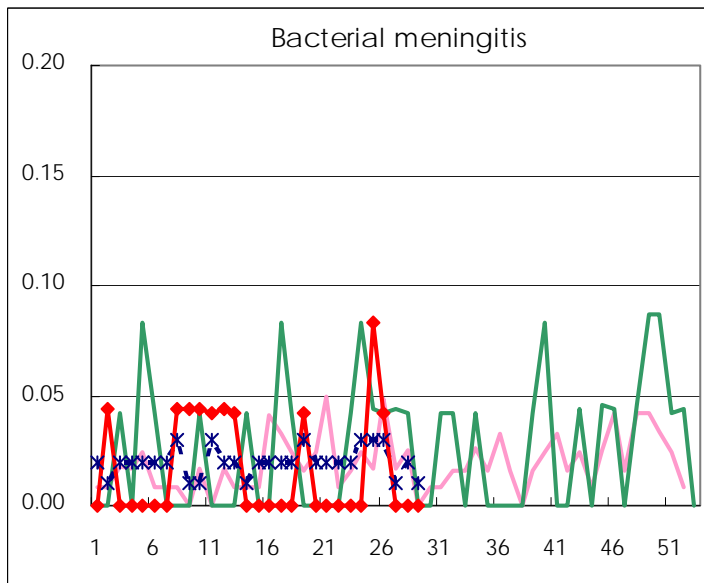
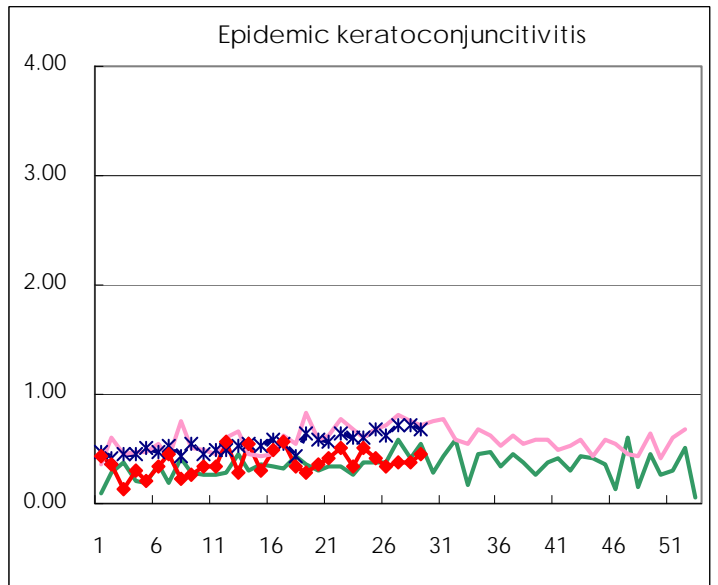
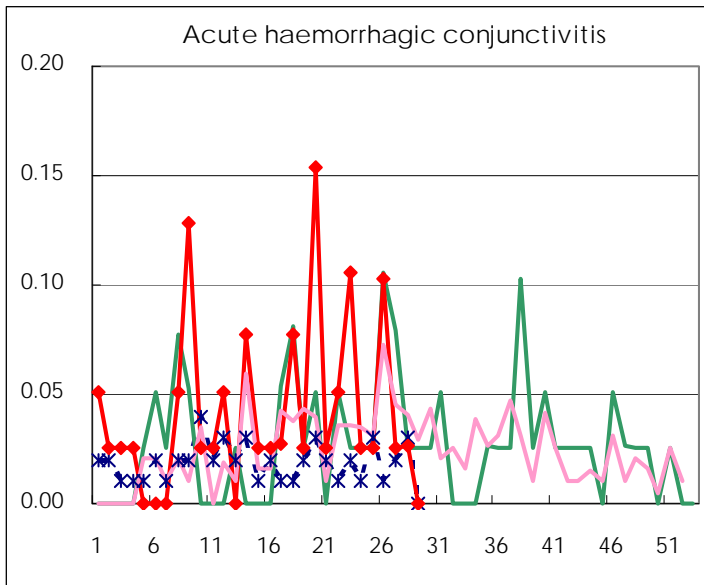
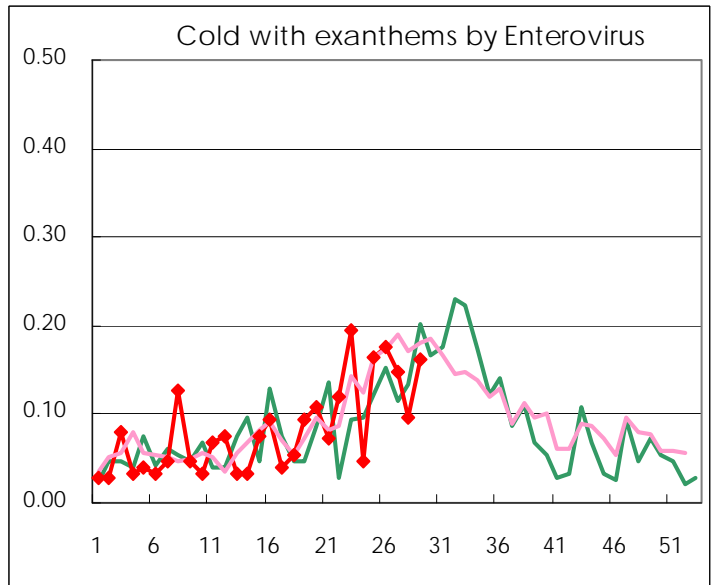
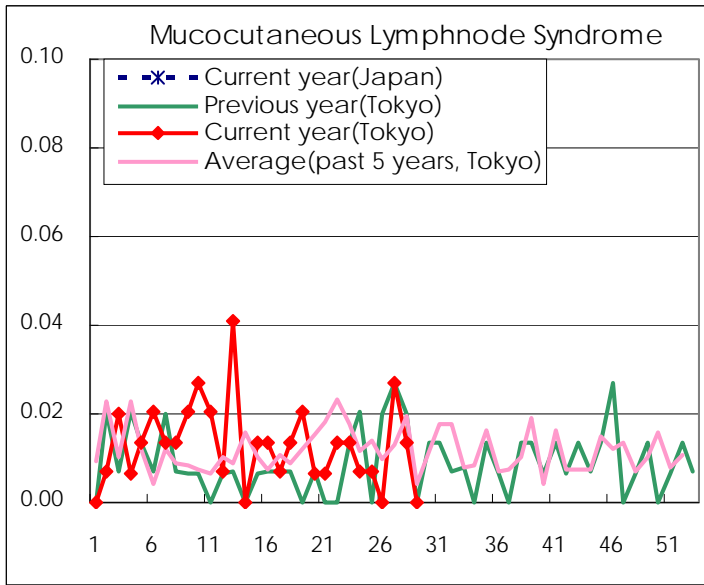
Diseases	2010				
	26th	27th	28th	29th	/sentinel
Respiratory syncytial virus infection	14	10		5	0.03
Pharyngoconjunctival fever	56	53	46	44	0.30
Group A streptococcal pharyngitis	201	176	145	119	0.80
Infectious gastroenteritis	643	587	527	412	2.78
Chickenpox	217	173	170	112	0.76
Hand, foot, and mouth disease	340	584	690	560	3.78
Erythema infectiosum	75	94	65	65	0.44
Exanthem subitum	114	96	103	86	0.58
Pertussis	19	17	16	12	0.08
Herpangina	875	1,325	1,398	954	6.45
Mumps	134	170	153	138	0.93
Cold with exanthems by Enterovirus	26	22	14	24	0.16
Mucocutaneous Lymphnode Syndrome		4	2		
Influenza	6	18	14	7	0.02
Acute hemorrhagic conjunctivitis	4	1	1		
Epidemic keratoconjunctivitis	13	15	14	18	0.46
Bacterial meningitis	1				
Aseptic meningitis			2		
Mycoplasma pneumonia	7	5	5	3	0.13
Chlamydial pneumonia (excluding psittacosis)	1				

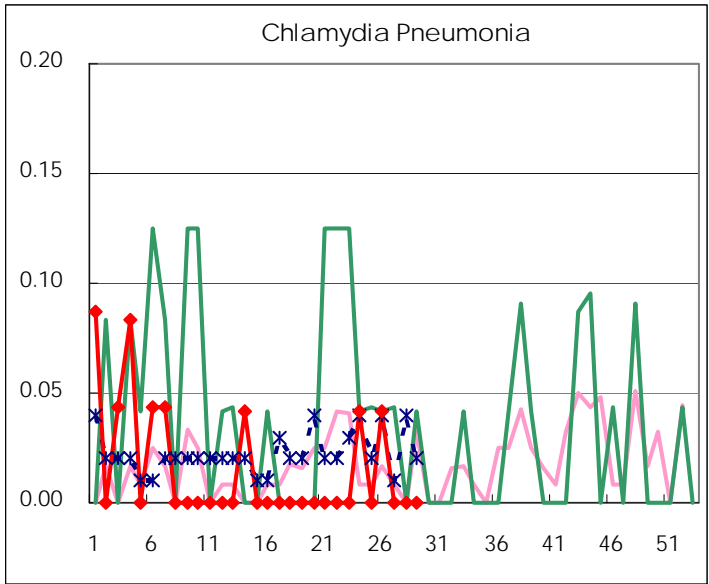
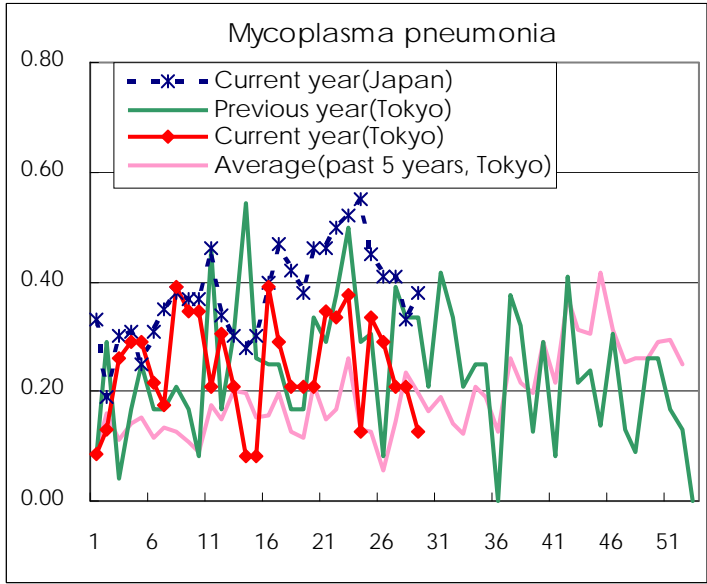
(Blank means 0.)

Disease Trend Graph (weekly reported cases per sentinel in comparison)









Number of sentinel facilities for weekly reporting		
Types of sentinels	Number of sentinels	Sentinels having reported
Pediatric	150	148
Influenza	290	282
Ophthalmic	39	39
Specially-designated	25	24

Tokyo Metropolitan Government
Infectious Disease Surveillance Center