
INFECTIOUS DISEASES WEEKLY REPORT

TOKYO IDWR

Tokyo Metropolitan Infectious Disease Surveillance Center

5 August 2010 / Number 30

Surveillance System in Tokyo, Japan

The infectious diseases which all physicians must report

All physicians must report to health centers the incidence of the diseases which are shown at page one. Health centers electronically report the individual cases to Tokyo Metropolitan Infectious Disease Surveillance Center.

The infectious diseases required to be reported by the sentinels

The numbers of patients who visit the sentinel clinics or hospitals during a week are reported to health centers in Tokyo. And they electronically report the numbers to Tokyo Metropolitan Infectious Disease Surveillance Center. We have about 400 sentinel clinics and hospitals in Tokyo.

1st Week is early January and 52nd Week is end of December.

Tokyo Metropolitan Institute of Public Health
Epidemiological Information Office

TEL:81-3-3363-3213 FAX:81-3-5332-7365
e-mail:idsc@tokyo-eiken.go.jp
URL:idsc.tokyo-eiken.go.jp/

Number of patients with the diseases which all physicians must report

Category	Diseases	Tokyo				Cum 2010	Japan	
		27th	28th	29th	30th		30th	Cum 2010
I	Ebola hemorrhagic fever							
	Crimean-Congo hemorrhagic fever							
	Smallpox							
	South American hemorrhagic fever							
	Plague							
	Marburg disease							
	Lassa fever							
II	Acute poliomyelitis							1
	Tuberculosis	98	56	58	44	2360	285	14212
	Diphtheria							
	Severe Acute Respiratory Syndrome(SARS)							
	Avian influenza H5N1							
III	Cholera					1		4
	Shigellosis	4			1	40	1	97
	Enterohemorrhagic Escherichia coli infection	12	22	11	7	139	129	1712
	Typhoid fever	1				4		17
	Paratyphoid fever					3		14
IV	Hepatitis E					6		40
	West Nile fever							
	Hepatitis A	1		1	1	35	4	280
	Echinococcosis							5
	Yellow fever							
	Psittacosis							7
	Omsk hemorrhagic fever							
	Relapsing fever							
	Kyasanur forest disease							
	Q fever							
	Rabies							
	Coccidioidomycosis							
	Monkeypox							
	Hemorrhagic fever with renal syndrome							
	Western equine encephalitis							
	Tick-borne encephalitis							
	Anthrax							
	Scrub typhus(Tsutsugamushi disease)					5	1	110
	Dengue fever		2			21	4	78
	Eastern equine encephalitis							
	Avian influenza (excluding H5N1)							
	Nipah virus infection							
	Japanese spotted fever					1	2	31
	Japanese encephalitis							
	Epidemic typhus							
	Hantavirus pulmonary syndrome							
	Herpes B virus infection							
	Glanders							
	Brucellosis							2
	Venezuelan equine encephalitis							
	Hendra virus infection							
Botulism								
Malaria	1				12	1	36	
Tularemia								
Lyme disease					1		5	
Lyssavirus infection(excluding rabies)								
Rift valley fever								
Melioidosis					1		2	
Legionellosis	1		3	2	23	26	393	
Leptospirosis					2		5	
Rocky mountain spotted fever								

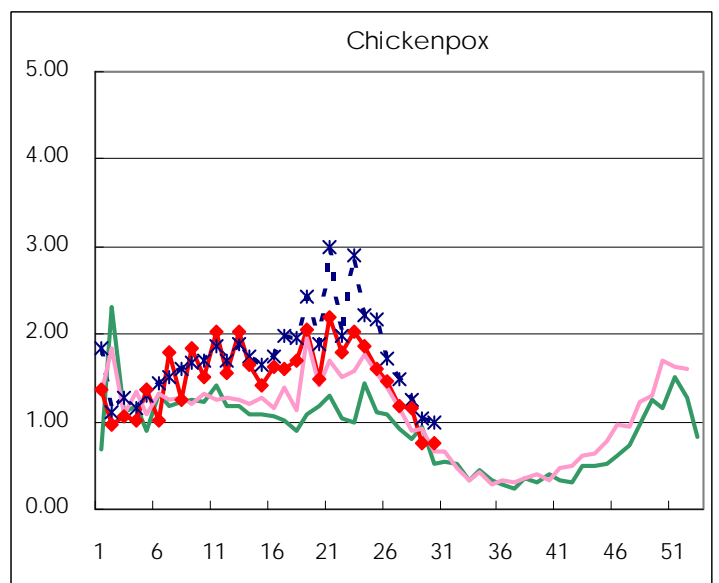
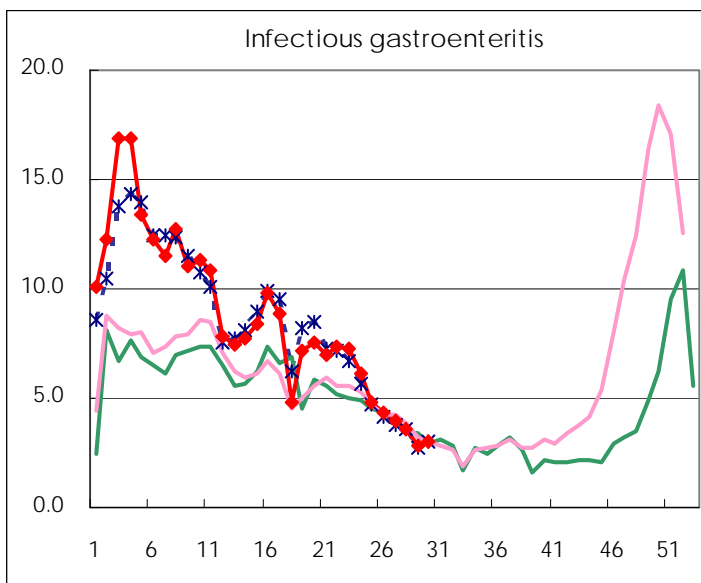
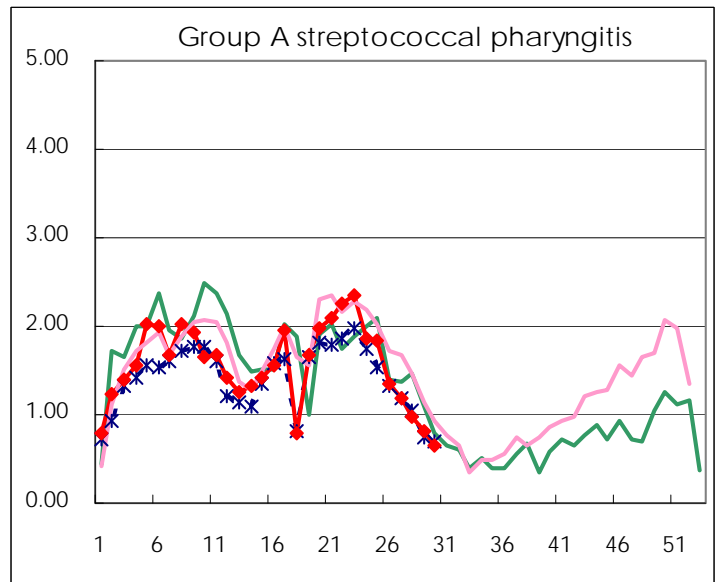
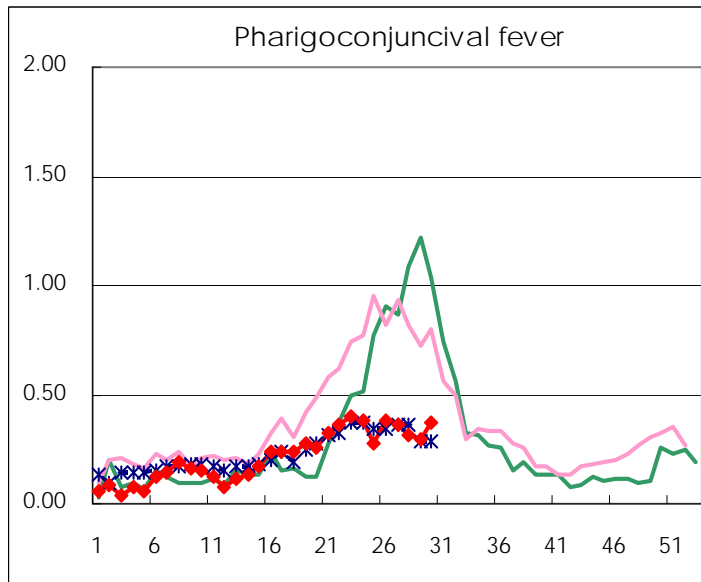
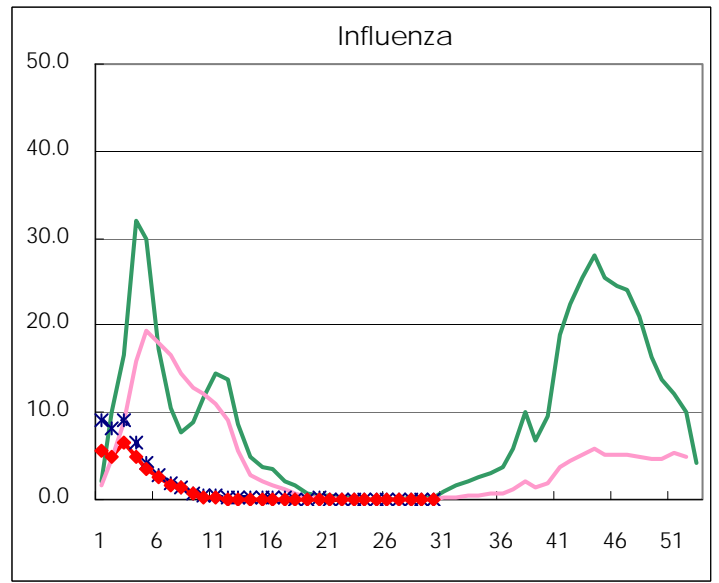
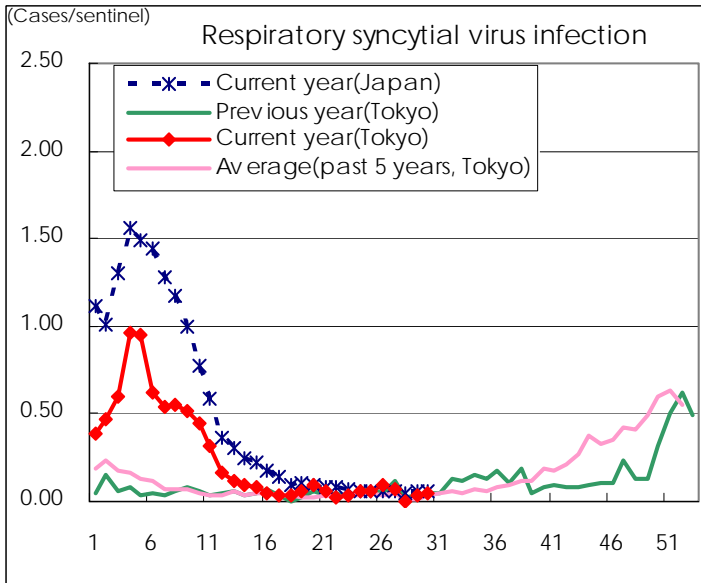
Category	Diseases	Tokyo				Japan		
		27th	28th	29th	30th	Cum 2010	30th	Cum 2010
V	Amebiasis	4	2	5	2	95	11	462
	Viral hepatitis(excluding hepatitis A and E)	1				24	1	113
	Acute encephalitis(excluding JE and WNE)					12	1	142
	Cryptosporidiosis				1	3	1	10
	Creutzfeldt-Jakob disease					10	5	93
	Severe invasive streptococcal infections(TSLS)		1		1	13		74
	Acquired immunodeficiency syndrome (AIDS)	14	8	7	13	280	17	839
	Giardiasis			1		9		47
	Meningococcal meningitis							5
	Congenital rubella syndrome							
	Syphilis	2	6	1	4	95	9	346
	Tetanus					2		54
	Vancomycin-resistant S. aureus infection							
	Vancomycin-resistant Enterococcus infection			2		11	3	64
	Rubella					10	1	60
Measles	6	1	3	1	55	6	326	
Novel Flu	Novel influenza (swine-origin influenza A/H1N1)	—	—	—	—		—	

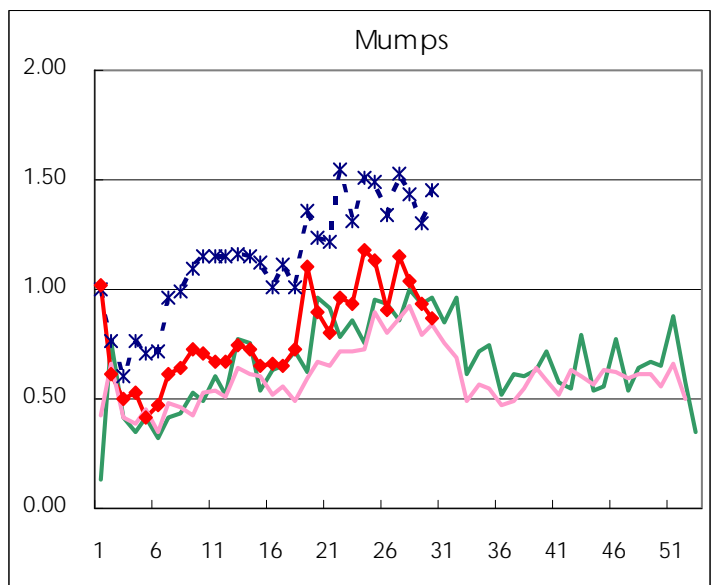
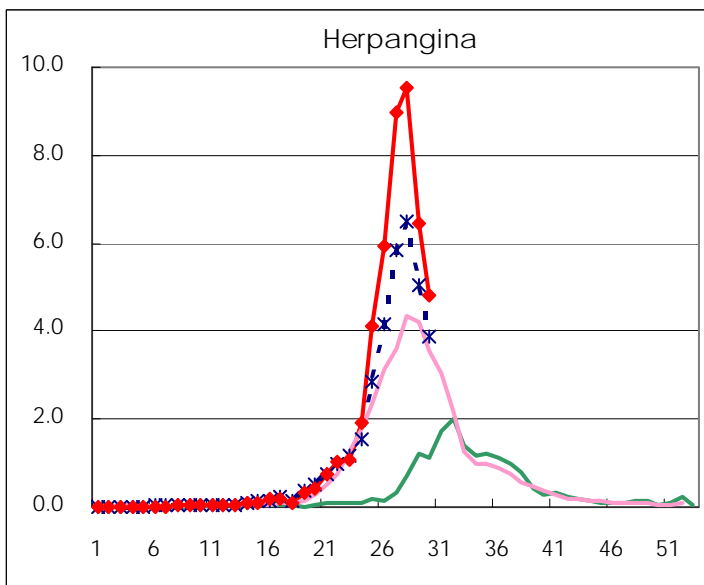
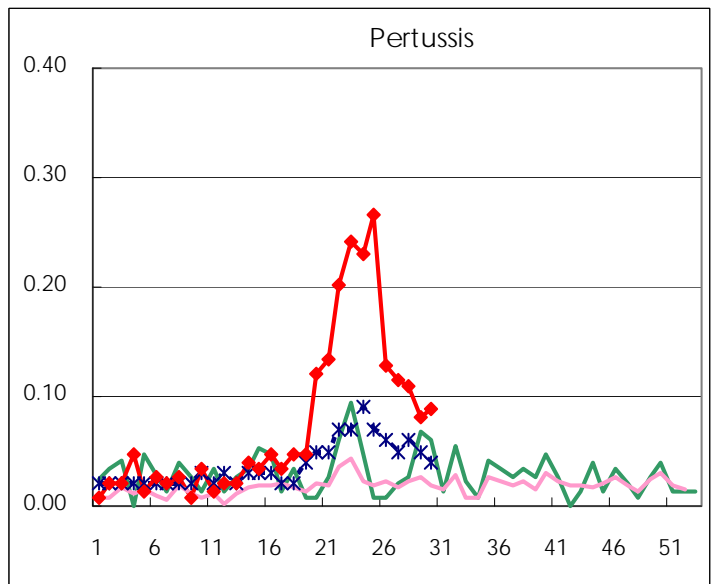
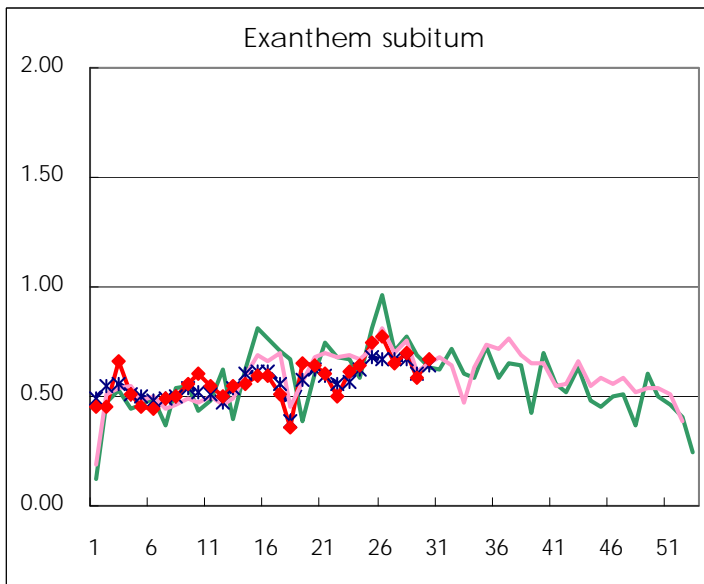
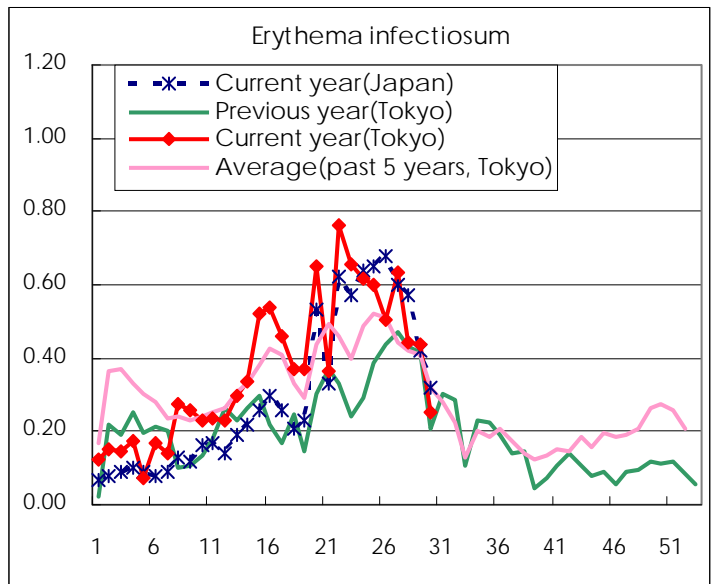
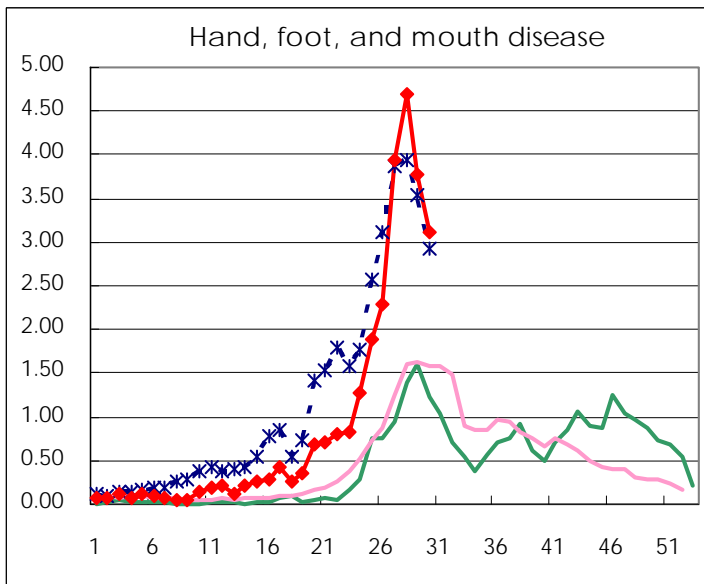
Number of patients with the diseases to be reported
by the designated clinics and hospitals

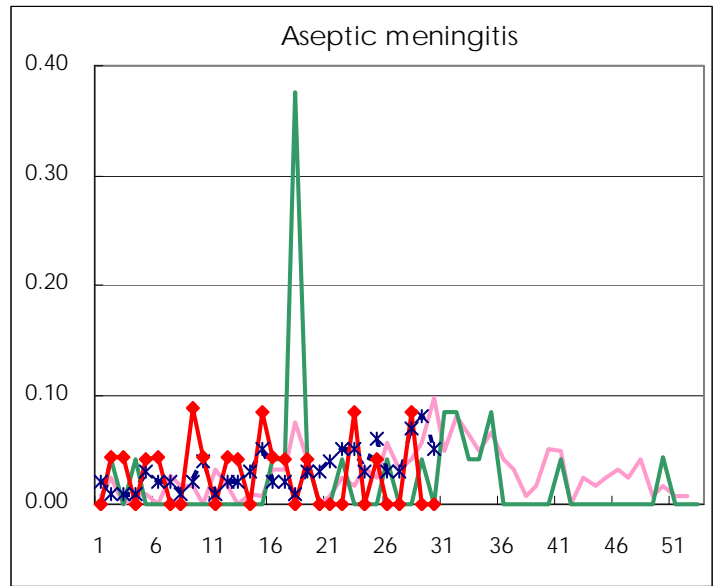
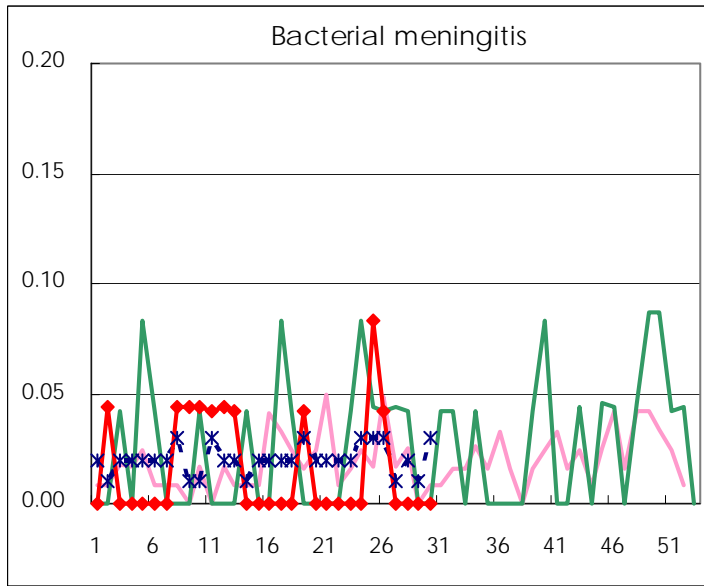
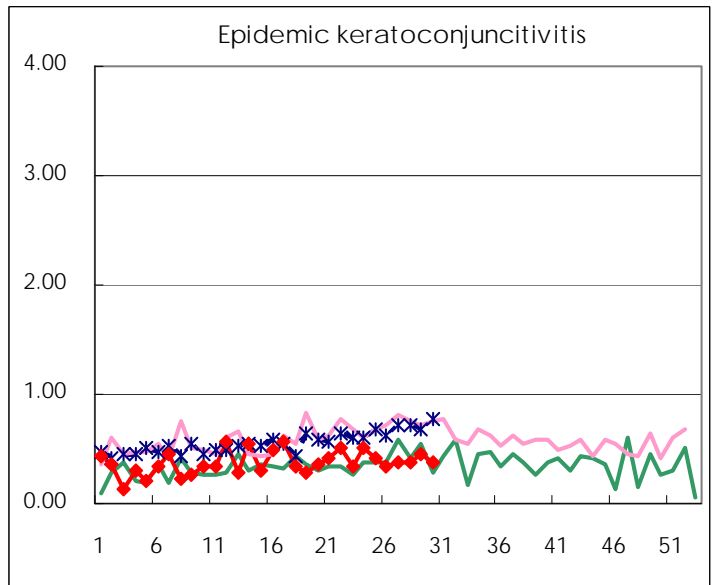
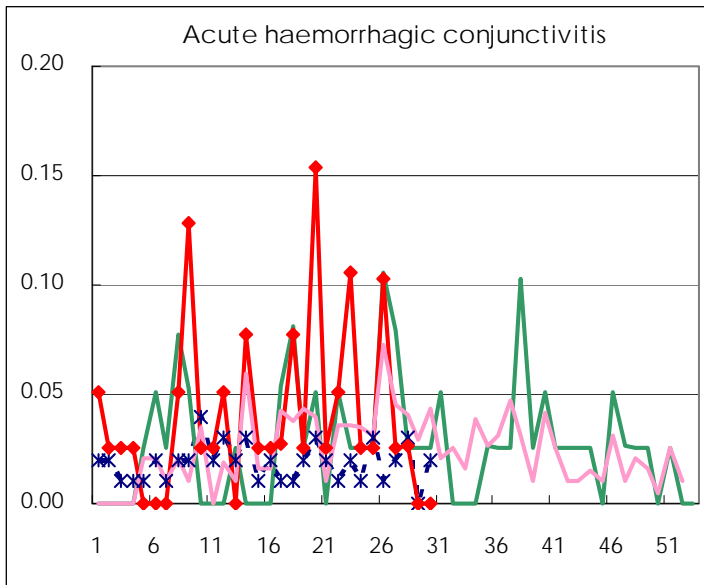
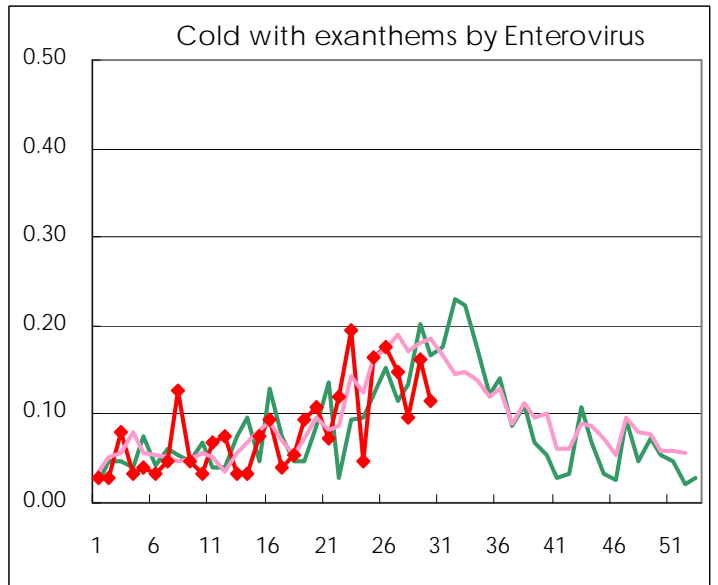
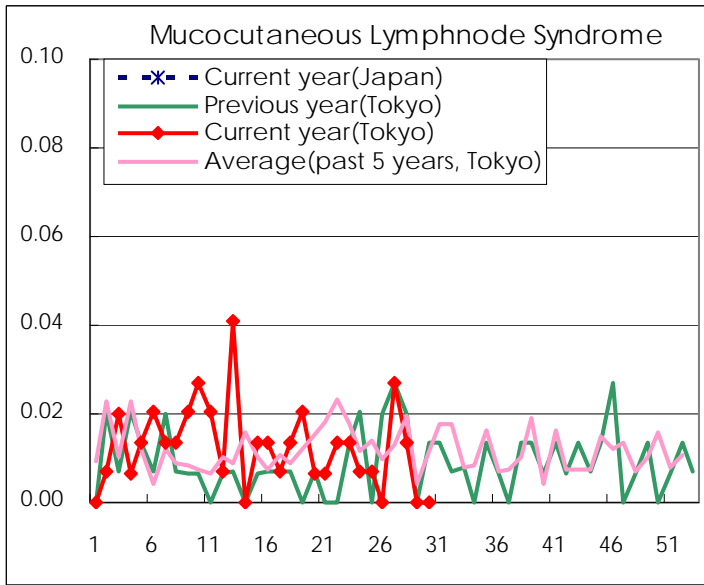
Diseases	2010				
	27th	28th	29th	30th	/sentinel
Respiratory syncytial virus infection	10		5	7	0.05
Pharyngoconjunctival fever	53	46	44	55	0.37
Group A streptococcal pharyngitis	176	145	119	96	0.65
Infectious gastroenteritis	587	527	412	443	2.99
Chickenpox	173	170	112	111	0.75
Hand, foot, and mouth disease	584	690	560	462	3.12
Erythema infectiosum	94	65	65	37	0.25
Exanthem subitum	96	103	86	99	0.67
Pertussis	17	16	12	13	0.09
Herpangina	1,325	1,398	954	713	4.82
Mumps	170	153	138	128	0.86
Cold with exanthems by Enterovirus	22	14	24	17	0.11
Mucocutaneous Lymphnode Syndrome	4	2			
Influenza	18	14	7	5	0.02
Acute hemorrhagic conjunctivitis	1	1			
Epidemic keratoconjunctivitis	15	14	18	15	0.38
Bacterial meningitis					
Aseptic meningitis		2			
Mycoplasma pneumonia	5	5	3	7	0.29
Chlamydial pneumonia (excluding psittacosis)					

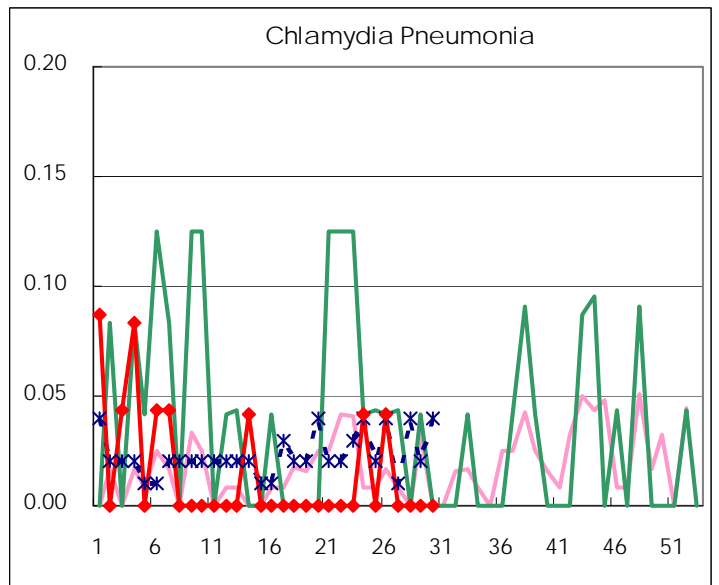
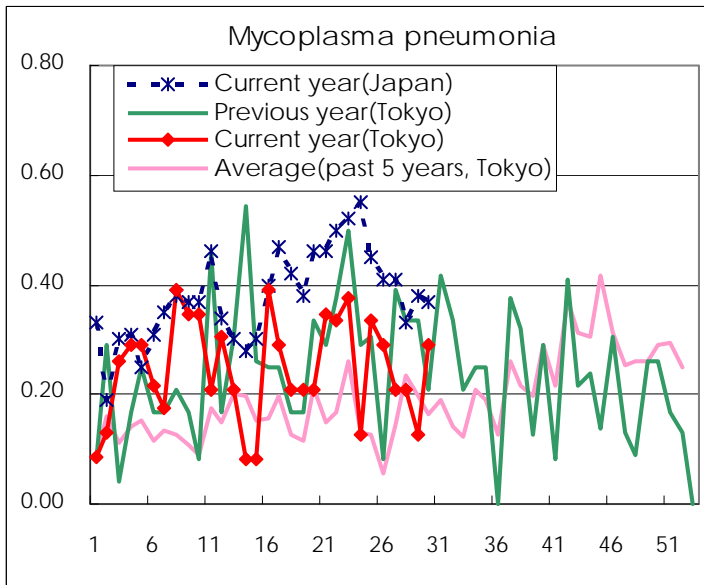
(Blank means 0.)

Disease Trend Graph (weekly reported cases per sentinel in comparison)









Number of sentinel facilities for weekly reporting		
Types of sentinels	Number of sentinels	Sentinels having reported
Pediatric	150	148
Influenza	290	280
Ophthalmic	39	39
Specially-designated	25	24

Tokyo Metropolitan Government
Infectious Disease Surveillance Center