

---

INFECTIOUS DISEASES WEEKLY REPORT

# TOKYO IDWR

Tokyo Metropolitan Infectious Disease Surveillance Center

## 26 August 2010 / Number 33

### Surveillance System in Tokyo, Japan

The infectious diseases which all physicians must report

All physicians must report to health centers the incidence of the diseases which are shown at page one. Health centers electronically report the individual cases to Tokyo Metropolitan Infectious Disease Surveillance Center.

The infectious diseases required to be reported by the sentinels

The numbers of patients who visit the sentinel clinics or hospitals during a week are reported to health centers in Tokyo. And they electronically report the numbers to Tokyo Metropolitan Infectious Disease Surveillance Center. We have about 400 sentinel clinics and hospitals in Tokyo.

1st Week is early January and 52nd Week is end of December.

Tokyo Metropolitan Institute of Public Health  
Epidemiological Information Office

TEL:81-3-3363-3213 FAX:81-3-5332-7365

e-mail:[idsc@tokyo-eiken.go.jp](mailto:idsc@tokyo-eiken.go.jp)

URL:[idsc.tokyo-eiken.go.jp/](http://idsc.tokyo-eiken.go.jp/)

---

## Number of patients with the diseases which all physicians must report

Category	Diseases	Tokyo				Japan		
		30th	31st	32nd	33rd	Cum 2010	33rd	Cum 2010
I	Ebola hemorrhagic fever							
	Crimean-Congo hemorrhagic fever							
	Smallpox							
	South American hemorrhagic fever							
	Plague							
	Marburg disease							
	Lassa fever							
II	Acute poliomyelitis							1
	Tuberculosis	54	69	55	64	2,597	304	15,925
	Diphtheria							
	Severe Acute Respiratory Syndrome(SARS)							
	Avian influenza H5N1							
III	Cholera					1	1	5
	Shigellosis	1	5	1	2	48	7	113
	Enterohemorrhagic Escherichia coli infection	7	17	18	24	198	194	2,347
	Typhoid fever		1		1	6	1	21
	Paratyphoid fever					3		14
IV	Hepatitis E			1		7	1	45
	West Nile fever							
	Hepatitis A	1			1	36	3	290
	Echinococcosis							6
	Yellow fever							
	Psittacosis							7
	Omsk hemorrhagic fever							
	Relapsing fever							
	Kyasanur forest disease							
	Q fever							1
	Rabies							
	Coccidioidomycosis							
	Monkeypox							
	Hemorrhagic fever with renal syndrome							
	Western equine encephalitis							
	Tick-borne encephalitis							
	Anthrax							
	Scrub typhus(Tsutsugamushi disease)					5	1	111
	Dengue fever		2	2	2	27	9	112
	Eastern equine encephalitis							
	Avian influenza (excluding H5N1)							
	Nipah virus infection							
	Japanese spotted fever					1	3	47
	Japanese encephalitis							
	Epidemic typhus							
	Hantavirus pulmonary syndrome							
	Herpes B virus infection							
	Glanders							
	Brucellosis							2
	Venezuelan equine encephalitis							
	Hendra virus infection							
	Botulism							
Malaria		1	3	2	18	3	45	
Tularemia								
Lyme disease					1		8	
Lyssavirus infection(excluding rabies)								
Rift valley fever								
Melioidosis					1		2	
Legionellosis	2	1	1	1	26	11	446	
Leptospirosis					2		5	
Rocky mountain spotted fever								

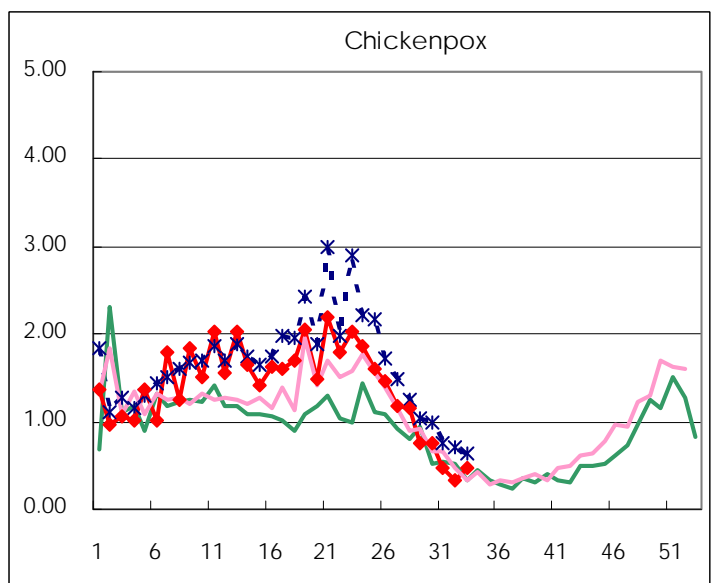
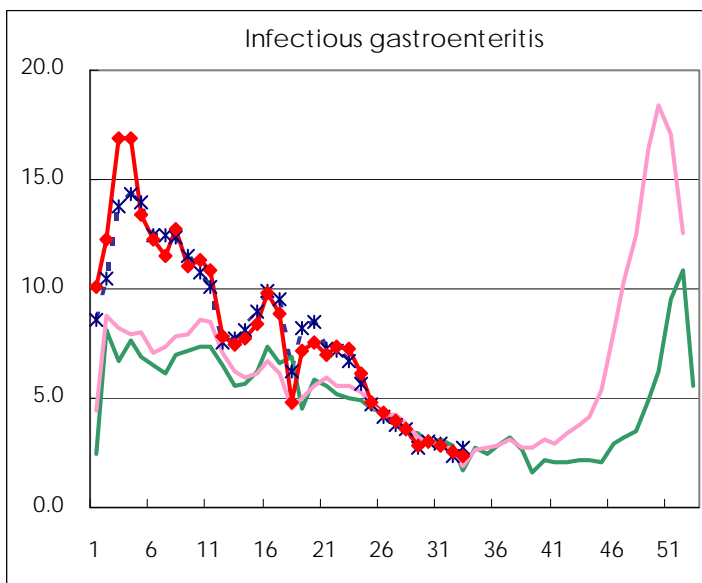
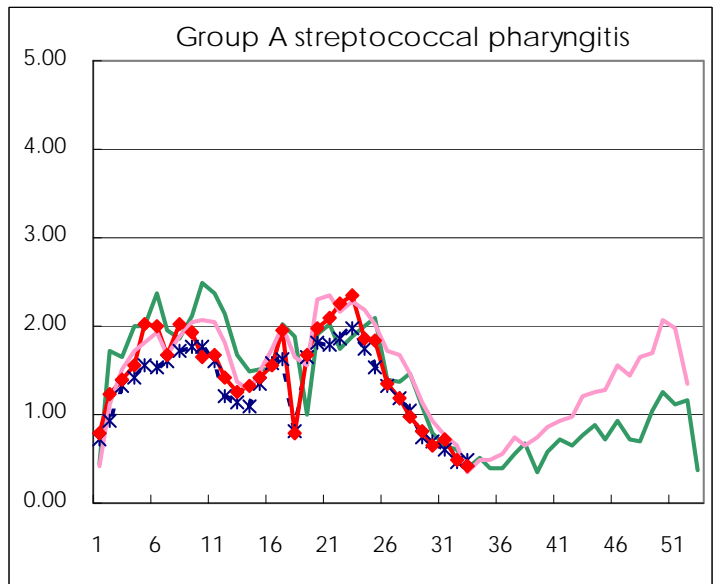
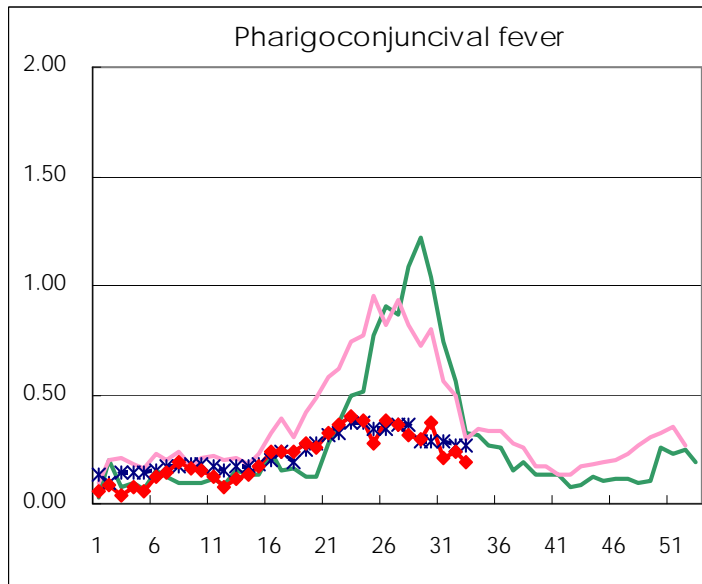
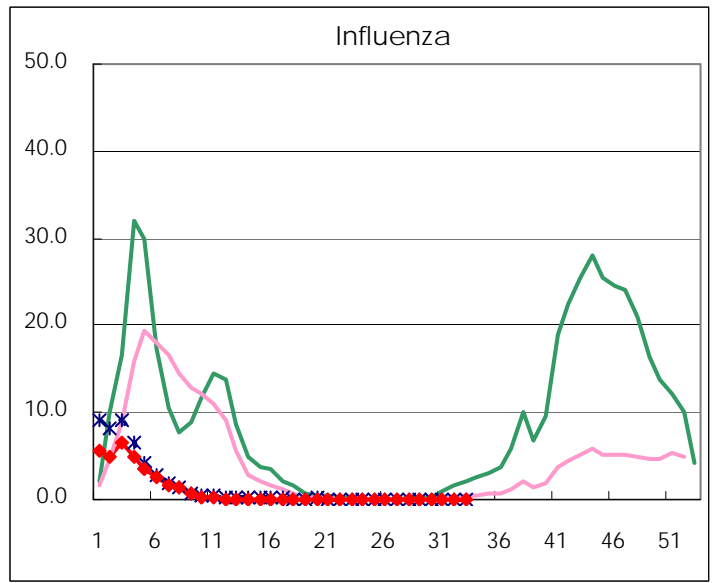
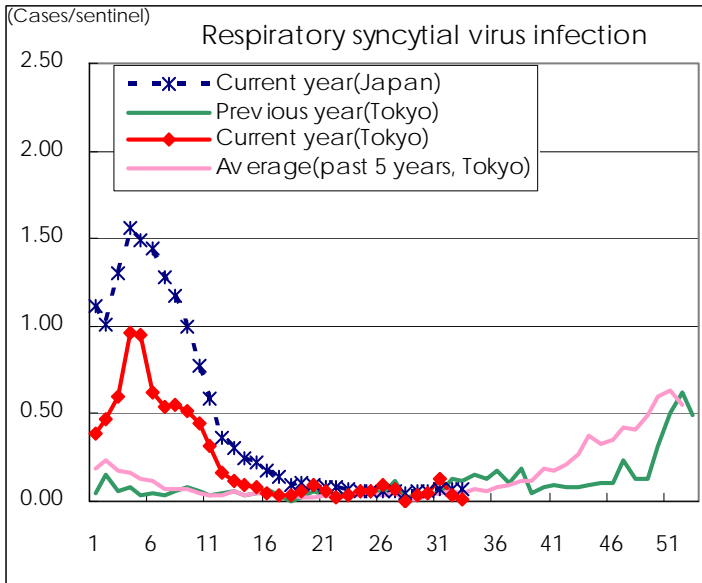
Category	Diseases	Tokyo					Japan	
		30th	31st	32nd	33rd	Cum 2010	33rd	Cum 2010
V	Amebiasis	2	4	6	3	108	10	519
	Viral hepatitis(excluding hepatitis A and E)		2		1	27	1	125
	Acute encephalitis(excluding JE and WNE)					12	2	153
	Cryptosporidiosis	1				3		10
	Creutzfeldt-Jakob disease					10	1	105
	Severe invasive streptococcal infections(TSLS)	1		1		14	1	83
	Acquired immunodeficiency syndrome (AIDS)	13	6	9	6	301	13	932
	Giardiasis					9	1	48
	Meningococcal meningitis							5
	Congenital rubella syndrome							
	Syphilis	5	6		4	106	3	381
	Tetanus					2	3	61
	Vancomycin-resistant S. aureus infection							
	Vancomycin-resistant Enterococcus infection					11	1	68
	Rubella					10	1	66
Measles		1		3	58	8	353	
Novel Flu	Novel influenza (swine-origin influenza A/H1N1)	—	—	—	—		—	

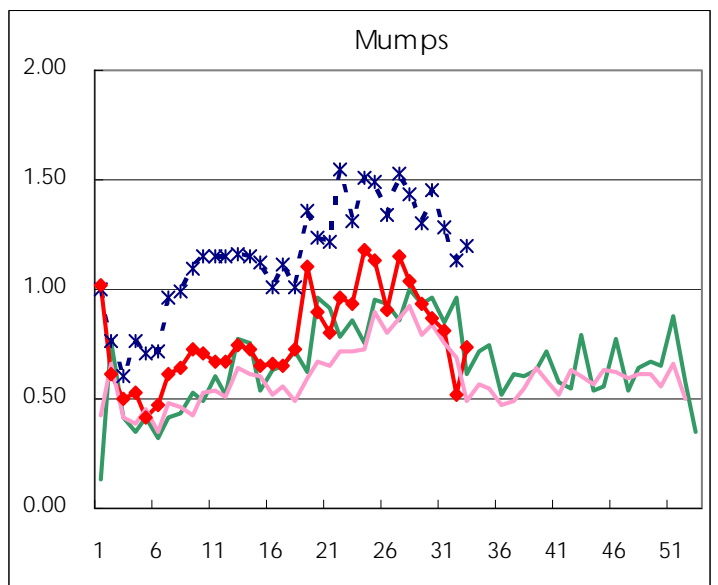
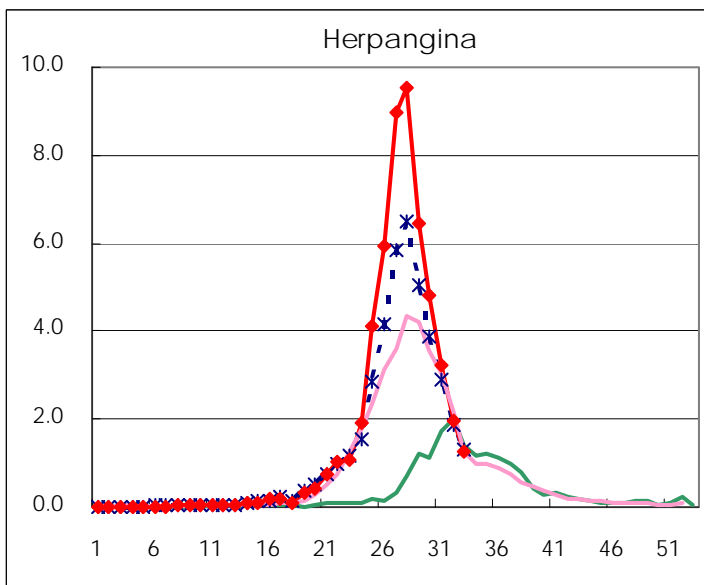
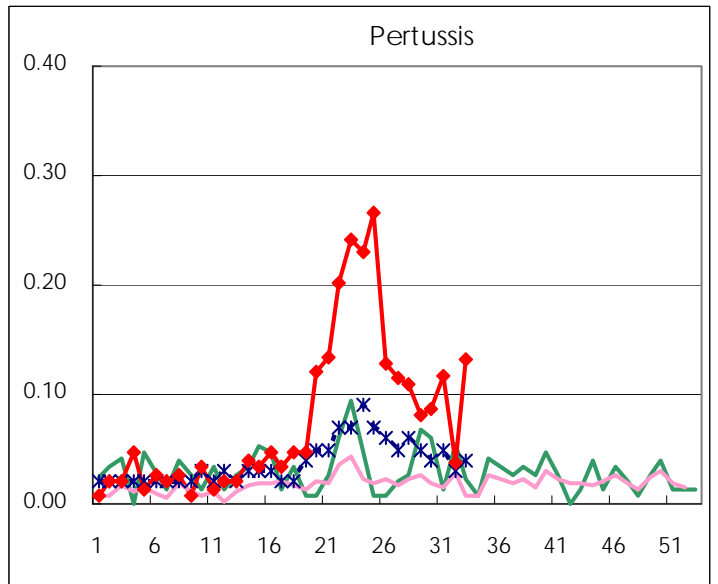
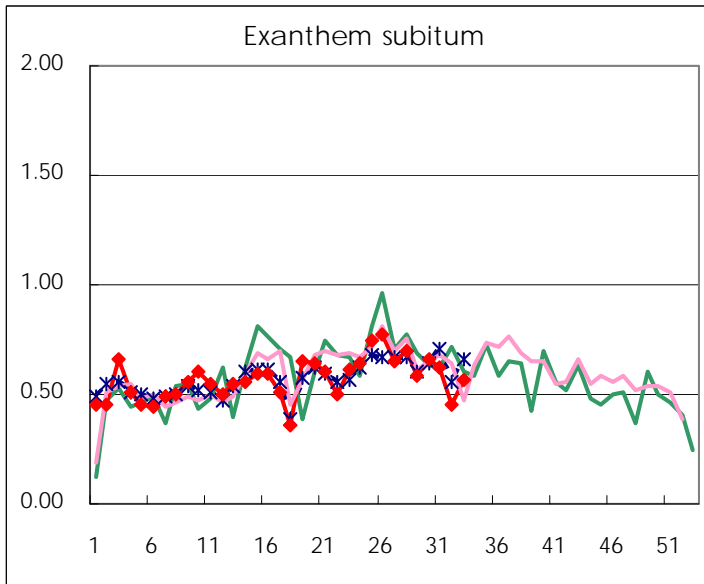
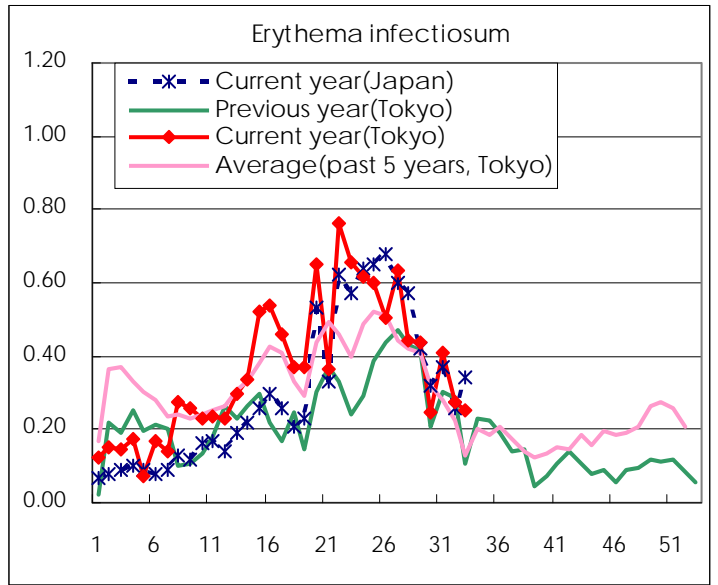
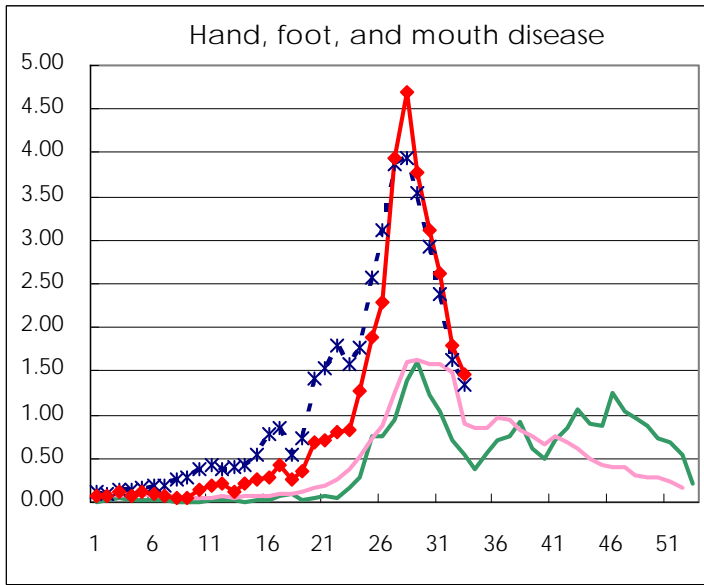
Number of patients with the diseases to be reported  
by the designated clinics and hospitals

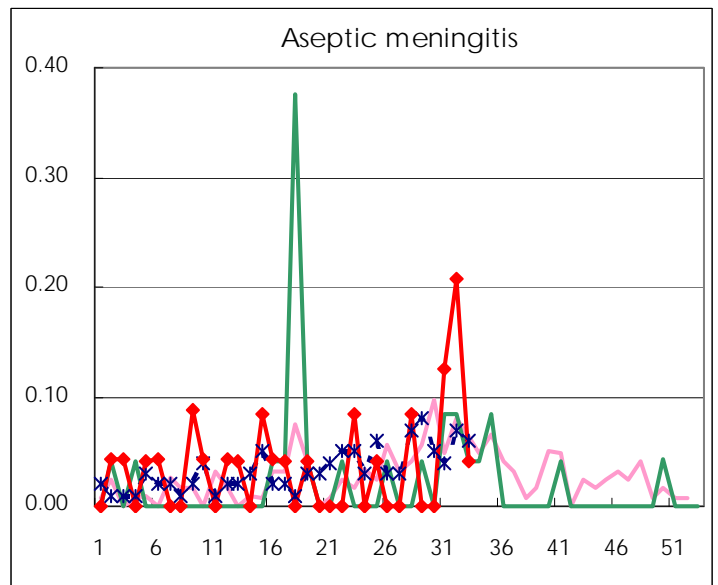
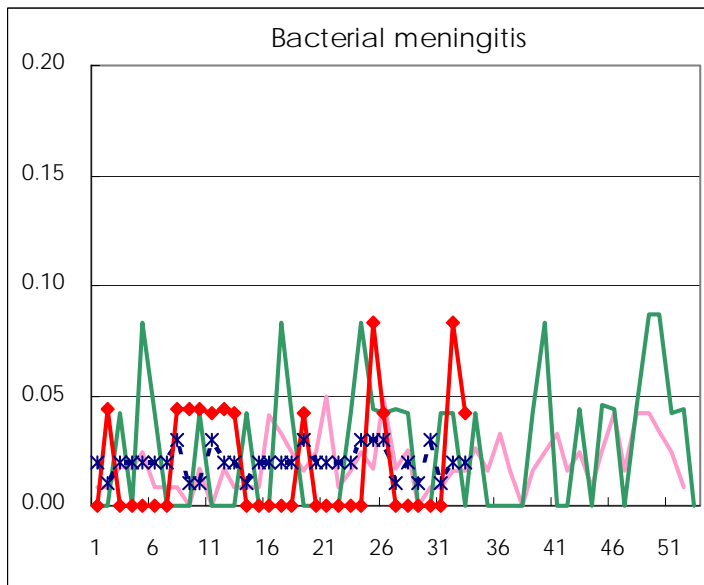
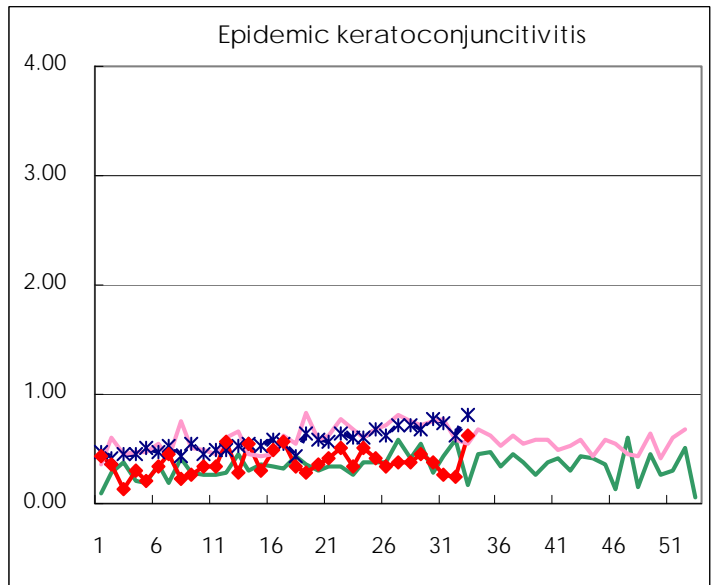
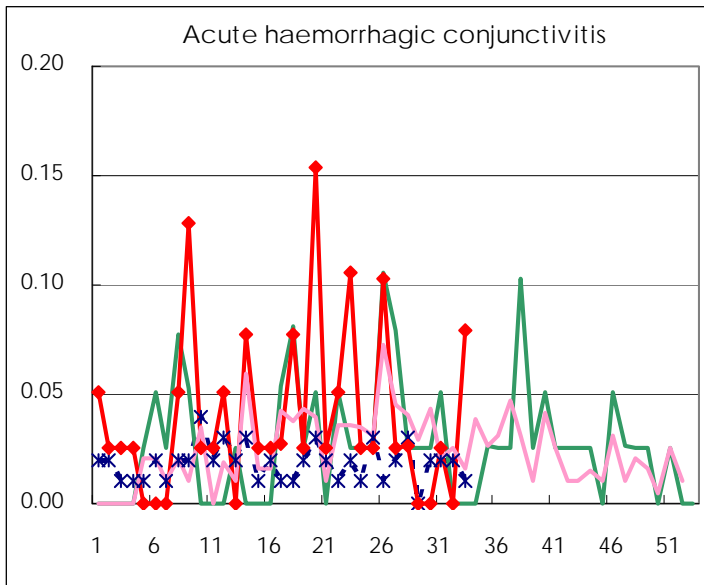
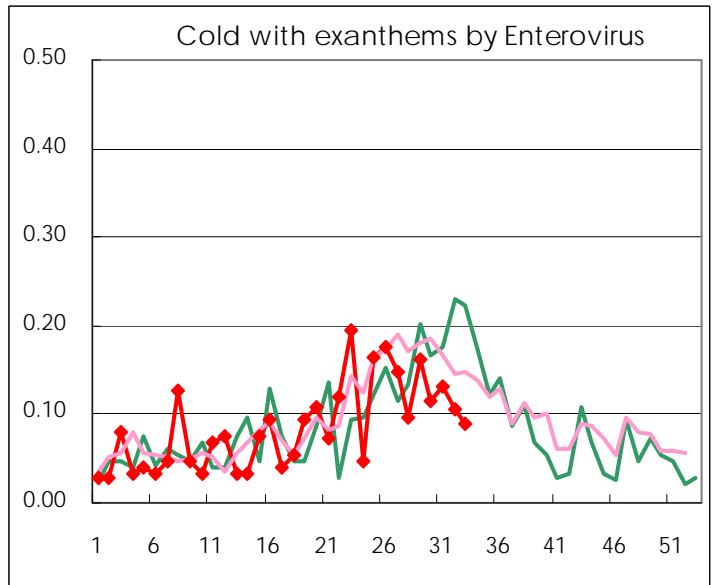
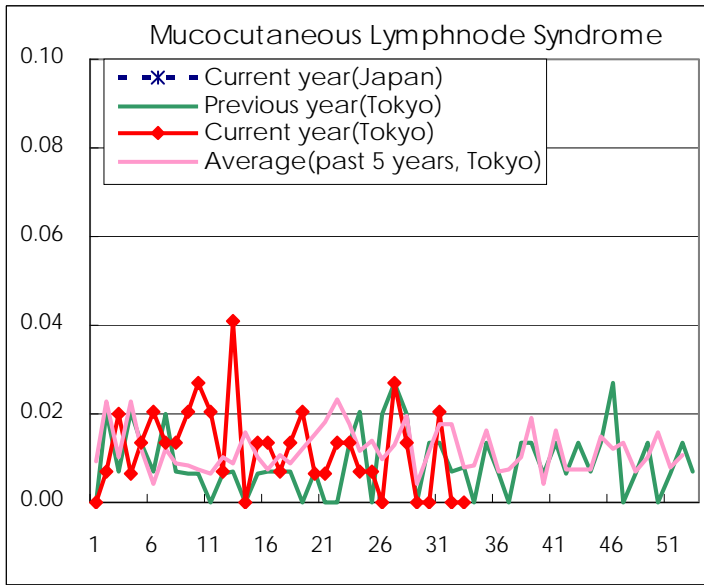
Diseases	2010				
	30th	31st	32nd	33rd	/sentinel
Respiratory syncytial virus infection	7	18	5	2	0.01
Pharyngoconjunctival fever	55	30	32	27	0.19
Group A streptococcal pharyngitis	96	106	63	60	0.42
Infectious gastroenteritis	444	415	336	334	2.32
Chickenpox	112	67	45	67	0.47
Hand, foot, and mouth disease	464	379	236	209	1.45
Erythema infectiosum	37	59	36	36	0.25
Exanthem subitum	99	90	60	81	0.56
Pertussis	13	17	5	19	0.13
Herpangina	716	467	260	182	1.26
Mumps	129	118	69	106	0.74
Cold with exanthems by Enterovirus	17	19	14	13	0.09
Mucocutaneous Lymphnode Syndrome		3			
Influenza	5	14	4	5	0.02
Acute hemorrhagic conjunctivitis		1		3	0.08
Epidemic keratoconjunctivitis	15	10	9	24	0.63
Bacterial meningitis			2	1	0.04
Aseptic meningitis		3	5	1	0.04
Mycoplasma pneumonia	7	11	5	6	0.25
Chlamydial pneumonia (excluding psittacosis)					

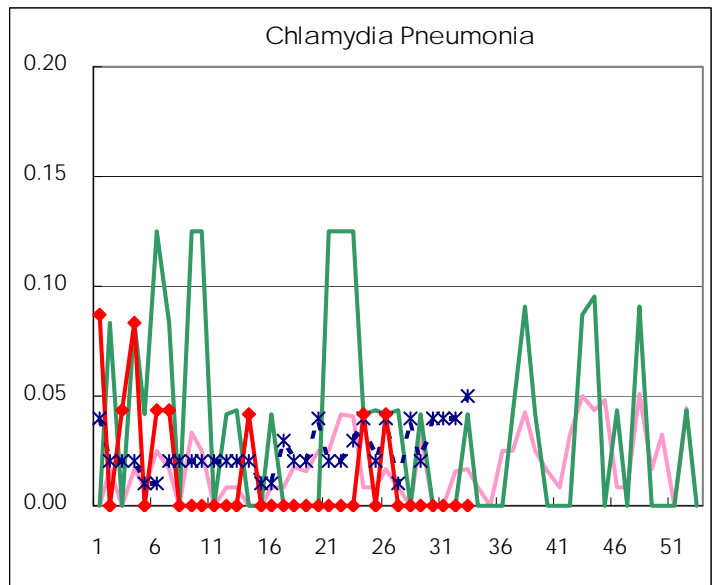
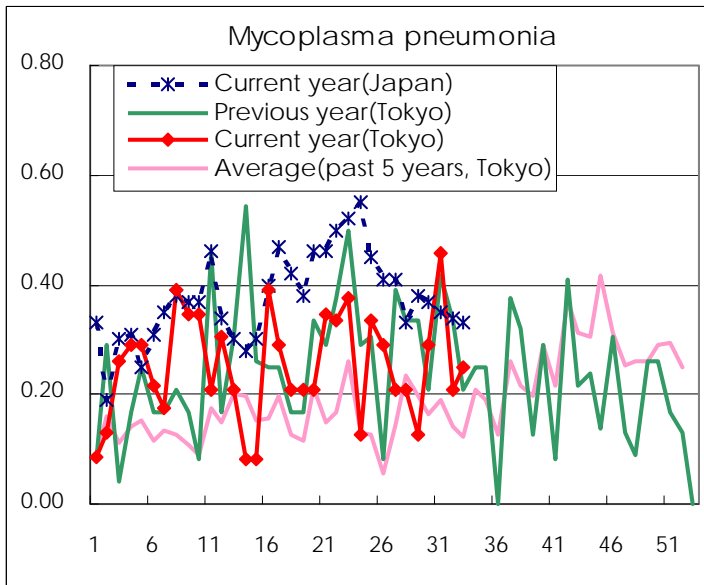
( Blank means 0. )

# Disease Trend Graph (weekly reported cases per sentinel in comparison)









Number of sentinel facilities for weekly reporting		
Types of sentinels	Number of sentinels	Sentinels having reported
Pediatric	150	144
Influenza	290	280
Ophthalmic	39	38
Specially-designated	25	24

Tokyo Metropolitan Government  
**Infectious Disease Surveillance Center**