
INFECTIOUS DISEASES WEEKLY REPORT

TOKYO IDWR

Tokyo Metropolitan Infectious Disease Surveillance Center

2 September 2010 / Number 34

Surveillance System in Tokyo, Japan

The infectious diseases which all physicians must report

All physicians must report to health centers the incidence of the diseases which are shown at page one. Health centers electronically report the individual cases to Tokyo Metropolitan Infectious Disease Surveillance Center.

The infectious diseases required to be reported by the sentinels

The numbers of patients who visit the sentinel clinics or hospitals during a week are reported to health centers in Tokyo. And they electronically report the numbers to Tokyo Metropolitan Infectious Disease Surveillance Center. We have about 400 sentinel clinics and hospitals in Tokyo.

1st Week is early January and 52nd Week is end of December.

Tokyo Metropolitan Institute of Public Health
Epidemiological Information Office

TEL:81-3-3363-3213 FAX:81-3-5332-7365
e-mail:idsc@tokyo-eiken.go.jp
URL:idsc.tokyo-eiken.go.jp/

Number of patients with the diseases which all physicians must report

Category	Diseases	Tokyo				Japan		
		31st	32nd	33rd	34th	Cum 2010	34th	Cum 2010
I	Ebola hemorrhagic fever							
	Crimean-Congo hemorrhagic fever							
	Smallpox							
	South American hemorrhagic fever							
	Plague							
	Marburg disease							
	Lassa fever							
II	Acute poliomyelitis							1
	Tuberculosis	69	55	66	37	2,646	317	16,416
	Diphtheria							
	Severe Acute Respiratory Syndrome(SARS)							
	Avian influenza H5N1							
III	Cholera					1	1	6
	Shigellosis	5	1	2	1	49	7	121
	Enterohemorrhagic Escherichia coli infection	17	18	25	19	218	232	2,617
	Typhoid fever	1		1		6		21
	Paratyphoid fever					3		14
IV	Hepatitis E		1			7		46
	West Nile fever							
	Hepatitis A			1	1	37	4	296
	Echinococcosis							6
	Yellow fever							
	Psittacosis						2	9
	Omsk hemorrhagic fever							
	Relapsing fever							
	Kyasanur forest disease							
	Q fever							1
	Rabies							
	Coccidioidomycosis							
	Monkeypox							
	Hemorrhagic fever with renal syndrome							
	Western equine encephalitis							
	Tick-borne encephalitis							
	Anthrax							
	Scrub typhus(Tsutsugamushi disease)					5		111
	Dengue fever	2	2	2	3	30	12	126
	Eastern equine encephalitis							
	Avian influenza (excluding H5N1)							
	Nipah virus infection							
	Japanese spotted fever					1	4	55
	Japanese encephalitis							
	Epidemic typhus							
	Hantavirus pulmonary syndrome							
	Herpes B virus infection							
	Glanders							
	Brucellosis							2
	Venezuelan equine encephalitis							
	Hendra virus infection							
	Botulism							
Malaria	1	3	2	1	19	2	47	
Tularemia								
Lyme disease					1		8	
Lyssavirus infection(excluding rabies)								
Rift valley fever								
Melioidosis					1		2	
Legionellosis	1	1	1		26	17	463	
Leptospirosis					2	1	6	
Rocky mountain spotted fever								

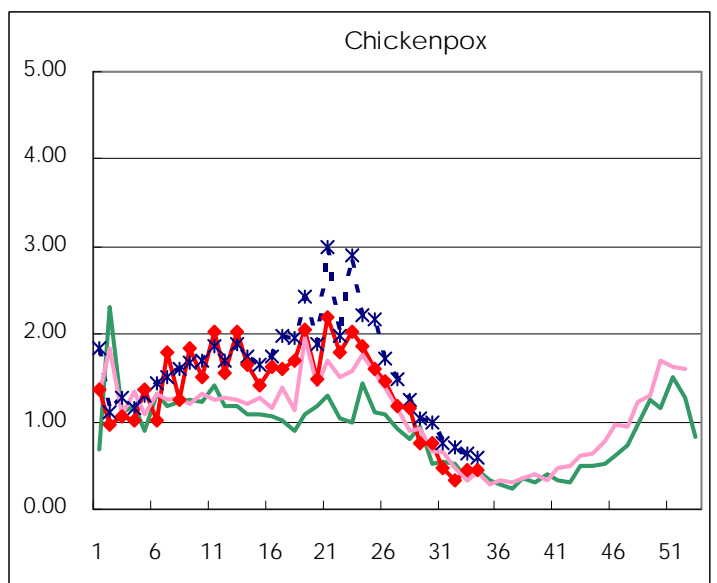
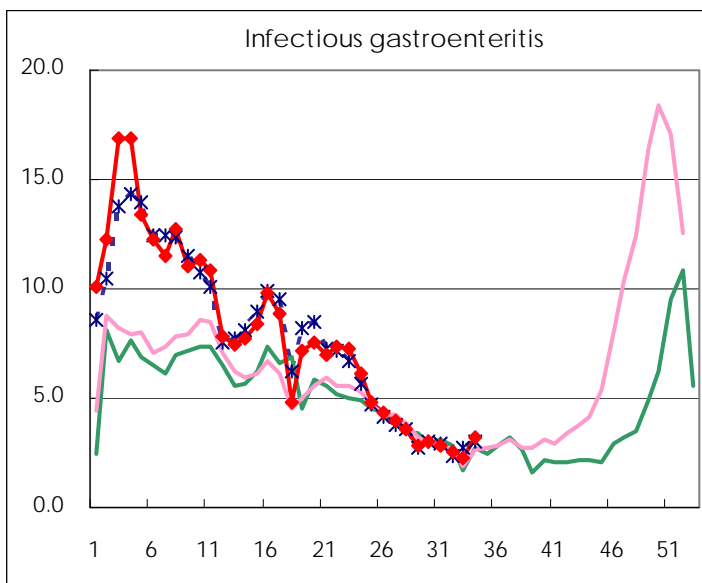
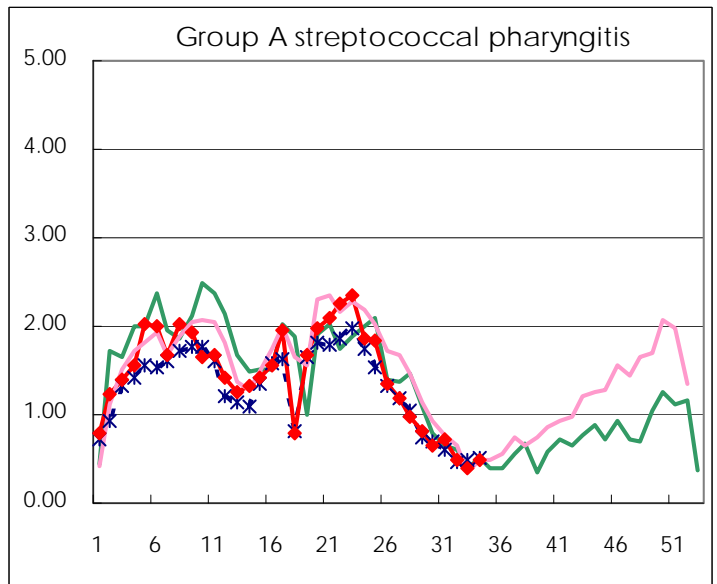
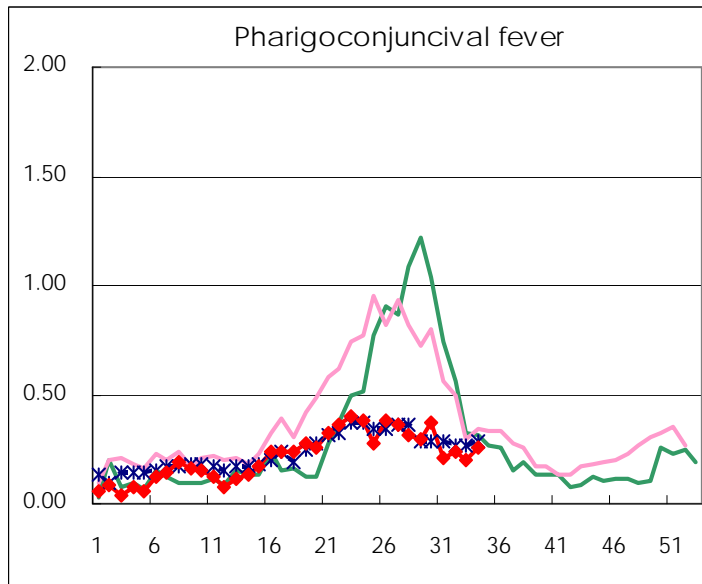
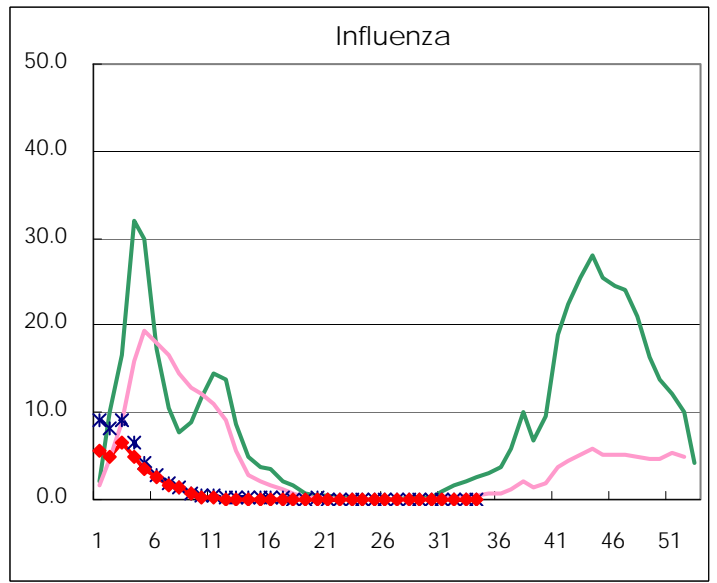
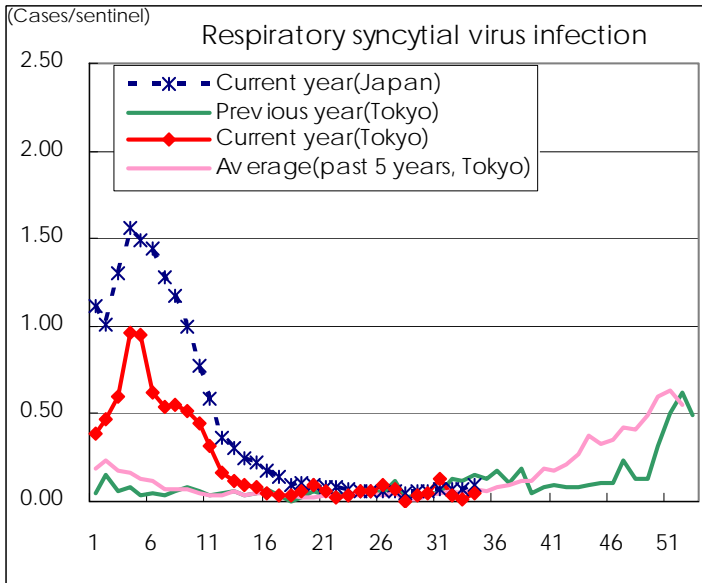
Category	Diseases	Tokyo					Japan	
		31st	32nd	33rd	34th	Cum 2010	34th	Cum 2010
V	Amebiasis	4	6	3	3	111	9	538
	Viral hepatitis(excluding hepatitis A and E)	2		1	1	28	1	129
	Acute encephalitis(excluding JE and WNE)					12	2	159
	Cryptosporidiosis					3		10
	Creutzfeldt-Jakob disease					10		105
	Severe invasive streptococcal infections(TSLS)		1			14		85
	Acquired immunodeficiency syndrome (AIDS)	6	9	6	5	306	16	954
	Giardiasis					9	1	49
	Meningococcal meningitis						1	6
	Congenital rubella syndrome							
	Syphilis	6		4	4	110	8	395
	Tetanus				1	3	1	64
	Vancomycin-resistant S. aureus infection							
	Vancomycin-resistant Enterococcus infection					11		69
	Rubella					10		67
Measles	1		3	1	59	6	360	
Novel Flu	Novel influenza (swine-origin influenza A/H1N1)	—	—	—	—		—	

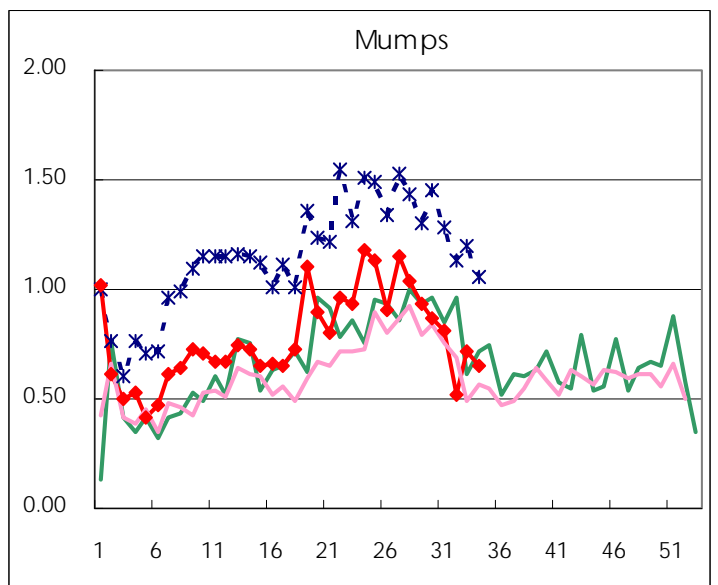
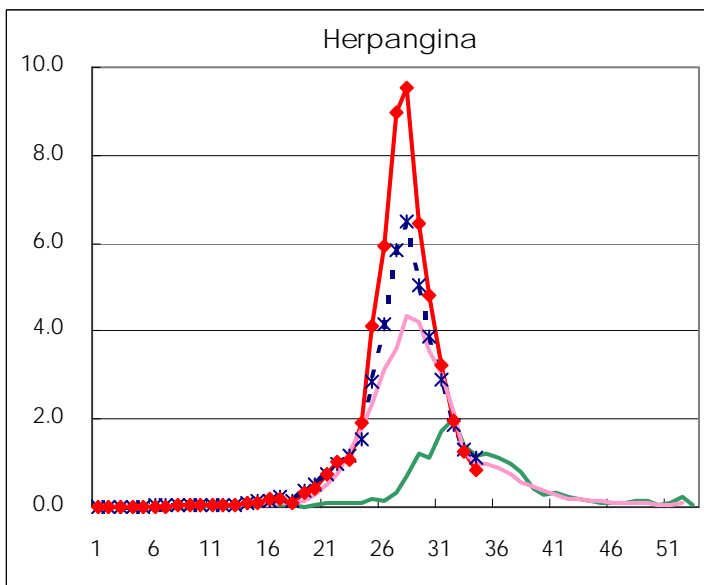
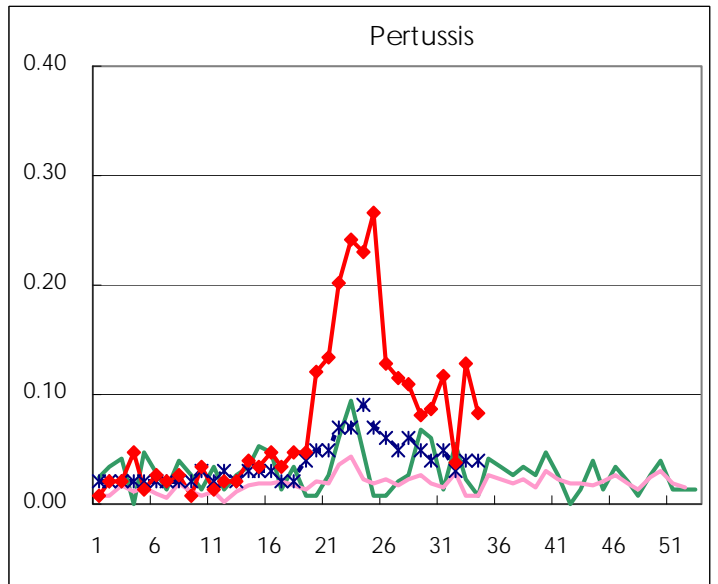
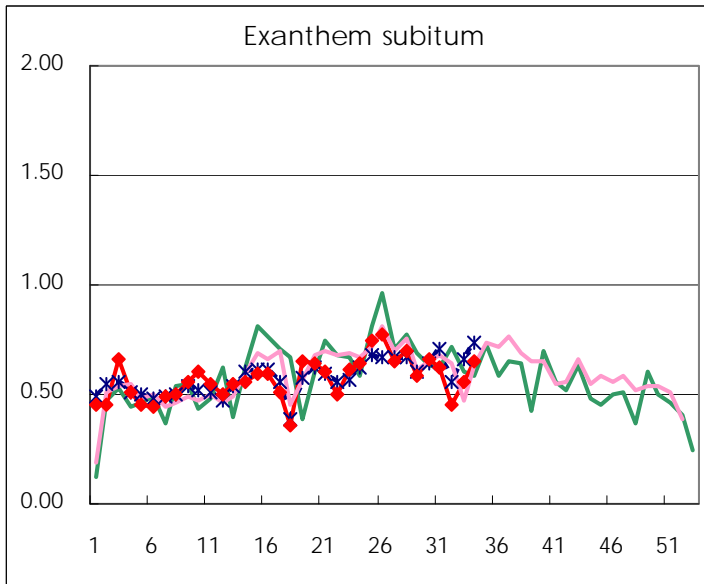
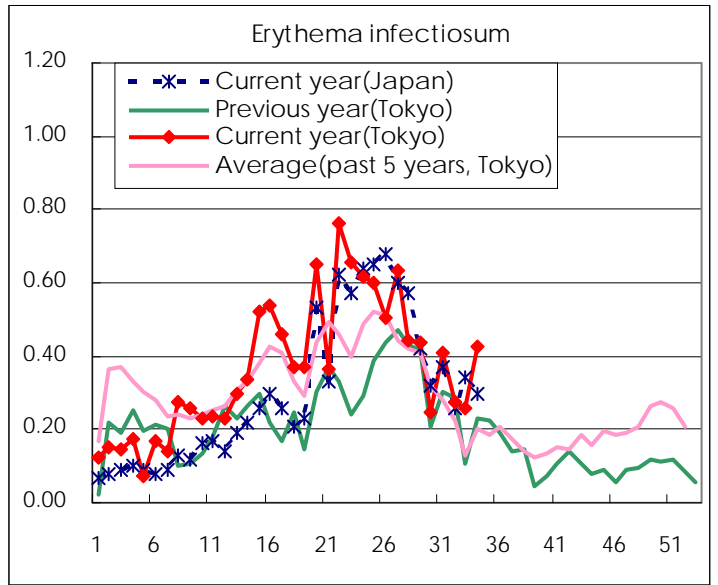
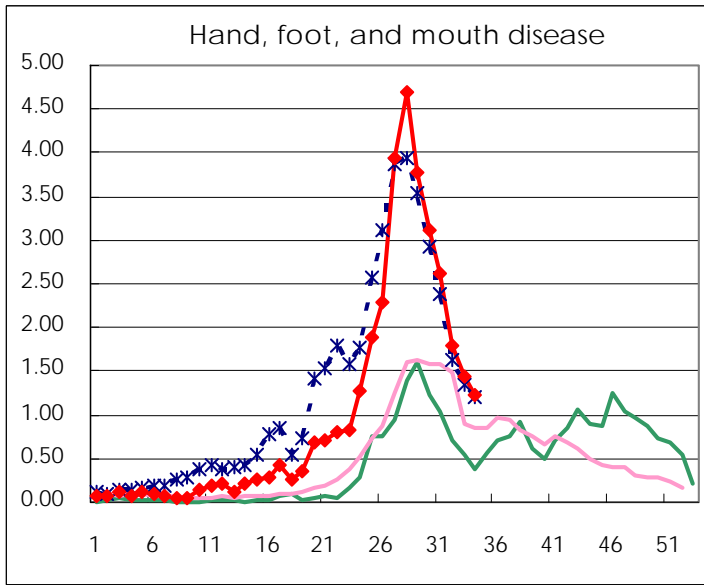
Number of patients with the diseases to be reported
by the designated clinics and hospitals

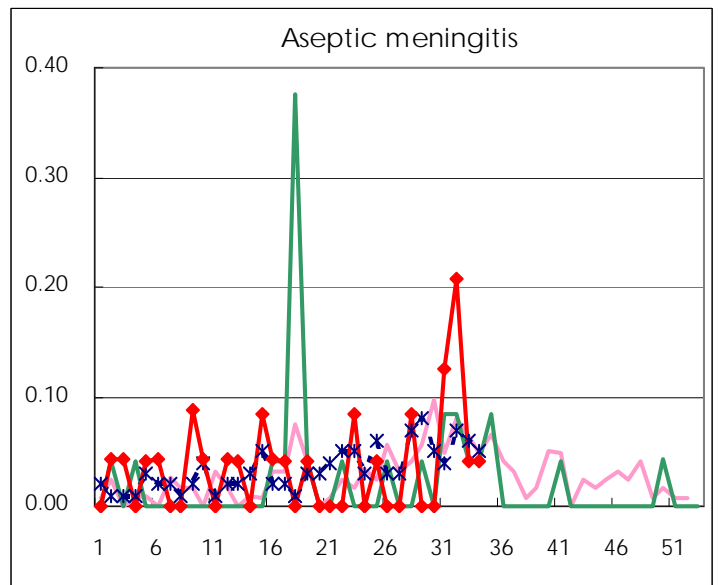
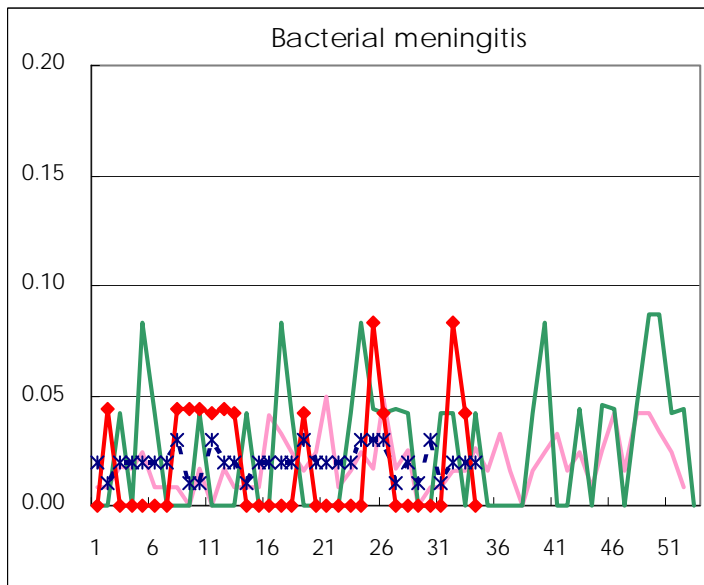
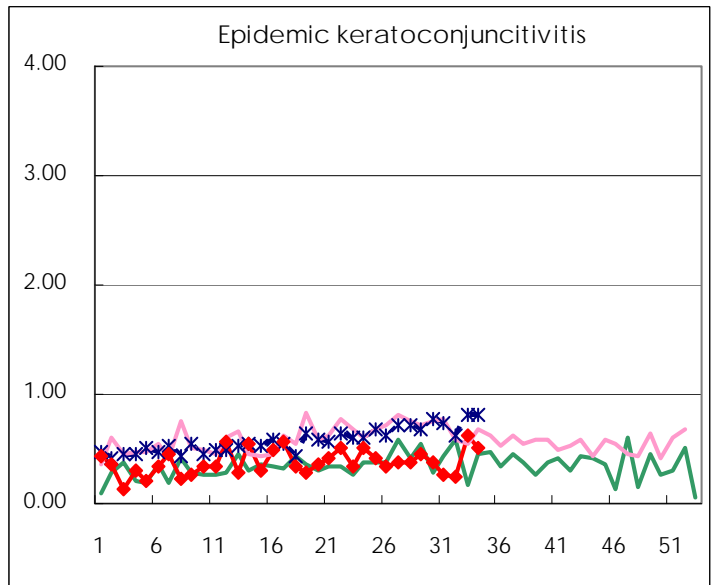
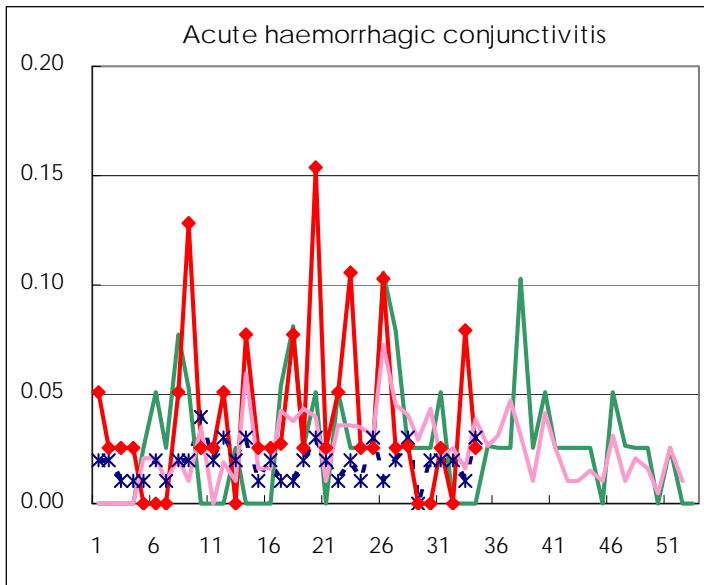
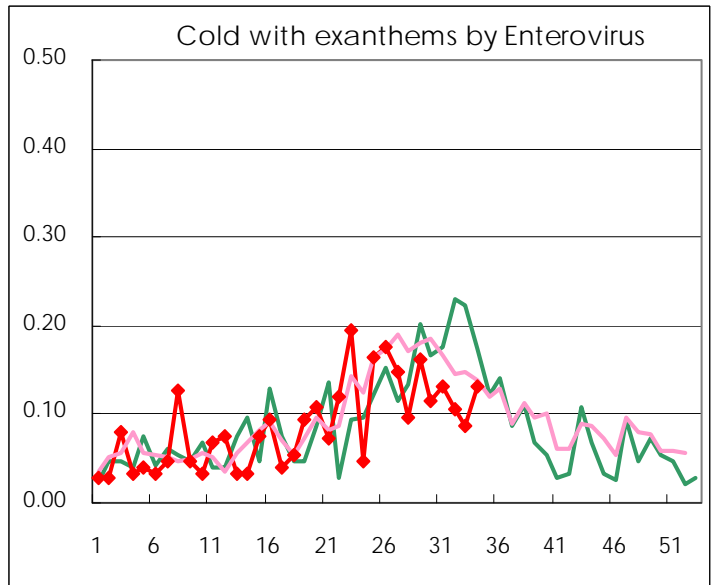
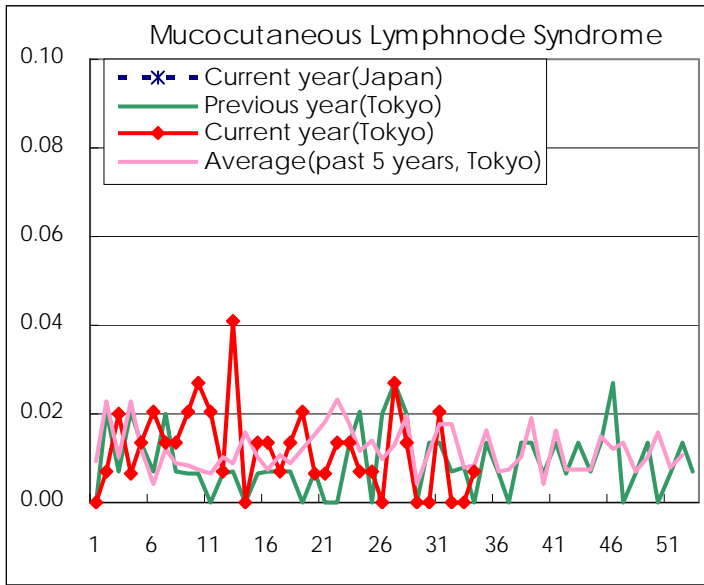
Diseases	2010				
	31st	32nd	33rd	34th	/sentinel
Respiratory syncytial virus infection	18	5	2	7	0.05
Pharyngoconjunctival fever	30	32	30	37	0.26
Group A streptococcal pharyngitis	106	63	60	69	0.48
Infectious gastroenteritis	415	336	339	465	3.23
Chickenpox	67	45	68	66	0.46
Hand, foot, and mouth disease	379	236	213	175	1.22
Erythema infectiosum	59	36	38	61	0.42
Exanthem subitum	90	60	83	94	0.65
Pertussis	17	5	19	12	0.08
Herpangina	467	260	185	121	0.84
Mumps	118	69	106	94	0.65
Cold with exanthems by Enterovirus	19	14	13	19	0.13
Mucocutaneous Lymphnode Syndrome	3			1	0.01
Influenza	14	4	5	7	0.03
Acute hemorrhagic conjunctivitis	1		3	1	0.03
Epidemic keratoconjunctivitis	10	9	24	20	0.51
Bacterial meningitis		2	1		
Aseptic meningitis	3	5	1	1	0.04
Mycoplasma pneumonia	11	5	6	4	0.17
Chlamydial pneumonia (excluding psittacosis)					

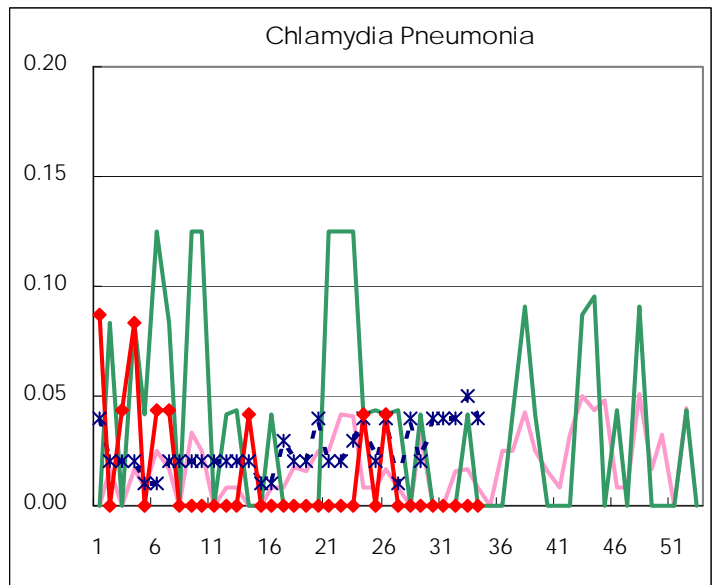
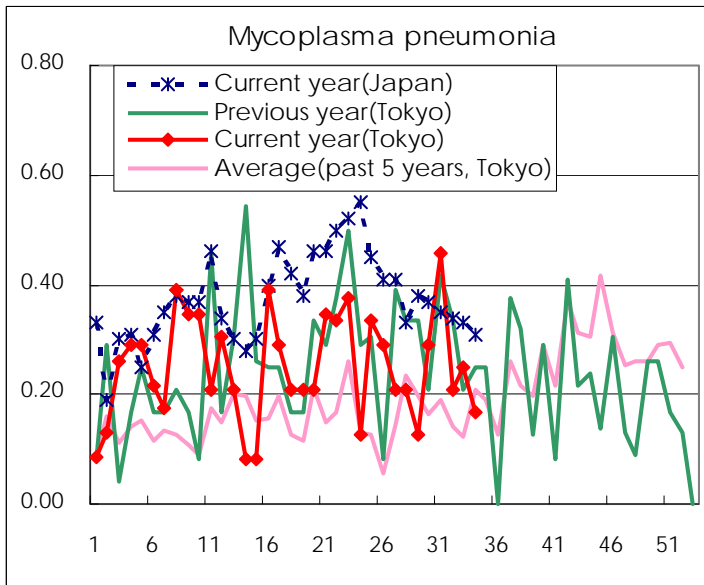
(Blank means 0.)

Disease Trend Graph (weekly reported cases per sentinel in comparison)









Number of sentinel facilities for weekly reporting		
Types of sentinels	Number of sentinels	Sentinels having reported
Pediatric	150	144
Influenza	290	277
Ophthalmic	39	39
Specially-designated	25	24

Tokyo Metropolitan Government
Infectious Disease Surveillance Center