

---

INFECTIOUS DISEASES WEEKLY REPORT

# TOKYO IDWR

Tokyo Metropolitan Infectious Disease Surveillance Center

## 9 September 2010 / Number 35

### Surveillance System in Tokyo, Japan

#### The infectious diseases which all physicians must report

All physicians must report to health centers the incidence of the diseases which are shown at page one. Health centers electronically report the individual cases to Tokyo Metropolitan Infectious Disease Surveillance Center.

#### The infectious diseases required to be reported by the sentinels

The numbers of patients who visit the sentinel clinics or hospitals during a week are reported to health centers in Tokyo. And they electronically report the numbers to Tokyo Metropolitan Infectious Disease Surveillance Center. We have about 400 sentinel clinics and hospitals in Tokyo.

1st Week is early January and 52nd Week is end of December.

Tokyo Metropolitan Institute of Public Health  
Epidemiological Information Office

TEL:81-3-3363-3213 FAX:81-3-5332-7365

e-mail:[idsc@tokyo-eiken.go.jp](mailto:idsc@tokyo-eiken.go.jp)

URL:[idsc.tokyo-eiken.go.jp/](http://idsc.tokyo-eiken.go.jp/)

---

## Number of patients with the diseases which all physicians must report

Category	Diseases	Tokyo				Japan		
		32nd	33rd	34th	35th	Cum 2010	35th	Cum 2010
I	Ebola hemorrhagic fever							
	Crimean-Congo hemorrhagic fever							
	Smallpox							
	South American hemorrhagic fever							
	Plague							
	Marburg disease							
	Lassa fever							
II	Acute poliomyelitis							1
	Tuberculosis	63	70	42	54	2,726	368	16,967
	Diphtheria							
	Severe Acute Respiratory Syndrome(SARS)							
Avian influenza H5N1								
III	Cholera				1	2	1	7
	Shigellosis	1	2	1	2	51	5	126
	Enterohemorrhagic Escherichia coli infection	18	25	21	16	236	161	2,805
	Typhoid fever		1		1	7	1	22
	Paratyphoid fever					3	1	15
IV	Hepatitis E	1				7		47
	West Nile fever							
	Hepatitis A		1	1	1	38	2	298
	Echinococcosis							6
	Yellow fever							
	Psittacosis							9
	Omsk hemorrhagic fever							
	Relapsing fever							
	Kyasanur forest disease							
	Q fever							1
	Rabies							
	Coccidioidomycosis							
	Monkeypox							
	Hemorrhagic fever with renal syndrome							
	Western equine encephalitis							
	Tick-borne encephalitis							
	Anthrax							
	Scrub typhus(Tsutsugamushi disease)					5		111
	Dengue fever	2	2	3	5	35	11	137
	Eastern equine encephalitis							
	Avian influenza (excluding H5N1)							
	Nipah virus infection							
	Japanese spotted fever					1	1	56
	Japanese encephalitis							
	Epidemic typhus							
	Hantavirus pulmonary syndrome							
	Herpes B virus infection							
	Glanders							
	Brucellosis							2
	Venezuelan equine encephalitis							
Hendra virus infection								
Botulism								
Malaria	3	2	1		19	3	50	
Tularemia								
Lyme disease					1		8	
Lyssavirus infection(excluding rabies)								
Rift valley fever								
Melioidosis					1		2	
Legionellosis	1	1			26	8	473	
Leptospirosis					2		6	
Rocky mountain spotted fever								

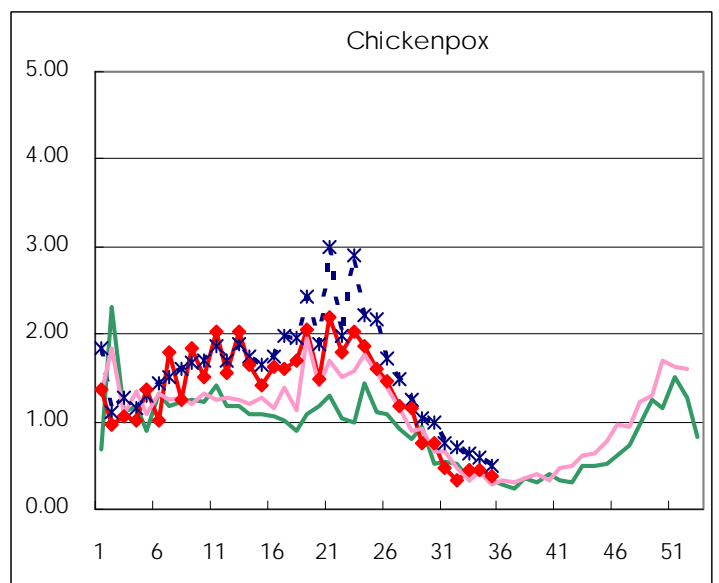
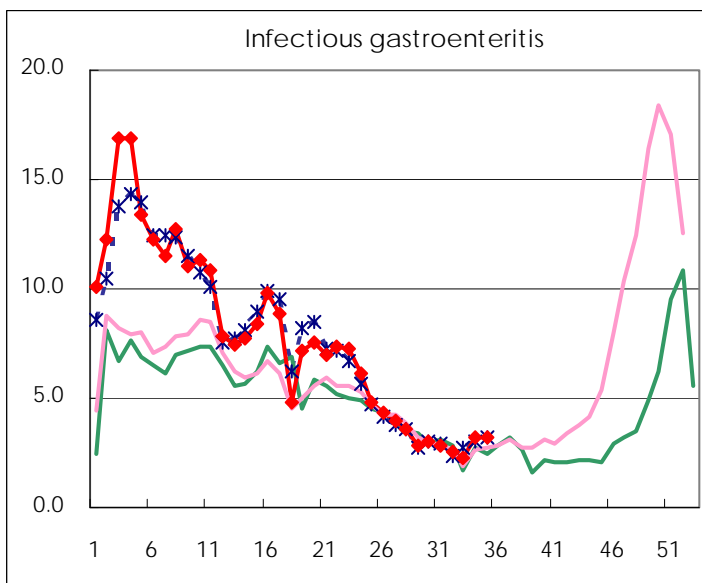
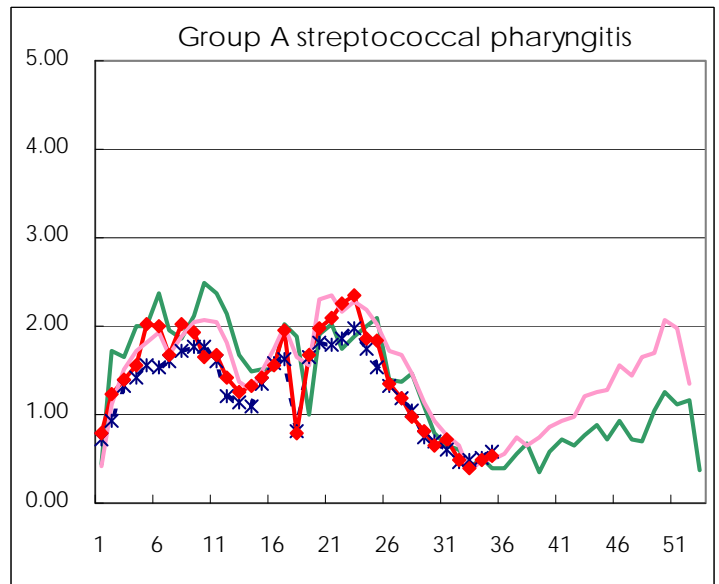
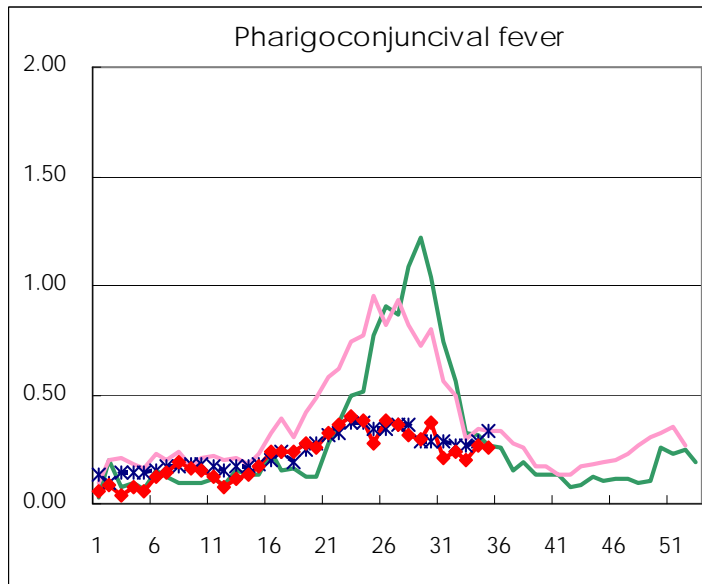
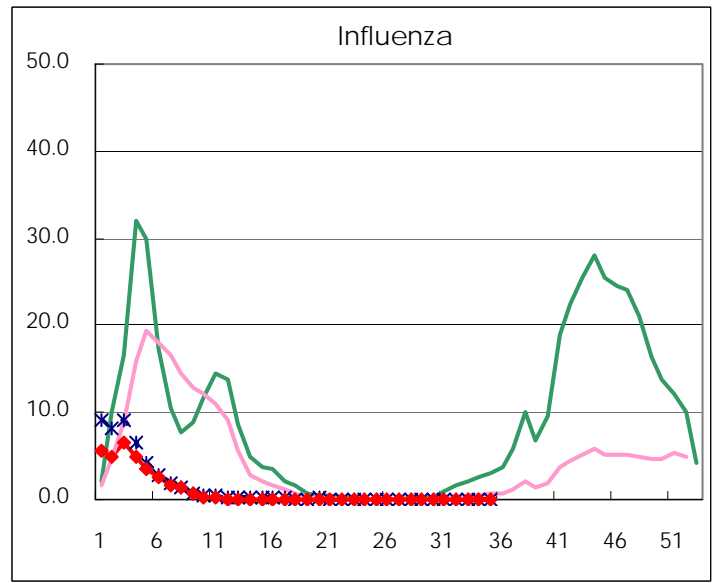
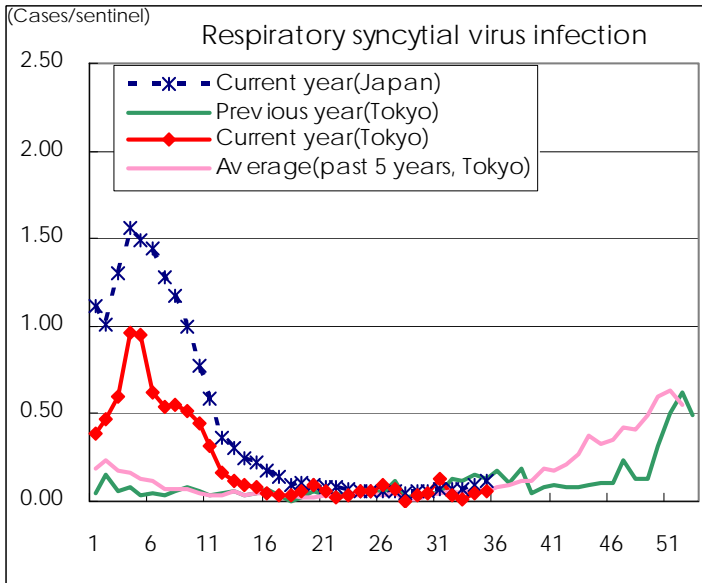
Category	Diseases	Tokyo					Japan	
		32nd	33rd	34th	35th	Cum 2010	35th	Cum 2010
V	Amebiasis	6	3	3	5	116	16	560
	Viral hepatitis(excluding hepatitis A and E)		1	1		28	1	132
	Acute encephalitis(excluding JE and WNE)					12	4	165
	Cryptosporidiosis					3		11
	Creutzfeldt-Jakob disease					10	1	107
	Severe invasive streptococcal infections(TSLS)	1				14		85
	Acquired immunodeficiency syndrome (AIDS)	9	6	5	10	316	8	969
	Giardiasis					9	1	50
	Meningococcal meningitis							6
	Congenital rubella syndrome							
	Syphilis		4	4	1	111	3	399
	Tetanus			1		3	3	71
	Vancomycin-resistant S. aureus infection							
	Vancomycin-resistant Enterococcus infection					11	2	72
	Rubella				1	11	2	70
Measles		3	1	1	60	6	368	
Novel Flu	Novel influenza (swine-origin influenza A/H1N1)	—	—	—	—		—	

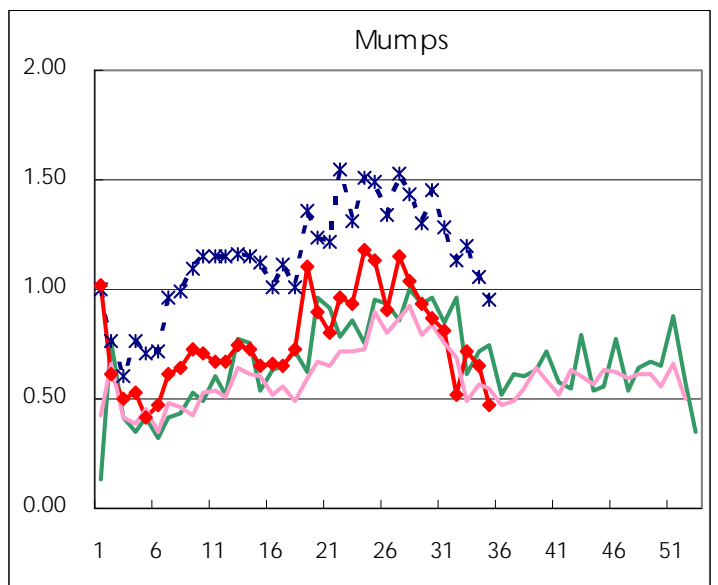
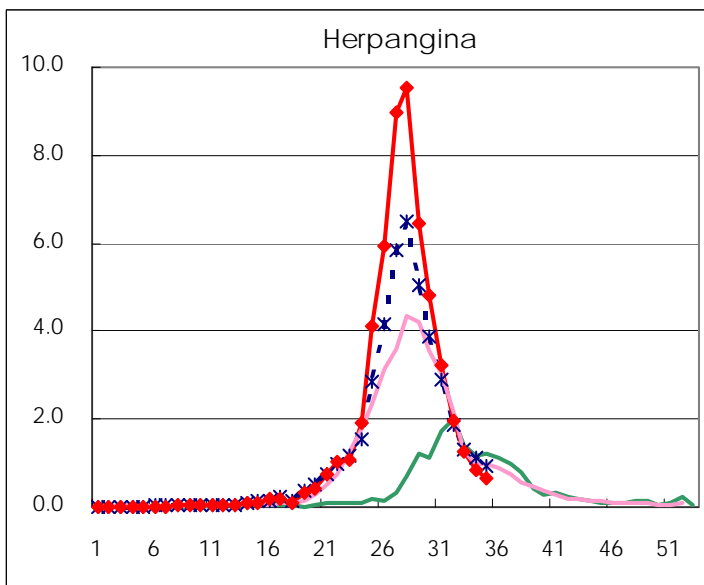
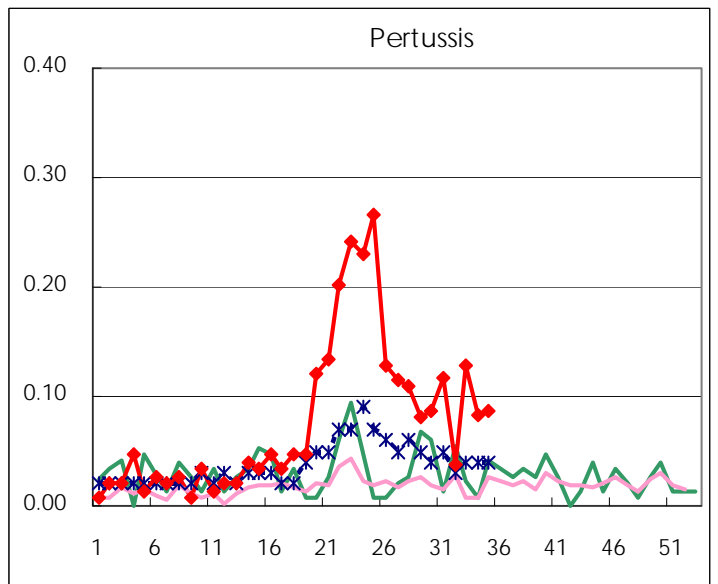
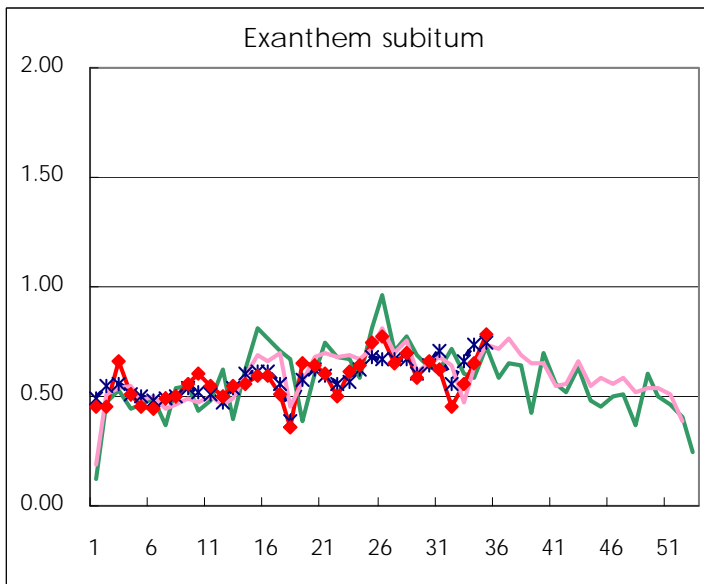
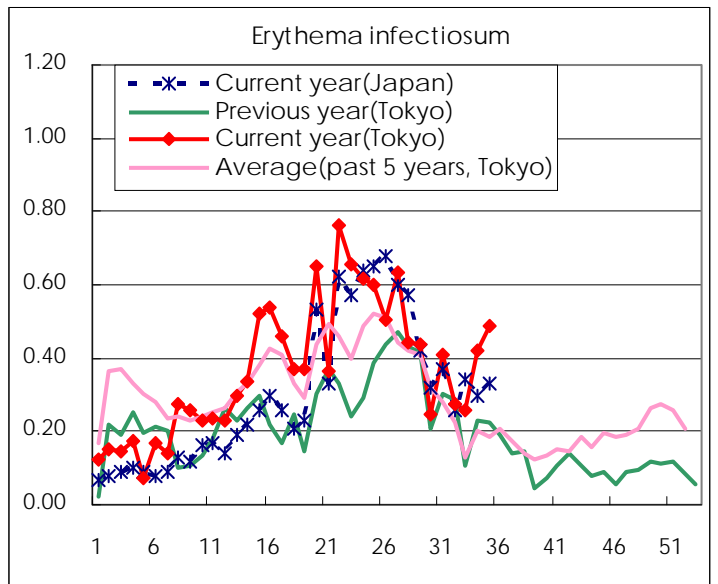
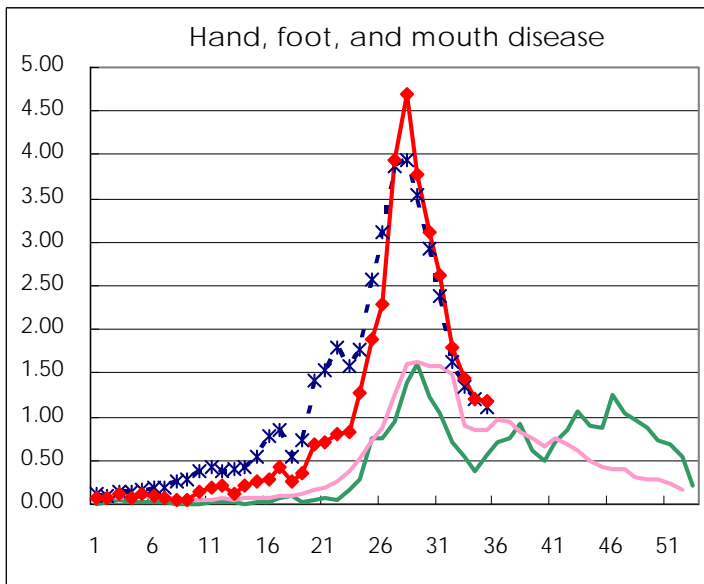
Number of patients with the diseases to be reported  
by the designated clinics and hospitals

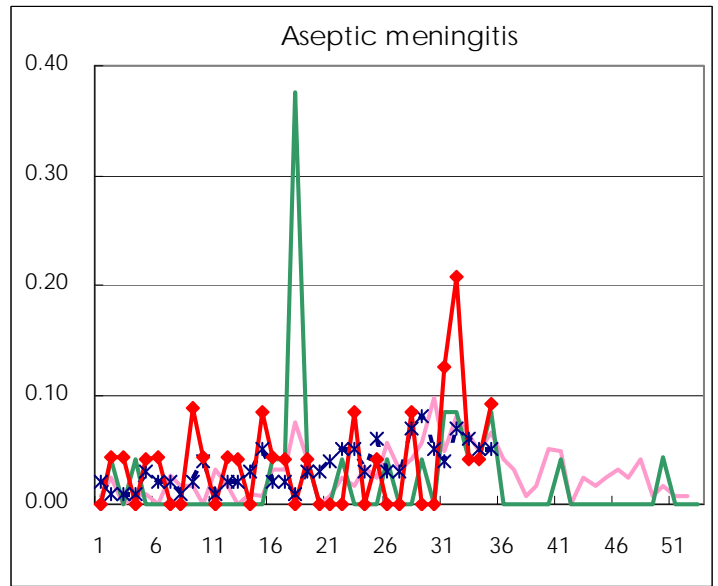
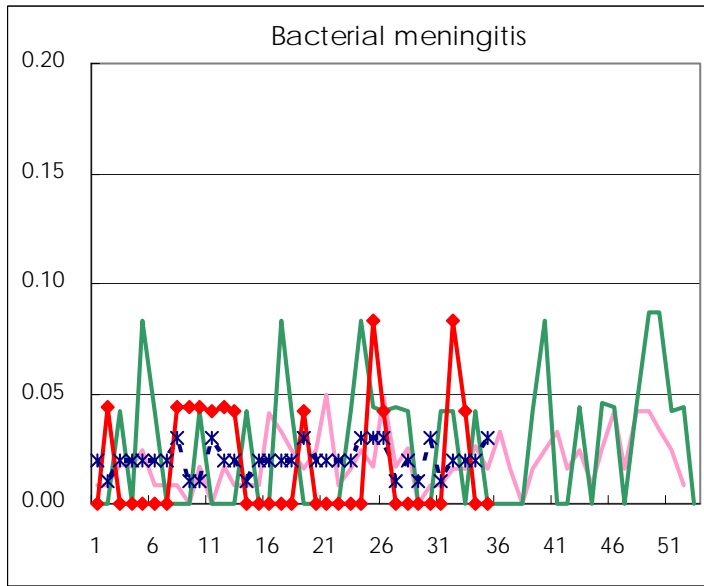
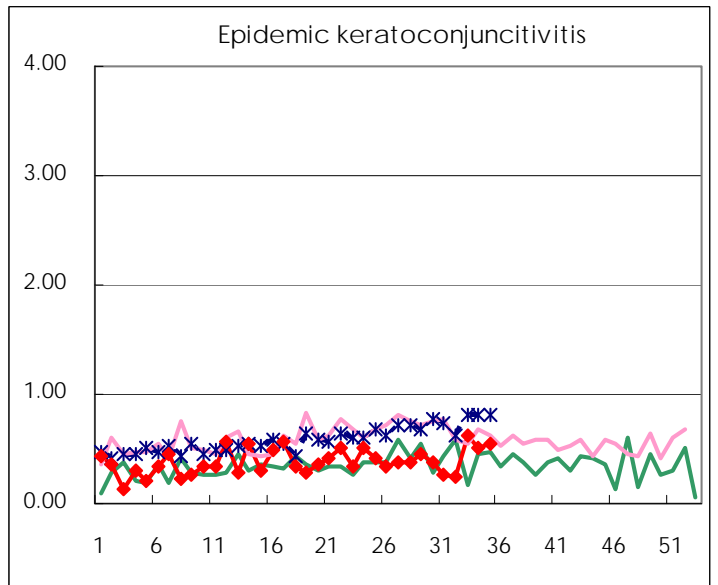
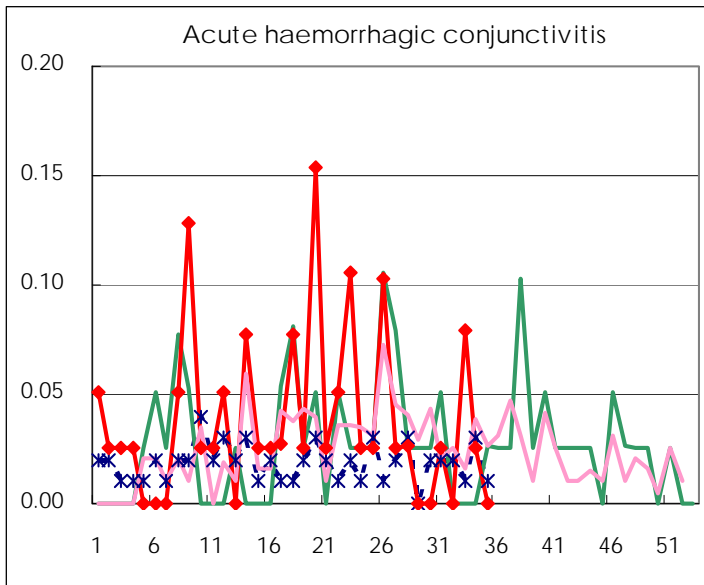
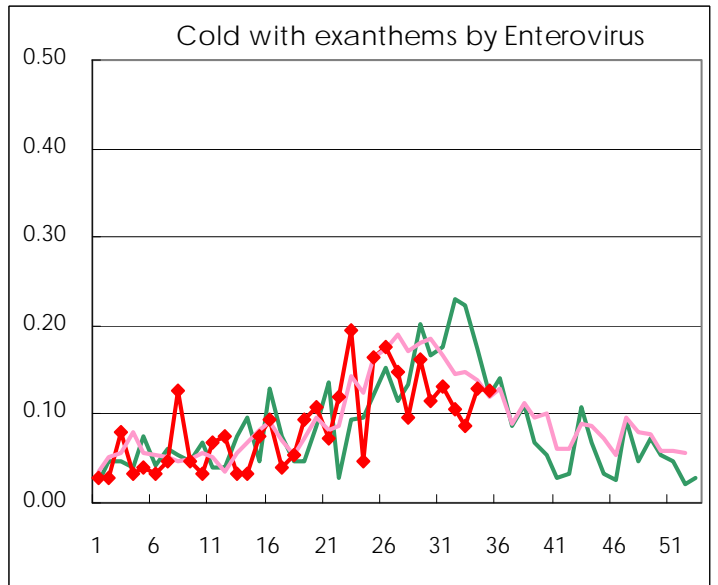
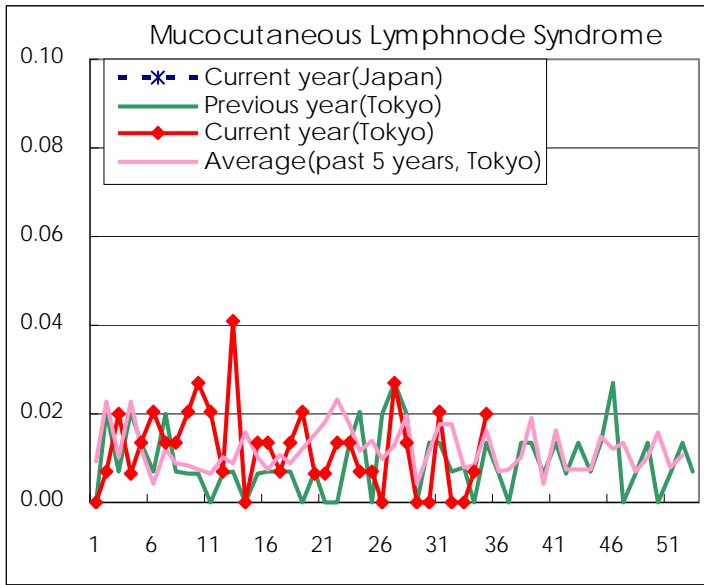
Diseases	2010				
	32nd	33rd	34th	35th	/sentinel
Respiratory syncytial virus infection	5	2	7	9	0.06
Pharyngoconjunctival fever	32	30	39	38	0.26
Group A streptococcal pharyngitis	63	60	70	79	0.53
Infectious gastroenteritis	336	339	465	479	3.21
Chickenpox	45	68	66	55	0.37
Hand, foot, and mouth disease	236	213	176	174	1.17
Erythema infectiosum	36	38	61	73	0.49
Exanthem subitum	60	83	95	117	0.79
Pertussis	5	19	12	13	0.09
Herpangina	260	185	123	100	0.67
Mumps	69	106	95	70	0.47
Cold with exanthems by Enterovirus	14	13	19	19	0.13
Mucocutaneous Lymphnode Syndrome			1	3	0.02
Influenza	4	5	7	17	0.06
Acute hemorrhagic conjunctivitis		3	1		
Epidemic keratoconjunctivitis	9	24	20	21	0.54
Bacterial meningitis	2	1			
Aseptic meningitis	5	1	1	2	0.09
Mycoplasma pneumonia	5	6	4	6	0.27
Chlamydial pneumonia (excluding psittacosis)				1	0.05

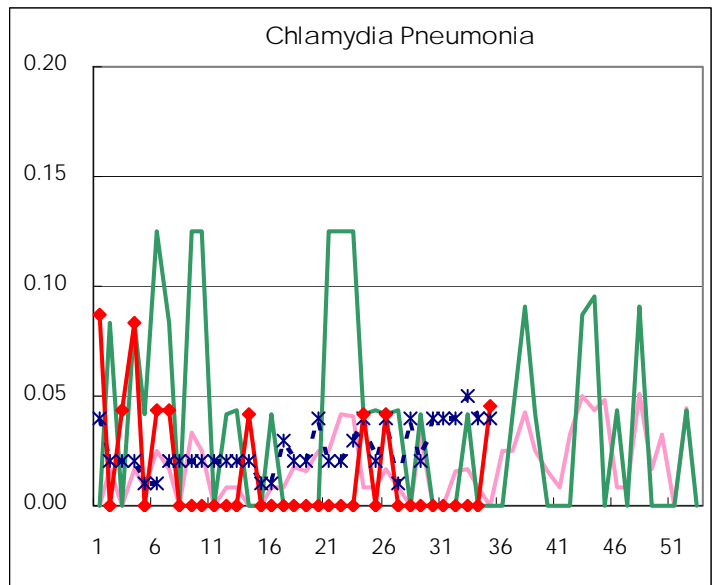
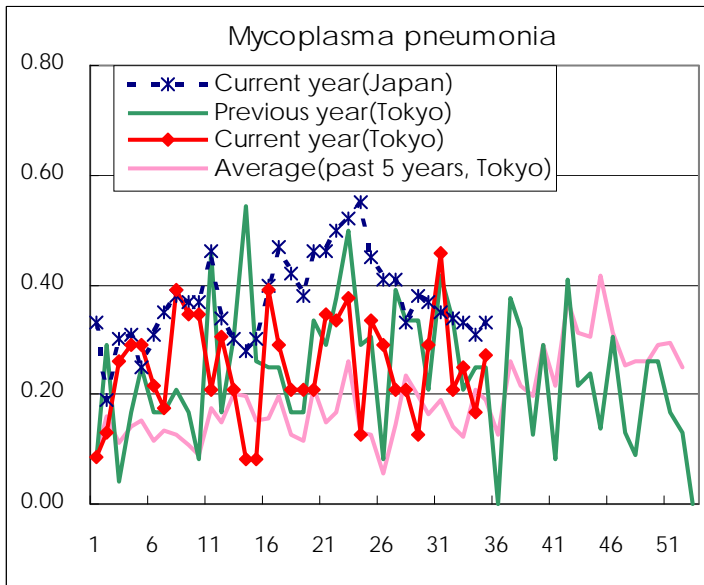
( Blank means 0. )

# Disease Trend Graph (weekly reported cases per sentinel in comparison)









Number of sentinel facilities for weekly reporting		
Types of sentinels	Number of sentinels	Sentinels having reported
Pediatric	150	149
Influenza	290	286
Ophthalmic	39	39
Specially-designated	25	22

Tokyo Metropolitan Government  
**Infectious Disease Surveillance Center**