

---

INFECTIOUS DISEASES WEEKLY REPORT

# TOKYO IDWR

Tokyo Metropolitan Infectious Disease Surveillance Center

## 16 September 2010 / Number 36

### Surveillance System in Tokyo, Japan

The infectious diseases which all physicians must report

All physicians must report to health centers the incidence of the diseases which are shown at page one. Health centers electronically report the individual cases to Tokyo Metropolitan Infectious Disease Surveillance Center.

The infectious diseases required to be reported by the sentinels

The numbers of patients who visit the sentinel clinics or hospitals during a week are reported to health centers in Tokyo. And they electronically report the numbers to Tokyo Metropolitan Infectious Disease Surveillance Center. We have about 400 sentinel clinics and hospitals in Tokyo.

1st Week is early January and 52nd Week is end of December.

Tokyo Metropolitan Institute of Public Health  
Epidemiological Information Office

TEL:81-3-3363-3213 FAX:81-3-5332-7365

e-mail:[idsc@tokyo-eiken.go.jp](mailto:idsc@tokyo-eiken.go.jp)

URL:[idsc.tokyo-eiken.go.jp/](http://idsc.tokyo-eiken.go.jp/)

---

## Number of patients with the diseases which all physicians must report

Category	Diseases	Tokyo				Japan		
		33rd	34th	35th	36th	Cum 2010	36th	Cum 2010
I	Ebola hemorrhagic fever							
	Crimean-Congo hemorrhagic fever							
	Smallpox							
	South American hemorrhagic fever							
	Plague							
	Marburg disease							
	Lassa fever							
II	Acute poliomyelitis							1
	Tuberculosis	78	47	68	34	2,794	350	17,565
	Diphtheria							
	Severe Acute Respiratory Syndrome(SARS)							
	Avian influenza H5N1							
III	Cholera			1		2		7
	Shigellosis	2	1	2	2	53	4	131
	Enterohemorrhagic Escherichia coli infection	25	21	16	19	255	190	3,028
	Typhoid fever	1		1		7	1	23
	Paratyphoid fever				1	4	4	19
IV	Hepatitis E					7		46
	West Nile fever							
	Hepatitis A	1	1	1		38	2	300
	Echinococcosis							7
	Yellow fever							
	Psittacosis							9
	Omsk hemorrhagic fever							
	Relapsing fever							
	Kyasanur forest disease							
	Q fever							1
	Rabies							
	Coccidioidomycosis							
	Monkeypox							
	Hemorrhagic fever with renal syndrome							
	Western equine encephalitis							
	Tick-borne encephalitis							
	Anthrax							
	Scrub typhus(Tsutsugamushi disease)					5	1	112
	Dengue fever	2	3	5	3	38	6	145
	Eastern equine encephalitis							
	Avian influenza (excluding H5N1)							
	Nipah virus infection							
	Japanese spotted fever					1	4	61
	Japanese encephalitis						1	1
	Epidemic typhus							
	Hantavirus pulmonary syndrome							
	Herpes B virus infection							
	Glanders							
	Brucellosis							2
	Venezuelan equine encephalitis							
	Hendra virus infection							
Botulism								
Malaria	2	1		2	21	1	51	
Tularemia								
Lyme disease					1	1	9	
Lyssavirus infection(excluding rabies)								
Rift valley fever								
Melioidosis					1		2	
Legionellosis	1			1	27	17	495	
Leptospirosis					2		6	
Rocky mountain spotted fever								

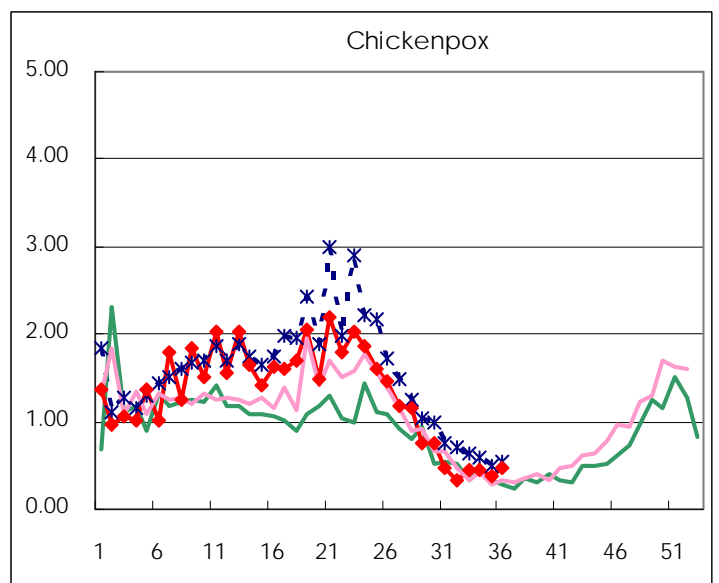
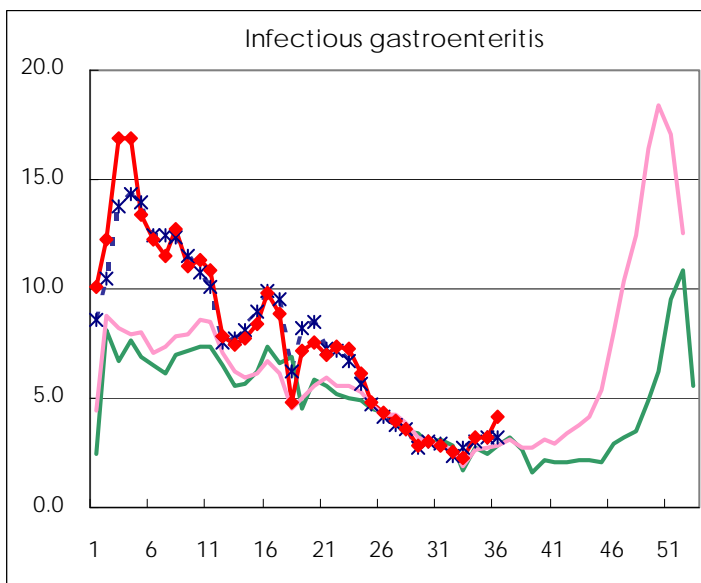
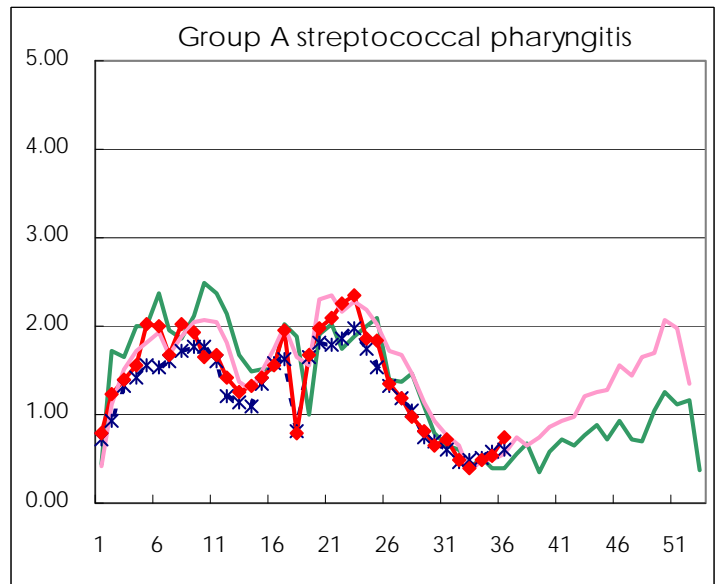
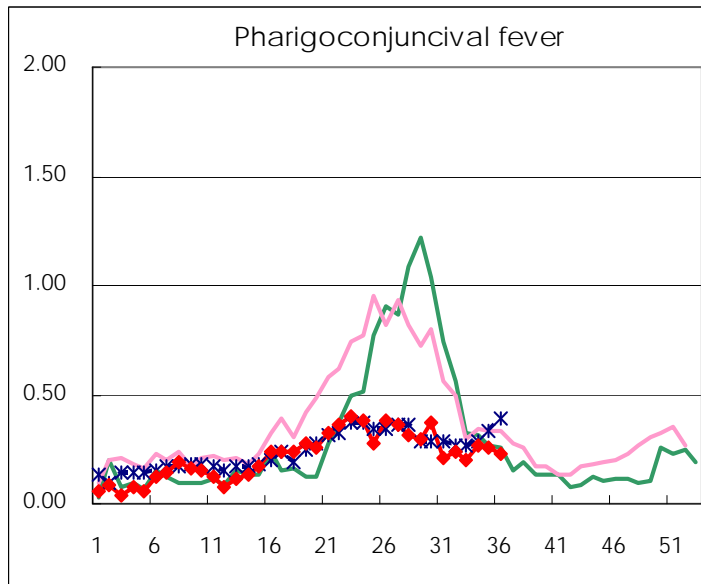
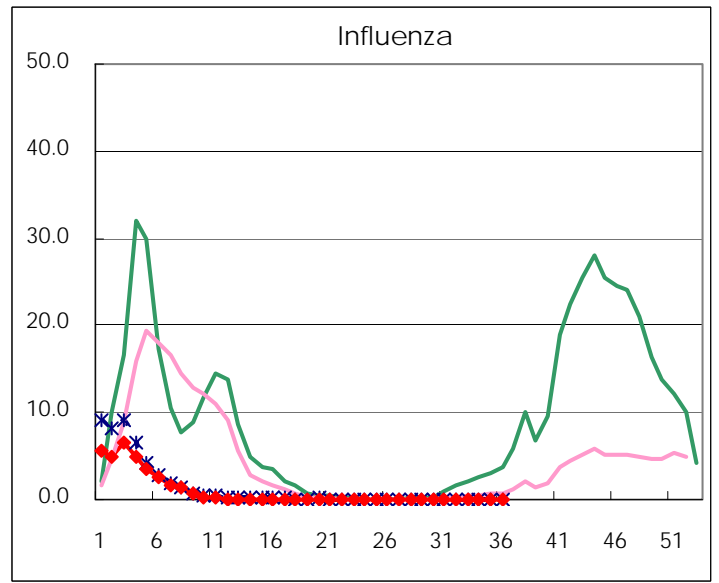
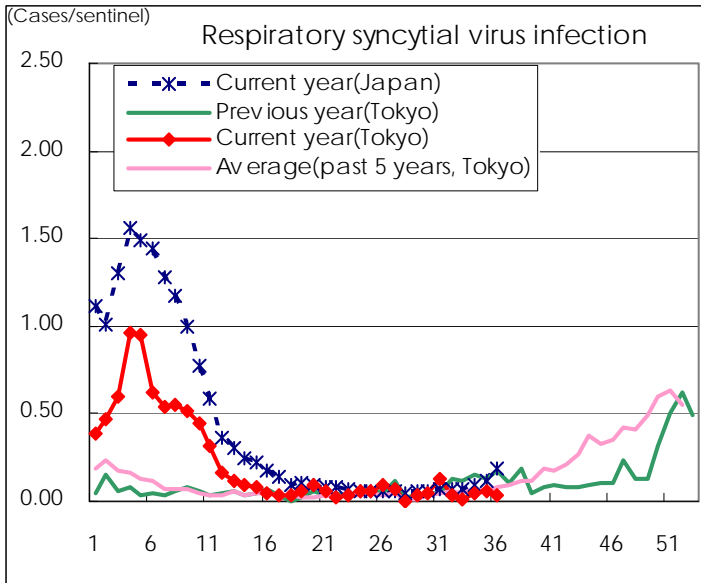
Category	Diseases	Tokyo				Japan		
		33rd	34th	35th	36th	Cum 2010	36th	Cum 2010
V	Amebiasis	3	3	5	4	120	15	583
	Viral hepatitis(excluding hepatitis A and E)	1	1		1	29	2	137
	Acute encephalitis(excluding JE and WNE)					12	1	167
	Cryptosporidiosis					3	4	15
	Creutzfeldt-Jakob disease					10	3	112
	Severe invasive streptococcal infections(TSLS)					14	1	87
	Acquired immunodeficiency syndrome (AIDS)	6	5	10	8	324	11	1,002
	Giardiasis					9		52
	Meningococcal meningitis							6
	Congenital rubella syndrome							
	Syphilis	4	4	1	3	114	7	412
	Tetanus		1			3	1	71
	Vancomycin-resistant S. aureus infection							
	Vancomycin-resistant Enterococcus infection					11	1	74
	Rubella			1		11		70
Measles	3	1	1	1	61	7	377	
Novel Flu	Novel influenza (pandemic A/H1N1 2009)	—	—	—	—		—	

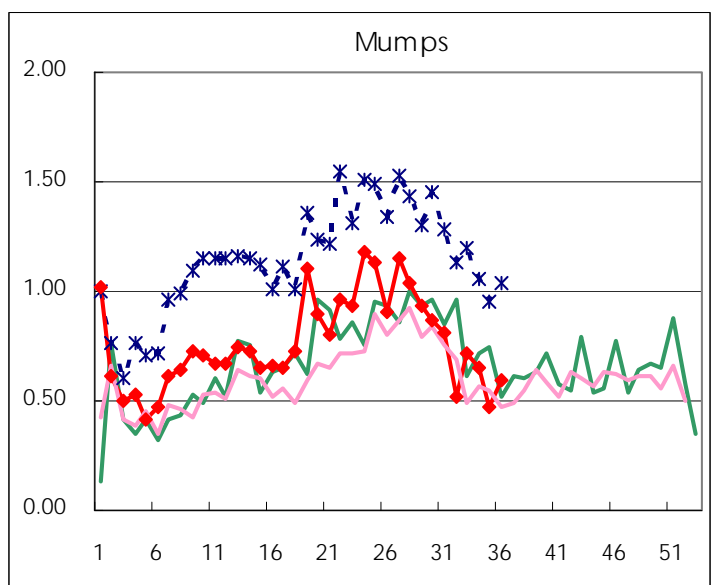
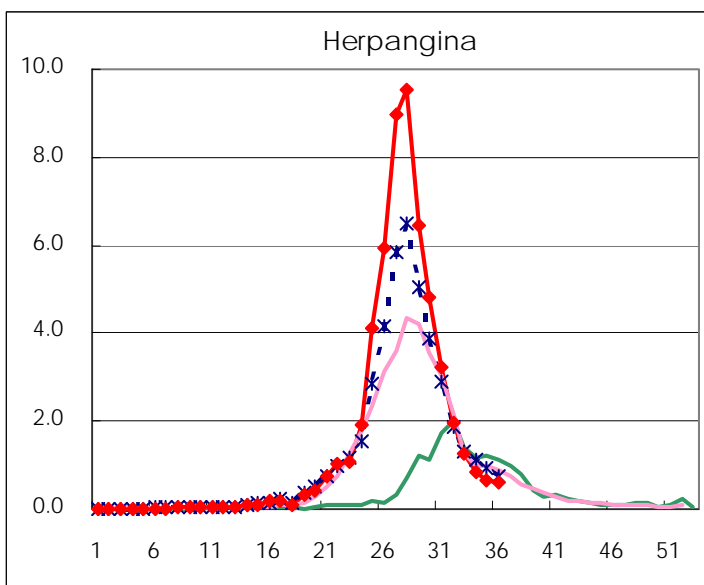
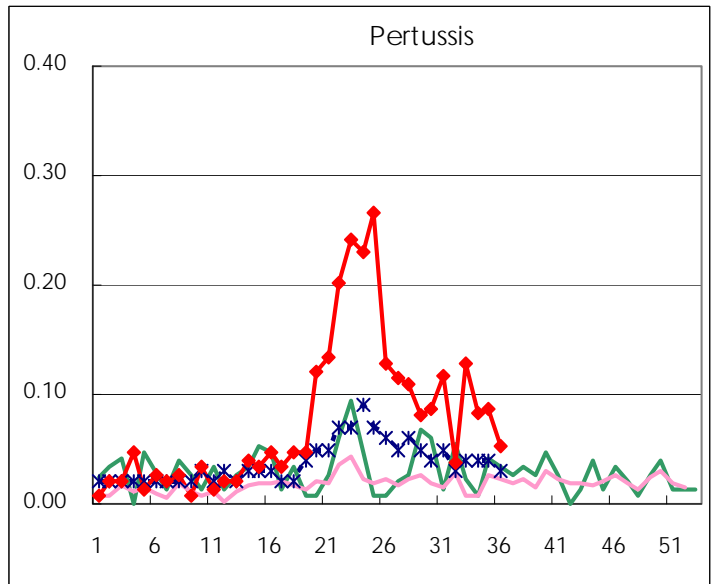
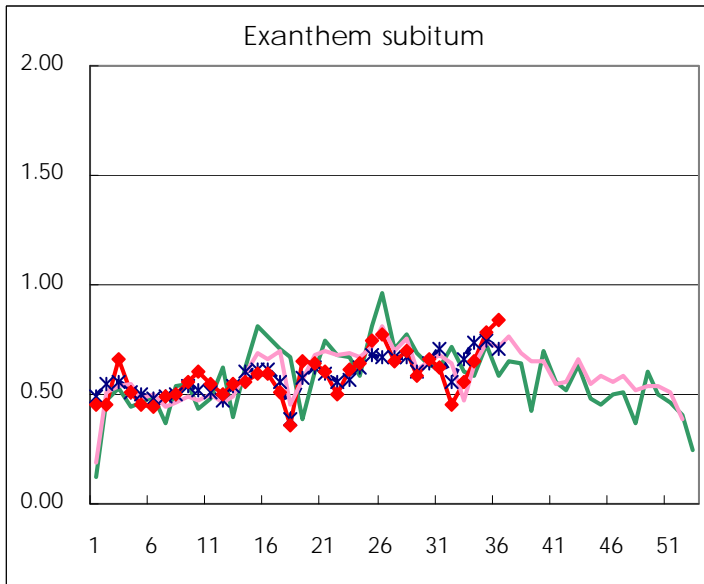
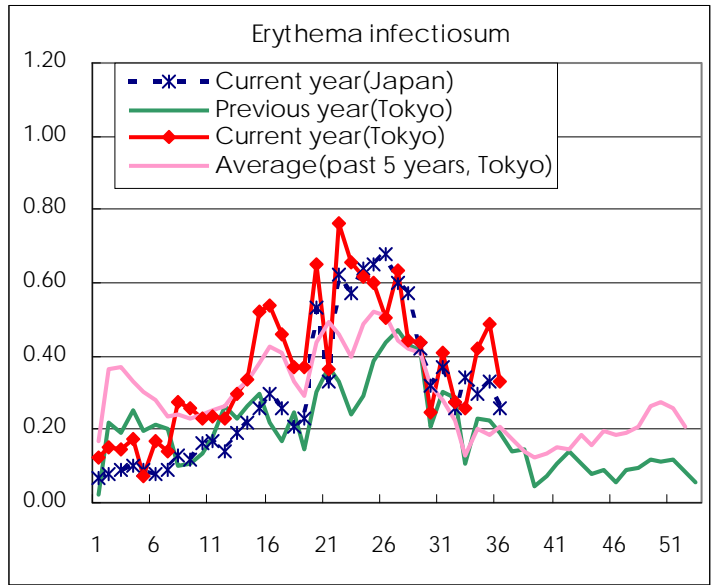
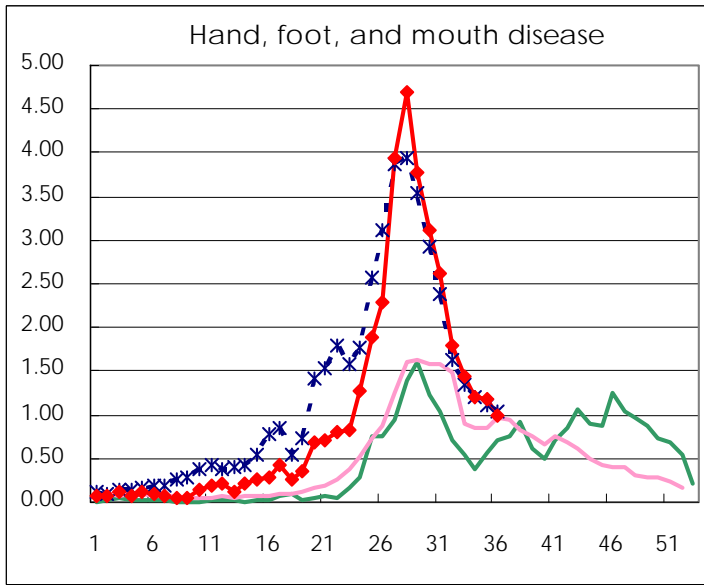
Number of patients with the diseases to be reported  
by the designated clinics and hospitals

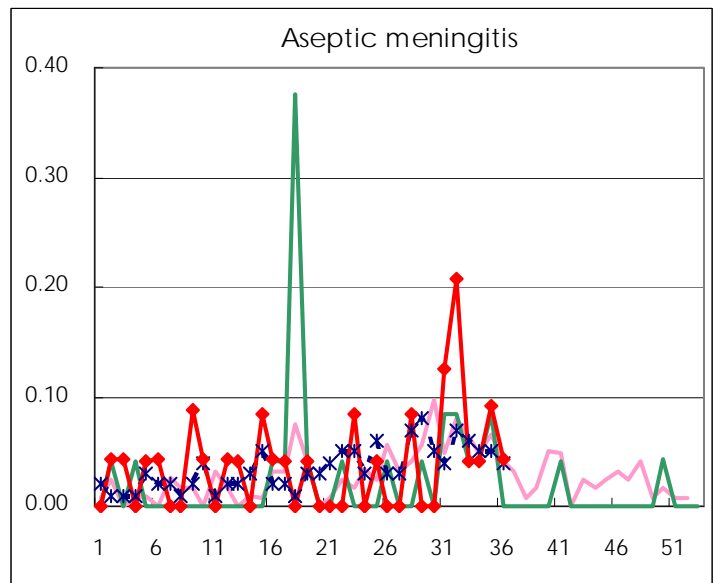
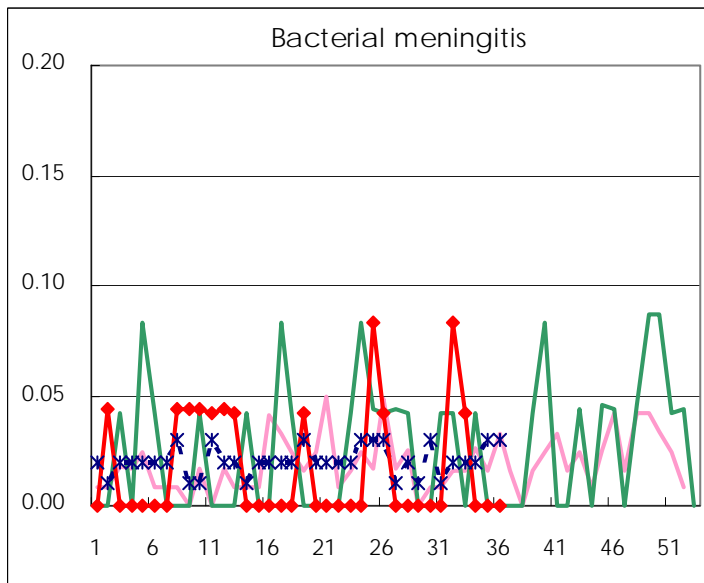
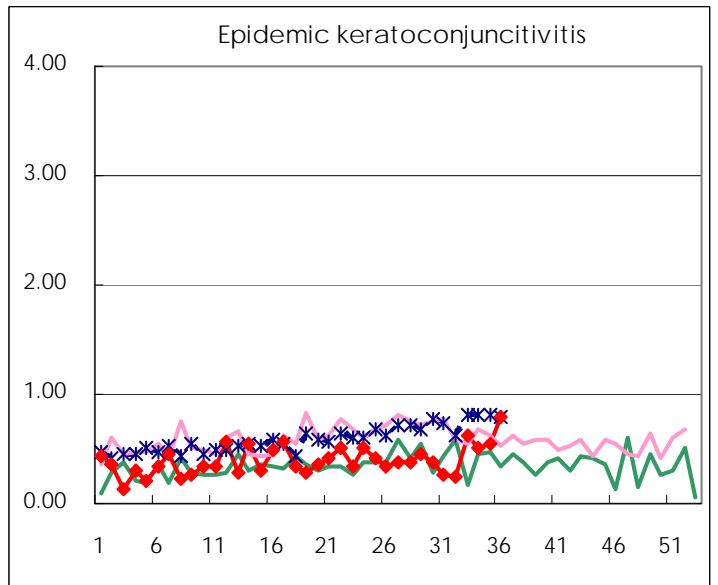
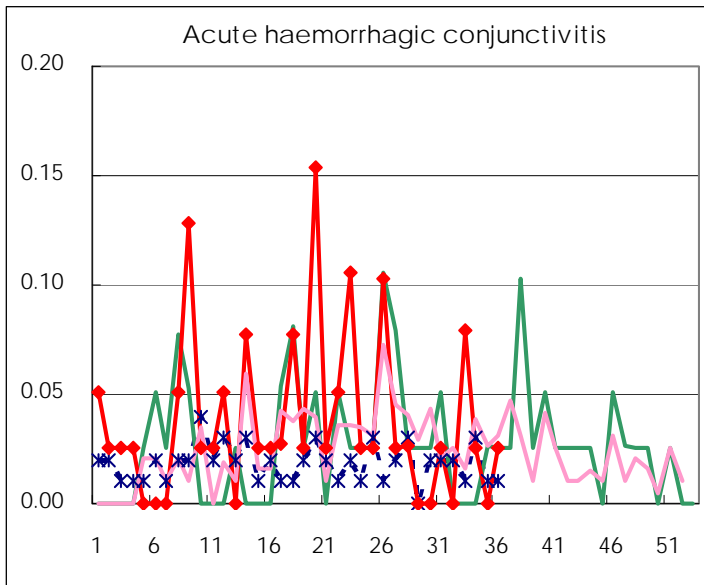
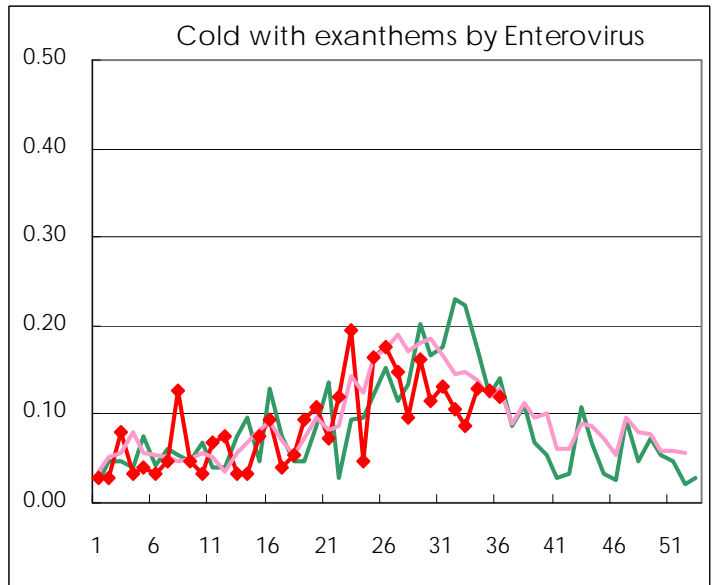
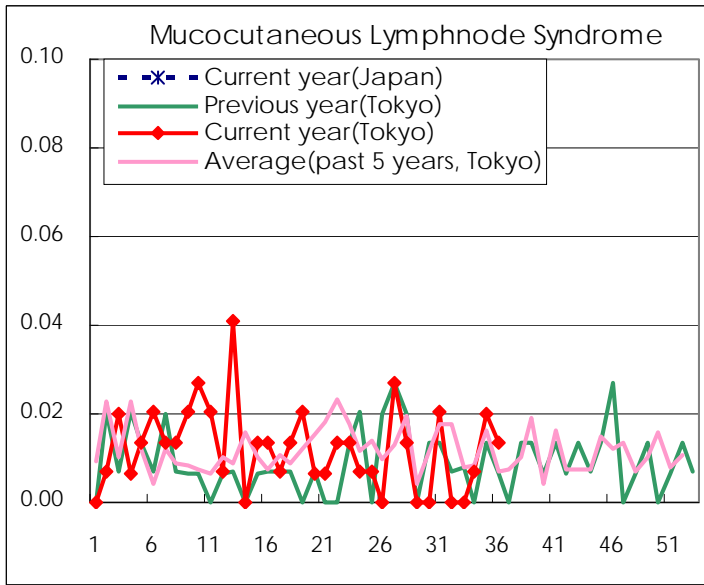
Diseases	2010				
	33rd	34th	35th	36th	/sentinel
Respiratory syncytial virus infection	2	7	9	6	0.04
Pharyngoconjunctival fever	30	39	38	34	0.23
Group A streptococcal pharyngitis	60	70	79	111	0.74
Infectious gastroenteritis	339	465	479	614	4.12
Chickenpox	68	66	55	69	0.46
Hand, foot, and mouth disease	213	176	174	148	0.99
Erythema infectiosum	38	61	73	49	0.33
Exanthem subitum	83	95	117	125	0.84
Pertussis	19	12	13	8	0.05
Herpangina	185	123	100	88	0.59
Mumps	106	95	70	88	0.59
Cold with exanthems by Enterovirus	13	19	19	18	0.12
Mucocutaneous Lymphnode Syndrome		1	3	2	0.01
Influenza	5	7	17	19	0.07
Acute hemorrhagic conjunctivitis	3	1		1	0.03
Epidemic keratoconjunctivitis	24	20	21	31	0.79
Bacterial meningitis	1				
Aseptic meningitis	1	1	2	1	0.04
Mycoplasma pneumonia	6	4	6	1	0.04
Chlamydial pneumonia (excluding psittacosis)			1		

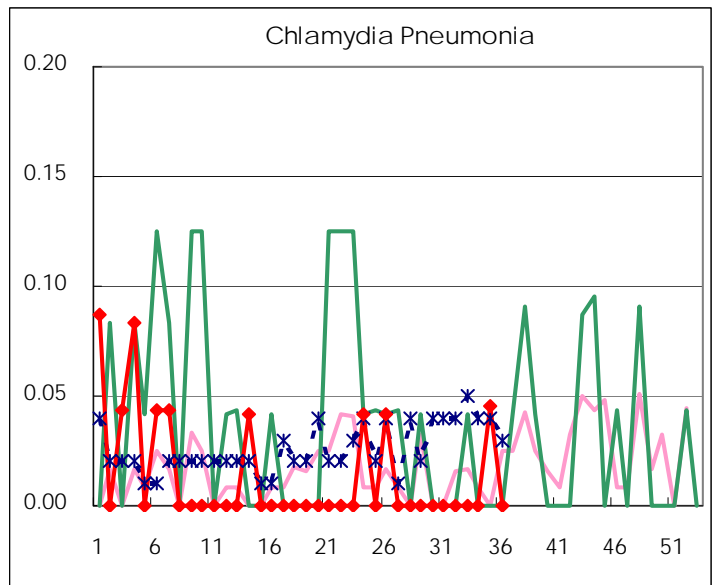
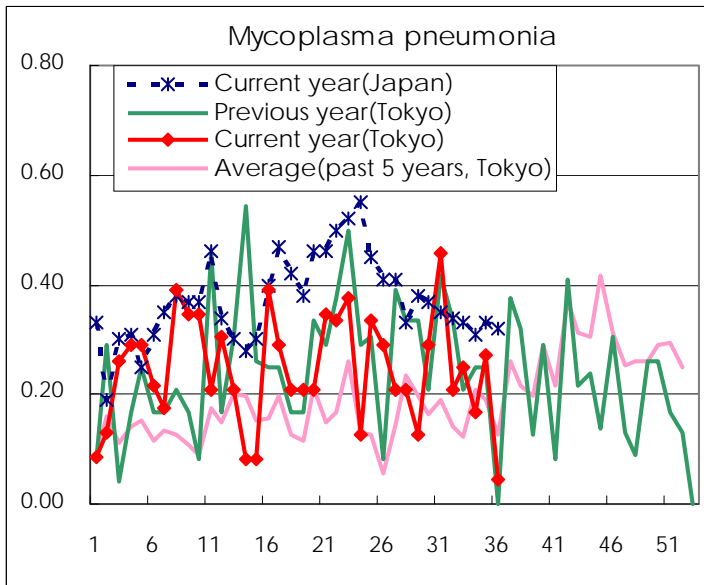
( Blank means 0. )

# Disease Trend Graph (weekly reported cases per sentinel in comparison)









Number of sentinel facilities for weekly reporting		
Types of sentinels	Number of sentinels	Sentinels having reported
Pediatric	150	149
Influenza	290	285
Ophthalmic	39	39
Specially-designated	25	23

Tokyo Metropolitan Government  
**Infectious Disease Surveillance Center**