
INFECTIOUS DISEASES WEEKLY REPORT

TOKYO IDWR

Tokyo Metropolitan Infectious Disease Surveillance Center

24 September 2010 / Number 37

Surveillance System in Tokyo, Japan

The infectious diseases which all physicians must report

All physicians must report to health centers the incidence of the diseases which are shown at page one. Health centers electronically report the individual cases to Tokyo Metropolitan Infectious Disease Surveillance Center.

The infectious diseases required to be reported by the sentinels

The numbers of patients who visit the sentinel clinics or hospitals during a week are reported to health centers in Tokyo. And they electronically report the numbers to Tokyo Metropolitan Infectious Disease Surveillance Center. We have about 400 sentinel clinics and hospitals in Tokyo.

1st Week is early January and 52nd Week is end of December.

Tokyo Metropolitan Institute of Public Health
Epidemiological Information Office

TEL:81-3-3363-3213 FAX:81-3-5332-7365
e-mail:idsc@tokyo-eiken.go.jp
URL:idsc.tokyo-eiken.go.jp/

Number of patients with the diseases which all physicians must report

Category	Diseases	Tokyo				Japan		
		34th	35th	36th	37th	Cum 2010	37th	Cum 2010
I	Ebola hemorrhagic fever							
	Crimean-Congo hemorrhagic fever							
	Smallpox							
	South American hemorrhagic fever							
	Plague							
	Marburg disease							
	Lassa fever							
II	Acute poliomyelitis							2
	Tuberculosis	49	68	41	45	2,865	276	18,059
	Diphtheria							
	Severe Acute Respiratory Syndrome(SARS)							
	Avian influenza H5N1							
III	Cholera		1			2	1	8
	Shigellosis	1	2	2	2	55	5	136
	Enterohemorrhagic Escherichia coli infection	21	16	19	22	277	147	3,226
	Typhoid fever		1			7	1	24
	Paratyphoid fever			1	1	5		19
IV	Hepatitis E					7	1	48
	West Nile fever							
	Hepatitis A	1	1		2	40	4	306
	Echinococcosis							7
	Yellow fever							
	Psittacosis							9
	Omsk hemorrhagic fever							
	Relapsing fever							
	Kyasanur forest disease							
	Q fever							2
	Rabies							
	Coccidioidomycosis							
	Monkeypox							
	Hemorrhagic fever with renal syndrome							
	Western equine encephalitis							
	Tick-borne encephalitis							
	Anthrax							
	Scrub typhus(Tsutsugamushi disease)					5		113
	Dengue fever	3	5	4	5	44	15	163
	Eastern equine encephalitis							
	Avian influenza (excluding H5N1)							
	Nipah virus infection							
	Japanese spotted fever					1	5	80
	Japanese encephalitis							1
	Epidemic typhus							
	Hantavirus pulmonary syndrome							
	Herpes B virus infection							
	Glanders							
	Brucellosis							2
	Venezuelan equine encephalitis							
Hendra virus infection								
Botulism								
Malaria	1		2	2	23	3	54	
Tularemia								
Lyme disease					1		10	
Lyssavirus infection(excluding rabies)								
Rift valley fever								
Melioidosis					1	1	3	
Legionellosis			1	1	28	12	509	
Leptospirosis					2		6	
Rocky mountain spotted fever								

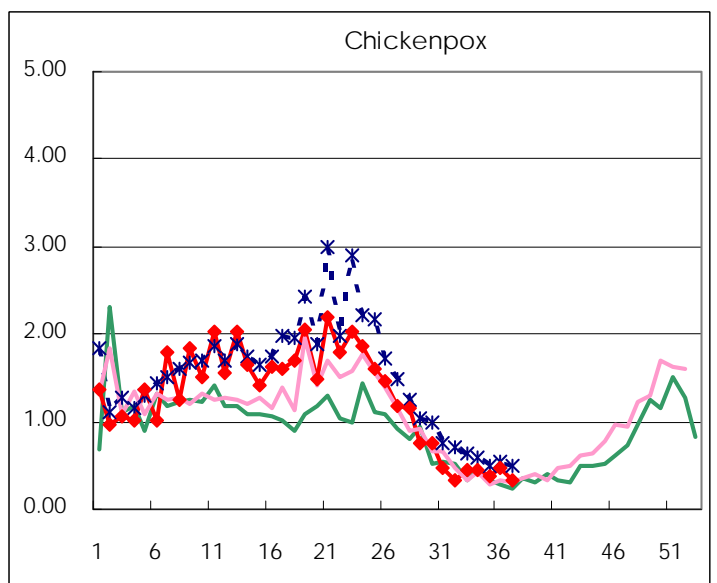
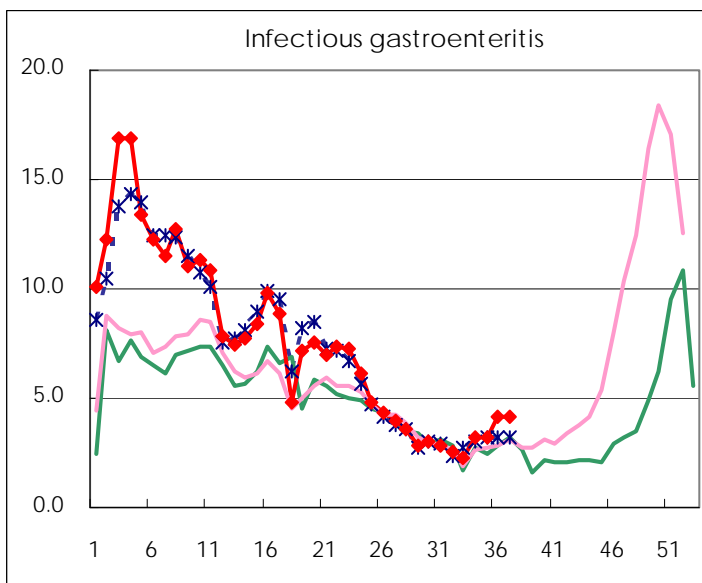
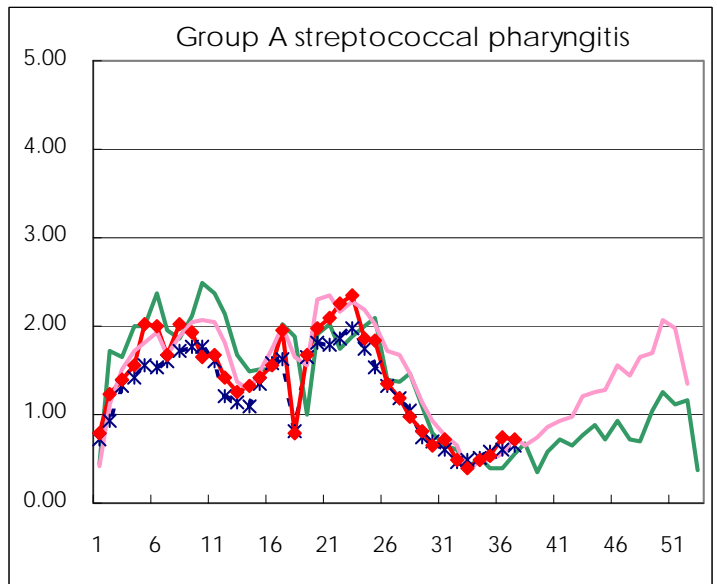
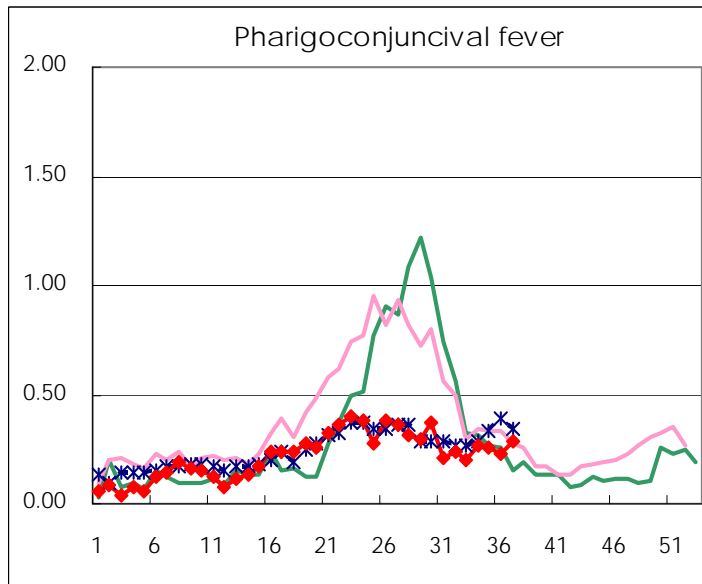
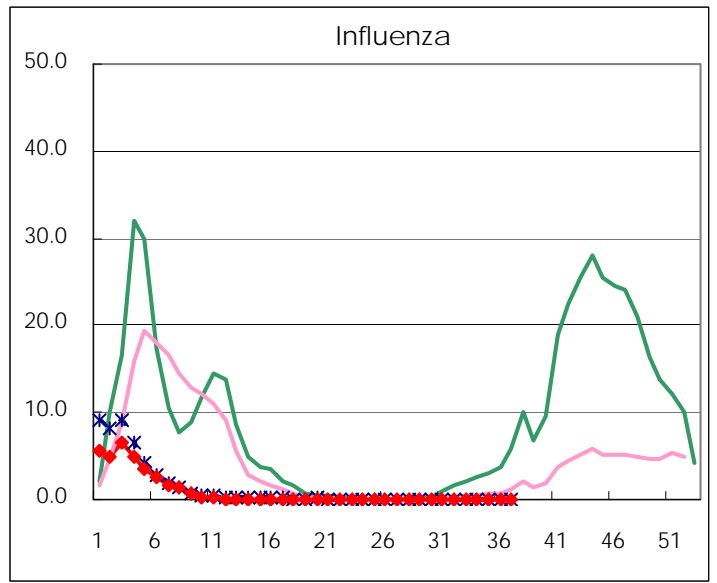
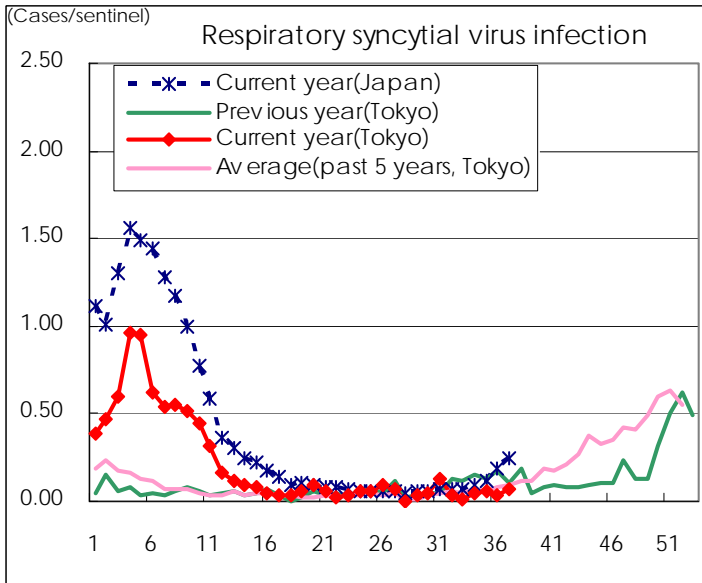
Category	Diseases	Tokyo					Japan	
		34th	35th	36th	37th	Cum 2010	37th	Cum 2010
V	Amebiasis	3	5	5	6	127	13	604
	Viral hepatitis(excluding hepatitis A and E)	1		1	1	30	4	144
	Acute encephalitis(excluding JE and WNE)					12		169
	Cryptosporidiosis					3		15
	Creutzfeldt-Jakob disease					10	2	117
	Severe invasive streptococcal infections(TSLS)					14	1	88
	Acquired immunodeficiency syndrome (AIDS)	5	10	8	13	337	19	1,033
	Giardiasis					9		54
	Meningococcal meningitis							6
	Congenital rubella syndrome							
	Syphilis	4	1	3	5	119	11	428
	Tetanus	1				3		73
	Vancomycin-resistant S. aureus infection							
	Vancomycin-resistant Enterococcus infection					11	2	76
	Rubella		1			11	1	70
Measles	1	1	1		61	3	382	
Novel Flu	Novel influenza (pandemic A/H1N1 2009)	—	—	—	—		—	

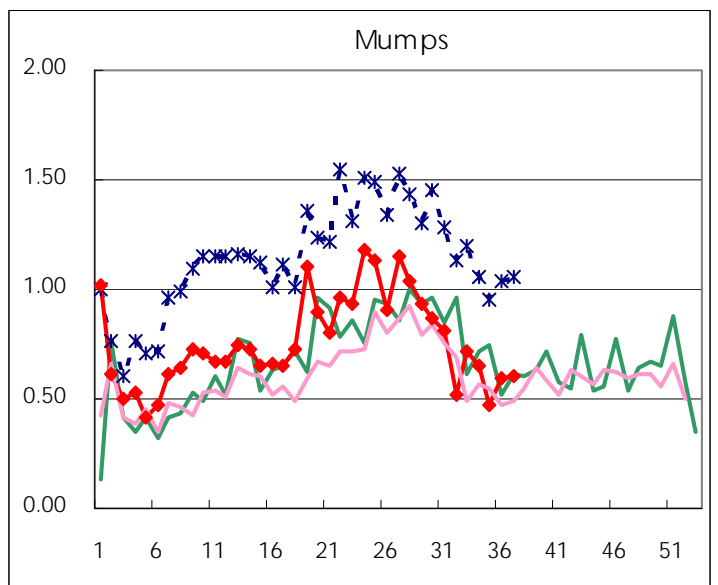
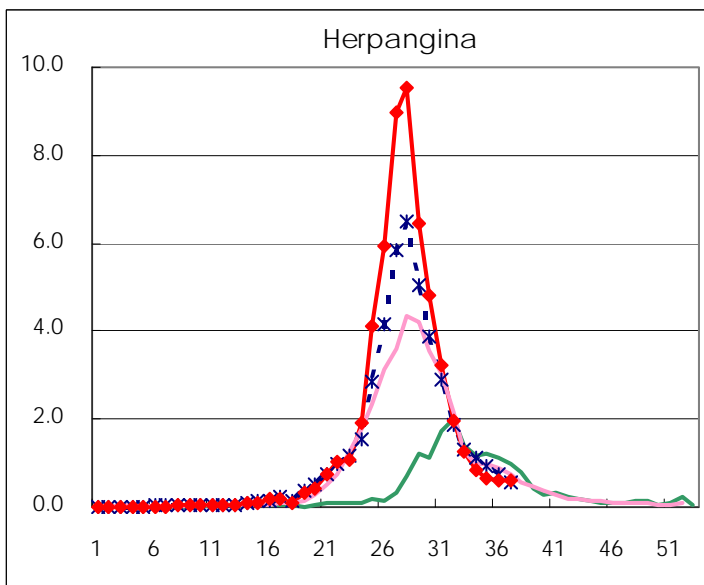
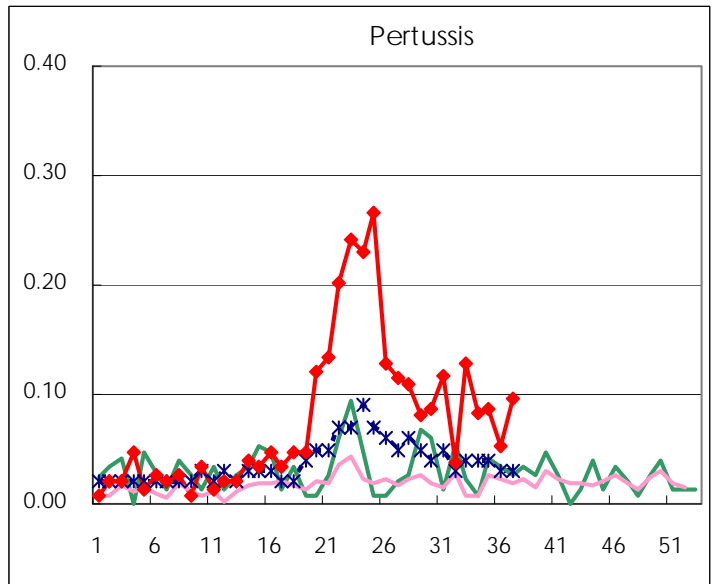
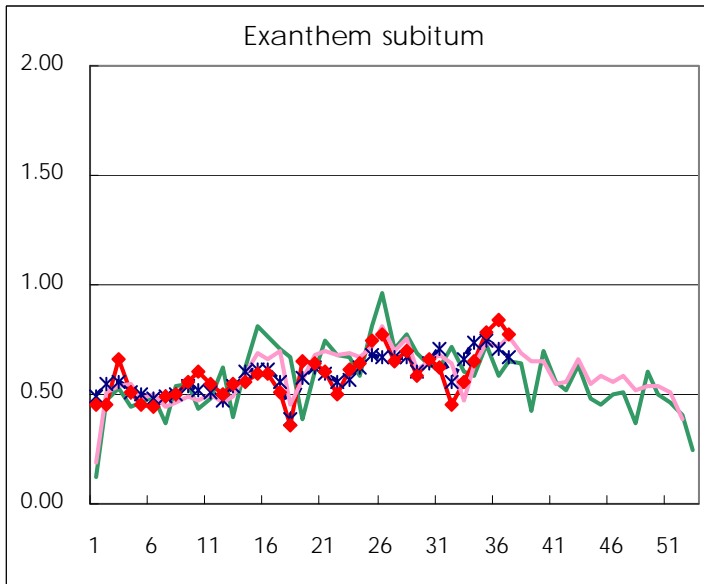
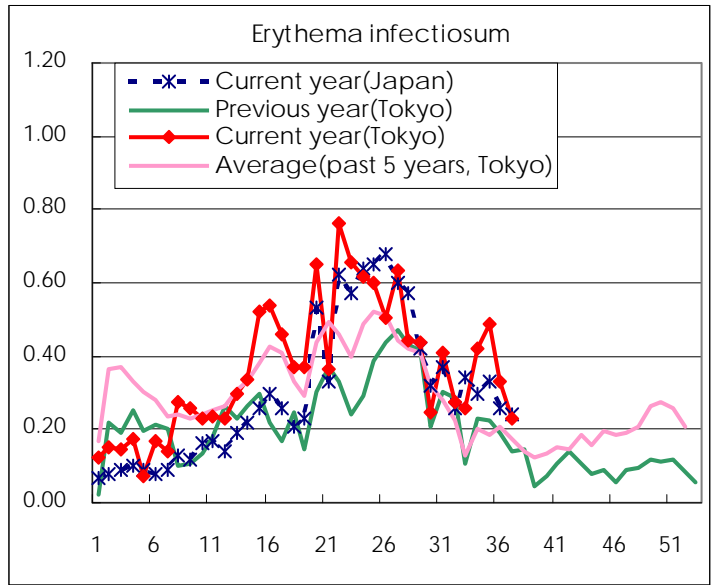
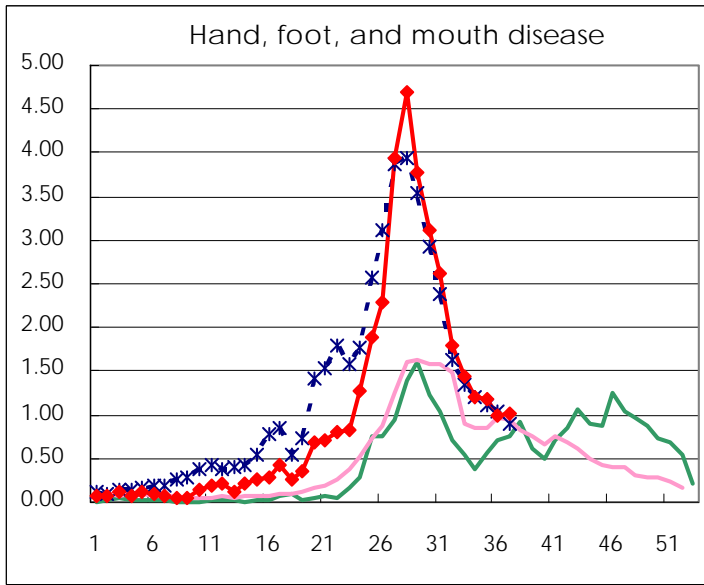
Number of patients with the diseases to be reported
by the designated clinics and hospitals

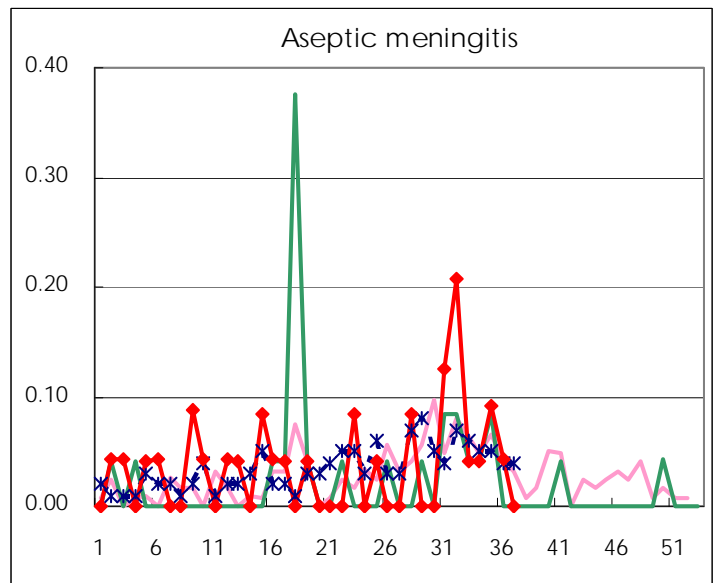
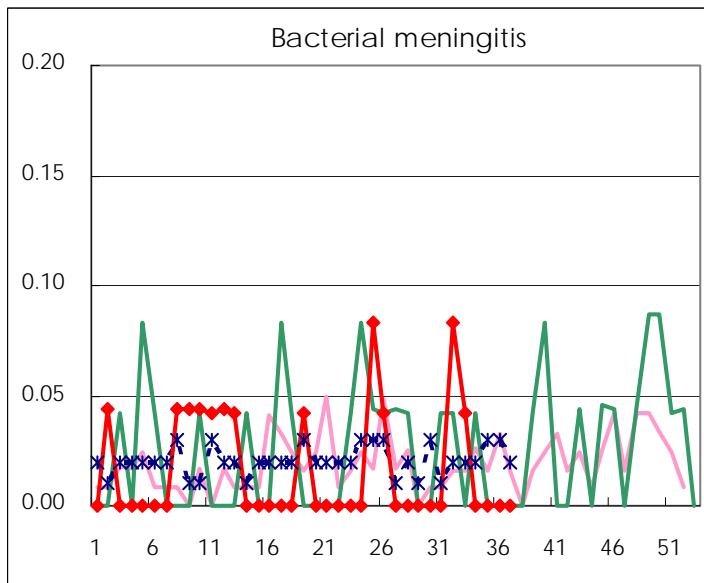
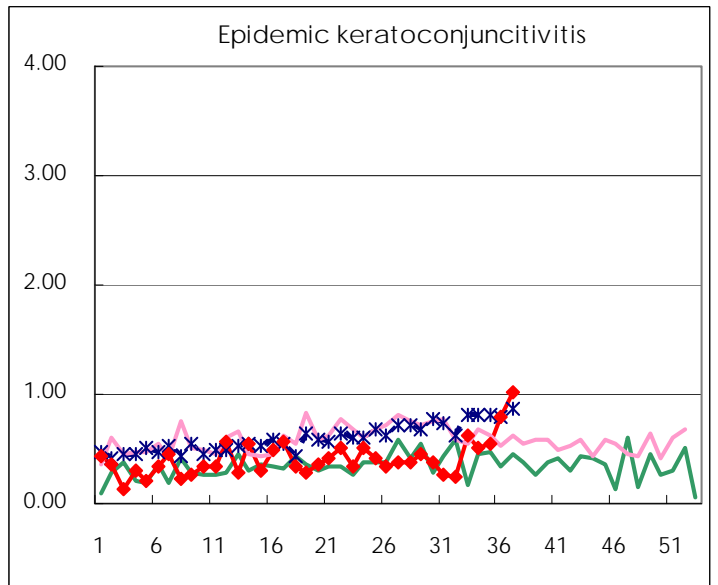
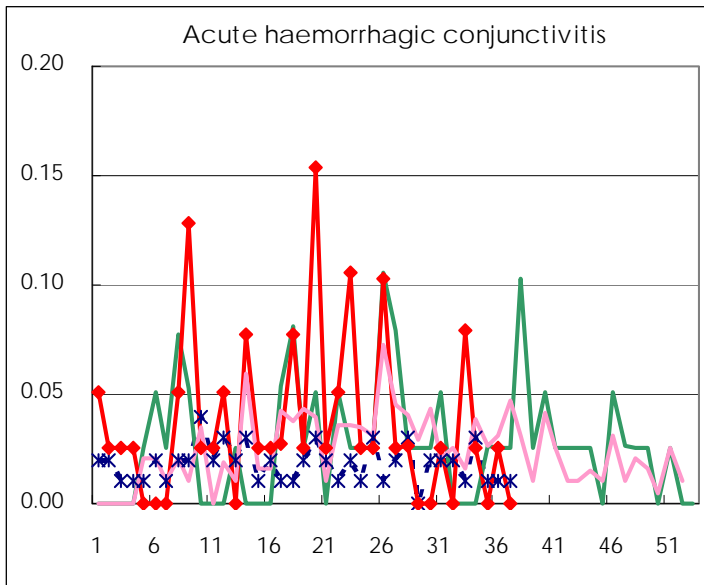
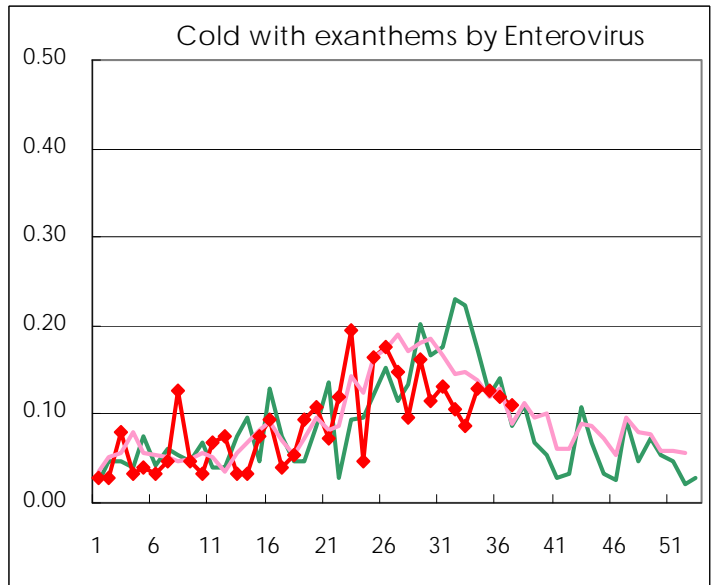
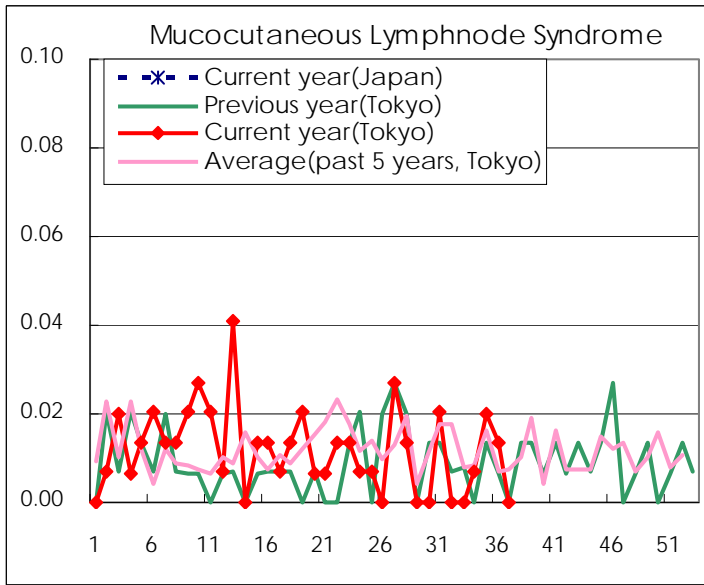
Diseases	2010				
	34th	35th	36th	37th	/sentinel
Respiratory syncytial virus infection	7	9	6	11	0.08
Pharyngoconjunctival fever	39	38	34	42	0.29
Group A streptococcal pharyngitis	70	79	111	105	0.72
Infectious gastroenteritis	465	479	614	599	4.13
Chickenpox	66	55	69	49	0.34
Hand, foot, and mouth disease	176	174	148	146	1.01
Erythema infectiosum	61	73	49	33	0.23
Exanthem subitum	95	117	125	112	0.77
Pertussis	12	13	8	14	0.10
Herpangina	123	100	88	91	0.63
Mumps	95	70	88	88	0.61
Cold with exanthems by Enterovirus	19	19	18	16	0.11
Mucocutaneous Lymphnode Syndrome	1	3	2		
Influenza	7	17	19	28	0.10
Acute hemorrhagic conjunctivitis	1		1		
Epidemic keratoconjunctivitis	20	21	31	39	1.03
Bacterial meningitis					
Aseptic meningitis	1	2	1		
Mycoplasma pneumonia	4	6	1	5	0.22
Chlamydial pneumonia (excluding psittacosis)		1			

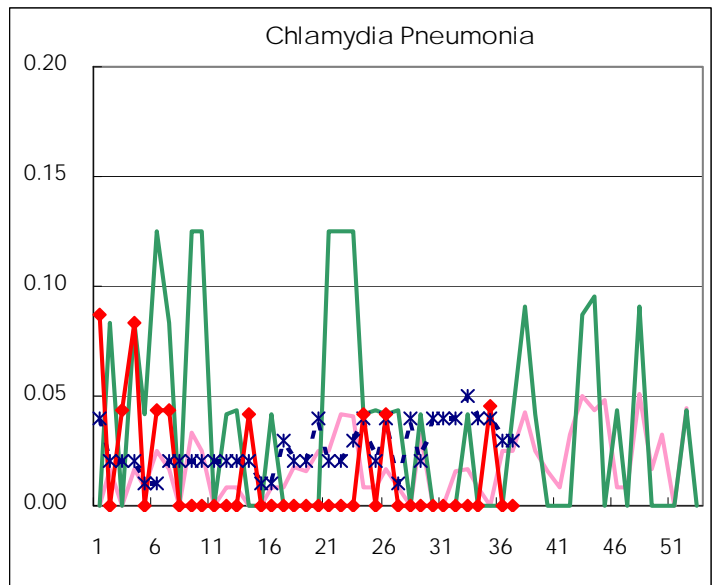
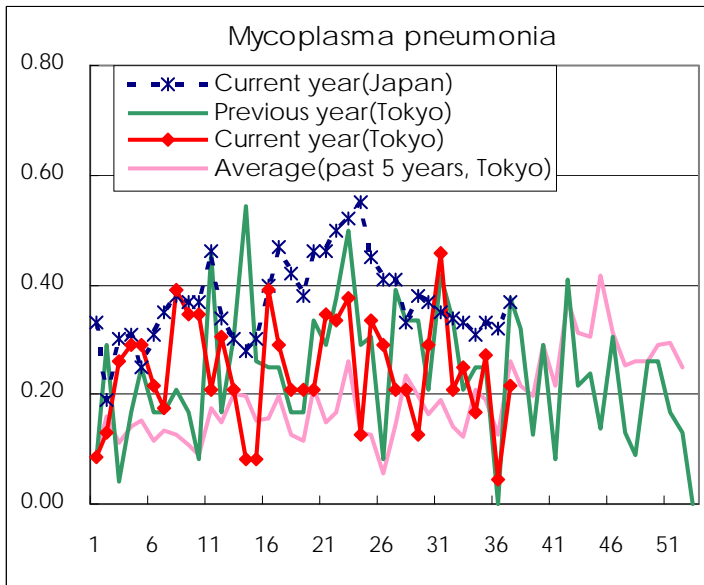
(Blank means 0.)

Disease Trend Graph (weekly reported cases per sentinel in comparison)









Number of sentinel facilities for weekly reporting		
Types of sentinels	Number of sentinels	Sentinels having reported
Pediatric	150	145
Influenza	290	276
Ophthalmic	39	38
Specially-designated	25	23

Tokyo Metropolitan Government
Infectious Disease Surveillance Center