

---

INFECTIOUS DISEASES WEEKLY REPORT

# TOKYO IDWR

Tokyo Metropolitan Infectious Disease Surveillance Center

## 30 September 2010 / Number 38

### Surveillance System in Tokyo, Japan

#### The infectious diseases which all physicians must report

All physicians must report to health centers the incidence of the diseases which are shown at page one. Health centers electronically report the individual cases to Tokyo Metropolitan Infectious Disease Surveillance Center.

#### The infectious diseases required to be reported by the sentinels

The numbers of patients who visit the sentinel clinics or hospitals during a week are reported to health centers in Tokyo. And they electronically report the numbers to Tokyo Metropolitan Infectious Disease Surveillance Center. We have about 400 sentinel clinics and hospitals in Tokyo.

1st Week is early January and 52nd Week is end of December.

Tokyo Metropolitan Institute of Public Health  
Epidemiological Information Office

TEL:81-3-3363-3213 FAX:81-3-5332-7365

e-mail:[idsc@tokyo-eiken.go.jp](mailto:idsc@tokyo-eiken.go.jp)

URL:[idsc.tokyo-eiken.go.jp/](http://idsc.tokyo-eiken.go.jp/)

---

## Number of patients with the diseases which all physicians must report

Category	Diseases	Tokyo				Japan	
		35th	36th	37th	38th	Cum 2010	Cum 2010
I	Ebola hemorrhagic fever						
	Crimean-Congo hemorrhagic fever						
	Smallpox						
	South American hemorrhagic fever						
	Plague						
	Marburg disease						
	Lassa fever						
II	Acute poliomyelitis						2
	Tuberculosis	71	52	56	33	2,928	197
	Diphtheria						
	Severe Acute Respiratory Syndrome(SARS)						
	Avian influenza H5N1						
III	Cholera	1				2	8
	Shigellosis	2	2	2	1	56	145
	Enterohemorrhagic Escherichia coli infection	16	19	22	13	290	3,350
	Typhoid fever	1				7	24
	Paratyphoid fever		1	1		5	18
IV	Hepatitis E					7	48
	West Nile fever						
	Hepatitis A	1		2		40	308
	Echinococcosis						1
	Yellow fever						
	Psittacosis						9
	Omsk hemorrhagic fever						
	Relapsing fever						
	Kyasanur forest disease						
	Q fever						2
	Rabies						
	Coccidioidomycosis						
	Monkeypox						
	Hemorrhagic fever with renal syndrome						
	Western equine encephalitis						
	Tick-borne encephalitis						
	Anthrax						
	Scrub typhus(Tsutsugamushi disease)					5	113
	Dengue fever	5	4	5	3	47	174
	Eastern equine encephalitis						
	Avian influenza (excluding H5N1)						
	Nipah virus infection						
	Japanese spotted fever					1	83
	Japanese encephalitis						1
	Epidemic typhus						
	Hantavirus pulmonary syndrome						
	Herpes B virus infection						
	Glanders						
	Brucellosis						2
	Venezuelan equine encephalitis						
	Hendra virus infection						
Botulism							
Malaria		2	2		23	55	
Tularemia							
Lyme disease					1	11	
Lyssavirus infection(excluding rabies)							
Rift valley fever							
Melioidosis					1	3	
Legionellosis		1	1		28	527	
Leptospirosis					2	9	
Rocky mountain spotted fever							

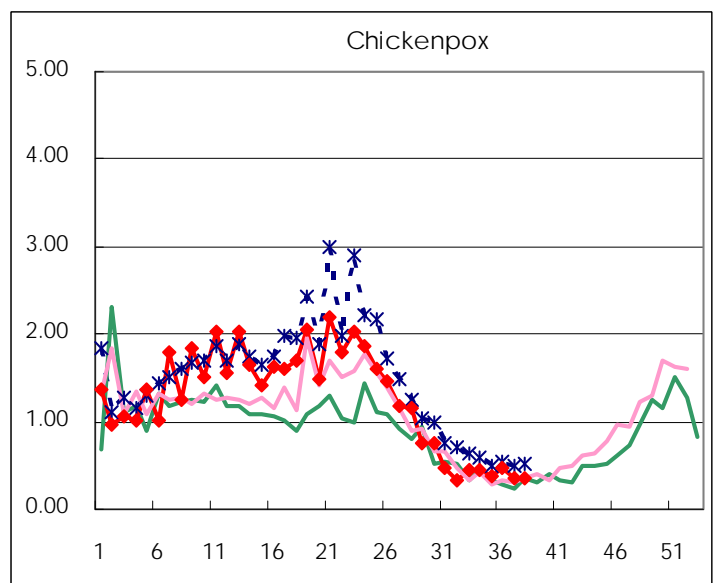
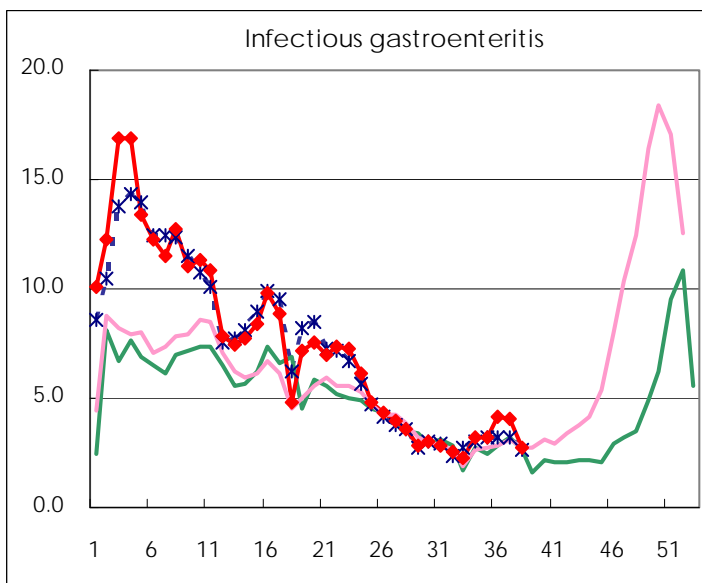
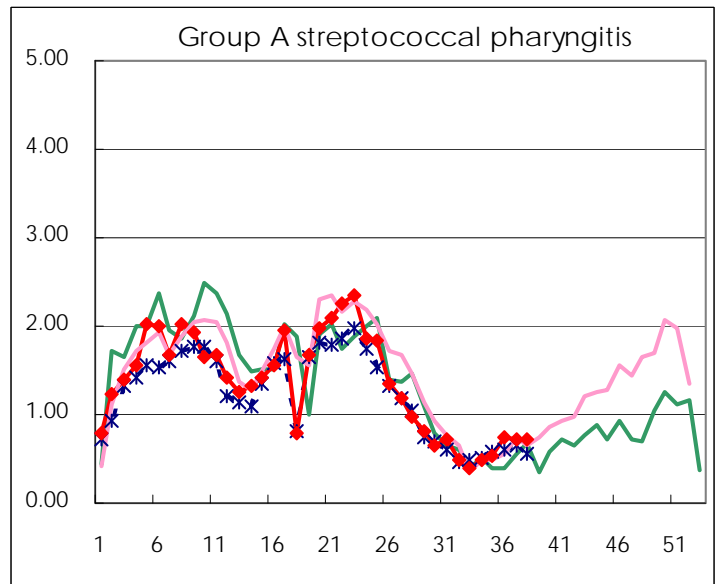
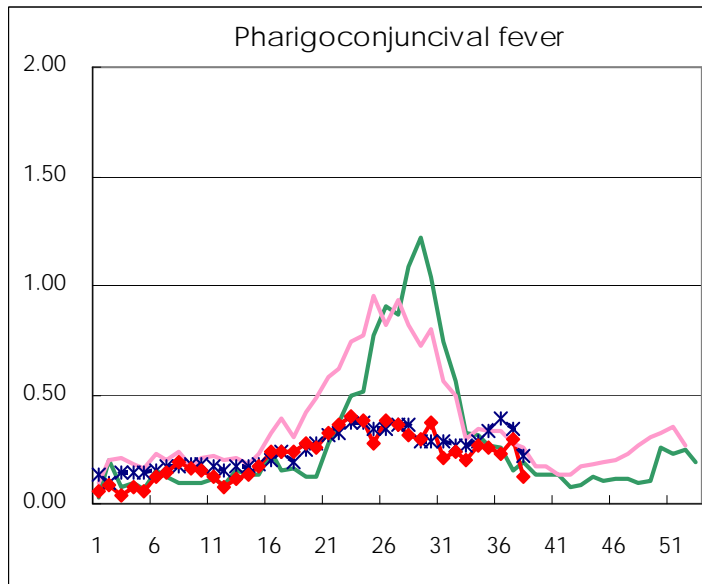
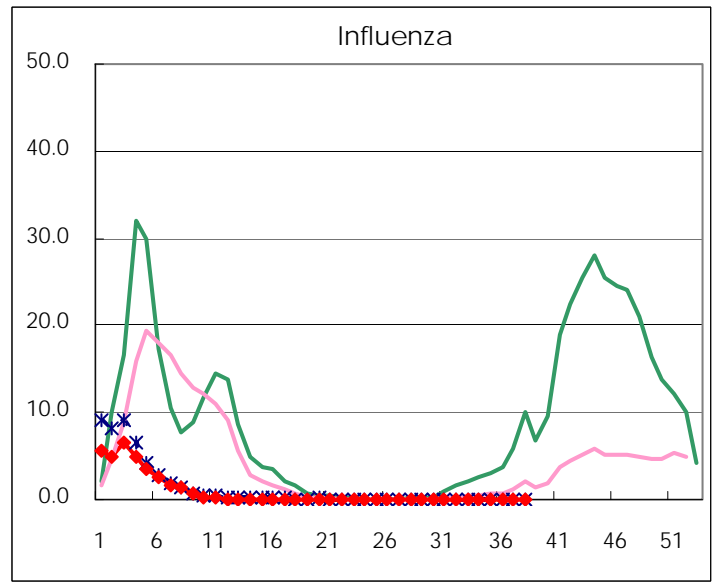
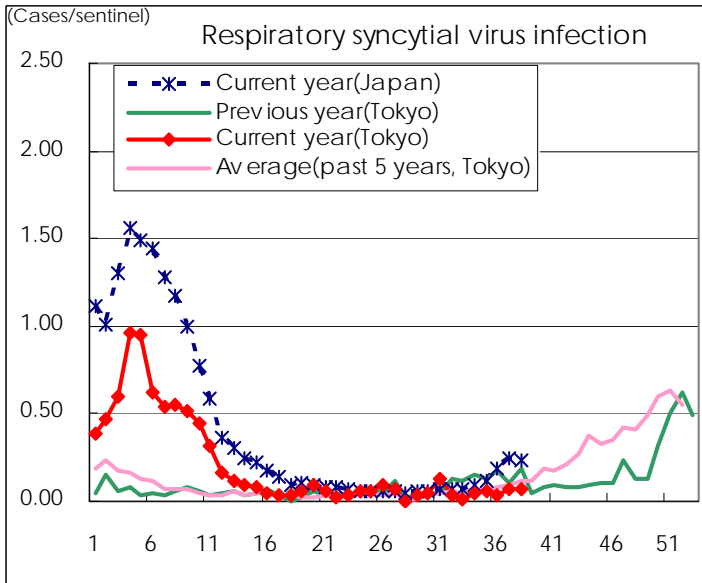
Category	Diseases	Tokyo					Japan	
		35th	36th	37th	38th	Cum 2010	38th	Cum 2010
V	Amebiasis	5	5	7	2	130	4	618
	Viral hepatitis(excluding hepatitis A and E)		1	1		30		145
	Acute encephalitis(excluding JE and WNE)					12		172
	Cryptosporidiosis					3		16
	Creutzfeldt-Jakob disease					10		117
	Severe invasive streptococcal infections(TSLS)					14		88
	Acquired immunodeficiency syndrome (AIDS)	10	8	14	7	345	11	1,053
	Giardiasis				2	11	1	57
	Meningococcal meningitis							6
	Congenital rubella syndrome							
	Syphilis	1	3	5	2	121	7	441
	Tetanus					3	1	75
	Vancomycin-resistant S. aureus infection							
	Vancomycin-resistant Enterococcus infection				1	12	4	80
	Rubella	1				11		71
Measles	1	1			61	3	385	
Novel Flu	Novel influenza (pandemic A/H1N1 2009)	—	—	—	—		—	

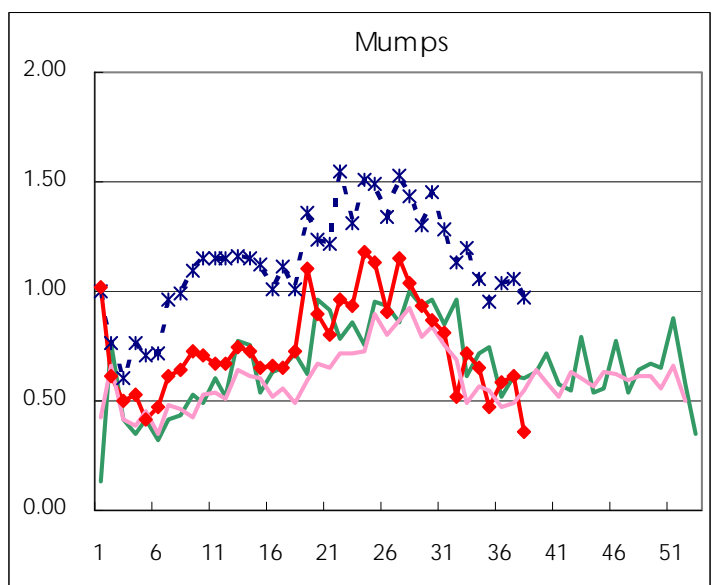
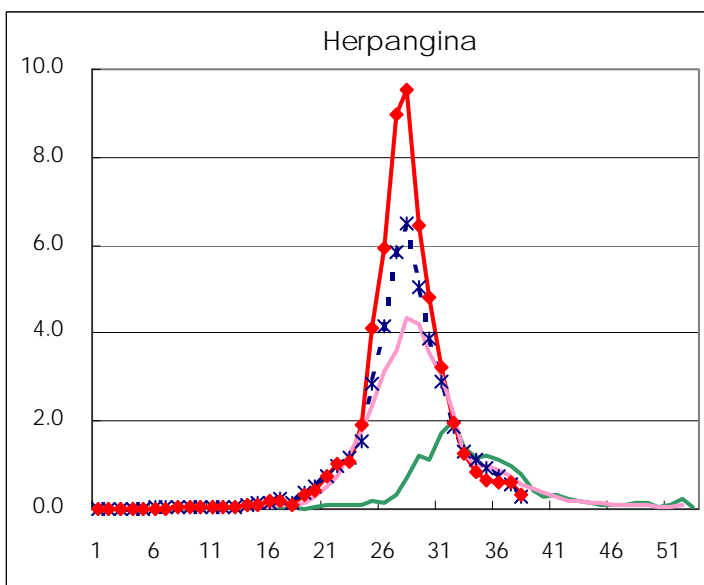
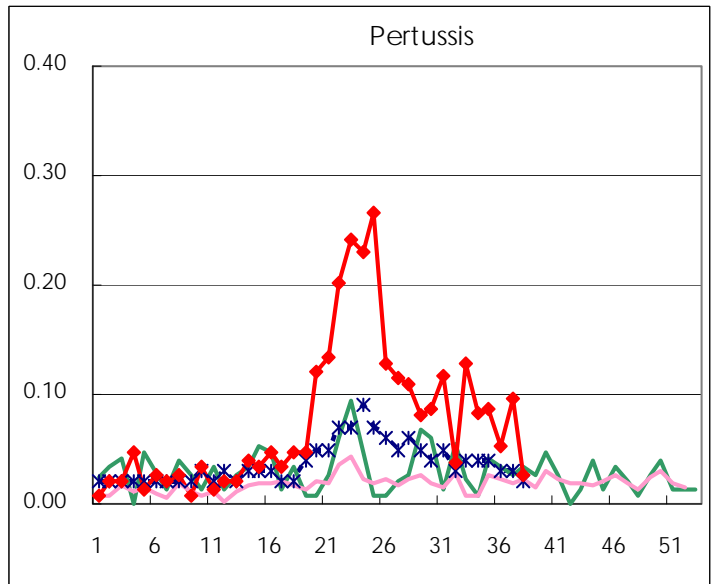
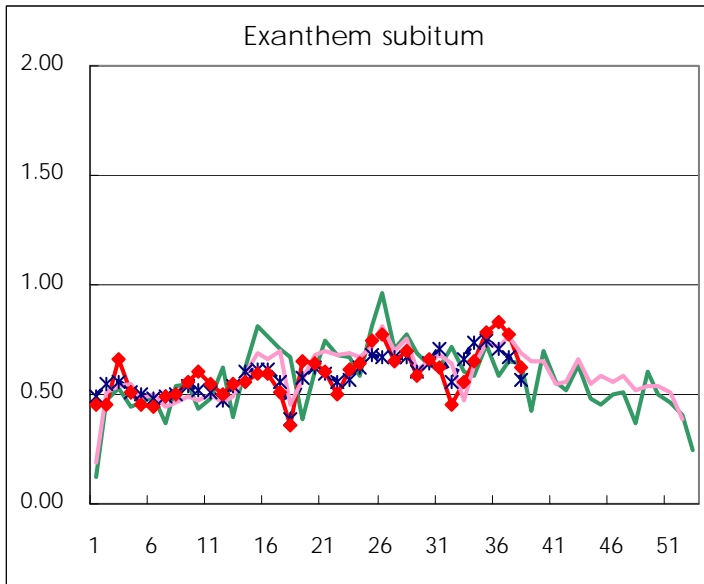
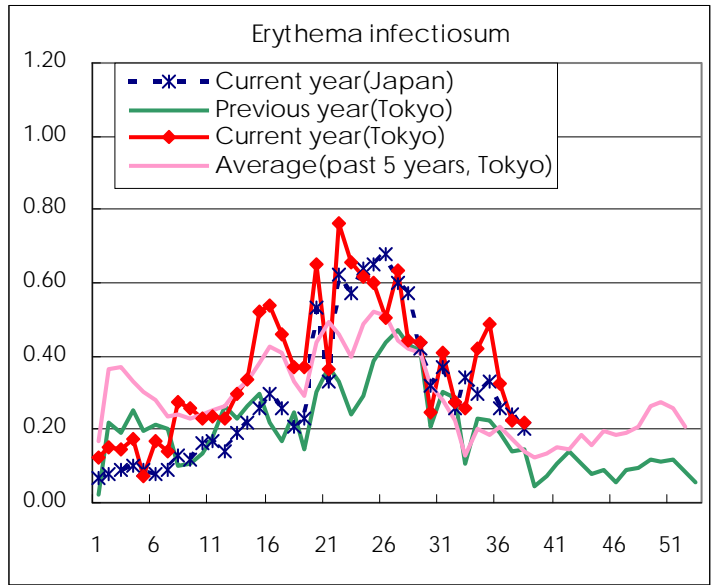
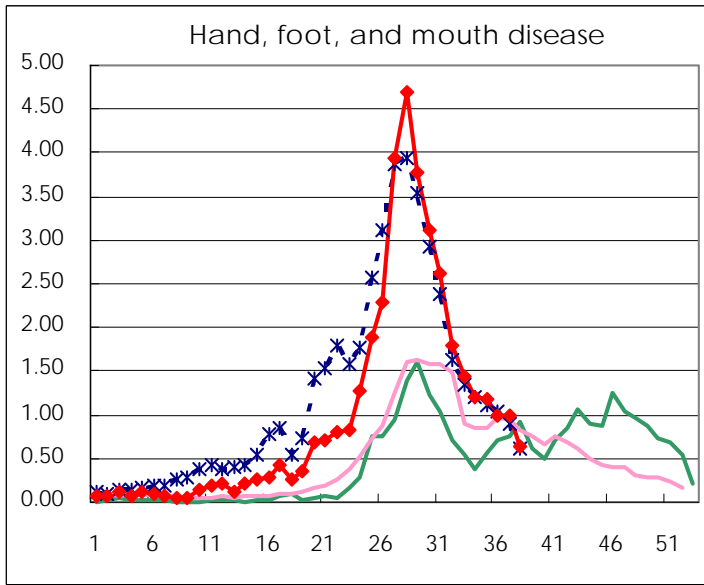
Number of patients with the diseases to be reported  
by the designated clinics and hospitals

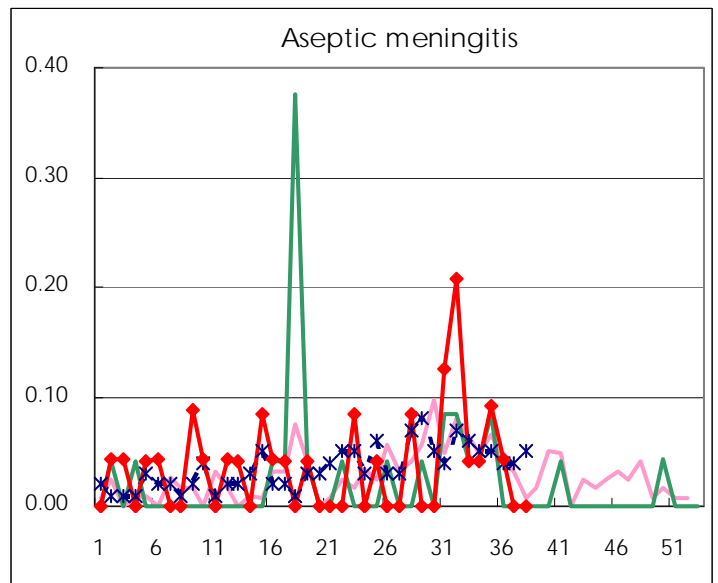
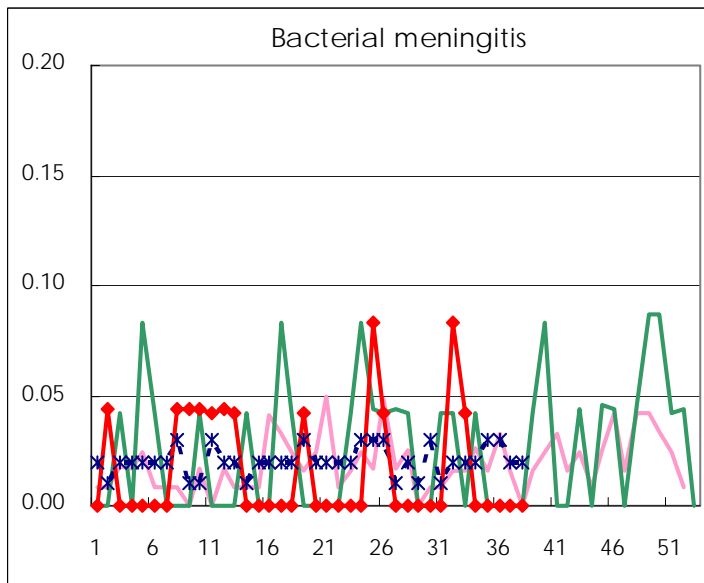
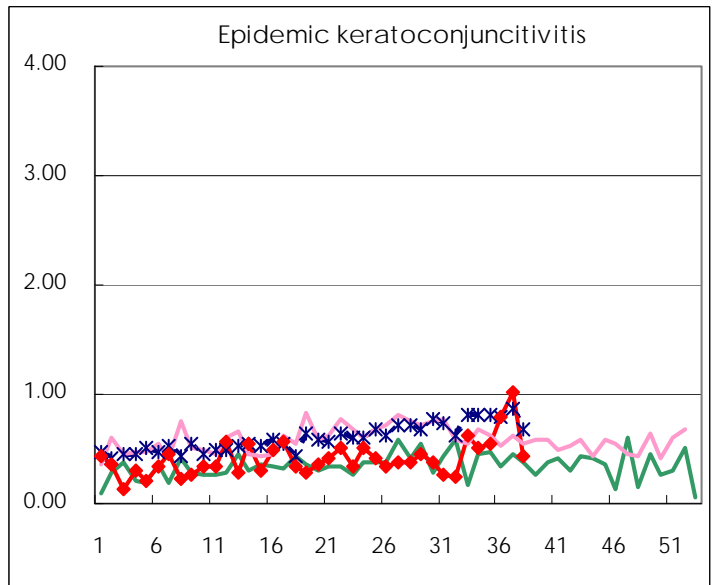
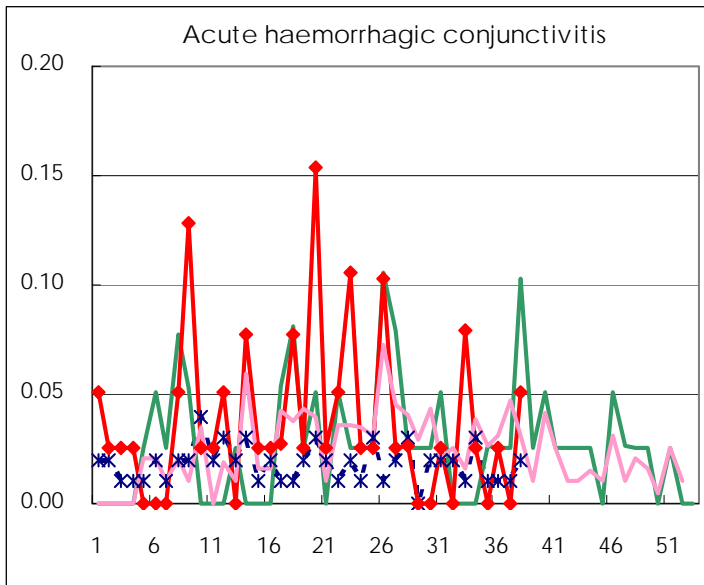
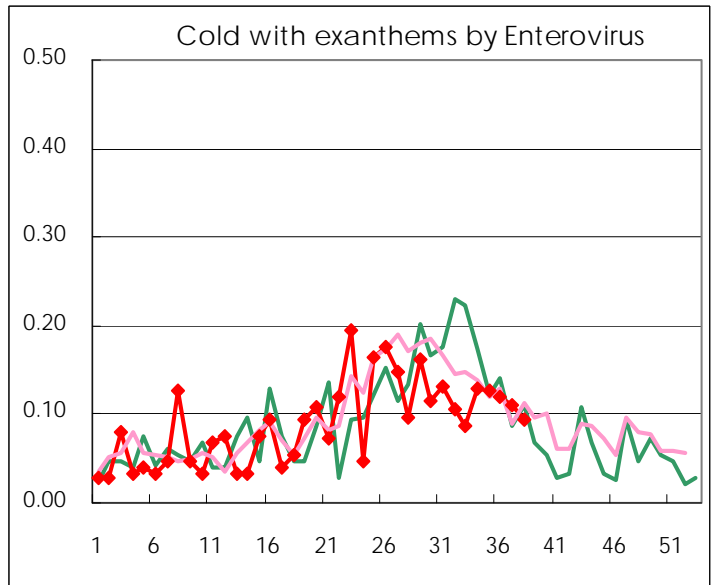
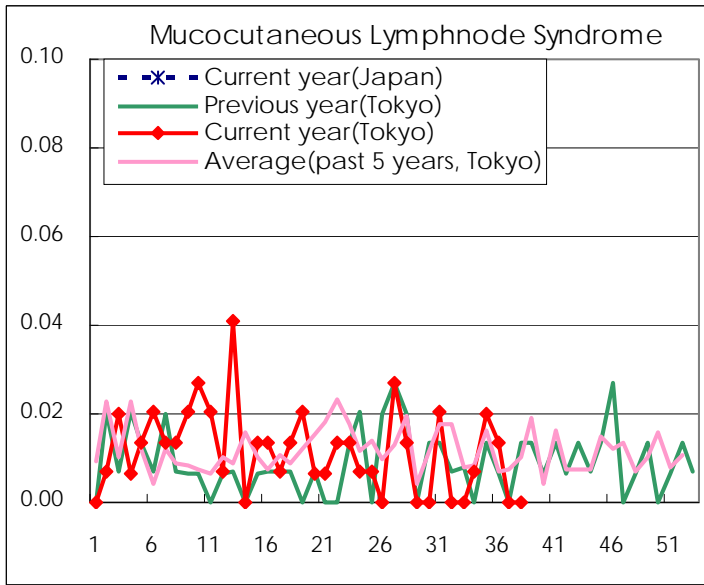
Diseases	2010				
	35th	36th	37th	38th	/sentinel
Respiratory syncytial virus infection	9	6	11	11	0.07
Pharyngoconjunctival fever	38	35	43	18	0.12
Group A streptococcal pharyngitis	79	111	105	106	0.72
Infectious gastroenteritis	479	616	599	409	2.76
Chickenpox	55	69	50	54	0.36
Hand, foot, and mouth disease	174	148	146	94	0.64
Erythema infectiosum	73	49	33	32	0.22
Exanthem subitum	117	125	113	92	0.62
Pertussis	13	8	14	4	0.03
Herpangina	100	89	91	49	0.33
Mumps	70	88	89	53	0.36
Cold with exanthems by Enterovirus	19	18	16	14	0.09
Mucocutaneous Lymphnode Syndrome	3	2			
Influenza	17	19	28	20	0.07
Acute hemorrhagic conjunctivitis		1		2	0.05
Epidemic keratoconjunctivitis	21	31	39	17	0.44
Bacterial meningitis					
Aseptic meningitis	2	1			
Mycoplasma pneumonia	6	1	5	4	0.17
Chlamydial pneumonia (excluding psittacosis)	1			1	0.04

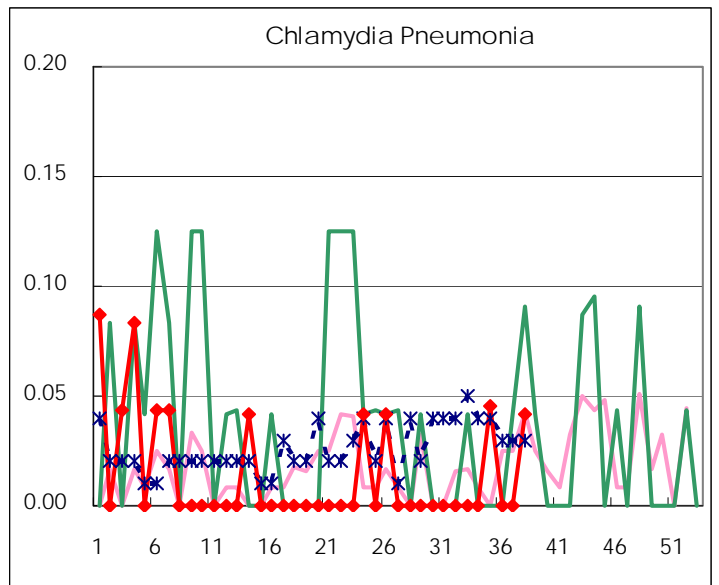
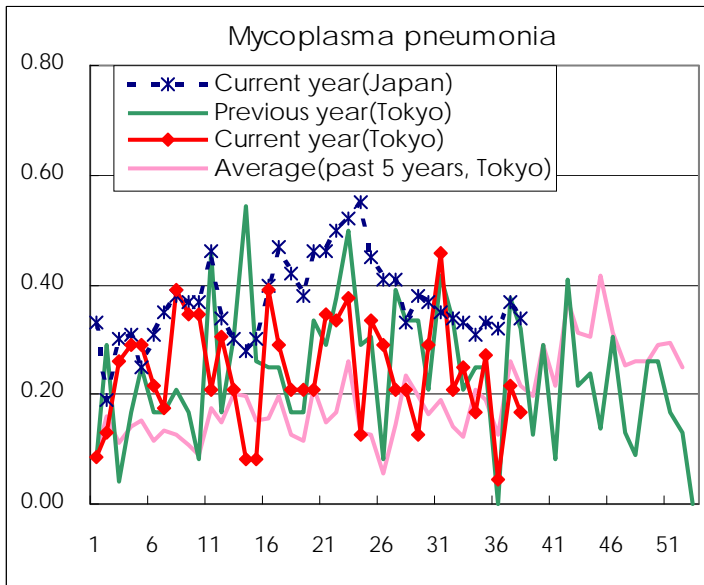
( Blank means 0. )

# Disease Trend Graph (weekly reported cases per sentinel in comparison)









Number of sentinel facilities for weekly reporting		
Types of sentinels	Number of sentinels	Sentinels having reported
Pediatric	150	148
Influenza	290	286
Ophthalmic	39	39
Specially-designated	25	24

Tokyo Metropolitan Government  
**Infectious Disease Surveillance Center**