
INFECTIOUS DISEASES WEEKLY REPORT

TOKYO IDWR

Tokyo Metropolitan Infectious Disease Surveillance Center

7 October 2010 / Number 39

Surveillance System in Tokyo, Japan

The infectious diseases which all physicians must report

All physicians must report to health centers the incidence of the diseases which are shown at page one. Health centers electronically report the individual cases to Tokyo Metropolitan Infectious Disease Surveillance Center.

The infectious diseases required to be reported by the sentinels

The numbers of patients who visit the sentinel clinics or hospitals during a week are reported to health centers in Tokyo. And they electronically report the numbers to Tokyo Metropolitan Infectious Disease Surveillance Center. We have about 400 sentinel clinics and hospitals in Tokyo.

1st Week is early January and 52nd Week is end of December.

Tokyo Metropolitan Institute of Public Health
Epidemiological Information Office

TEL:81-3-3363-3213 FAX:81-3-5332-7365

e-mail:idsc@tokyo-eiken.go.jp

URL:idsc.tokyo-eiken.go.jp/

Number of patients with the diseases which all physicians must report

Category	Diseases	Tokyo				Japan		
		36th	37th	38th	39th	Cum 2010	39th	Cum 2010
I	Ebola hemorrhagic fever							
	Crimean-Congo hemorrhagic fever							
	Smallpox							
	South American hemorrhagic fever							
	Plague							
	Marburg disease							
	Lassa fever							
II	Acute poliomyelitis							2
	Tuberculosis	54	61	37	53	3,011	314	18,937
	Diphtheria							
	Severe Acute Respiratory Syndrome(SARS)							
Avian influenza H5N1								
III	Cholera					2	1	9
	Shigellosis	2	2	1	3	59	11	157
	Enterohemorrhagic Escherichia coli infection	19	22	14	7	298	95	3,475
	Typhoid fever					7		24
	Paratyphoid fever	1	1			5		18
IV	Hepatitis E					7		48
	West Nile fever							
	Hepatitis A		2		1	41	1	311
	Echinococcosis							8
	Yellow fever							
	Psittacosis							9
	Omsk hemorrhagic fever							
	Relapsing fever							
	Kyasanur forest disease							
	Q fever							2
	Rabies							
	Coccidioidomycosis							
	Monkeypox							
	Hemorrhagic fever with renal syndrome							
	Western equine encephalitis							
	Tick-borne encephalitis							
	Anthrax							
	Scrub typhus(Tsutsugamushi disease)					5		114
	Dengue fever	4	5	3	6	53	9	184
	Eastern equine encephalitis							
	Avian influenza (excluding H5N1)							
	Nipah virus infection							
	Japanese spotted fever					1		86
	Japanese encephalitis							1
	Epidemic typhus							
	Hantavirus pulmonary syndrome							
	Herpes B virus infection							
	Glanders							
	Brucellosis							2
	Venezuelan equine encephalitis							
	Hendra virus infection							
	Botulism							
Malaria	2	2			23		56	
Tularemia								
Lyme disease					1		11	
Lyssavirus infection(excluding rabies)								
Rift valley fever								
Melioidosis					1		3	
Legionellosis	1	1		2	30	10	539	
Leptospirosis					2	1	13	
Rocky mountain spotted fever								

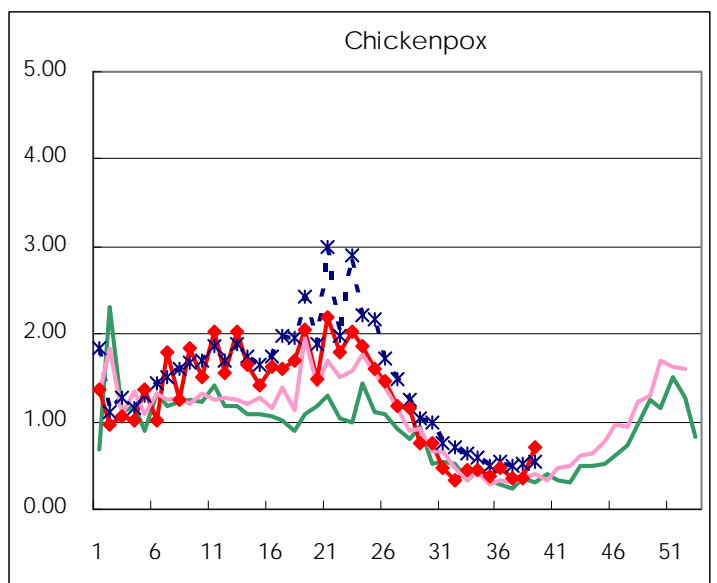
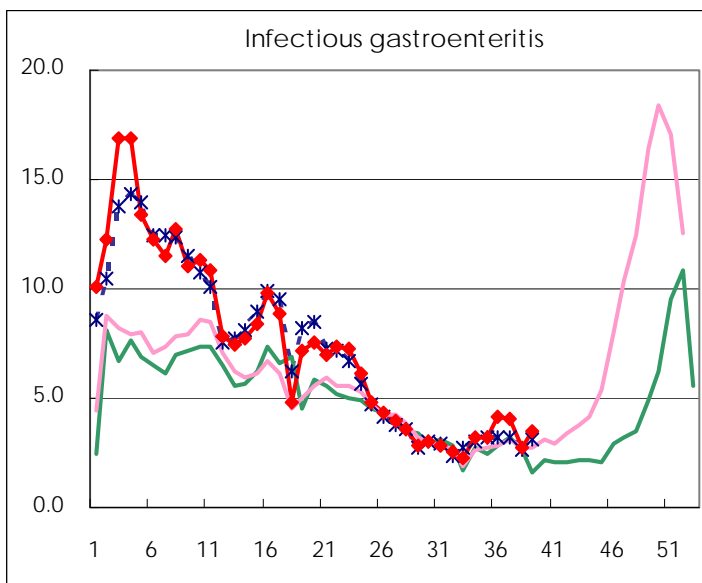
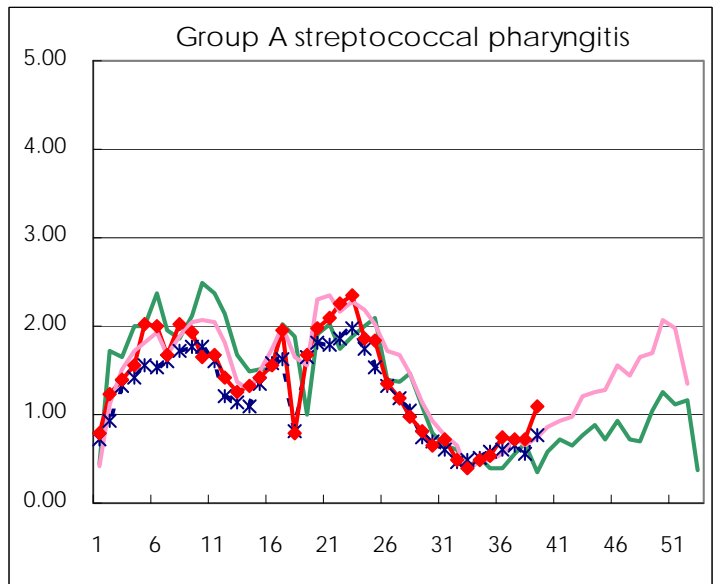
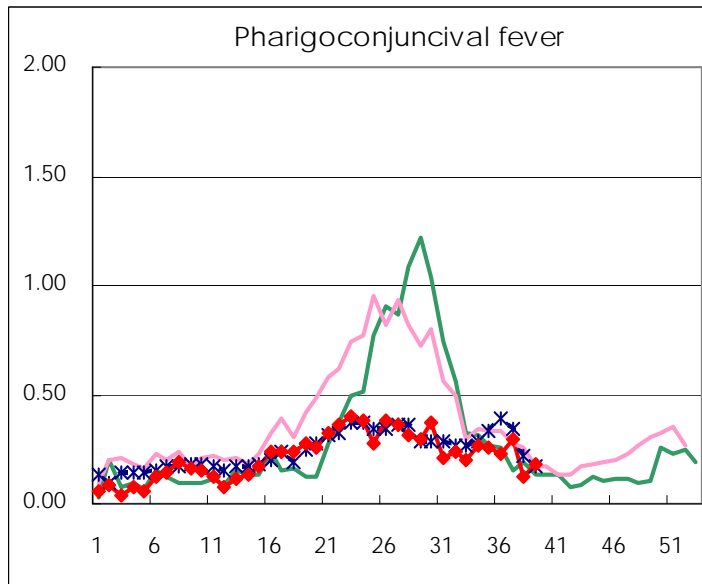
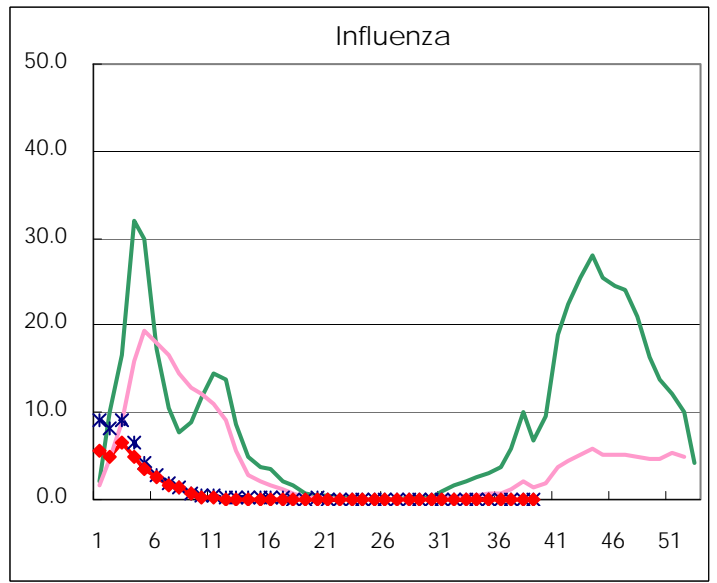
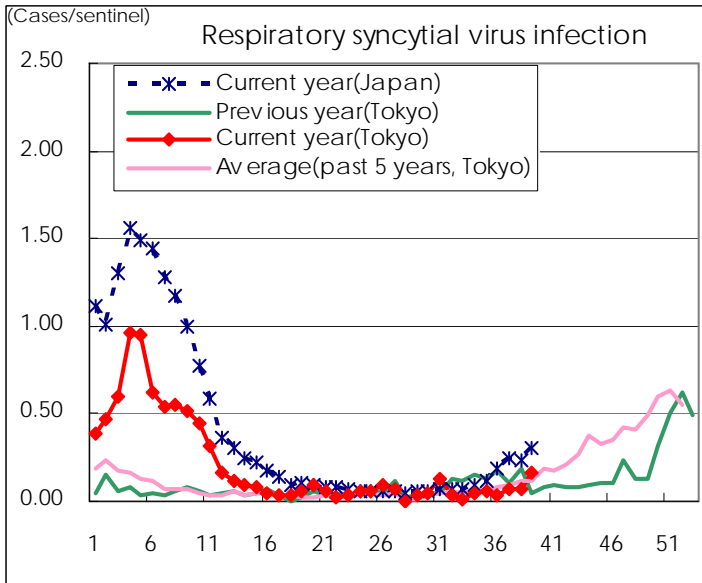
Category	Diseases	Tokyo					Japan	
		36th	37th	38th	39th	Cum 2010	39th	Cum 2010
V	Amebiasis	5	7	2	4	134	10	631
	Viral hepatitis(excluding hepatitis A and E)	1	1		1	31	2	150
	Acute encephalitis(excluding JE and WNE)				1	13	5	179
	Cryptosporidiosis					3		16
	Creutzfeldt-Jakob disease					10		119
	Severe invasive streptococcal infections(TSLS)					14		89
	Acquired immunodeficiency syndrome (AIDS)	8	14	7	21	366	15	1,079
	Giardiasis			2		11		58
	Meningococcal meningitis							6
	Congenital rubella syndrome							
	Syphilis	3	5	2	7	128	9	456
	Tetanus					3		75
	Vancomycin-resistant S. aureus infection							
	Vancomycin-resistant Enterococcus infection			1		12		80
	Rubella					11	1	72
Measles	1			3	64	9	395	
Novel Flu	Novel influenza (pandemic A/H1N1 2009)	—	—	—	—		—	

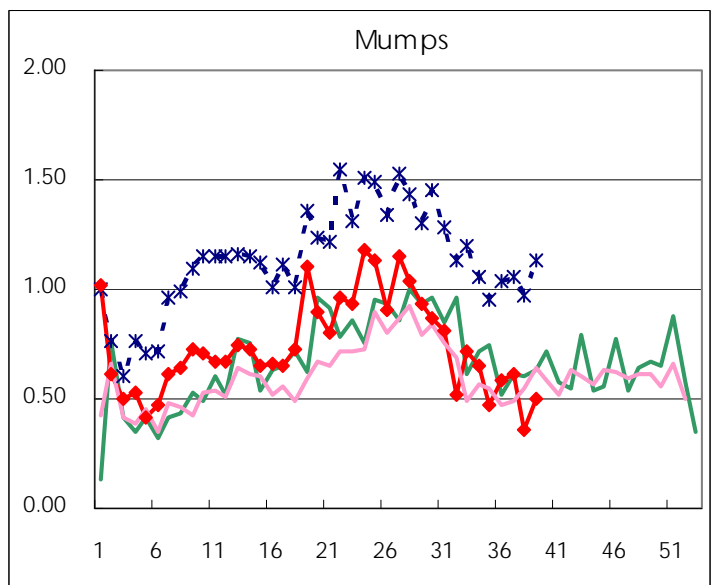
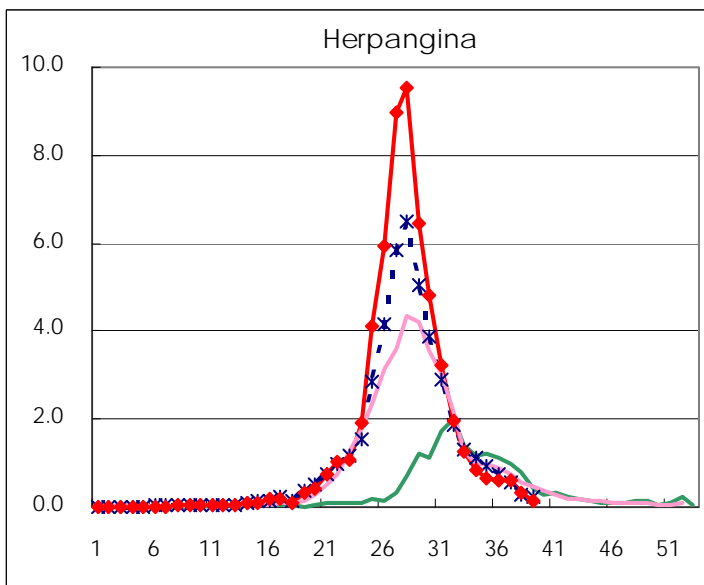
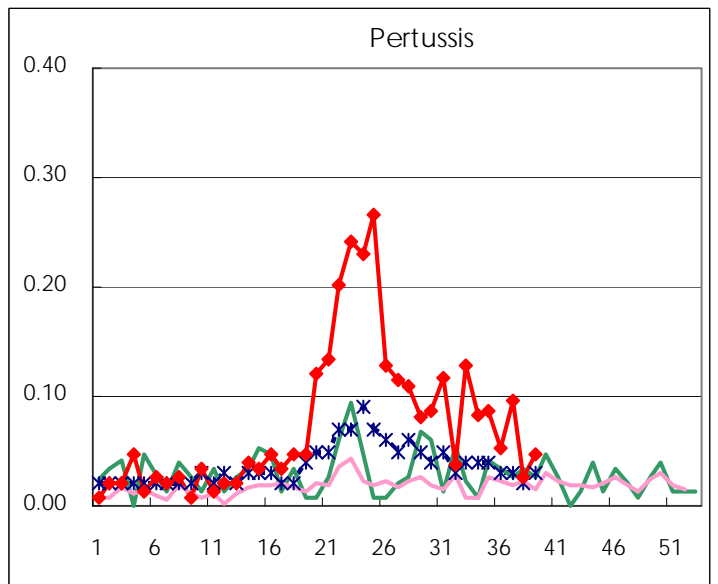
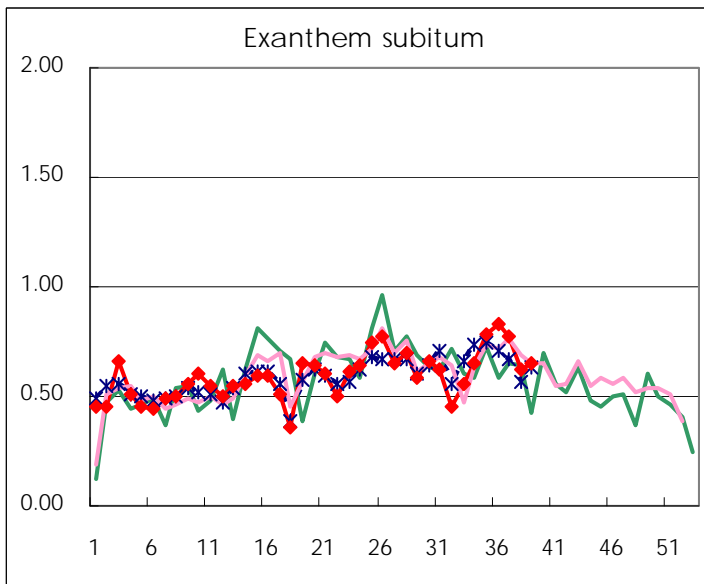
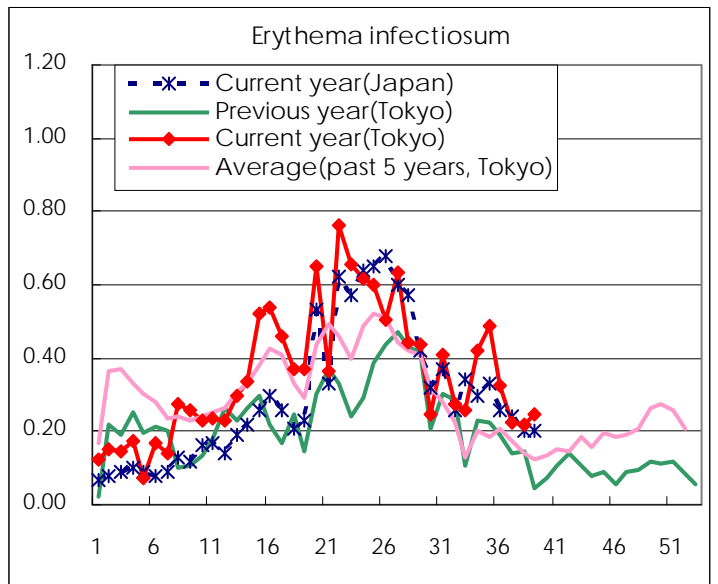
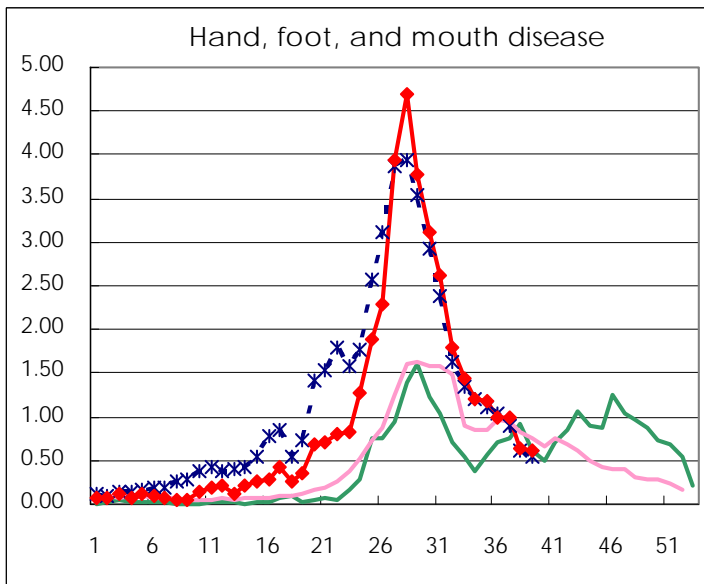
Number of patients with the diseases to be reported
by the designated clinics and hospitals

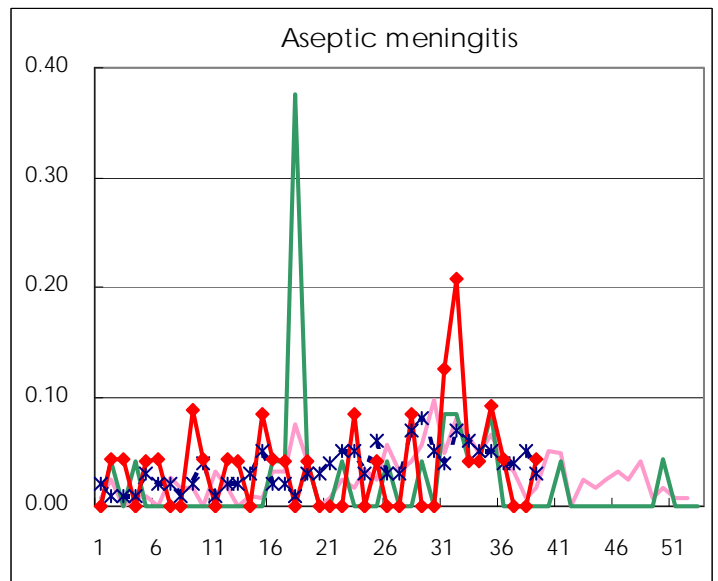
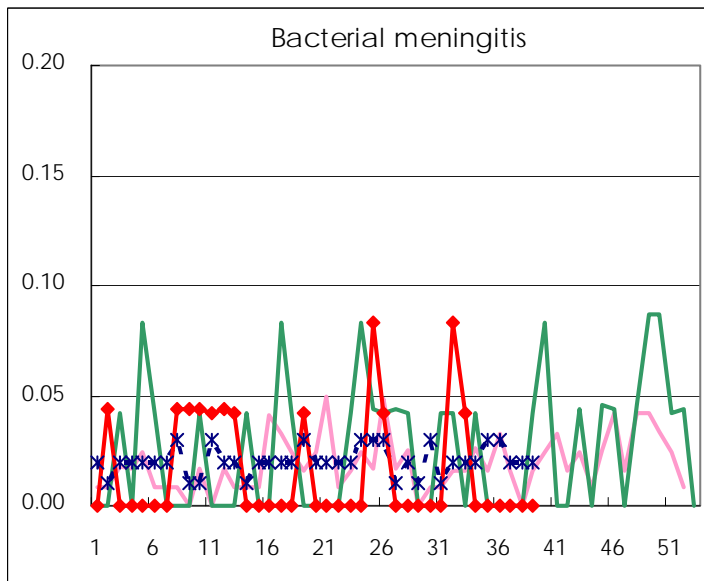
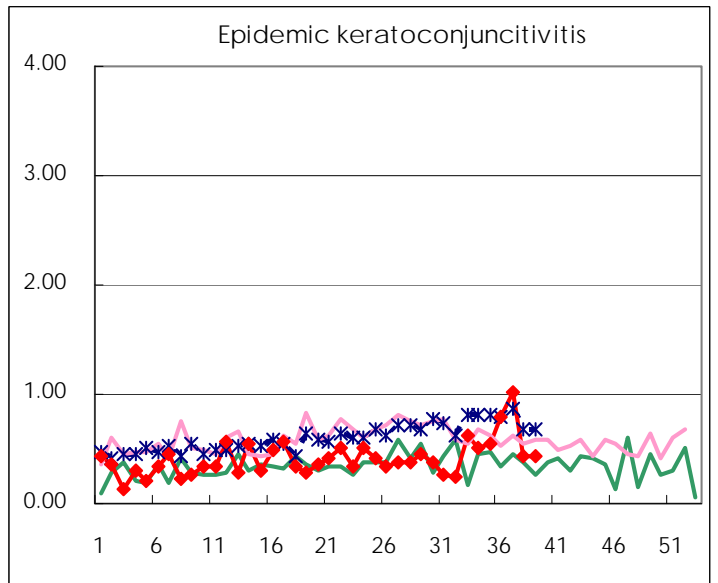
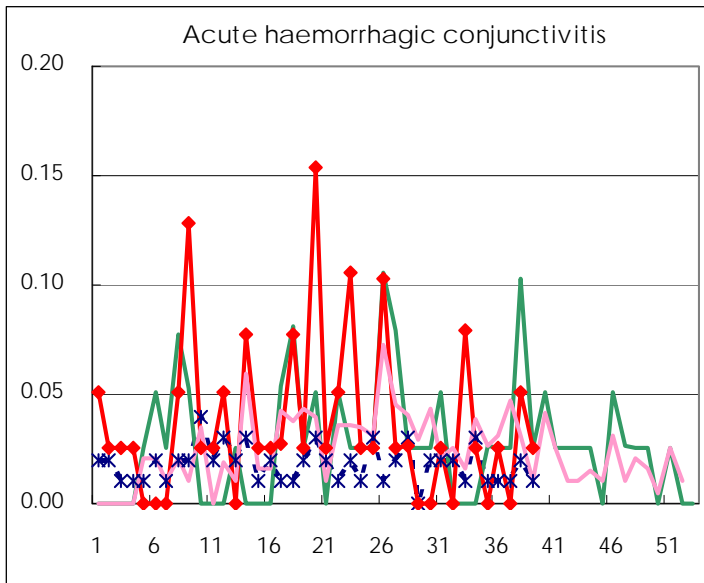
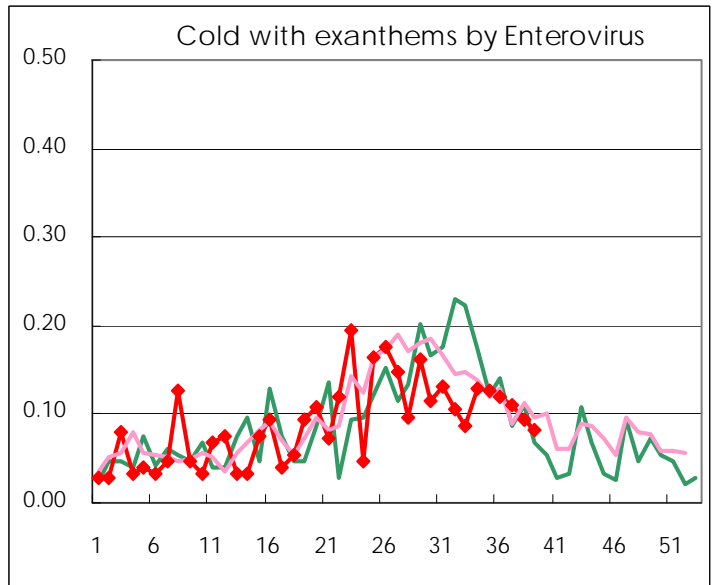
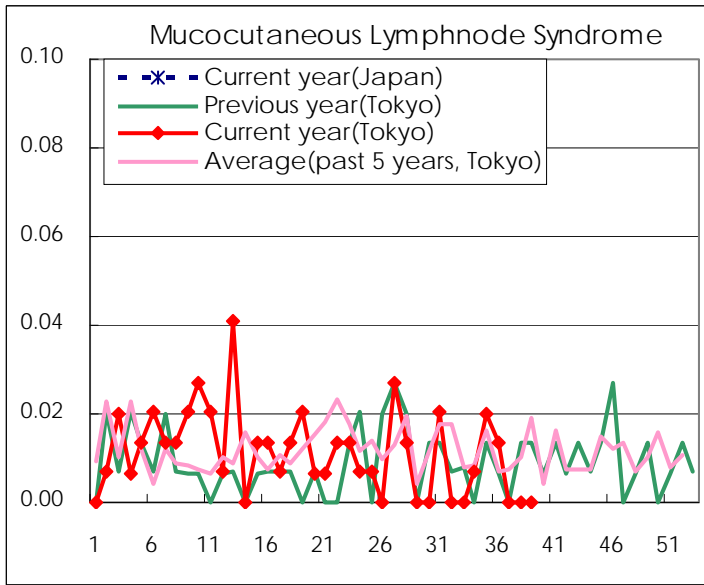
Diseases	2010				
	36th	37th	38th	39th	/sentinel
Respiratory syncytial virus infection	6	11	11	25	0.17
Pharyngoconjunctival fever	35	43	18	27	0.18
Group A streptococcal pharyngitis	111	105	106	160	1.09
Infectious gastroenteritis	616	599	409	512	3.48
Chickenpox	69	50	54	104	0.71
Hand, foot, and mouth disease	148	146	94	90	0.61
Erythema infectiosum	49	33	32	36	0.24
Exanthem subitum	125	113	92	96	0.65
Pertussis	8	14	4	7	0.05
Herpangina	89	91	49	20	0.14
Mumps	88	89	53	74	0.50
Cold with exanthems by Enterovirus	18	16	14	12	0.08
Mucocutaneous Lymphnode Syndrome	2				
Influenza	19	28	20	27	0.09
Acute hemorrhagic conjunctivitis	1		2	1	0.03
Epidemic keratoconjunctivitis	31	39	17	17	0.44
Bacterial meningitis					
Aseptic meningitis	1			1	0.04
Mycoplasma pneumonia	1	5	4	5	0.22
Chlamydial pneumonia (excluding psittacosis)			1		

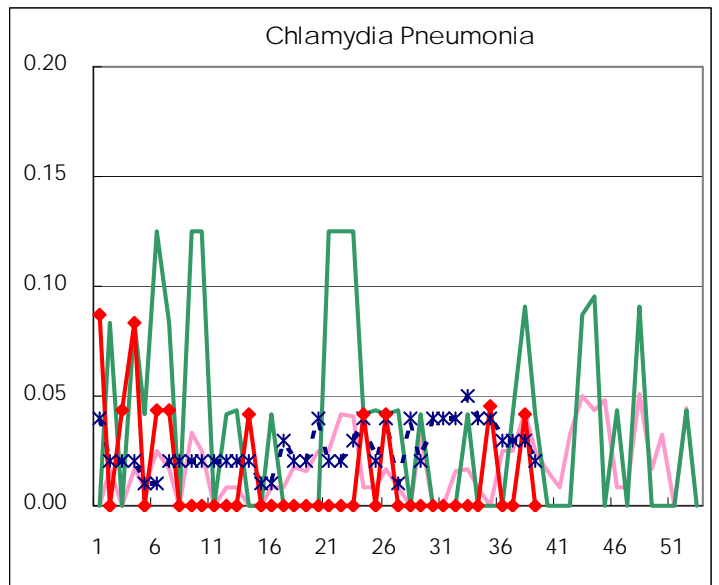
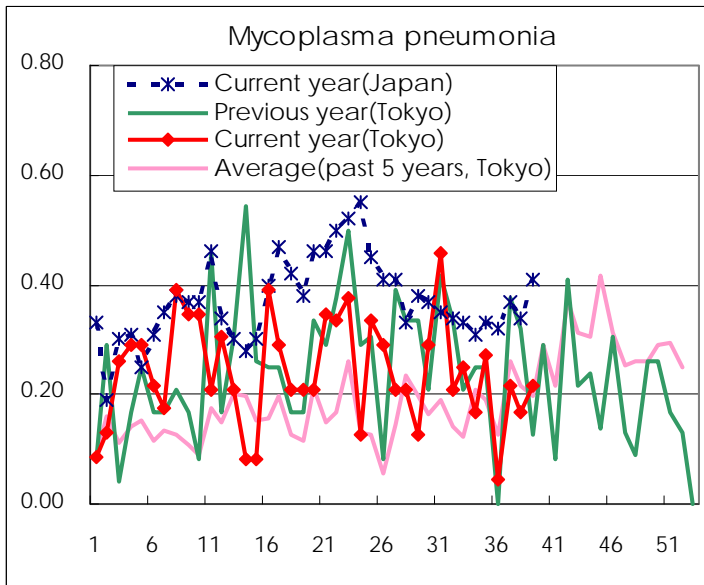
(Blank means 0.)

Disease Trend Graph (weekly reported cases per sentinel in comparison)









Number of sentinel facilities for weekly reporting		
Types of sentinels	Number of sentinels	Sentinels having reported
Pediatric	150	147
Influenza	290	285
Ophthalmic	39	39
Specially-designated	25	23

Tokyo Metropolitan Government
Infectious Disease Surveillance Center