
INFECTIOUS DISEASES WEEKLY REPORT

TOKYO IDWR

Tokyo Metropolitan Infectious Disease Surveillance Center

14 October 2010 / Number 40

Surveillance System in Tokyo, Japan

The infectious diseases which all physicians must report

All physicians must report to health centers the incidence of the diseases which are shown at page one. Health centers electronically report the individual cases to Tokyo Metropolitan Infectious Disease Surveillance Center.

The infectious diseases required to be reported by the sentinels

The numbers of patients who visit the sentinel clinics or hospitals during a week are reported to health centers in Tokyo. And they electronically report the numbers to Tokyo Metropolitan Infectious Disease Surveillance Center. We have about 400 sentinel clinics and hospitals in Tokyo.

1st Week is early January and 52nd Week is end of December.

Tokyo Metropolitan Institute of Public Health
Epidemiological Information Office

TEL:81-3-3363-3213 FAX:81-3-5332-7365
e-mail:idsc@tokyo-eiken.go.jp
URL:idsc.tokyo-eiken.go.jp/

Number of patients with the diseases which all physicians must report

Category	Diseases	Tokyo				Japan		
		37th	38th	39th	40th	Cum 2010	40th	Cum 2010
I	Ebola hemorrhagic fever							
	Crimean-Congo hemorrhagic fever							
	Smallpox							
	South American hemorrhagic fever							
	Plague							
	Marburg disease							
	Lassa fever							
II	Acute poliomyelitis							2
	Tuberculosis	64	44	64	33	3,078	265	19,394
	Diphtheria							
	Severe Acute Respiratory Syndrome(SARS)							
Avian influenza H5N1								
III	Cholera					2		10
	Shigellosis	2	1	4	9	69	10	168
	Enterohemorrhagic Escherichia coli infection	22	14	7	8	306	92	3,598
	Typhoid fever				1	8	1	25
	Paratyphoid fever	1				5	1	19
IV	Hepatitis E					7	1	49
	West Nile fever							
	Hepatitis A	2		1		41		309
	Echinococcosis							9
	Yellow fever							
	Psittacosis							9
	Omsk hemorrhagic fever							
	Relapsing fever							
	Kyasanur forest disease							
	Q fever							2
	Rabies							
	Coccidioidomycosis							
	Monkeypox							
	Hemorrhagic fever with renal syndrome							
	Western equine encephalitis							
	Tick-borne encephalitis							
	Anthrax							
	Scrub typhus(Tsutsugamushi disease)					5	1	115
	Dengue fever	5	3	6	2	55	9	196
	Eastern equine encephalitis							
	Avian influenza (excluding H5N1)							
	Nipah virus infection							
	Japanese spotted fever					1	1	89
	Japanese encephalitis						1	2
	Epidemic typhus							
	Hantavirus pulmonary syndrome							
	Herpes B virus infection							
	Glanders							
	Brucellosis							2
	Venezuelan equine encephalitis							
	Hendra virus infection							
Botulism								
Malaria	2				23		58	
Tularemia								
Lyme disease					1		11	
Lyssavirus infection(excluding rabies)								
Rift valley fever								
Melioidosis					1		3	
Legionellosis	1		2	3	33	11	557	
Leptospirosis					2	3	16	
Rocky mountain spotted fever								

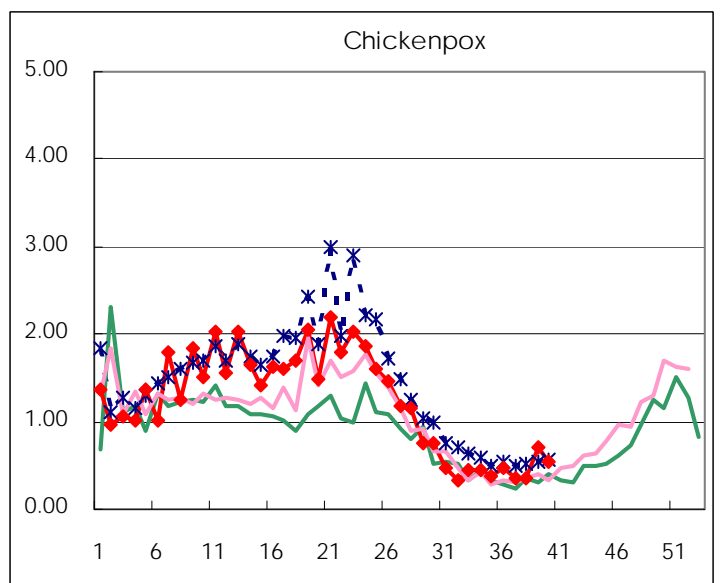
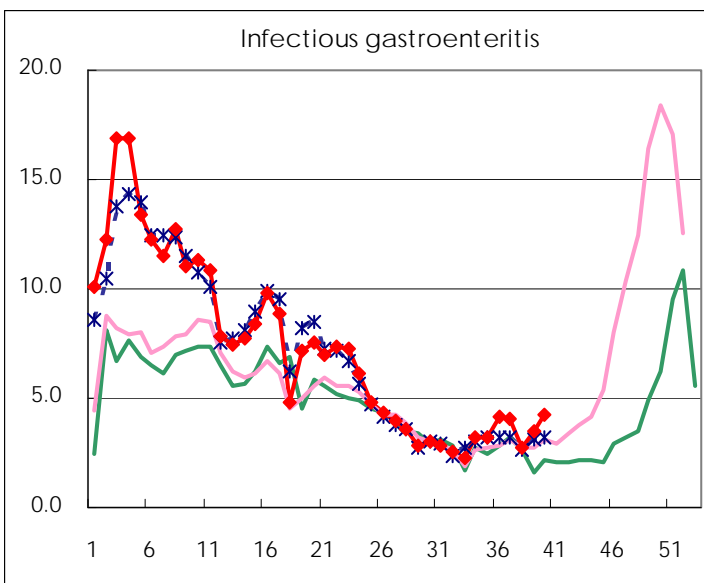
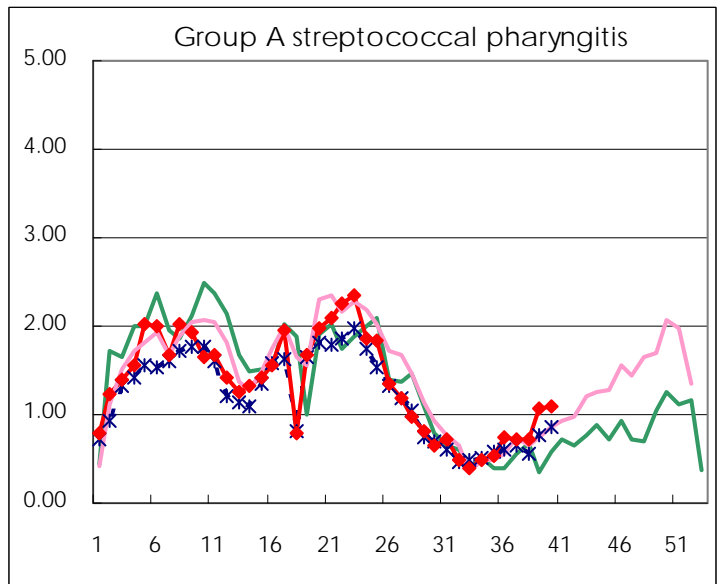
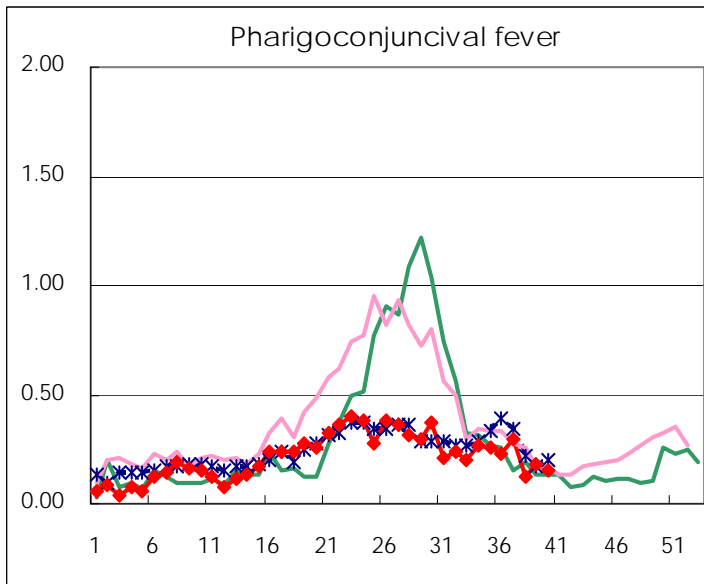
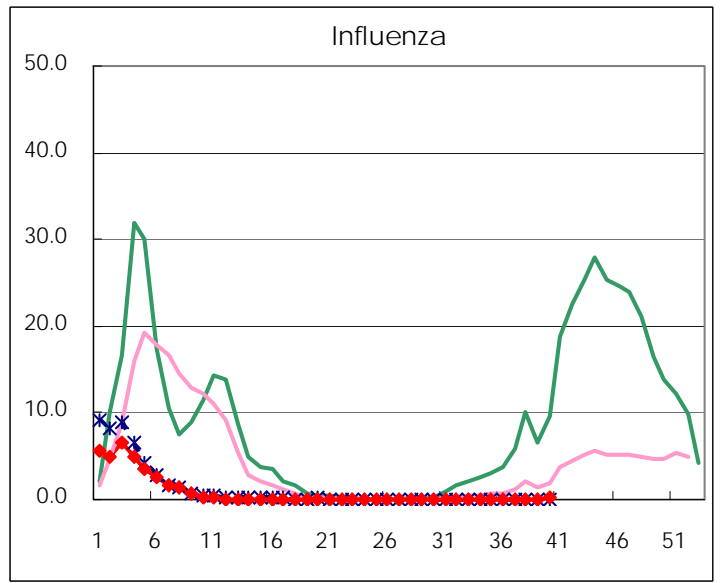
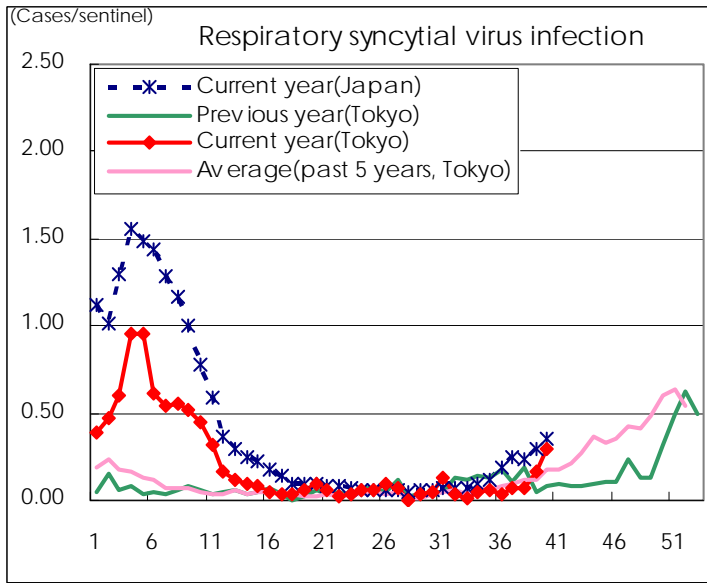
Category	Diseases	Tokyo					Japan	
		37th	38th	39th	40th	Cum 2010	40th	Cum 2010
V	Amebiasis	7	2	4	2	136	10	647
	Viral hepatitis(excluding hepatitis A and E)	1		1	1	32	1	156
	Acute encephalitis(excluding JE and WNE)			1	1	14		181
	Cryptosporidiosis					3		16
	Creutzfeldt-Jakob disease				1	11	2	124
	Severe invasive streptococcal infections(TSLS)			1		15	1	94
	Acquired immunodeficiency syndrome (AIDS)	14	7	21	15	381	13	1,125
	Giardiasis		2			11	1	62
	Meningococcal meningitis							6
	Congenital rubella syndrome							
	Syphilis	5	2	7	5	133	12	470
	Tetanus					3	2	80
	Vancomycin-resistant S. aureus infection							
	Vancomycin-resistant Enterococcus infection		1			12	1	82
	Rubella					11		72
Measles			3	2	66	2	396	
Novel Flu	Novel influenza (pandemic A/H1N1 2009)						—	

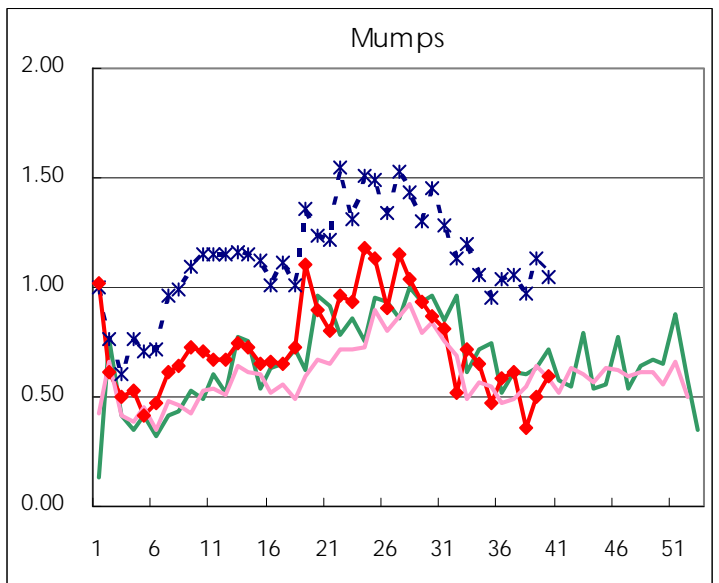
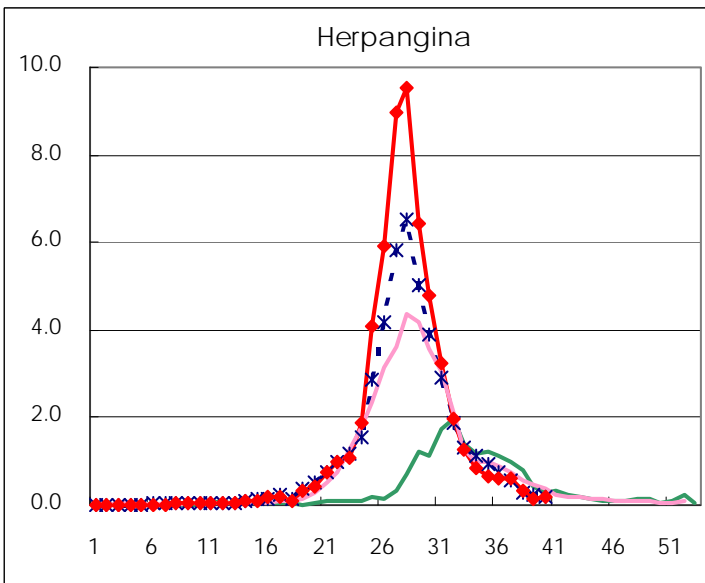
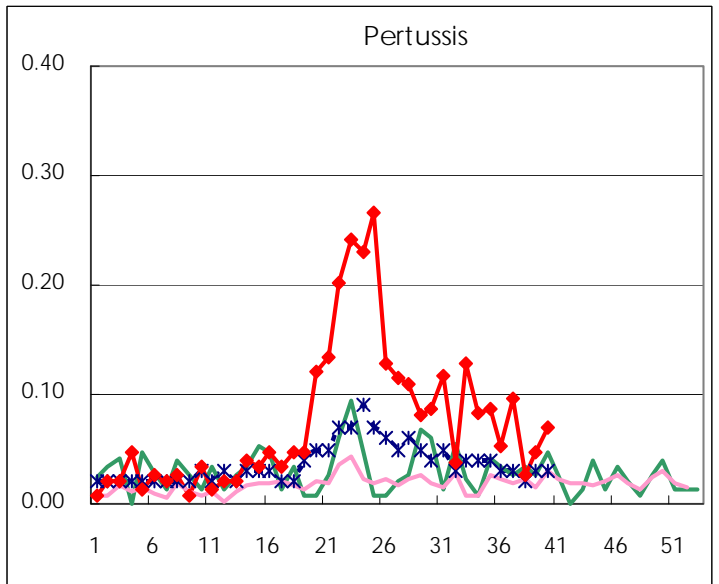
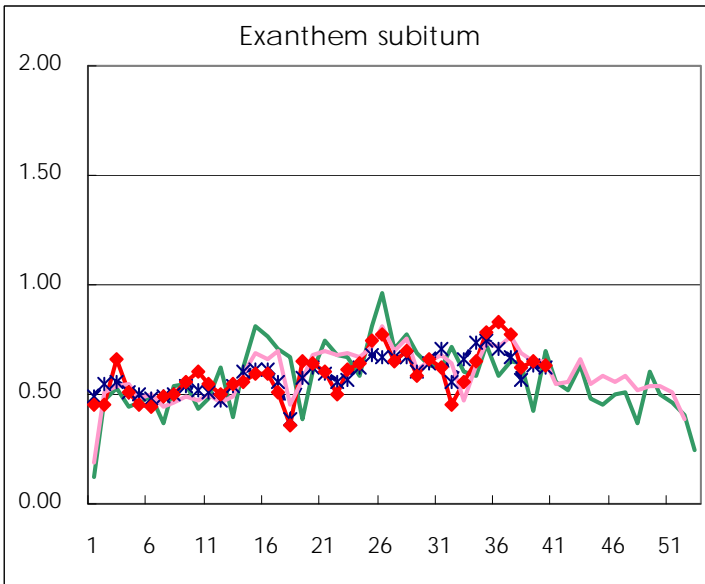
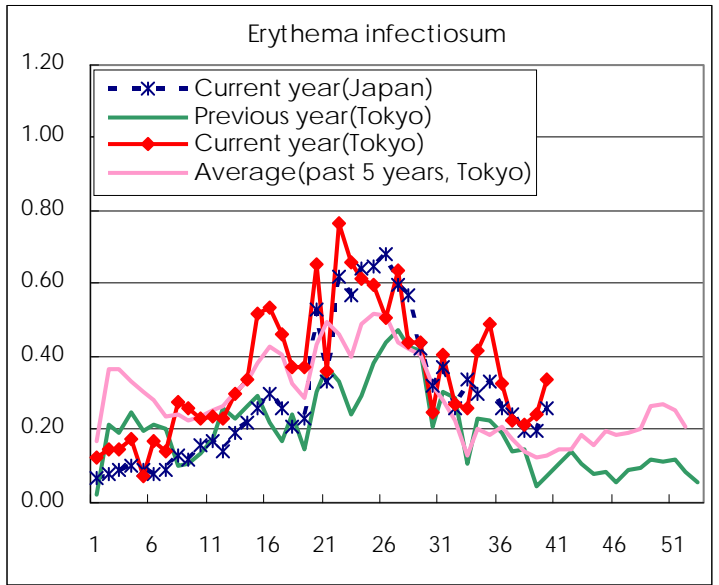
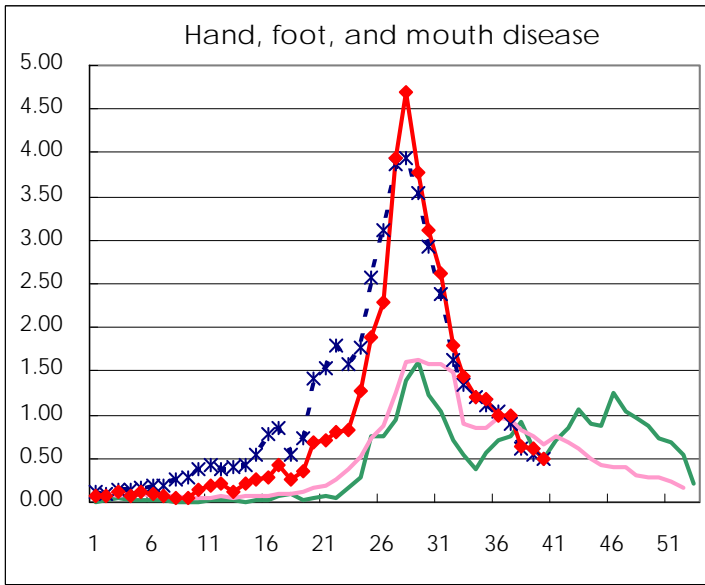
Number of patients with the diseases to be reported
by the designated clinics and hospitals

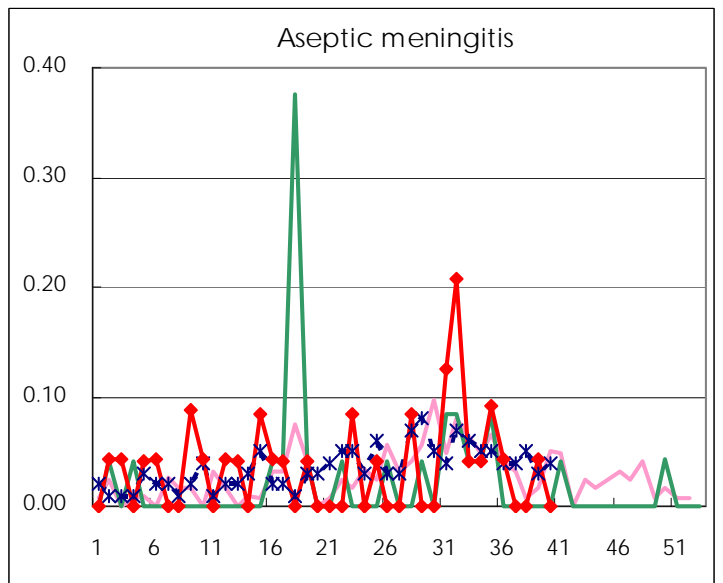
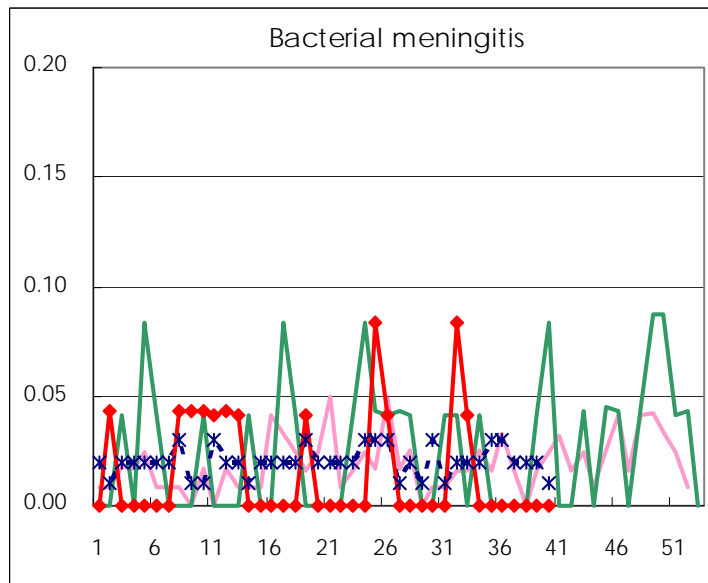
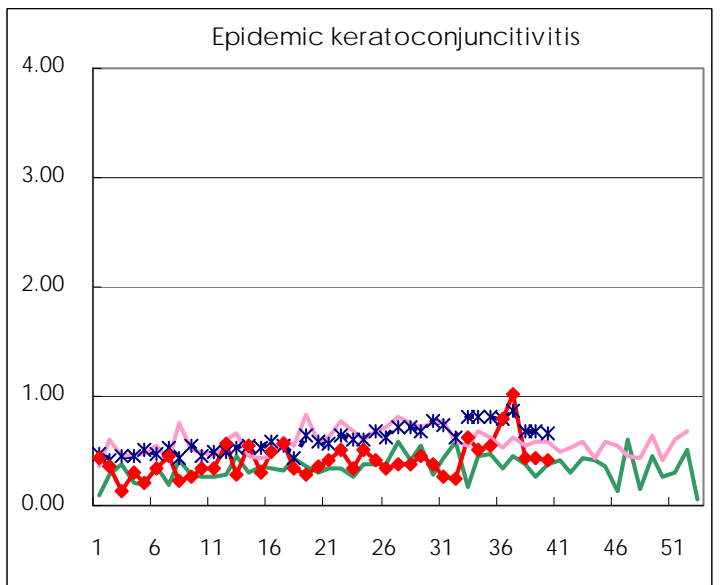
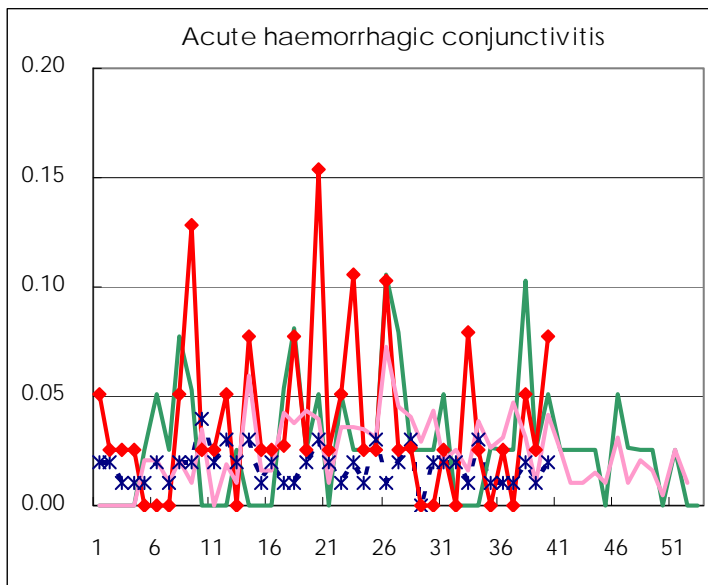
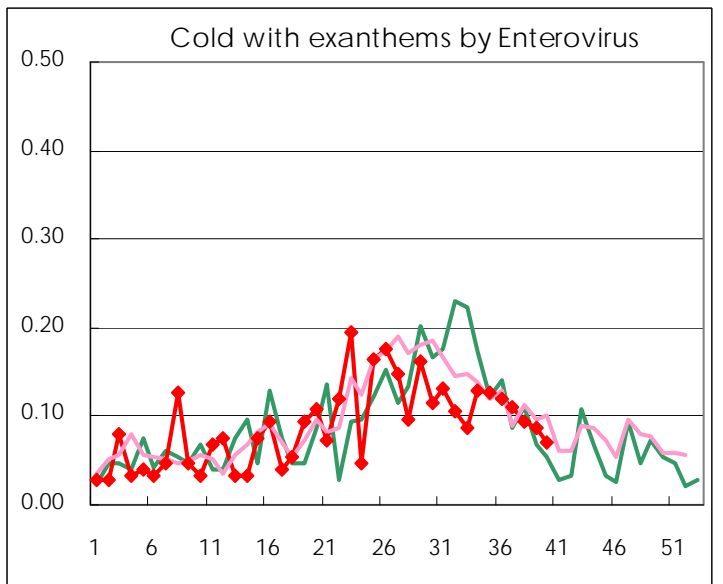
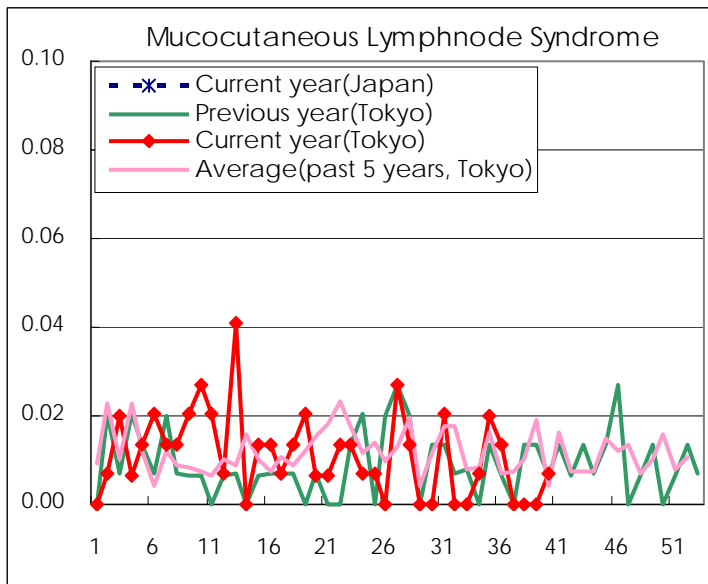
Diseases	2010				
	37th	38th	39th	40th	/sentinel
Respiratory syncytial virus infection	11	11	25	42	0.29
Pharyngoconjunctival fever	43	18	27	22	0.15
Group A streptococcal pharyngitis	105	106	160	156	1.08
Infectious gastroenteritis	599	409	513	606	4.21
Chickenpox	50	54	104	77	0.53
Hand, foot, and mouth disease	146	94	90	72	0.50
Erythema infectiosum	33	32	36	49	0.34
Exanthem subitum	113	92	96	91	0.63
Pertussis	14	4	7	10	0.07
Herpangina	91	49	20	28	0.19
Mumps	89	53	74	86	0.60
Cold with exanthems by Enterovirus	16	14	13	10	0.07
Mucocutaneous Lymphnode Syndrome				1	0.01
Influenza	28	20	27	41	0.15
Acute hemorrhagic conjunctivitis		2	1	3	0.08
Epidemic keratoconjunctivitis	39	17	17	16	0.41
Bacterial meningitis					
Aseptic meningitis			1		
Mycoplasma pneumonia	5	4	5	19	0.86
Chlamydial pneumonia (excluding psittacosis)		1			

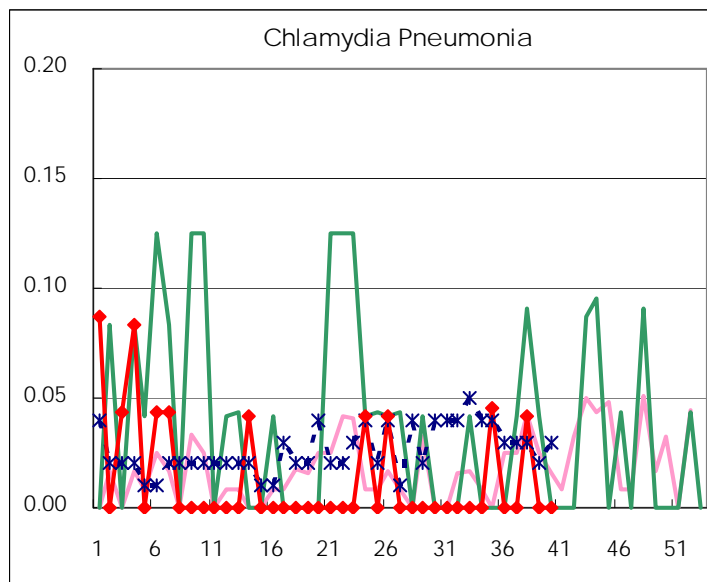
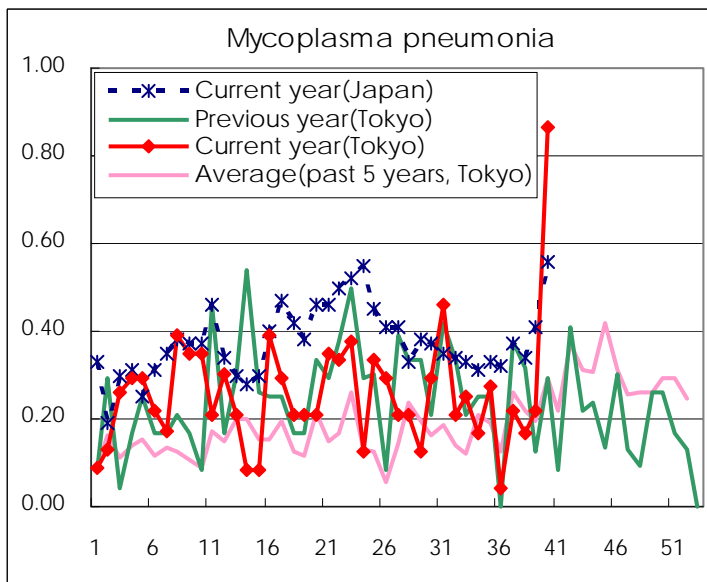
(Blank means 0.)

Disease Trend Graph (weekly reported cases per sentinel in comparison)









Number of sentinel facilities for weekly reporting		
Types of sentinels	Number of sentinels	Sentinels having reported
Pediatric	150	144
Influenza	290	279
Ophthalmic	39	39
Specially-designated	25	22

Tokyo Metropolitan Government
Infectious Disease Surveillance Center