
INFECTIOUS DISEASES WEEKLY REPORT

TOKYO IDWR

Tokyo Metropolitan Infectious Disease Surveillance Center

21 October 2010 / Number 41

Surveillance System in Tokyo, Japan

The infectious diseases which all physicians must report

All physicians must report to health centers the incidence of the diseases which are shown at page one. Health centers electronically report the individual cases to Tokyo Metropolitan Infectious Disease Surveillance Center.

The infectious diseases required to be reported by the sentinels

The numbers of patients who visit the sentinel clinics or hospitals during a week are reported to health centers in Tokyo. And they electronically report the numbers to Tokyo Metropolitan Infectious Disease Surveillance Center. We have about 400 sentinel clinics and hospitals in Tokyo.

1st Week is early January and 52nd Week is end of December.

Tokyo Metropolitan Institute of Public Health
Epidemiological Information Office

TEL:81-3-3363-3213 FAX:81-3-5332-7365
e-mail:idsc@tokyo-eiken.go.jp
URL:idsc.tokyo-eiken.go.jp/

Number of patients with the diseases which all physicians must report

Category	Diseases	Tokyo				Japan		
		38th	39th	40th	41st	Cum 2010	41st	Cum 2010
I	Ebola hemorrhagic fever							
	Crimean-Congo hemorrhagic fever							
	Smallpox							
	South American hemorrhagic fever							
	Plague							
	Marburg disease							
	Lassa fever							
II	Acute poliomyelitis							2
	Tuberculosis	44	65	43	28	3,131	250	19,906
	Diphtheria							
	Severe Acute Respiratory Syndrome(SARS)							
	Avian influenza H5N1							
III	Cholera					2		10
	Shigellosis	1	4	10	2	72	11	183
	Enterohemorrhagic Escherichia coli infection	14	7	8	7	313	59	3,674
	Typhoid fever			1		8		25
	Paratyphoid fever					5		19
IV	Hepatitis E					7		50
	West Nile fever							
	Hepatitis A		1			41	2	313
	Echinococcosis							9
	Yellow fever							
	Psittacosis							9
	Omsk hemorrhagic fever							
	Relapsing fever							
	Kyasanur forest disease							
	Q fever							2
	Rabies							
	Coccidioidomycosis							
	Monkeypox							
	Hemorrhagic fever with renal syndrome							
	Western equine encephalitis							
	Tick-borne encephalitis							
	Anthrax							
	Scrub typhus(Tsutsugamushi disease)					5	2	118
	Dengue fever	3	6	2	2	57	5	204
	Eastern equine encephalitis							
	Avian influenza (excluding H5N1)							
	Nipah virus infection							
	Japanese spotted fever					1	3	93
	Japanese encephalitis							2
	Epidemic typhus							
	Hantavirus pulmonary syndrome							
	Herpes B virus infection							
	Glanders							
	Brucellosis							2
	Venezuelan equine encephalitis							
	Hendra virus infection							
	Botulism							
Malaria					23	1	59	
Tularemia								
Lyme disease					1		11	
Lyssavirus infection(excluding rabies)								
Rift valley fever								
Melioidosis					1		3	
Legionellosis		2	3	3	36	15	574	
Leptospirosis					2		17	
Rocky mountain spotted fever								

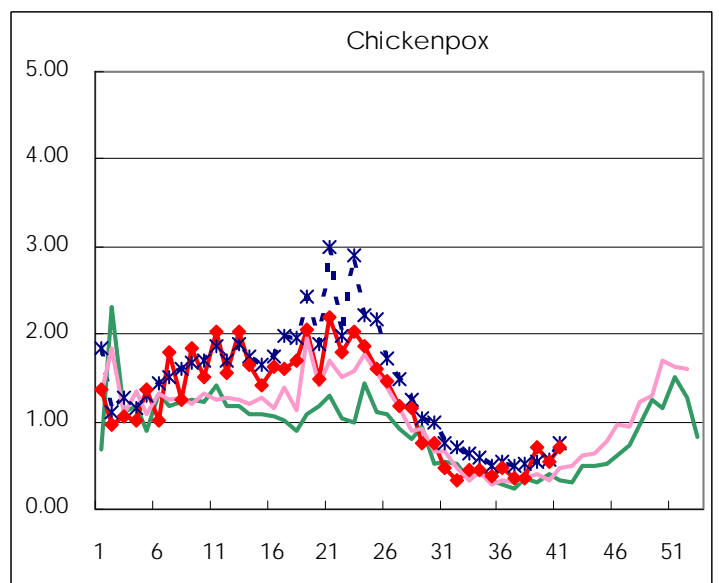
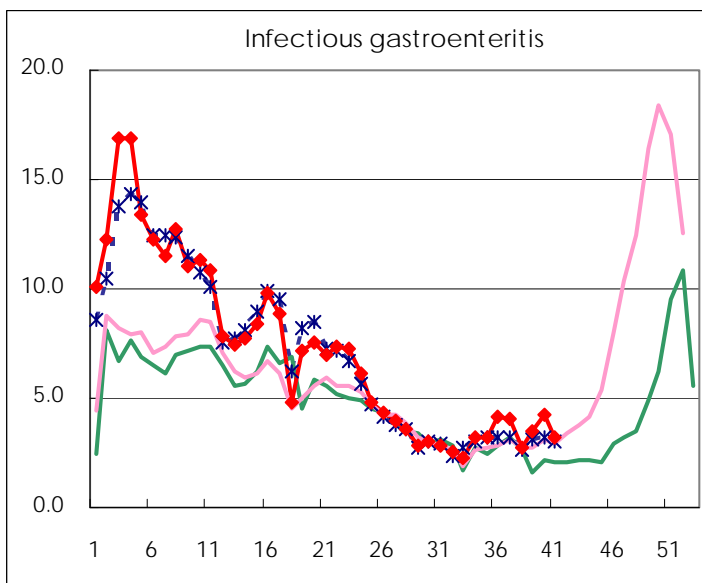
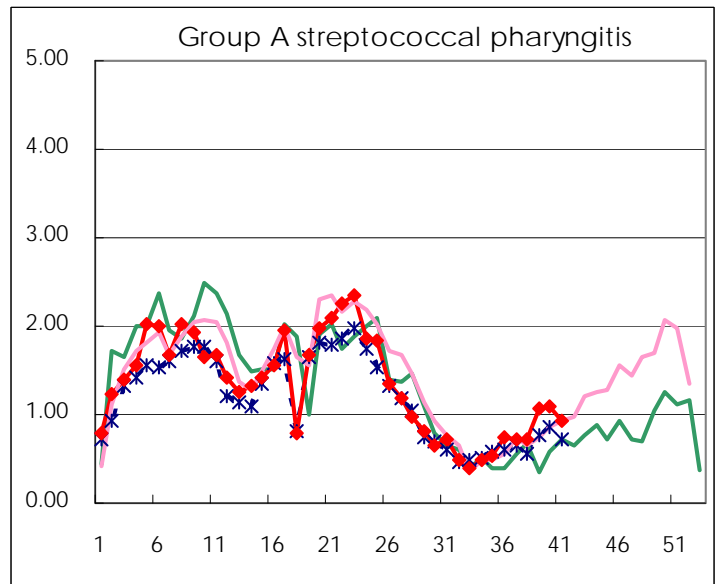
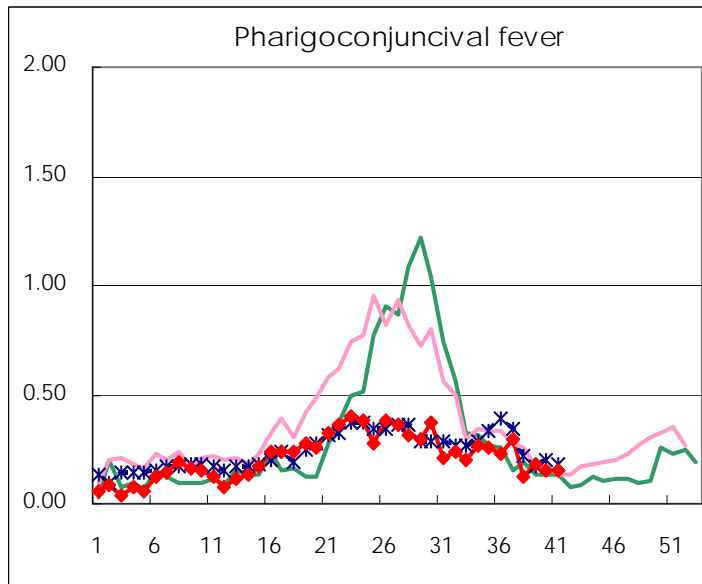
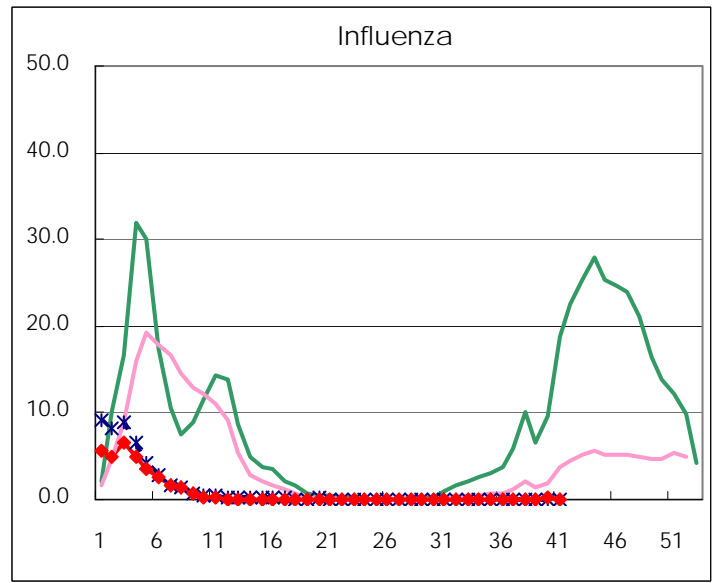
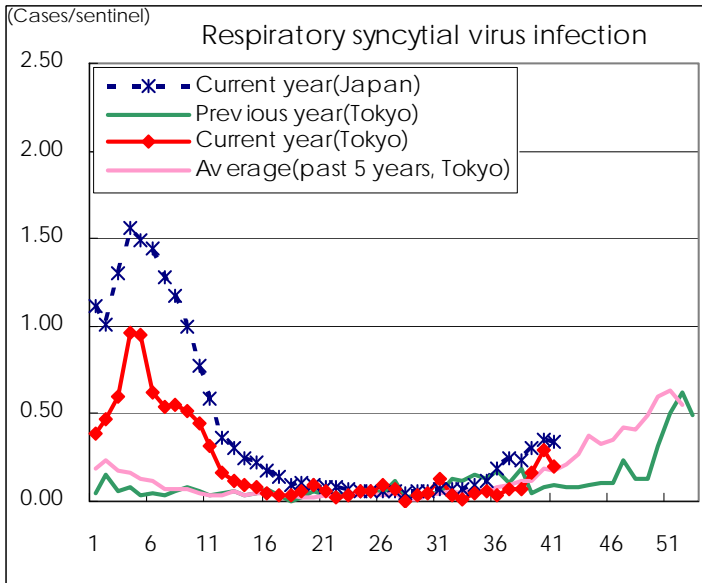
Category	Diseases	Tokyo				Japan		
		38th	39th	40th	41st	Cum 2010	41st	Cum 2010
V	Amebiasis	2	4	2	1	137	6	664
	Viral hepatitis(excluding hepatitis A and E)		1	1		32		158
	Acute encephalitis(excluding JE and WNE)		1	1		14	1	186
	Cryptosporidiosis					3		16
	Creutzfeldt-Jakob disease			1		11	2	129
	Severe invasive streptococcal infections(TSLS)		1		2	17	1	97
	Acquired immunodeficiency syndrome (AIDS)	7	21	15	18	399	25	1,165
	Giardiasis	2				11		63
	Meningococcal meningitis						1	7
	Congenital rubella syndrome							
	Syphilis	2	7	5	5	138	4	484
	Tetanus				2	5	2	83
	Vancomycin-resistant S. aureus infection							
	Vancomycin-resistant Enterococcus infection	1				12	3	86
	Rubella					11	1	73
Measles		3	2		66	4	404	
Novel Flu	Novel influenza (pandemic A/H1N1 2009)						—	

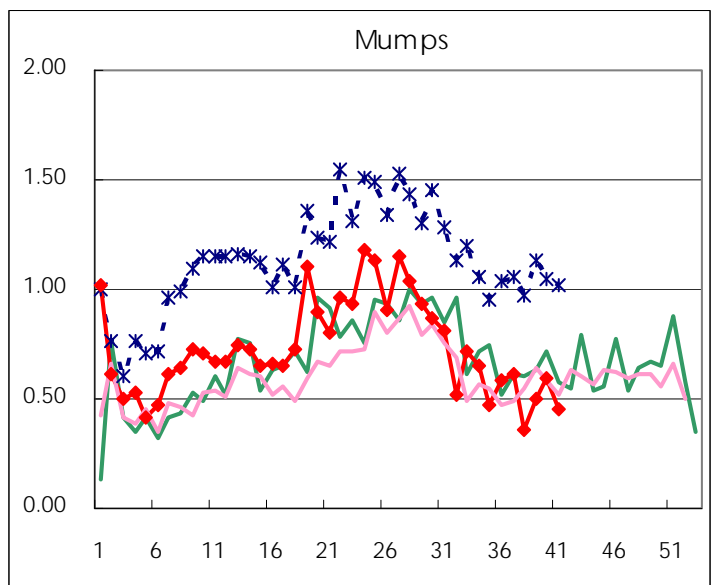
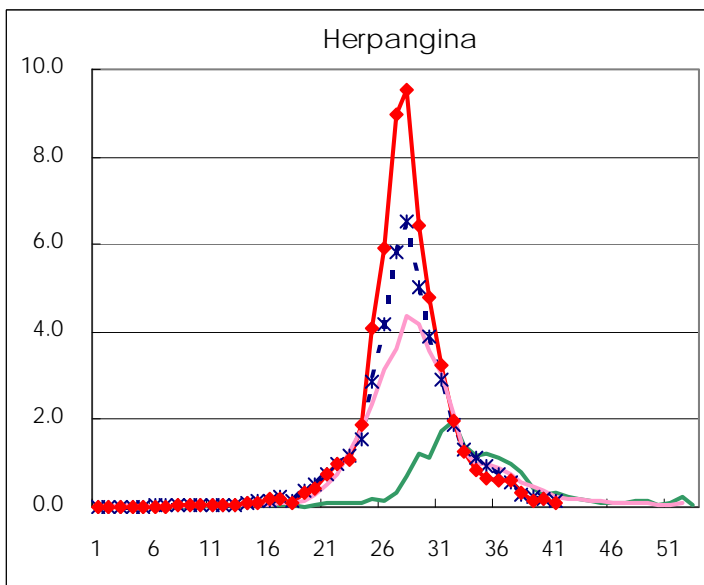
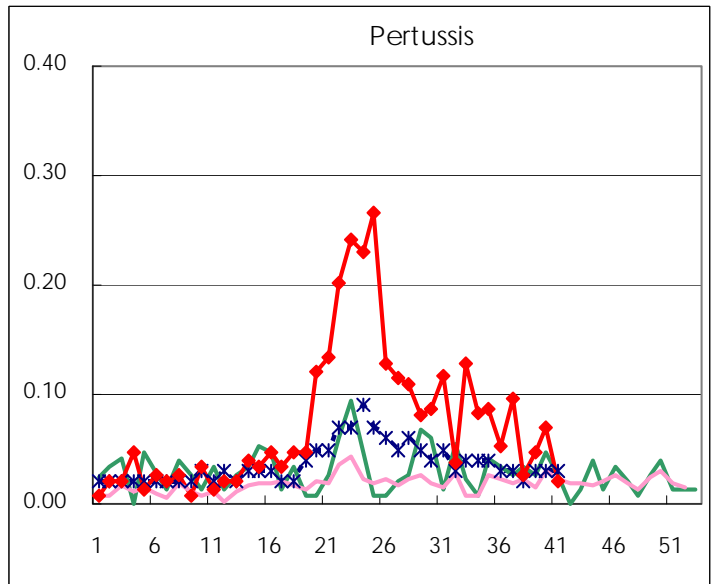
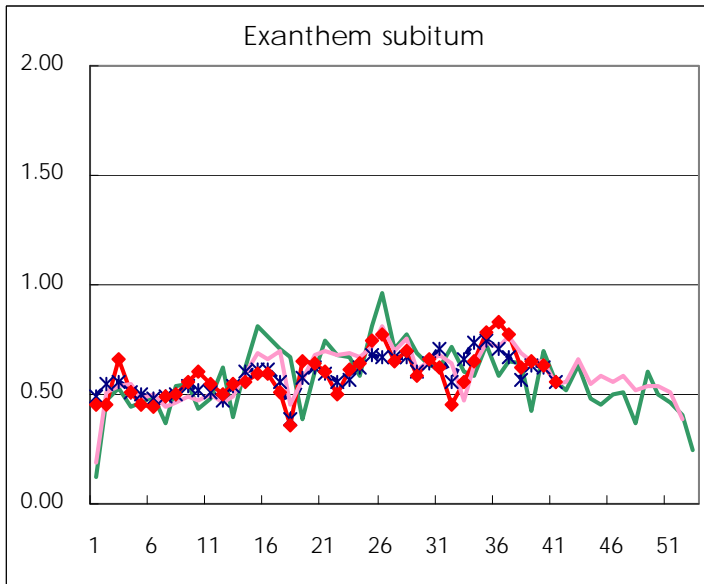
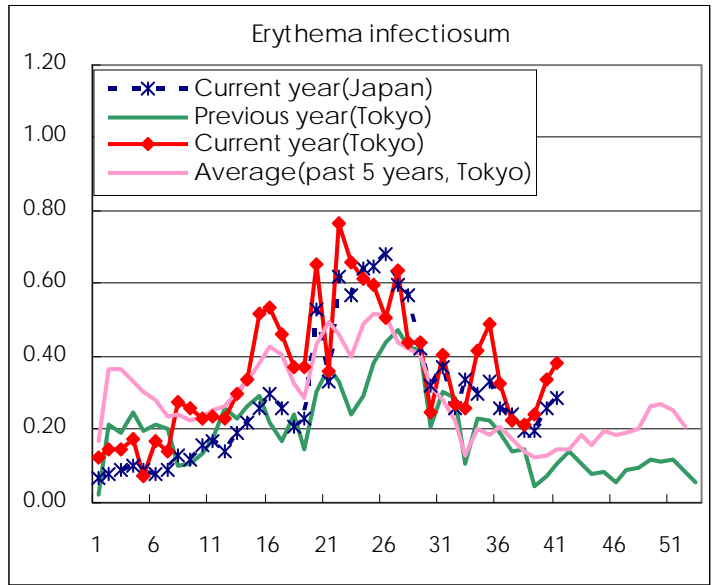
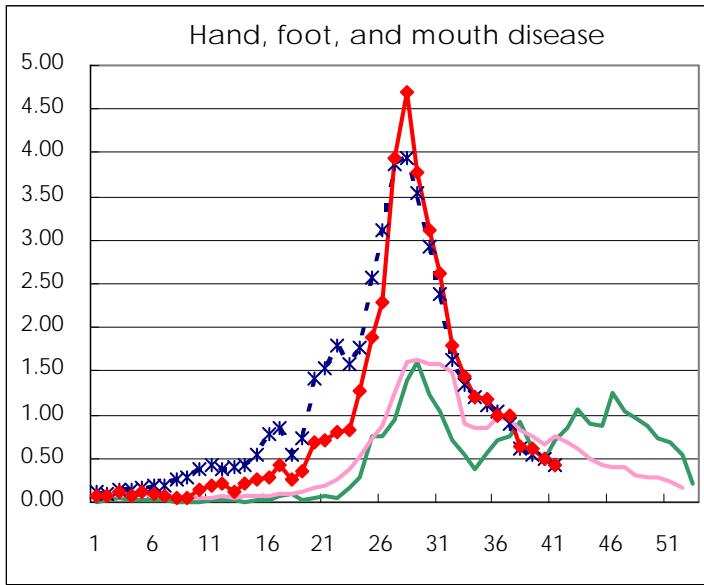
Number of patients with the diseases to be reported
by the designated clinics and hospitals

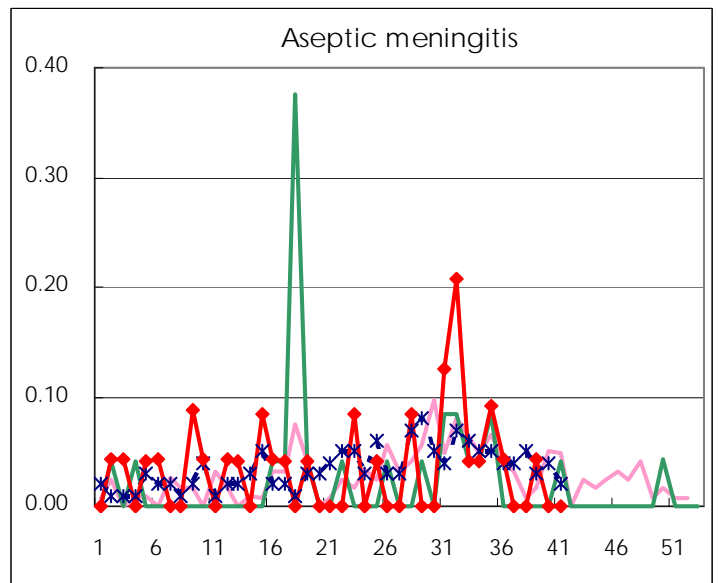
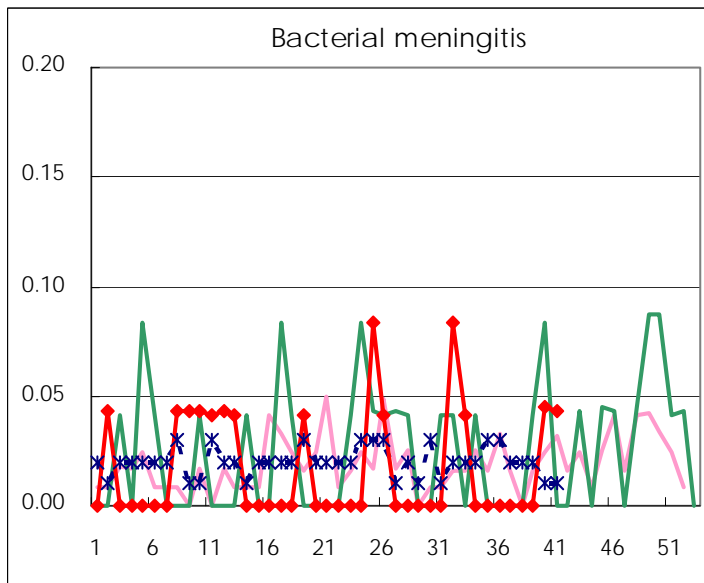
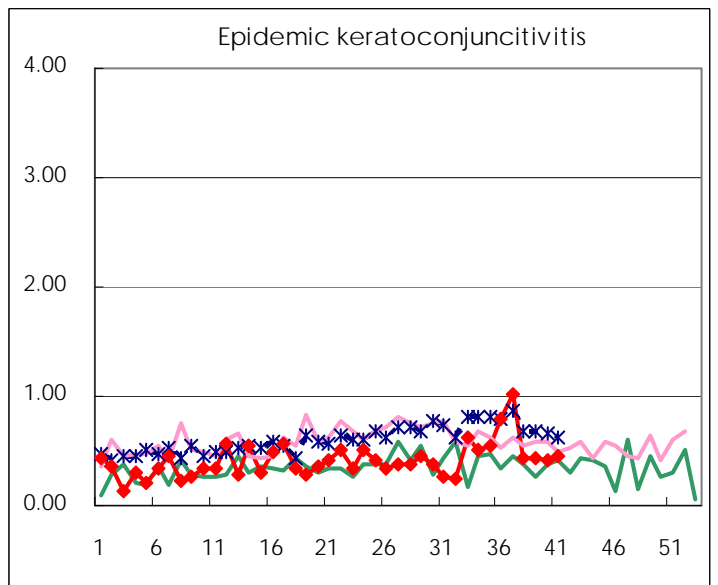
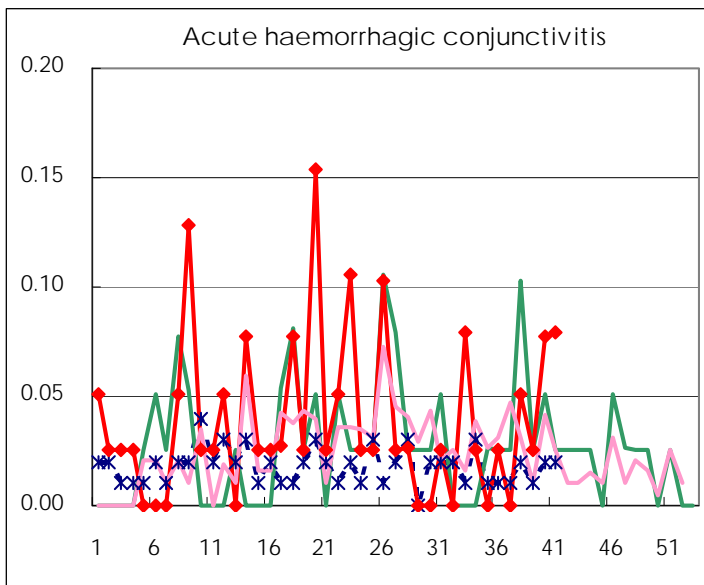
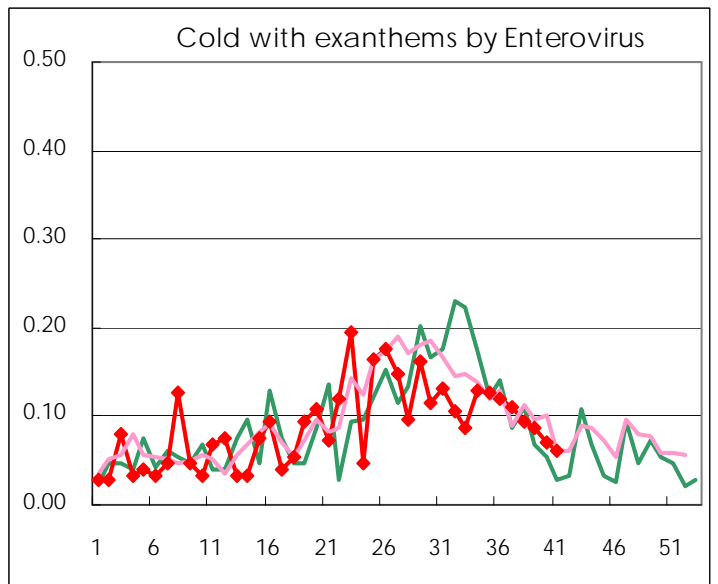
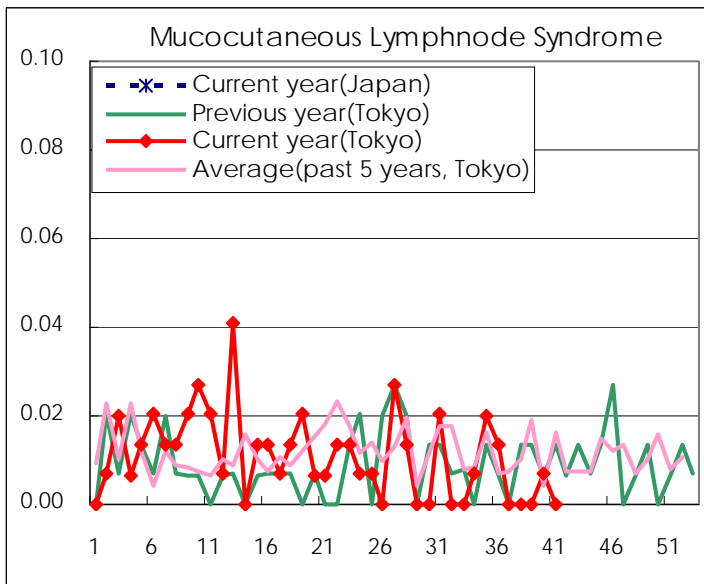
Diseases	2010				
	38th	39th	40th	41st	/sentinel
Respiratory syncytial virus infection	11	25	42	30	0.20
Pharyngoconjunctival fever	18	27	22	23	0.16
Group A streptococcal pharyngitis	106	160	156	138	0.93
Infectious gastroenteritis	409	513	606	475	3.21
Chickenpox	54	104	77	104	0.70
Hand, foot, and mouth disease	94	90	72	64	0.43
Erythema infectiosum	32	36	49	57	0.39
Exanthem subitum	92	96	91	82	0.55
Pertussis	4	7	10	3	0.02
Herpangina	49	20	28	13	0.09
Mumps	53	74	86	67	0.45
Cold with exanthems by Enterovirus	14	13	10	9	0.06
Mucocutaneous Lymphnode Syndrome			1		
Influenza	20	27	41	27	0.09
Acute hemorrhagic conjunctivitis	2	1	3	3	0.08
Epidemic keratoconjunctivitis	17	17	16	17	0.45
Bacterial meningitis			1	1	0.04
Aseptic meningitis		1			
Mycoplasma pneumonia	4	5	20	6	0.26
Chlamydial pneumonia (excluding psittacosis)	1				

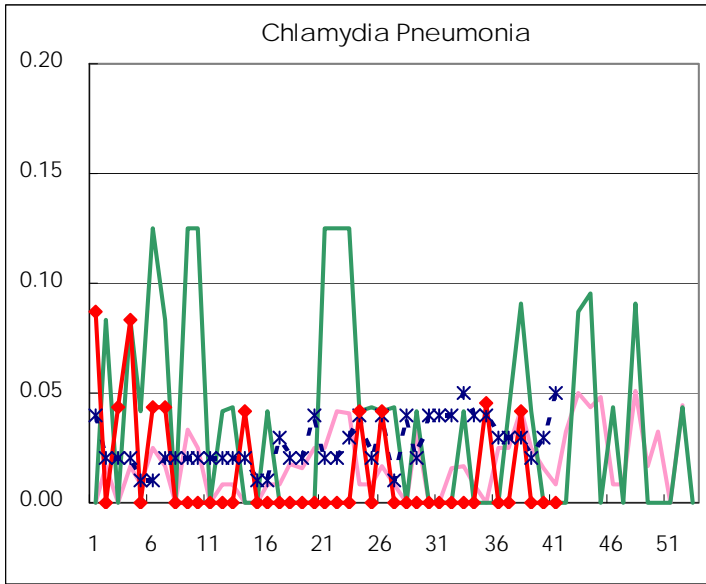
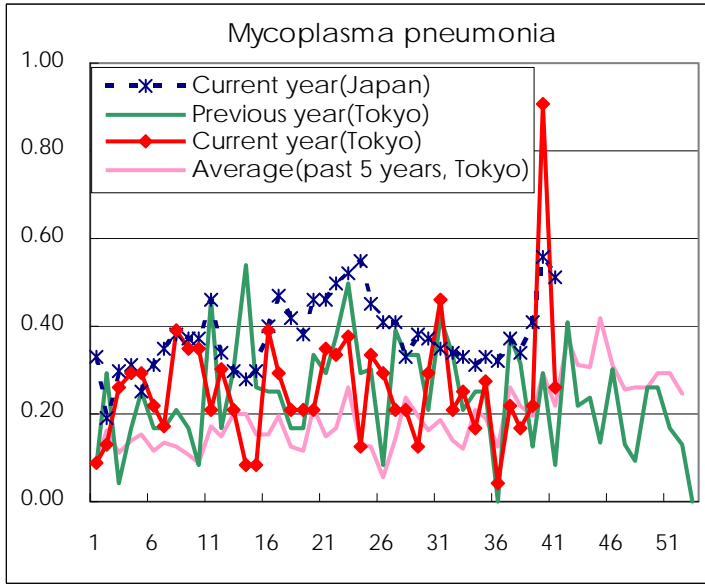
(Blank means 0.)

Disease Trend Graph (weekly reported cases per sentinel in comparison)









Number of sentinel facilities for weekly reporting		
Types of sentinels	Number of sentinels	Sentinels having reported
Pediatric	150	148
Influenza	290	285
Ophthalmic	39	38
Specially-designated	25	23

Tokyo Metropolitan Government
Infectious Disease Surveillance Center