
INFECTIOUS DISEASES WEEKLY REPORT

TOKYO IDWR

Tokyo Metropolitan Infectious Disease Surveillance Center

28 October 2010 / Number 42

Surveillance System in Tokyo, Japan

The infectious diseases which all physicians must report

All physicians must report to health centers the incidence of the diseases which are shown at page one. Health centers electronically report the individual cases to Tokyo Metropolitan Infectious Disease Surveillance Center.

The infectious diseases required to be reported by the sentinels

The numbers of patients who visit the sentinel clinics or hospitals during a week are reported to health centers in Tokyo. And they electronically report the numbers to Tokyo Metropolitan Infectious Disease Surveillance Center. We have about 400 sentinel clinics and hospitals in Tokyo.

1st Week is early January and 52nd Week is end of December.

Tokyo Metropolitan Institute of Public Health
Epidemiological Information Office

TEL:81-3-3363-3213 FAX:81-3-5332-7365

e-mail:idsc@tokyo-eiken.go.jp

URL:idsc.tokyo-eiken.go.jp/

Number of patients with the diseases which all physicians must report

Category	Diseases	Tokyo				Japan		
		39th	40th	41st	42nd	Cum 2010	Cum 2010	
I	Ebola hemorrhagic fever							
	Crimean-Congo hemorrhagic fever							
	Smallpox							
	South American hemorrhagic fever							
	Plague							
	Marburg disease							
	Lassa fever							
II	Acute poliomyelitis						2	
	Tuberculosis	71	53	37	69	3,234	20,466	
	Diphtheria							
	Severe Acute Respiratory Syndrome(SARS)							
	Avian influenza H5N1							
III	Cholera					2	10	
	Shigellosis	4	10	2	4	76	198	
	Enterohemorrhagic Escherichia coli infection	7	8	7	5	318	3,758	
	Typhoid fever		1			8	25	
	Paratyphoid fever					5	19	
IV	Hepatitis E					7	50	
	West Nile fever							
	Hepatitis A	1				41	315	
	Echinococcosis				1	1	9	
	Yellow fever							
	Psittacosis						9	
	Omsk hemorrhagic fever							
	Relapsing fever							
	Kyasanur forest disease							
	Q fever						2	
	Rabies							
	Coccidioidomycosis							
	Monkeypox							
	Hemorrhagic fever with renal syndrome							
	Western equine encephalitis							
	Tick-borne encephalitis							
	Anthrax							
	Scrub typhus(Tsutsugamushi disease)					5	3	123
	Dengue fever	6	2	2	1	58	3	209
	Eastern equine encephalitis							
	Avian influenza (excluding H5N1)							
	Nipah virus infection							
	Japanese spotted fever					1	2	95
	Japanese encephalitis						1	3
	Epidemic typhus							
	Hantavirus pulmonary syndrome							
	Herpes B virus infection							
	Glanders							
	Brucellosis							2
	Venezuelan equine encephalitis							
	Hendra virus infection							
	Botulism							
Malaria				1	24	1	60	
Tularemia								
Lyme disease					1		11	
Lyssavirus infection(excluding rabies)								
Rift valley fever								
Melioidosis					1		3	
Legionellosis	2	3	3	3	39	12	593	
Leptospirosis					2	2	18	
Rocky mountain spotted fever								

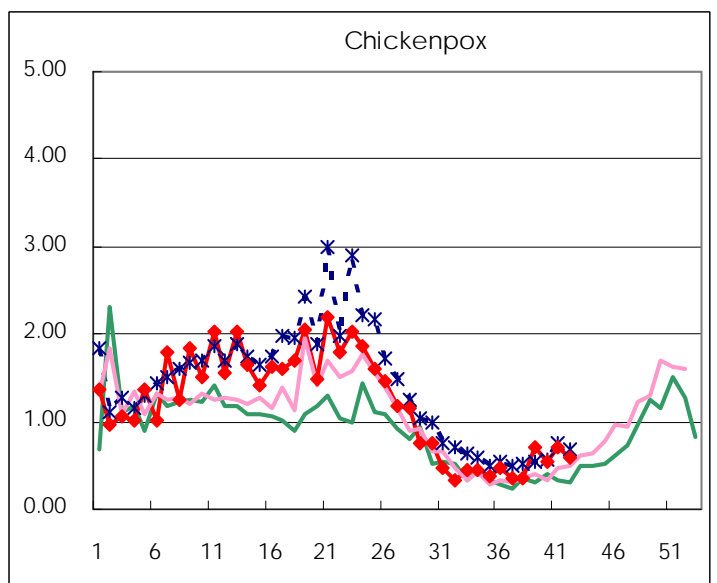
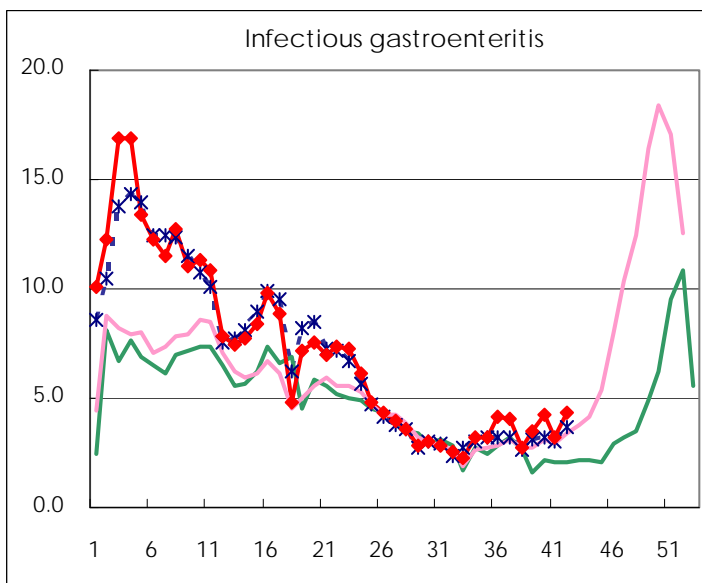
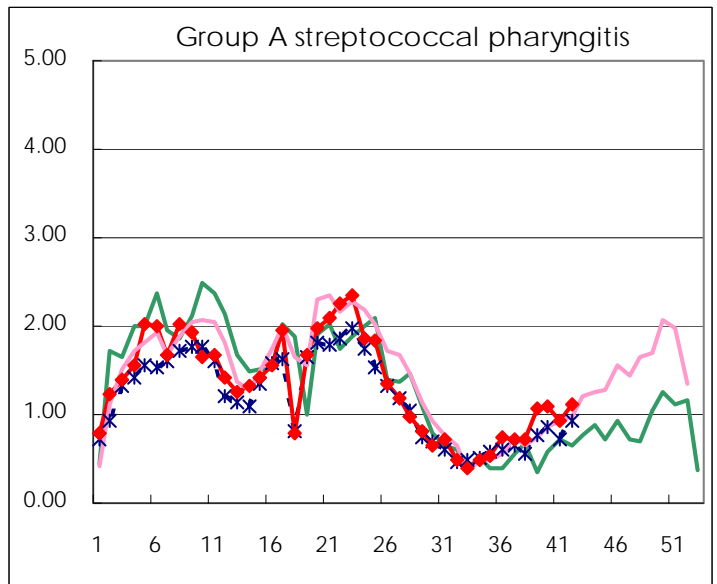
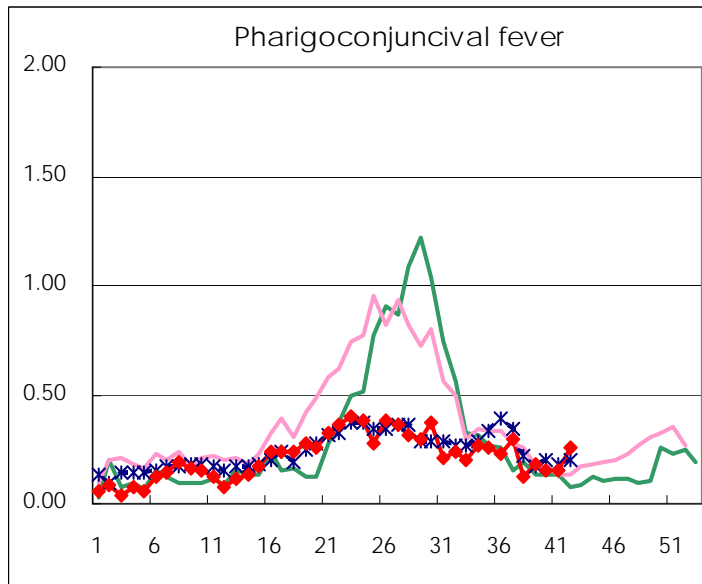
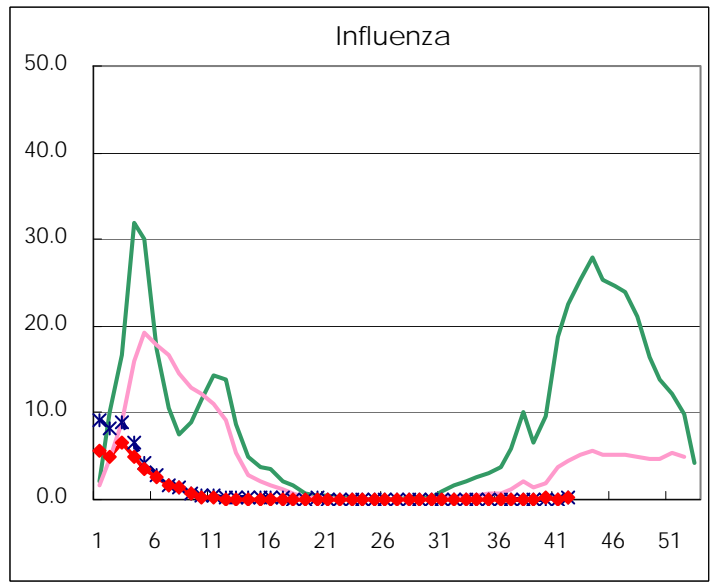
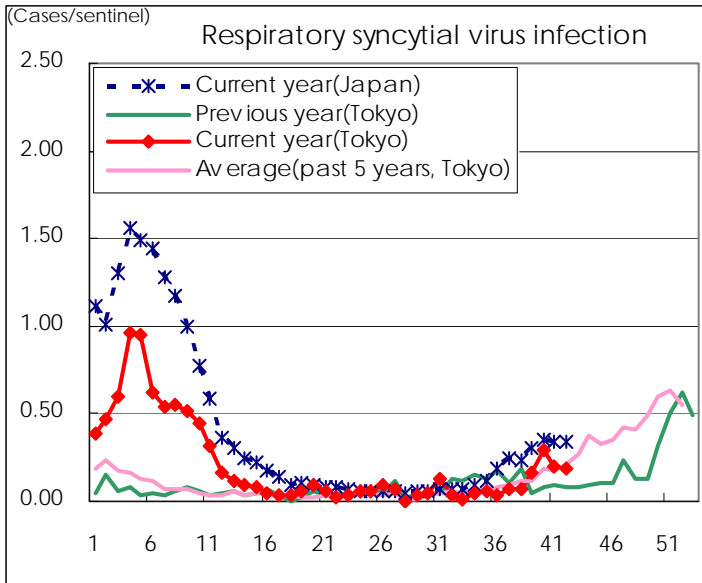
Category	Diseases	Tokyo					Japan	
		39th	40th	41st	42nd	Cum 2010	42nd	Cum 2010
V	Amebiasis	4	2	1	9	146	13	682
	Viral hepatitis(excluding hepatitis A and E)	1	1		9	41	3	167
	Acute encephalitis(excluding JE and WNE)	1	1			14	1	187
	Cryptosporidiosis					3		16
	Creutzfeldt-Jakob disease		1			11	5	137
	Severe invasive streptococcal infections(TSLS)	1		2		17		97
	Acquired immunodeficiency syndrome (AIDS)	21	15	18	11	410	19	1,216
	Giardiasis				1	12	2	67
	Meningococcal meningitis							7
	Congenital rubella syndrome							
	Syphilis	7	4	5	7	144	6	498
	Tetanus			2		5	1	84
	Vancomycin-resistant S. aureus infection							
	Vancomycin-resistant Enterococcus infection					12	1	91
	Rubella					11	1	74
Measles	3	2		2	68	5	408	
Novel Flu	Novel influenza (pandemic A/H1N1 2009)						—	

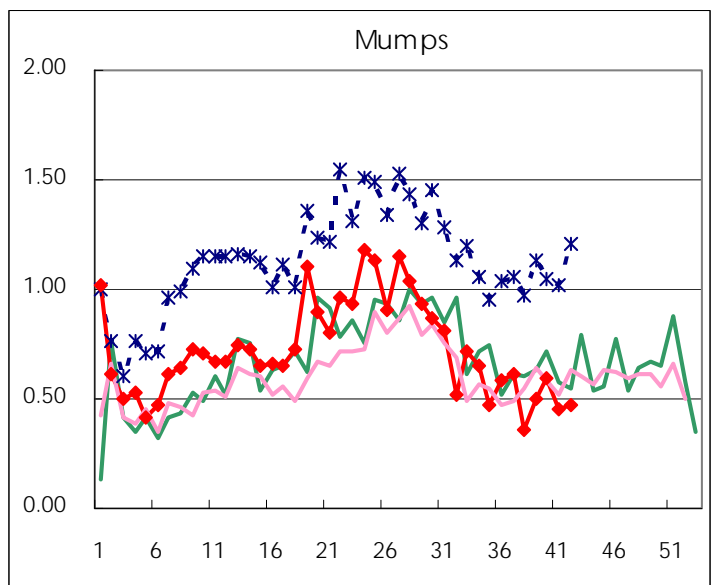
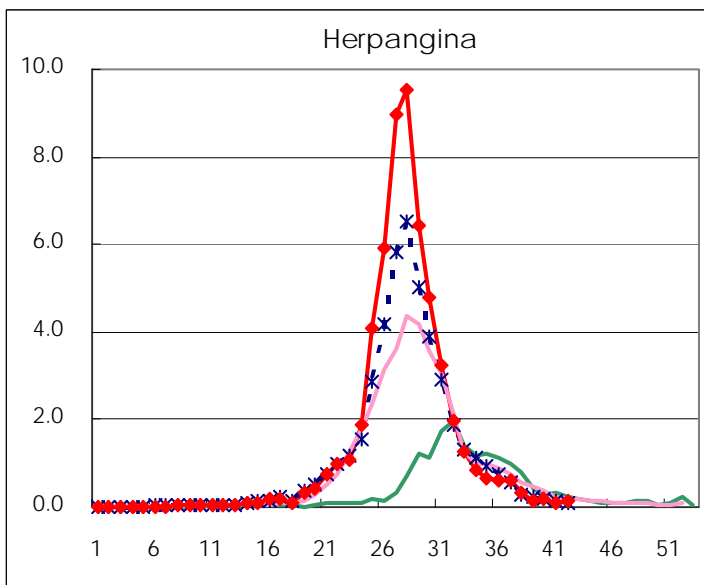
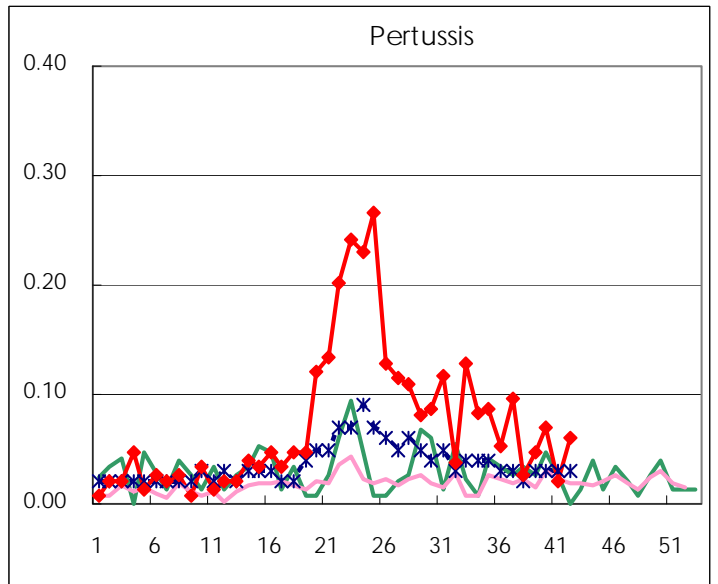
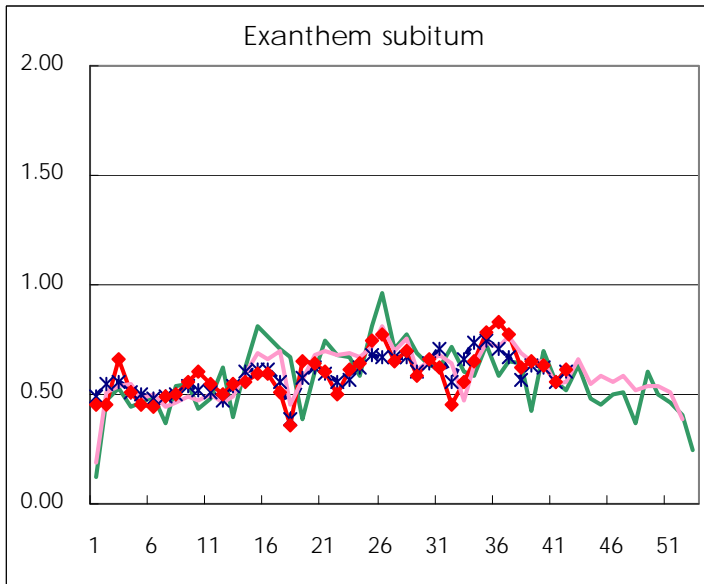
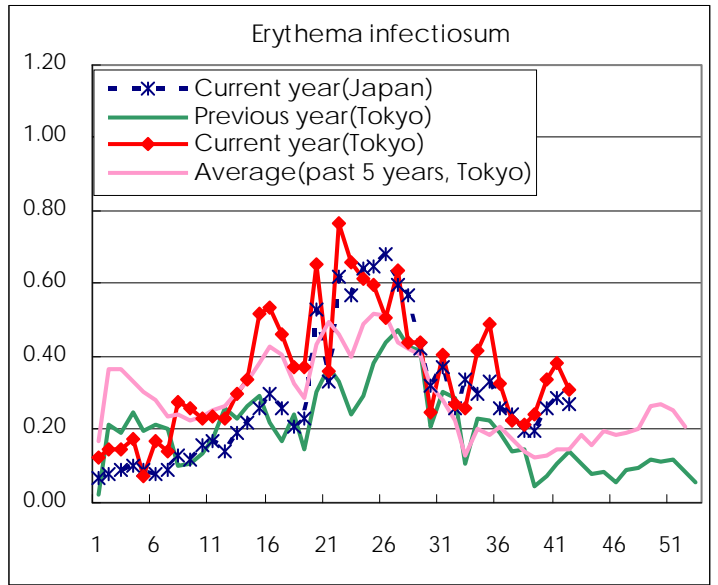
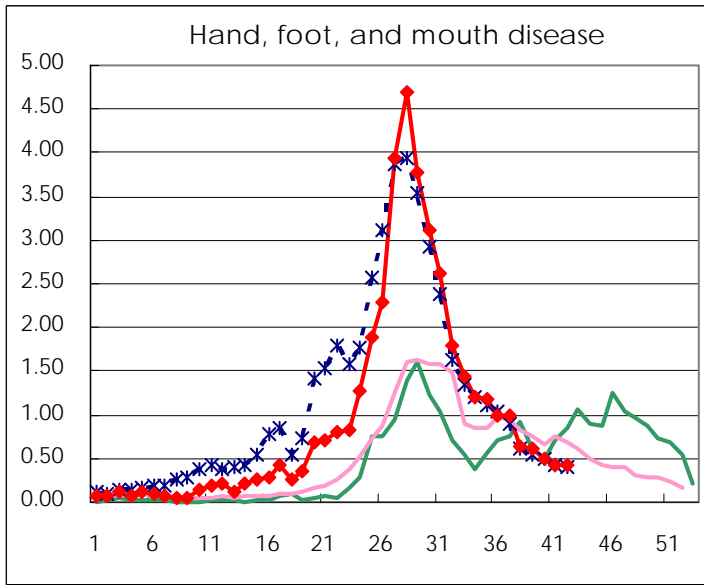
Number of patients with the diseases to be reported
by the designated clinics and hospitals

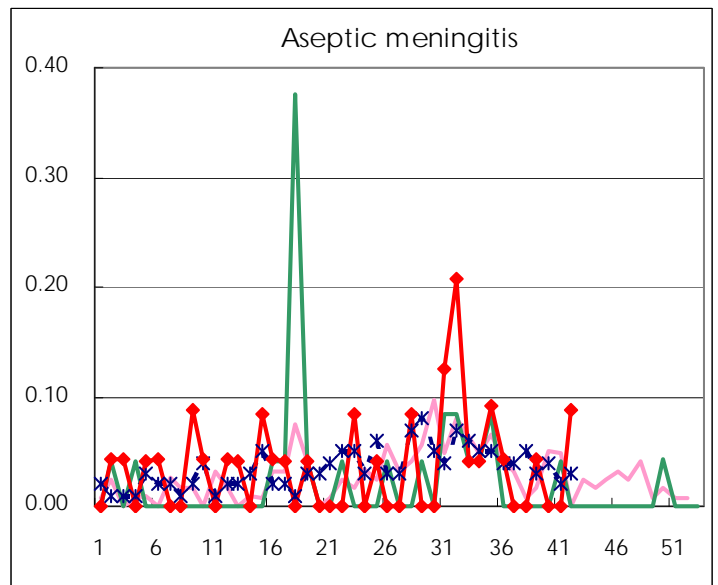
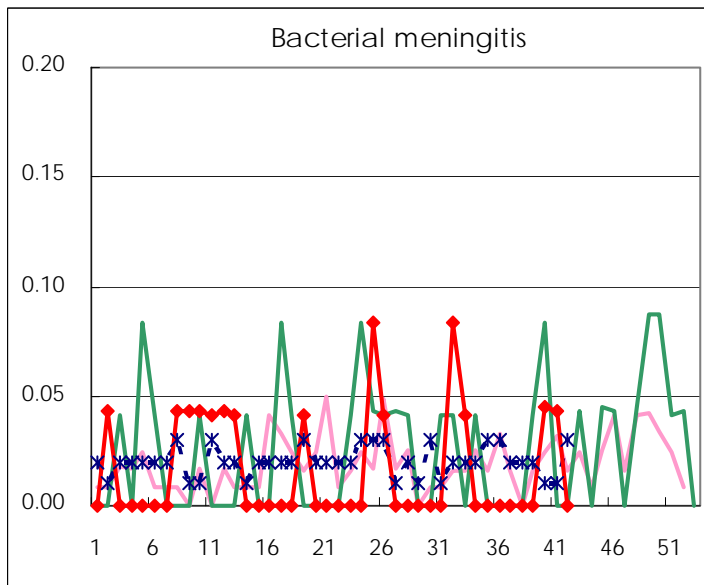
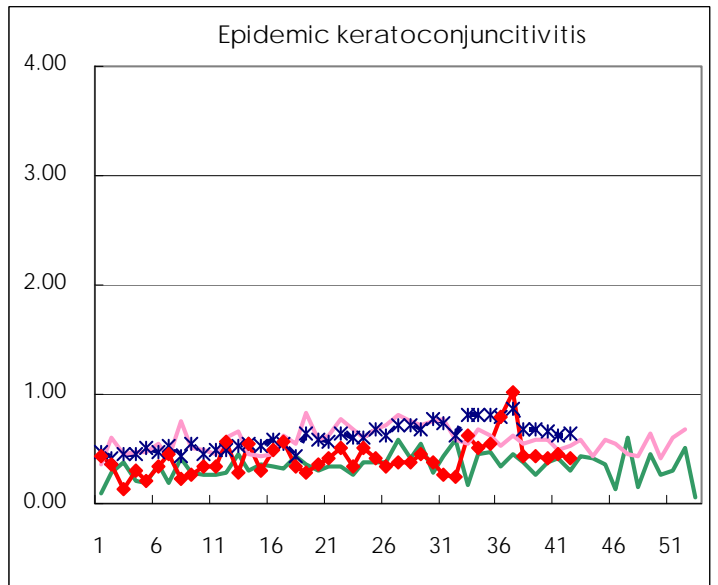
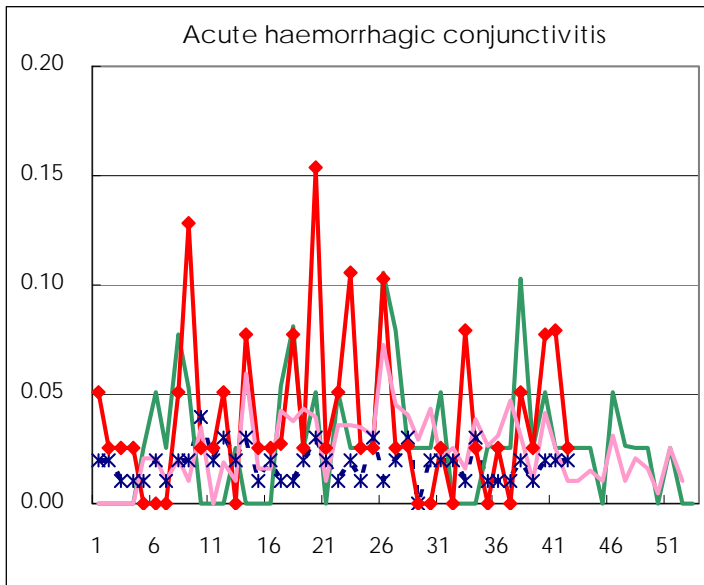
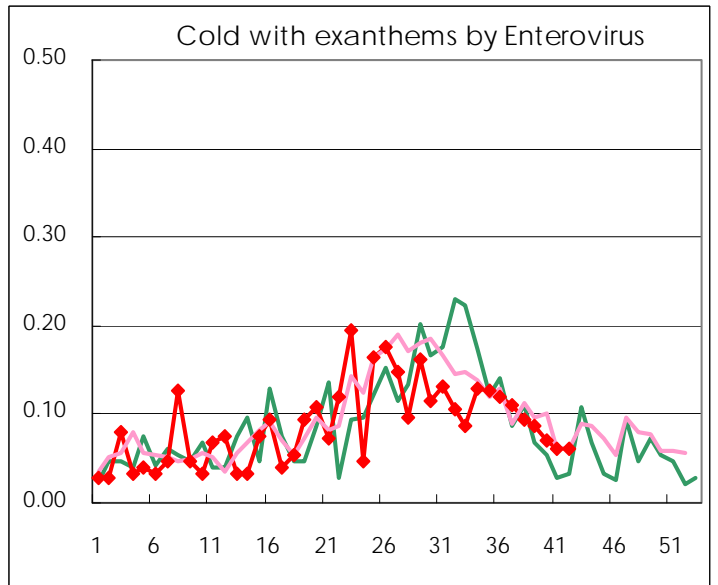
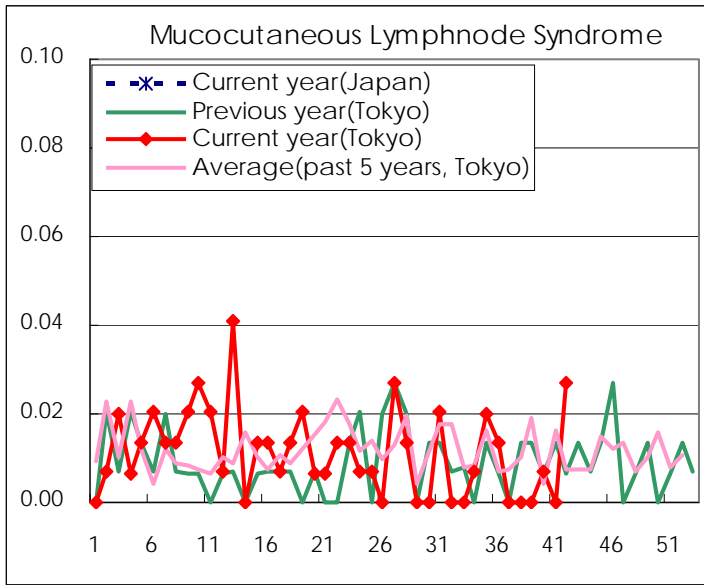
Diseases	2010				
	39th	40th	41st	42nd	/sentinel
Respiratory syncytial virus infection	25	42	30	27	0.18
Pharyngoconjunctival fever	27	22	23	38	0.26
Group A streptococcal pharyngitis	160	156	138	164	1.11
Infectious gastroenteritis	513	606	475	645	4.36
Chickenpox	104	77	104	87	0.59
Hand, foot, and mouth disease	90	72	64	64	0.43
Erythema infectiosum	36	49	57	46	0.31
Exanthem subitum	96	91	82	91	0.61
Pertussis	7	10	3	9	0.06
Herpangina	20	28	13	22	0.15
Mumps	74	86	67	70	0.47
Cold with exanthems by Enterovirus	13	10	9	9	0.06
Mucocutaneous Lymphnode Syndrome		1		4	0.03
Influenza	27	41	27	55	0.19
Acute hemorrhagic conjunctivitis	1	3	3	1	0.03
Epidemic keratoconjunctivitis	17	16	17	16	0.41
Bacterial meningitis		1	1		
Aseptic meningitis	1			2	0.09
Mycoplasma pneumonia	5	20	6	8	0.35
Chlamydial pneumonia (excluding psittacosis)				1	0.04

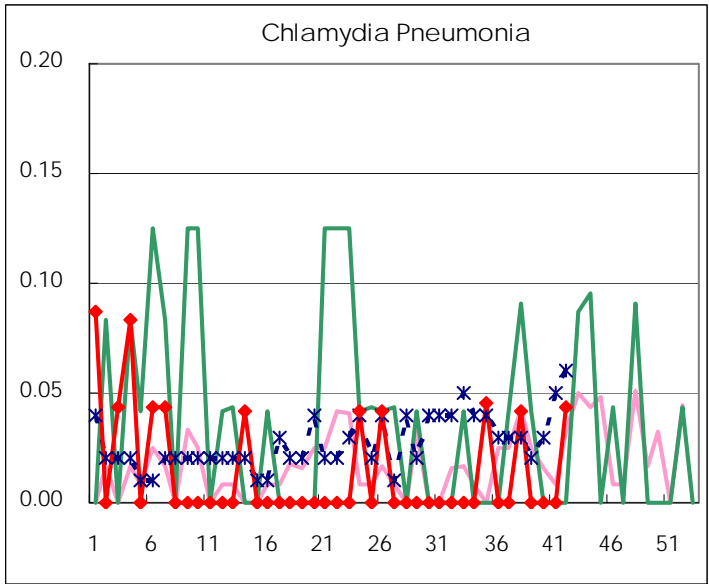
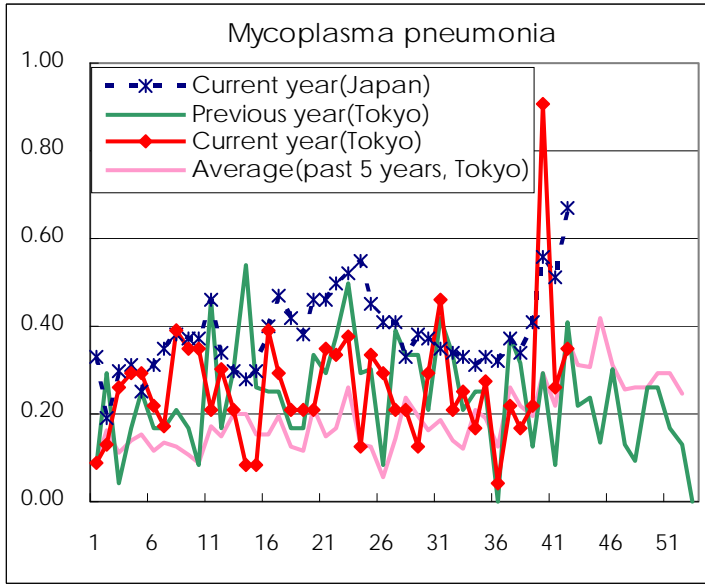
(Blank means 0.)

Disease Trend Graph (weekly reported cases per sentinel in comparison)









Number of sentinel facilities for weekly reporting		
Types of sentinels	Number of sentinels	Sentinels having reported
Pediatric	150	148
Influenza	290	284
Ophthalmic	39	39
Specially-designated	25	23

Tokyo Metropolitan Government
Infectious Disease Surveillance Center