
INFECTIOUS DISEASES WEEKLY REPORT

TOKYO IDWR

Tokyo Metropolitan Infectious Disease Surveillance Center

11 November 2010 / Number 44

Surveillance System in Tokyo, Japan

The infectious diseases which all physicians must report

All physicians must report to health centers the incidence of the diseases which are shown at page one. Health centers electronically report the individual cases to Tokyo Metropolitan Infectious Disease Surveillance Center.

The infectious diseases required to be reported by the sentinels

The numbers of patients who visit the sentinel clinics or hospitals during a week are reported to health centers in Tokyo. And they electronically report the numbers to Tokyo Metropolitan Infectious Disease Surveillance Center. We have about 400 sentinel clinics and hospitals in Tokyo.

1st Week is early January and 52nd Week is end of December.

Tokyo Metropolitan Institute of Public Health
Epidemiological Information Office

TEL:81-3-3363-3213 FAX:81-3-5332-7365

e-mail:idsc@tokyo-eiken.go.jp

URL:idsc.tokyo-eiken.go.jp/

Number of patients with the diseases which all physicians must report

Category	Diseases	Tokyo				Japan		
		41st	42nd	43rd	44th	Cum 2010	44th	Cum 2010
I	Ebola hemorrhagic fever							
	Crimean-Congo hemorrhagic fever							
	Smallpox							
	South American hemorrhagic fever							
	Plague							
	Marburg disease							
	Lassa fever							
II	Acute poliomyelitis							2
	Tuberculosis	45	82	74	39	3,424	258	21,482
	Diphtheria							
	Severe Acute Respiratory Syndrome(SARS)							
	Avian influenza H5N1							
III	Cholera					2		10
	Shigellosis	2	4	2		78	1	209
	Enterohemorrhagic Escherichia coli infection	7	5	3	1	322	29	3,856
	Typhoid fever			1	1	10	1	27
	Paratyphoid fever					5	1	20
IV	Hepatitis E			1		8		53
	West Nile fever							
	Hepatitis A					41	3	321
	Echinococcosis		1			1		9
	Yellow fever							
	Psittacosis							9
	Omsk hemorrhagic fever							
	Relapsing fever						1	1
	Kyasanur forest disease							
	Q fever							2
	Rabies							
	Coccidioidomycosis							
	Monkeypox							
	Hemorrhagic fever with renal syndrome							
	Western equine encephalitis							
	Tick-borne encephalitis							
	Anthrax							
	Scrub typhus(Tsutsugamushi disease)					5	3	136
	Dengue fever	2	1	4	1	63	2	217
	Eastern equine encephalitis							
	Avian influenza (excluding H5N1)							
	Nipah virus infection							
	Japanese spotted fever					1	1	101
	Japanese encephalitis							3
	Epidemic typhus							
	Hantavirus pulmonary syndrome							
	Herpes B virus infection							
	Glanders							
	Brucellosis							2
	Venezuelan equine encephalitis							
	Hendra virus infection							
	Botulism							
Malaria		1	1	1	26	2	63	
Tularemia								
Lyme disease					1		11	
Lyssavirus infection(excluding rabies)								
Rift valley fever								
Melioidosis					1		3	
Legionellosis	3	3	6	1	46	11	625	
Leptospirosis					2		20	
Rocky mountain spotted fever								

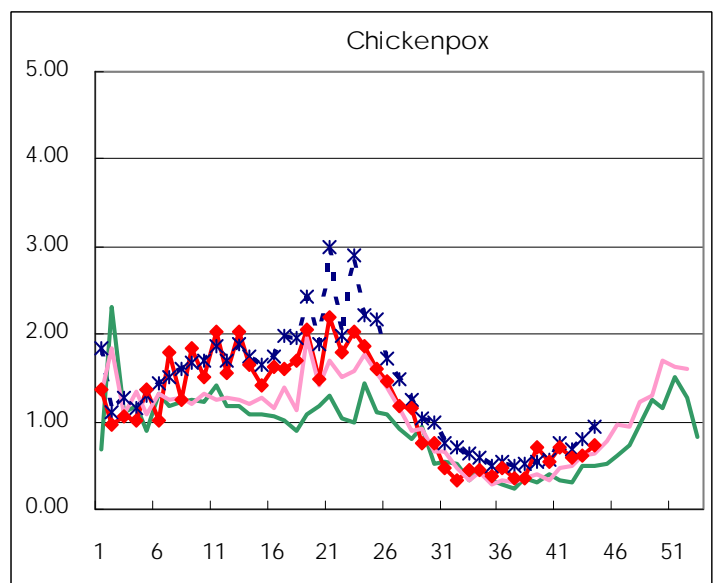
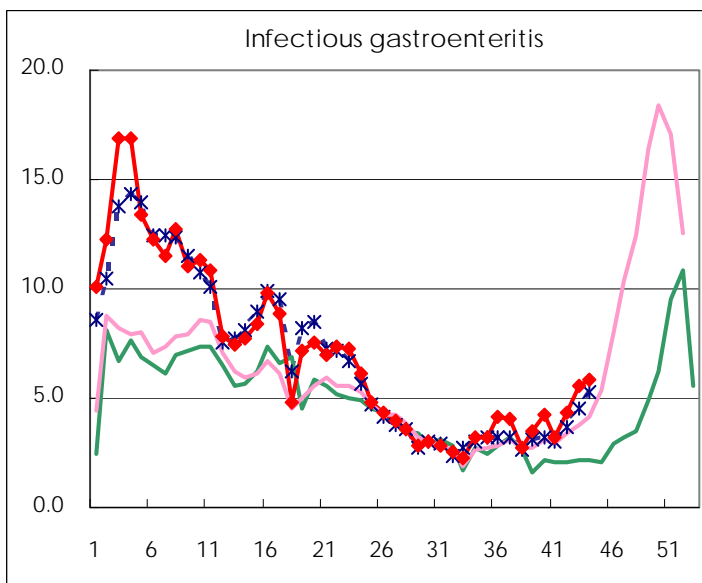
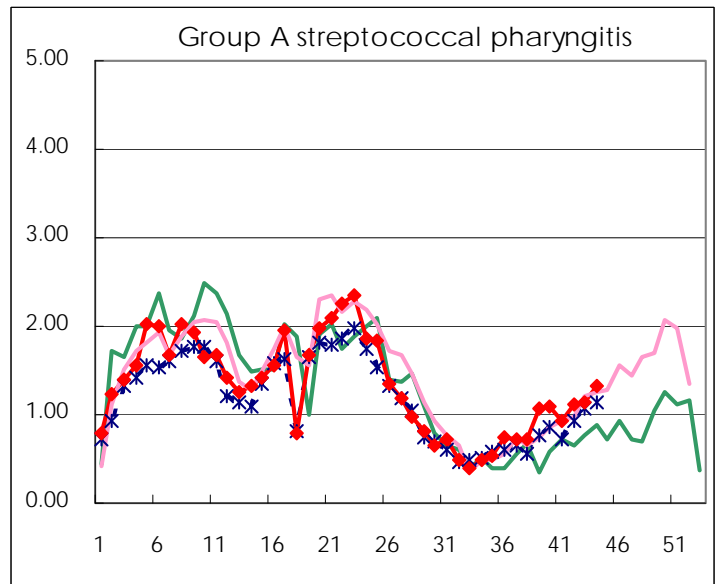
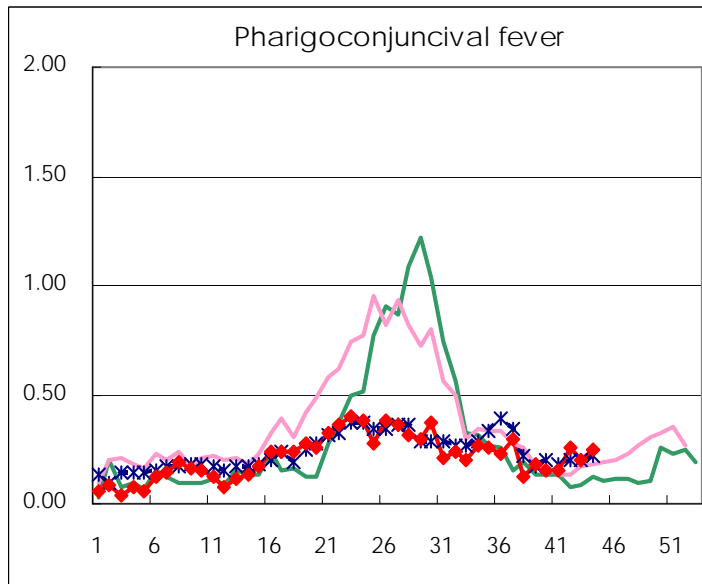
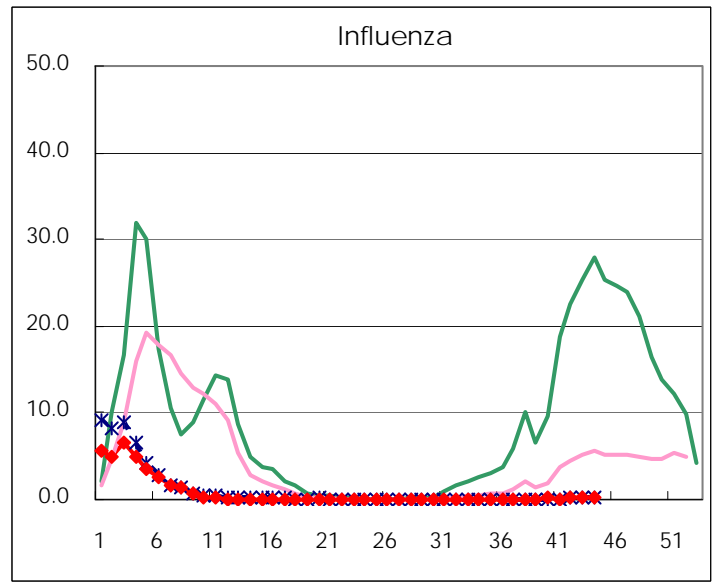
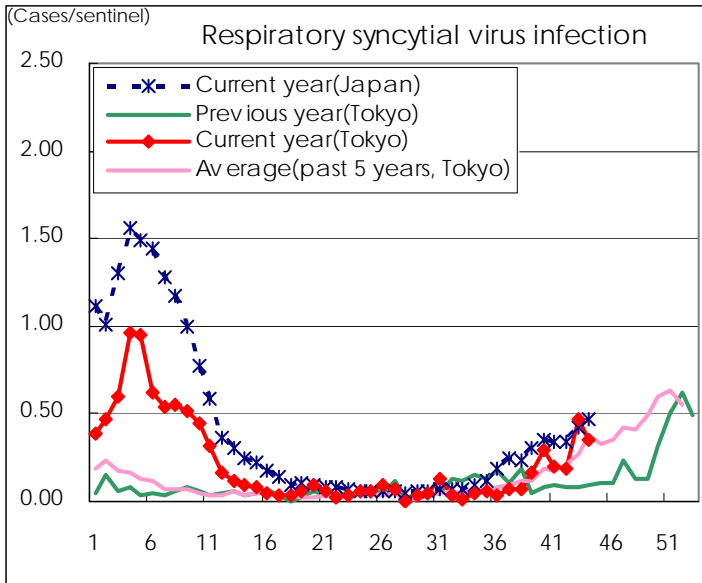
Category	Diseases	Tokyo					Japan	
		41st	42nd	43rd	44th	Cum 2010	44th	Cum 2010
V	Amebiasis	1	9	4	1	151	11	713
	Viral hepatitis(excluding hepatitis A and E)		9			41	1	173
	Acute encephalitis(excluding JE and WNE)					14	1	196
	Cryptosporidiosis					3	1	17
	Creutzfeldt-Jakob disease			1		12	1	139
	Severe invasive streptococcal infections(TSLS)	2		1		18		99
	Acquired immunodeficiency syndrome (AIDS)	18	11	8	12	430	15	1,266
	Giardiasis		1	1		13		69
	Meningococcal meningitis							7
	Congenital rubella syndrome							
	Syphilis	5	7	1	3	148	6	521
	Tetanus	2				5	1	88
	Vancomycin-resistant S. aureus infection							
	Vancomycin-resistant Enterococcus infection					12		96
	Rubella					11		76
Measles		1	1		68	1	412	
Novel Flu	Novel influenza (pandemic A/H1N1 2009)						—	

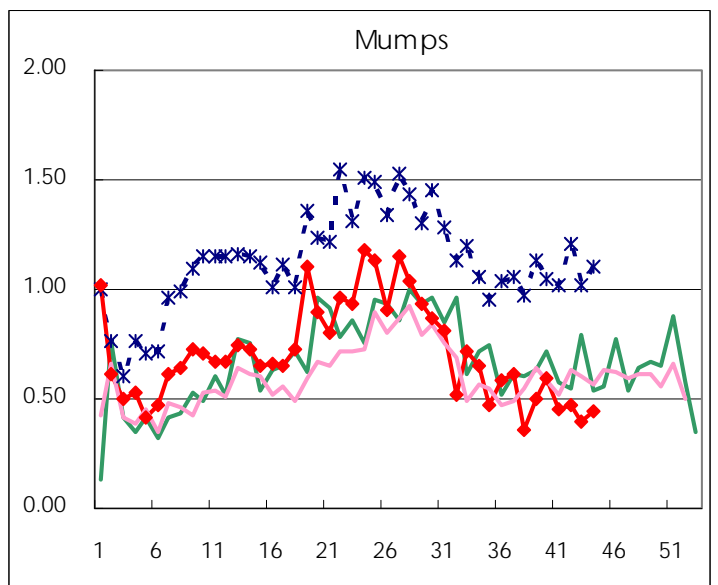
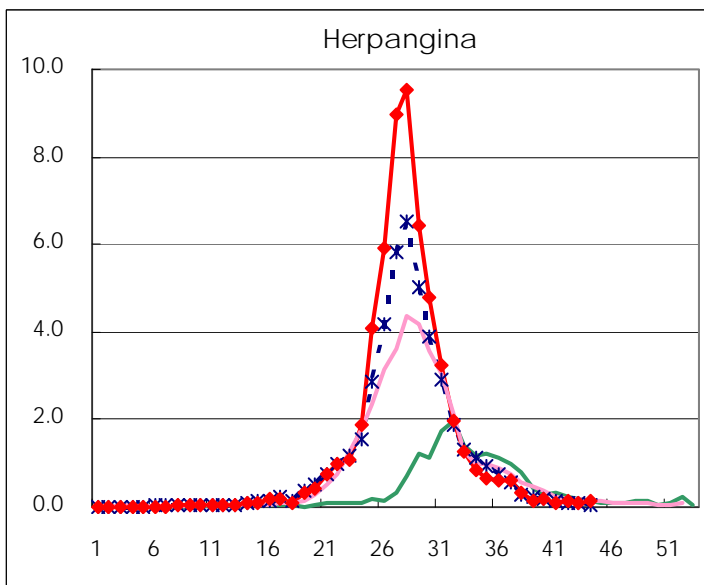
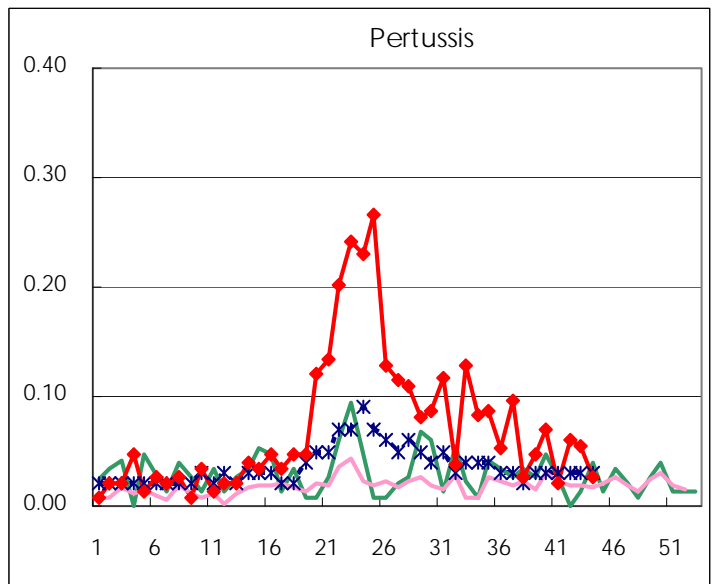
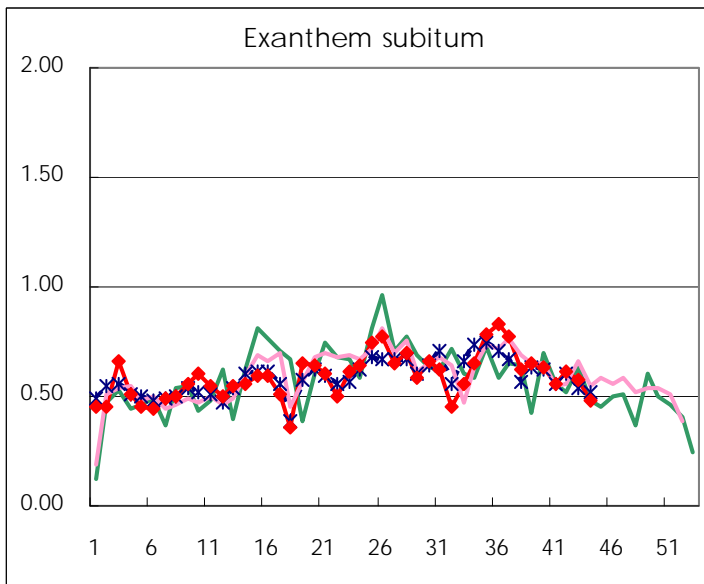
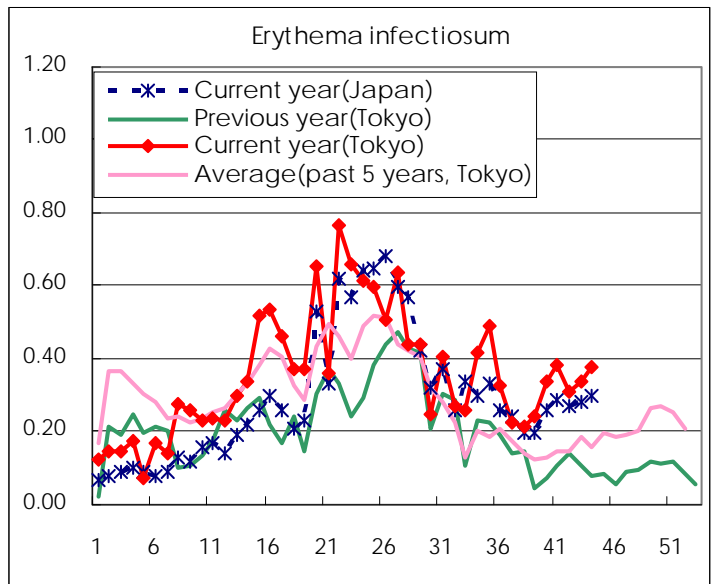
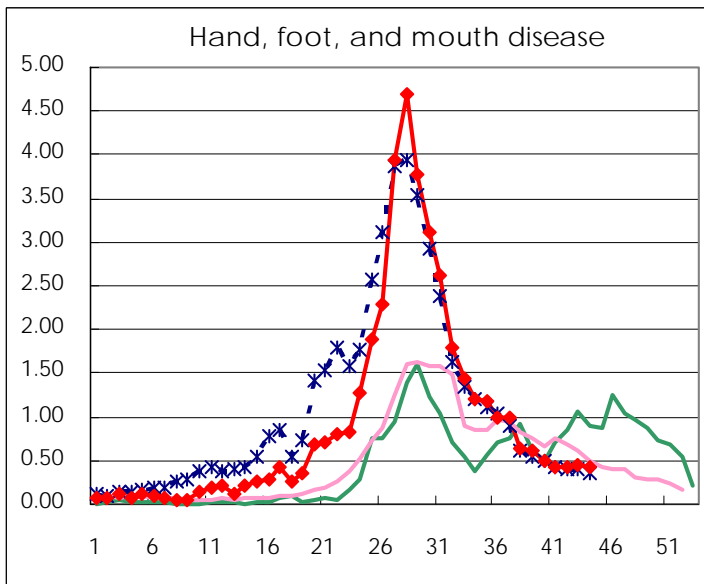
Number of patients with the diseases to be reported
by the designated clinics and hospitals

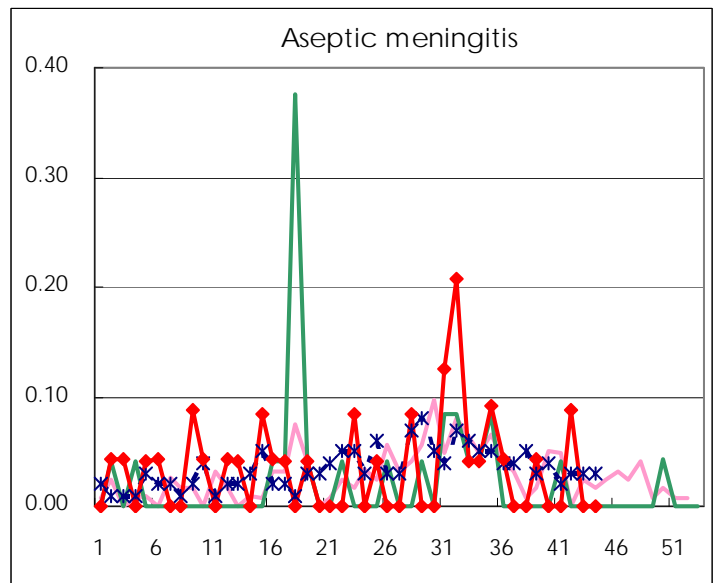
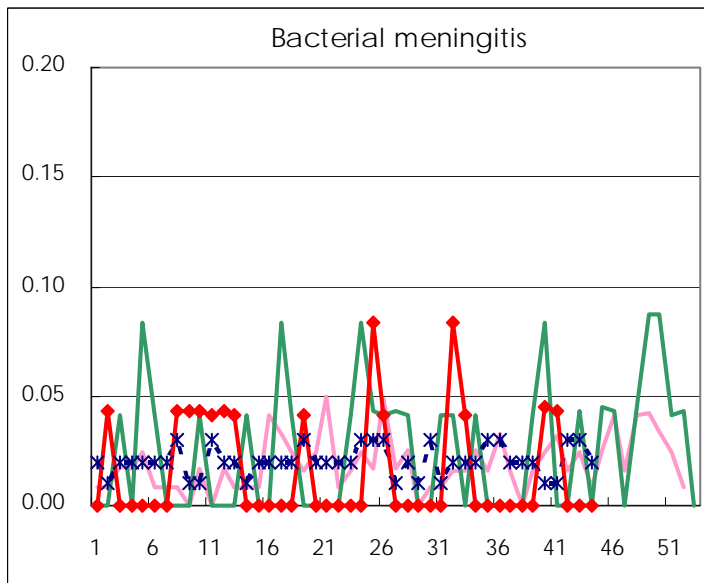
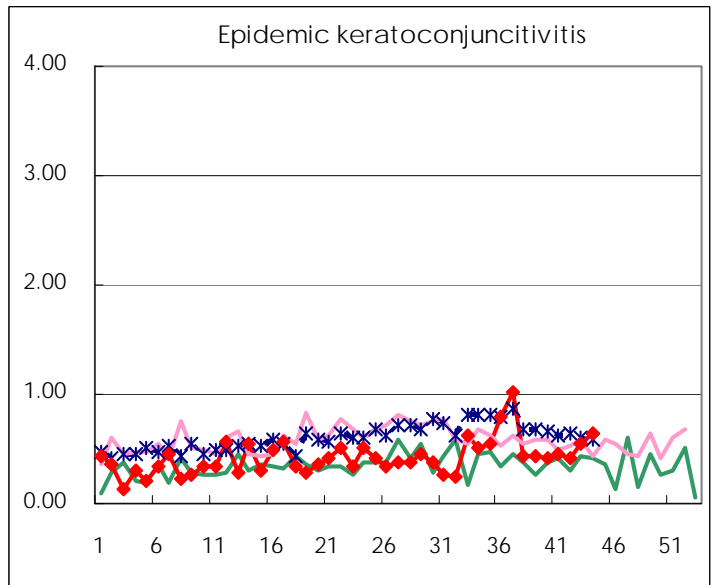
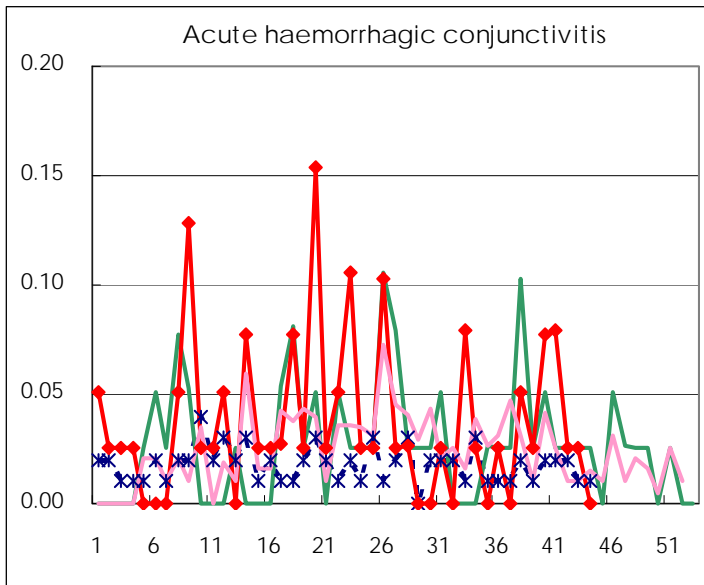
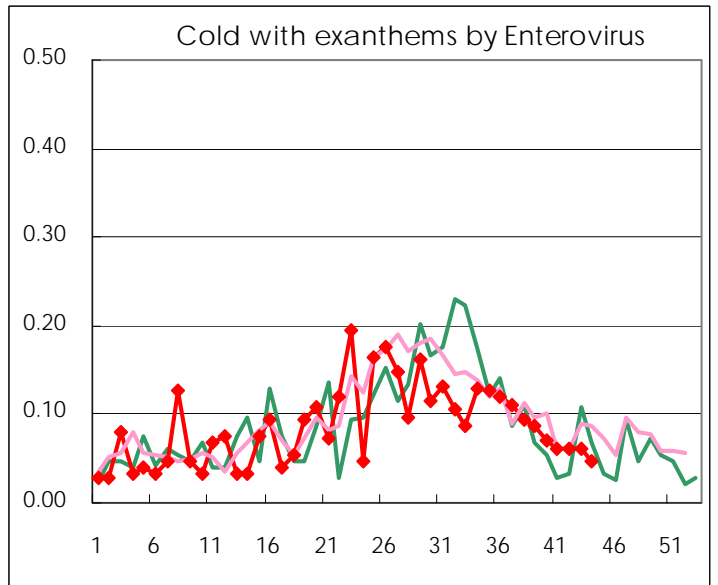
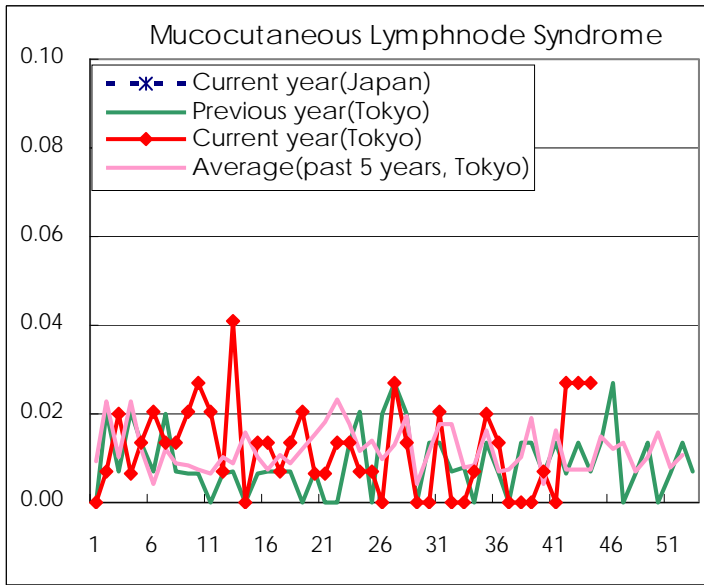
Diseases	2010				
	41st	42nd	43rd	44th	/sentinel
Respiratory syncytial virus infection	30	27	70	53	0.36
Pharyngoconjunctival fever	23	38	29	37	0.25
Group A streptococcal pharyngitis	138	164	168	198	1.33
Infectious gastroenteritis	475	645	817	878	5.89
Chickenpox	104	87	91	109	0.73
Hand, foot, and mouth disease	64	64	68	65	0.44
Erythema infectiosum	57	46	50	56	0.38
Exanthem subitum	82	91	85	71	0.48
Pertussis	3	9	8	4	0.03
Herpangina	13	22	15	20	0.13
Mumps	67	70	59	66	0.44
Cold with exanthems by Enterovirus	9	9	9	7	0.05
Mucocutaneous Lymphnode Syndrome		4	4	4	0.03
Influenza	27	55	35	46	0.16
Acute hemorrhagic conjunctivitis	3	1	1		
Epidemic keratoconjunctivitis	17	16	21	24	0.65
Bacterial meningitis	1				
Aseptic meningitis		2			
Mycoplasma pneumonia	6	8	13	13	0.59
Chlamydial pneumonia (excluding psittacosis)		1			

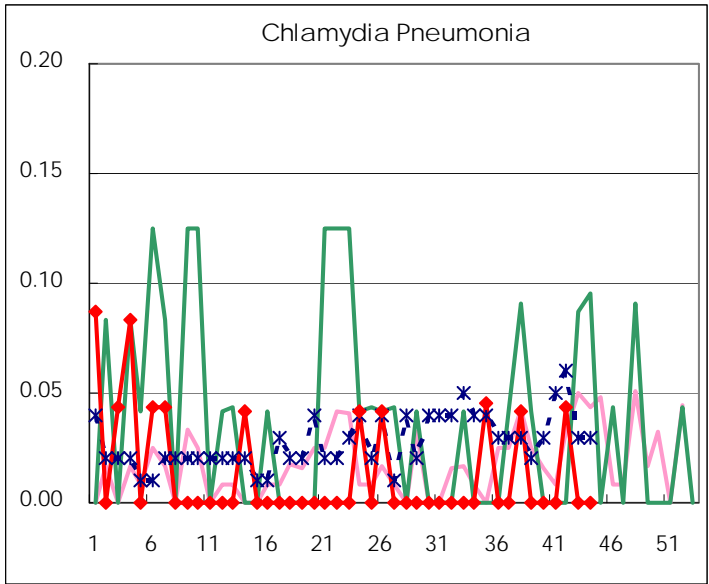
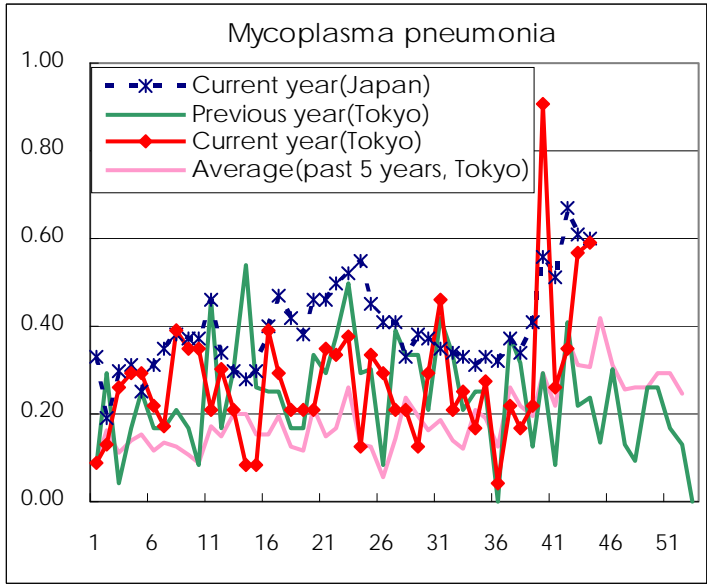
(Blank means 0.)

Disease Trend Graph (weekly reported cases per sentinel in comparison)









Number of sentinel facilities for weekly reporting		
Types of sentinels	Number of sentinels	Sentinels having reported
Pediatric	150	149
Influenza	290	288
Ophthalmic	39	37
Specially-designated	25	22

Tokyo Metropolitan Government
Infectious Disease Surveillance Center