
INFECTIOUS DISEASES WEEKLY REPORT

TOKYO iDWR

Tokyo Metropolitan Infectious Disease Surveillance Center

18 November 2010 / Number 45

Surveillance System in Tokyo, Japan

The infectious diseases which all physicians must report

All physicians must report to health centers the incidence of the diseases which are shown at page one. Health centers electronically report the individual cases to Tokyo Metropolitan Infectious Disease Surveillance Center.

The infectious diseases required to be reported by the sentinels

The numbers of patients who visit the sentinel clinics or hospitals during a week are reported to health centers in Tokyo. And they electronically report the numbers to Tokyo Metropolitan Infectious Disease Surveillance Center. We have about 400 sentinel clinics and hospitals in Tokyo.

1st Week is early January and 52nd Week is end of December.

Tokyo Metropolitan Institute of Public Health
Epidemiological Information Office

TEL:81-3-3363-3213 FAX:81-3-5332-7365

e-mail:idsc@tokyo-eiken.go.jp

URL:idsc.tokyo-eiken.go.jp/

Number of patients with the diseases which all physicians must report

Category	Diseases	Tokyo				Japan		
		42nd	43rd	44th	45th	Cum 2010	45th	Cum 2010
I	Ebola hemorrhagic fever							
	Crimean-Congo hemorrhagic fever							
	Smallpox							
	South American hemorrhagic fever							
	Plague							
	Marburg disease							
	Lassa fever							
II	Acute poliomyelitis							2
	Tuberculosis	85	74	49	62	3,501	298	22,043
	Diphtheria							
	Severe Acute Respiratory Syndrome(SARS)							
	Avian influenza H5N1							
III	Cholera					2	1	11
	Shigellosis	4	2			78	2	212
	Enterohemorrhagic Escherichia coli infection	5	3	1	2	324	48	3,910
	Typhoid fever		1	1	1	11	1	28
	Paratyphoid fever					5		20
IV	Hepatitis E		1			8		53
	West Nile fever							
	Hepatitis A				3	44	3	325
	Echinococcosis	1				1	1	10
	Yellow fever							
	Psittacosis							9
	Omsk hemorrhagic fever							
	Relapsing fever							1
	Kyasanur forest disease							
	Q fever							2
	Rabies							
	Coccidioidomycosis							
	Monkeypox							
	Hemorrhagic fever with renal syndrome							
	Western equine encephalitis							
	Tick-borne encephalitis							
	Anthrax							
	Scrub typhus(Tsutsugamushi disease)					5	16	157
	Dengue fever	1	4	1	2	65	1	221
	Eastern equine encephalitis							
	Avian influenza (excluding H5N1)							
	Nipah virus infection							
	Japanese spotted fever					1	1	104
	Japanese encephalitis							3
	Epidemic typhus							
	Hantavirus pulmonary syndrome							
	Herpes B virus infection							
	Glanders							
	Brucellosis							2
	Venezuelan equine encephalitis							
	Hendra virus infection							
	Botulism							
Malaria	1	1	1		26		63	
Tularemia								
Lyme disease					1	1	12	
Lyssavirus infection(excluding rabies)								
Rift valley fever								
Melioidosis					1		3	
Legionellosis	3	6	1	2	48	14	647	
Leptospirosis					2		21	
Rocky mountain spotted fever								

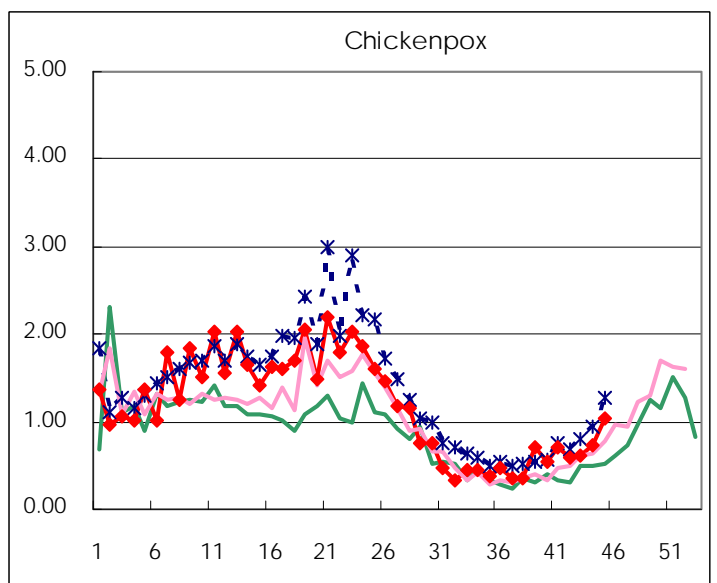
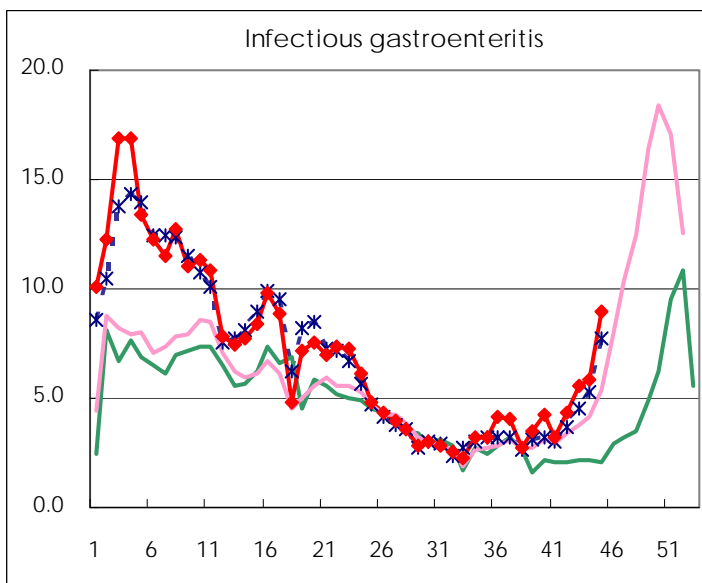
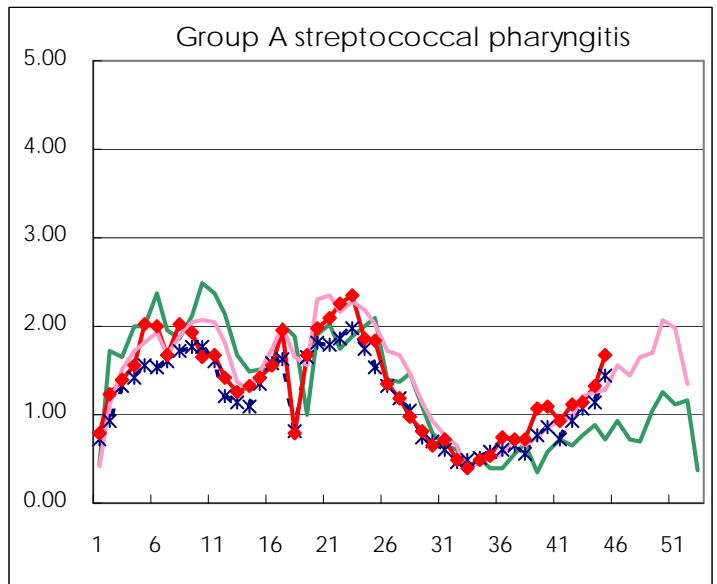
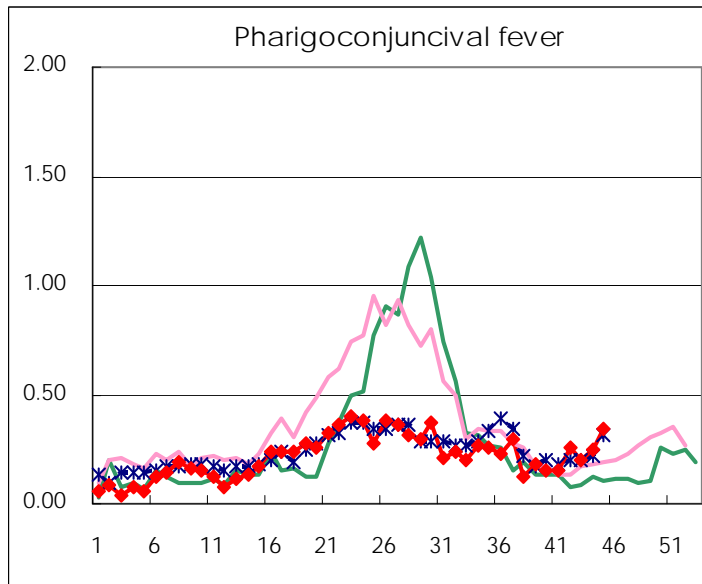
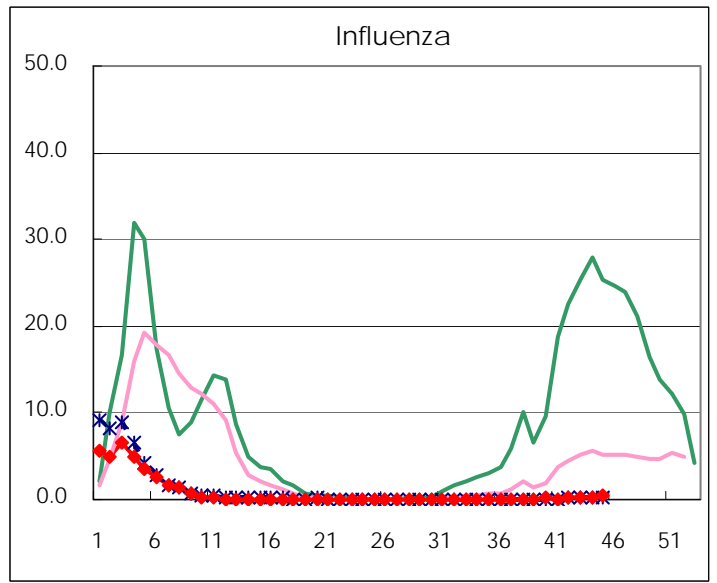
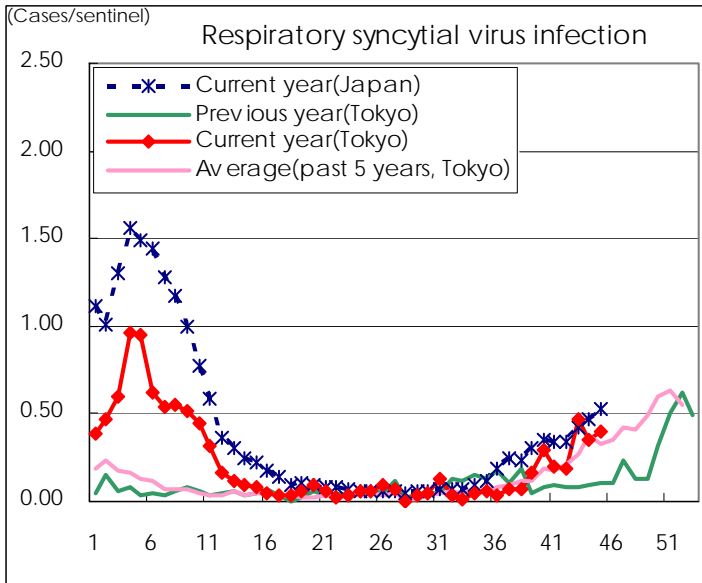
Category	Diseases	Tokyo					Japan	
		42nd	43rd	44th	45th	Cum 2010	45th	Cum 2010
V	Amebiasis	9	4	1	3	154	11	729
	Viral hepatitis(excluding hepatitis A and E)	9			1	42	4	180
	Acute encephalitis(excluding JE and WNE)					14	3	201
	Cryptosporidiosis					3		17
	Creutzfeldt-Jakob disease		1			12	1	141
	Severe invasive streptococcal infections(TSLS)		1			18	2	104
	Acquired immunodeficiency syndrome (AIDS)	11	8	12	11	441	19	1,300
	Giardiasis	1	1			13	1	70
	Meningococcal meningitis							7
	Congenital rubella syndrome							
	Syphilis	7	1	3	4	152	5	539
	Tetanus					5		92
	Vancomycin-resistant S. aureus infection							
	Vancomycin-resistant Enterococcus infection					12		96
	Rubella					11		77
Measles	1			1	67	3	412	
Novel Flu	Novel influenza (pandemic A/H1N1 2009)						—	

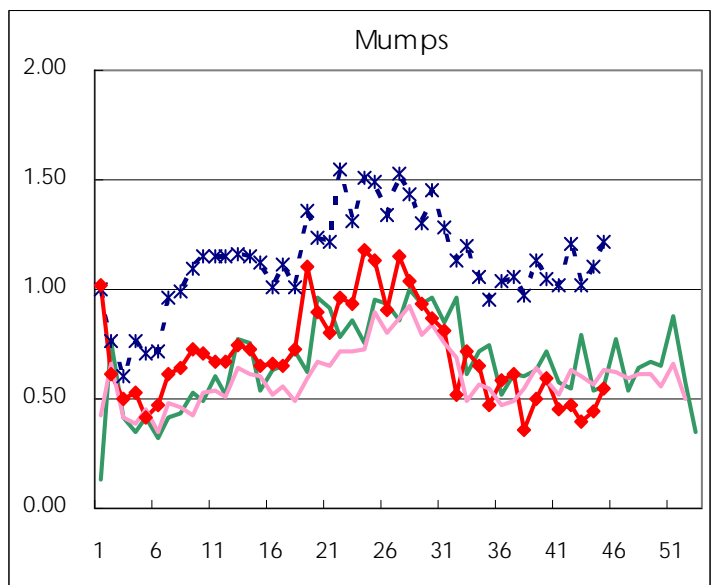
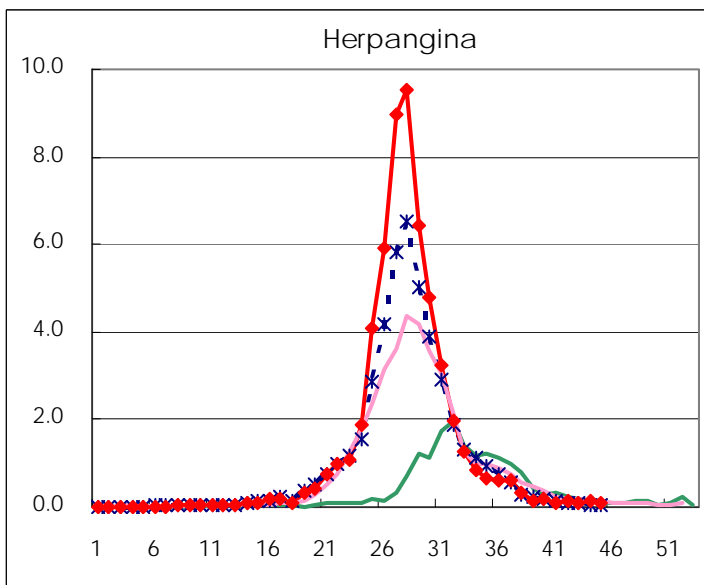
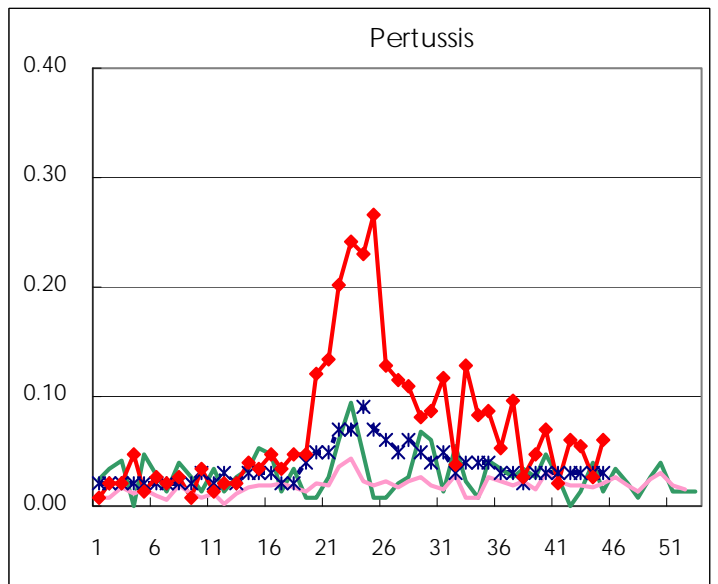
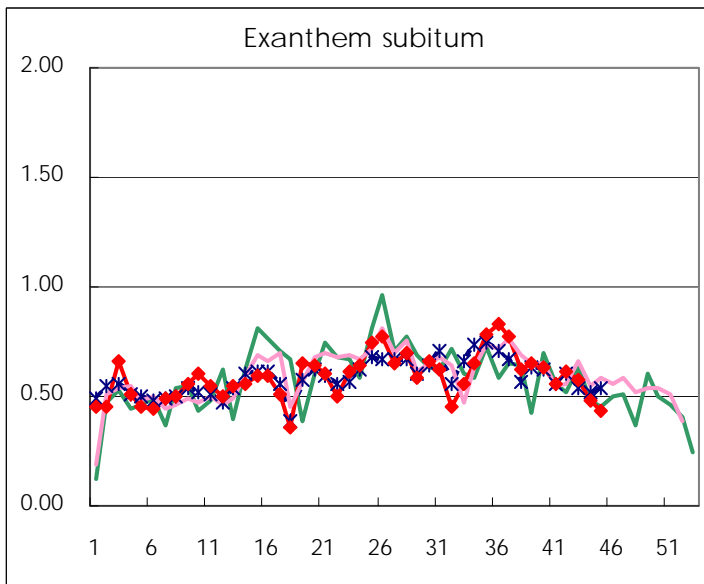
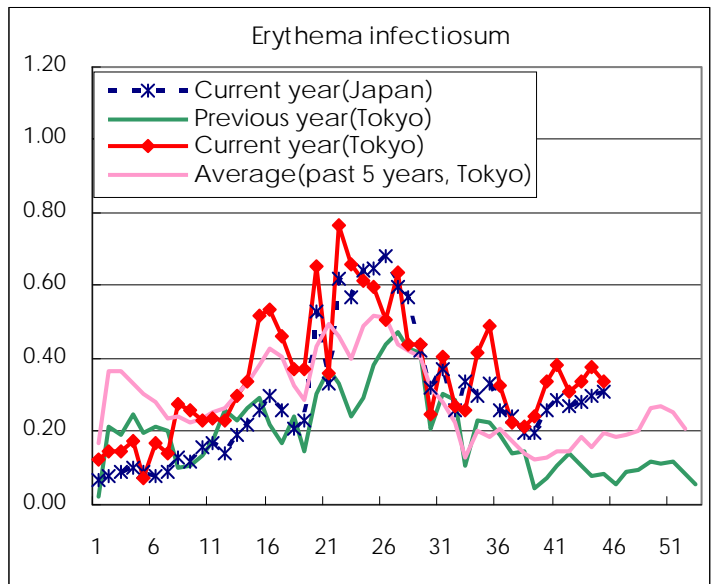
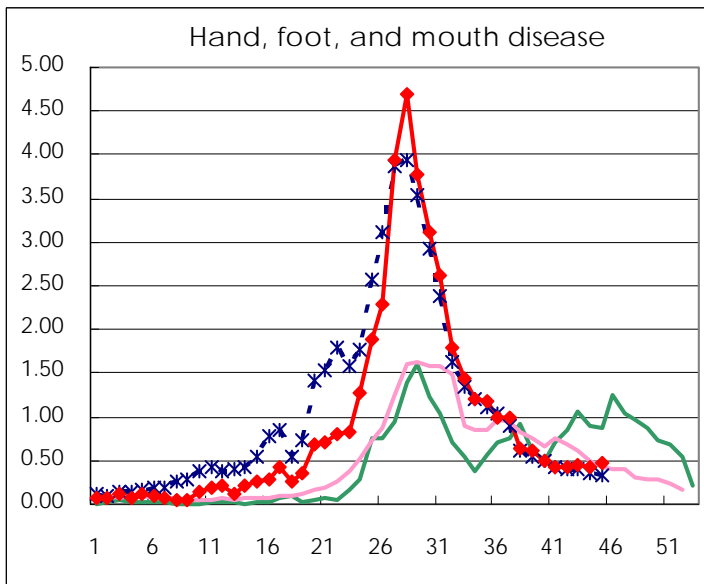
Number of patients with the diseases to be reported
by the designated clinics and hospitals

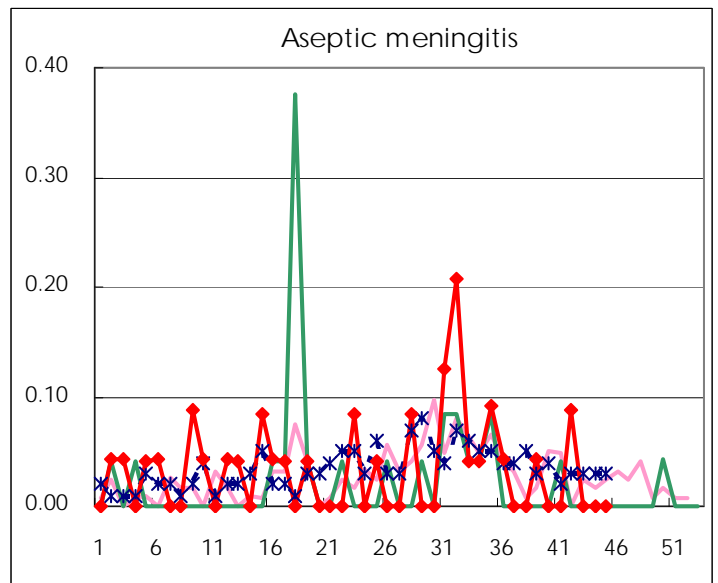
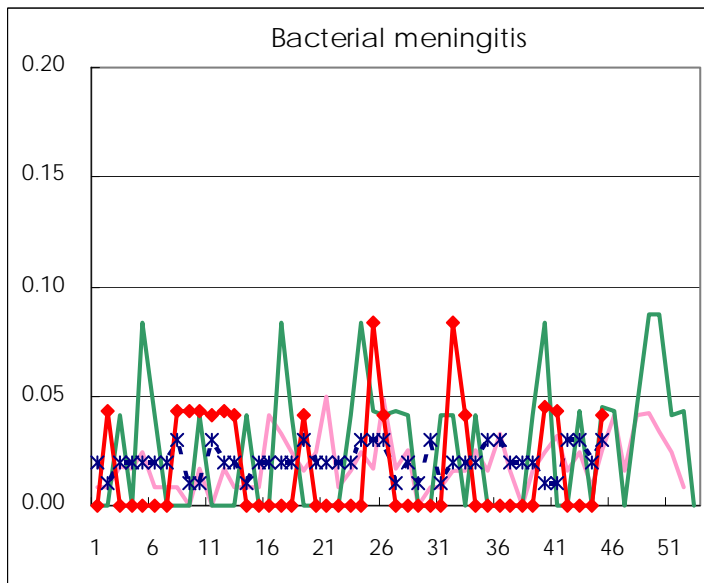
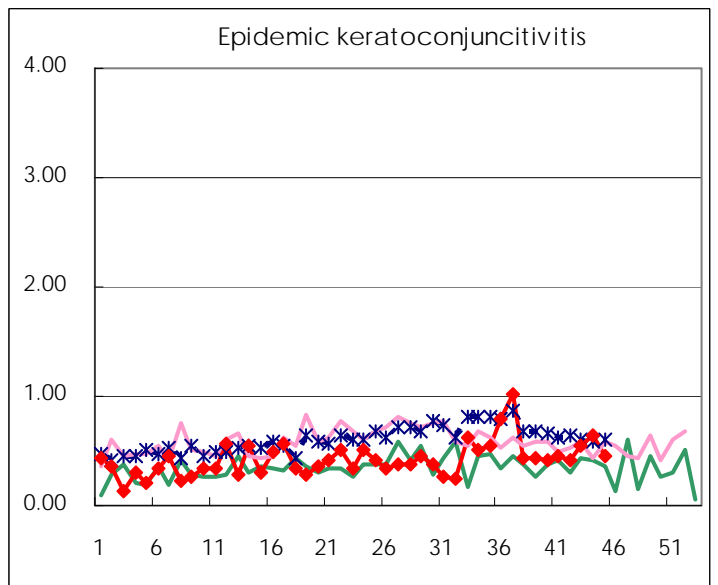
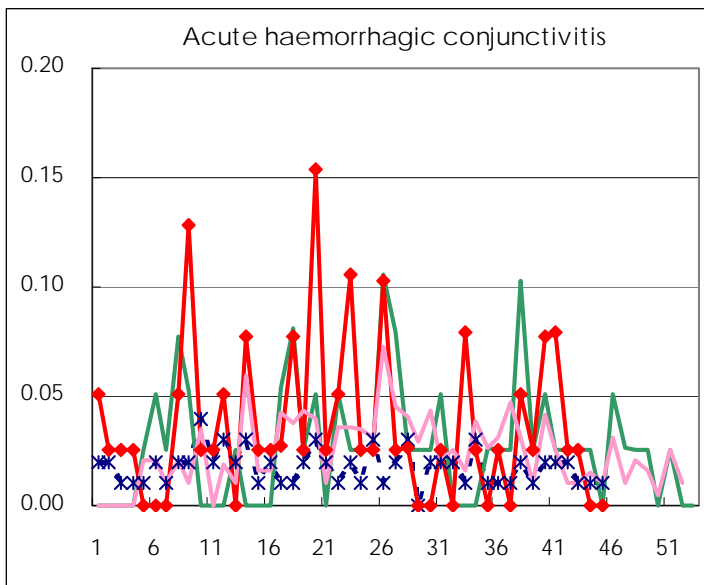
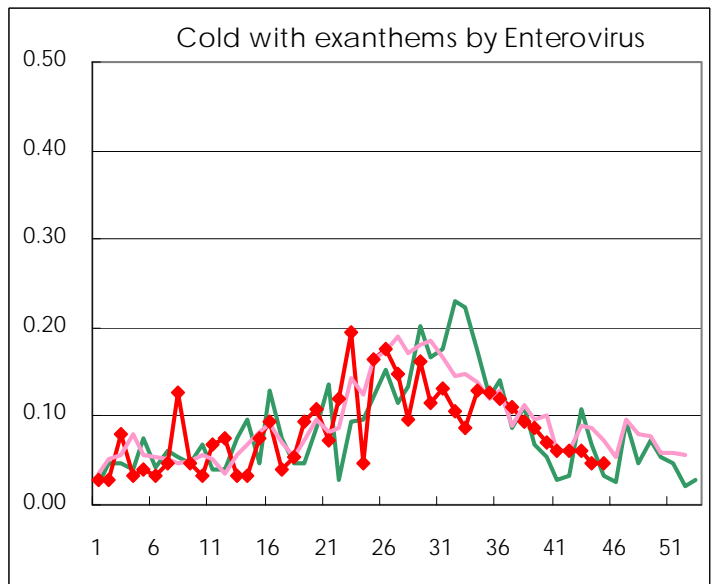
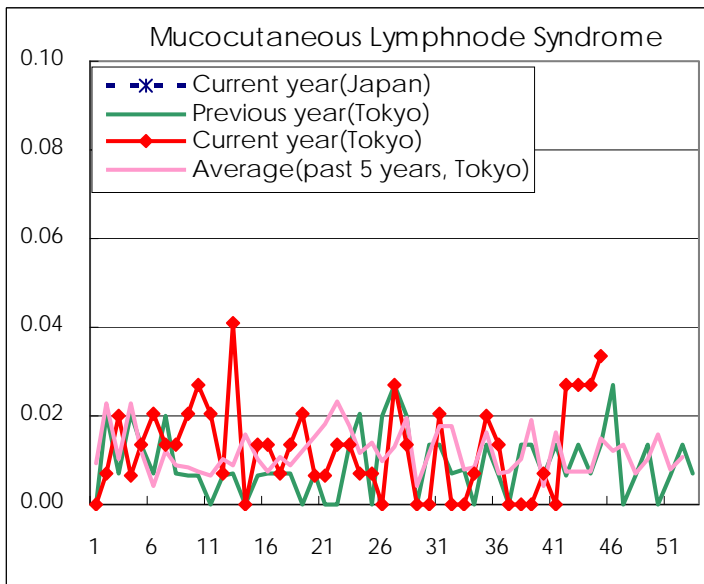
Diseases	2010				
	42nd	43rd	44th	45th	/sentinel
Respiratory syncytial virus infection	27	70	53	60	0.40
Pharyngoconjunctival fever	38	29	37	51	0.34
Group A streptococcal pharyngitis	164	168	198	250	1.68
Infectious gastroenteritis	645	817	878	1,339	8.99
Chickenpox	87	91	109	156	1.05
Hand, foot, and mouth disease	64	68	65	72	0.48
Erythema infectiosum	46	50	56	50	0.34
Exanthem subitum	91	85	71	64	0.43
Pertussis	9	8	4	9	0.06
Herpangina	22	15	20	17	0.11
Mumps	70	59	66	82	0.55
Cold with exanthems by Enterovirus	9	9	7	7	0.05
Mucocutaneous Lymphnode Syndrome	4	4	4	5	0.03
Influenza	55	35	46	107	0.37
Acute hemorrhagic conjunctivitis	1	1			
Epidemic keratoconjunctivitis	16	21	24	18	0.46
Bacterial meningitis				1	0.04
Aseptic meningitis	2				
Mycoplasma pneumonia	8	13	13	21	0.88
Chlamydial pneumonia (excluding psittacosis)	1				

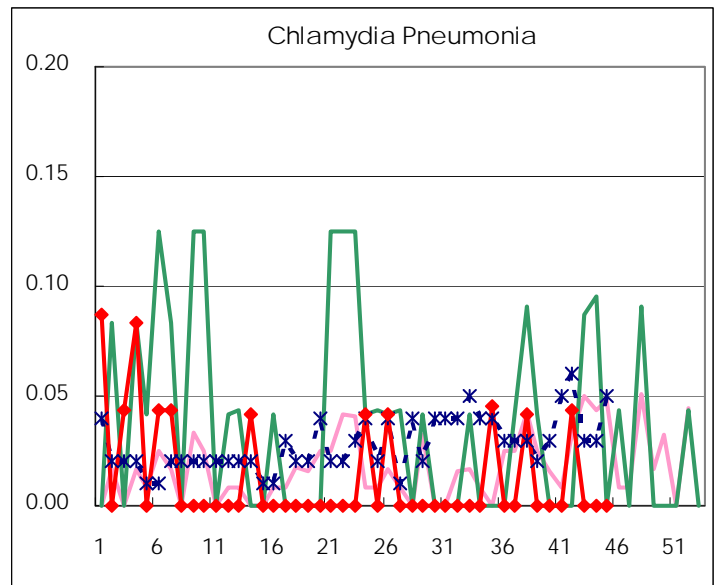
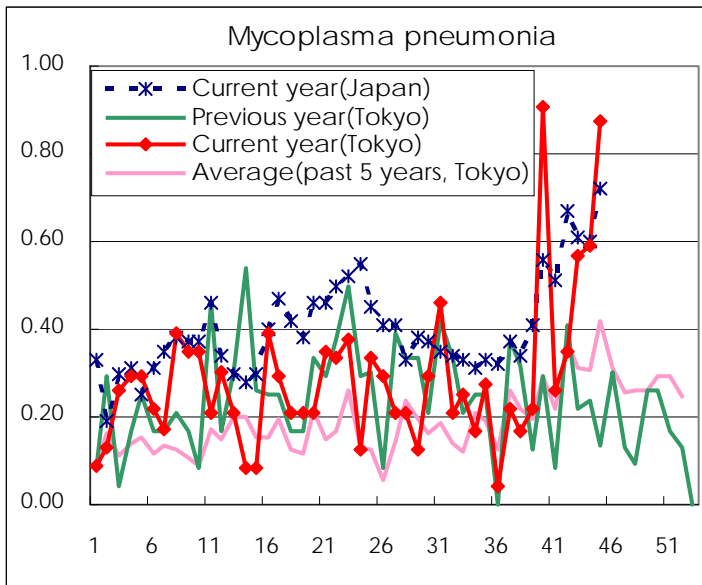
(Blank means 0.)

Disease Trend Graph (weekly reported cases per sentinel in comparison)









Number of sentinel facilities for weekly reporting		
Types of sentinels	Number of sentinels	Sentinels having reported
Pediatric	150	149
Influenza	290	287
Ophthalmic	39	39
Specially-designated	25	24

Tokyo Metropolitan Government
Infectious Disease Surveillance Center