
INFECTIOUS DISEASES WEEKLY REPORT

TOKYO IDWR

Tokyo Metropolitan Infectious Disease Surveillance Center

25 November 2010 / Number 46

Surveillance System in Tokyo, Japan

The infectious diseases which all physicians must report

All physicians must report to health centers the incidence of the diseases which are shown at page one. Health centers electronically report the individual cases to Tokyo Metropolitan Infectious Disease Surveillance Center.

The infectious diseases required to be reported by the sentinels

The numbers of patients who visit the sentinel clinics or hospitals during a week are reported to health centers in Tokyo. And they electronically report the numbers to Tokyo Metropolitan Infectious Disease Surveillance Center. We have about 400 sentinel clinics and hospitals in Tokyo.

1st Week is early January and 52nd Week is end of December.

Tokyo Metropolitan Institute of Public Health
Epidemiological Information Office

TEL:81-3-3363-3213 FAX:81-3-5332-7365

e-mail:idsc@tokyo-eiken.go.jp

URL:idsc.tokyo-eiken.go.jp/

Number of patients with the diseases which all physicians must report

Category	Diseases	Tokyo				Cum 2010	Japan	
		43rd	44th	45th	46th		46th	Cum 2010
I	Ebola hemorrhagic fever							
	Crimean-Congo hemorrhagic fever							
	Smallpox							
	South American hemorrhagic fever							
	Plague							
	Marburg disease							
	Lassa fever							
II	Acute poliomyelitis							2
	Tuberculosis	78	54	72	60	3,584	360	22,703
	Diphtheria							
	Severe Acute Respiratory Syndrome(SARS)							
	Avian influenza H5N1							
III	Cholera					2		11
	Shigellosis	2			2	80	3	215
	Enterohemorrhagic Escherichia coli infection	3	1	2	3	327	36	3,953
	Typhoid fever	1	1	1	1	12	1	29
	Paratyphoid fever					5		20
IV	Hepatitis E	1				8		53
	West Nile fever							
	Hepatitis A			3		44	2	327
	Echinococcosis					1		11
	Yellow fever							
	Psittacosis							9
	Omsk hemorrhagic fever							
	Relapsing fever							1
	Kyasanur forest disease							
	Q fever							2
	Rabies							
	Coccidioidomycosis				1	1		1
	Monkeypox							
	Hemorrhagic fever with renal syndrome							
	Western equine encephalitis							
	Tick-borne encephalitis							
	Anthrax							
	Scrub typhus(Tsutsugamushi disease)					5	19	179
	Dengue fever	4	1	2		65	3	224
	Eastern equine encephalitis							
	Avian influenza (excluding H5N1)							
	Nipah virus infection							
	Japanese spotted fever					1	1	109
	Japanese encephalitis							3
	Epidemic typhus							
	Hantavirus pulmonary syndrome							
	Herpes B virus infection							
	Glanders							
	Brucellosis							2
	Venezuelan equine encephalitis							
	Hendra virus infection							
Botulism								
Malaria	1	1		2	28	3	66	
Tularemia								
Lyme disease					1		12	
Lyssavirus infection(excluding rabies)								
Rift valley fever								
Melioidosis					1		3	
Legionellosis	6	1	2	3	51	10	663	
Leptospirosis					2		21	
Rocky mountain spotted fever								

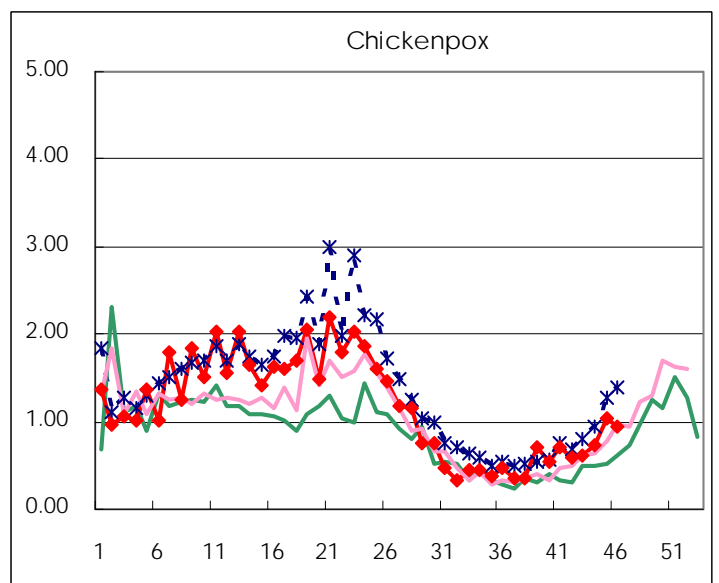
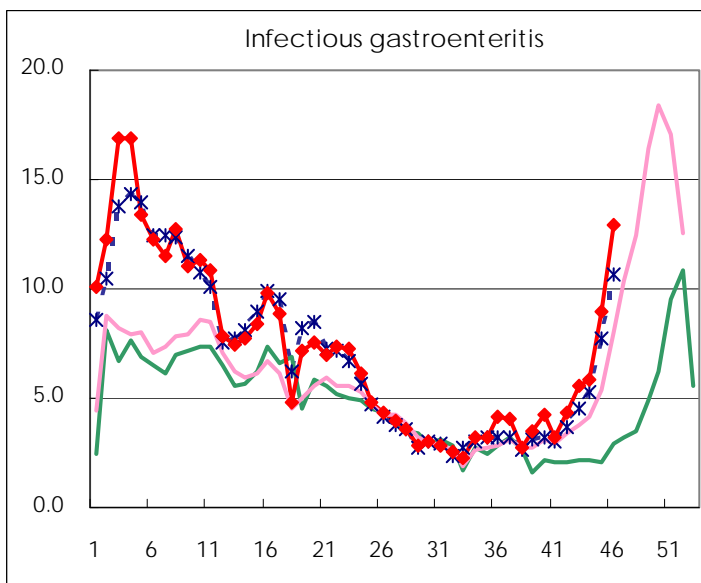
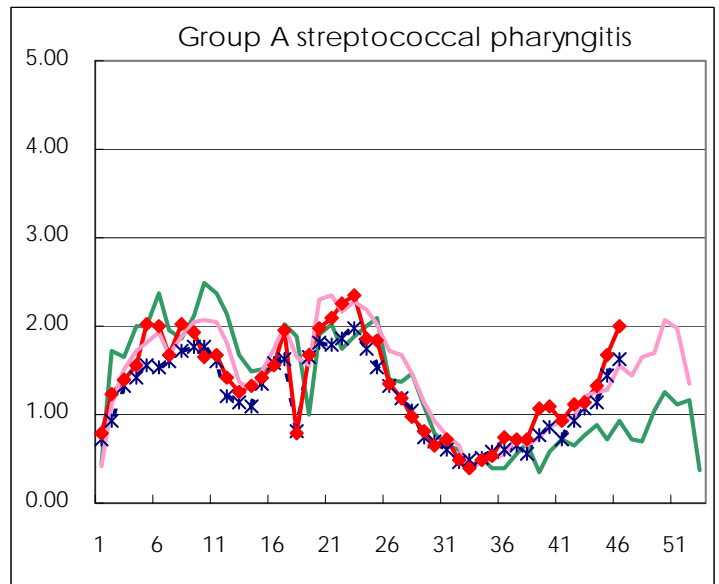
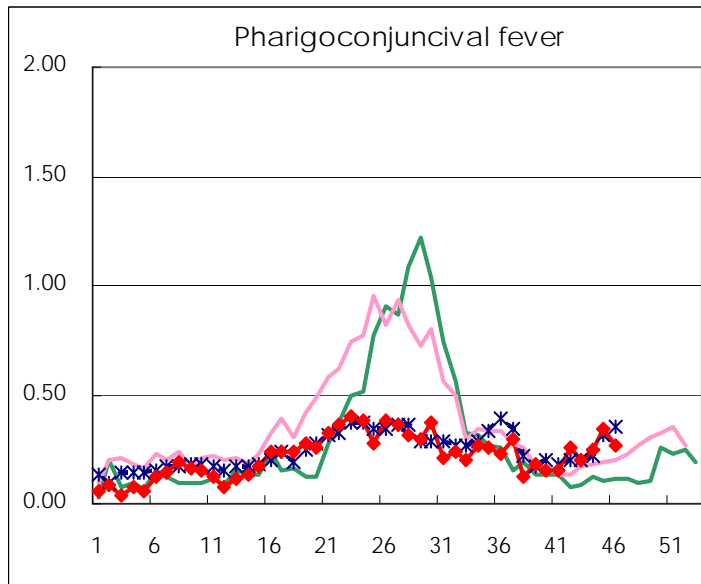
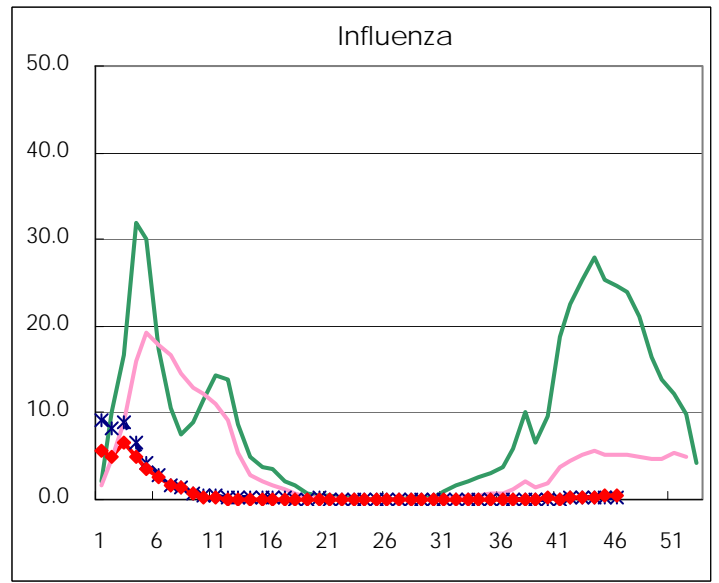
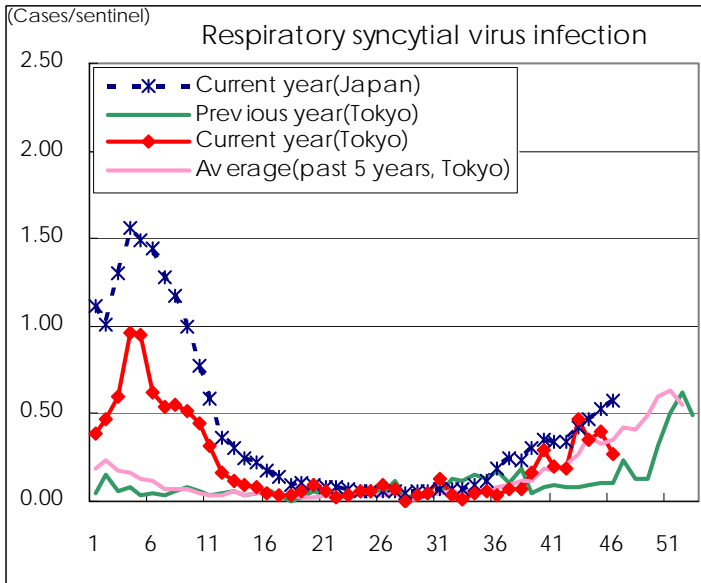
Category	Diseases	Tokyo				Japan		
		43rd	44th	45th	46th	Cum 2010	46th	Cum 2010
V	Amebiasis	4	1	3	3	157	9	740
	Viral hepatitis(excluding hepatitis A and E)			1		42	2	187
	Acute encephalitis(excluding JE and WNE)					14	2	207
	Cryptosporidiosis					3		17
	Creutzfeldt-Jakob disease	1				12	2	143
	Severe invasive streptococcal infections(TSLS)	1				18	2	106
	Acquired immunodeficiency syndrome (AIDS)	8	12	11	7	448	11	1,325
	Giardiasis	1				13	3	74
	Meningococcal meningitis							7
	Congenital rubella syndrome							
	Syphilis	1	3	4	1	153	4	545
	Tetanus					5	2	94
	Vancomycin-resistant S. aureus infection							
	Vancomycin-resistant Enterococcus infection					12	3	101
	Rubella					11	1	78
Measles			1	1	68	2	417	
Novel Flu	Novel influenza (pandemic A/H1N1 2009)						—	

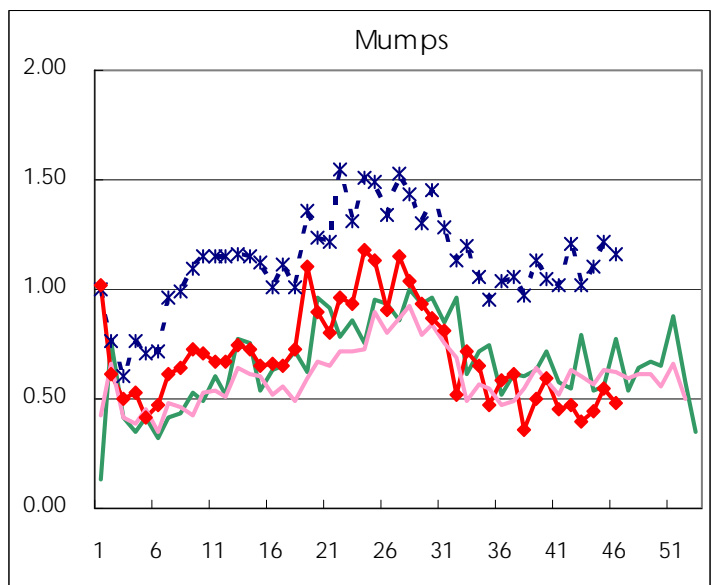
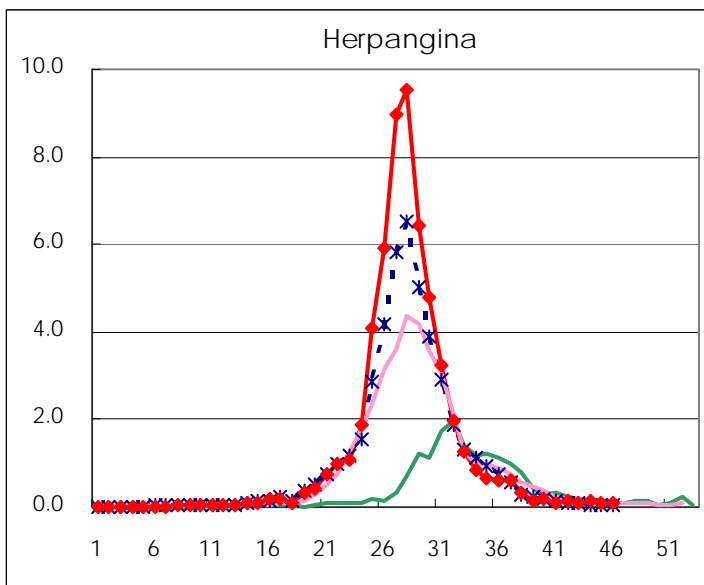
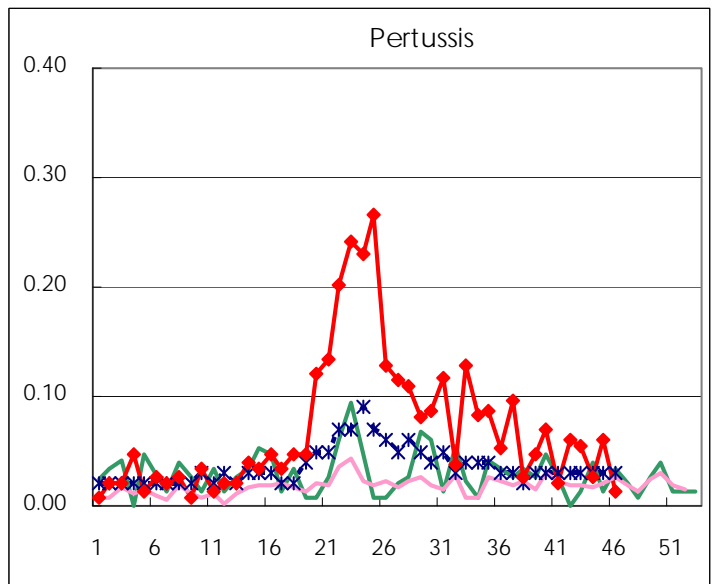
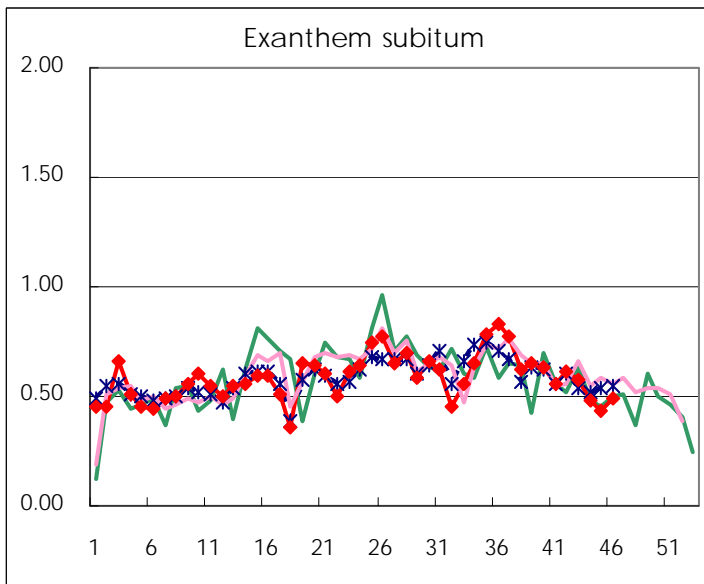
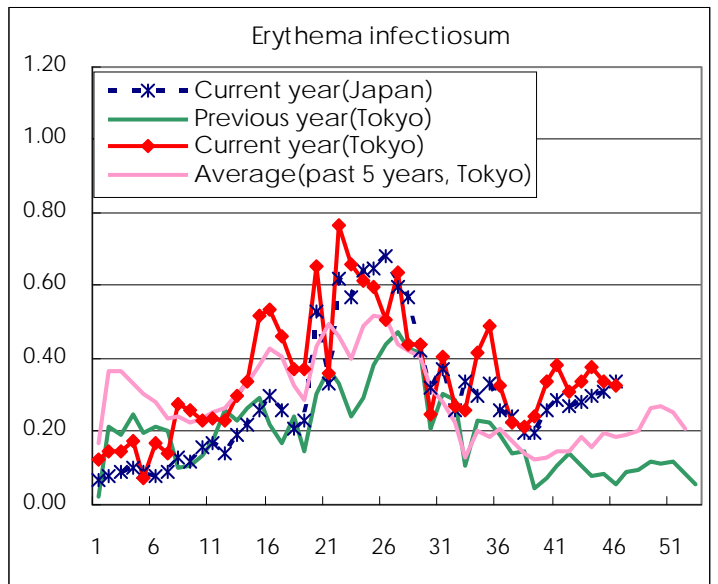
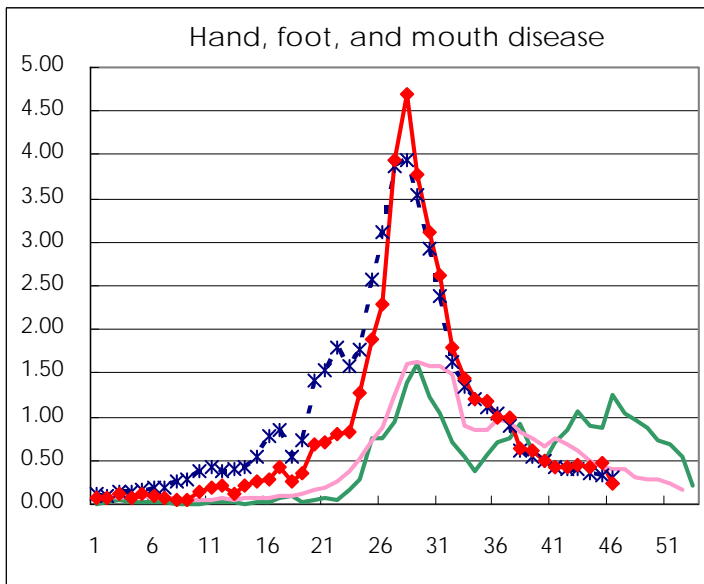
Number of patients with the diseases to be reported
by the designated clinics and hospitals

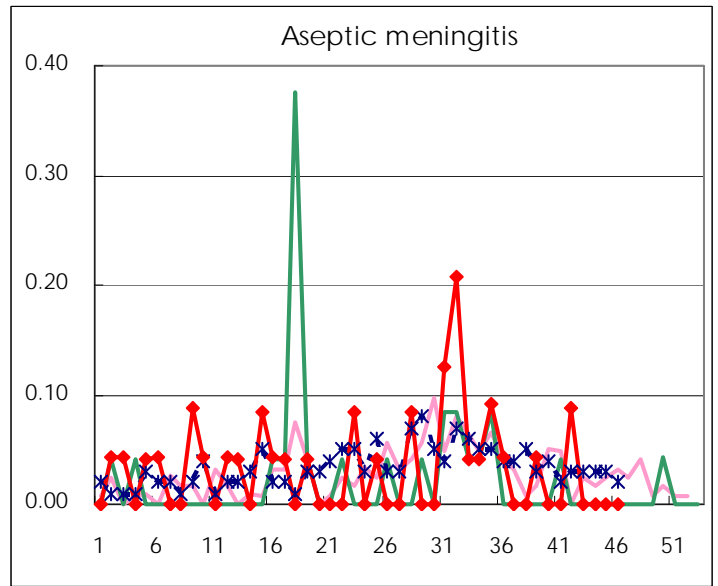
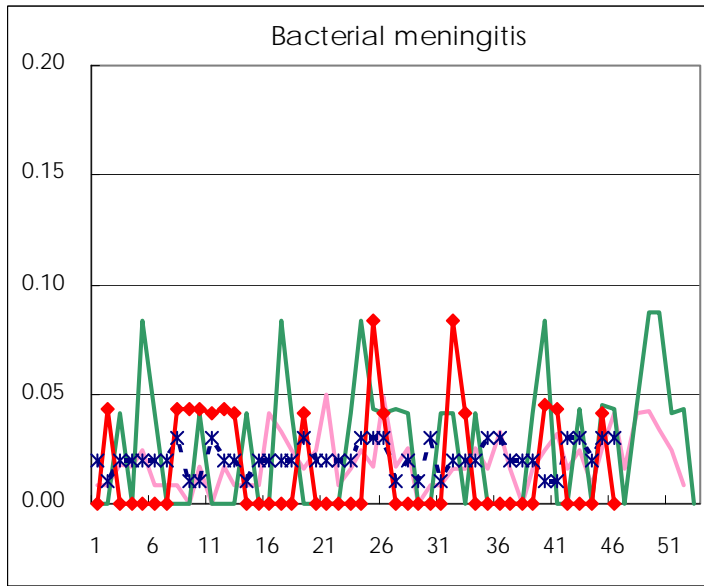
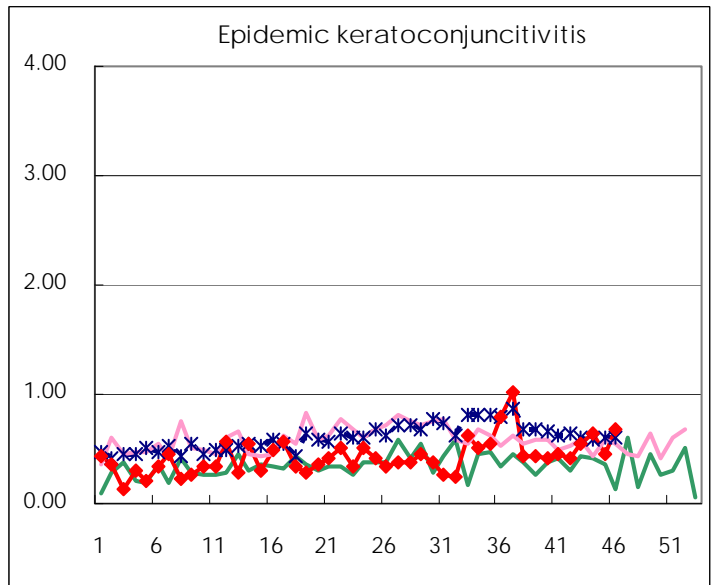
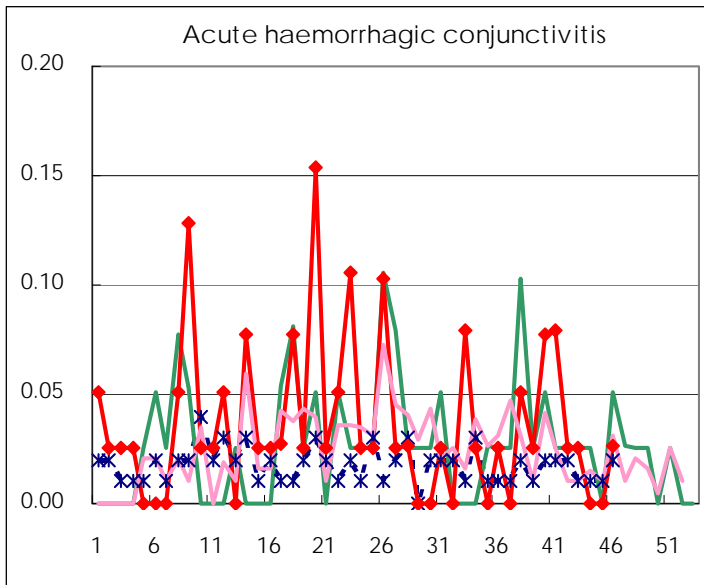
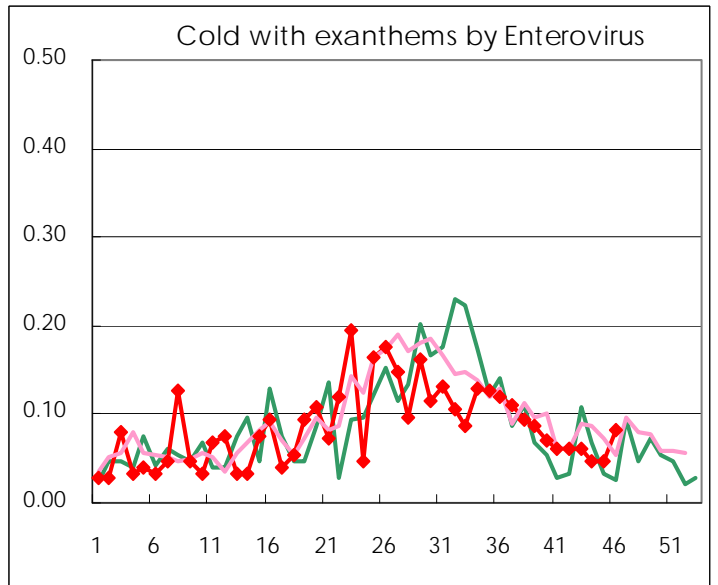
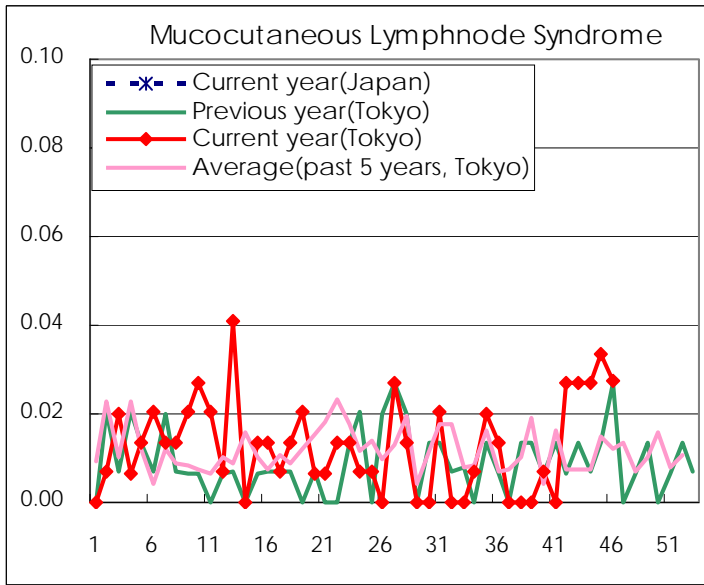
Diseases	2010				
	43rd	44th	45th	46th	/sentinel
Respiratory syncytial virus infection	70	53	60	39	0.27
Pharyngoconjunctival fever	29	37	51	39	0.27
Group A streptococcal pharyngitis	168	198	250	293	1.99
Infectious gastroenteritis	817	878	1,342	1,898	12.91
Chickenpox	91	109	156	140	0.95
Hand, foot, and mouth disease	68	65	72	34	0.23
Erythema infectiosum	50	56	50	48	0.33
Exanthem subitum	85	71	64	72	0.49
Pertussis	8	4	9	2	0.01
Herpangina	15	20	17	11	0.07
Mumps	59	66	82	71	0.48
Cold with exanthems by Enterovirus	9	7	7	12	0.08
Mucocutaneous Lymphnode Syndrome	4	4	5	4	0.03
Influenza	35	46	107	143	0.51
Acute hemorrhagic conjunctivitis	1			1	0.03
Epidemic keratoconjunctivitis	21	24	18	26	0.68
Bacterial meningitis			1		
Aseptic meningitis					
Mycoplasma pneumonia	13	13	21	20	0.95
Chlamydial pneumonia (excluding psittacosis)				1	0.05

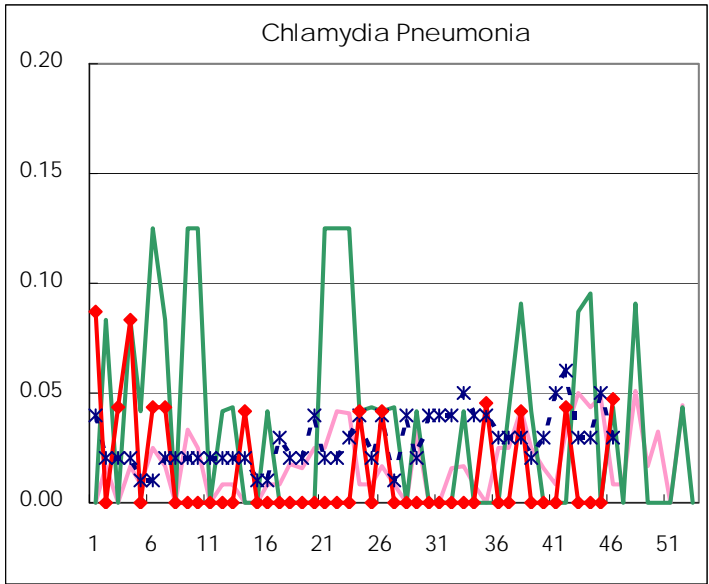
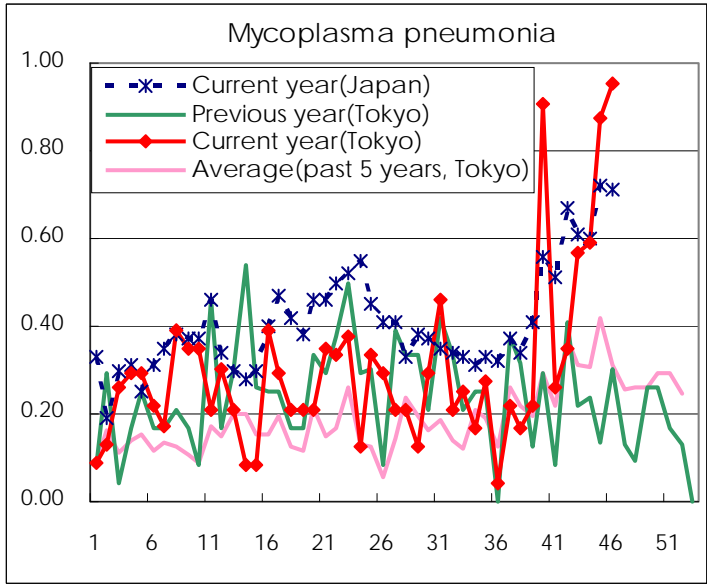
(Blank means 0.)

Disease Trend Graph (weekly reported cases per sentinel in comparison)









Number of sentinel facilities for weekly reporting		
Types of sentinels	Number of sentinels	Sentinels having reported
Pediatric	150	147
Influenza	290	283
Ophthalmic	39	38
Specially-designated	25	21

Tokyo Metropolitan Government
Infectious Disease Surveillance Center