
INFECTIOUS DISEASES WEEKLY REPORT

TOKYO IDWR

Tokyo Metropolitan Infectious Disease Surveillance Center

2 December 2010 / Number 47

Surveillance System in Tokyo, Japan

The infectious diseases which all physicians must report

All physicians must report to health centers the incidence of the diseases which are shown at page one. Health centers electronically report the individual cases to Tokyo Metropolitan Infectious Disease Surveillance Center.

The infectious diseases required to be reported by the sentinels

The numbers of patients who visit the sentinel clinics or hospitals during a week are reported to health centers in Tokyo. And they electronically report the numbers to Tokyo Metropolitan Infectious Disease Surveillance Center. We have about 400 sentinel clinics and hospitals in Tokyo.

1st Week is early January and 52nd Week is end of December.

Tokyo Metropolitan Institute of Public Health
Epidemiological Information Office

TEL:81-3-3363-3213 FAX:81-3-5332-7365
e-mail:idsc@tokyo-eiken.go.jp
URL:idsc.tokyo-eiken.go.jp/

Number of patients with the diseases which all physicians must report

Category	Diseases	Tokyo				Japan		
		44th	45th	46th	47th	Cum 2010	47th	Cum 2010
I	Ebola hemorrhagic fever							
	Crimean-Congo hemorrhagic fever							
	Smallpox							
	South American hemorrhagic fever							
	Plague							
	Marburg disease							
	Lassa fever							
II	Acute poliomyelitis							2
	Tuberculosis	59	80	64	54	3,726	267	23,350
	Diphtheria							
	Severe Acute Respiratory Syndrome(SARS)							
	Avian influenza H5N1							
III	Cholera					2		11
	Shigellosis			2		80	1	216
	Enterohemorrhagic Escherichia coli infection	1	2	3	3	330	29	3,985
	Typhoid fever	1	1	1		12	1	30
	Paratyphoid fever					5		20
IV	Hepatitis E					8		53
	West Nile fever							
	Hepatitis A		3		1	45	2	330
	Echinococcosis					1		11
	Yellow fever							
	Psittacosis							9
	Omsk hemorrhagic fever							
	Relapsing fever							1
	Kyasanur forest disease							
	Q fever							2
	Rabies							
	Coccidioidomycosis			1		1		1
	Monkeypox							
	Hemorrhagic fever with renal syndrome							
	Western equine encephalitis							
	Tick-borne encephalitis							
	Anthrax							
	Scrub typhus(Tsutsugamushi disease)				5	10	17	204
	Dengue fever	1	2			65	5	229
	Eastern equine encephalitis							
	Avian influenza (excluding H5N1)							
	Nipah virus infection							
	Japanese spotted fever					1	2	111
	Japanese encephalitis						1	4
	Epidemic typhus							
	Hantavirus pulmonary syndrome							
	Herpes B virus infection							
	Glanders							
	Brucellosis							2
	Venezuelan equine encephalitis							
Hendra virus infection								
Botulism								
Malaria	1		2		28	2	68	
Tularemia								
Lyme disease					1		12	
Lyssavirus infection(excluding rabies)								
Rift valley fever								
Melioidosis					1		3	
Legionellosis	1	2	3	2	53	8	676	
Leptospirosis					2		21	
Rocky mountain spotted fever								

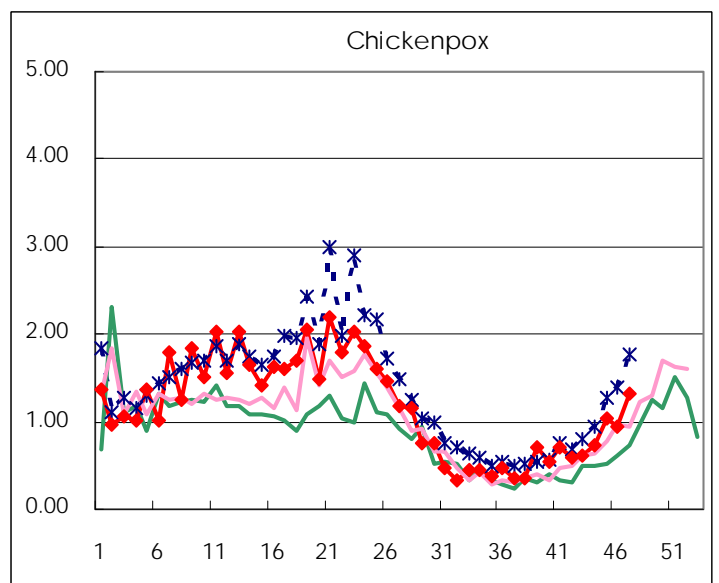
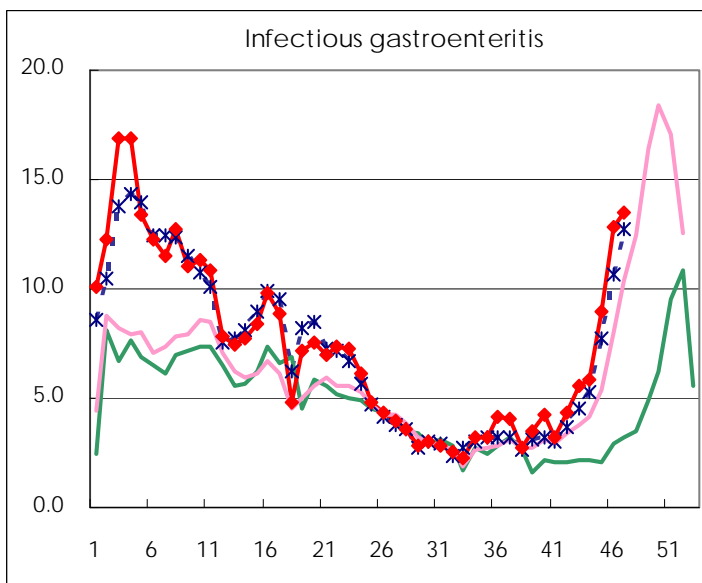
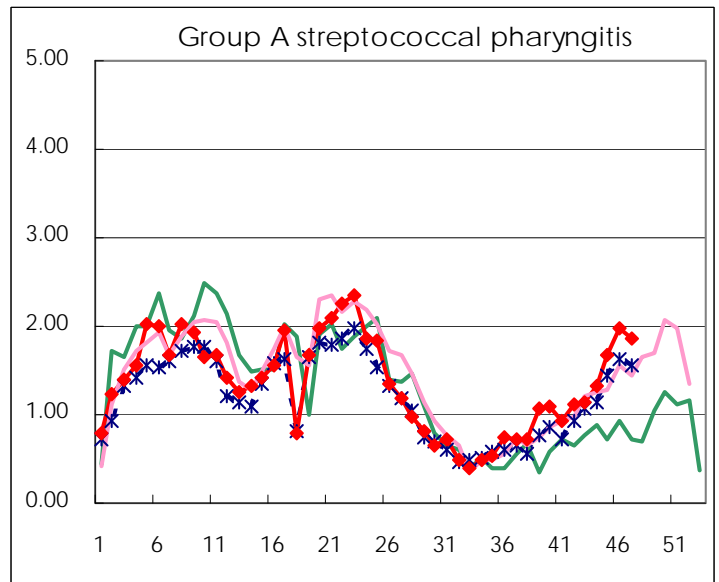
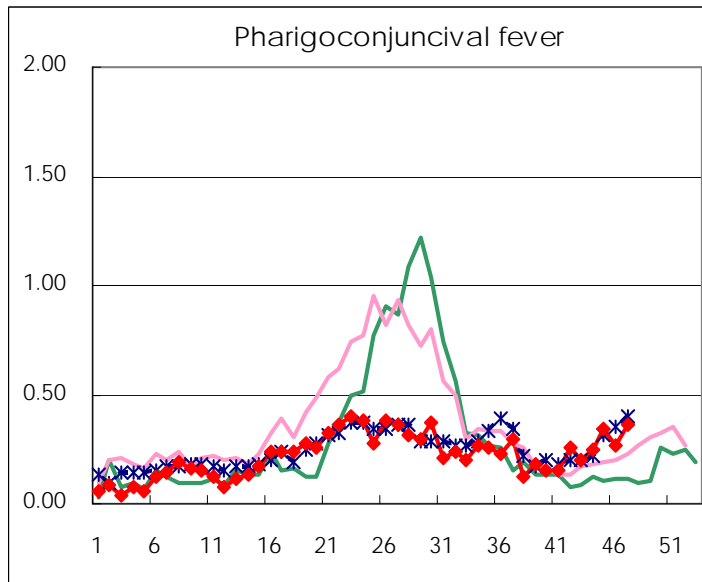
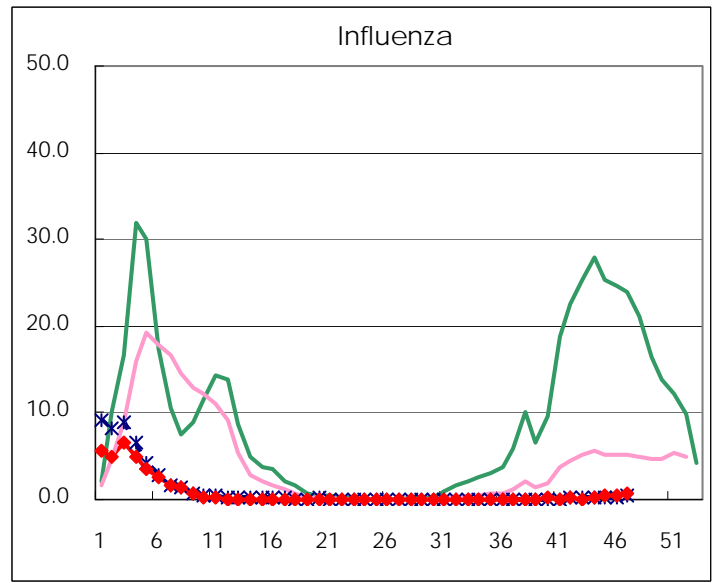
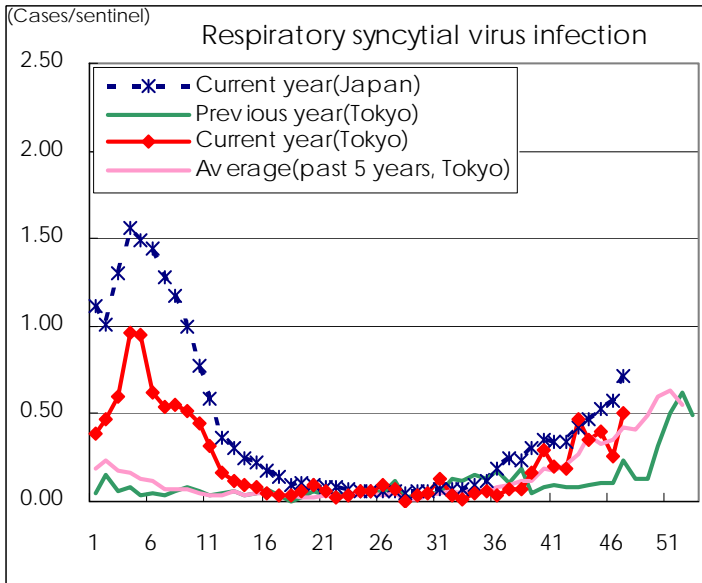
Category	Diseases	Tokyo				Japan		
		44th	45th	46th	47th	Cum 2010	47th	Cum 2010
V	Amebiasis	1	3	3		157	9	753
	Viral hepatitis(excluding hepatitis A and E)		1		1	43	3	192
	Acute encephalitis(excluding JE and WNE)					14	3	211
	Cryptosporidiosis					3		16
	Creutzfeldt-Jakob disease				1	13	1	144
	Severe invasive streptococcal infections(TSLS)					18	2	109
	Acquired immunodeficiency syndrome (AIDS)	12	11	7	4	452	9	1,349
	Giardiasis					13	1	75
	Meningococcal meningitis							7
	Congenital rubella syndrome							
	Syphilis	3	4	1	4	157	2	550
	Tetanus					5	1	95
	Vancomycin-resistant S. aureus infection							
	Vancomycin-resistant Enterococcus infection				2	14	2	104
	Rubella					11		78
Measles			1	1	68	5	422	
Novel Flu	Novel influenza (pandemic A/H1N1 2009)						—	

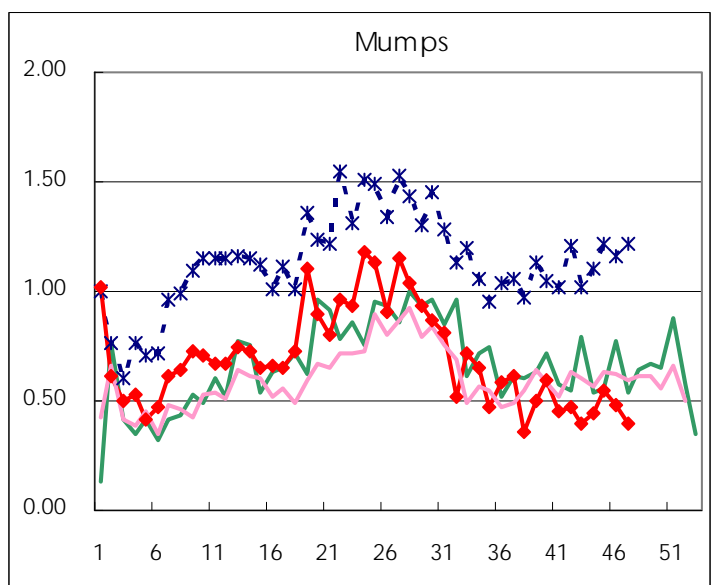
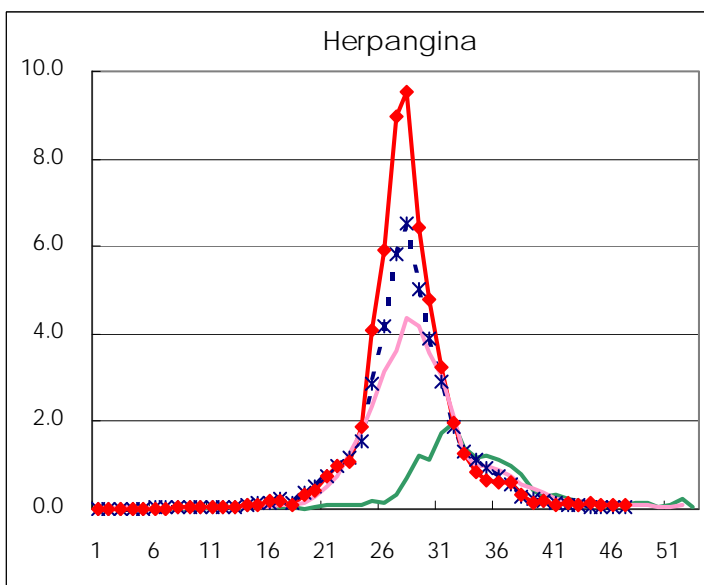
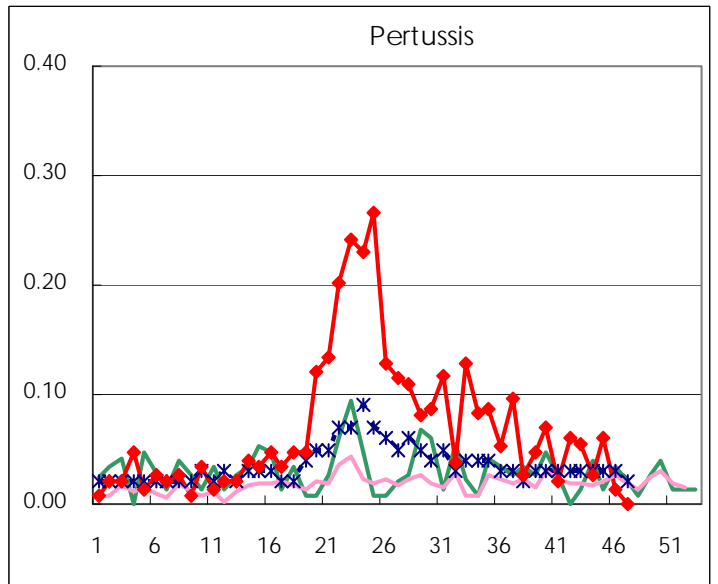
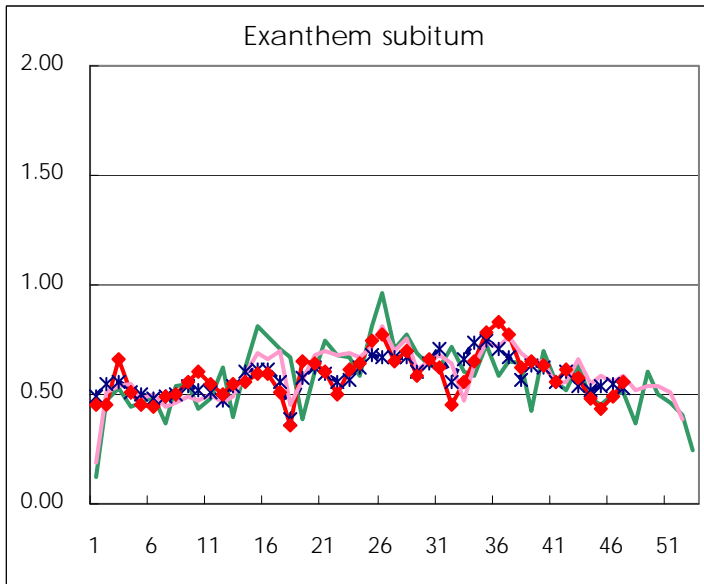
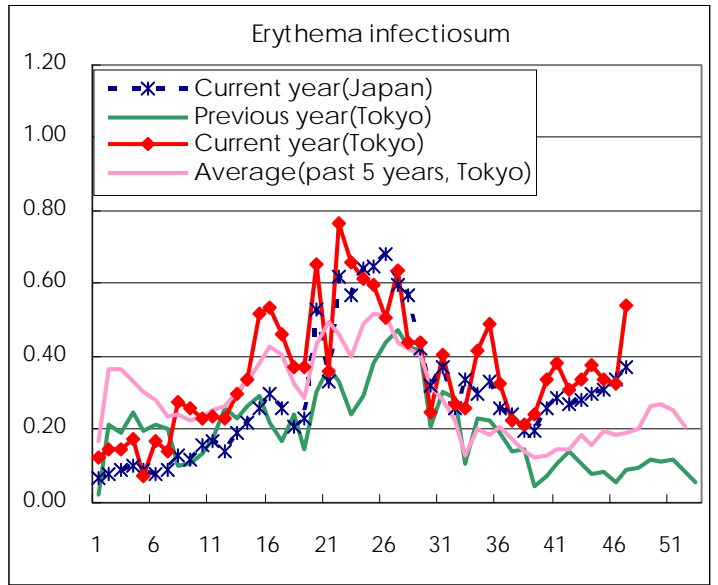
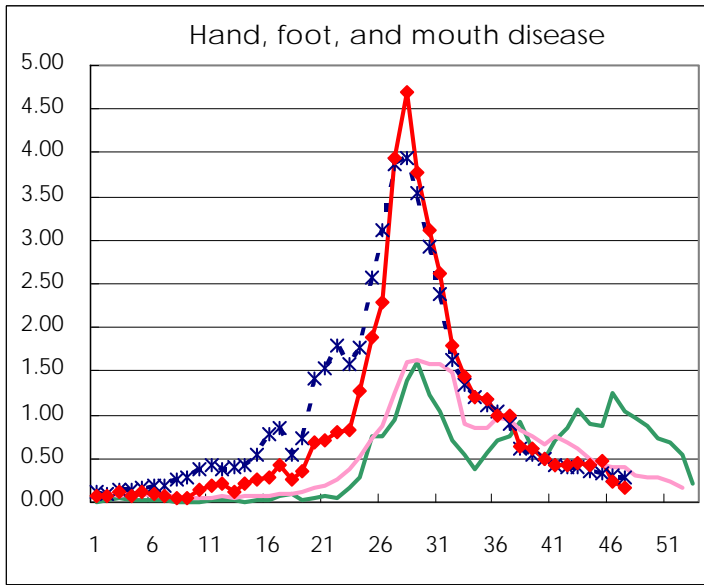
Number of patients with the diseases to be reported
by the designated clinics and hospitals

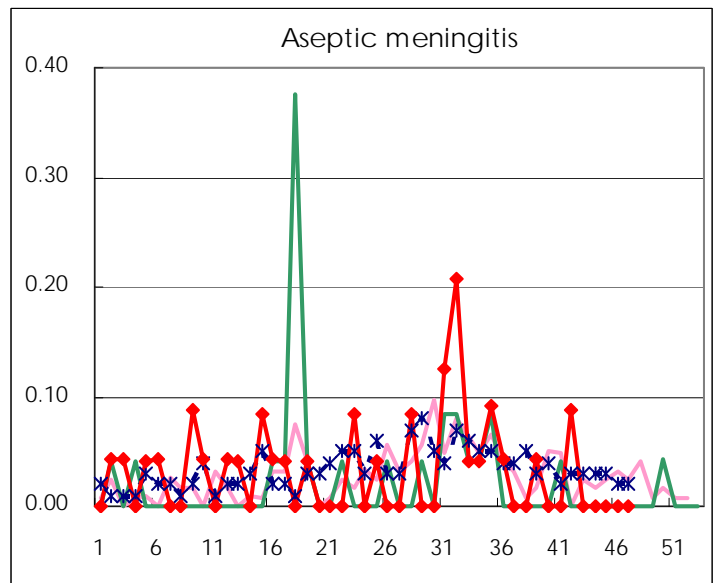
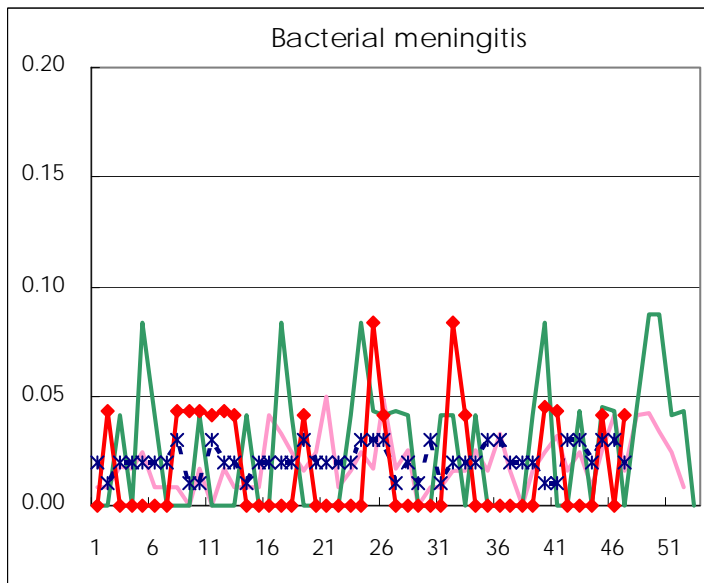
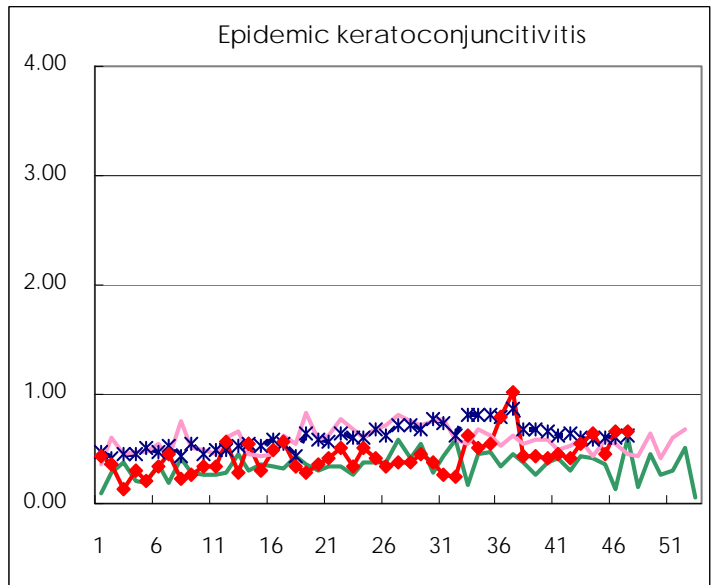
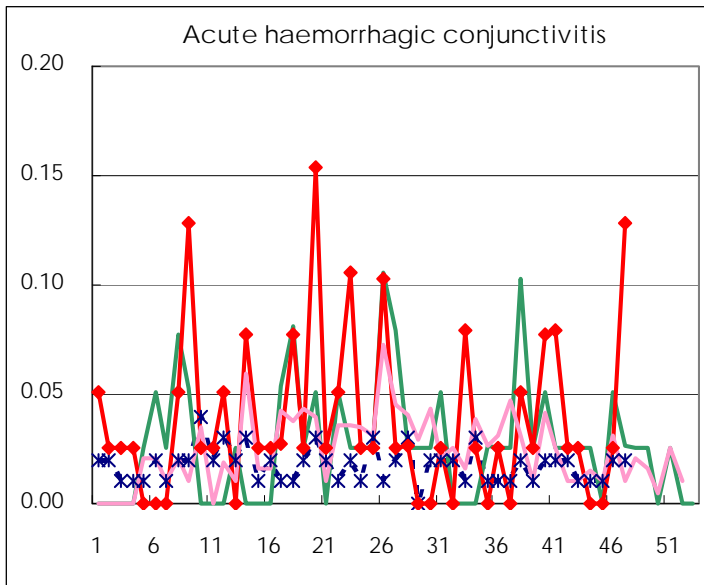
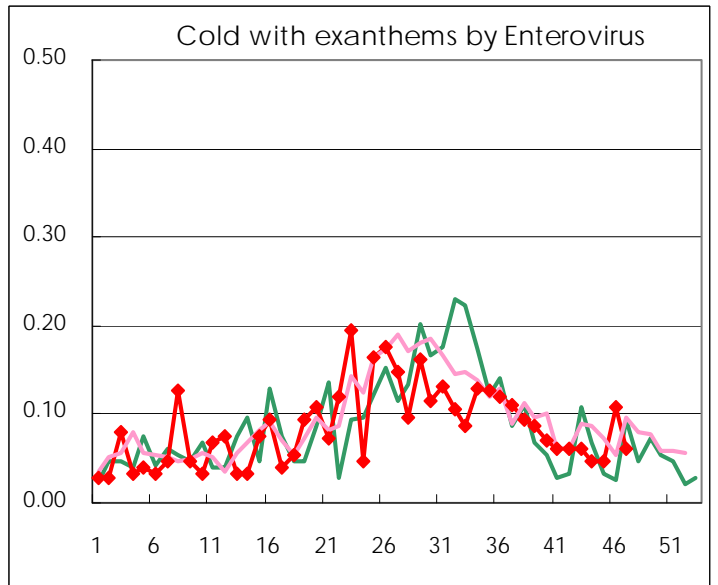
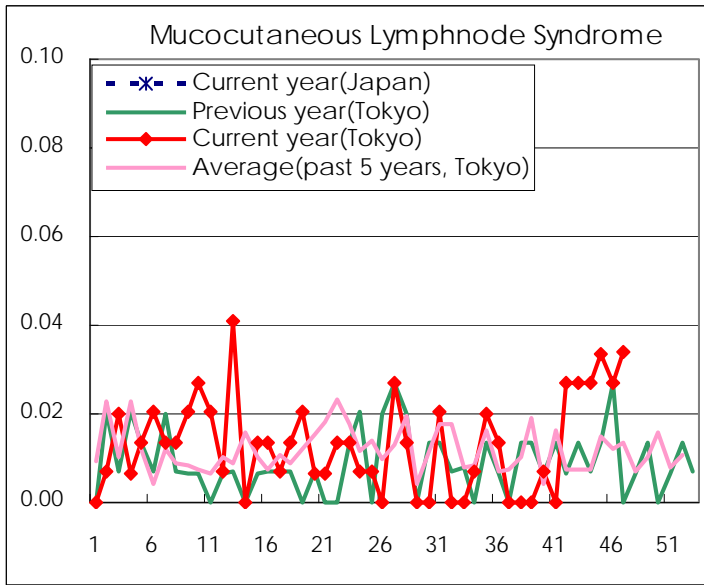
Diseases	2010				
	44th	45th	46th	47th	/sentinel
Respiratory syncytial virus infection	53	60	39	74	0.50
Pharyngoconjunctival fever	37	51	39	54	0.36
Group A streptococcal pharyngitis	198	250	294	275	1.86
Infectious gastroenteritis	878	1,342	1,899	1,994	13.47
Chickenpox	109	156	141	196	1.32
Hand, foot, and mouth disease	65	72	34	26	0.18
Erythema infectiosum	56	50	48	80	0.54
Exanthem subitum	71	64	73	82	0.55
Pertussis	4	9	2		
Herpangina	20	17	11	11	0.07
Mumps	66	82	71	58	0.39
Cold with exanthems by Enterovirus	7	7	16	9	0.06
Mucocutaneous Lymphnode Syndrome	4	5	4	5	0.03
Influenza	44	107	143	171	0.60
Acute hemorrhagic conjunctivitis			1	5	0.13
Epidemic keratoconjunctivitis	24	18	26	26	0.67
Bacterial meningitis		1		1	0.04
Aseptic meningitis					
Mycoplasma pneumonia	13	21	20	17	0.71
Chlamydial pneumonia (excluding psittacosis)			1	2	0.08

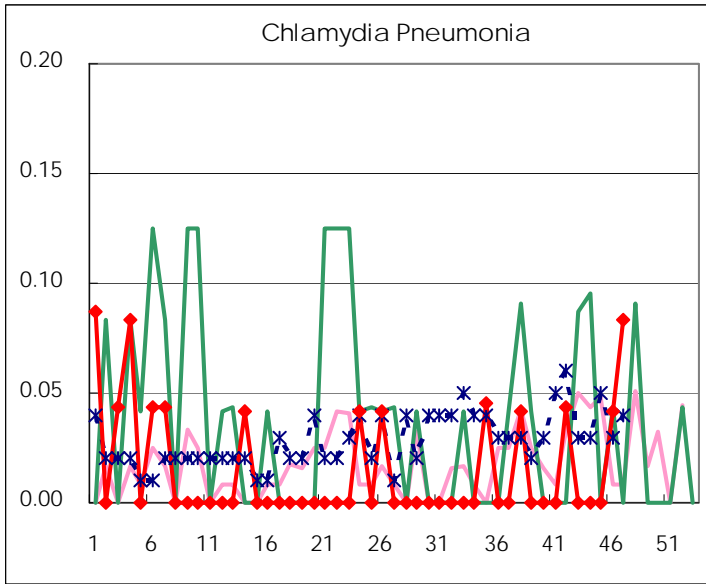
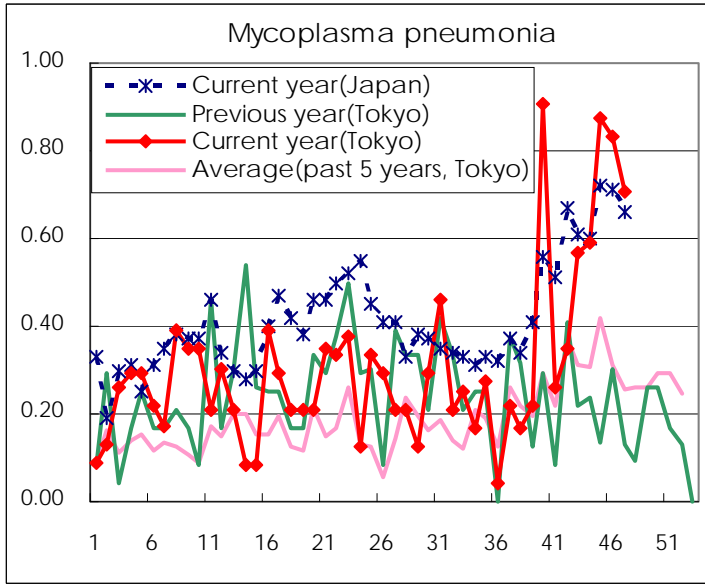
(Blank means 0.)

Disease Trend Graph (weekly reported cases per sentinel in comparison)









Number of sentinel facilities for weekly reporting		
Types of sentinels	Number of sentinels	Sentinels having reported
Pediatric	150	148
Influenza	290	286
Ophthalmic	39	39
Specially-designated	25	24

Tokyo Metropolitan Government
Infectious Disease Surveillance Center