
INFECTIOUS DISEASES WEEKLY REPORT

TOKYO IDWR

Tokyo Metropolitan Infectious Disease Surveillance Center

9 December 2010 / Number 48

Surveillance System in Tokyo, Japan

The infectious diseases which all physicians must report

All physicians must report to health centers the incidence of the diseases which are shown at page one. Health centers electronically report the individual cases to Tokyo Metropolitan Infectious Disease Surveillance Center.

The infectious diseases required to be reported by the sentinels

The numbers of patients who visit the sentinel clinics or hospitals during a week are reported to health centers in Tokyo. And they electronically report the numbers to Tokyo Metropolitan Infectious Disease Surveillance Center. We have about 400 sentinel clinics and hospitals in Tokyo.

1st Week is early January and 52nd Week is end of December.

Tokyo Metropolitan Institute of Public Health
Epidemiological Information Office

TEL:81-3-3363-3213 FAX:81-3-5332-7365

e-mail:idsc@tokyo-eiken.go.jp

URL:idsc.tokyo-eiken.go.jp/

Number of patients with the diseases which all physicians must report

Category	Diseases	Tokyo				Japan		
		45th	46th	47th	48th	Cum 2010	48th	Cum 2010
I	Ebola hemorrhagic fever							
	Crimean-Congo hemorrhagic fever							
	Smallpox							
	South American hemorrhagic fever							
	Plague							
	Marburg disease							
	Lassa fever							
II	Acute poliomyelitis							2
	Tuberculosis	82	70	61	60	3,828	318	23,955
	Diphtheria							
	Severe Acute Respiratory Syndrome(SARS)							
	Avian influenza H5N1							
III	Cholera					2		11
	Shigellosis		2		3	83	3	220
	Enterohemorrhagic Escherichia coli infection	2	3	3	2	332	31	4,028
	Typhoid fever	1	1			12		30
	Paratyphoid fever					5	1	21
IV	Hepatitis E					8		56
	West Nile fever							
	Hepatitis A	3		1		45	3	333
	Echinococcosis					1		11
	Yellow fever							
	Psittacosis						1	10
	Omsk hemorrhagic fever							
	Relapsing fever							1
	Kyasanur forest disease							
	Q fever							2
	Rabies							
	Coccidioidomycosis		1			1		1
	Monkeypox							
	Hemorrhagic fever with renal syndrome							
	Western equine encephalitis							
	Tick-borne encephalitis							
	Anthrax							
	Scrub typhus(Tsutsugamushi disease)			5		10	42	254
	Dengue fever	2			3	68	3	235
	Eastern equine encephalitis							
	Avian influenza (excluding H5N1)							
	Nipah virus infection							
	Japanese spotted fever					1	1	116
	Japanese encephalitis							4
	Epidemic typhus							
	Hantavirus pulmonary syndrome							
	Herpes B virus infection							
	Glanders							
	Brucellosis							2
	Venezuelan equine encephalitis							
	Hendra virus infection							
Botulism								
Malaria		2			28	2	70	
Tularemia								
Lyme disease					1		12	
Lyssavirus infection(excluding rabies)								
Rift valley fever								
Melioidosis					1		3	
Legionellosis	2	3	2		53	4	682	
Leptospirosis					2	1	22	
Rocky mountain spotted fever								

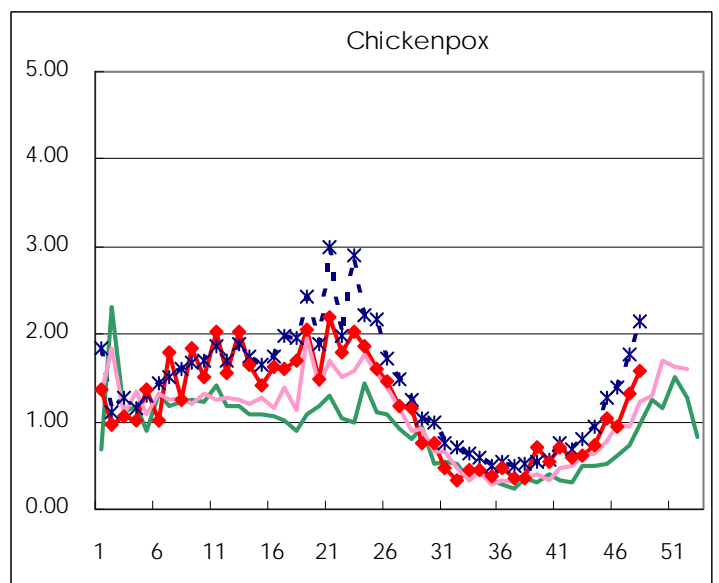
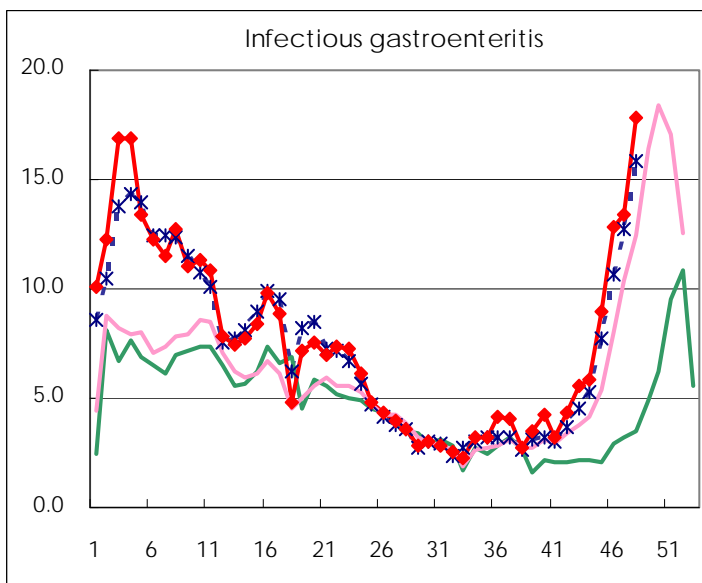
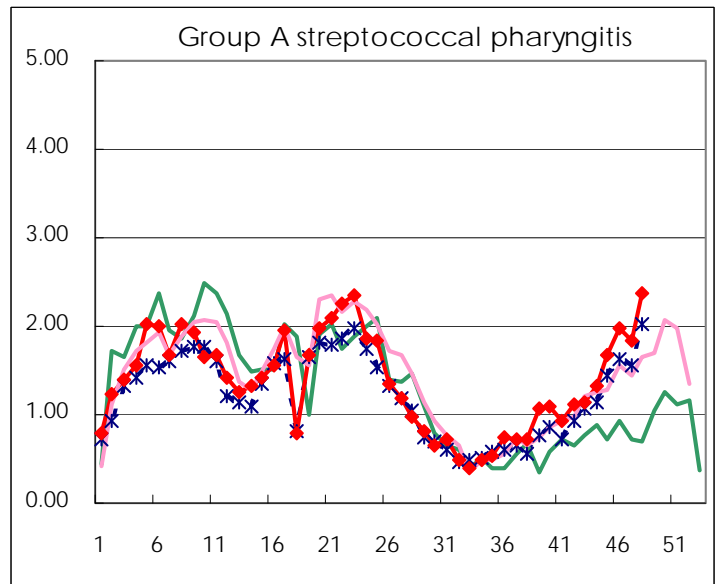
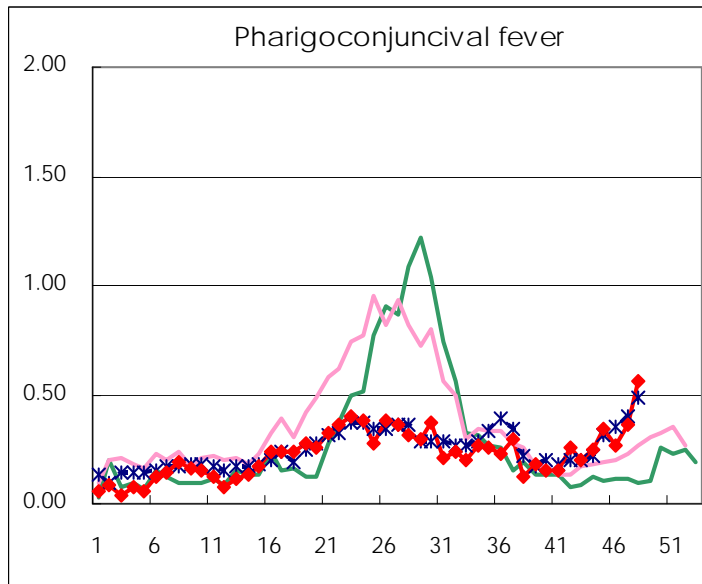
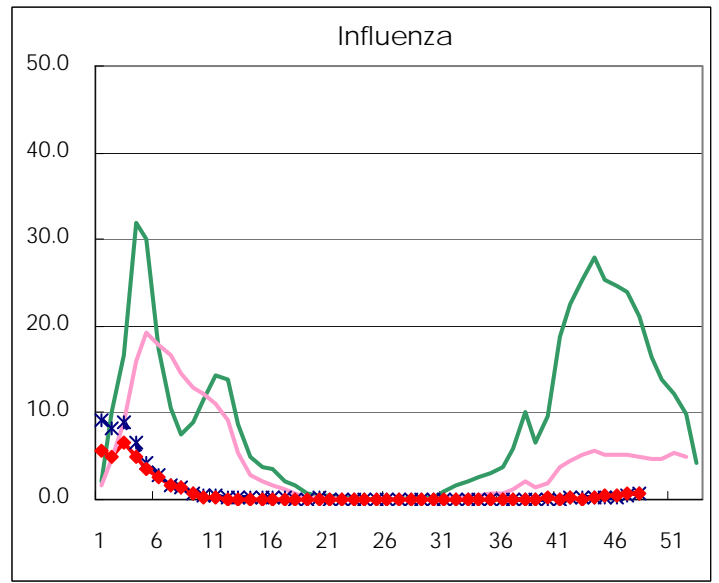
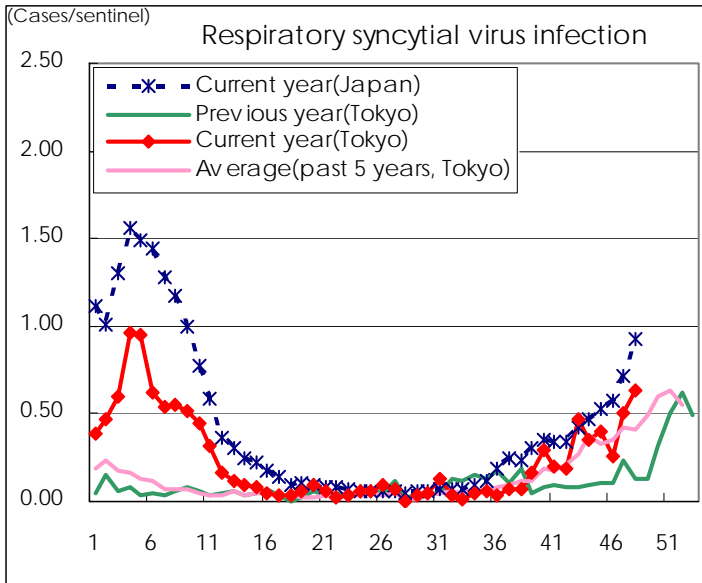
Category	Diseases	Tokyo				Japan		
		45th	46th	47th	48th	Cum 2010	48th	Cum 2010
V	Amebiasis	3	3		3	160	10	769
	Viral hepatitis(excluding hepatitis A and E)	1		1	1	44	1	194
	Acute encephalitis(excluding JE and WNE)					14	1	215
	Cryptosporidiosis					3		16
	Creutzfeldt-Jakob disease			1		13	2	148
	Severe invasive streptococcal infections(TSLS)				1	19	2	114
	Acquired immunodeficiency syndrome (AIDS)	11	7	5	6	459	14	1,376
	Giardiasis					13	1	77
	Meningococcal meningitis							7
	Congenital rubella syndrome							
	Syphilis	4	1	4	1	158	6	562
	Tetanus					5	3	98
	Vancomycin-resistant S. aureus infection							
	Vancomycin-resistant Enterococcus infection			2	1	15	2	106
	Rubella				1	12	2	81
Measles		1	1	1	69	2	428	
Novel Flu	Novel influenza (pandemic A/H1N1 2009)						—	

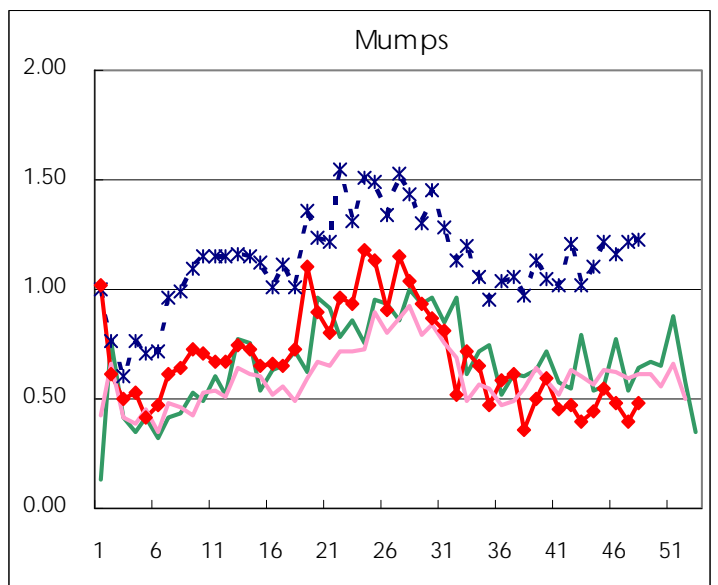
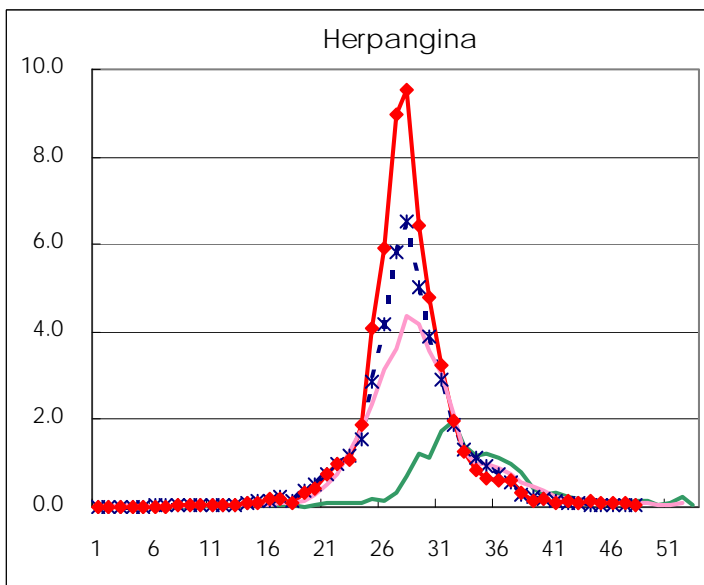
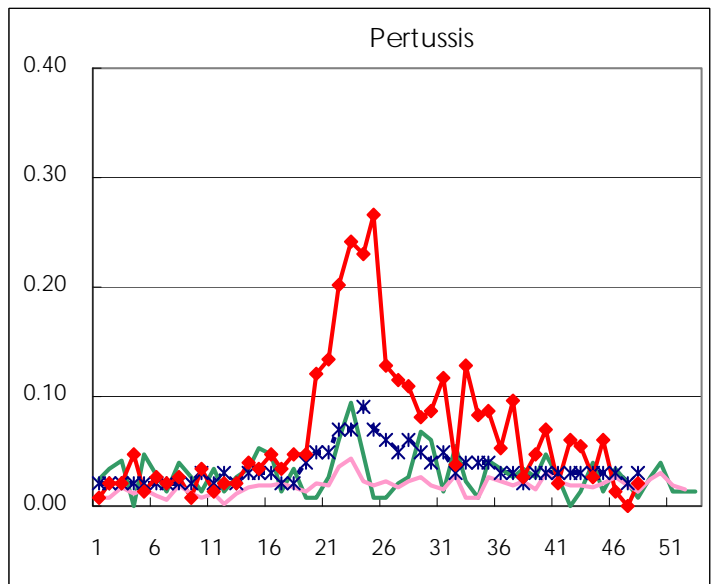
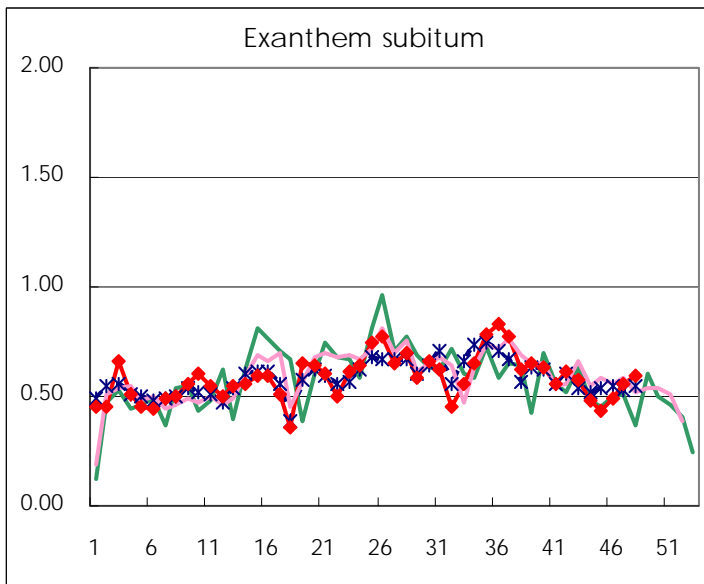
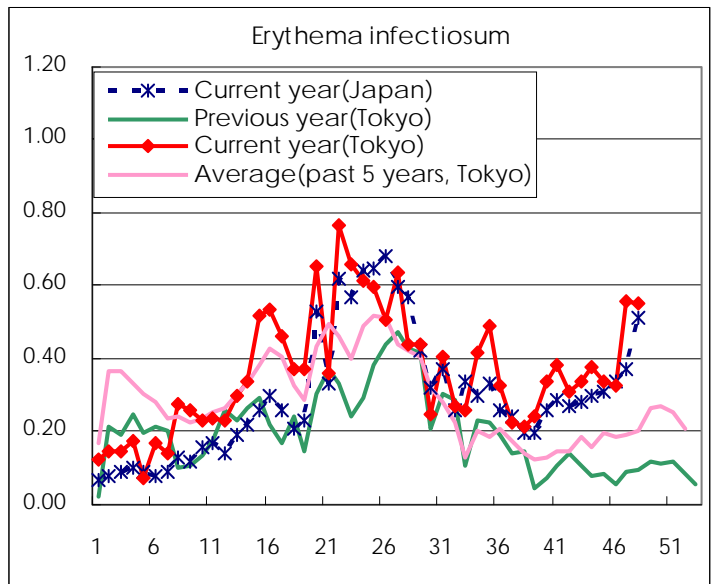
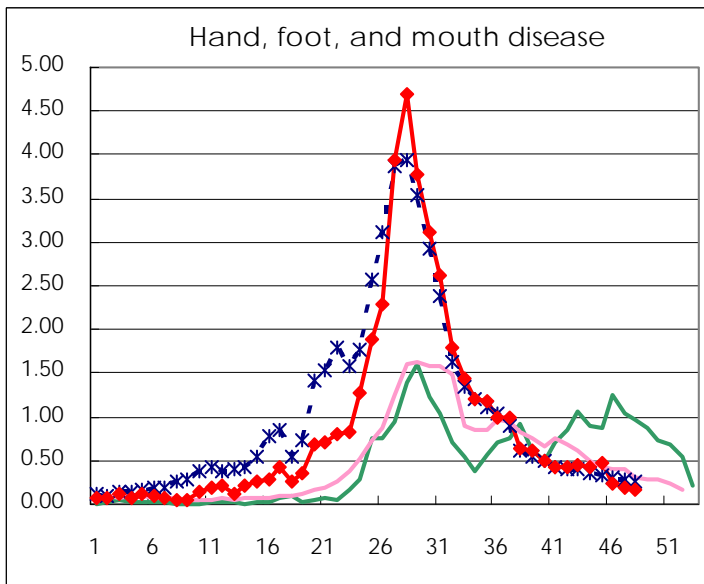
Number of patients with the diseases to be reported
by the designated clinics and hospitals

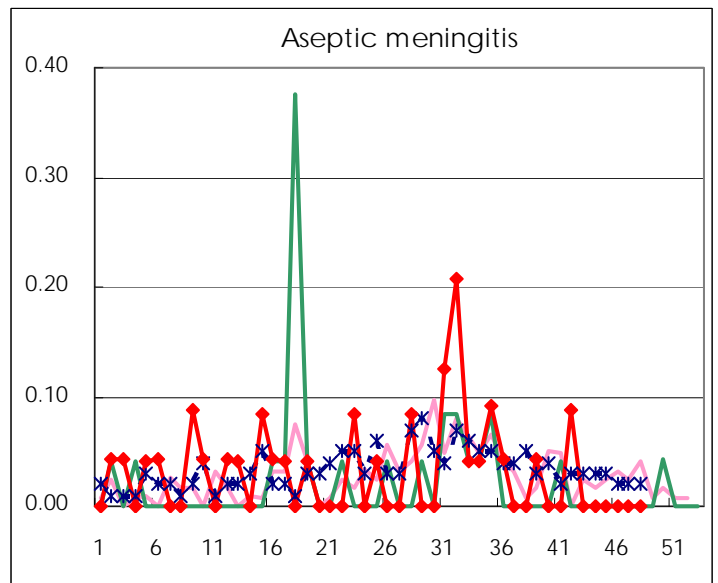
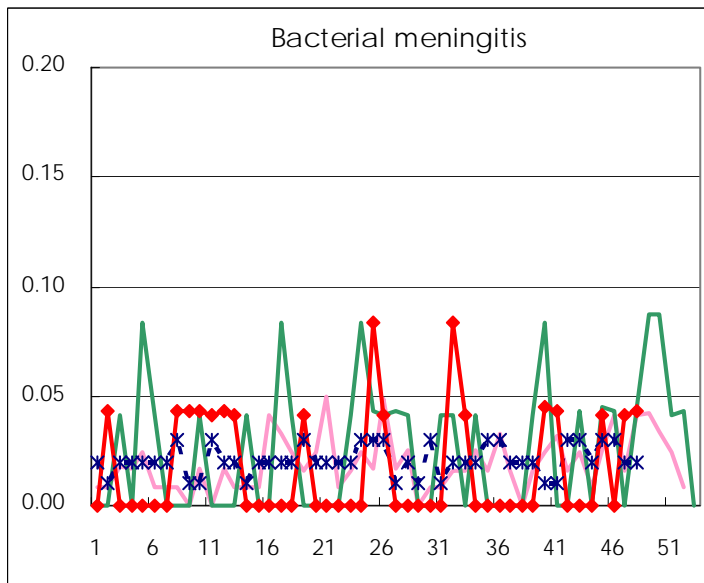
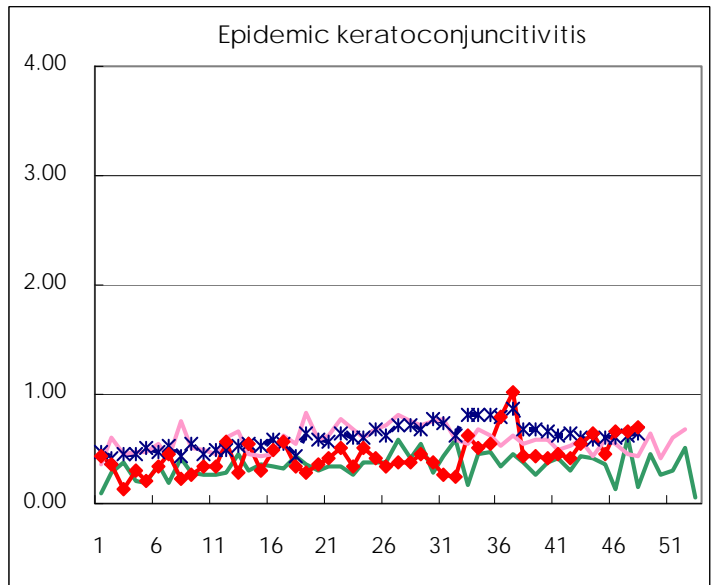
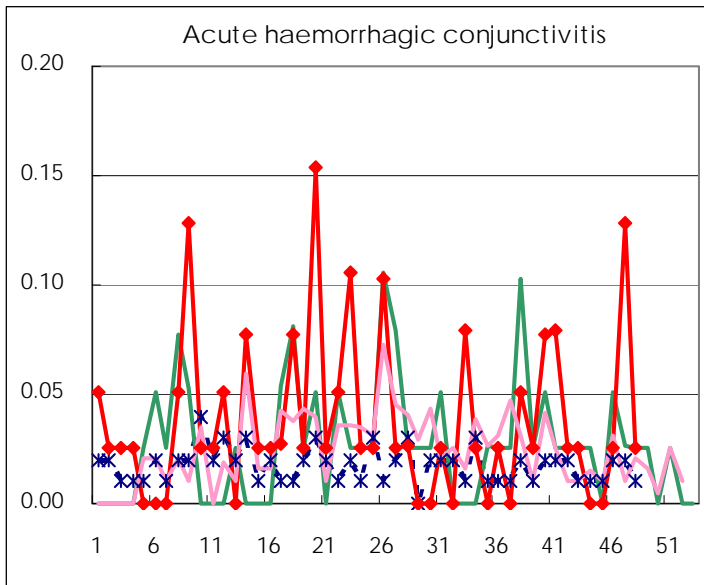
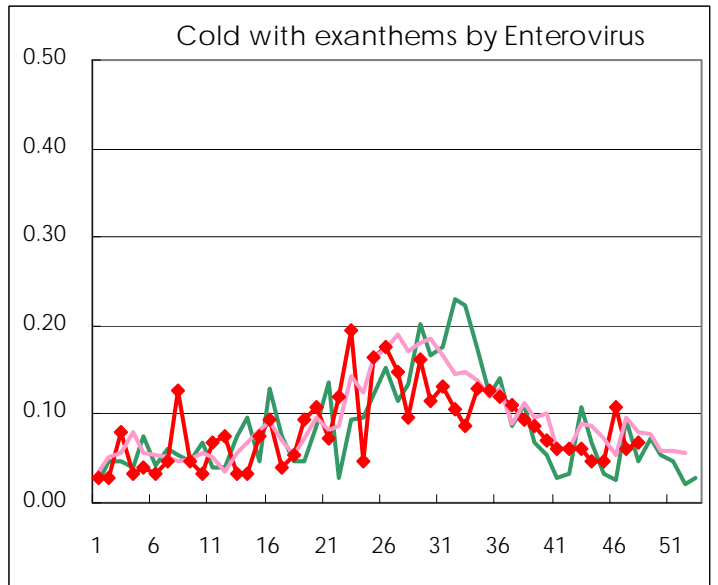
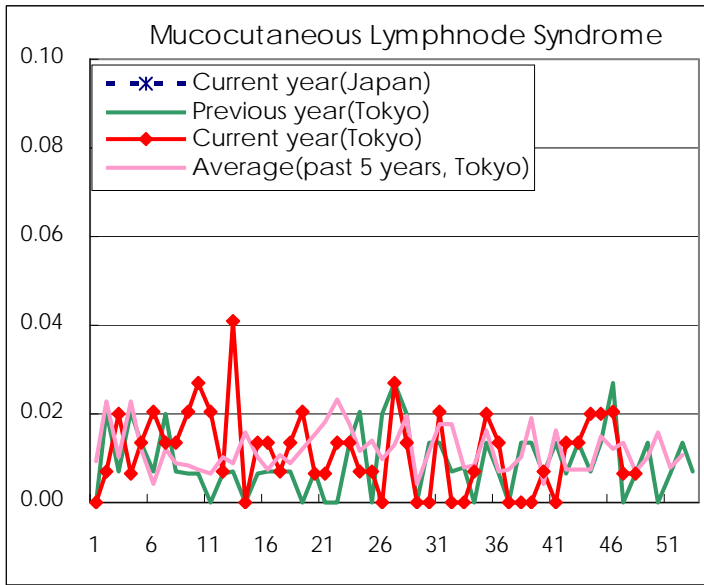
Diseases	2010				
	45th	46th	47th	48th	/sentinel
Respiratory syncytial virus infection	60	39	75	94	0.63
Pharyngoconjunctival fever	51	39	54	84	0.56
Group A streptococcal pharyngitis	250	294	275	352	2.36
Infectious gastroenteritis	1342	1,899	2,003	2,652	17.80
Chickenpox	156	141	199	236	1.58
Hand, foot, and mouth disease	72	34	27	25	0.17
Erythema infectiosum	50	48	84	82	0.55
Exanthem subitum	64	73	83	88	0.59
Pertussis	9	2		3	0.02
Herpangina	17	11	11	6	0.04
Mumps	82	71	59	71	0.48
Cold with exanthems by Enterovirus	7	16	9	10	0.07
Mucocutaneous Lymphnode Syndrome	3	3	1	1	0.01
Influenza	107	143	172	219	0.76
Acute hemorrhagic conjunctivitis		1	5	1	0.03
Epidemic keratoconjunctivitis	18	26	26	27	0.69
Bacterial meningitis	1		1	1	0.04
Aseptic meningitis					
Mycoplasma pneumonia	21	20	17	15	0.65
Chlamydial pneumonia (excluding psittacosis)		1	2	1	0.04

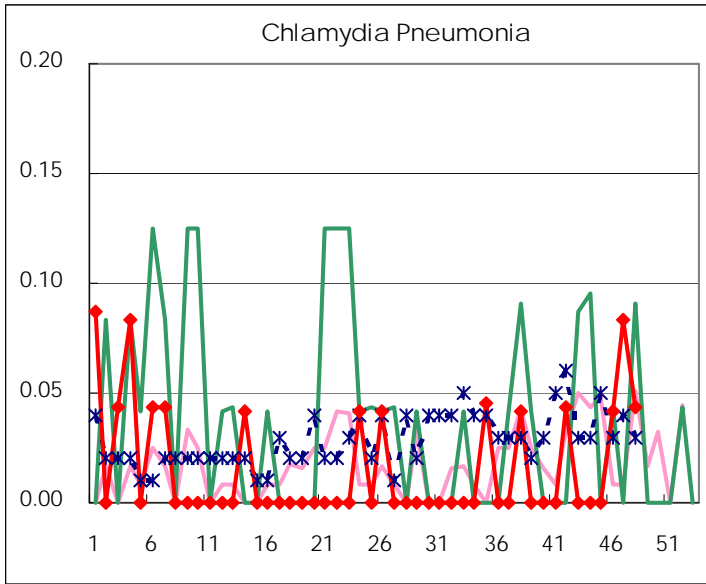
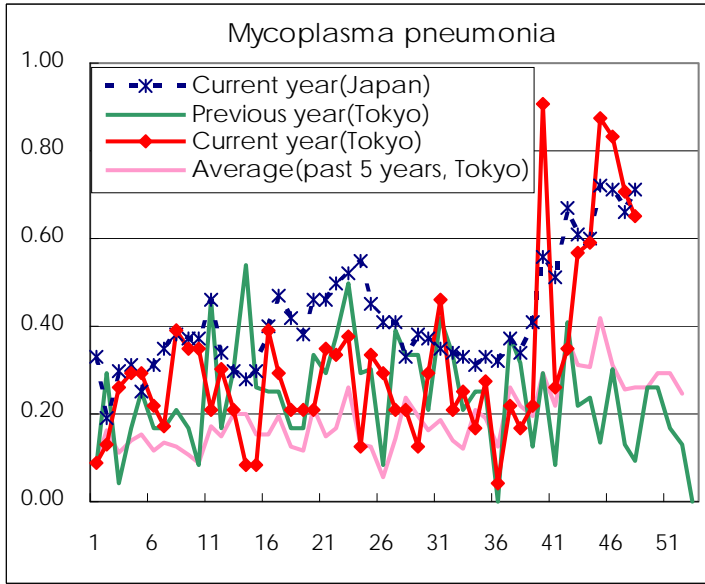
(Blank means 0.)

Disease Trend Graph (weekly reported cases per sentinel in comparison)









Number of sentinel facilities for weekly reporting		
Types of sentinels	Number of sentinels	Sentinels having reported
Pediatric	150	149
Influenza	290	288
Ophthalmic	39	39
Specially-designated	25	23

Tokyo Metropolitan Government
Infectious Disease Surveillance Center