
INFECTIOUS DISEASES WEEKLY REPORT

TOKYO IDWR

Tokyo Metropolitan Infectious Disease Surveillance Center

16 December 2010 / Number 49

Surveillance System in Tokyo, Japan

The infectious diseases which all physicians must report

All physicians must report to health centers the incidence of the diseases which are shown at page one. Health centers electronically report the individual cases to Tokyo Metropolitan Infectious Disease Surveillance Center.

The infectious diseases required to be reported by the sentinels

The numbers of patients who visit the sentinel clinics or hospitals during a week are reported to health centers in Tokyo. And they electronically report the numbers to Tokyo Metropolitan Infectious Disease Surveillance Center. We have about 400 sentinel clinics and hospitals in Tokyo.

1st Week is early January and 52nd Week is end of December.

Tokyo Metropolitan Institute of Public Health
Epidemiological Information Office

TEL:81-3-3363-3213 FAX:81-3-5332-7365

e-mail:idsc@tokyo-eiken.go.jp

URL:idsc.tokyo-eiken.go.jp/

Number of patients with the diseases which all physicians must report

Category	Diseases	Tokyo				Cum 2010	Japan	
		46th	47th	48th	49th		49th	Cum 2010
I	Ebola hemorrhagic fever							
	Crimean-Congo hemorrhagic fever							
	Smallpox							
	South American hemorrhagic fever							
	Plague							
	Marburg disease							
	Lassa fever							
II	Acute poliomyelitis							2
	Tuberculosis	76	67	68	58	3,921	312	24,506
	Diphtheria							
	Severe Acute Respiratory Syndrome(SARS)							
	Avian influenza H5N1							
III	Cholera					2		11
	Shigellosis	2		3	1	84	4	225
	Enterohemorrhagic Escherichia coli infection	3	3	2	3	335	28	4,063
	Typhoid fever	1				12		30
	Paratyphoid fever					5		21
IV	Hepatitis E					8		59
	West Nile fever							
	Hepatitis A		1			45	1	334
	Echinococcosis					1		11
	Yellow fever							
	Psittacosis							10
	Omsk hemorrhagic fever							
	Relapsing fever							1
	Kyasanur forest disease							
	Q fever							2
	Rabies							
	Coccidioidomycosis	1				1		1
	Monkeypox							
	Hemorrhagic fever with renal syndrome							
	Western equine encephalitis							
	Tick-borne encephalitis							
	Anthrax							
	Scrub typhus(Tsutsugamushi disease)		5		1	11	40	308
	Dengue fever			3		68	2	236
	Eastern equine encephalitis							
	Avian influenza (excluding H5N1)							
	Nipah virus infection							
	Japanese spotted fever					1		119
	Japanese encephalitis							4
	Epidemic typhus							
	Hantavirus pulmonary syndrome							
	Herpes B virus infection							
	Glanders							
	Brucellosis							2
	Venezuelan equine encephalitis							
Hendra virus infection								
Botulism								
Malaria	2				28	1	71	
Tularemia								
Lyme disease					1		12	
Lyssavirus infection(excluding rabies)								
Rift valley fever								
Melioidosis					1		3	
Legionellosis	3	2			53	11	695	
Leptospirosis					2		22	
Rocky mountain spotted fever								

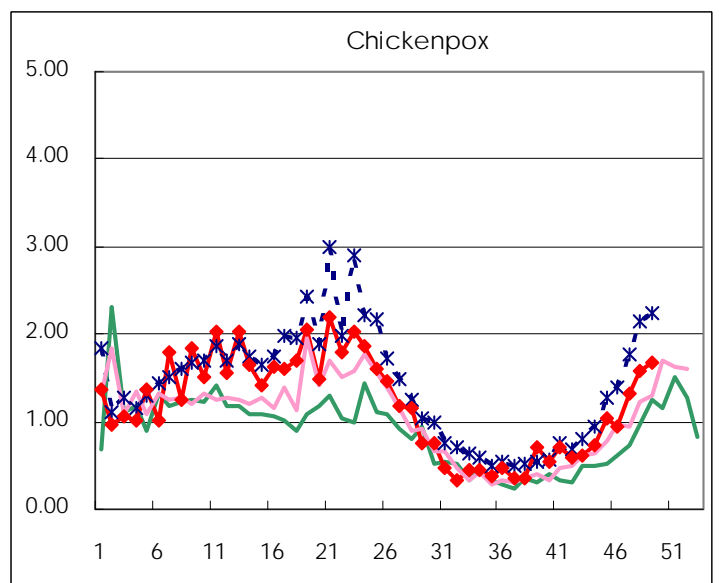
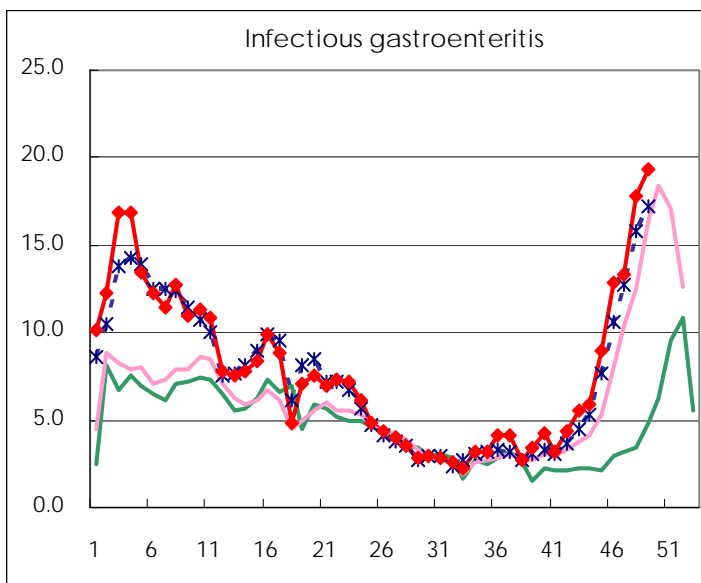
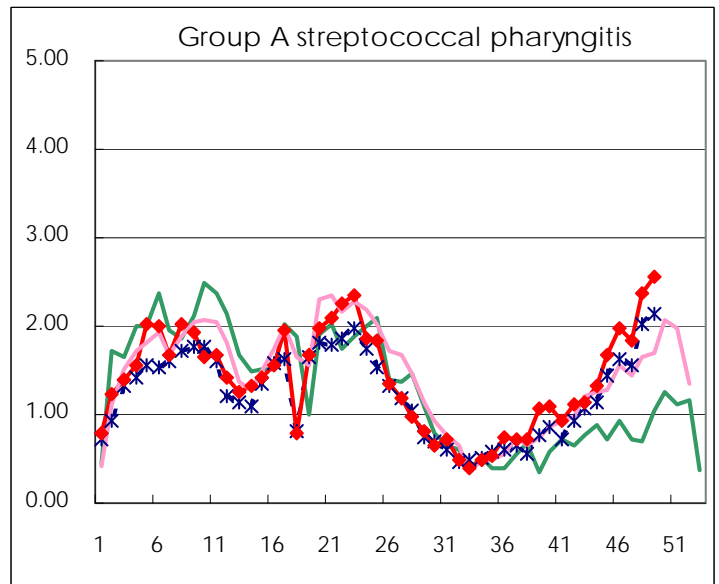
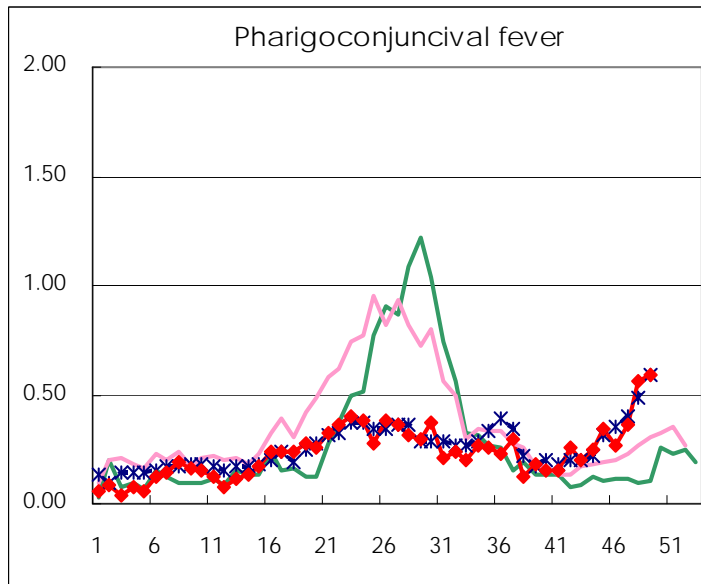
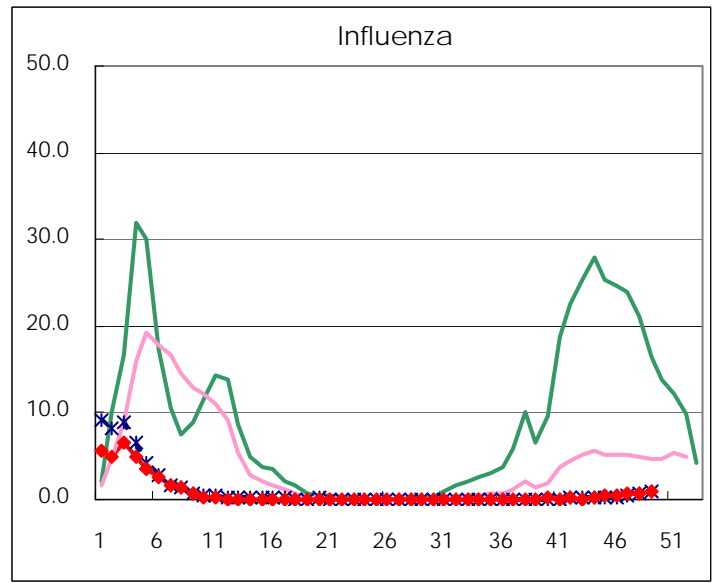
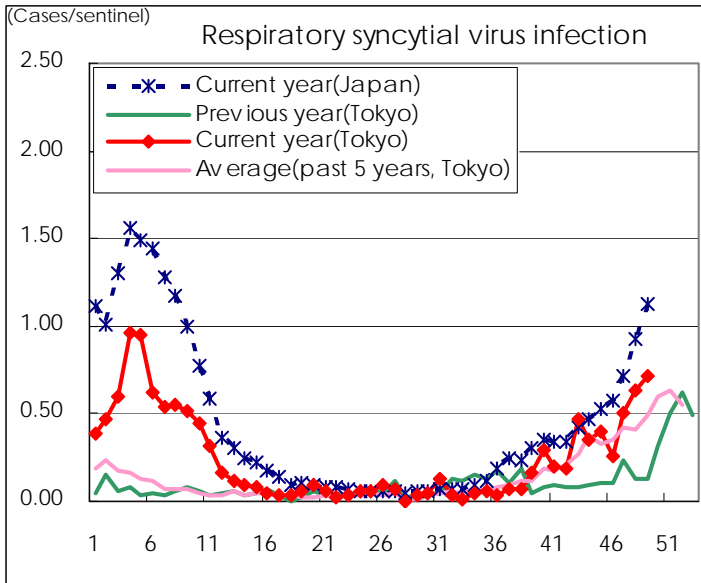
Category	Diseases	Tokyo				Japan		
		46th	47th	48th	49th	Cum 2010	49th	Cum 2010
V	Amebiasis	3		3	7	167	10	787
	Viral hepatitis(excluding hepatitis A and E)		1	1	2	46	2	203
	Acute encephalitis(excluding JE and WNE)					14	3	221
	Cryptosporidiosis					3		16
	Creutzfeldt-Jakob disease		1		1	14	1	154
	Severe invasive streptococcal infections(TSLS)			1		19	2	119
	Acquired immunodeficiency syndrome (AIDS)	7	5	6	14	473	20	1,409
	Giardiasis					13		78
	Meningococcal meningitis							7
	Congenital rubella syndrome							
	Syphilis	1	4	1	5	163	5	574
	Tetanus					5		98
	Vancomycin-resistant S. aureus infection							
	Vancomycin-resistant Enterococcus infection		2	1		15	3	109
	Rubella			1		12	2	83
Measles	1	1	1	3	72	7	434	
Novel Flu	Novel influenza (pandemic A/H1N1 2009)						—	

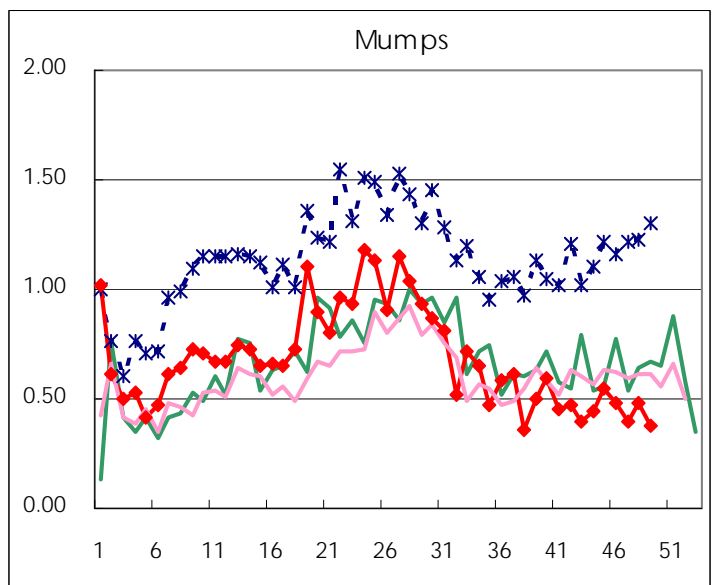
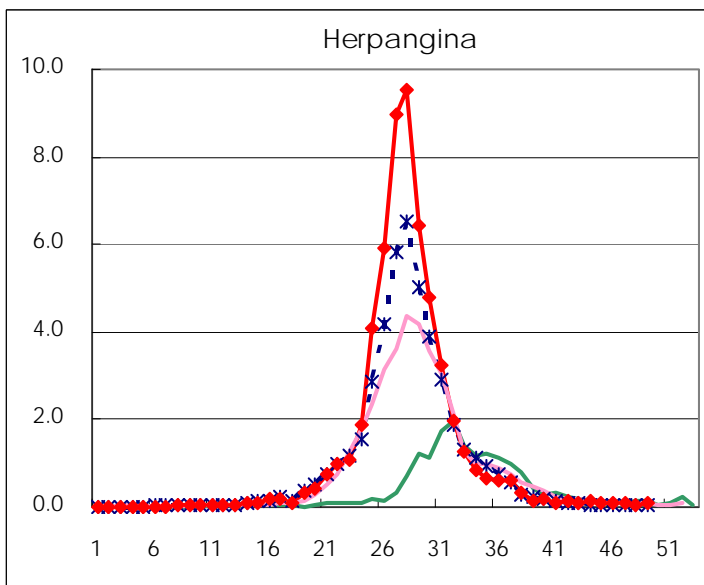
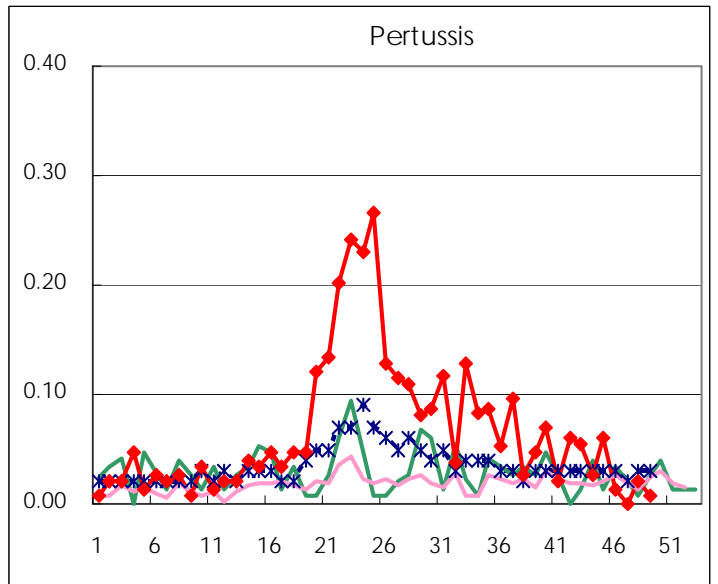
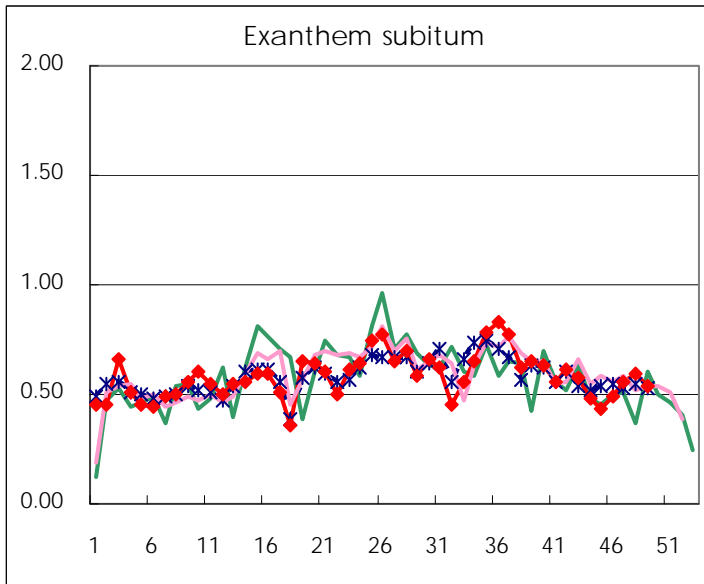
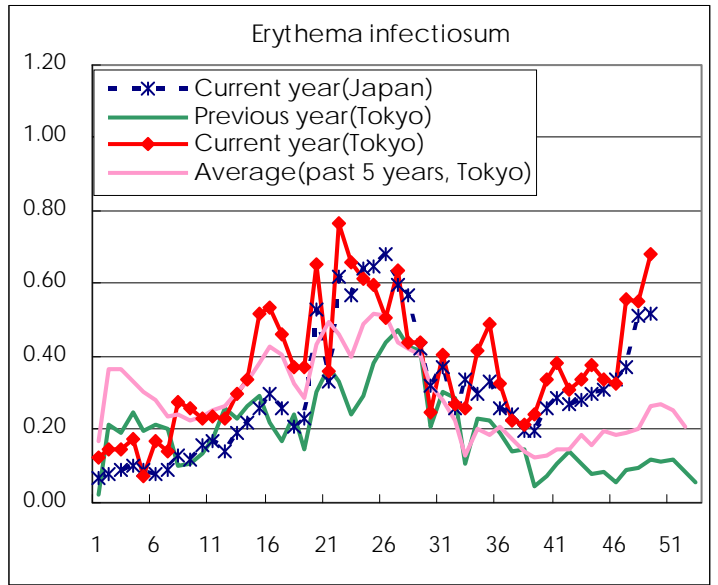
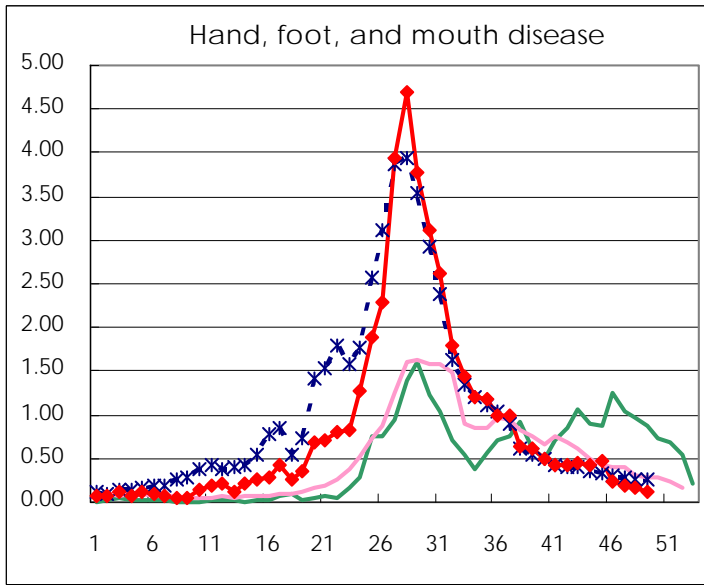
Number of patients with the diseases to be reported
by the designated clinics and hospitals

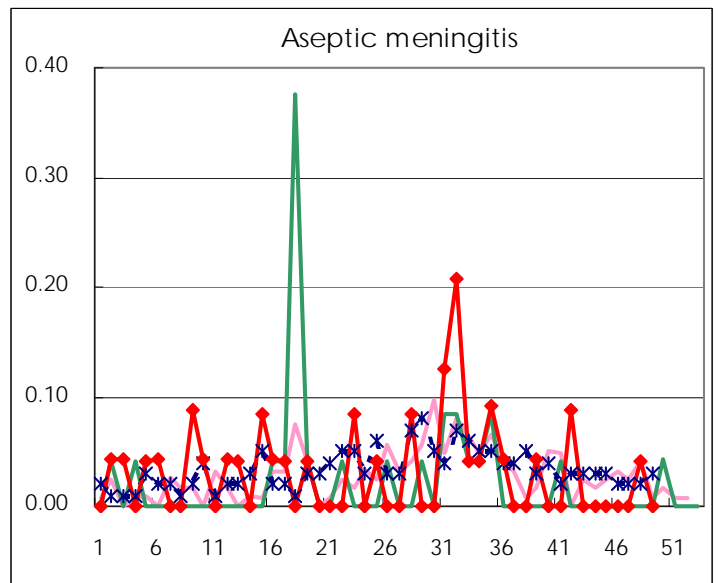
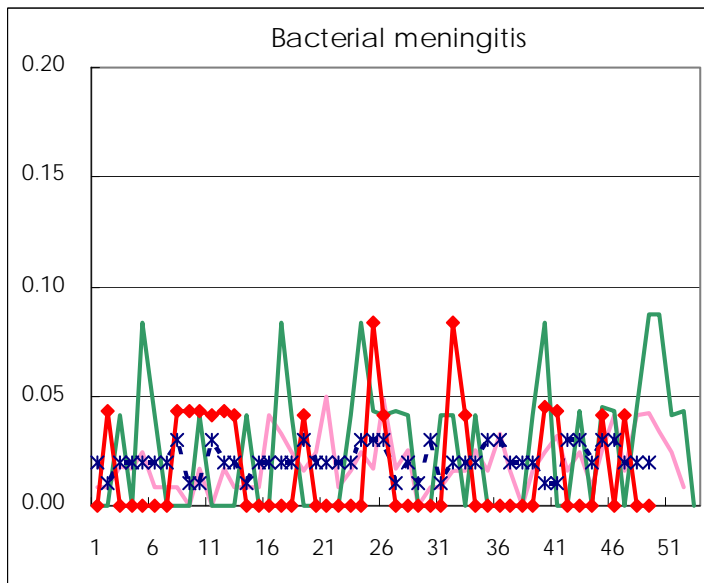
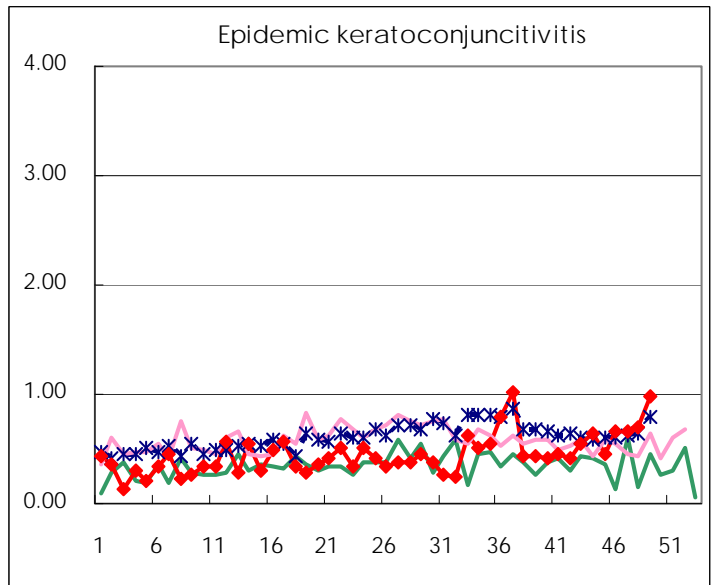
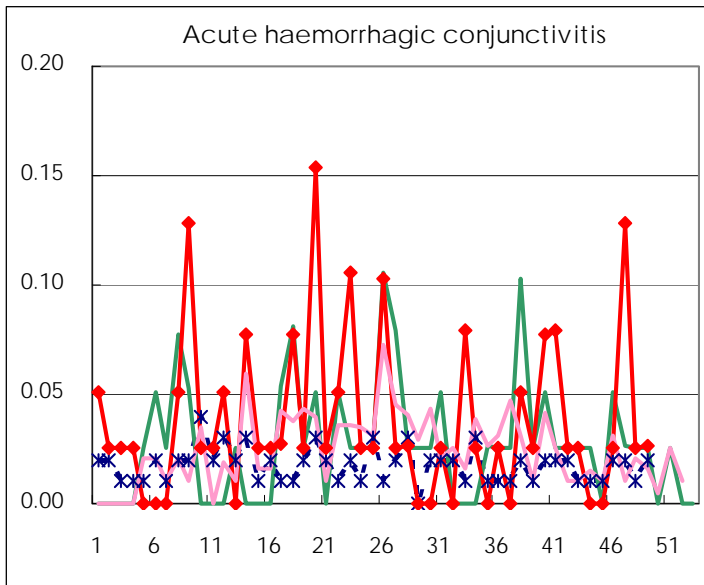
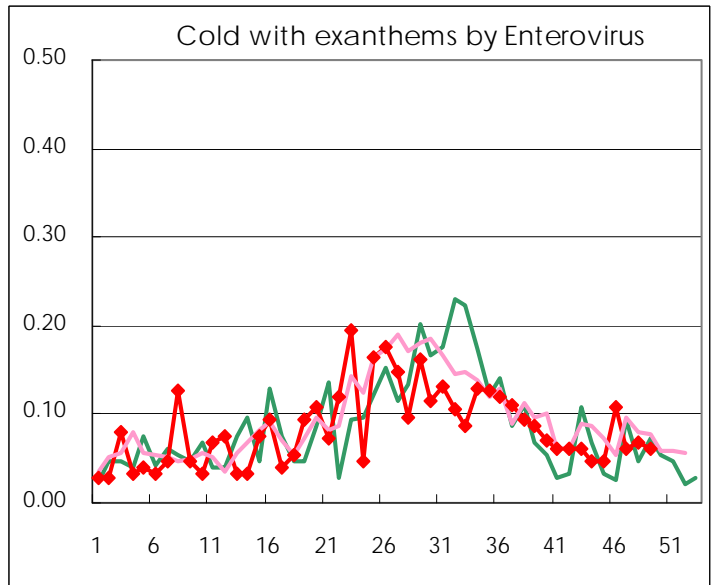
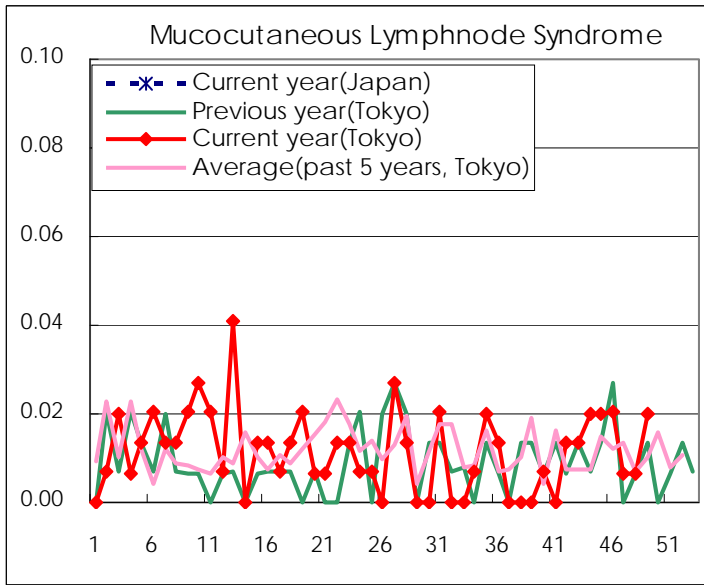
Diseases	2010				
	46th	47th	48th	49th	/sentinel
Respiratory syncytial virus infection	39	75	94	108	0.72
Pharyngoconjunctival fever	39	54	84	89	0.59
Group A streptococcal pharyngitis	294	275	352	385	2.57
Infectious gastroenteritis	1899	2,003	2,652	2,902	19.35
Chickenpox	141	199	236	251	1.67
Hand, foot, and mouth disease	34	27	25	19	0.13
Erythema infectiosum	48	84	82	102	0.68
Exanthem subitum	73	83	88	81	0.54
Pertussis	2		3	1	0.01
Herpangina	11	11	6	15	0.10
Mumps	71	59	71	56	0.37
Cold with exanthems by Enterovirus	16	9	10	9	0.06
Mucocutaneous Lymphnode Syndrome	3	1	1	3	0.02
Influenza	143	172	219	301	1.04
Acute hemorrhagic conjunctivitis	1	5	1	1	0.03
Epidemic keratoconjunctivitis	26	26	27	37	0.97
Bacterial meningitis		1			
Aseptic meningitis			1		
Mycoplasma pneumonia	20	17	16	14	0.61
Chlamydial pneumonia (excluding psittacosis)	1	2	1	1	0.04

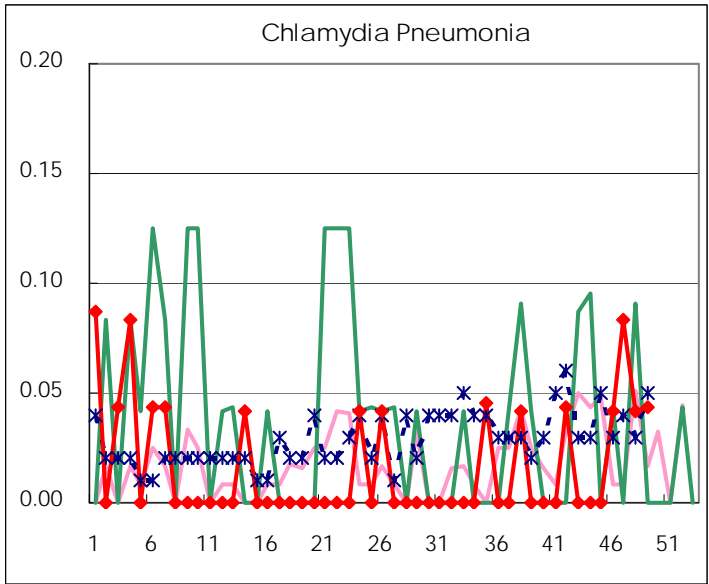
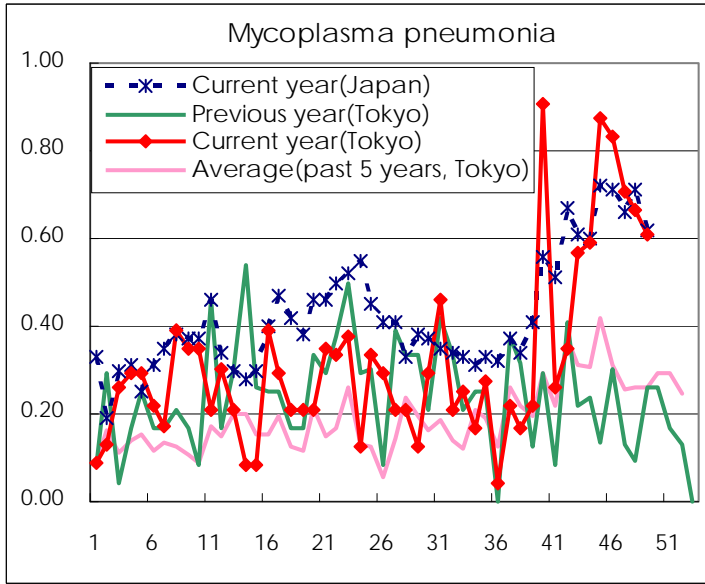
(Blank means 0.)

Disease Trend Graph (weekly reported cases per sentinel in comparison)









Number of sentinel facilities for weekly reporting		
Types of sentinels	Number of sentinels	Sentinels having reported
Pediatric	150	150
Influenza	290	289
Ophthalmic	39	38
Specially-designated	25	23

Tokyo Metropolitan Government
Infectious Disease Surveillance Center