
INFECTIOUS DISEASES WEEKLY REPORT

TOKYO IDWR

Tokyo Metropolitan Infectious Disease Surveillance Center

20 January 2011 / Number 2

Surveillance System in Tokyo, Japan

The infectious diseases which all physicians must report

All physicians must report to health centers the incidence of the diseases which are shown at page one. Health centers electronically report the individual cases to Tokyo Metropolitan Infectious Disease Surveillance Center.

The infectious diseases required to be reported by the sentinels

The numbers of patients who visit the sentinel clinics or hospitals during a week are reported to health centers in Tokyo. And they electronically report the numbers to Tokyo Metropolitan Infectious Disease Surveillance Center. We have about 400 sentinel clinics and hospitals in Tokyo.

1st Week is early January and 52nd Week is end of December.

Tokyo Metropolitan Institute of Public Health
Epidemiological Information Office

TEL:81-3-3363-3213 FAX:81-3-5332-7365

e-mail:idsc@tokyo-eiken.go.jp

URL:idsc.tokyo-eiken.go.jp/

Number of patients with the diseases which all physicians must report

Category	Diseases	Tokyo				Japan		
		51st	52nd	1st	2nd	Cum 2011	2nd	Cum 2011
I	Ebola hemorrhagic fever							
	Crimean-Congo hemorrhagic fever							
	Smallpox							
	South American hemorrhagic fever							
	Plague							
	Marburg disease							
	Lassa fever							
II	Acute poliomyelitis							
	Tuberculosis	86	45	69	44	113	222	561
	Diphtheria							
	Severe Acute Respiratory Syndrome(SARS)							
	Avian influenza H5N1							
III	Cholera							
	Shigellosis		1		2	2	3	5
	Enterohemorrhagic Escherichia coli infection	1	1	1		1	16	29
	Typhoid fever							
	Paratyphoid fever			1	1	2		2
IV	Hepatitis E	1						
	West Nile fever							
	Hepatitis A						2	4
	Echinococcosis							1
	Yellow fever							
	Psittacosis							
	Omsk hemorrhagic fever							
	Relapsing fever							
	Kyasanur forest disease							
	Q fever							
	Rabies							
	Coccidioidomycosis			1		1		1
	Monkeypox							
	Hemorrhagic fever with renal syndrome							
	Western equine encephalitis							
	Tick-borne encephalitis							
	Anthrax							
	Scrub typhus(Tsutsugamushi disease)		1	1	1	2	7	19
	Dengue fever		2	2		2	3	4
	Eastern equine encephalitis							
	Avian influenza (excluding H5N1)							
	Nipah virus infection							
	Japanese spotted fever							
	Japanese encephalitis							
	Epidemic typhus							
	Hantavirus pulmonary syndrome							
	Herpes B virus infection							
	Glanders							
	Brucellosis							
	Venezuelan equine encephalitis							
	Hendra virus infection							
Botulism						1	1	
Malaria			1		1		1	
Tularemia								
Lyme disease								
Lyssavirus infection(excluding rabies)								
Rift valley fever								
Melioidosis								
Legionellosis	1		1	1	2	7	19	
Leptospirosis								
Rocky mountain spotted fever								

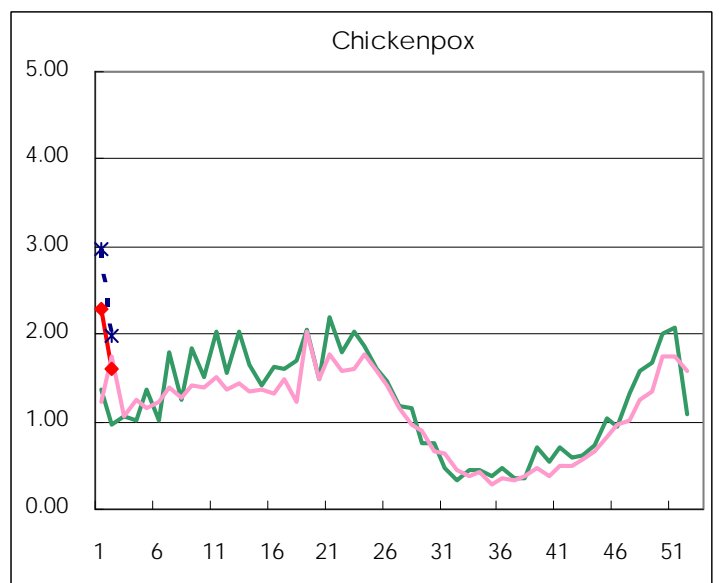
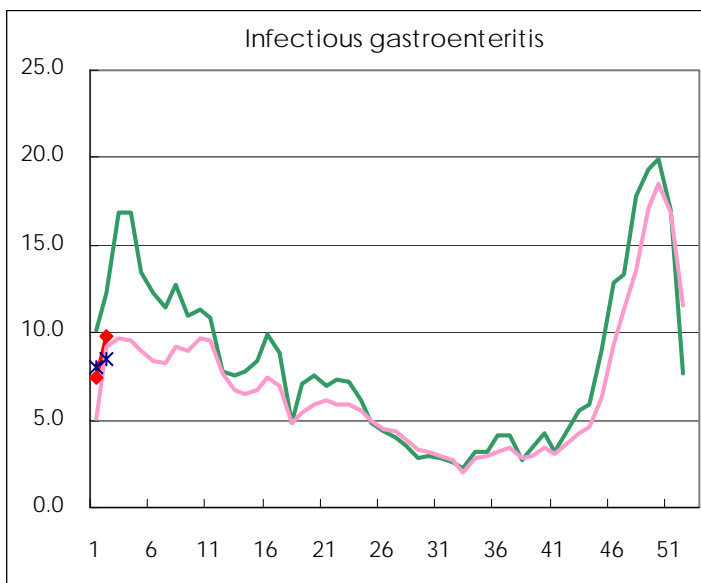
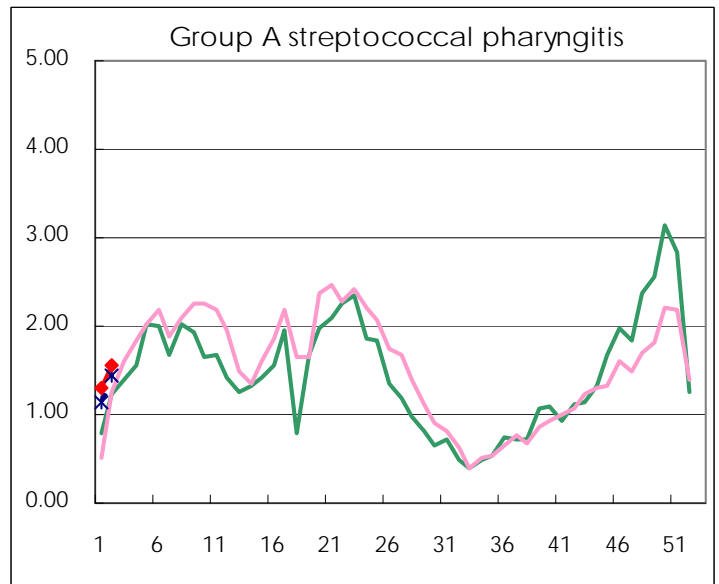
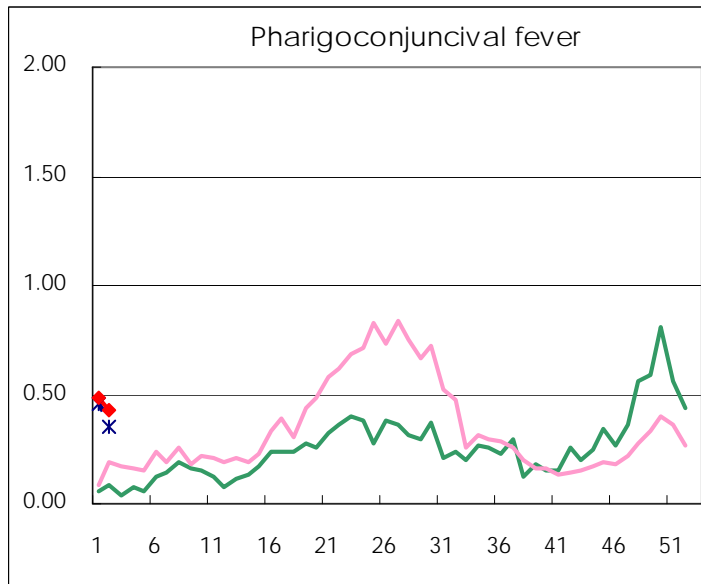
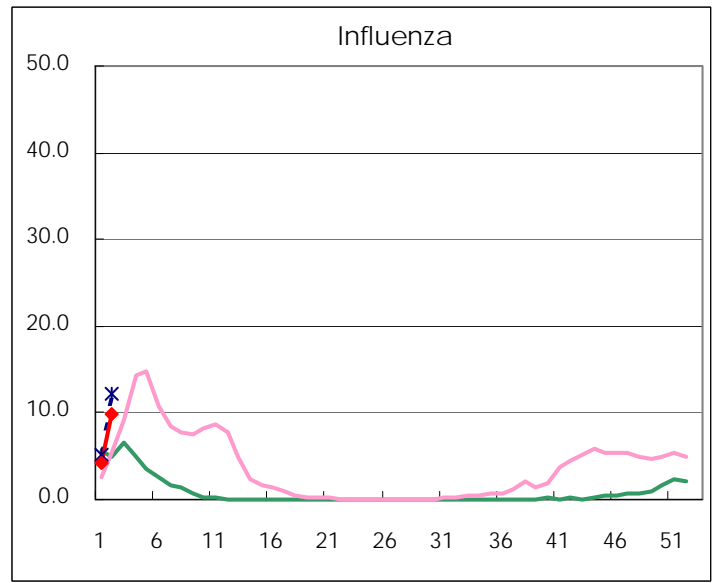
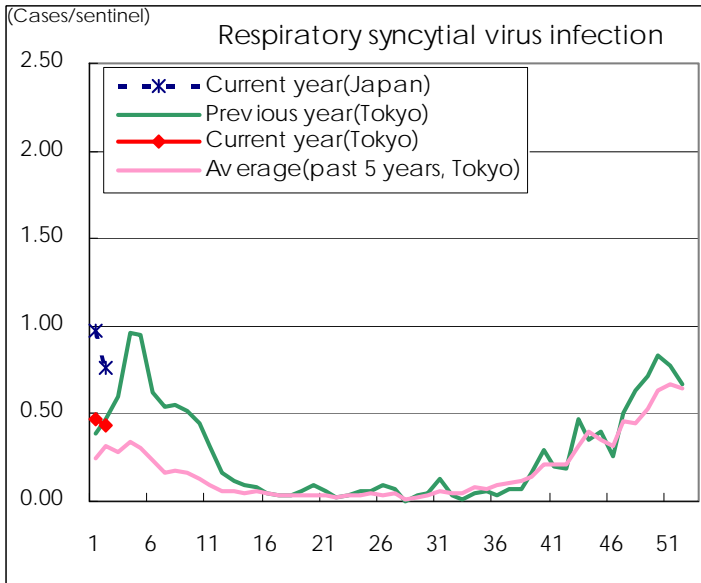
Category	Diseases	Tokyo				Japan		
		51st	52nd	1st	2nd	Cum 2011	2nd	Cum 2011
V	Amebiasis	4	7	2	3	5	6	17
	Viral hepatitis(excluding hepatitis A and E)	1		1		1	3	6
	Acute encephalitis(excluding JE and WNE)				2	2	6	11
	Cryptosporidiosis							1
	Creutzfeldt-Jakob disease						1	1
	Severe invasive streptococcal infections(TSLS)	1		1	1	2	3	5
	Acquired immunodeficiency syndrome (AIDS)	17	10	9	6	15	10	25
	Giardiasis							2
	Meningococcal meningitis							
	Congenital rubella syndrome							
	Syphilis	3	1	1	6	7	7	15
	Tetanus							2
	Vancomycin-resistant S. aureus infection							
	Vancomycin-resistant Enterococcus infection						1	1
	Rubella	1						1
Measles	3		2		2	1	7	
Novel Flu	Novel influenza (pandemic A/H1N1 2009)						—	

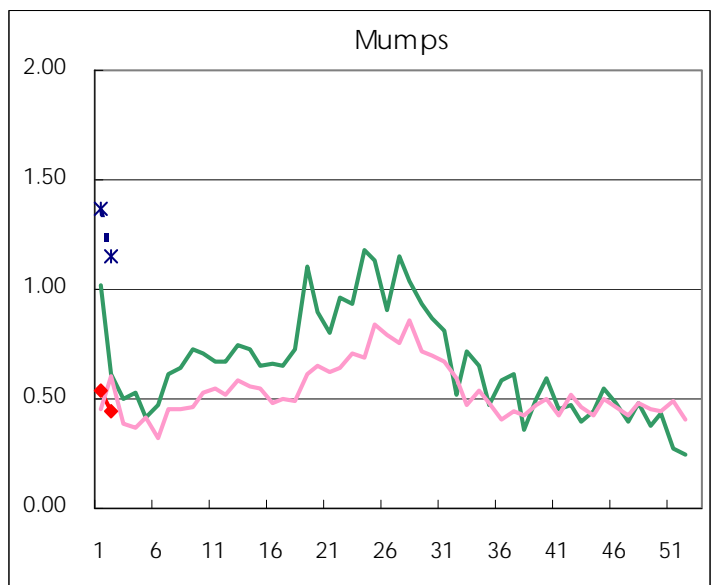
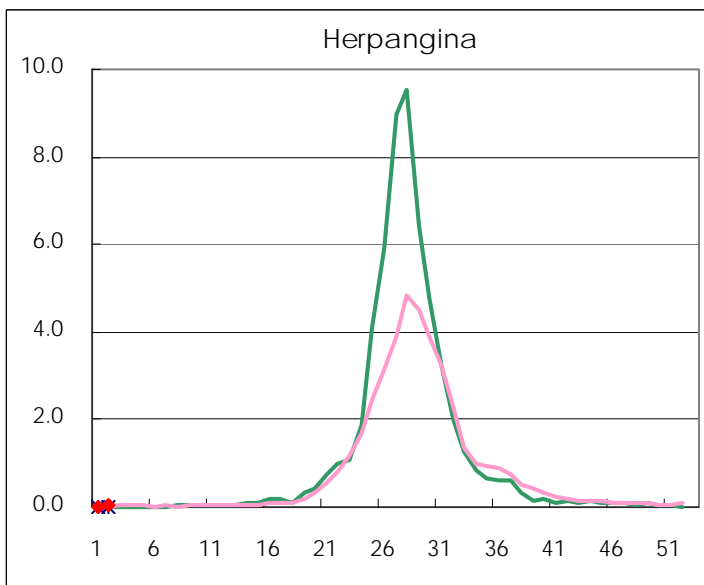
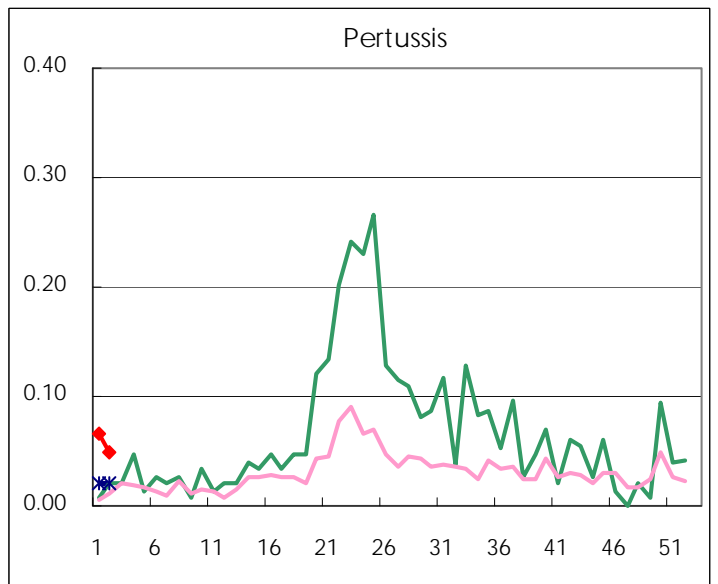
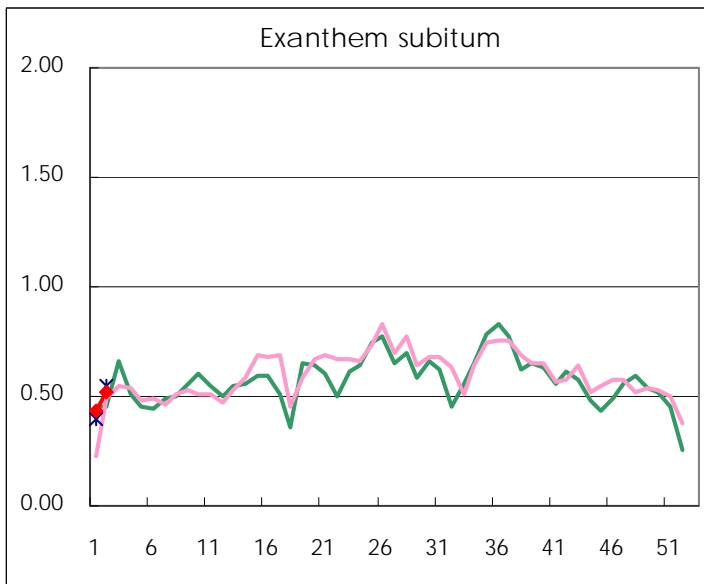
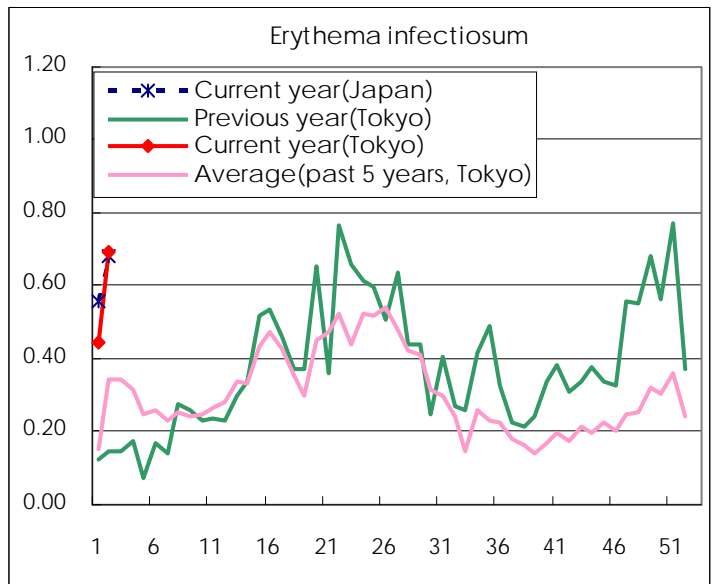
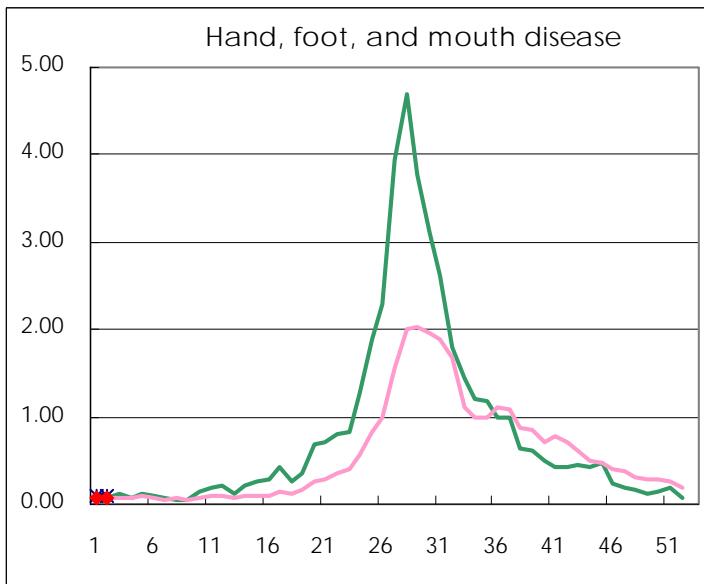
Number of patients with the diseases to be reported
by the designated clinics and hospitals

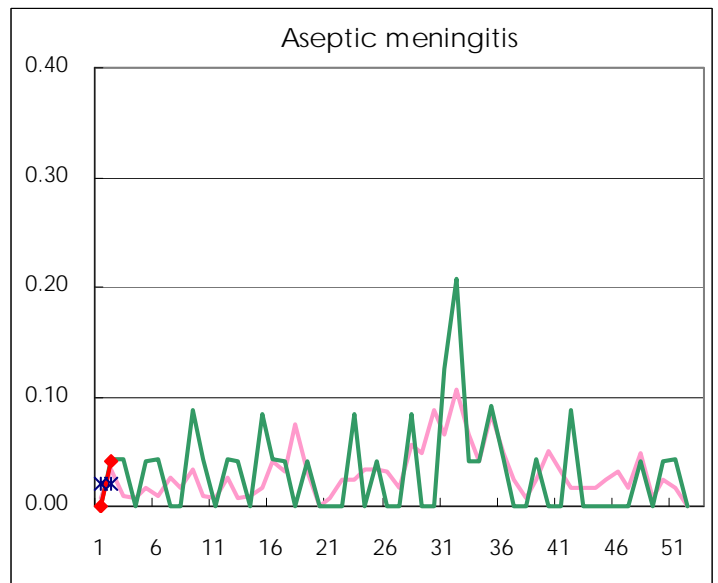
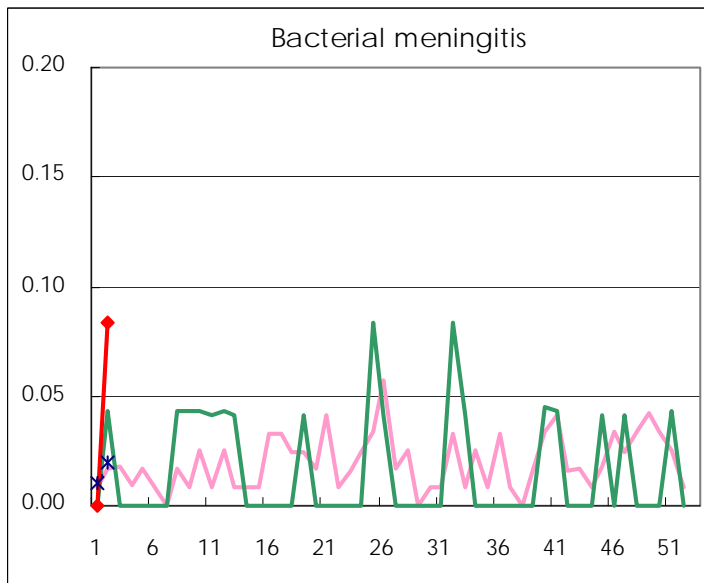
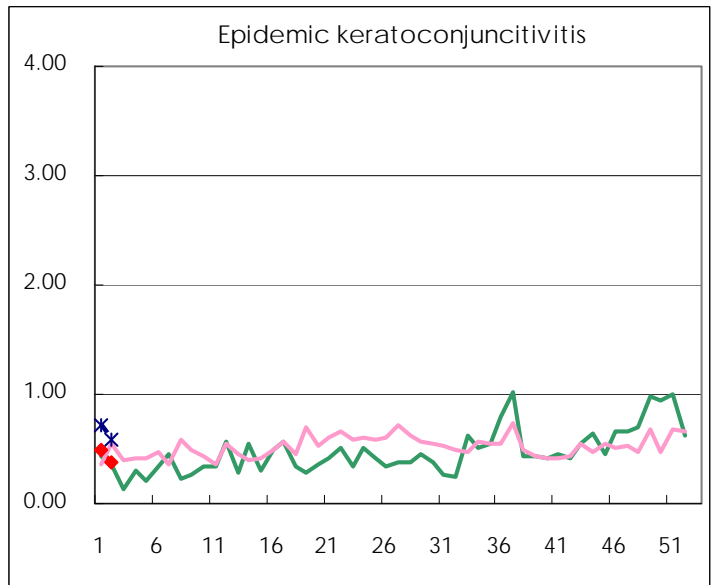
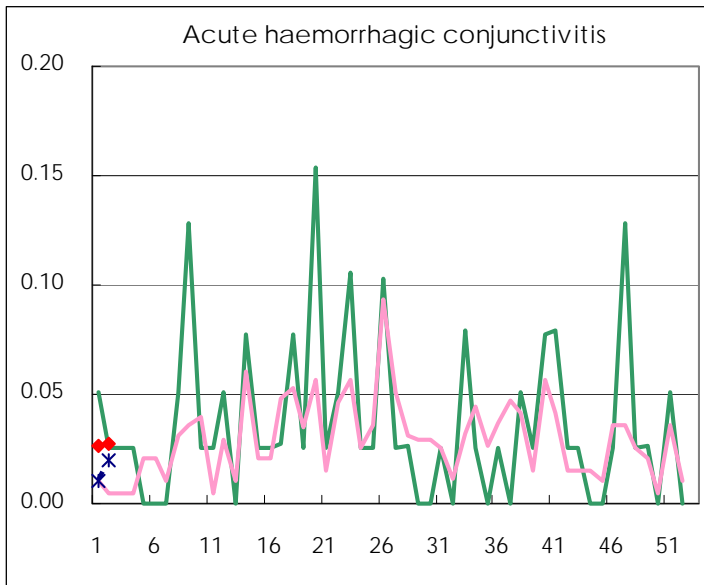
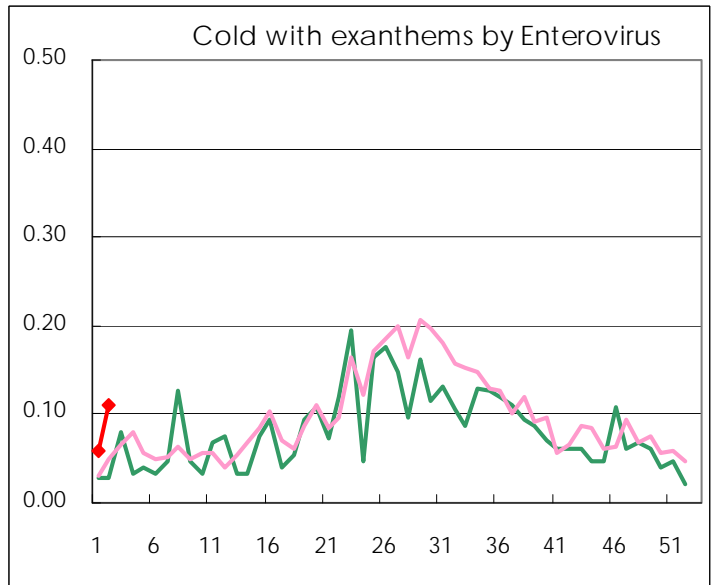
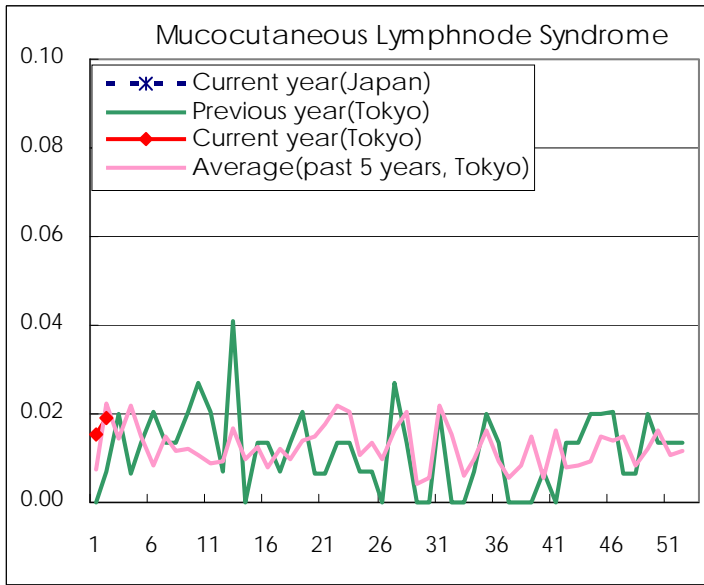
Diseases	2010 - 2011				
	51st	52nd	1st	2nd	/sentinel
Respiratory syncytial virus infection	115	98	123	115	0.44
Pharyngoconjunctival fever	83	65	127	112	0.42
Group A streptococcal pharyngitis	419	186	340	409	1.55
Infectious gastroenteritis	2518	1,124	1,946	2,592	9.82
Chickenpox	308	160	594	422	1.60
Hand, foot, and mouth disease	29	12	17	19	0.07
Erythema infectiosum	114	55	116	183	0.69
Exanthem subitum	67	37	113	137	0.52
Pertussis	6	6	17	13	0.05
Herpangina	4	3	4	7	0.03
Mumps	41	36	140	117	0.44
Cold with exanthems by Enterovirus	7	3	15	29	0.11
Mucocutaneous Lymphnode Syndrome	2	2	4	5	0.02
Influenza	665	576	1,770	4,141	9.88
Acute hemorrhagic conjunctivitis	2		1	1	0.03
Epidemic keratoconjunctivitis	39	23	19	14	0.38
Bacterial meningitis	1			2	0.08
Aseptic meningitis	1			1	0.04
Mycoplasma pneumonia	22	7	11	5	0.21
Chlamydial pneumonia (excluding psittacosis)		1	1	1	0.04

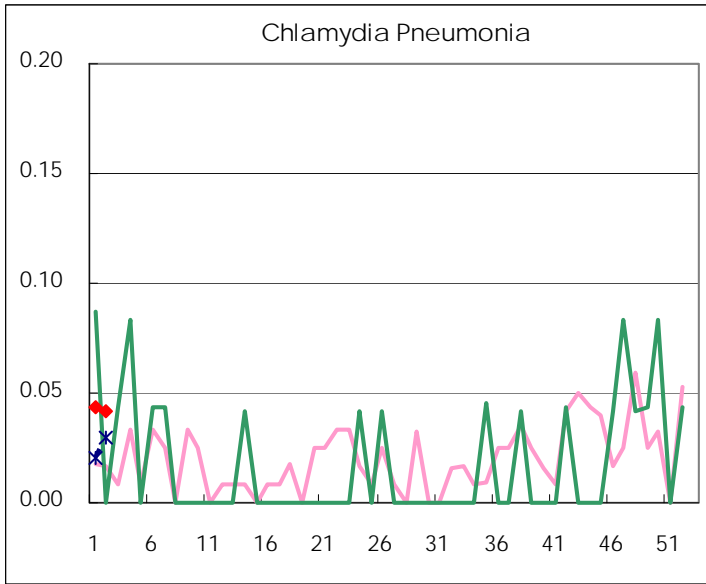
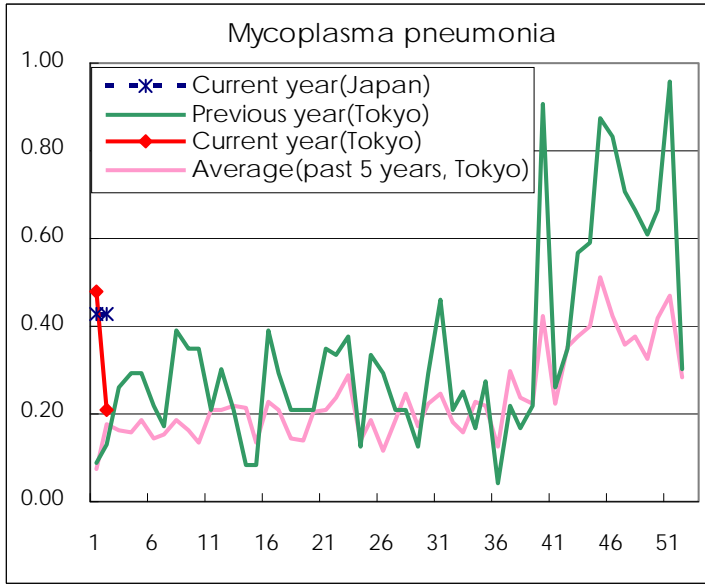
(Blank means 0.)

Disease Trend Graph (weekly reported cases per sentinel in comparison)









Number of sentinel facilities for weekly reporting		
Types of sentinels	Number of sentinels	Sentinels having reported
Pediatric	264	264
Influenza	419	419
Ophthalmic	39	37
Specially-designated	25	24

Tokyo Metropolitan Government
Infectious Disease Surveillance Center