

---

INFECTIOUS DISEASES WEEKLY REPORT

# TOKYO IDWR

Tokyo Metropolitan Infectious Disease Surveillance Center

---

## 24 February 2011 / Number 7

### Surveillance System in Tokyo, Japan

The infectious diseases which all physicians must report

All physicians must report to health centers the incidence of the diseases which are shown at page one. Health centers electronically report the individual cases to Tokyo Metropolitan Infectious Disease Surveillance Center.

The infectious diseases required to be reported by the sentinels

The numbers of patients who visit the sentinel clinics or hospitals during a week are reported to health centers in Tokyo. And they electronically report the numbers to Tokyo Metropolitan Infectious Disease Surveillance Center. We have about 400 sentinel clinics and hospitals in Tokyo.

1st Week is early January and 52nd Week is end of December.

Tokyo Metropolitan Institute of Public Health  
Epidemiological Information Office

TEL:81-3-3363-3213 FAX:81-3-5332-7365

e-mail:[idsc@tokyo-eiken.go.jp](mailto:idsc@tokyo-eiken.go.jp)

URL:[idsc.tokyo-eiken.go.jp/](http://idsc.tokyo-eiken.go.jp/)

---

## Number of patients with the diseases which all physicians must report

Category	Diseases	Tokyo				Japan		
		4th	5th	6th	7th	Cum 2011	7th	Cum 2011
I	Ebola hemorrhagic fever							
	Crimean-Congo hemorrhagic fever							
	Smallpox							
	South American hemorrhagic fever							
	Plague							
	Marburg disease							
	Lassa fever							
II	Acute poliomyelitis							
	Tuberculosis	87	109	50	71	553	314	2,902
	Diphtheria							
	Severe Acute Respiratory Syndrome(SARS)							
	Avian influenza H5N1							
III	Cholera							
	Shigellosis		2			5	3	18
	Enterohemorrhagic Escherichia coli infection	3	1		1	7	10	96
	Typhoid fever						1	1
	Paratyphoid fever	1				3		4
IV	Hepatitis E	1		2		3		7
	West Nile fever							
	Hepatitis A	2	1		3	6	6	71
	Echinococcosis					1		3
	Yellow fever							
	Psittacosis							1
	Omsk hemorrhagic fever							
	Relapsing fever							
	Kyasanur forest disease							
	Q fever							
	Rabies							
	Coccidioidomycosis			1		2		2
	Monkeypox							
	Hemorrhagic fever with renal syndrome							
	Western equine encephalitis							
	Tick-borne encephalitis							
	Anthrax							
	Chikungunya fever							3
	Scrub typhus(Tsutsugamushi disease)			1	1	5	2	32
	Dengue fever	1			1	5	2	16
	Eastern equine encephalitis							
	Avian influenza (excluding H5N1)							
	Nipah virus infection							
	Japanese spotted fever							
	Japanese encephalitis							
	Epidemic typhus							
	Hantavirus pulmonary syndrome							
	Herpes B virus infection							
	Glanders							
	Brucellosis							
	Venezuelan equine encephalitis							
	Hendra virus infection							
Botulism							2	
Malaria					1		4	
Tularemia								
Lyme disease								
Lyssavirus infection(excluding rabies)								
Rift valley fever								
Melioidosis								
Legionellosis	1	1		1	5	7	75	
Leptospirosis	1				1		1	
Rocky mountain spotted fever								

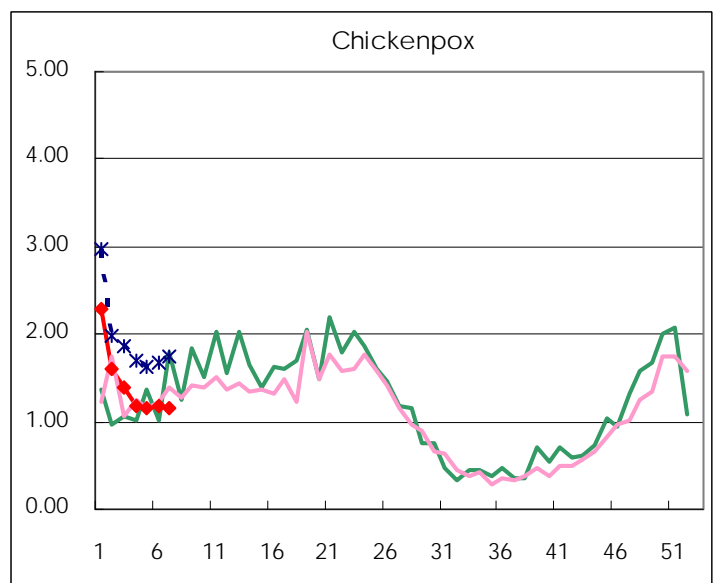
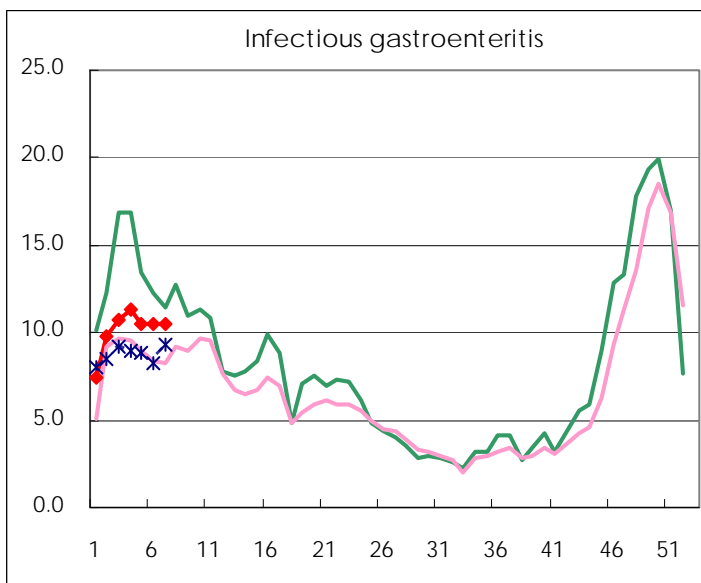
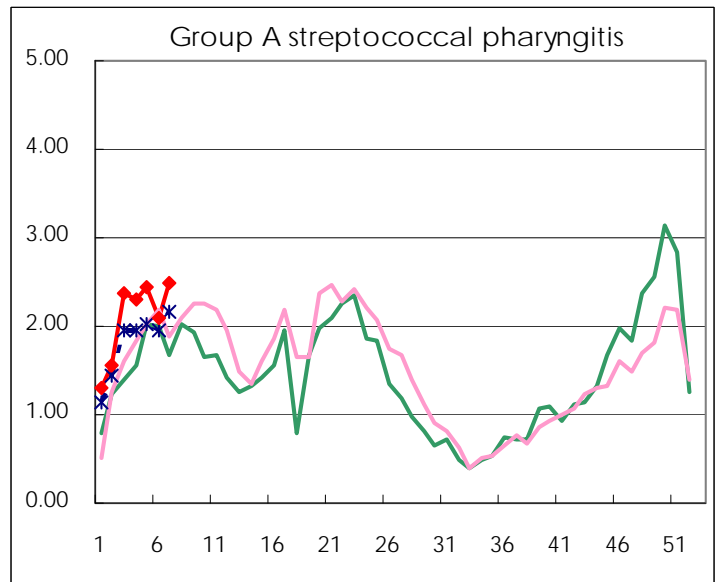
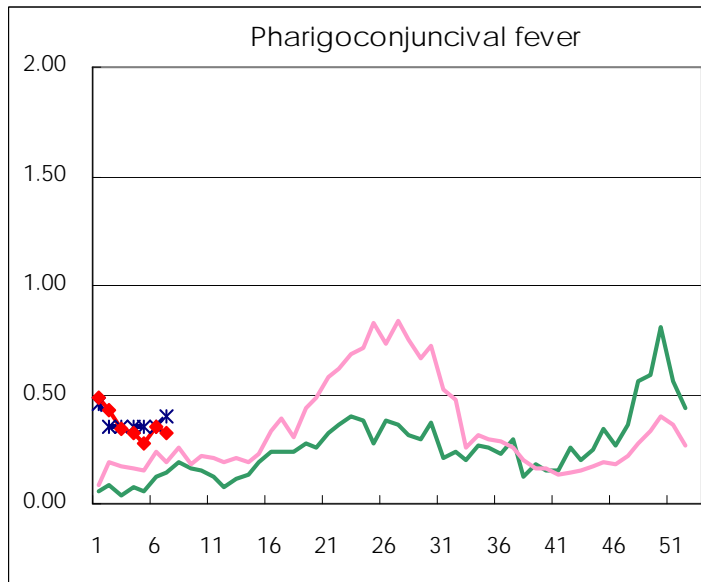
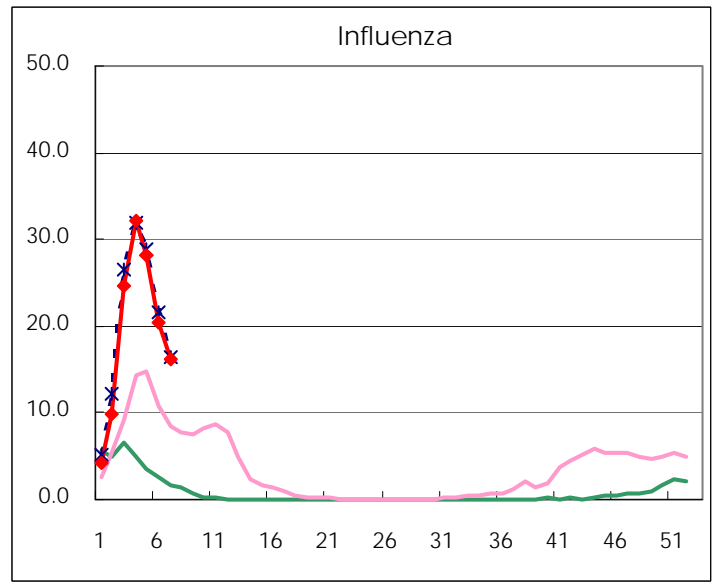
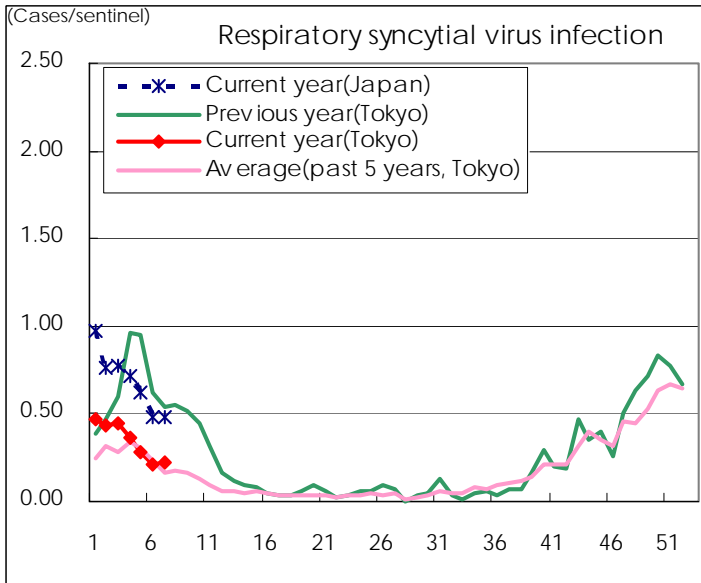
Category	Diseases	Tokyo				Japan		
		4th	5th	6th	7th	Cum 2011	7th	Cum 2011
V	Amebiasis	1	2	3	2	18	10	98
	Viral hepatitis(excluding hepatitis A and E)	2		1		5	1	32
	Acute encephalitis(excluding JE and WNE)	2		1	1	6	1	55
	Cryptosporidiosis				1	1		2
	Creutzfeldt-Jakob disease			1	1	3		10
	Severe invasive streptococcal infections(TSLS)	2	1			6	4	32
	Acquired immunodeficiency syndrome (AIDS)	13	3	11	6	58	15	169
	Giardiasis		2			2	1	10
	Meningococcal meningitis							
	Congenital rubella syndrome							
	Syphilis	3	1		6	22	10	78
	Tetanus							3
	Vancomycin-resistant S. aureus infection							
	Vancomycin-resistant Enterococcus infection							4
	Rubella						1	11
Measles	3	1	4	1	15	5	59	
Novel Flu	Novel influenza (pandemic A/H1N1 2009)						—	

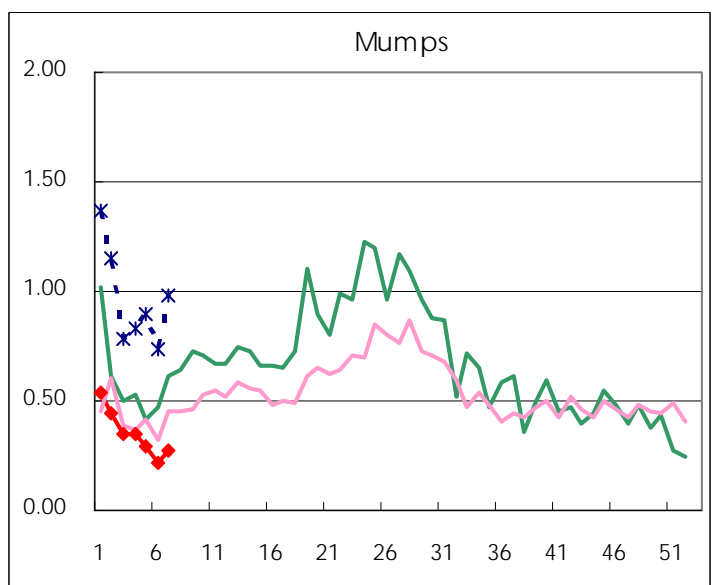
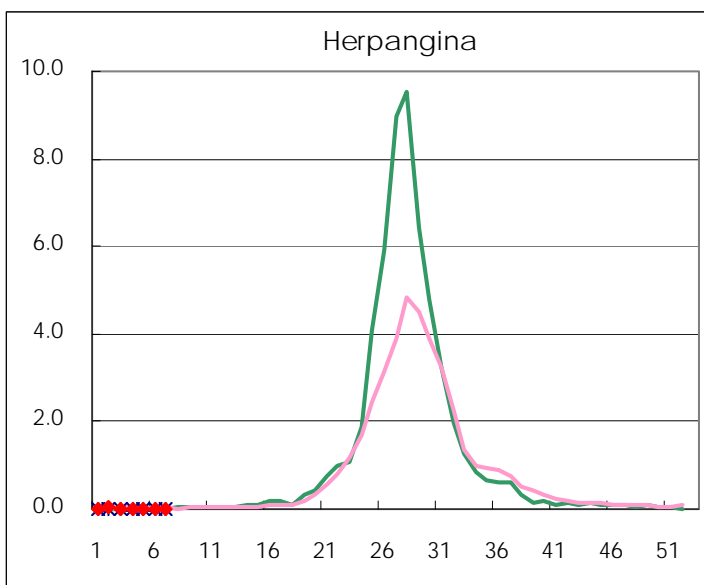
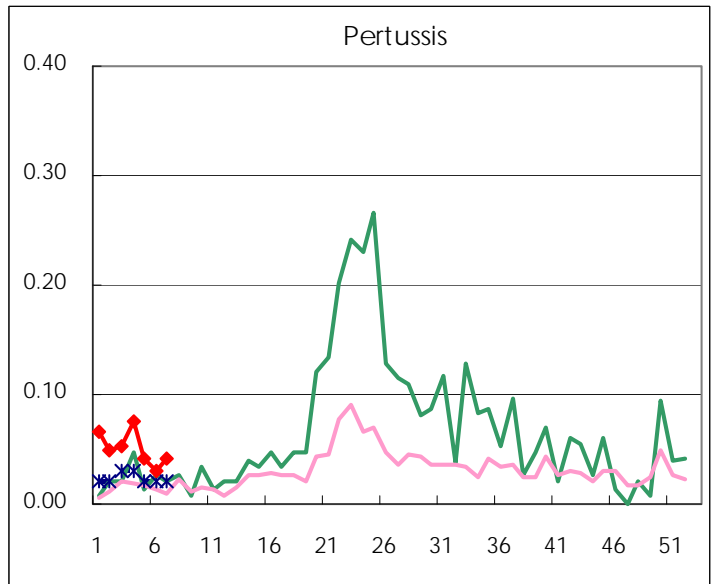
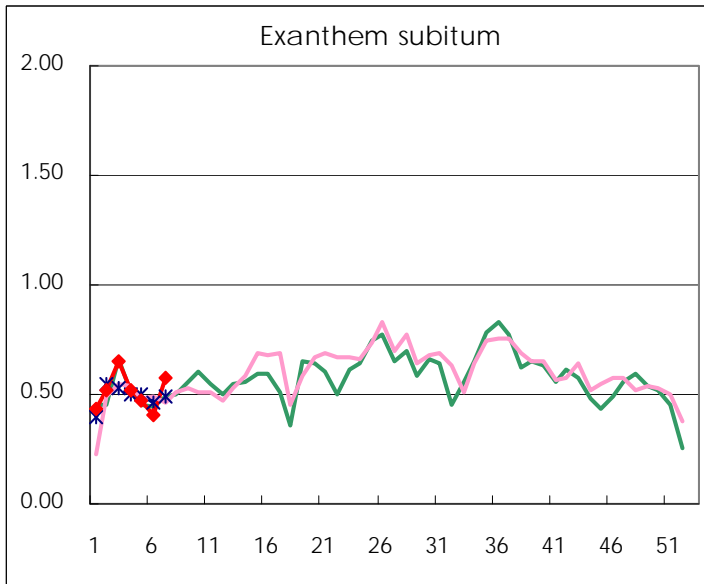
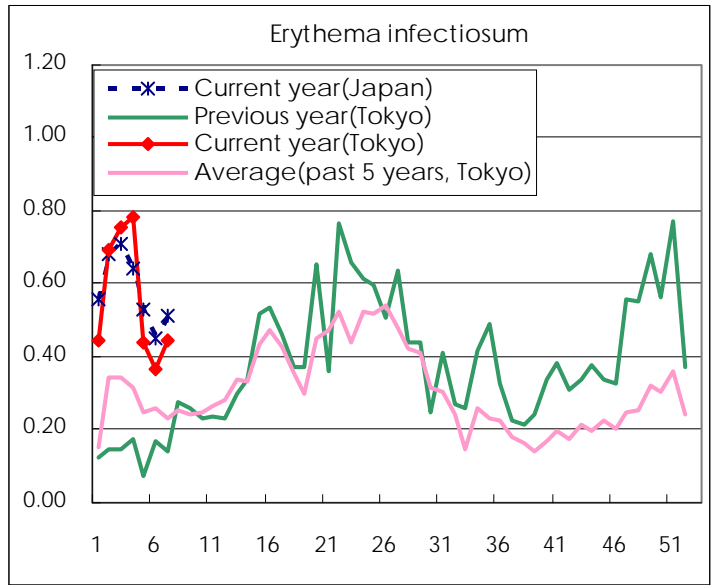
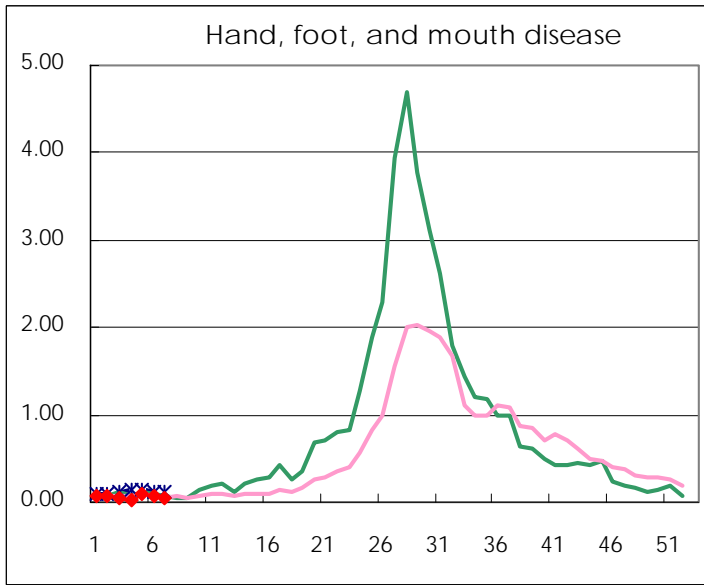
Number of patients with the diseases to be reported  
by the designated clinics and hospitals

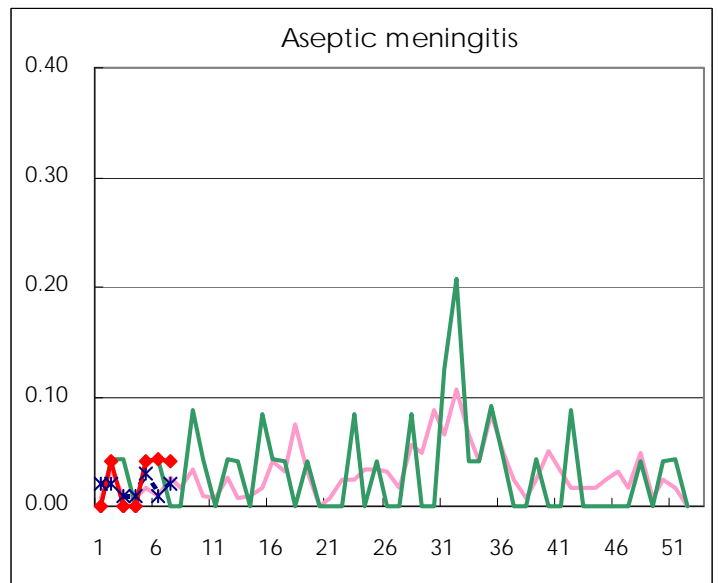
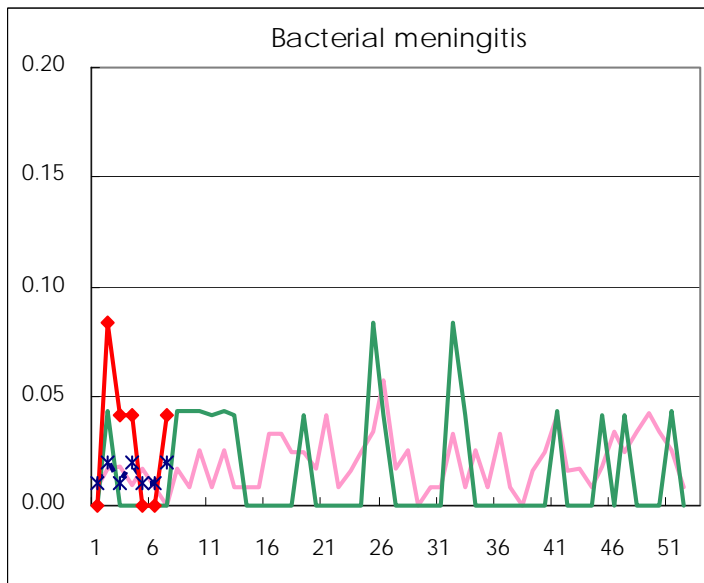
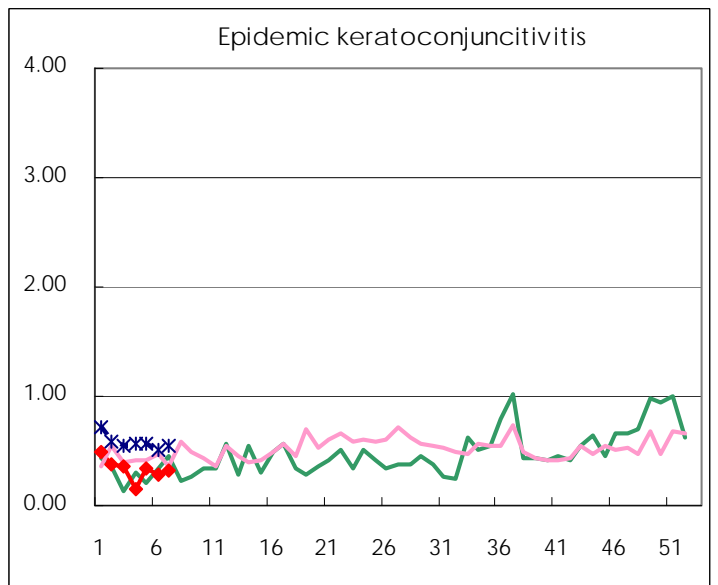
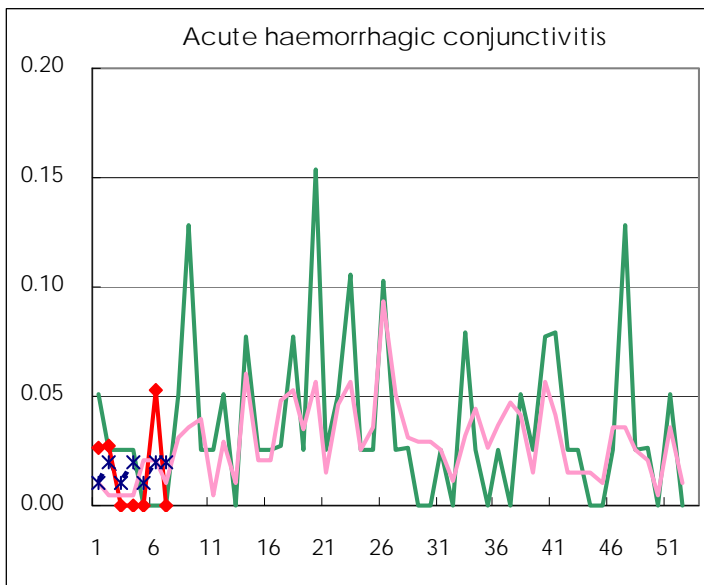
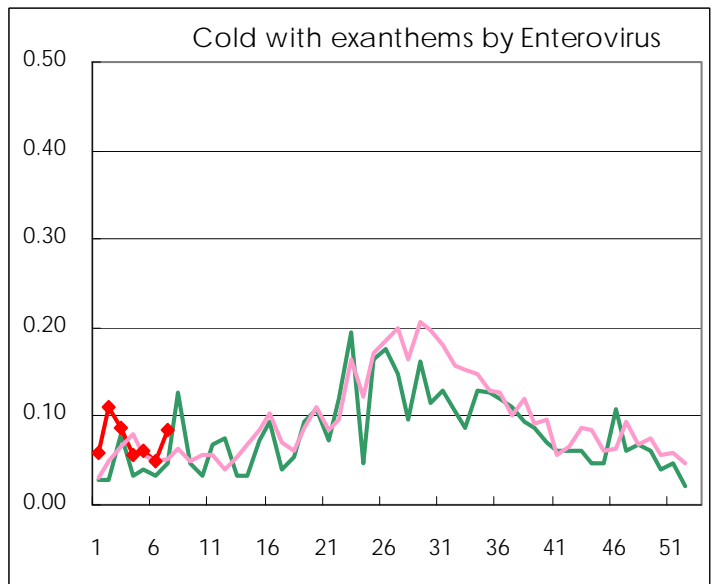
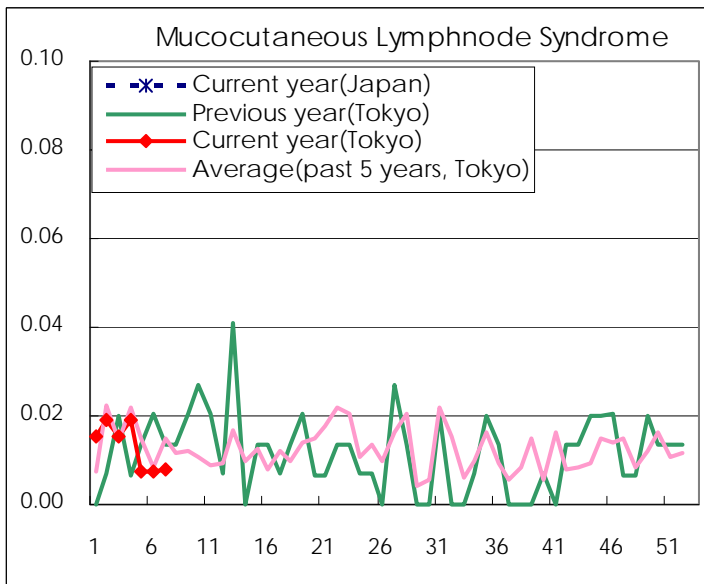
Diseases	2010 - 2011				
	4th	5th	6th	7th	/sentinel
Respiratory syncytial virus infection	96	75	55	57	0.22
Pharyngoconjunctival fever	84	73	93	85	0.33
Group A streptococcal pharyngitis	602	642	550	650	2.50
Infectious gastroenteritis	2953	2,747	2,751	2,735	10.52
Chickenpox	307	305	311	301	1.16
Hand, foot, and mouth disease	8	24	16	15	0.06
Erythema infectiosum	205	115	96	116	0.45
Exanthem subitum	137	125	107	150	0.58
Pertussis	20	11	8	11	0.04
Herpangina	5	2	2	1	0.00
Mumps	91	76	57	72	0.28
Cold with exanthems by Enterovirus	15	16	13	22	0.08
Mucocutaneous Lymphnode Syndrome	5	2	2	2	0.01
Influenza	13,378	11,773	8,510	6,758	16.28
Acute hemorrhagic conjunctivitis			2		
Epidemic keratoconjunctivitis	6	13	11	12	0.32
Bacterial meningitis	1			1	0.04
Aseptic meningitis		1	1	1	0.04
Mycoplasma pneumonia	11	14	14	14	0.58
Chlamydial pneumonia (excluding psittacosis)		1		1	0.04

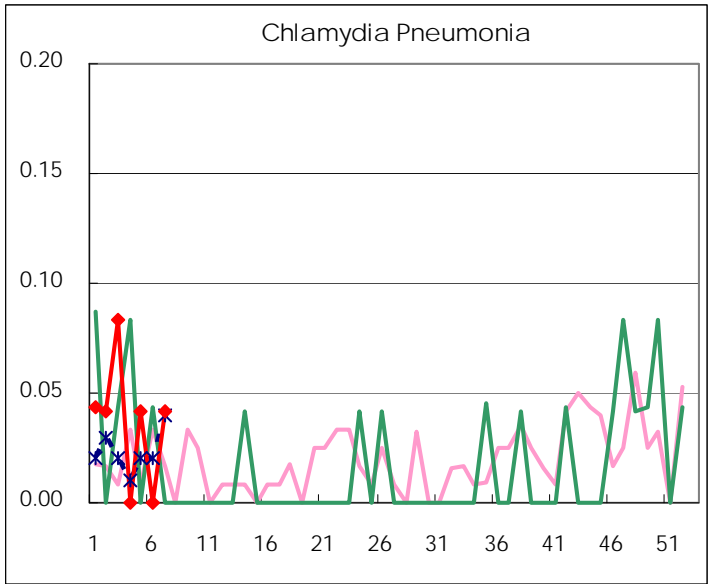
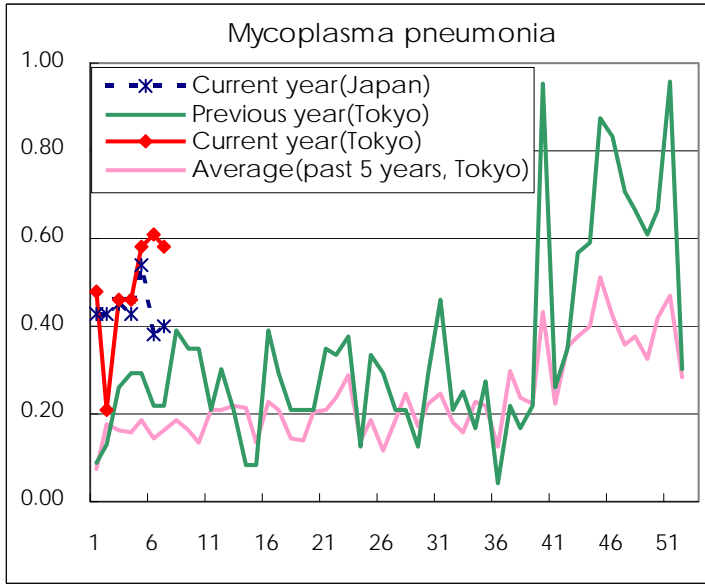
( Blank means 0. )

# Disease Trend Graph (weekly reported cases per sentinel in comparison)









Number of sentinel facilities for weekly reporting		
Types of sentinels	Number of sentinels	Sentinels having reported
Pediatric	264	260
Influenza	419	415
Ophthalmic	39	37
Specially-designated	25	24

**Tokyo Metropolitan Government**  
**Infectious Disease Surveillance Center**