

---

INFECTIOUS DISEASES WEEKLY REPORT

# TOKYO IDWR

Tokyo Metropolitan Infectious Disease Surveillance Center

## 3 March 2011 / Number 8

### Surveillance System in Tokyo, Japan

#### The infectious diseases which all physicians must report

All physicians must report to health centers the incidence of the diseases which are shown at page one. Health centers electronically report the individual cases to Tokyo Metropolitan Infectious Disease Surveillance Center.

#### The infectious diseases required to be reported by the sentinels

The numbers of patients who visit the sentinel clinics or hospitals during a week are reported to health centers in Tokyo. And they electronically report the numbers to Tokyo Metropolitan Infectious Disease Surveillance Center. We have about 400 sentinel clinics and hospitals in Tokyo.

1st Week is early January and 52nd Week is end of December.

Tokyo Metropolitan Institute of Public Health  
Epidemiological Information Office

TEL:81-3-3363-3213 FAX:81-3-5332-7365

e-mail:[idsc@tokyo-eiken.go.jp](mailto:idsc@tokyo-eiken.go.jp)

URL:[idsc.tokyo-eiken.go.jp/](http://idsc.tokyo-eiken.go.jp/)

---

## Number of patients with the diseases which all physicians must report

Category	Diseases	Tokyo				Japan		
		5th	6th	7th	8th	Cum 2011	8th	Cum 2011
I	Ebola hemorrhagic fever							
	Crimean-Congo hemorrhagic fever							
	Smallpox							
	South American hemorrhagic fever							
	Plague							
	Marburg disease							
	Lassa fever							
II	Acute poliomyelitis							
	Tuberculosis	109	50	76	60	618	352	3,452
	Diphtheria							
	Severe Acute Respiratory Syndrome(SARS)							
III	Avian influenza H5N1							
	Cholera							
	Shigellosis	2				5	12	30
	Enterohemorrhagic Escherichia coli infection	1		1	1	8	23	120
	Typhoid fever							1
IV	Paratyphoid fever				1	4		5
	Hepatitis E		2		1	4	1	10
	West Nile fever							
	Hepatitis A	1		3		6	1	74
	Echinococcosis					1	1	5
	Yellow fever							
	Psittacosis							1
	Omsk hemorrhagic fever							
	Relapsing fever							
	Kyasanur forest disease							
	Q fever							
	Rabies							
	Coccidioidomycosis		1			2		2
	Monkeypox							
	Hemorrhagic fever with renal syndrome							
	Western equine encephalitis							
	Tick-borne encephalitis							
	Anthrax							
	Chikungunya fever							3
	Scrub typhus(Tsutsugamushi disease)		1	1	1	6	1	34
	Dengue fever			1		5		17
	Eastern equine encephalitis							
	Avian influenza (excluding H5N1)							
	Nipah virus infection							
	Japanese spotted fever							
	Japanese encephalitis				1	1		
	Epidemic typhus							1
	Hantavirus pulmonary syndrome							
	Herpes B virus infection							
	Glanders							
	Brucellosis							
	Venezuelan equine encephalitis							
Hendra virus infection								
Botulism							2	
Malaria					1	2	6	
Tularemia								
Lyme disease								
Lyssavirus infection(excluding rabies)								
Rift valley fever								
Melioidosis								
Legionellosis	1		1	1	6	2	81	
Leptospirosis					1		1	
Rocky mountain spotted fever								

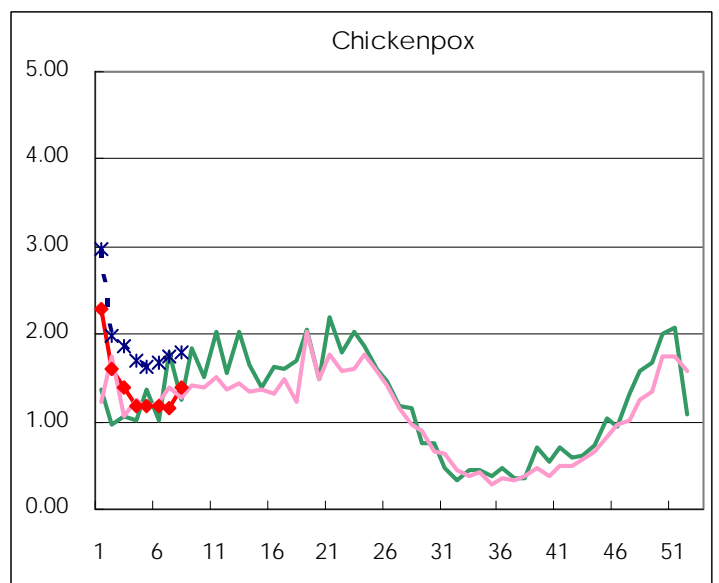
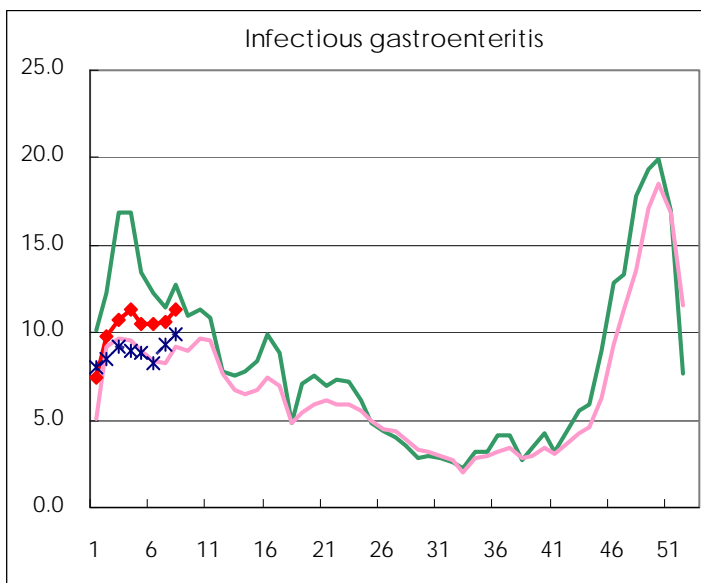
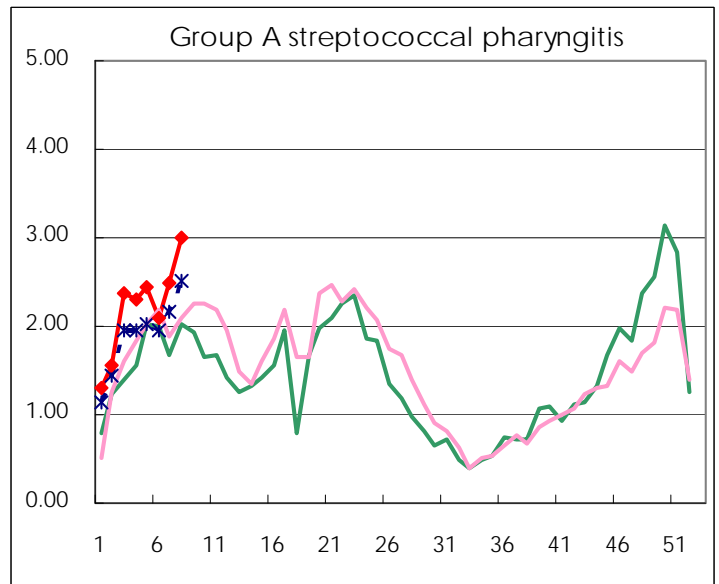
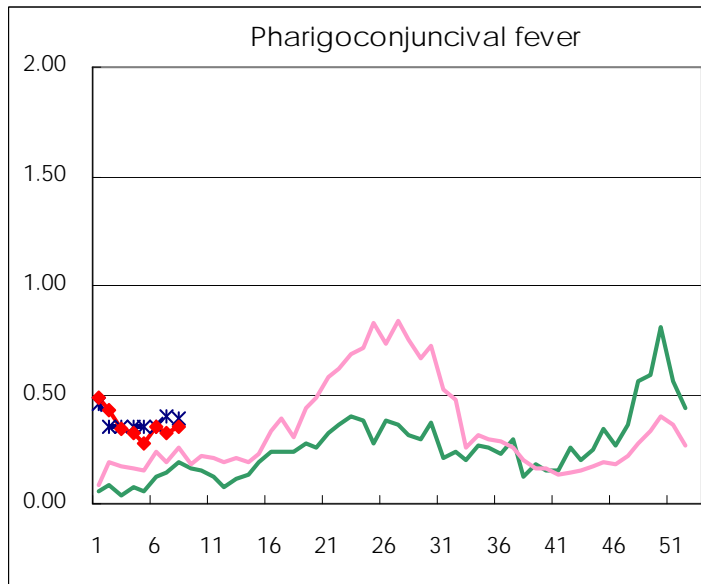
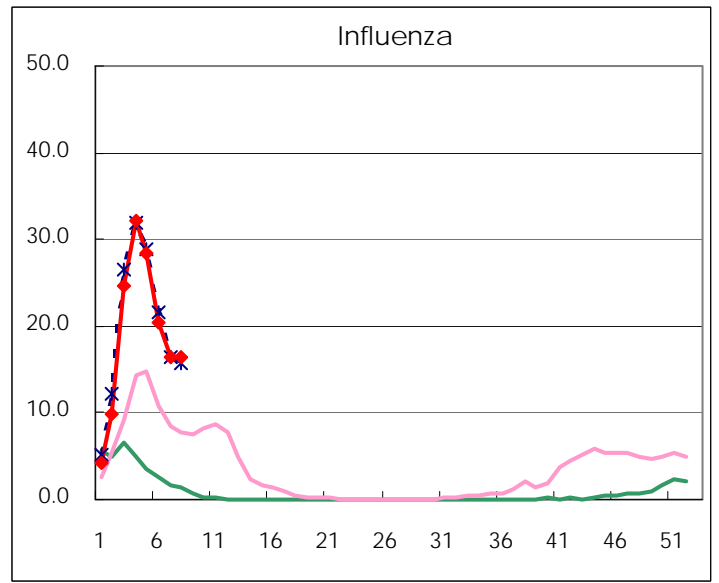
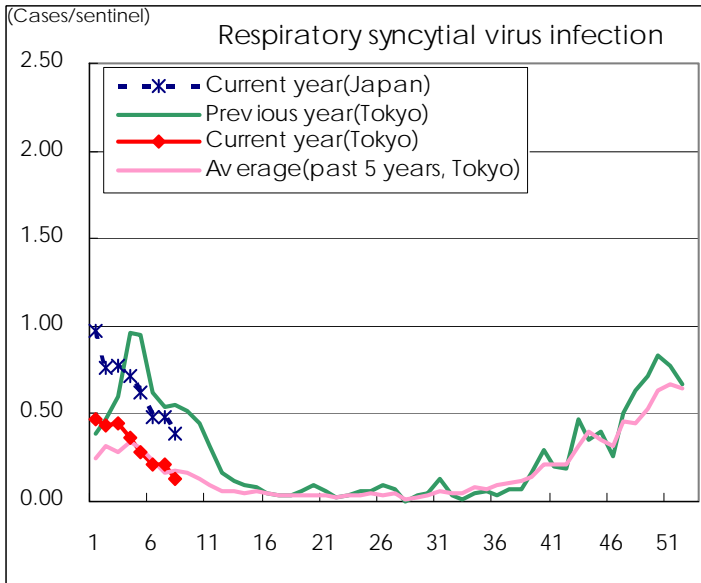
Category	Diseases	Tokyo				Japan		
		5th	6th	7th	8th	Cum 2011	8th	Cum 2011
V	Amebiasis	2	3	2	3	21	8	110
	Viral hepatitis(excluding hepatitis A and E)		1			5	2	38
	Acute encephalitis(excluding JE and WNE)		1	1		6	2	66
	Cryptosporidiosis			1		1		2
	Creutzfeldt-Jakob disease		1	1		3		11
	Severe invasive streptococcal infections(TSLS)	1			2	8	4	41
	Acquired immunodeficiency syndrome (AIDS)	3	11	6	20	78	20	205
	Giardiasis	2			1	3	1	12
	Meningococcal meningitis							
	Congenital rubella syndrome							
	Syphilis	1		7	5	28	7	92
	Tetanus						1	4
	Vancomycin-resistant S. aureus infection							
	Vancomycin-resistant Enterococcus infection						3	8
	Rubella				1	1	3	16
Measles	1	4	1	1	16	4	65	
Novel Flu	Novel influenza (pandemic A/H1N1 2009)	—	—	—	—	—	—	—

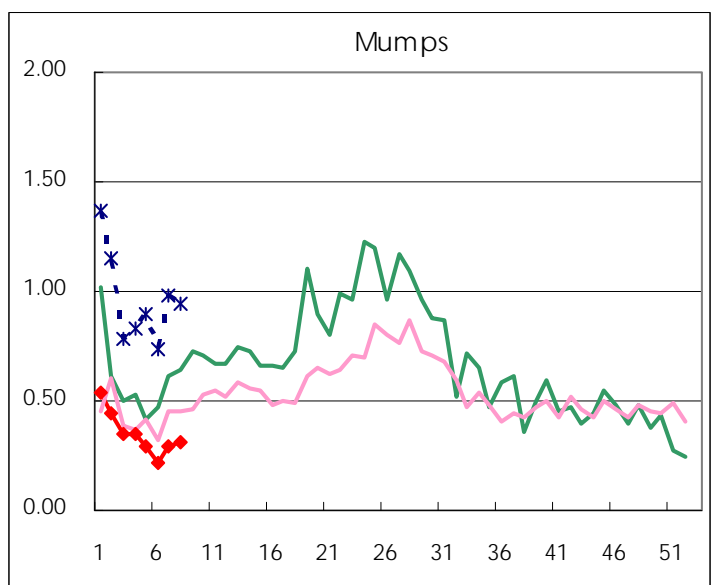
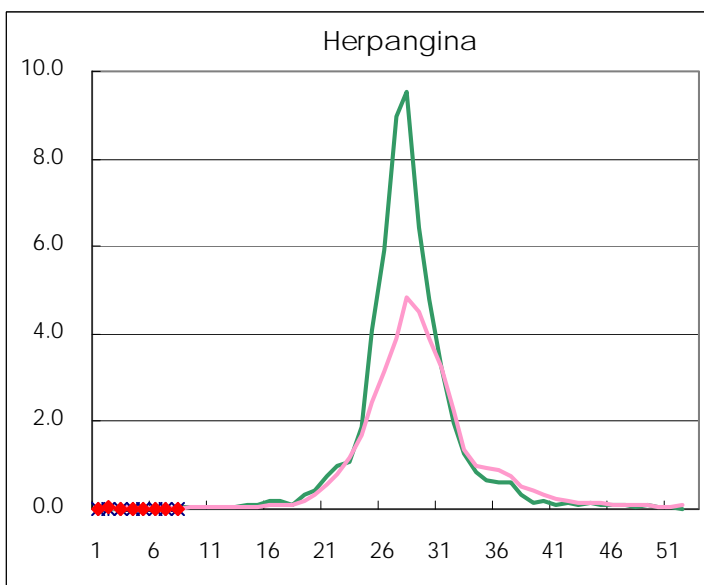
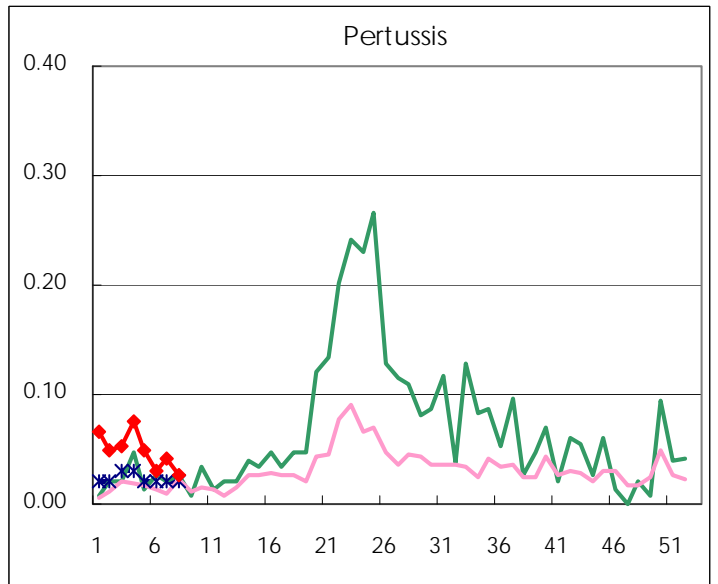
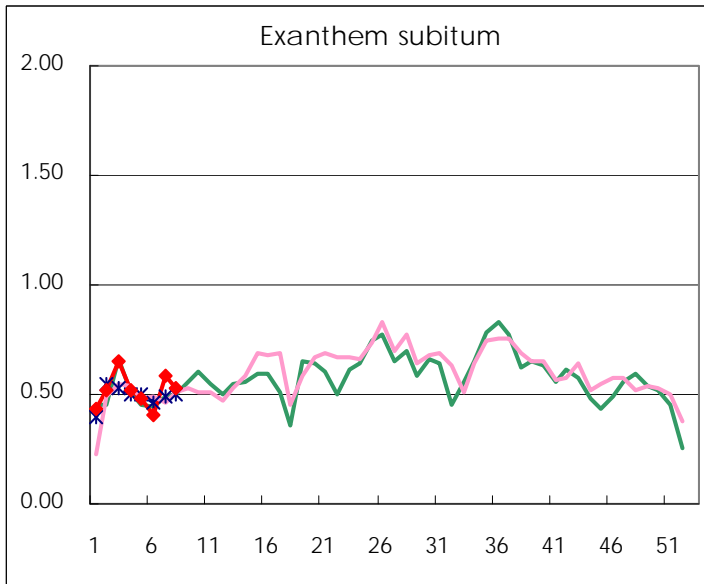
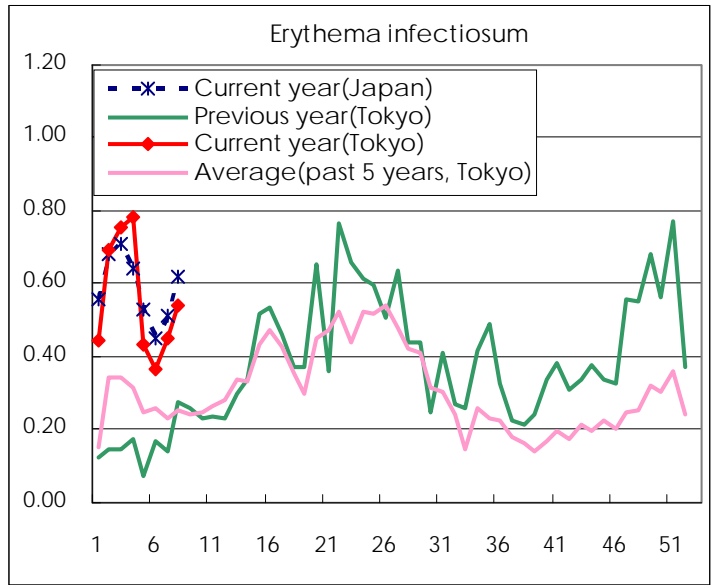
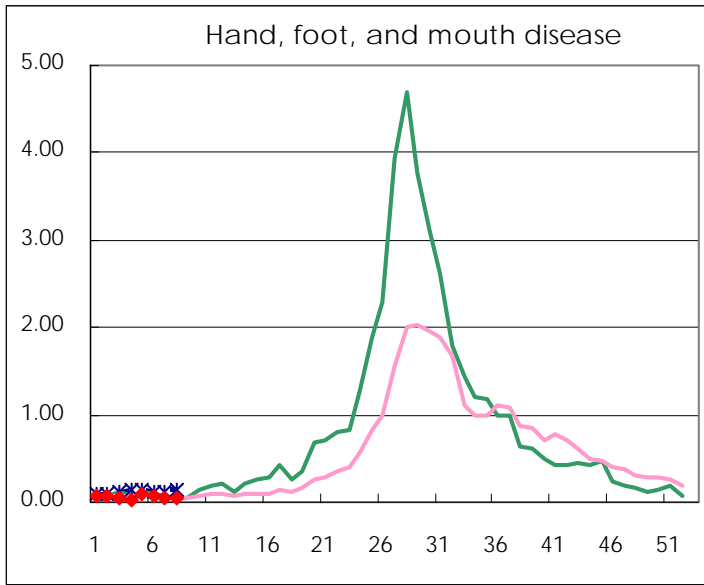
Number of patients with the diseases to be reported  
by the designated clinics and hospitals

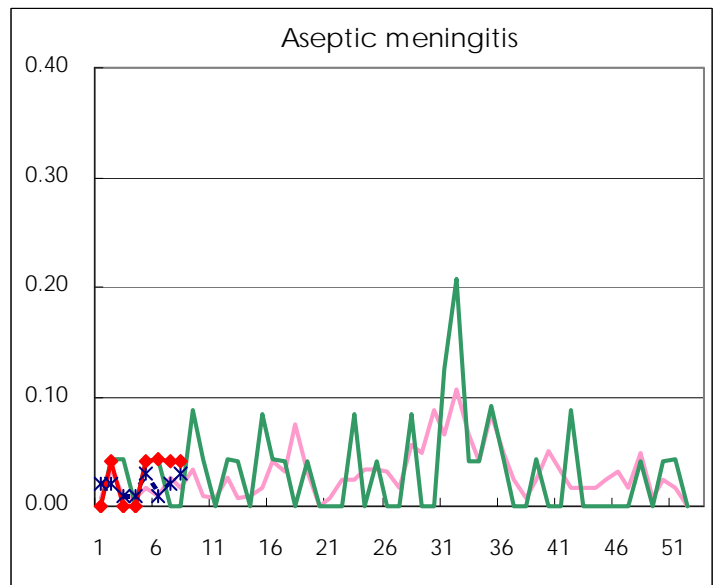
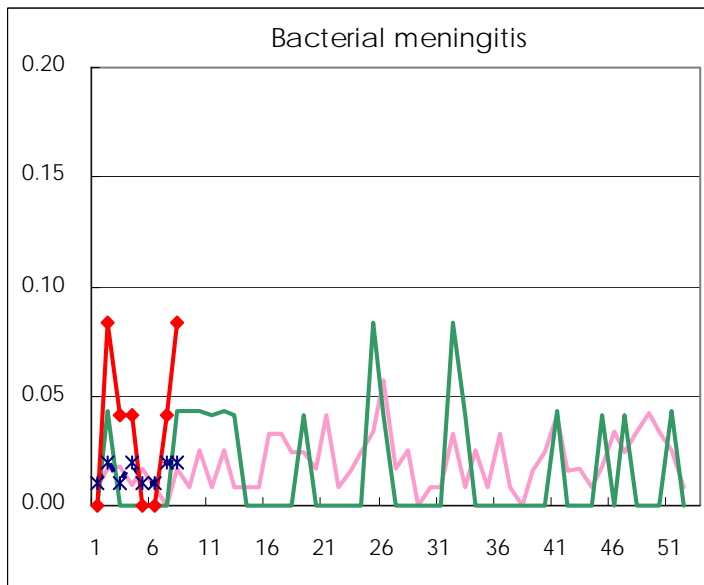
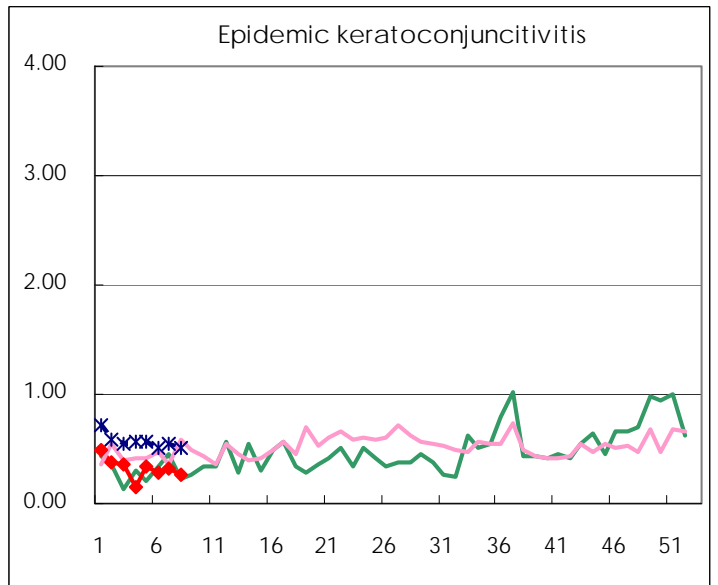
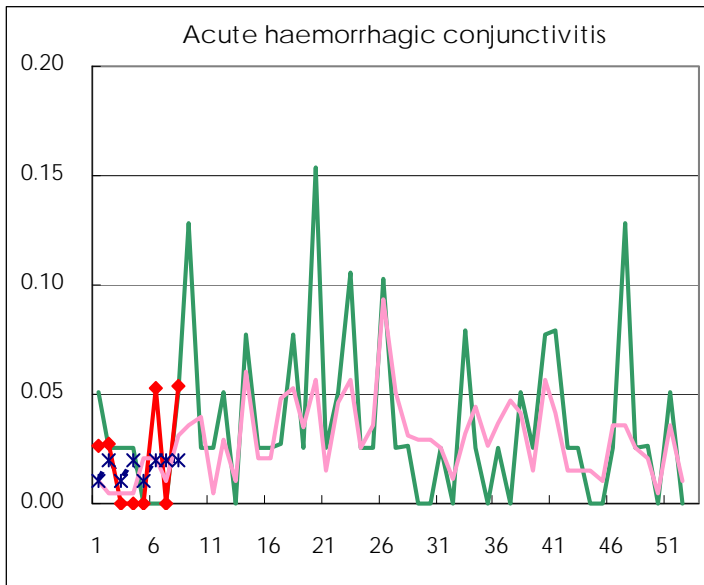
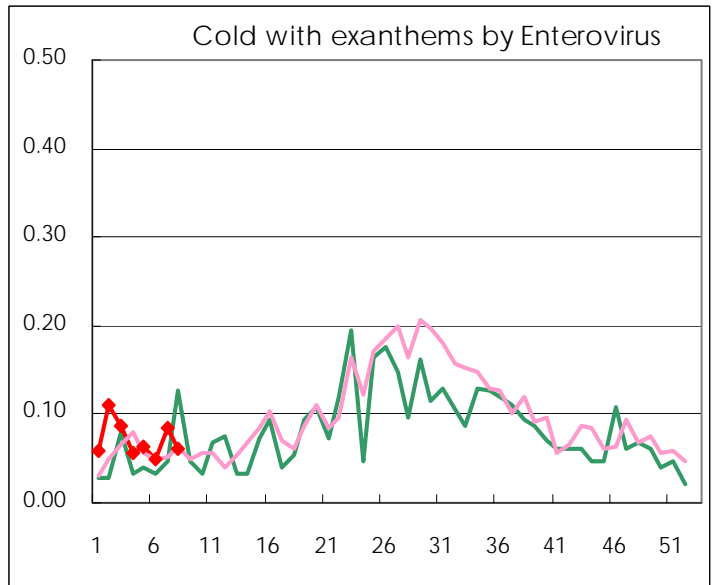
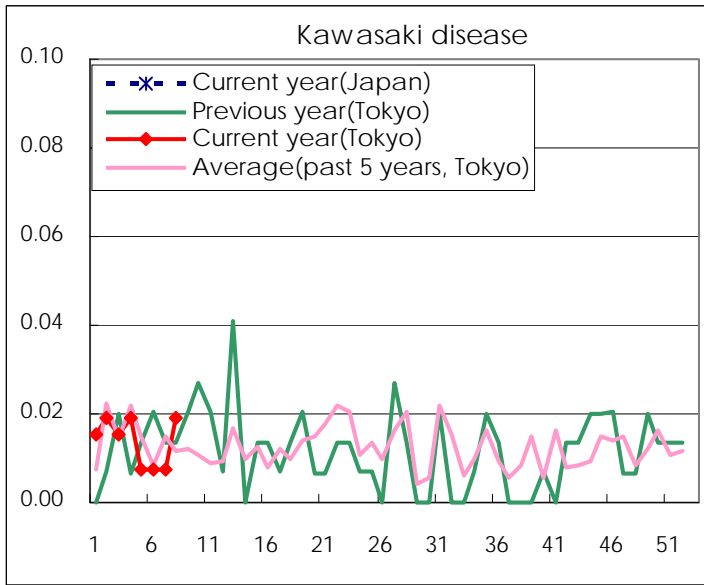
Diseases	2010 - 2011				
	5th	6th	7th	8th	/sentinel
Respiratory syncytial virus infection	75	55	57	35	0.13
Pharyngoconjunctival fever	73	93	85	93	0.35
Group A streptococcal pharyngitis	645	550	655	783	2.99
Infectious gastroenteritis	2767	2,751	2,783	2,954	11.27
Chickenpox	312	311	302	363	1.39
Hand, foot, and mouth disease	24	16	15	10	0.04
Erythema infectiosum	115	96	118	141	0.54
Exanthem subitum	126	107	154	138	0.53
Pertussis	13	8	11	7	0.03
Herpangina	2	2	1	4	0.02
Mumps	78	57	78	82	0.31
Cold with exanthems by Enterovirus	17	13	22	16	0.06
Kawasaki disease	2	2	2	5	0.02
Influenza	11,899	8,510	6,868	6,867	16.47
Acute hemorrhagic conjunctivitis		2		2	0.05
Epidemic keratoconjunctivitis	13	11	12	10	0.27
Bacterial meningitis			1	2	0.08
Aseptic meningitis	1	1	1	1	0.04
Mycoplasma pneumonia	14	14	14	18	0.75
Chlamydial pneumonia (excluding psittacosis)	1		1		

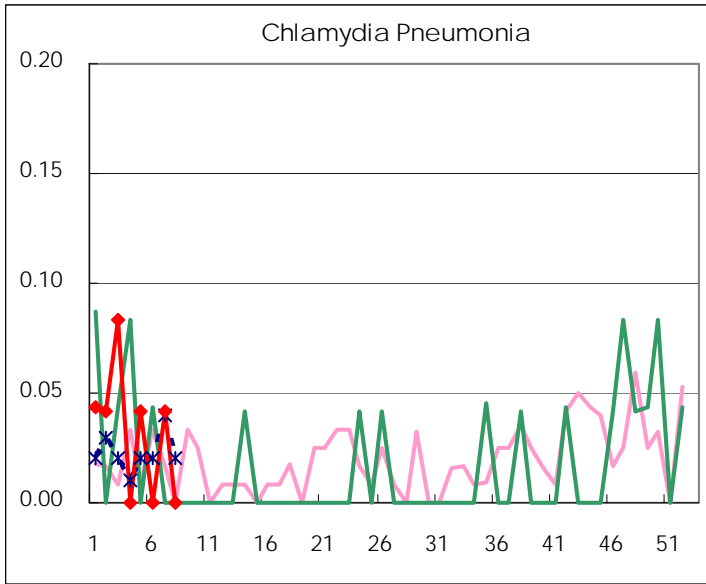
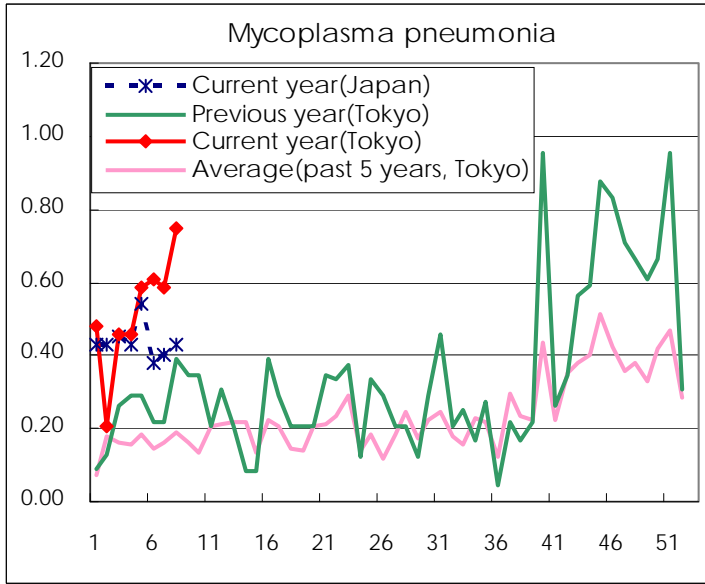
( Blank means 0. )

# Disease Trend Graph (weekly reported cases per sentinel in comparison)









Number of sentinel facilities for weekly reporting		
Types of sentinels	Number of sentinels	Sentinels having reported
Pediatric	264	260
Influenza	419	415
Ophthalmic	39	37
Specially-designated	25	24

**Tokyo Metropolitan Government**  
**Infectious Disease Surveillance Center**