
INFECTIOUS DISEASES WEEKLY REPORT

TOKYO IDWR

Tokyo Metropolitan Infectious Disease Surveillance Center

17 March 2011 / Number 10

Surveillance System in Tokyo, Japan

The infectious diseases which all physicians must report

All physicians must report to health centers the incidence of the diseases which are shown at page one. Health centers electronically report the individual cases to Tokyo Metropolitan Infectious Disease Surveillance Center.

The infectious diseases required to be reported by the sentinels

The numbers of patients who visit the sentinel clinics or hospitals during a week are reported to health centers in Tokyo. And they electronically report the numbers to Tokyo Metropolitan Infectious Disease Surveillance Center. We have about 400 sentinel clinics and hospitals in Tokyo.

1st Week is early January and 52nd Week is end of December.

Tokyo Metropolitan Institute of Public Health
Epidemiological Information Office

TEL:81-3-3363-3213 FAX:81-3-5332-7365

e-mail:idsc@tokyo-eiken.go.jp

URL:idsc.tokyo-eiken.go.jp/

Number of patients with the diseases which all physicians must report

Category	Diseases	Tokyo				Japan		
		7th	8th	9th	10th	Cum 2011	10th	Cum 2011
I	Ebola hemorrhagic fever							
	Crimean-Congo hemorrhagic fever							
	Smallpox							
	South American hemorrhagic fever							
	Plague							
	Marburg disease							
	Lassa fever							
II	Acute poliomyelitis							
	Tuberculosis	86	85	65	52	781	375	4,634
	Diphtheria							
	Severe Acute Respiratory Syndrome(SARS)							
	Avian influenza H5N1							
III	Cholera							
	Shigellosis			3	1	9	4	47
	Enterohemorrhagic Escherichia coli infection	1	1	3	2	13	6	148
	Typhoid fever							1
	Paratyphoid fever		1		1	5	2	7
IV	Hepatitis E		1			4	1	13
	West Nile fever							
	Hepatitis A	3			3	9	3	82
	Echinococcosis					1		5
	Yellow fever							
	Psittacosis							3
	Omsk hemorrhagic fever							
	Relapsing fever							
	Kyasanur forest disease							
	Q fever							
	Rabies							
	Coccidioidomycosis					2		2
	Monkeypox							
	Hemorrhagic fever with renal syndrome							
	Western equine encephalitis							
	Tick-borne encephalitis							
	Anthrax							
	Chikungunya fever							3
	Scrub typhus(Tsutsugamushi disease)	1	1			6		37
	Dengue fever	1		1		6	2	22
	Eastern equine encephalitis							
	Avian influenza (excluding H5N1)							
	Nipah virus infection							
	Japanese spotted fever							
	Japanese encephalitis		1			1		1
	Epidemic typhus							
	Hantavirus pulmonary syndrome							
	Herpes B virus infection							
	Glanders							
	Brucellosis							
Venezuelan equine encephalitis								
Hendra virus infection								
Botulism							2	
Malaria					1	1	7	
Tularemia								
Lyme disease								
Lyssavirus infection(excluding rabies)								
Rift valley fever								
Melioidosis								
Legionellosis	1	1	1		7	3	99	
Leptospirosis					1		1	
Rocky mountain spotted fever								

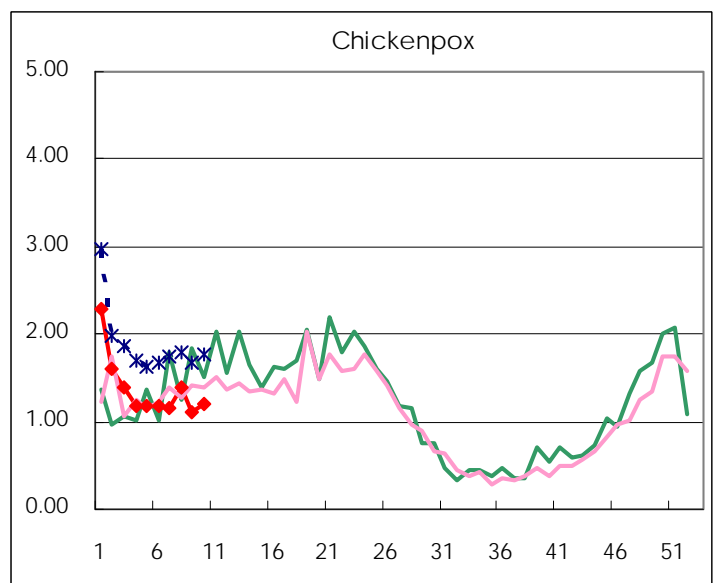
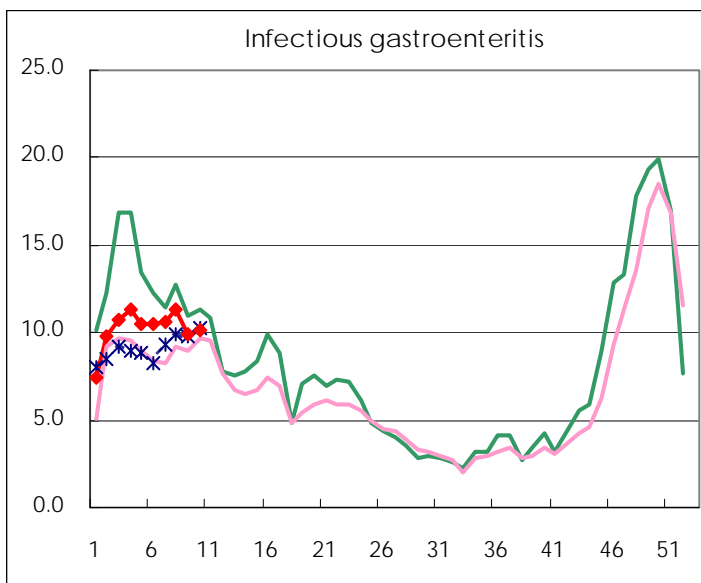
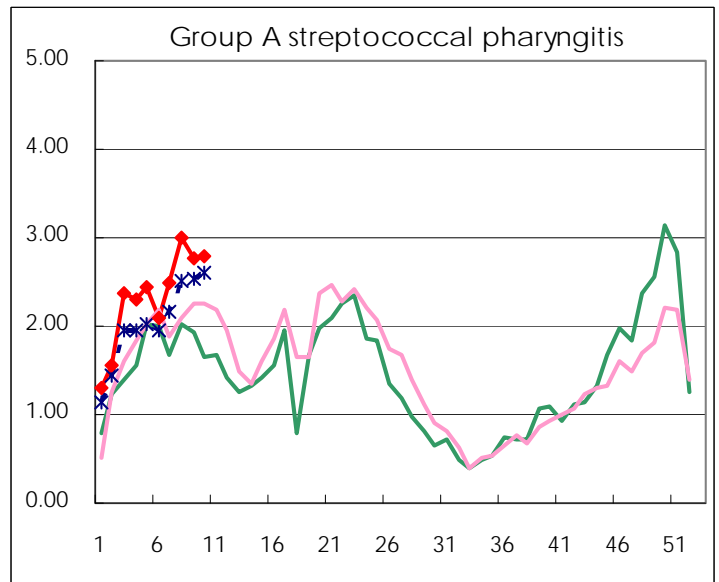
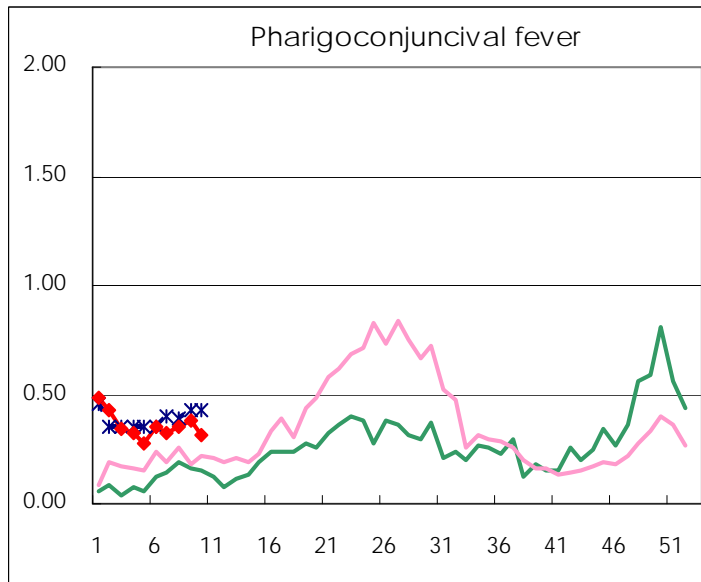
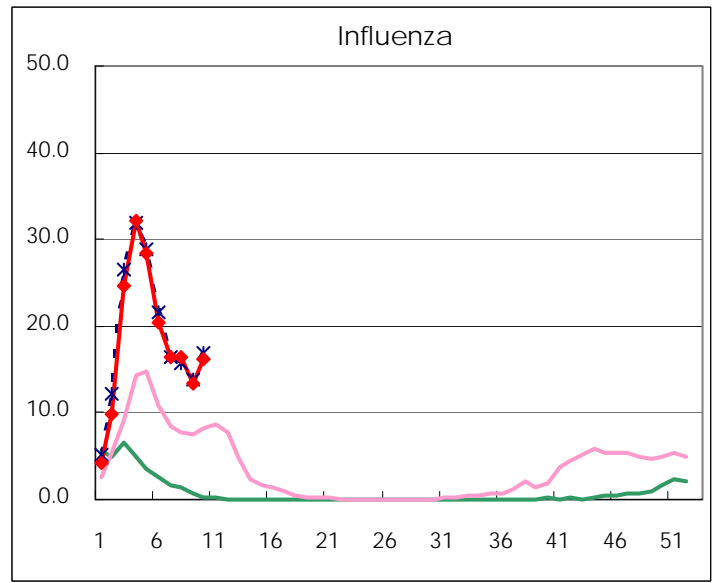
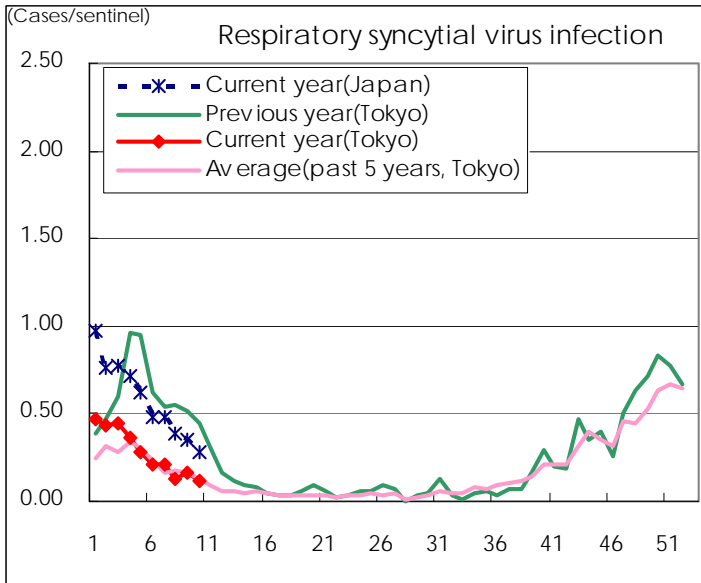
Category	Diseases	Tokyo				Japan		
		7th	8th	9th	10th	Cum 2011	10th	Cum 2011
V	Amebiasis	2	3	8	2	31	10	137
	Viral hepatitis(excluding hepatitis A and E)			1		6	2	45
	Acute encephalitis(excluding JE and WNE)	1				6	1	78
	Cryptosporidiosis	1				1		2
	Creutzfeldt-Jakob disease	1		2		5	2	18
	Severe invasive streptococcal infections(TSLS)		2		2	10	1	49
	Acquired immunodeficiency syndrome (AIDS)	6	20	8	10	96	17	255
	Giardiasis		1			3		14
	Meningococcal meningitis							1
	Congenital rubella syndrome							
	Syphilis	7	6	4	5	38	8	119
	Tetanus				1	1	1	7
	Vancomycin-resistant S. aureus infection							
	Vancomycin-resistant Enterococcus infection						1	10
	Rubella		1			1	3	20
Measles	1	1	1	2	18	4	69	
Novel Flu	Novel influenza (pandemic A/H1N1 2009)	—	—	—	—	—	—	—

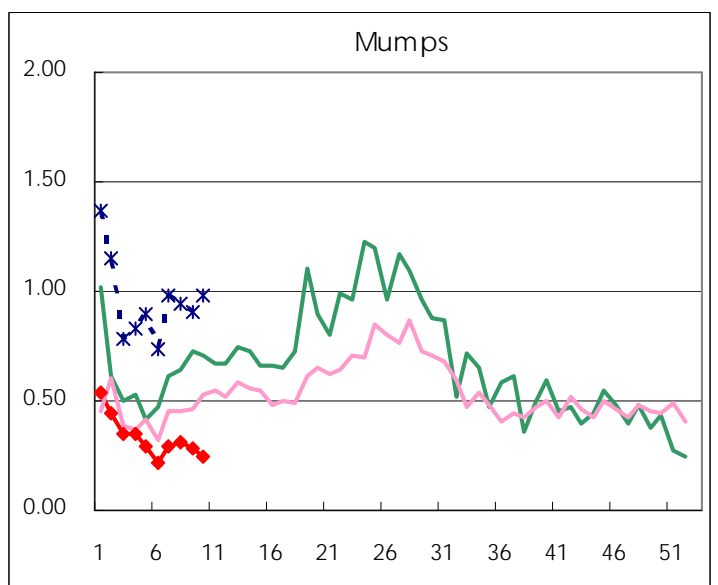
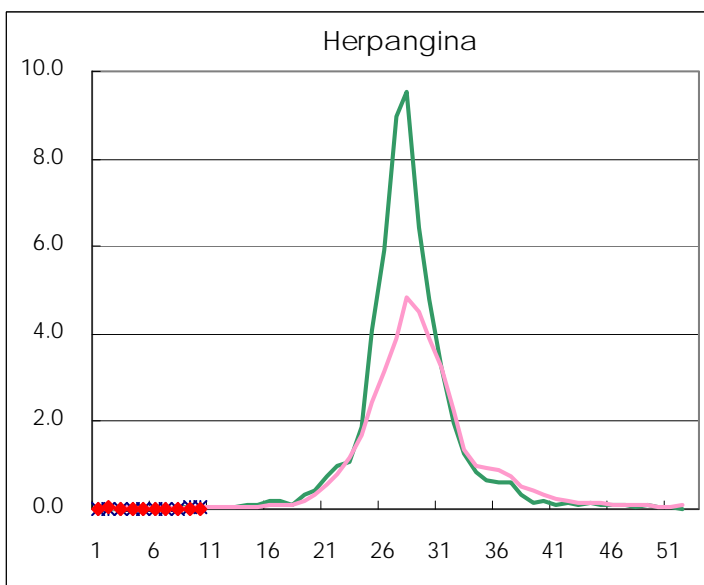
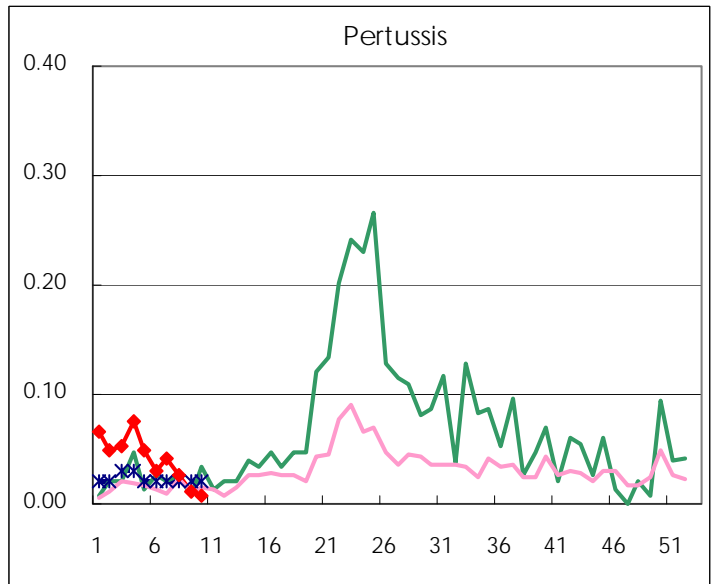
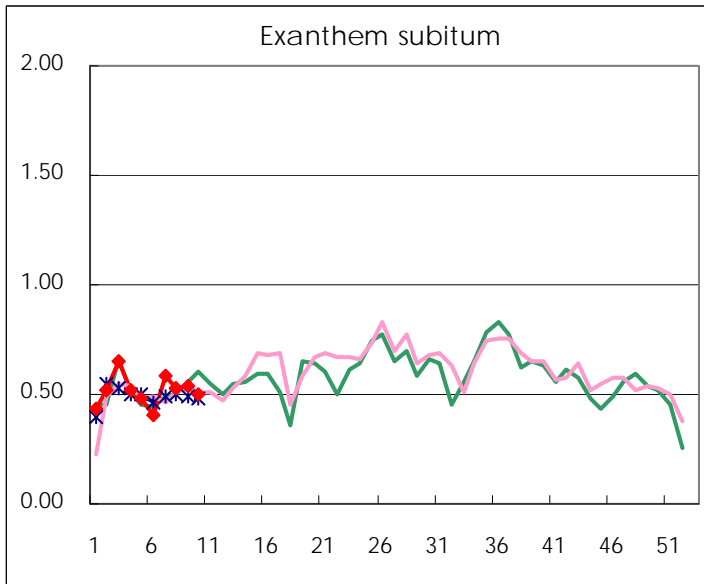
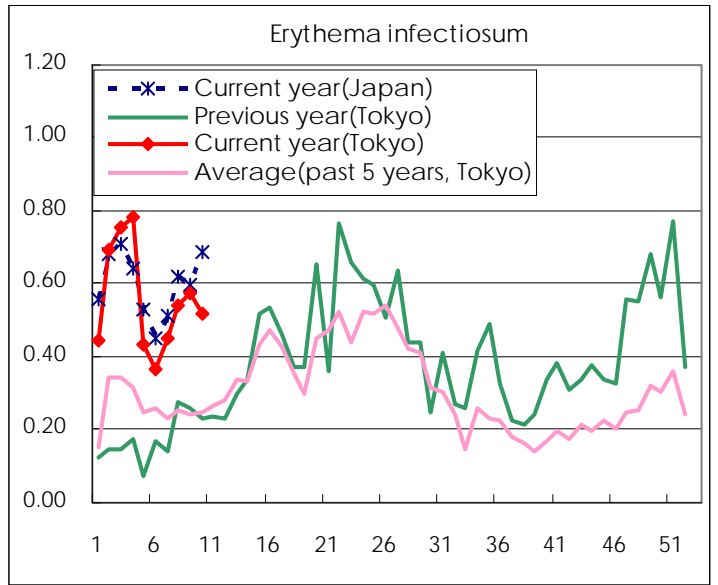
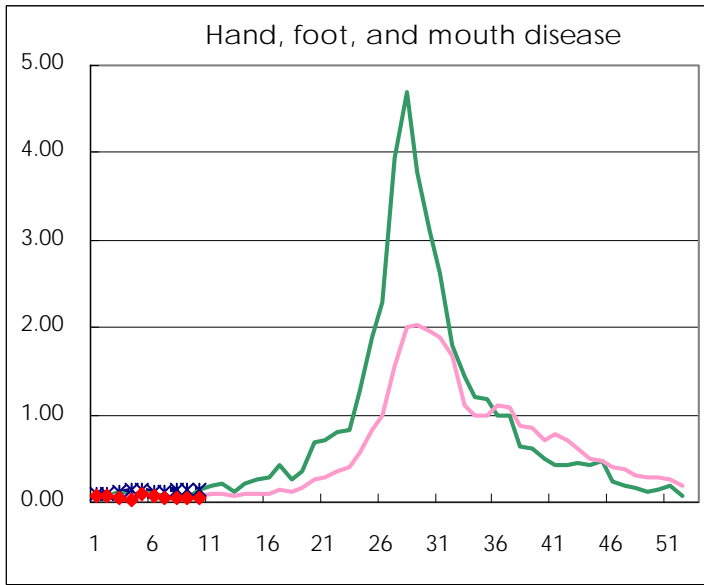
Number of patients with the diseases to be reported
by the designated clinics and hospitals

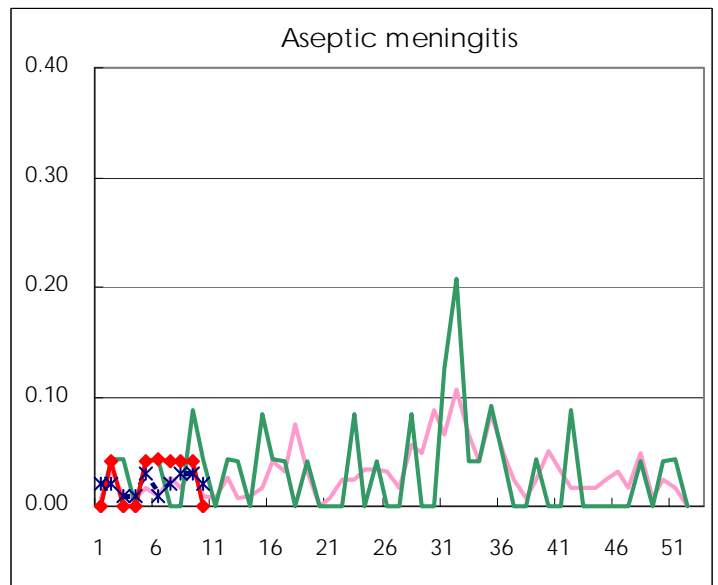
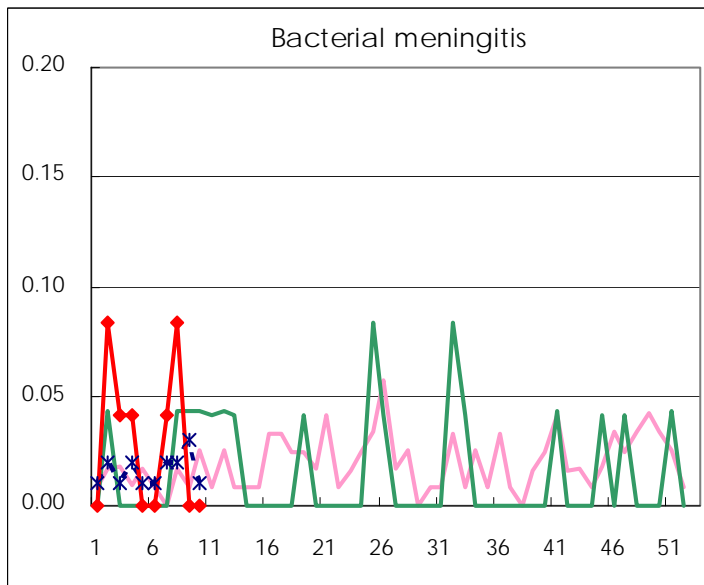
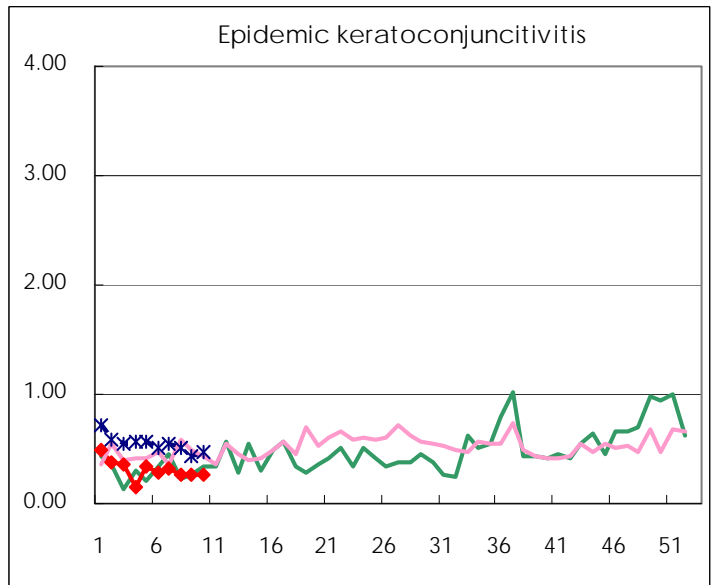
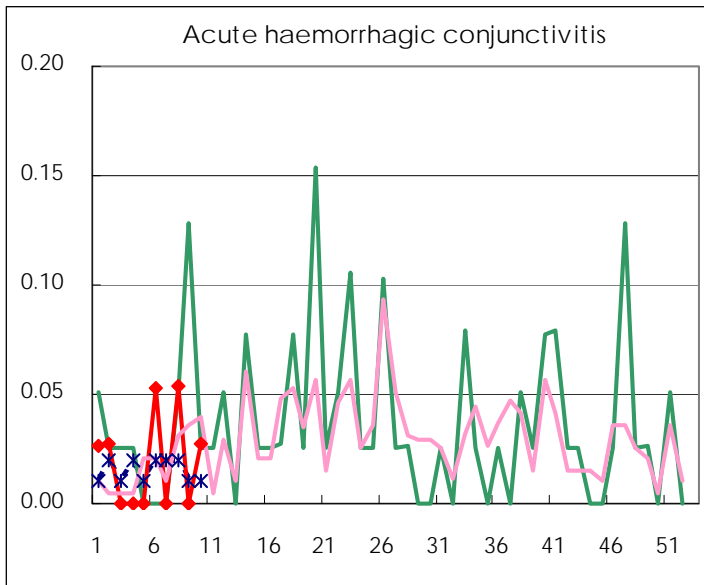
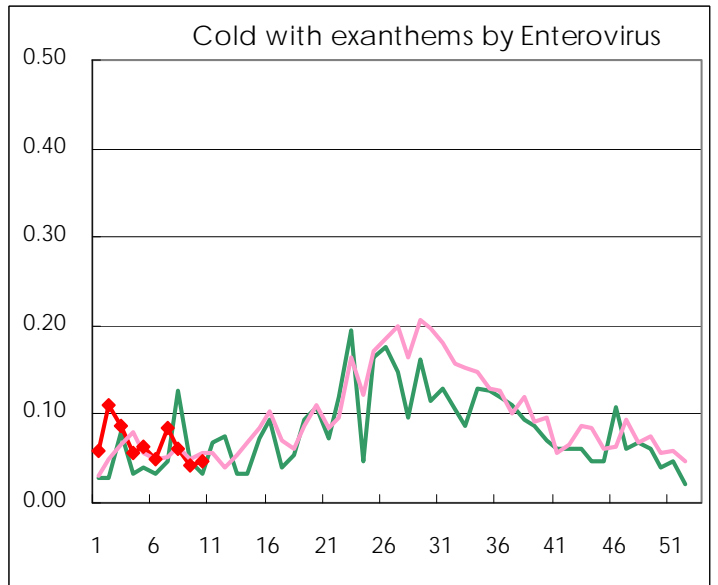
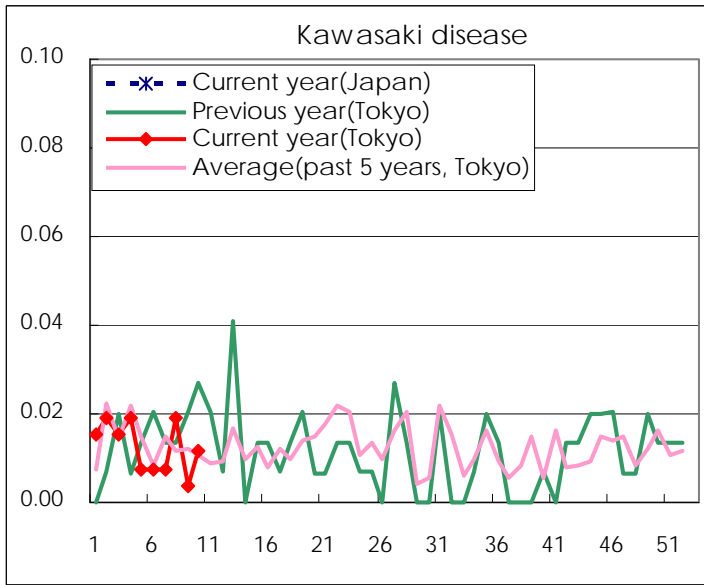
Diseases	2010 - 2011				
	7th	8th	9th	10th	/sentinel
Respiratory syncytial virus infection	57	35	42	29	0.11
Pharyngoconjunctival fever	85	93	100	81	0.31
Group A streptococcal pharyngitis	655	783	727	724	2.78
Infectious gastroenteritis	2783	2,954	2,586	2,626	10.10
Chickenpox	302	363	291	312	1.20
Hand, foot, and mouth disease	15	10	15	13	0.05
Erythema infectiosum	118	141	150	135	0.52
Exanthem subitum	154	138	140	129	0.50
Pertussis	11	7	3	2	0.01
Herpangina	1	4	3	5	0.02
Mumps	78	82	74	63	0.24
Cold with exanthems by Enterovirus	22	16	11	12	0.05
Kawasaki disease	2	5	1	3	0.01
Influenza	6,872	6,867	5,602	6,730	16.26
Acute hemorrhagic conjunctivitis		2		1	0.03
Epidemic keratoconjunctivitis	12	10	10	10	0.27
Bacterial meningitis	1	2			
Aseptic meningitis	1	1	1		
Mycoplasma pneumonia	14	18	10	15	0.63
Chlamydial pneumonia (excluding psittacosis)	1		2	1	0.04

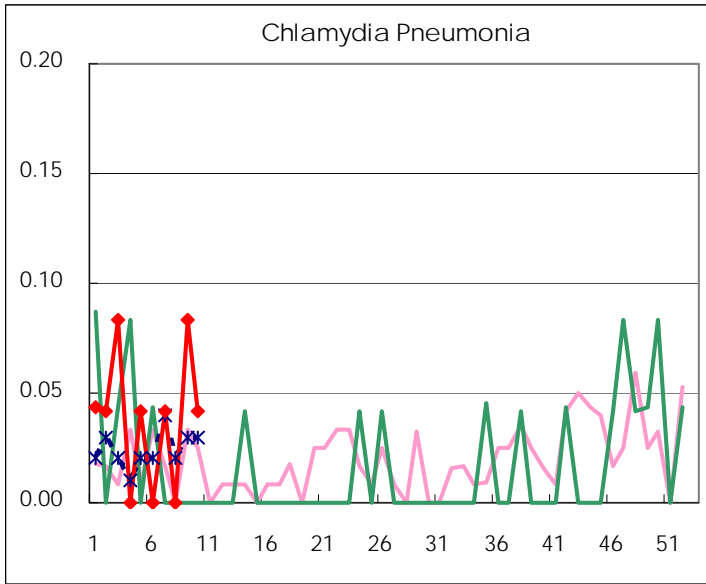
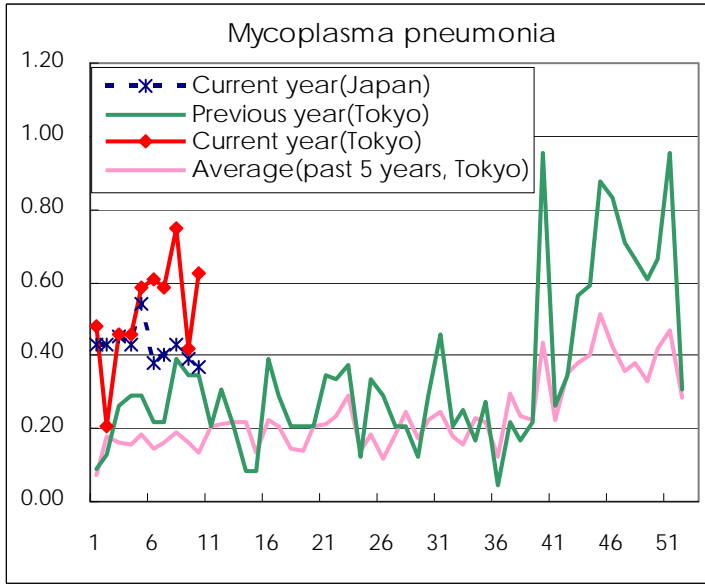
(Blank means 0.)

Disease Trend Graph (weekly reported cases per sentinel in comparison)









Number of sentinel facilities for weekly reporting		
Types of sentinels	Number of sentinels	Sentinels having reported
Pediatric	264	260
Influenza	419	414
Ophthalmic	39	37
Specially-designated	25	24

Tokyo Metropolitan Government
Infectious Disease Surveillance Center